



1-1/2" SLIP JOINT CONNECTION - 45 DEGREES TECHNICAL SPECIFICATION

Job Name _____	Item # _____
Location _____	
Engineer _____	Contractor _____
PO # _____	Tag _____
Representative _____	

SPECIFICATIONS

Dearborn Brass 1-1/2" Brass Tubular Slip Joint Connections are designed for use in tubular drain applications.

DESCRIPTION

- Chrome Finish
- 20 Gauge Brass
- 1-1/2" Slip Joint Connector
 - (1) Connector
 - (2) Zinc Nuts
 - (2) Rubber Washers

APPROVALS AND LISTINGS



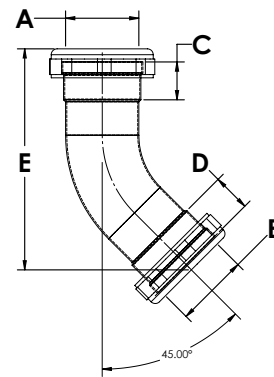
PRODUCT SELECTOR

1-1/2" SLIP JOINT CONNECTOR - 45 DEGREES				
✓	Product Number	Size	Description	Carton Quantity
	8478	1-1/2"	45 Degree Slip Joint Elbow, Chrome - 20 Ga.	5

Data is subject to manufacturing tolerances.

DIMENSIONS

[A]:	Diameter A	1.5"	[D]:	Dimension D	0.71"
[B]:	Diameter B	1.25"	[E]:	Dimension E	3.5"
[C]:	Dimension C	0.71"			



Access BIM/Revit content through www.oatey.com