



Job Name _____ Item # _____
 Location _____
 Engineer _____ Contractor _____
 PO # _____ Tag _____
 Representative _____

1-1/4 IN. X 12 IN. CHROME-PLATED BRASS DOUBLE THREADED-JOINT SINK DRAIN TAILPIECE EXTENSION TUBE TECHNICAL SPECIFICATION

SPECIFICATIONS

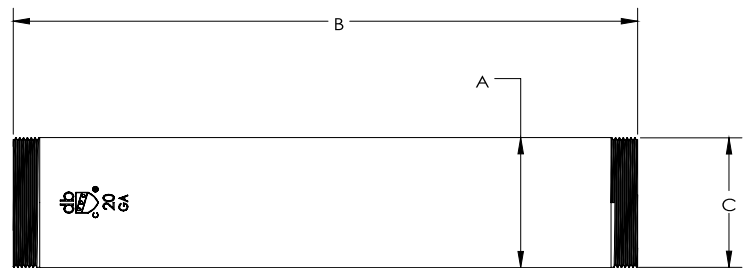
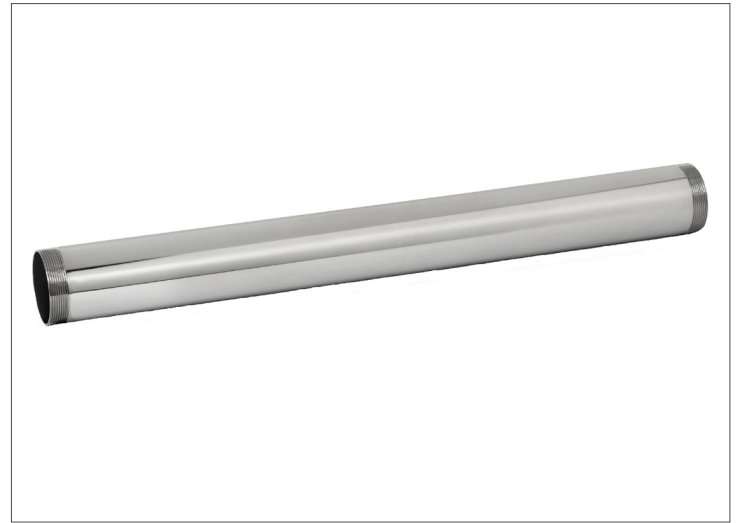
Use the 1-1/4 in. x 12 in. Brass Extension Tube for extending the waste connection from your lavatory sink to the drain. It's threaded on both ends for quick installation. The brass construction provides durability, while the chrome plating offers a sleek look. Dearborn is known for providing superior quality plumbing products designed with the plumber in mind.

APPROVALS AND LISTINGS



DIMENSIONS

[A]:	1.25"
[B]:	12.0"
[C]:	1.26-27UNS-2A



PRODUCT SELECTOR

✓	Product Number	Description	Ctn. Wt.	Ctn. Qty.
	HDC822-1	1-1/4 in. x 12 in. Chrome-Plated 20-Gauge Brass Double Threaded-Joint Sink Drain Tailpiece Extension Tube	3.1 lbs.	8

Access BIM/Revit content through www.oatey.com