



# 1-1/4" EXTENSION TUBES WITH THREADED JOINT TECHNICAL SPECIFICATION

Job Name \_\_\_\_\_ Item # \_\_\_\_\_  
 Location \_\_\_\_\_  
 Engineer \_\_\_\_\_ Contractor \_\_\_\_\_  
 PO # \_\_\_\_\_ Tag \_\_\_\_\_  
 Representative \_\_\_\_\_

## SPECIFICATIONS

Dearborn Tubular Extension Tubes with Threaded Joint are manufactured with 17 or 20 gauge brass in various sizes for use in tubular drain applications.

## DESCRIPTION

- Chrome Finish

## APPROVALS AND LISTINGS



## PRODUCT SELECTOR

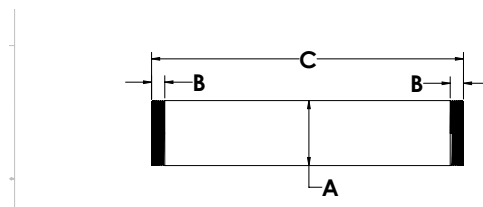
1-1/4" EXTENSION TUBES WITH THREADED JOINT				
✓	Product Number	Size	Description	Carton Quantity
	819-1	1-1/4" x 6"	Extension Tube, Threaded Both Ends - 20 Ga.	10
	820A-1	1-1/4" x 8"	Extension Tube, Threaded Both Ends - 20 Ga.	10
	822-1	1-1/4" x 12"	Extension Tube, Threaded Both Ends - 20 Ga.	10
	822-3	1-1/4" x 12"	Extension Tube, Threaded Both Ends - 20 Ga., Unfinished 1	10
	820C-1	1-1/4" x 8"	Extension Tube, Threaded Both Ends - 17 Ga.	10
	822A-1	1-1/4" x 12"	Extension Tube, Threaded Both Ends - 17 Ga.	10

Data is subject to manufacturing tolerances.

## DIMENSIONS

[A]:	Diameter A	1.25"	[C]:	Length C	See Chart A.1
[B]:	Threaded Length	0.26"			

A.1 - LENGTHS			
	Size 6"	Size 8"	Size 12"
Length C:	6"	8"	12"



Access BIM/Revit content through [www.oatey.com](http://www.oatey.com)