



## Submittal Data Sheet

1.25-Ton Wall Mounted Unit

FTX15NMVJURXL15QMVJU

### FEATURES

- Titanium apatite photocatalytic air purification filter (option)
- Hot start technology
- Auto-restart (after power failure)

### BENEFITS

- Quiet operation
- Low ambient cooling operation down to -4° F with field setting and wind baffle (KPW063A4)
- Operating Range - Cooling (50° - 114.8°)
- Operating Range - Heating (-13° - 60°)
- 12 Year limited parts warranty with online registration
- 5 Year limited parts warranty for commercial applications

### INDOOR UNIT

### OUTDOOR UNIT





## Submittal Data Sheet

1.25-Ton Wall Mounted Unit

FTX15NMVJURXL15QMVJU

### SYSTEM PERFORMANCE

Indoor Unit Model No.	FTX15NMVJU	Indoor Unit Name:	18 SEER HP DUCTLESS ID 1.25TON
Outdoor Unit Model No.	RXL15QMVJU	Outdoor Unit Name:	18 SEER HP DUCTLESS OD 1.25TON
Rated Cooling Capacity (Btu/hr):	15,000	Rated Cooling Conditions:	Indoor (°F DB/WB): 80 / 67 Ambient (°F DB/WB): 95 / 75
Sensible Capacity (Btu/hr):	12,470	Rated Piping Length(ft):	25
Max/Min Cooling Capacity (Btu/hr):	18,400 / 5,800	Rated Height Difference (ft):	65.60
Cooling Input Power (kW):	4.400	Rated Heating Conditions:	Indoor (°F DB/WB): 70 / 60 Ambient (°F DB/WB): 47 / 43
SEER (Non-Ducted/Ducted):	20.00 /	HSPF (Non-Ducted/Ducted):	12.5 /
EER (Non-Ducted/Ducted):	13.00 /	Heating COP (Non-Ducted/Ducted):	4.0 /
Rated Heating Capacity (Btu/hr):	18,300		
Max/Min Heating Capacity (Btu/hr):	24,600 / 5,800		
Heating Input Power (kW):	5.35		

### SYSTEM DETAILS

Refrigerant Type:	R-410A	Cooling Operation Range (°F DB):	50 - 115
Holding Refrigerant Charge (lbs):	3.2	Heating Operation Range (°F WB):	-13 - 75
Additional Charge (lb/ft):	0.21	Max. Pipe Length (Vertical) (ft):	66
Pre-charge Piping (Length) (ft):		Cooling Range w/Baffle (°F DB):	0 - 115
Max. Pipe Length (Total) (ft):	98	Heating Range w/Baffle (°F WB):	-
Max Height Separation (Ind to Ind ft):	66		

# Submittal Data Sheet

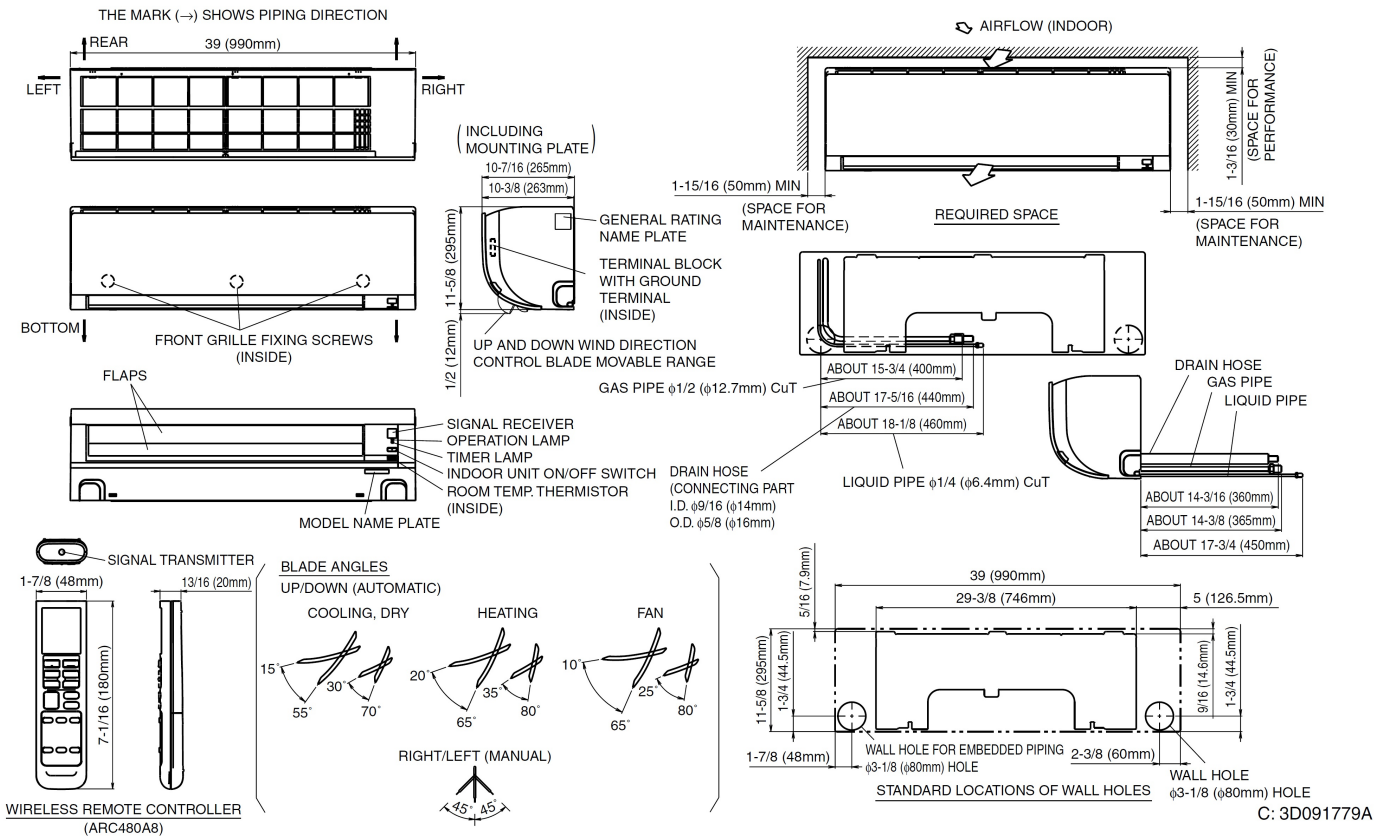
1.25-Ton Wall Mounted Unit  
FTX15NMVJURXL15QMVJU

**INDOOR UNIT DETAILS**

Power Supply (V/Hz/Ph):	208-230 / 60 / 1	Airflow Rate (H/M/L/SL) (CFM):	593/505/431/367
Power Supply Connections:		Moisture Removal (Gal/hr):	
Min. Circuit Amps MCA (A):		Gas Pipe Connection (inch):	1/2
Max Overcurrent Protection (MOP) (A):		Liquid Pipe Connection (inch):	1/4
Dimensions (HxWxD) (in):	11-5/8 x 39 x 10-3/8	Condensate Connection (inch):	5/8
Panel (HxWxD) (in):		Sound Pressure (H/M/L) (dBA):	41/36/33
Net Weight (lb):	27	Sound Power Level (dBA):	
Panel Weight (lb):		Ext. Static Pressure (Rated/Max) (inWg):	/

## DIMENSIONAL DRAWING - INDOOR UNIT

### FTX15NMVJU





# Submittal Data Sheet

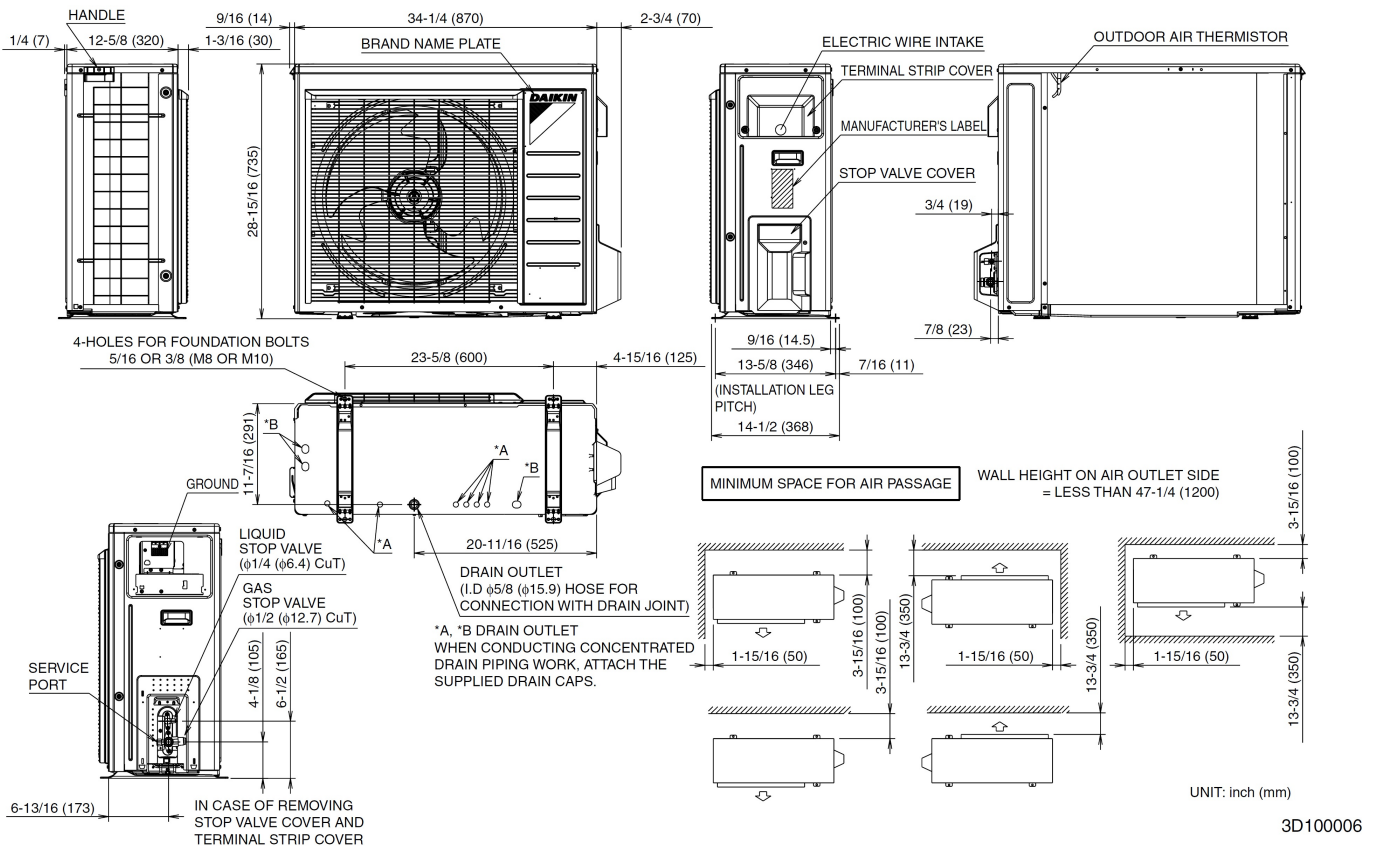
1.25-Ton Wall Mounted Unit  
FTX15NMVJURXL15QMJVJU

## OUTDOOR UNIT DETAILS

Power Supply (V/Hz/Ph):	208-230 / 60 / 1	Compressor Type:	Inverter
Power Supply Connections:	L1, L2, Ground	Capacity Control Range (%):	-
Min. Circuit Amps MCA (A):	13.00	Airflow Rate (H/SL) (CFM):	2,044/1,762
Max Overcurrent Protection (MOP) (A):	15.00	Gas Pipe Connection (inch):	1/2
Max Starting Current MSC(A):		Liquid Pipe Connection (inch):	1/4
Rated Load Amps RLA(A):	11.8	Sound Pressure (H) (dBA):	50
Dimensions (HxWxD) (in):	28-15/16 x 34-1/4 x 12-5/8	Sound Power Level (dBA):	
Net Weight (lb):	108		

## DIMENSIONAL DRAWING - OUTDOOR UNIT

### RXL15QMJVJU



Daikin North America LLC, 5151 San Felipe, Suite 500, Houston, TX, 77056

Daikin City Generated Submittal Data

[www.daikinac.com](http://www.daikinac.com) [www.daikincomfort.com](http://www.daikincomfort.com)

(Daikin's products are subject to continuous improvements. Daikin reserves the right to modify product design, specifications and information in this data sheet without notice and without incurring any obligations)

Submittal Date: 1/13/2017 6:41:31 AM

Page 4 of 4