



Submittal Data Sheet

1.0-Ton Wall Mounted Unit

FTX12NMVJURXL12QMVJU

FEATURES

- Titanium apatite photocatalytic air purification filter (option)
- Hot start technology
- Auto-restart (after power failure)

BENEFITS

- Quiet operation
- Low ambient cooling operation down to -4° F with field setting and wind baffle (KPW937A4)
- Operating Range - Cooling (50° - 114.8°)
- Operating Range - Heating (-13° - 60°)
- 12 Year limited parts warranty with online registration
- 5 Year limited parts warranty for commercial applications

INDOOR UNIT

OUTDOOR UNIT





Submittal Data Sheet

1.0-Ton Wall Mounted Unit
FTX12NMVJURXL12QMVJU

SYSTEM PERFORMANCE

Indoor Unit Model No.	FTX12NMVJU	Indoor Unit Name:	19 SEER HP DUCTLESS ID 1 TON
Outdoor Unit Model No.	RXL12QMVJU	Outdoor Unit Name:	18 SEER HP DUCTLESS OD 1 TON
Rated Cooling Capacity (Btu/hr):	10,900	Rated Cooling Conditions:	Indoor (°F DB/WB): 80 / 67 Ambient (°F DB/WB): 95 / 75
Sensible Capacity (Btu/hr):	9,100	Rated Piping Length(ft):	25
Max/Min Cooling Capacity (Btu/hr):	13,300 / 4,400	Rated Height Difference (ft):	49.00
Cooling Input Power (kW):	3.200	Rated Heating Conditions:	Indoor (°F DB/WB): 70 / 60 Ambient (°F DB/WB): 47 / 43
SEER (Non-Ducted/Ducted):	20.00 /	HSPF (Non-Ducted/Ducted):	12.0 /
EER (Non-Ducted/Ducted):	12.50 /	Heating COP (Non-Ducted/Ducted):	3.9 /
Rated Heating Capacity (Btu/hr):	13,600		
Max/Min Heating Capacity (Btu/hr):	18,800 / 4,400		
Heating Input Power (kW):	4.00		

SYSTEM DETAILS

Refrigerant Type:	R-410A	Cooling Operation Range (°F DB):	50 - 115
Holding Refrigerant Charge (lbs):	2.1	Heating Operation Range (°F WB):	-13 - 75
Additional Charge (lb/ft):	0.21	Max. Pipe Length (Vertical) (ft):	49
Pre-charge Piping (Length) (ft):		Cooling Range w/Baffle (°F DB):	0 - 115
Max. Pipe Length (Total) (ft):	66	Heating Range w/Baffle (°F WB):	- 75
Max Height Separation (Ind to Ind ft):	49		

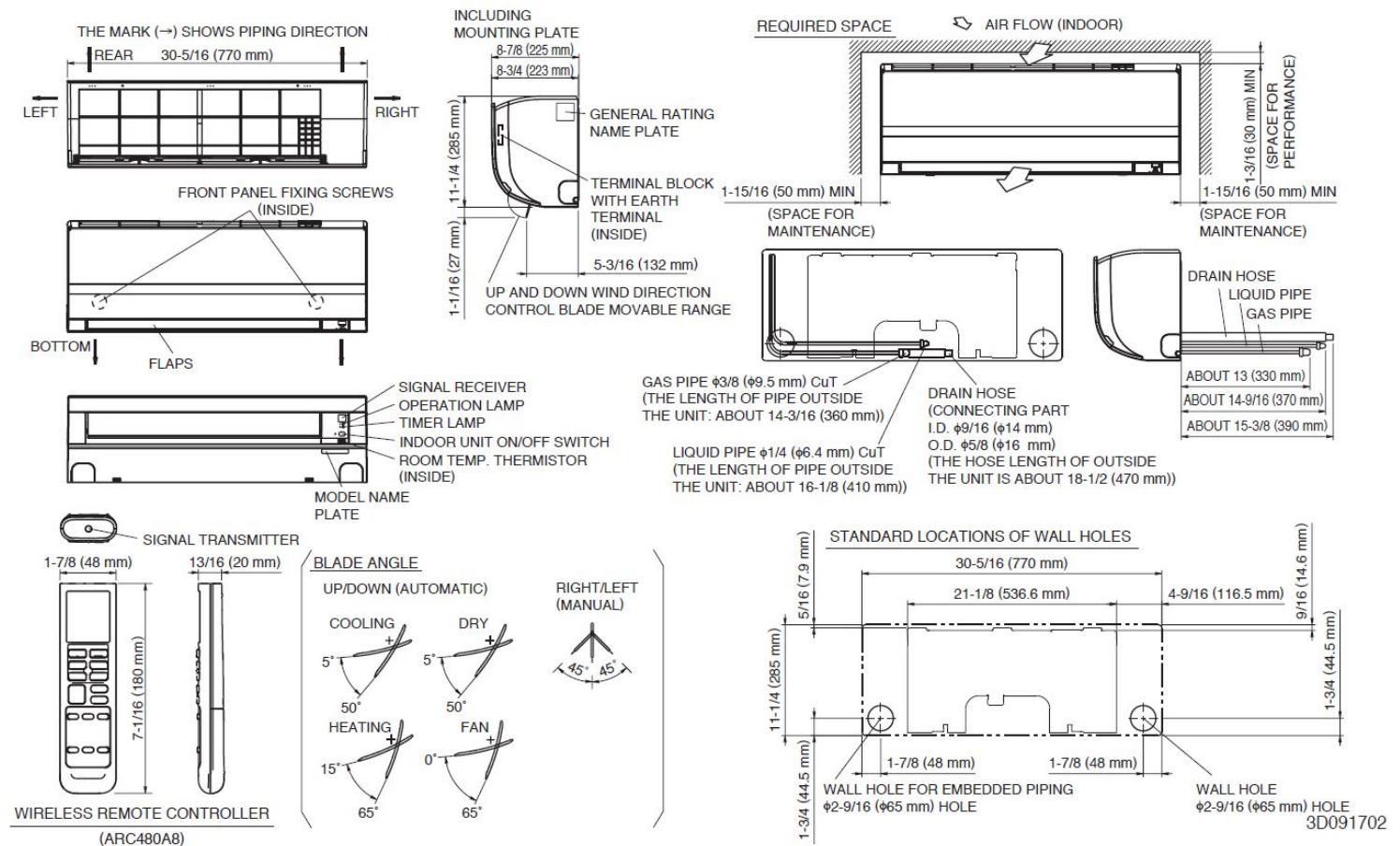
Submittal Data Sheet

1.0-Ton Wall Mounted Unit
FTX12NMVJURXL12QMVJU

INDOOR UNIT DETAILS

Power Supply (V/Hz/Ph):	208-230 / 60 / 1	Airflow Rate (H/M/L/SL) (CFM):	434/311/247/145
Power Supply Connections:	See Outdoor Unit for Electrical Specs	Moisture Removal (Gal/hr):	
Min. Circuit Amps MCA (A):		Gas Pipe Connection (inch):	3/8
Max Overcurrent Protection (MOP) (A):		Liquid Pipe Connection (inch):	1/4
Dimensions (HxWxD) (in):	11-1/4 x 30-5/16 x 8-3/4	Condensate Connection (inch):	5/8
Panel (HxWxD) (in):		Sound Pressure (H/M/L/SL) (dBA):	45/37/30/19
Net Weight (lb):	18	Sound Power Level (dBA):	
Panel Weight (lb):		Ext. Static Pressure (Rated/Max) (inWg):	/

DIMENSIONAL DRAWING - INDOOR UNIT





Submittal Data Sheet

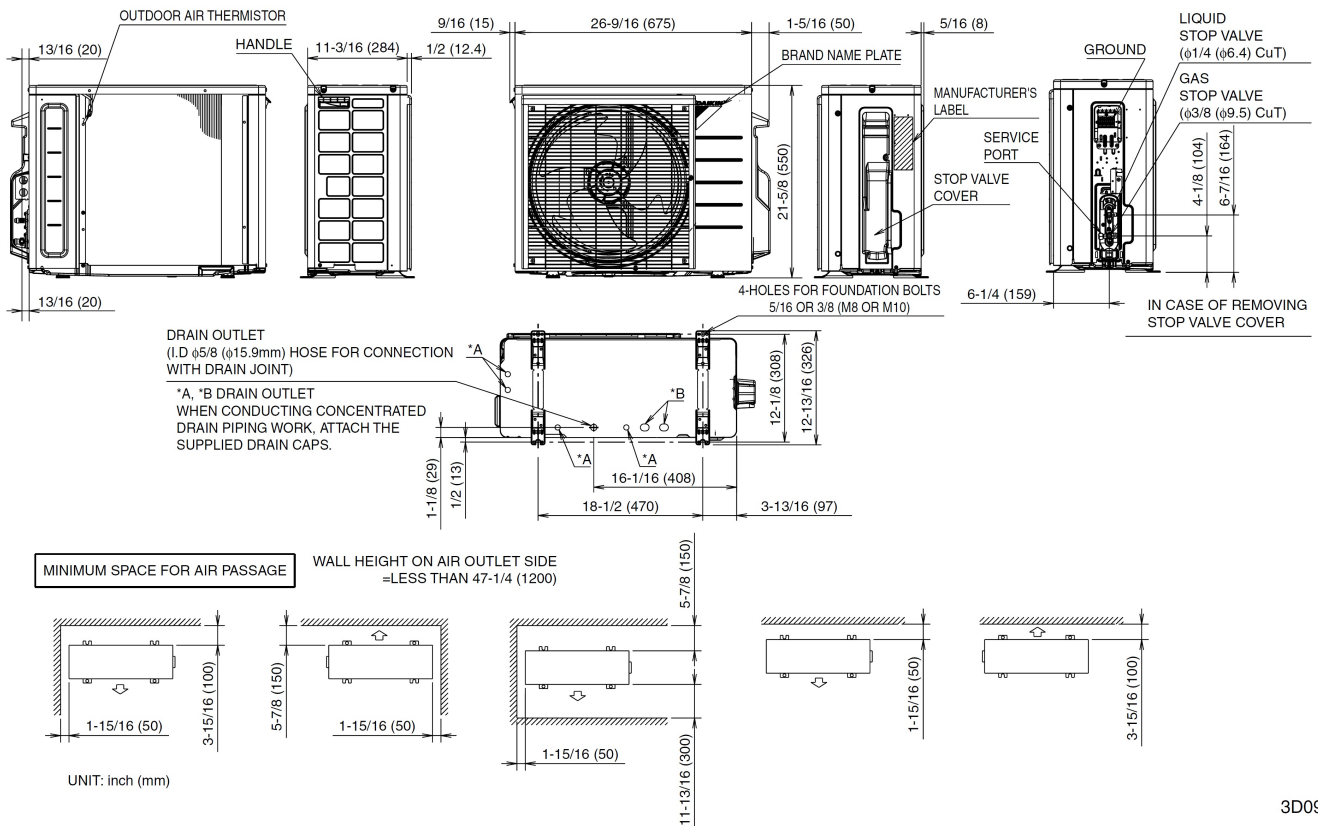
1.0-Ton Wall Mounted Unit
FTX12NMVJURXL12QMVJU

OUTDOOR UNIT DETAILS

Power Supply (V/Hz/Ph):	208-230 / 60 / 1	Compressor Type:	Inverter
Power Supply Connections:	L1, L2, Ground	Capacity Control Range (%):	-
Min. Circuit Amps MCA (A):	13.00	Airflow Rate (H/SL) (CFM):	1,144/865
Max Overcurrent Protection (MOP) (A):	15.00	Gas Pipe Connection (inch):	3/8
Max Starting Current MSC(A):		Liquid Pipe Connection (inch):	1/4
Rated Load Amps RLA(A):	12.0	Sound Pressure (H) (dBA):	50
Dimensions (HxWxD) (in):	21-5/8 x 26-9/16 x 11-3/16	Sound Power Level (dBA):	
Net Weight (lb):	70		

DIMENSIONAL DRAWING - OUTDOOR UNIT

RXL09/12QMVJU



3D092206A

Daikin North America LLC, 5151 San Felipe, Suite 500, Houston, TX, 77056

Daikin City Generated Submittal Data

www.daikinac.com www.daikincomfort.com

(Daikin's products are subject to continuous improvements. Daikin reserves the right to modify product design, specifications and information in this data sheet without notice and without incurring any obligations)

Submittal Date: 1/13/2017 6:40:37 AM

Page 4 of 4