



## Submittal Data Sheet

0.75-Ton Wall Mounted Unit

FTX09NMVJURXL09QMVJU

### FEATURES

- IR controller included
- Titanium apatite photocatalytic air purification filter (option)
- Hot start technology
- Auto-restart (after power failure)

### INDOOR UNIT



### BENEFITS

- Quiet operation
- Low ambient cooling operation down to -4° F with field setting and wind baffle (KPW937A4)
- Operating Range - Cooling (50° - 114.8°)
- Operating Range - Heating (-13° - 60°)
- 12 Year limited parts warranty with online registration
- 5 Year limited parts warranty for commercial applications

### OUTDOOR UNIT





## Submittal Data Sheet

0.75-Ton Wall Mounted Unit

FTX09NMVJURXL09QMVJU

### SYSTEM PERFORMANCE

Indoor Unit Model No.	FTX09NMVJU	Indoor Unit Name:	19 SEER HP DUCTLESS ID 3/4 TON
Outdoor Unit Model No.	RXL09QMVJU	Outdoor Unit Name:	18 SEER HP DUCTLESS OD 3/4 TON
Rated Cooling Capacity (Btu/hr):	9,000	Rated Cooling Conditions:	Indoor (°F DB/WB): 80 / 67 Ambient (°F DB/WB): 95 / 75
Sensible Capacity (Btu/hr):	8,170	Rated Piping Length(ft):	25
Max/Min Cooling Capacity (Btu/hr):	10,900 / 4,400	Rated Height Difference (ft):	49.00
Cooling Input Power (kW):	2.640	Rated Heating Conditions:	Indoor (°F DB/WB): 70 / 70 Ambient (°F DB/WB): 47 / 43
SEER (Non-Ducted/Ducted):	20.00 /	HSPF (Non-Ducted/Ducted):	12.5 /
EER (Non-Ducted/Ducted):	12.50 /	Heating COP (Non-Ducted/Ducted):	4.2 /
Rated Heating Capacity (Btu/hr):	10,900		
Max/Min Heating Capacity (Btu/hr):	16,000 / 4,400		
Heating Input Power (kW):	3.20		

### SYSTEM DETAILS

Refrigerant Type:	R-410A	Cooling Operation Range (°F DB):	50 - 115
Holding Refrigerant Charge (lbs):	2.1	Heating Operation Range (°F WB):	-13 - 75
Additional Charge (lb/ft):	0.21	Max. Pipe Length (Vertical) (ft):	49
Pre-charge Piping (Length) (ft):		Cooling Range w/Baffle (°F DB):	0 - 115
Max. Pipe Length (Total) (ft):	66	Heating Range w/Baffle (°F WB):	- 75
Max Height Separation (Ind to Ind ft):	49		

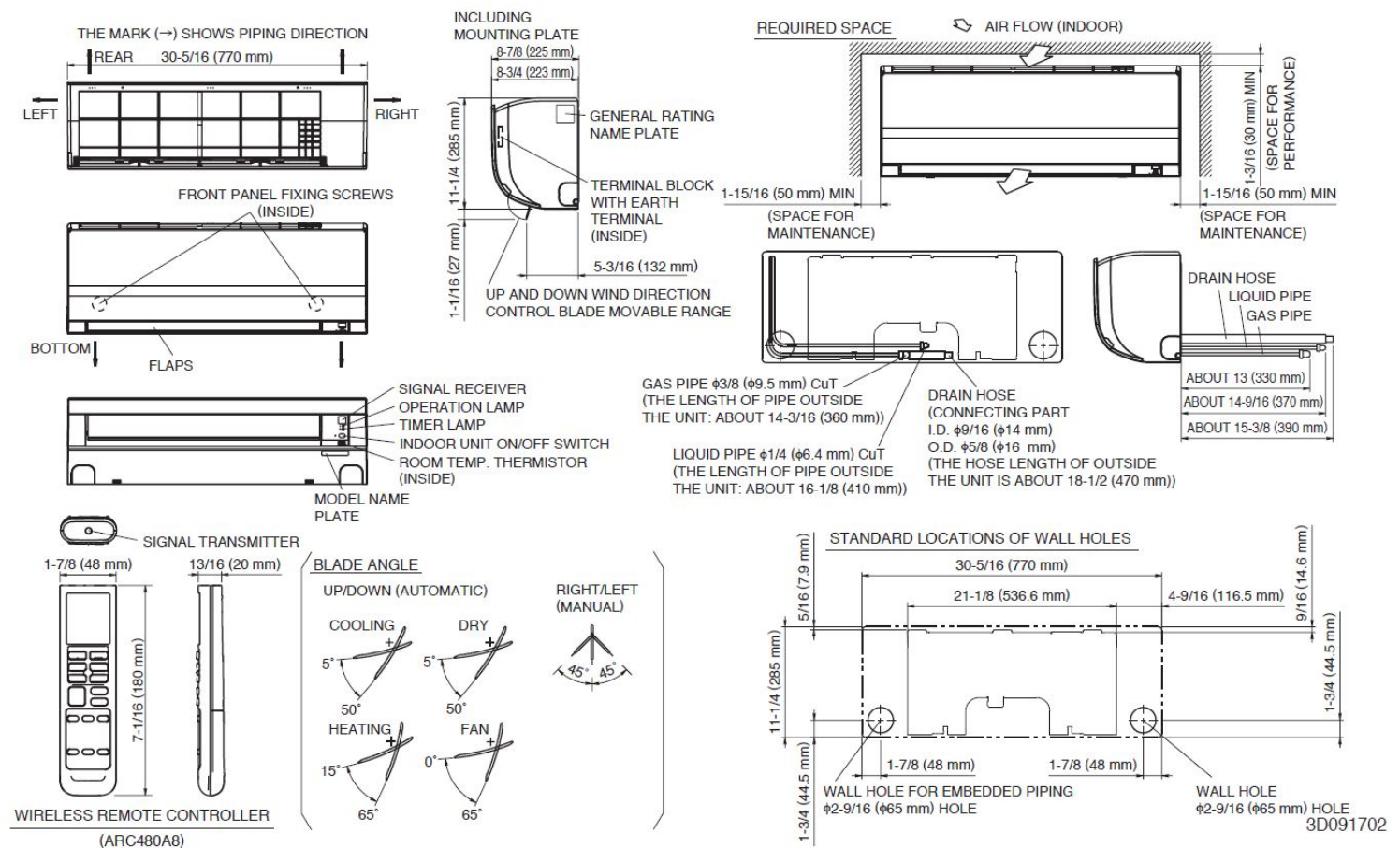
# Submittal Data Sheet

0.75-Ton Wall Mounted Unit  
FTX09NMVJURXL09QMVJU

## INDOOR UNIT DETAILS

Power Supply (V/Hz/Ph):	208-230 / 60 / 1	Airflow Rate (H/M/L/SL) (CFM):	417/297/244/141
Power Supply Connections:	See Outdoor Unit for Electrical Specs	Moisture Removal (Gal/hr):	0.3
Min. Circuit Amps MCA (A):		Gas Pipe Connection (inch):	3/8
Max Overcurrent Protection (MOP) (A):		Liquid Pipe Connection (inch):	1/4
Dimensions (HxWxD) (in):	11-1/4 x 30-5/16 x 8-3/4	Condensate Connection (inch):	5/8
Panel (HxWxD) (in):		Sound Pressure (H/M/L/SL) (dBA):	43/36/30/19
Net Weight (lb):	18	Sound Power Level (dBA):	
Panel Weight (lb):		Ext. Static Pressure (Rated/Max) (inWg):	/

## DIMENSIONAL DRAWING - INDOOR UNIT





## Submittal Data Sheet

0.75-Ton Wall Mounted Unit

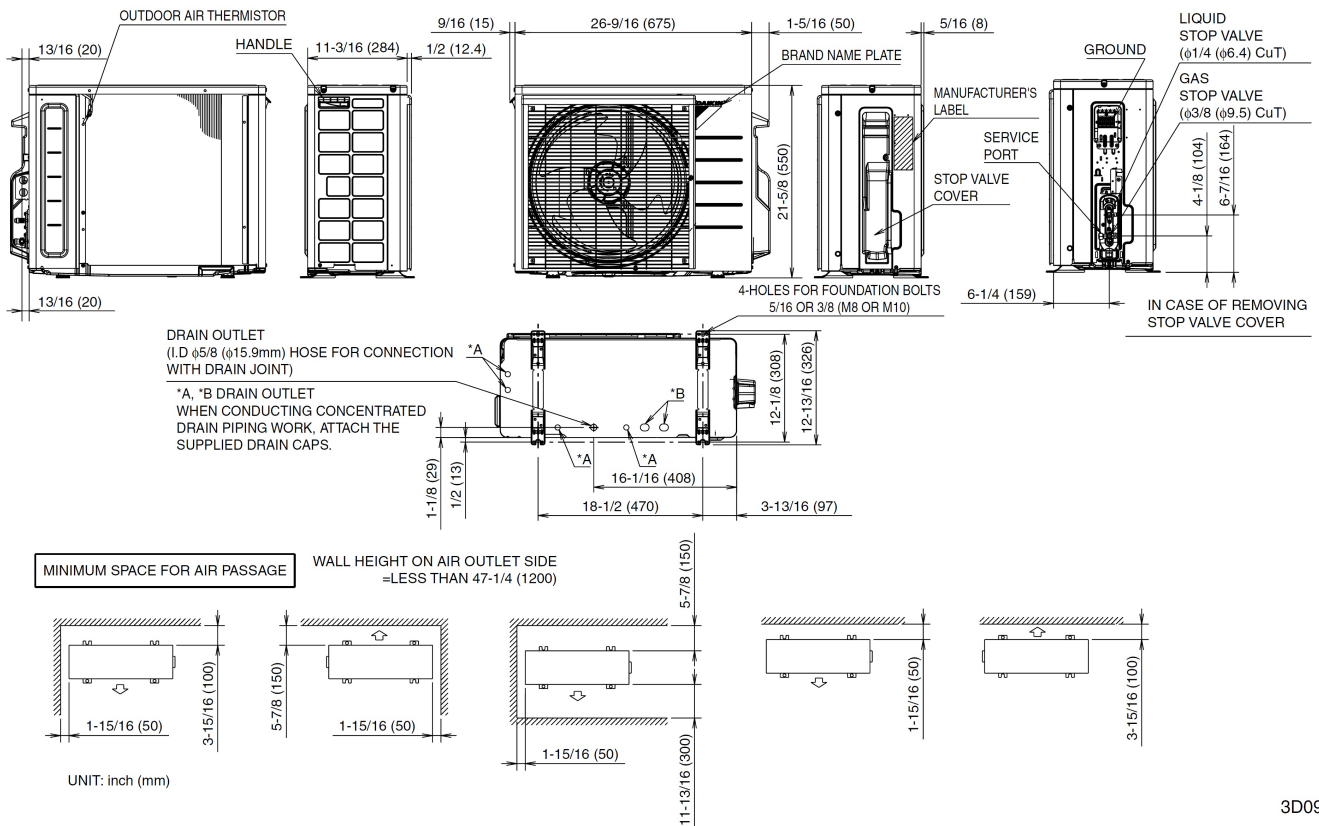
FTX09NMVJURXL09QMVJU

### OUTDOOR UNIT DETAILS

Power Supply (V/Hz/Ph):	208-230 / 60 / 1	Compressor Type:	Inverter
Power Supply Connections:	L1, L2, Ground	Capacity Control Range (%):	-
Min. Circuit Amps MCA (A):	9.50	Airflow Rate (H/SL) (CFM):	1,105/865
Max Overcurrent Protection (MOP) (A):	15.00	Gas Pipe Connection (inch):	3/8
Max Starting Current MSC(A):		Liquid Pipe Connection (inch):	1/4
Rated Load Amps RLA(A):	8.5	Sound Pressure (H) (dBA):	49
Dimensions (HxWxD) (in):	21-5/8 x 26-9/16 x 11-3/16	Sound Power Level (dBA):	
Net Weight (lb):	60		

## DIMENSIONAL DRAWING - OUTDOOR UNIT

RXL09/12QMVJU



3D092206A

Daikin North America LLC, 5151 San Felipe, Suite 500, Houston, TX, 77056

Daikin City Generated Submittal Data

[www.daikinac.com](http://www.daikinac.com) [www.daikincomfort.com](http://www.daikincomfort.com)

(Daikin's products are subject to continuous improvements. Daikin reserves the right to modify product design, specifications and information in this data sheet without notice and without incurring any obligations)

Submittal Date: 1/13/2017 6:40:08 AM

Page 4 of 4