



Submittal Data Sheet

VISTA (1.25 Ton 2 X 2 Flat Cassette) System

FFQ15Q2VJURX15QMVJU

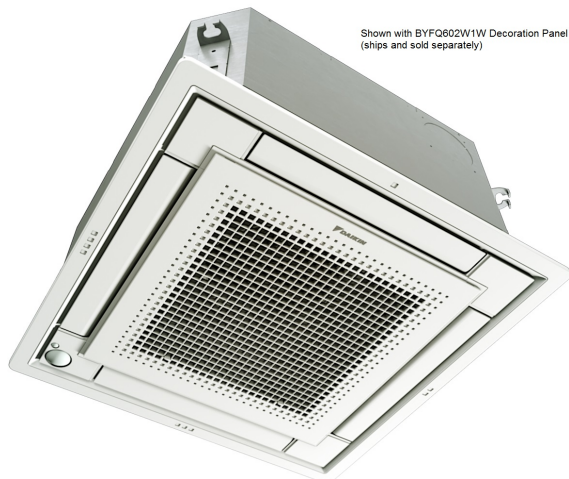
FEATURES

- IR controller included
- 3-D airflow - Auto-swing (up, down and right, left)
- Intelligent eye occupancy sensor (optional)
- Titanium apatite photo catalytic air purifying filter
- Hot start technology
- Auto-restart (after power failure)
- Weekly Timer (Up to 4 events per day)
- Comfort Airflow
- Quiet operation
- 2,3, or 4-way airflow pattern
- Built-in condensate pump (up to 22")
- Fresh air intake knockout
- Individual Flap Control

BENEFITS

- 12 year limited parts and compressor warranty with online registration
- 5 Year limited parts warranty for commercial applications
- Optional Sensor Panel (Occupancy Sensor, Comfort Airflow, Floor Sensor) BRYQ60A2(W/S)

INDOOR UNIT



OUTDOOR UNIT



* Complete warranty details available from your local dealer or at www.daikincomfort.com. To receive the 12-Year Parts Limited Warranty, online registration must be completed within 60 days of installation. Online registration and some of the additional requirements are not required in California or Quebec.



* Complete warranty details available from your local dealer or at www.daikincomfort.com. To receive the 12-Year Parts Limited Warranty, online registration must be completed within 60 days of installation. Online registration and some of the additional requirements are not required in California or Quebec.

NOTES

- Requires P1/P2 controller (Not included)
- Requires either BYFQ60C2W1W or BYFQ602W1S Decoration Panel (ships separately)

Daikin North America LLC, 5151 San Felipe, Suite 500, Houston, TX, 77056

Daikin City Generated Submittal Data

www.daikinac.com www.daikincomfort.com

(Daikin's products are subject to continuous improvements. Daikin reserves the right to modify product design, specifications and information in this data sheet without notice and without incurring any obligations)

Submittal Date: 1/12/2017 8:41:42 AM

Page 1 of 4



Submittal Data Sheet

VISTA (1.25 Ton 2 X 2 Flat Cassette) System

FFQ15Q2VJURX15QMVJU

SYSTEM PERFORMANCE

Indoor Unit Model No.	FFQ15Q2VJU	Indoor Unit Name:	INV CEILING MOUNTED TYPE ID
Outdoor Unit Model No.	RX15QMVJU	Outdoor Unit Name:	MULTI SPLIT OD
Rated Cooling Capacity (Btu/hr):	14,400	Rated Cooling Conditions:	Indoor (°F DB/WB): 80 / 67 Ambient (°F DB/WB): 95 / 75
Sensible Capacity (Btu/hr):		Rated Piping Length(ft):	25
Max/Min Cooling Capacity (Btu/hr):	16,200 / 5,100	Rated Height Difference (ft):	65.60
Cooling Input Power (kW):		Rated Heating Conditions:	Indoor (°F DB/WB): 70 / 60 Ambient (°F DB/WB): 47 / 43
SEER (Non-Ducted/Ducted):	20.70 /	HSPF (Non-Ducted/Ducted):	11.0 /
EER (Non-Ducted/Ducted):	12.50 /	Heating COP (Non-Ducted/Ducted):	3.9 /
Rated Heating Capacity (Btu/hr):	16,200		
Max/Min Heating Capacity (Btu/hr):	16,300 / 5,200		

SYSTEM DETAILS

Refrigerant Type:	R-410A	Cooling Operation Range (°F DB):	50 - 115
Holding Refrigerant Charge (lbs):	2.5	Heating Operation Range (°F WB):	5 - 64
Additional Charge (lb/ft):	0.21	Max. Pipe Length (Vertical) (ft):	
Pre-charge Piping (Length) (ft):	32	Cooling Range w/Baffle (°F DB):	-
Max. Pipe Length (Total) (ft):	98	Heating Range w/Baffle (°F WB):	-
Max Height Separation (Ind to Ind ft):	66		

Submittal Data Sheet

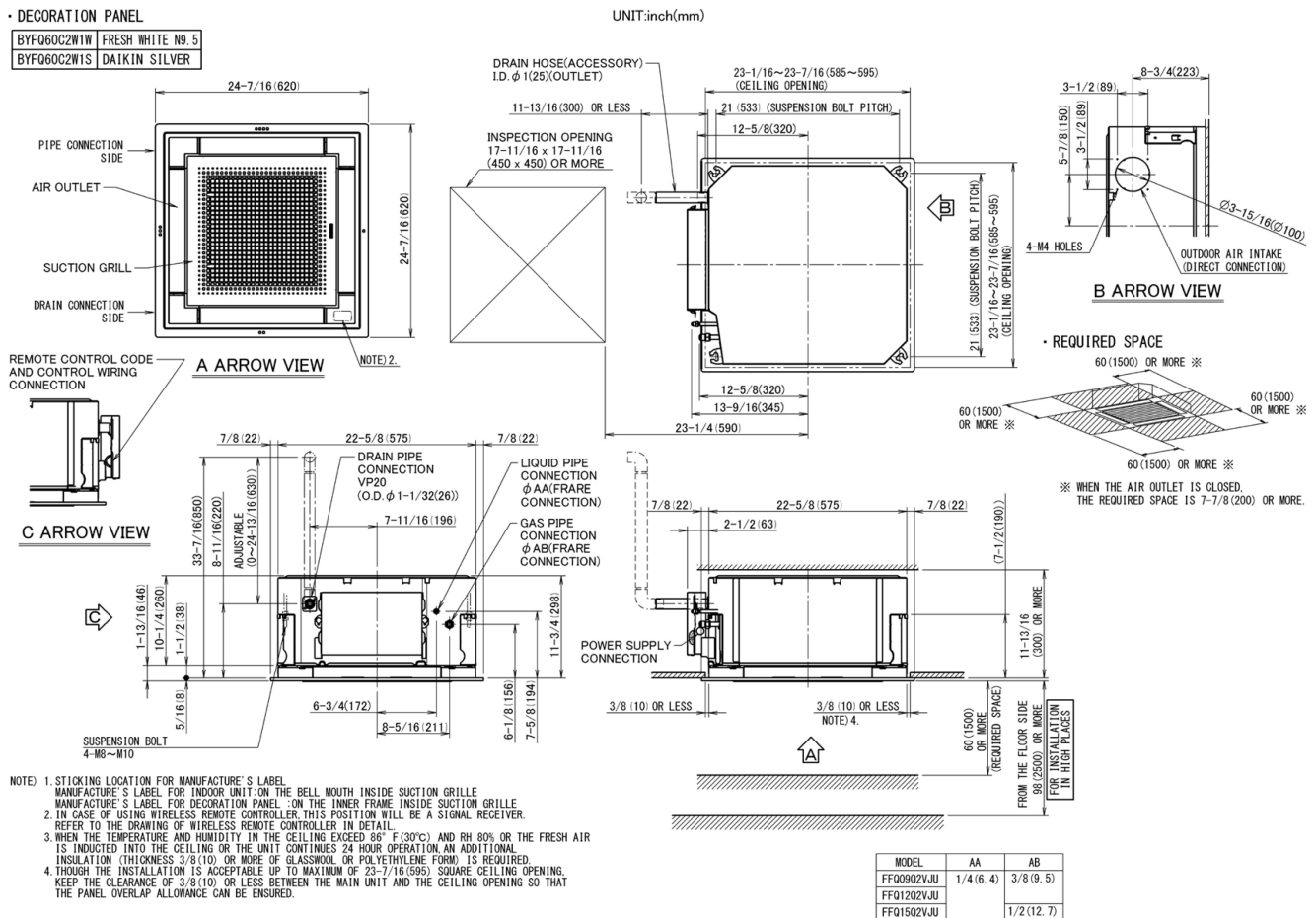
VISTA (1.25 Ton 2 X 2 Flat Cassette) System

FFQ15Q2VJURX15QMVJU

INDOOR UNIT DETAILS

Power Supply (V/Hz/Ph):	208-230 / 60 / 1	Airflow Rate (H/M/L) (CFM):	420/367/293
Power Supply Connections:	See Outdoor Unit for Electrical Specs	Moisture Removal (Gal/hr):	
Min. Circuit Amps MCA (A):		Gas Pipe Connection (inch):	1/2
Max Overcurrent Protection (MOP) (A):		Liquid Pipe Connection (inch):	1/4
Dimensions (HxWxD) (in):	10-1/4 x 22-5/8 x 22-5/8	Condensate Connection (inch):	1-1/32
Panel (HxWxD) (in):	1-13/16 x 24-7/16 x 24-7/16	Sound Pressure (H/M/L) (dBA):	40/37/31
Net Weight (lb):		Sound Power Level (dBA):	
Panel Weight (lb):	6	Ext. Static Pressure (Rated/Max) (inWg):	/

DIMENSIONAL DRAWING - INDOOR UNIT





Submittal Data Sheet

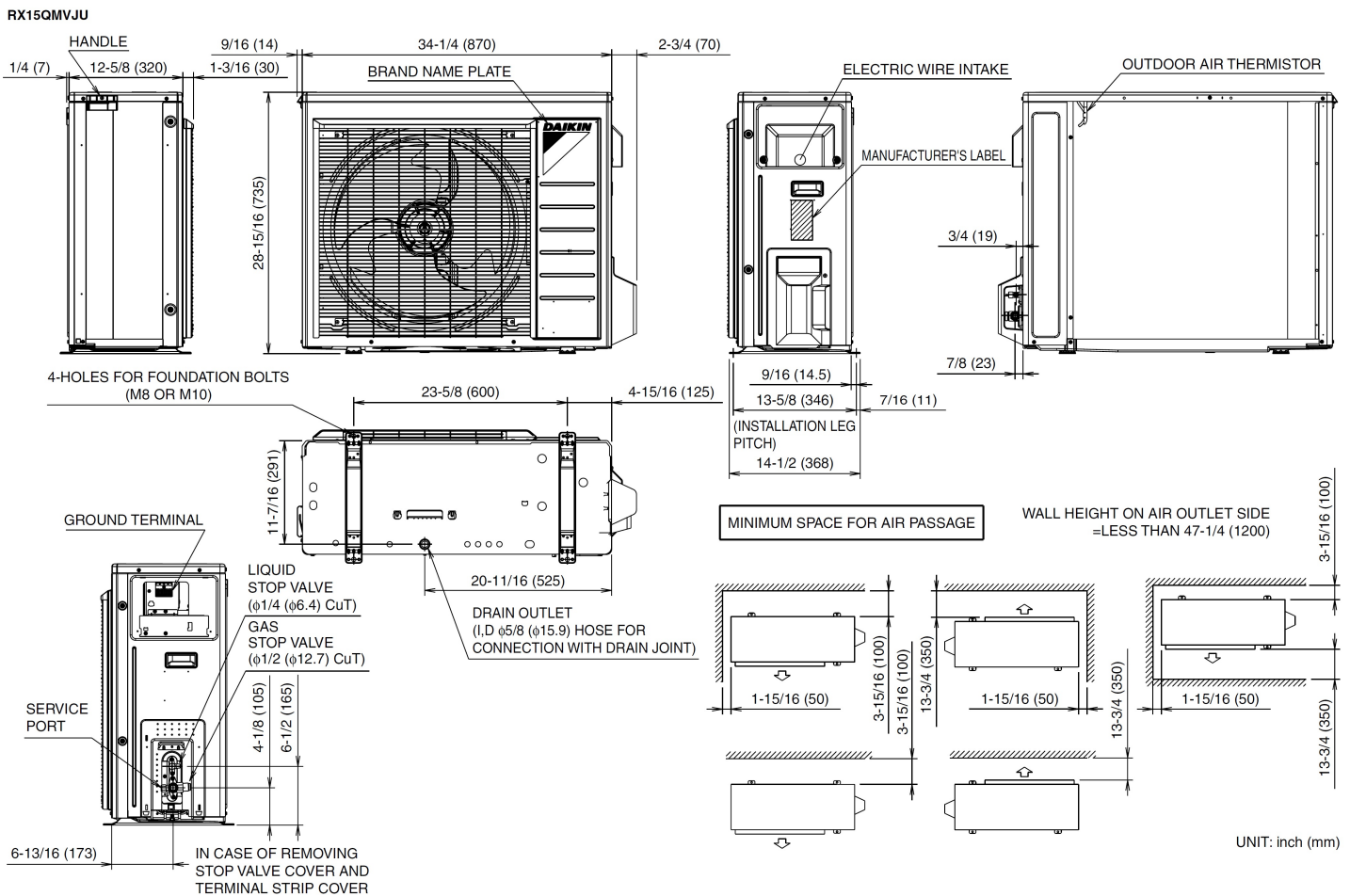
VISTA (1.25 Ton 2 X 2 Flat Cassette) System

FFQ15Q2VJURX15QMVJU

OUTDOOR UNIT DETAILS

Power Supply (V/Hz/Ph):	208-230 / 60 / 1	Compressor Type:	Inverter
Power Supply Connections:		Capacity Control Range (%):	-
Min. Circuit Amps MCA (A):	9.10	Airflow Rate (H) (CFM):	1,896
Max Overcurrent Protection (MOP) (A):	15.00	Gas Pipe Connection (inch):	1/2
Max Starting Current MSC(A):	8.00	Liquid Pipe Connection (inch):	1/4
Rated Load Amps RLA(A):	8.0	Sound Pressure (H) (dBA):	50
Dimensions (HxWxD) (in):	28-15/16 x 34-1/4 x 12-5/8	Sound Power Level (dBA):	
Net Weight (lb):	97		

DIMENSIONAL DRAWING - OUTDOOR UNIT



Daikin North America LLC, 5151 San Felipe, Suite 500, Houston, TX, 77056

Daikin City Generated Submittal Data

www.daikinac.com www.daikincomfort.com

(Daikin's products are subject to continuous improvements. Daikin reserves the right to modify product design, specifications and information in this data sheet without notice and without incurring any obligations)

Submittal Date: 1/12/2017 8:41:42 AM

Page 4 of 4