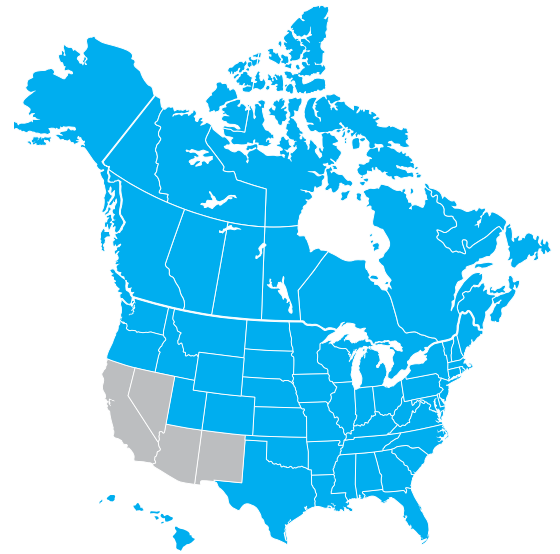




Daikin
EMURA
Wall Mount



| Product Class | Northern U.S. Region Standard Levels | Southeast U.S. Region Standard Levels |
|-------------------------------|--------------------------------------|---------------------------------------|
| Split-System Air Conditioners | SEER = 13 | SEER = 14 |
| Split-System Heat Pumps | SEER = 14 HSPF = 8.2 | SEER = 14 HSPF = 8.2 |

Some units in this document comply with U.S. Department of Energy Regional Standards for the Southwest Region. All units in this document are eligible to be sold in Canada.

DAIKIN SINGLE AND MULTI-ZONE SYSTEMS

The units detailed in this flyer meet the 2015 U.S. Department of Energy Regional Standards for the Northern & Southeast regions.

SINGLE ZONE SYSTEMS

| | 17 Series – Heat Pump and Cooling Only | | | | 19 Series – Heat Pump and Cooling Only | | | |
|--|--|----------------------------|----------------------------|----------------------------|--|----------------------------|----------------------------|----------------------------|
| IDU Cooling Only | FTKB09AXVJU | FTKB12AXVJU | FTKB18AXVJU | FTKB24AXVJU | FTK09AXVJU | FTK12AXVJU | FTK18AXVJU | FTK24AXVJU |
| IDU Heat Pump | FTXB09AXVJU | FTXB12AXVJU | FTXB18AXVJU | FTXB24AXVJU | FTX09AXVJU | FTX12AXVJU | FTX18AXVJU | FTX24AXVJU |
| ODU Cooling Only | RKB09AXVJU | RKB12AXVJU | RKB18AXVJU | RKB24AXVJU | RK09AXVJU | RK12AXVJU | RK18AXVJU | RK24AXVJU |
| ODU Heat Pump | RXB09AXVJU | RXB12AXVJU | RXB18AXVJU | RXB24AXVJU | RX09AXVJU | RX12AXVJU | RX18AXVJU | RX24AXVJU |
| Cooling Capacity Rated (Min - Max) Btu/hr | 8,800 (4,400 - 10,200) | 11,000 (4,400 - 16,200) | 18,000 (4,300 - 21,200) | 21,200 (6,000 - 22,200) | 8,900 (4,400 - 10,200) | 10,900 (4,400 - 13,300) | 18,000 (5,500 - 20,000) | 21,200 (5,500 - 24,000) |
| Heating Capacity Rated (Min - Max) Btu/hr | 9,400 (4,400 - 13,600) | 11,300 (4,400 - 16,200) | 17,900 (4,000 - 22,500) | 21,200 (4,100 - 27,300) | 10,000 (4,400 - 13,000) | 13,500 (4,400 - 16,400) | 21,600 (5,500 - 24,000) | 23,600 (5,800 - 27,600) |
| SEER | 17 | | | | 19 | | 18.5 | 19 |
| EER | 11 | 8.5 | 10.5 | 11 | 12.5 | | | |
| HSPF (Heat Pumps) | 9 | | | | 10 | | 9 | |
| AHRI Cooling Only # | 10578900 | 10571502 | 10571503 | 10571504 | 205782844 | 205782849 | 205782850 | 205782851 |
| AHRI Heat Pump # | 10578901 | 10574119 | 10574896 | 10575515 | 205782845 | 205782846 | 205782847 | 205782848 |
| MOP | 15 | | 20 | | 15 | | 20 | |
| Line Size (in.) (mm) | 1/4 x 3/8 (6.4 x 9.5) | | 1/4 x 1/2 (6.4 x 12.7) | 1/4 x 5/8 (6.4 x 15.9) | 1/4 x 3/8 (6.4 x 9.5) | | 1/4 x 1/2 (6.4 x 12.7) | 1/4 x 5/8 (6.4 x 15.9) |
| Max Length (ft.) (m) | 65.625 (20) | | 98.4 (30) | | 65.625 (20) | | 98.4 (30) | |
| Max Height (ft.) (m) | 32.8 (10) | | | | 49.25 (15) | | 65.625 (20) | |
| Chargeless (ft.) (m) | 24.6 (7.5) | | | | 32.8 (10) | | | |
| Add'l Charge (oz./ft.) (g/m) | 0.21 (20) | | | | 0.21 (20) | | | |
| Cooling Operating Range | 50 - 115°F (10 - 46°C) | | | | 50 - 115°F (10 - 46°C) | | | |
| Cooling Range with Jumper | - | | | | 5 - 115°F (-15 - 46°C) | | | |
| Cooling Range with Air Direction Adjustment Grille | - | | | | -4 - 115°F (-20 - 46°C) | | | |
| Air Direction Adjustment Grille | - | | - | | KPW937F4 | | KPW063B4E | |
| Heating Operating Range | 5 - 65°F (-15 - 18°C) | | | | 5 - 65°F (-15 - 18°C) | | | |
| Drain Pan Heater | - | | - | | KEH067A41E | | KEH063A4EA | |

| | SkyAir FAO Wall Mount – Heat Pump & Cooling Only | | SkyAir FBQ Slim Duct – Heat Pump & Cooling Only | | | | | | | | |
|--------------------|--|--------------------------|---|-------------|--------------------------|-------------|------------------------|-------------|-------------|-----------|--|
| | IDU | FAO18TAVJU | FAO24TAVJU | FBQ18PVJU | FBQ24PVJU | FBQ30PVJU | FBQ36PVJU | FBQ42PVJU | FBQ48PVJU | FBQ | |
| | ODU Cooling Only | RZR18TAVJUA | RZR24TAVJUA | RZR18TAVJUA | RZR24TAVJUA | RZR30TAVJUA | RZR36TAVJUA | RZR42TAVJUA | RZR48TAVJUA | RZR | |
| | ODU Heat Pump | RZQ18TAVJUA | RZQ24TAVJUA | RZQ18TAVJUA | RZQ24TAVJUA | RZQ30TAVJUA | RZQ36TAVJUA | RZQ42TAVJUA | RZQ48TAVJUA | RZQ | |
| Rated Capacity | Cooling | 18,000 | 24,000 | 18,000 | 24,000 | 30,000 | 36,000 | 40,500 | 48,000 | | |
| | Heating | 20,000 | 27,000 | 20,000 | 27,000 | 34,000 | 40,000 | 47,000 | 54,000 | | |
| Performance | SEER | 17.0 | 17.6 | 16.7 | 16.5 | 16.0 | 17.5 | 16 | 14 | | |
| | EER | 11.9 | 10.2 | 13 | 12 | 10.5 | 11.1 | 10.1 | 8.6 | | |
| | HSPF (Heat Pump) | 8.2 | 8.4 | 9.5 | 9.7 | 9.2 | 9.1 | 8.8 | 8.4 | | |
| AHRI Cert. # | AHRI Cooling Only # | 205707032 | 205707033 | 205707013 | 205707014 | 205707015 | 205707016 | 205707017 | 205707018 | 205707019 | |
| | AHRI Heat Pump # | 205801307 | 205706996 | 205801306 | 205707005 | 205707006 | 205706994 | 205707007 | 205706995 | 205707008 | |
| Installation Specs | MOP IDU | 15 | | 15 | | | | | | | |
| | MOP ODU | 20 | | | 20 | | | 35 | | | |
| | Line Size (in.) (mm) | 3/8 x 5/8 (9.5 x 15.9) | | | | | 3/8 x 5/8 (9.5 x 15.9) | | | | |
| | Max Length (ft.) (m) | 164 (50) | | | 164 (50) | | | 230 (70) | | | |
| | Max Height (ft.) (m) | 98.4 (30) | | | | | 98.4 (30) | | | | |
| | Chargeless (ft.) (m) | 15 (4.5) | | | | | 15 (4.5) | | | | |
| | Add'l Charge (lb./ft.) (kg/m) | 0.036 (0.0535) | | | | | 0.036 (0.0535) | | | | |
| Operating Range | Cooling | 23 - 122°F (-5 - 50°C) | | | 23 - 122°F (-5 - 50°C) | | | | | | |
| | Cooling with Air Direction Adjustment Grille | 0 - 122°F (-17.8 - 50°C) | | | 0 - 122°F (-17.8 - 50°C) | | | | | | |
| | Air Direction Adjust. Grille | KPW5G112 | | | KPW5G112 | | | KPW5F80 x 2 | | | |
| | Heating | -4 - 60°F (-20 - 15.5°C) | | | -4 - 60°F (-20 - 15.5°C) | | | | | | |
| | Drain Pan Heater | KEHJ5A160E | | | KEHJ5A160E | | | | | | |

| | SkyAir FTQ Air Handling Unit Heat Pump & Cooling Only | | | | | | | |
|--------------------|---|--|----------------|----------------|---|----------------|---|--|
| | IDU | FTQ18 TAVJUD/A | FTQ24 TAVJUD/A | FTQ30 TAVJUD/A | FTQ36 TAVJUD/A | FTQ42 TAVJUD/A | FTQ48 TAVJUD/A | |
| | ODU Cooling Only | RZR18TAVJUA | RZR24TAVJUA | RZR30TAVJUA | RZR36TAVJUA | RZR42TAVJUA | RZR48TAVJUA | |
| | ODU Heat Pump | RZQ18TAVJUA | RZQ24TAVJUA | RZQ30TAVJUA | RZQ36TAVJUA | RZQ42TAVJUA | RZQ48TAVJUA | |
| Rated Capacity | Cooling (Min-Max) | 18,000 | 24,000 | 30,000 | 36,000 | 42,000 | 48,000 | |
| | Heating (Min-Max) | 20,000 | 27,000 | 34,000 | 40,000 | 47,000 | 54,000 | |
| Performance | SEER | 15.5 | 15.2 | 16 | 15.3 | 16 | 14.8 | |
| | EER | 12.5 | 10.3 | 12.5 | 11.3 | 11 | 9.5 | |
| | HSPF (Heat Pump) | 8.6 | 9.4 | 10.4 | 9.5 | 9 | 9 | |
| AHRI Cert. # | AHRI Cooling Only # | 205707049 | 205707045 | 205707050 | 205707046 | 205707047 | 205707048 | |
| | AHRI Heat Pump # | 205801309 | 205707002 | 205754949 | 205707003 | 205707004 | 205707012 | |
| Installation Specs | MOP IDU | 15 | | | | | | |
| | MOP ODU | 20 | | | 35 | | | |
| | Line Size (in.) (mm) | 3/8 x 5/8 (9.5 x 15.9) | | | | | | |
| | Max Length (ft.) (m) | 164 (50) | | | 230 (70) | | | |
| | Max Height (ft.) (m) | 98.4 (30) | | | | | | |
| | Chargeless (ft.) (m) | 15 (4.5) | | | | | | |
| | Add'l Charge | (0.036 x piping length) + .10 lb./ft. ((0.0535 x piping length) + 0.05 kg/m) | | | (0.036 x piping length) + 0.71 lb./ft. ((0.0535 x piping length) + 0.32 kg/m) | | (0.036 x piping length) + 1.05 lb./ft. ((0.0535 x piping length) + 0.48 kg/m) | |
| Operating Range | Cooling | 23 - 122°F (-5 - 50°C) | | | | | | |
| | Cooling with Jumper | - | | | | | | |
| | Cooling with Air Direction Adjustment | 0 - 122°F (-17.8 - 50°C) | | | | | | |
| | Air Direction Adjust. Grille | KPW5G112 | | | KPW5F80 x 2 | | | |
| | Heating | -4 - 60°F (-20 - 15.5°C) | | | | | | |
| | Drain Pan Heater | KEHJ5A160E | | | | | | |

| SkyAir FCQ Round Flow Sensing Ceiling Cassette – Heat Pump & Cooling Only | | | | | | SkyAir FHO Ceiling Suspended – Heat Pump & Cooling Only | | | | |
|---|-------------|-------------|-------------|-------------|-------------|---|-------------|-------------|-------------|-------------|
| FCQ18TAVJU | FCQ24TAVJU | FCQ30TAVJU | FCQ36TAVJU | FCQ42TAVJU | FCQ48TAVJU | FHO18PVJU | FHO24PVJU | FHO30PVJU | FHO36MVJU | FHO42MVJU |
| RZR18TAVJUA | RZR24TAVJUA | RZR30TAVJUA | RZR36TAVJUA | RZR42TAVJUA | RZR48TAVJUA | RZR18TAVJUA | RZR24TAVJUA | RZR30TAVJUA | RZR36TAVJUA | RZR42TAVJUA |
| RZO18TAVJUA | RZO24TAVJUA | RZO30TAVJUA | RZO36TAVJUA | RZO42TAVJUA | RZO48TAVJUA | RZO18TAVJUA | RZO24TAVJUA | RZO30TAVJUA | RZO36TAVJUA | RZO42TAVJUA |
| 18,000 | 24,000 | 30,000 | 36,000 | 42,000 | 48,000 | 18,000 | 24,000 | 30,000 | 36,000 | 40,500 |
| 20,000 | 27,000 | 34,000 | 40,000 | 47,000 | 54,000 | 20,000 | 27,000 | 34,000 | 40,000 | 40,000 |
| 18.6 | 18.5 | 17.2 | 17.6 | 17 | 17 | 16.3 | 16.6 | 16 | 14 | 14.0 |
| 13.0 | 12 | 9.3 | 11.4 | 10.3 | 9 | 12.9 | 11.3 | 10.5 | 9.5 | 8.8 |
| 10.1 | 10.2 | | 9 | 8.6 | 9.3 | 9.1 | 9.3 | 8.4 | 8.2 | |
| 05707034 | 205707035 | 205707036 | 205707037 | 205707038 | 205707039 | 205707040 | 205707041 | 205707042 | 205707043 | 205707044 |
| 05801310 | 205707010 | 205707009 | 205706997 | 205707010 | 205707011 | 205801308 | 205706998 | 205706999 | 205707000 | 205707001 |
| 15 | | | | | | 15 | | | | |
| 20 | | | 35 | | | 20 | | 35 | | |
| 3/8 x 5/8 (9.5 x 15.9) | | | | | | 3/8 x 5/8 (9.5 x 15.9) | | | | |
| 164 (50) | | 230 (70) | | | | 164 (50) | | 230 (70) | | |
| 98.4 (30) | | | | | | 98.4 (30) | | | | |
| 15 (4.5) | | | | | | 15 (4.5) | | | | |
| 0.036 (0.0535) | | | | | | 0.036 (0.0535) | | | | |
| 23 - 122°F (-5 - 50°C) | | | | | | 23 - 122°F (-5 - 50°C) | | | | |
| 0 - 122°F (-17.8 - 50°C) | | | | | | 0 - 122°F (-17.8 - 50°C) | | | | |
| KPW5G112 | | KPW5F80 x 2 | | | | KPW5G112 | | KPW5F80 x 2 | | |
| -4 - 60°F (-20 - 15.5°C) | | | | | | -4 - 60°F (-20 - 15.5°C) | | | | |
| KEHJ5A160E | | | | | | KEHJ5A160E | | | | |

| NV Series Heat Pump & Cooling | | LV 30/36 – Cooling Only | |
|-------------------------------|-----------------------------|-----------------------------|-----------------------------|
| FTX30NVJU | FTX36NVJU | FTXS30LVJU | FTXS36LVJU |
| RK30NMVJUA | RK36NMVJUA | RKS30LVJUA | RKS36LVJUA |
| RX30NMVJUA | RX36NMVJUA | - | - |
| 31,400 (10,200 - 31,400) | 34,400 (10,200 - 34,400) | 30,000 (10,200 - 30,000) | 36,000 (10,200 - 36,000) |
| 34,800 (10,200 - 34,800) | 36,000 (10,200 - 36,000) | - | - |
| 17.5 | 15.9 | 19.3 | 17.9 |
| 9.85 | 9.1 | 10.71 | 8.37 |
| 9.3 | 9.2 | - | - |
| 205663340 | 205663341 | 5433345 | 5433347 |
| 205663347 | 205663348 | - | - |
| 20 | | 20 | |
| 1/4 x 5/8 (6.4 x 15.9) | | 3/8 x 5/8 (9.5 x 15.9) | |
| 98.4 (30) | | 98.4 (30) | |
| 65.625 (20) | | 65.625 (20) | |
| 32.8 (10) | | 32.8 (10) | |
| 0.32 oz./ft. (30 g/m) | | 0.54 oz./ft. (50 g/m) | |
| 50 - 115°F (10 - 46°C) | | 50 - 115°F (10 - 46°C) | |
| 14 - 115°F (-10 - 46°C) | | 0 - 115°F (-17.8 - 46°C) | |
| -4 - 115°F (-20 - 46°C)* | | - | |
| KPW063B4 | | KPW5G112 | |
| 5 - 65°F (-15 - 18°C) | | - | |
| KEH063A4E | | - | |

| SkyAir Controls (Required with Unit) | |
|--|---|
| 2-Wire = (Non-shielded, 2-conductor, stranded, AWG-18) | |
| BRC1E73 | Wired <i>Navigation</i> Remote Controller |
| BRC1H71W | <i>Madoka</i> Remote Controller |
| AZAI6WSCDKA | DKN Wi-Fi Adaptor |
| AZAI6WSPDKC | DKN Plus Interface |
| DTST-ONE-ADA-A | Daikin <i>One+</i> Smart Thermostat |

| Single Zone and Multi-Zone Controls | |
|--|-------------------------------------|
| 4-Wire = (Non-shielded, 4-conductor, stranded, AWG-14) | |
| For CDXS, CTXS, FDXS, FTK, FTX, FTXG, FTXR, FTXS, FVXS | |
| BRC944B2-A08 | Wired Remote Controller |
| BRP072A43 | Wireless Interface Adaptor |
| DTST-ONE-ADA-A* | Daikin <i>One+</i> Smart Thermostat |
| AZAI6WSCDKB | DKN Residential WiFi adaptor |
| AZAI6WSPDKC | DKN Plus Interface |

| Wired Controller Adaptor for AURORA Wall Mounts | |
|---|---------------|
| KRP067A41 | Size: 09 / 12 |
| KRP980B2 | Size: 15 |

| For FFQ Cassette & FDMQ Ducted Concealed (Required with Unit) | |
|---|---|
| BRC1H71W | <i>Madoka</i> Remote Controller |
| BRC1E73 | Wired <i>Navigation</i> Remote Controller |
| AZAI6WSCDKA | DKN Wi-Fi Adaptor |
| DTST-ONE-ADA-A | Daikin <i>One+</i> Smart Thermostat |
| AZAI6WSPDKC | DKN Plus Interface |
| BRC082A42W/S | Wireless Remote Controller - FFQ |
| BRC082A43 | Wireless Remote Controller - FDMQ |

* -22 - 115°F (-30 - 60°C) possible on cooling only model with additional dipswitch setting

*Not compatible with FTK_A or FTX_A 19 Series units

| | | Daikin <i>AURORA</i> – Heat Pump | | | | | |
|-----------------------------------|--|----------------------------------|---------------------------|-------------------------|-------------------------|---------------------------|------------------------|
| | | IDU | FTX09NMVJU | FTX12NMVJU | FTX15NMVJU | FTX18UVJU | FTX24UVJU |
| | | ODU | RXL09QMVJU | RXL12QMVJU9 | RXL15QMVJUA | RXL18UMVJUA | RXL24UMVJUA |
| Rated Capacity (Min - Max) | Cooling | | 9,000 (4,400 ~ 10,900) | 10,600 (4,400 ~ 13,300) | 15,000 (5,800 ~ 18,400) | 18,000 (9,000-21,600) | 21,200 (9,000-25,800) |
| | Heating | | 10,900 (4,400 ~ 16,000) | 13,400 (4,400 ~ 18,800) | 18,300 (5,800 ~ 24,600) | 21,600 (9,000-28,000) | 24,000 (9,000-32,000) |
| | SEER | | 20 | | | 20.3 | |
| | EER | | 12.5 | | 13 | 12.5 | |
| | HSPF | | 12.5 | 12 | 12.5 | 10.3 | |
| AHRI # | AHRI | | 8849533 | 204717600 | 205663349 | 205663342 | 205663345 |
| Installation Specs | MOP | | 15 | | | 20 | |
| | Line Size (in.) (mm) | | 1/4 x 3/8 (6.4 x 9.5) | | 1/4 x 1/2 (6.4 x 12.7) | | 1/4 x 5/8 (6.4 x 15.9) |
| | Max Length (ft.) (m) | | 65.625 (20) | | | 98.4 (30) | |
| | Max Height (ft.) (m) | | 49.25 (15) | | | 65.625 (20) | |
| | Chargeless (ft.) (m) | | | | | | |
| | Add'l Charge (oz./ft.) (g/m) | | 0.21 (20) | | | 0.32 (30) | |
| Operating Range | Cooling | | | | | | |
| | Cooling with Jumper | | | | | | |
| | Cooling with Air Direction Adjustment Grille | | | | | | |
| | Air Direction Adjust. Grille | | KPW937F4 | | KPW063B4 | | |
| | Heating Operation Range | | -13 - 60°F (-25 - 15.5°C) | | | -13 - 65°F (-25 - 18.3°C) | |
| | Drain Pan Heater | | KEH067A41E | | KEH063A4E | | |

*FTX12NMVJURXL12QMVJU9 and FVXS12NVJURXL12QMVJU9 have a heating operation range of -13 - 65°F (-25 - 18.3°C) WB.

| | | FDMQ Ducted Concealed – Heat Pump | | | | | |
|-----------------------------------|--|-----------------------------------|----------------------------|----------------------------|----------------------------|----------------------------|----------------------------|
| | | IDU | FDMQ09RVJU | FDMQ12RVJU | FDMQ15RVJU | FDMQ18RVJU | FDMQ24RVJU |
| | | ODU | RX09RMVJU9 | RX12RMVJU9 | RX15RMVJUA | RX18RMVJU9A | RX24RMVJUA |
| Rated Capacity (Min - Max) | Cooling | | 9,000 (3,900 - 10,700) | 10,800 (4,000 - 12,800) | 14,400 (5,100 - 17,400) | 17,600 (5,100 - 19,600) | 21,800 (5,500 - 24,000) |
| | Heating | | 10,900 (3,900 - 14,000) | 13,600 (3,900 - 16,100) | 18,000 (5,600 - 18,500) | 21,600 (5,700 - 23,000) | 24,000 (6,400 - 27,600) |
| | SEER | | 17.8 | 19.4 | 20.2 | 18.5 | 18.6 |
| | EER | | 11.1 | 11.6 | 12.7 | 12.5 | 12.5 |
| | HSPF | | 10.3 | 10.6 | 10.3 | 10.3 | 10 |
| AHRI # | AHRI | | 202682020 | 202682021 | 205776148 | 205776150 | 205776151 |
| Installation Specs | MOP | | 15 | | | 20 | |
| | Line Size (in.) (mm) | | 1/4 x 3/8 (6.4 x 9.5) | | 1/4 x 1/2 (6.4 x 12.7) | | 1/4 x 5/8 (6.4 x 15.9) |
| | Max Length (ft.) (m) | | 65.625 (20) | | | 98.4 (30) | |
| | Max Height (ft.) (m) | | 49.25 (15) | | | 65.625 (20) | |
| | Chargeless (ft.) (m) | | 32.8 (10) | | | | |
| | Add'l Charge (oz./ft.) (g/m) | | 0.21 (20) | | | | |
| Operating Range | Cooling Operation Range | | 50 - 115°F (10 - 46°C) | | | | |
| | Cooling with Jumper | | 14 - 115°F (-10 - 46°C) | | | | |
| | Cooling with Air Direction Adjustment Grille | | -4 - 115°F (-20 - 46°C) | | | | |
| | Air Direction Adjust. Grille | | KPW937F4 | | KPW063B4 | | |
| | Heating Operation Range | | 5 - 65°F (-15 - 18°C) | | | | |
| | Drain Pan Heater | | KEH067A41E | | KEH063A4E | | |

| FVXS09NVJU | FVXS12NVJU | FVXS15NVJU | FDMQ12RVJU | FDMQ18RVJU | FDMQ24RVJU | FFQ09Q2VJU | FFQ12Q2VJU |
|----------------------------|-------------------------|-------------------------|---------------------------|-------------------------|-------------------------|-------------------------|-------------------------|
| RXL09QMVJU | RXL12QMVJU9 | RXL15QMVJUA | RXL12QMVJU9 | RXL18UMVJUA | RXL24UMVJUA | RX09RMVJU9 | RX12RMVJU9 |
| 9,000 (4,400 ~ 10,200) | 10,200 (4,400 ~ 12,300) | 15,000 (5,800 ~ 17,100) | 10,800 (6,500 - 13,200) | 17,600 (9,000 - 20,200) | 21,200 (9,000 - 24,000) | 9,100 (4,600 ~ 11,000) | 10,800 (4,600 ~ 14,000) |
| 10,100 (4,400 ~ 14,300) | 13,000 (4,400 ~ 17,100) | 18,300 (5,800 ~ 24,000) | 13,600 (6,300 - 17,000) | 21,600 (9,000 - 25,000) | 24,000 (9,000 - 27,600) | 10,000 (4,600 ~ 14,000) | 13,500 (4,600 ~ 17,100) |
| 20 | | | 18 | 19.4 | 18.6 | 20.9 | |
| 12.5 | 12 | 12.5 | 11.7 | 12.7 | 12.5 | 13 | |
| 11.7 | 11.4 | 11.3 | 10.8 | 10.3 | 10 | 11.7 | |
| 8849459 | 204717989 | 205663350 | 204717990 | 205663343 | 205663344 | 202682023 | 202682024 |
| 15 | | | | 20 | | | |
| 1/4 x 3/8 (6.4 x 9.5) | | 1/4 x 1/2 (6.4 x 12.7) | 1/4 x 3/8 (6.4 x 9.5) | 1/4 x 1/2 (6.4 x 12.7) | 1/4 x 5/8 (6.4 x 15.9) | 1/4 x 3/8 (6.4 x 9.5) | |
| 65.625 (20) | | 98.4 (30) | 65.625 (20) | 98.4 (30) | | 65.625 (20) | |
| 49.25 (15) | | 65.625 (20) | 49.25 (15) | 65.625 (20) | | 49.25 (15) | |
| 32.8 (10) | | | | | | | |
| 0.21 (20) | | | | 0.32 (30) | | | |
| 50 - 115°F (10 - 46°C) | | | | | | | |
| 5 - 115°F (-15 - 46°C) | | | | | | | |
| -4 - 115°F (-20 - 46°C) | | | | | | | |
| KPW937F4 | | KPW063B4 | KPW937F4 | KPW063B4 | | KPW937F4 | |
| -13 - 60°F (-25 - 15.5°C)* | | | -13 - 65°F (-25 - 18.3°C) | | | | |
| KEH067A41E | | KEH063A4E | KEH067A41E | KEH063A4E | | KEH067A41E | |

| QUATERNITY – Heat Pump | | | Multi-Zone Indoor Unit | Nominal Capacity | Dimensions (H x W x D) (in.) (mm) | Line Size (in.) (mm) | Weight (lb.) (kg) |
|---------------------------|-------------------------|-------------------------|-------------------------|-------------------------|--|------------------------|-------------------|
| FTXG09HVJU | FTXG12HVJU | FTXG15HVJU | | | | | |
| RXG09HVJU | RXG12HVJU | RXG15HVJU | FTXR_TVJU-W(S) | 9000/12000 | 11-15/16 x 39-5/16 x 8-3/8 (303 x 998 x 212) | 1/4 x 3/8 (6.4 x 9.5) | 27 (12) |
| | | | | 18000 | | 1/4 x 1/2 (6.4 x 12.7) | |
| 9,000 (5,300-12,300) | 12,000 (5,300-15,700) | 15,000 (5,300-18,000) | CTXS07LVJU | 7000 | 11-5/8 x 31-1/2 x 8-7/16 (295 x 800 x 215) | 1/4 x 3/8 (6.4 x 9.5) | 20 (9) |
| | | | FTXS_LVJU | 9000 | | 1/4 x 3/8 (6.4 x 9.5) | 22 (10) |
| | | | | 12000 | 1/4 x 3/8 (6.4 x 9.5) | | |
| 12,000 (4,400-18,000) | 16,000 (4,400-19,100) | 18,000 (4,400-21,200) | | 15000/18000 | 13-3/8 x 41-5/16 x 9-3/4 (340 x 1,050 x 248) | 1/4 x 1/2 (6.4 x 12.7) | 31 (14) |
| | | | 24000 | 1/4 x 5/8 (6.4 x 15.9) | | | |
| 26.1 | 24.2 | 21 | FVXS_NVJU | 9000/12000 | 23-5/8 x 27-9/16 x 8-1/4 (600 x 700 x 210) | 1/4 x 3/8 (6.4 x 9.5) | 31 (14) |
| | | | 15000/18000 | 1/4 x 1/2 (6.4 x 12.7) | | | |
| 15.8 | 14 | 12.9 | FDMQ_RVJU | 9000/12000 | 9-5/8 x 27-9/16 x 31-1/2 (245 x 700 x 800) | 1/4 x 3/8 (6.4 x 9.5) | 64 (29) |
| | | | | 15000 | 9-5/8 x 39-3/8 x 31-1/2 (245 x 1000 x 800) | 1/4 x 1/2 (6.4 x 12.7) | 77 (35) |
| 3208521 | 3208522 | 3208523 | | 18000 | | 1/4 x 5/8 (6.4 x 15.9) | 82 (37) |
| 15 | | | FDXS_LVJU | 9000/12000 | 7-7/8 x 27-9/16 x 24-7/16 (200 x 700 x 620) | 1/4 x 3/8 (6.4 x 9.5) | 47 (21) |
| 1/4 x 3/8 (6.4 x 9.5) | | | CDXS_LVJU | 7000 | | 1/4 x 3/8 (6.4 x 9.5) | |
| 32 (10) | | | | 15000/18000 | 7-7/8 x 35-7/16 x 24-7/16 (200 x 900 x 620) | 1/4 x 1/2 (6.4 x 12.7) | 60 (27) |
| 26 (8) | | | | 24000 | 7-7/8 x 43-5/16 x 24-7/16 (200 x 1100 x 620) | 1/4 x 5/8 (6.4 x 15.9) | 66 (30) |
| | | | FFQ_Q2VJU | 9000/12000 | 10-1/4 x 22-5/8 x 22-5/8 (260 x 575 x 575) | 1/4 x 3/8 (6.4 x 9.5) | 36 (16) |
| | | | | 15000 | | 1/4 x 1/2 (6.4 x 12.7) | 36 (16) |
| 14 - 109°F (-10 - 42.8°C) | | | | 18000 | | 40 (18) | |
| | | | | | | | |
| | | | | | | | |
| KPW937C4 | | | | | | | |
| -4 - 75°F (-20 - 24°C) | | | | | | | |
| KEH041A45 | | | | | | | |
| Port | 2MX*18 (Max: 24k BTU/h) | 3MX*24 (Max: 39k BTU/h) | 4MX*36 (Max: 48k BTU/h) | 5MXS48 (Max: 58k BTU/h) | | | |
| 1 | 07, 09, 12 | 07, 09, 12 | 07, 09, 12 | 07, 09, 12 | | | |
| 2 | 07, 09, 12, 15 | 07, 09, 12, 15, 18 | 07, 09, 12, 15, 18 | 07, 09, 12, 15, 18 | | | |
| 3 | - | 07, 09, 12, 15, 18 | 07, 09, 12, 15, 18 | 07, 09, 12, 15, 18 | | | |
| 4 | - | - | 07, 09, 12, 15, 18, 24 | 07, 09, 12, 15, 18, 24 | | | |
| 5 | - | - | - | 07, 09, 12, 15, 18, 24 | | | |

*24k BTU/h IDU connection only possible with optional 1/2" to 5/8" adaptor (4015875)

| VISTA – Heat Pump | | | Daikin EMURA – Heat Pump | | |
|-------------------------|-------------------------|-------------------------|--------------------------|-------------------------|-------------------------|
| 2Q2VJU | FFQ15Q2VJU | FFQ18Q2VJU | FTXR09TVJUW/S | FTXR12TVJUW/S | FTXR18TVJUW/S |
| RMVJU9 | RX15RMVJUA | RX18RMVJU9A | RX09RMVJU9 | RX12RMVJU9 | RX18RMVJU9A |
| 600 ~ 13,300 | 14,400 (5,100 ~ 16,200) | 17,400 (5,100 ~ 18,800) | 9,000 (4,500 ~ 10,600) | 12,000 (4,500 ~ 12,800) | 18,000 (5,100 ~ 18,500) |
| 600 ~ 16,800 | 16,200 (5,200 ~ 16,300) | 21,600 (5,400 ~ 21,800) | 10,000 (4,100 ~ 14,600) | 13,500 (4,100 ~ 15,800) | 20,000 (5,800 ~ 21,200) |
| 20.2 | 20.7 | 19.3 | 18 | 17 | 14.5 |
| 12.5 | | | 11 | | |
| 11.2 | 11 | 10.1 | 9.3 | 10 | 9.8 |
| 682024 | 205663346 | 205663362 | 202677939 / 203248011 | 202677940 / 203248015 | 205663363 / 205663364 |
| 15 | | | 15 | | |
| 1/4 x 1/2 (6.4 x 12.7) | | | 1/4 x 3/8 (6.4 x 9.5) | | |
| 98.4 (30) | | | 65.625 (20) | | |
| 65.625 (20) | | | 49.25 (15) | | |
| 32.8 (10) | | | 32.8 (10) | | |
| 0.21 (20) | | | 0.21 (20) | | |
| 50 - 115°F (10 - 46°C) | | | 50 - 115°F (10 - 46°C) | | |
| 14 - 115°F (-10 - 46°C) | | | 14 - 115°F (-10 - 46°C) | | |
| -4 - 115°F (-20 - 46°C) | | | -4 - 115°F (-20 - 46°C) | | |
| KPW063B4 | | | KPW937F4 | | |
| 5 - 65°F (-15 - 18°C) | | | 5 - 65°F (-15 - 18°C) | | |
| KEH063A4E | | | KEH067A41E | | |




| Outdoor Unit | 2-Port | | | | | | 3-Port | | | | | |
|------------------------------|--|-----------|-----------|---------------------------|-----------|-----------|--|-----------|-----------|---------------------------|-----------|-----------|
| | 2MXS18NMVJUA | | | 2MXL18QMVJUA | | | 3MXS24RMVJUA | | | 3MXL24RMVJUA | | |
| Installation Type | Non-Ducted | Ducted | Mixed | Non-Ducted | Ducted | Mixed | Non-Ducted | Ducted | Mixed | Non-Ducted | Ducted | Mixed |
| SEER | 18.9 | 14 | 16.45 | 17 | 14 | 15.5 | 18 | 14 | 15.95 | 18 | 14 | 15.95 |
| EER | 12.5 | 9.5 | 11 | 12.7 | 10.1 | 11.4 | 12.7 | 9.7 | 11.2 | 12.7 | 9.9 | 11.3 |
| HSPF | 10.7 | 8.2 | 9.45 | 10.3 | 8.2 | 9.25 | 12.5 | 8.2 | 10.35 | 12.5 | 8.2 | 10.35 |
| AHRI | 205663351 | 205663352 | 205663353 | 205663354 | 205663355 | 205663365 | 205663356 | 205663357 | 205663366 | 205663358 | 205663359 | 205663367 |
| Line Size & Qty. (in.) (mm) | 1/4 x 2, 3/8 x 1, 1/2 x 1 (6.4 x 2, 9.5 x 1, 12.7 x 1) | | | | | | 1/4 x 3, 3/8 x 1, 1/2 x 2 (6.4 x 3, 9.5 x 1, 12.7 x 2) | | | | | |
| Max Length (ft.) (m) | 164 (50) | | | | | | 229.6 (70) | | | | | |
| Max Height (ft.) (m) | 49.25 (15) | | | | | | 49.25 (15) | | | | | |
| Chargeless (ft.) (m) | 98.4 (30) | | | | | | 131.6 (40) | | | | | |
| Add'l Charge (oz/ ft) (g/m) | 0.21 (20) | | | | | | 0.21 (20) | | | | | |
| Operating Range Cooling | 14 - 115°F (-10 - 46°C) | | | | | | 14 - 115°F (-10 - 46°C) | | | | | |
| Operating Range Heating | 5 - 59.9°F (-15 - 15.5°C) | | | -13 - 60°F (-25 - 15.5°C) | | | 5 - 59.9°F (-15 - 15.5°C) | | | -13 - 60°F (-25 - 15.5°C) | | |
| Air Direction Adjust. Grille | KPW063B4 | | | | | | | | | | | |
| Drain Pan Heater | KEH063A4E | | | KEH063A4E | | | KEH063A4E | | | KEH063A4E | | |

LV Series – Heat Pump

| FTXS09LVJU | FTXS12LVJU | FTXS15LVJU | FTXS18LVJU | FTXS24LVJU | FDXS09LVJU | FDXS12LVJU |
|--------------------------|-------------------------|-------------------------|-------------------------|-------------------------|-------------------------|-------------------------|
| RXS09LVJU | RXS12LVJU | RXS15LVJU | RXS18LVJU | RXS24LVJU | RXS09LVJU | RXS12LVJU |
| 9,000 (4,400 ~ 9,000) | 12,000 (4,800 ~ 12,000) | 15,000 (5,800 ~ 15,000) | 18,000 (5,800 ~ 18,000) | 21,500 (7,800 ~ 21,500) | 8,500 (4,400 ~ 8,500) | 11,500 (4,800 ~ 11,500) |
| 12,000 (4,400 ~ 12,000) | 14,400 (4,800 ~ 14,400) | 18,000 (5,800 ~ 18,000) | 21,600 (5,800 ~ 21,600) | 25,400 (7,800 ~ 25,400) | 10,000 (4,400 ~ 10,000) | 11,500 (4,800 ~ 11,500) |
| 24.5 | 23 | 20.6 | 20.3 | 20 | 15.1 | 15.5 |
| 15.3 | 12.8 | 14.4 | 12.7 | 12.5 | 11.2 | 9.1 |
| 12.5 | | 11.6 | 11 | 10.6 | 10.3 | 10.4 |
| 5265753 | 5265755 | 5265756 | 5265757 | 5265758 | 5265777 | 5265840 |
| 15 | | 20 | | | 15 | |
| 1/4 x 3/8 (6.4 x 9.5) | | 1/4 x 1/2 (6.4 x 12.7) | | 1/4 x 5/8 (6.4 x 15.9) | 1/4 x 3/8 (6.4 x 9.5) | |
| 65.625 (20) | | 98.4 (30) | | | 65.625 (20) | |
| 49.25 (15) | | 65.625 (20) | | | 49.25 (15) | |
| 32.8 (10) | | | | | | |
| 0.21 (20) | | | | | | |
| 50 - 115°F (10 - 46°C) | | | | | | |
| 14 - 115°F (-10 - 46°C) | | | | | | |
| 0 - 115°F (-17.8 - 46°C) | | | | | | |
| KPW937C4 | | KPW945B4 | | | KPW937C4 | |
| 5 - 65°F (-15 - 18°C) | | | | | | |
| KEH041A41 | | KEH041A42 | | KEH041A43 | KEH041A41 | |

| 4-Port | | | | | | 5-Port | | | 8-Zone | |
|---|-----------|-----------|---------------------------|-----------|-----------|--|-----------|-----------|--------------------------------------|---------|
| 4MXS36RMVJUA | | | 4MXL36TVJU | | | 5MXS48TVJU | | | RMXS48LVJU | |
| Non-Ducted | Ducted | Mixed | Non-Ducted | Ducted | Mixed | Non-Ducted | Ducted | Mixed | Non-Ducted | Ducted |
| 17.7 | 14 | 15.85 | 21.7 | 16.9 | 19.3 | 20.2 | 15.3 | 17.75 | 18.8 | 14.1 |
| 9.2 | 7.9 | 8.55 | 12.5 | 11 | 11.75 | 10.5 | 8.6 | 9.55 | 10.3 | 9.3 |
| 12.2 | 8.2 | 10.2 | 11.2 | 9.1 | 10.15 | 11.1 | 8.6 | 9.85 | 11.3 | 9.6 |
| 205663360 | 205663361 | 205663368 | 202521824 | 202522139 | 202522140 | 202638701 | 202638702 | 202650862 | 5731240 | 5731241 |
| 1/4 x 4, 3/8 x 1, 1/2 x 2, 5/8 x 1 (6.4 x 4, 9.5 x 1, 12.7 x 2, 15.9 x 1) | | | | | | 1/4 x 5, 3/8 x 1, 1/2 x 2, 5/8 x 2 (6.4 x 5, 9.5 x 1, 12.7 x 2, 15.9 x 2) | | | 3/8 x 1, 3/4 x 1 (9.5 x 1, 19.1 x 1) | |
| 229.6 (70) | | | | | | 262 (80) | | | Refer to Engineering Data | |
| 49.25 (15) | | | | | | 49.25 (15) | | | Refer to Engineering Data | |
| 131.6 (40) | | | | | | 131.6 (40) | | | Refer to Engineering Data | |
| 0.21 (20) | | | | | | 0.21 (20) | | | Refer to Engineering Data | |
| 14 - 115°F (-10 - 46°C) | | | | | | 14 - 115°F (-10 - 60°C) | | | 14 - 115°F (-10 - 46°C) | |
| 5 - 59.9°F (-15 - 15.5°C) | | | -13 - 60°F (-25 - 15.5°C) | | | 5 - 59.9°F (-15 - 15.5°C) | | | 5 - 59.9°F (-15 - 15.5°C) | |
| | | | | | | KPW082A41 | | | - | |
| KEH063A4E | | | KEH082A41 | | | KEH082A41 | | | - | |

COMFORTABLE LIMITED WARRANTY* PROTECTION

| Single and Multi-Zone Systems† | | SkyAir†† |
|---|---|---|
| NV Series††, 17 Series, LV 30/36†† | 19 Series, Daikin <i>AURORA</i> , Daikin <i>EMURA</i> , LV Series, FDMQ, <i>QUATERNITY</i> , <i>VISTA</i> , RMXS/MXS Series | All products |
|  |  |  |

* Complete warranty details available from your local dealer or at www.daikincomfort.com. To receive the 10-Year or 12-Year Parts Limited Warranties, online registration must be completed within 60 days of installation. Online registration and some of the additional requirements are not required in California or Québec.

† If product installed in a commercial application, limited warranty period is 5 years.

†† Limited warranty, registration not required for residential and commercial installations.



AURORA
FTX_NMVJU
Wall Mount



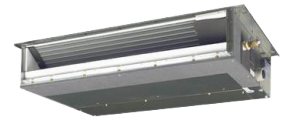
FTXS/CTXS
Wall Mount



17 Series
Wall Mount



SkyAir FCQ
Ceiling Cassette



FDXS/CDXS
Slim Duct



FTX(K)_NVJU
Wall Mount



QUATERNITY
Wall Mount



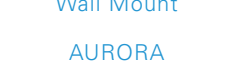
SkyAir FAQ
Wall Mount



19 Series
FTX(K)_AXVJU
Wall Mount



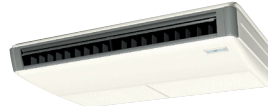
FFQ *VISTA*
Ceiling Cassette



AURORA
FTX_UVJU
Wall Mount



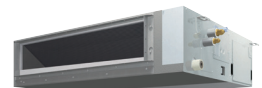
FTXR
Daikin *EMURA*
Wall Mount



SkyAir FHQ
Ceiling Suspended



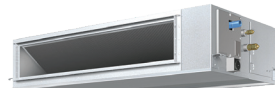
SkyAir FTQ
Air Handler



FDMQ
Ducted Concealed



FVXS
Floor Mounted



SkyAir FBQ
Slim Duct

ADDITIONAL INFORMATION

Before purchasing this appliance, read important information about its estimated annual energy consumption, yearly operating cost, or energy efficiency rating that is available from your retailer.



Our continuing commitment to quality products may mean a change in specifications without notice.

© 2021 **DAIKIN NORTH AMERICA LLC** · Houston, Texas · USA · www.daikincomfort.com or www.daikinac.com

PM-ZONE-NSELINE 03-21