

## Size Chart

**NOTE:** If your measurement falls between sizes, buy the larger size.

	<b>BUST</b>	<b>WAIST</b>	<b>HIP (SEAT)</b>
<b>X-SMALL</b> 0 - 2	33	27	36
<b>SMALL</b> 4 - 6	35	29	38
<b>MEDIUM</b> 8 - 10	37	31	40
<b>LARGE</b> 12 - 14	41	35	44
<b>X-LARGE</b> 16 - 18	45½	39¾	48¼
<b>2X</b> 20 - 22	50	44¾	52½
<b>3X</b> 24 - 26	55	49¾	57½

### Relaxed Fit:

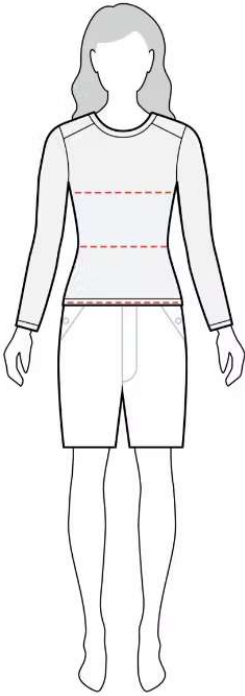
- Allows the most ease over body
- Subtle shape for maximum range of motion Original Fit

### Original Fit:

- Roomy for a comfortable fit
- Allows for maximum range of movement

## How to Measure

**Note:** For best results measure over your undergarments. Use a cloth measuring tape.

**Chest:**

Measure just under arms and across shoulder blades holding the tape firm and level. If your chest falls between sizes, order the next size up.

**Natural Waist:**

Bend side to side and find the natural bend in your body; this is your natural waist. **Note:** It may not be the smallest point.

**Hips:**

Measure the fullest part of your hips, approximately 8" below the natural waist.