

# CLASSIC JACKETS

## Size Chart

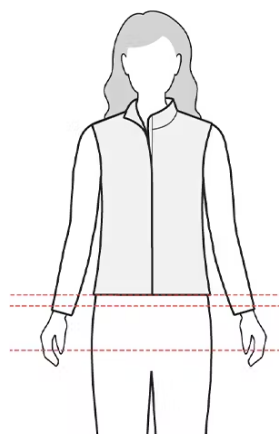
	BUST	WAIST	HIP (SEAT)
X-SMALL 0 - 2	33	27	36
SMALL 4 - 6	35	29	38
MEDIUM 8 - 10	37	31	40
LARGE 12 - 14	40	34	43
XL 16 - 18	43½	38	46½
2XL 20	47½	42½	50½
1X PLUS 16 - 18	44 - 46	38¾ - 40¾	46½ - 48½
2X PLUS 20 - 22	48 - 50	42¾ - 44¾	50½ - 52½
3X PLUS 24 - 26	52 - 54	46¾ - 48¾	54½ - 56½

Units are expressed in inches and reflect general body dimensions.  
Measurements are approximate.

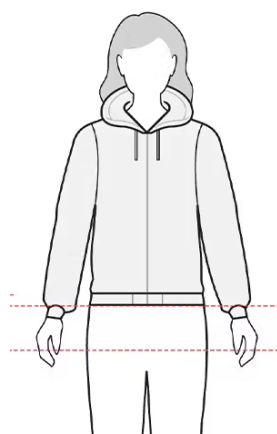
## Women’s Classic Jackets

- Length sits at hip or below hip
- Jacket center back length 25.5-29 inches
- If you prefer a slimmer fit or are between sizes, try sizing down.

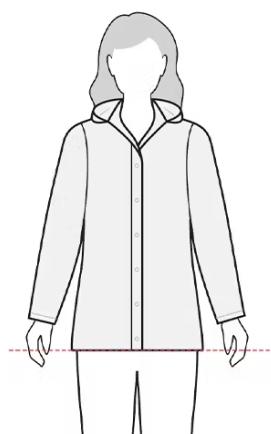
Use the illustration below to compare the lengths of our women's outerwear.



Vests  
24" - 26.5"



Jackets  
25.5" - 29"



PARKA  
33" - 36"

## How to Measure

**Note:** For best results measure over your undergarments. Use a cloth measuring tape.



### Bust:

Measure the fullest part of your bust, keeping the measuring tape parallel to the floor.

### Natural Waist:

Bend side to side and find the natural bend in your body; this is your natural waist. **Note:** It may not be the smallest point.

**Hips:**

Measure the fullest part of your hips, approximately 8" below the natural waist.