

## SIZE & FIT

### VEST JACKETS

#### Size Chart

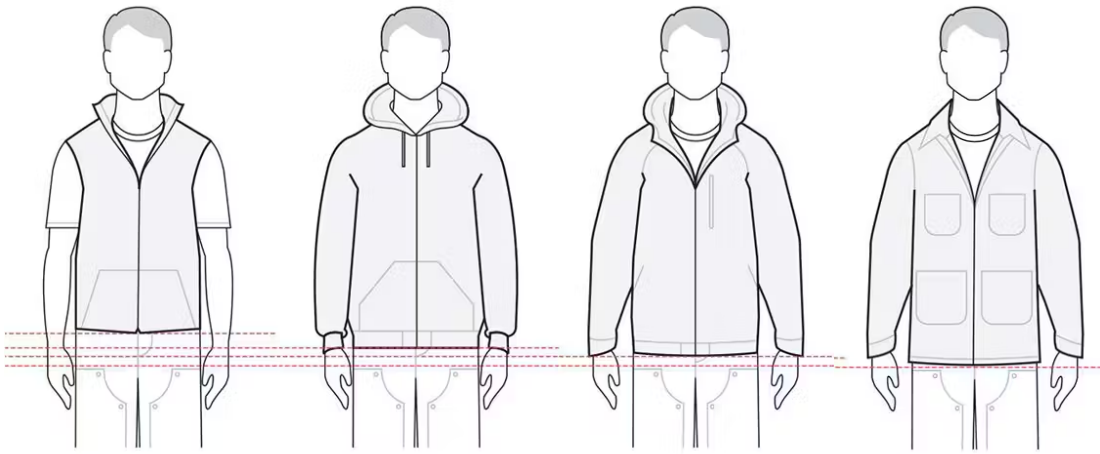
	CHEST	WAIST	HIP (SEAT)
SMALL	34 - 36	28 - 30	34 - 36
MEDIUM	38 - 40	32 - 34	38 - 40
LARGE	42 - 44	36 - 38	42 - 44
XL	46 - 48	40 - 42	46 - 48
2XL	50 - 52	44 - 46	50 - 52
3XL	54 - 56	48 - 50	54 - 56
4XL	58 - 60	52 - 54	58 - 60
5XL	62 - 64	56 - 58	62 - 64
6XL	66 - 68	60 - 62	66 - 68

Units are expressed in inches and reflect general body dimensions. Measurements are approximate.

#### Men's Vests

- Back Length: 26-29"
- Built to be worn over layers
- Designed to fall higher on the hip than a jacket

Use the illustration below to compare the lengths of our outerwear.



### **VESTS**

26" - 29"

### **JACKETS**

26" - 30"

### **PERFORMANCE FIT JACKETS**

27" - 30"

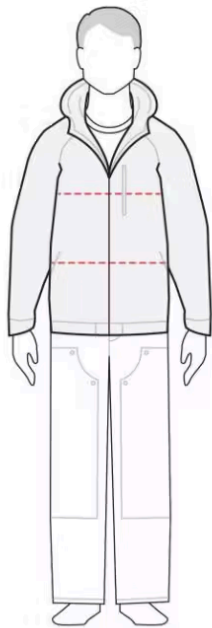
### **COATS & PARKAS**

30.5" - 36"

## **How to Measure**

**Note:** For best results measure over your undergarments.

Use a cloth measuring tape.



### **Chest:**

Measure just under arms and across shoulder blades holding the tape firm and level. If your chest falls between sizes, order the next size up.

### **Natural Waist:**

Bend side to side and find the natural bend in your body; this is your natural waist. **Note:** It may not be the smallest point.