

For Residential and Commercial Applications

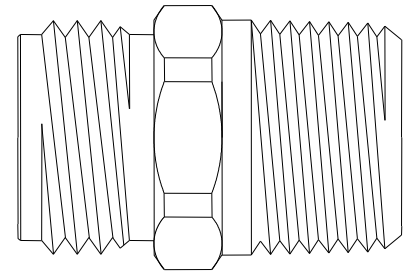
Job Name		Engineer / Architect	
Job Location		Wholesaler	
Submittal Date		Contractor	

HU22 Series Male Hose Thread x Male Iron Pipe Garden Hose Adaptor

Use: For use with residential and commercial grade garden hose. All female hose thread connections require a rubber washer (sold separately) inserted prior to installation.

Operating Specifications:

- Temperature:** -35° to 100°F
- Working Pressure:** 75 PSI maximum, intermittent to 150 psi



Standard

FITTING MATERIAL SPECIFICATIONS	
Body	Brass

Low-lead

FITTING MATERIAL SPECIFICATIONS	
Body	Low-lead brass

Standard Part Listing:

- HU22-8-12 3/4" male hose thread x 1/2" MIP, rough brass
- HU22-8-12 B 3/4" male hose thread x 1/2" MIP, rough brass, bulk
- HU22-8-12 C 3/4" male hose thread x 1/2" MIP, chrome plated
- HU22-12-12 3/4" male hose thread x 3/4" MIP, rough brass
- HU22-12-12 B 3/4" male hose thread x 3/4" MIP, rough brass, bulk
- HU22-12-12TP 3/4" male hose thread x 3/4" MIP, (tapped 1/2" FIP), rough brass
- HU22-12-12TP B 3/4" male hose thread x 3/4" MIP, (tapped 1/2" FIP), rough brass, bulk
- HU22-12MH 3/4" male hose thread x 3/4" male hose thread (tapped 1/2" FIP), rough brass
- HU22-12MH B 3/4" male hose thread x 3/4" male hose thread (tapped 1/2" FIP), rough brass, bulk
- HU22-8-12E 3/4" male hose thread x 1/2" MIP (tapped 1/2" Nom. Sweat), rough brass
- HU22-8-12E B 3/4" male hose thread x 1/2" MIP (tapped 1/2" Nom. Sweat), rough brass, bulk

Low-lead Part Listing:

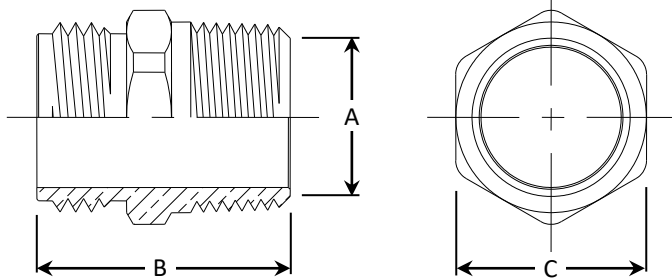
- HU22-8-12X 3/4" male hose thread x 1/2" MIP, rough brass
- HU22-8-12X B 3/4" male hose thread x 1/2" MIP, rough brass, bulk
- HU22-12-12X 3/4" male hose thread x 3/4" MIP, rough brass
- HU22-12-12X B 3/4" male hose thread x 3/4" MIP, rough brass, bulk

This specification and all information contained herein is the confidential and exclusive property of Brasscraft Manufacturing Company and shall not be disclosed to others without the written consent of Brasscraft Mfg. Co. This specification must be returned to Brasscraft Mfg. Co. if requested.

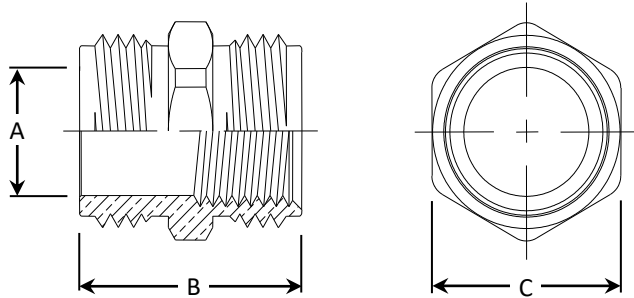


HU22 Series Male Hose Thread x Male Iron Pipe Garden Hose Adaptor

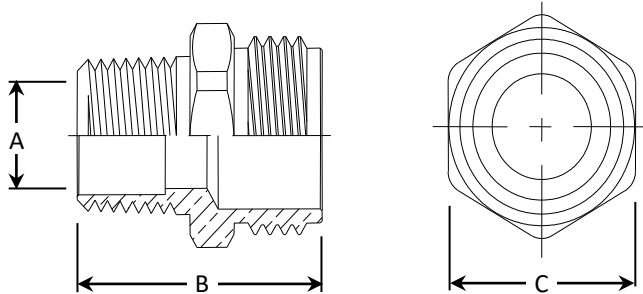
HU22-8-12 & HU22-12-12 - Male Hose Thread x MIP



HU22-12MH - Male Hose Thread x Male Hose Thread (tapped FIP)



HU22-8-12E - Male Hose Thread (tapped Sweat) x MIP



PART DIMENSIONS (Inches)			
Model	DIA. A	DIM. B	HEX C
HU22-8-12	.561	1.29	1-1/16
HU22-12-12	.78	1.41	1-1/8

PART DIMENSIONS (Inches)			
Model	DIA. A	DIM. B	HEX C
HU22-12MH	.703	1.25	1-1/16
HU22-8-12E	.562	1.39	1-1/16

This specification and all information contained herein is the confidential and exclusive property of Brasscraft Manufacturing Company and shall not be disclosed to others without the written consent of Brasscraft Mfg. Co. This specification must be returned to Brasscraft Mfg. Co. if requested.

BrassCraft®