

PRODUCT CATALOG

BIG FOOT TOOLS



702-565-9954 | info@bigfoottools.com | www.BigFootTools.com



About Us



Big Foot Tools is not your average, everyday tool manufacturing company, and neither is the man who envisioned the company and these—quite literally—cutting edge tools.

Robert Hutchings worked as a framer and carpenter for nearly three decades, and it was because of these years of on-the-job work experience that he determined by adding a larger blade on his 7-1/4" SKILSAW®, he could cut 4 x 4s in one pass instead of two.

While we are proud to offer unique, durable tools at affordable prices, we at Big Foot Tools consider every Big Foot product, a work in progress. That is why we are constantly looking to find ways to make tools tougher, stronger and lighter.

At its heart, though, Big Foot Tools remains a down-home company started and run by people who know the carpentry industry, because we have worked in the industry. We, too, once made our living as carpenters and framers, and our unique tool designs reflect the most efficient, stable, durable, and safe designs anywhere. After all, WE wouldn't take any less quality tools to our own job sites.

Certainly, we think of ourselves as the kind of old fashioned quality tool maker that you just don't find in the big box stores, and for us, that's not a bad thing. Outstanding customer service and unbeatable quality tools have always been our top priority—and they always will be.



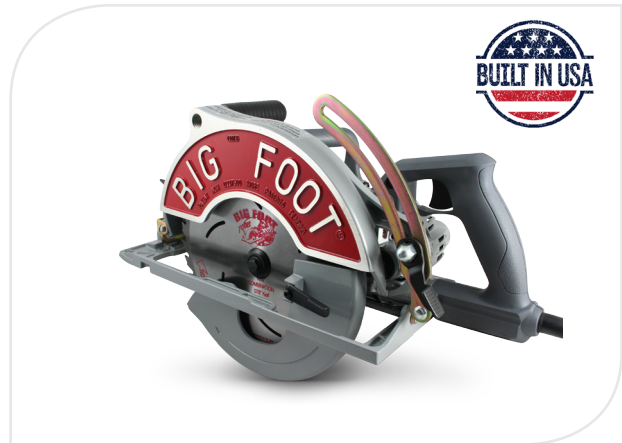
Table of Content

04	SAWS
07	ADAPTER KITS
09	SAW BLADES
11	SAW ACCESSORIES
14	HEAD CUTTERS
16	PEA SHOOTERS
18	LAYOUT TOOLS
22	PARTS



BIG FOOT 10-1/4" SAW

The one that put Big Foot Tools on the map! The Big Foot 10-1/4" Worm Drive Beam Saw was designed by a professional tradesman with 27 years of practical, on-the-job, carpentry, framing and remodeling experience. While the Big Foot Saw was originally designed for cutting 2 plates in one pass, we quickly found it could also cut any 4x materials in one pass, just as easily.



Part # SC-1025SU

Big Foot 10-1/4" Saw w/Skil® SPT77w 15amp Motor
U-Ground Cord

UPC: 637827125175
WEIGHT: 22 LBS BOXED

Part # SC-1025ST

Big Foot 10-1/4" Saw w/Skil® SPT77w
15amp Motor Twist Lock Cord

UPC: 637827012574
WEIGHT: 22 LBS boxed

✓	The Big Foot Saw will cut your 4x headers, double 2x sandwich headers, exposed beams for decks, porches, 4x4 fence posts and 7 sheets plus of 1/2" Plywood with one pass.	✓	When cutting at a 90 degree angle with the Big Foot 10-1/4" Worm Drive Beam Saw the depth of cut is 3-7/8". When cutting at a 45 degree angle with the Big Foot 10-1/4" Worm Drive Beam Saw the depth of cut is 2-3/4"
✓	We are recognized in the industry as the original maker of a 10-1/4" worm drive machine and our many loyal customers will not accept imitations of the original Big Foot product. We're made for framers by a framer and have a balanced machine that feels good in your hands and comfortable during long projects.	✓	We have, without question, the best blade on the market for 10-1/4" machines. We've struck the perfect balance between a thin kerf and the ability to make a perfectly straight, controlled cut without going off-line due to blade flex.
✓	Our blades are rugged enough to take on the toughest job-site conditions.	✓	All of the above means that your projects will be done sooner and easier, without sacrificing quality!
✓	We hand-build each Big Foot Saw Here in the USA. Each one is assembled in Henderson, NV. Prior to going on a SKILSAW® worm drive motor, we tap the threads, pop the rivets, machine the faces, drill the holes and hand check each finished saw to ensure it's nothing less than what we would want to use in the field ourselves.	✓	And if this incredible saw isn't enough of a deal, we send you a free Big Foot T-shirt when you return your warranty card! The 10-1/4" Big Foot Saw comes standard with a U-Ground cord but is also available with a Twist lock.



ADAPTER KITS



10-1/4" Beam Saw Adapter Kit

Big Foot Tools is especially proud of our 10-1/4" SKILSAW® Adapter Kit, which was our monumental first product and got it all started for Big Foot Tools. It's easy to see why the Big Foot 10-1/4" SKILSAW® Adapter Kit—originally created for the Skil® and Craftsman® worm-drive saws—were such a hit. The Big Foot 10-1/4" SKILSAW® Adapter Kits still come with complete installation instructions and take less than 15 minutes to install on to your 7-1/4" SKILSAW®. With a newly added short depth slide and 10-1/4" carbide blade, this kit is a must!



Part # SK-1025KIT-1

STYLE 1 FITS:

Skil® 7 1/4"HD77-HD77M-SHD77-SHD77M- 1677M

UPC: 637827425503

WEIGHT: 8 LBS boxed

Part # SK-1025KIT-2

STYLE 2 FITS:

Skil® 7 1/4"-SPT77w & SHD77-02

UPC: 637827425510

WEIGHT: 8 LBS boxed

✓	The Original Big Foot 10-1/4" SKILSAW® Style 1 Adapter Kit fits SKILSAW® Type 17, Bosch® 1677M & Mag® Type 1 machines.	✓	The New Big Foot 10-1/4" SKILSAW® Style 2 Adapter Kit fits SKILSAW® SPT77w and SHD77-02 machines.
✓	The Big Foot 10-1/4" SKILSAW® Adapter Kit comes with a 10-1/4" thin kerf blade made especially for your new Big Foot 10-1/4" Worm Drive Beam Saw. It's the best blade on the market for 10-1/4" saws.	✓	The Big Foot Saw Adapter is the lightest (and only) kit available for making your saw into a 10-1/4" machine. The Big Foot Saw Adapter placed on the SKILSAW® Motor is 1-1/2 lbs lighter than other OEM saws.
✓	When cutting at a 90 degree angle with the Big Foot 10-1/4" Worm Drive Beam Saw the depth of cut is 3-7/8"	✓	When cutting at a 45 degree angle with the Big Foot 10-1/4" Worm Drive Beam Saw the depth of cut is 2-3/4"
✓	We even send you a free Big Foot T-shirt when you return your warranty card!	✓	We offer two kits for 7-1/4" SKILSAW® both new and old : The Original Big Foot 10-1/4" SKILSAW® Style 1 Adapter Kit fits SKILSAW® Type 17, Bosch® 1677M & Mag® Type 1 machines.
✓	The New Big Foot 10-1/4" SKILSAW® Style 2 Adapter Kit fits SKILSAW® SPT77w and SHD77-02 machines.	✓	Installation couldn't be easier and we offer videos on our website showing step by step how to build your own Big Foot Saw!



SAW BLADES



World's Best 10-1/4" Blades

10-1/4" X 36 TOOTH SAW BLADE			
PART #	DESCRIPTION	UPC	WEIGHT
BL-102536T	10 1/4" .078" Kerf. 36 Tooth Carbide With 5/8" Arbor Diamond knockout	37827512258	1.5 LBS



10-1/4" X 24 TOOTH SAW BLADE			
PART #	DESCRIPTION	UPC	WEIGHT
BL-102524T	10 1/4" .078" Kerf. 24 Tooth Carbide With 5/8" Arbor Diamond Knockout	637827701058	1.5 LBS



Super Thin Kerf 14" Blades

14" X 48 TOOTH SAW BLADE			
PART #	DESCRIPTION	UPC	WEIGHT
BL-1448T	Big Boy 14" .090" Kerf. 48 Tooth Carbide Blade With 1" Arbor Round	637827506172	4 LBS



14" X 60 TOOTH SAW BLADE			
PART #	DESCRIPTION	UPC	WEIGHT
BL-1460T	Big Boy 14" .090" Kerf. 60 Tooth Carbide Blade With 1" Arbor Round	637827512357	4 LBS





SAW ACCESSORIES



75° Swing Table

The Big Foot 75° Swing Table is custom-made in our shop for the Big Foot 10-1/4" Saw and allows you to cut full bearing rafters, beams, glu-lams, micro-lams and more.

The Big Foot Swing Table is the only table for cutting the full bearing material needed for your 2x4 wall beams or your 2x6 wall beams, and is very easy and safe to use.

FEATURES OF THE 75 DEGREE SWING TABLE INCLUDE:

- Thumb lever assembly
- Easy installation in two minutes or less

The quadrant is marked from 0 to 75° so there is no guessing what degree you are on.

The Big Foot Swing Table fits only Big Foot Saws.

You can buy the Big Foot Swing Table separately or buy the Big Foot Saw with the Swing Table already attached.

- Depth of cut at 90 degrees: 3 7/8"
- Depth of cut at 45 degrees: 3"
- Depth of cut at 75 degrees: 1-7/8"
- Depth of cut at 60 degrees: 2"



Part # SA-1025ST

75° Swing Table:

75° Swing Table For the 10 1/4" Big Foot Beam Saws

UPC: 63782771578

WEIGHT: 4 LBS BOXED

Part # SA-725ST

75° Swing Table:

75° Swing Table fits 7 1/4" & 8 1/4" Skil® motor Also fits Bosch® 7 1/4"

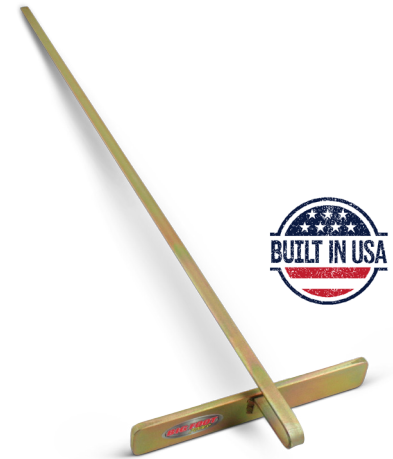
UPC: 637827704059

WEIGHT: 4 LBS BOXED



Rip Guide

RIP GUIDE			
PART #	DESCRIPTION	UPC	WEIGHT
SA-RG	The Big Foot Rip Guide is the only rip guide made to fit most saws. It allows you to a rip up to 24".	637827030370	3 LBS boxed



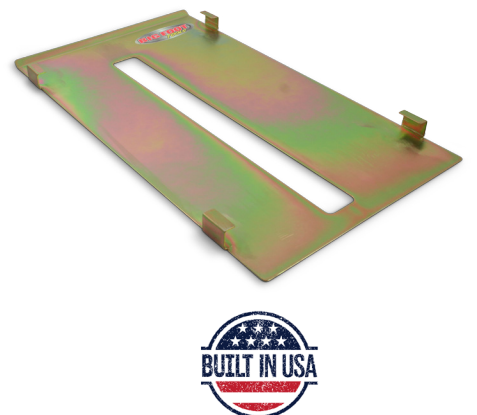
Big Foot Universal Handle

BIG FOOT UNIVERSAL HANDLE			
PART #	DESCRIPTION	UPC	WEIGHT
P-BFSH	Big Foot Universal Handle Fits: Big Foot 10 1/4" Adapter	637827012574	1 LBS



Big Boy Slip Plate

BIG BOY SLIP PLATE			
PART #	DESCRIPTION	UPC	WEIGHT
SA-14SP	Big Boy Slip Plate Fits: 14" Beam Saw Only!	637827506189	4 LBS boxed



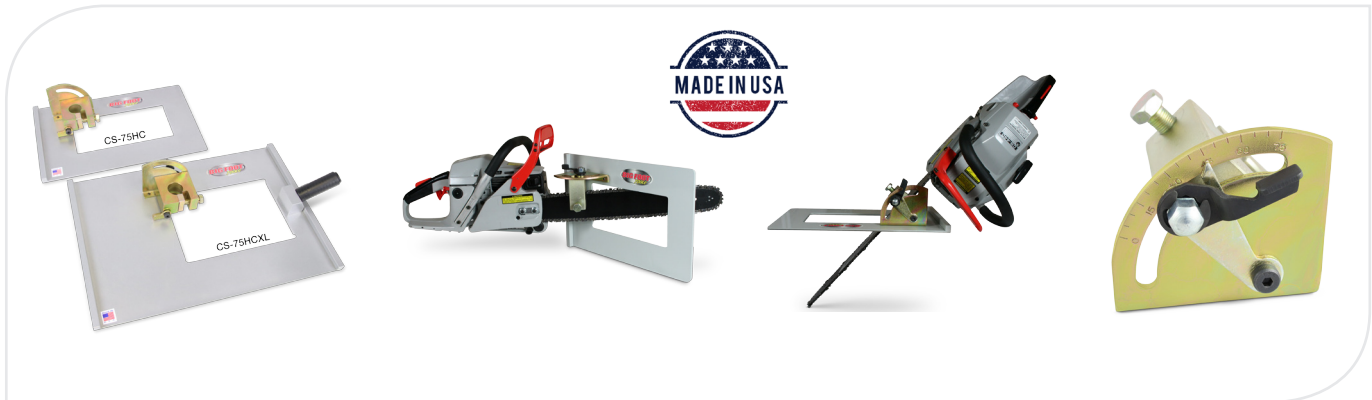


HEAD CUTTER



75° Head Cutter

Big Foot 75° Degree Head Cutter, performs beyond the reach of all common portable circular saw tools, and it is the framer's dream! Its unique, patented design allows it to clamp to any chainsaw (14"-44"bar) in seconds to become a giant precision cutting tool.



Part # CS-75HC

Big Foot 75° Head Cutter Chainsaw Attachment

UPC: 637827608883

WEIGHT: 9 LBS BOXED

Part # CS-75HCXL

Big Foot 75° Head Cutter XL Chainsaw Attachment

UPC: 637827608890

WEIGHT: 14 LBS BOXED

FEATURES OF THE BIG FOOT 75° DEGREE HEAD CUTTER INCLUDE:

- Laterally angularly adjustable from vertical through 75°
- 10 x 16" base plate for superior stability and precise freehand cutting
- Designed for easy guiding—following a snap-line or scribed arc is effortless
- Easy clean up—chain cutter throws wood chips away from your work area
- Designed for safety and precision—the Big Foot Head Cutter gives you an unobstructed view of the cutting chain

The Big Foot Head Cutter really is a multi-purpose tool that can be used for cutting, Glue-lams, Mirc-lams, TJI's, landscaping lumber, fence posts, large structural panels and more!

The Big Foot Head Cutter is the ultimate tool for log home builders; it makes the difficult cuts easy and they're done with accuracy and speed.

FEATURES OF THE BIG FOOT 75° DEGREE HEAD CUTTER XL INCLUDE:

- 14 x 20" base plate for superior stability and precise freehand cutting
- Will accommodate chainsaw bars 2" - 6" wide
- Has a built in handle for better control and support



PEA SHOOTERS



STANDARD PEA SHOOTERS

Part # PT-PS24

24" Pea Shooter	UPC: 37827513019 WEIGHT: 3 LBS
-----------------	---

Part # PT-PS36

36" Pea Shooter	UPC: 637827512890 WEIGHT: 4 LBS
-----------------	--

The Big Foot Pea Shooter is a must for any carpenter doing pick-up work on any frame job, either custom or production framing. The Big Foot Pea Shooter is capable of accessing difficult, narrow, tight spaces that are unreachable by a hammer or too high up to reach normally from the ground without a ladder.

Thus, the Big Foot Pea Shooter eliminates the time-consuming and energy-sapping need to drag a ladder around the job site to address protruding nail heads. We all know that non-flush nail heads with framing will leave bumps in your sheet rock, a poor reflection on your work.

The Big Foot Pea Shooter is the fastest way to knock nail heads down flush: just slip the end of the Big Foot Pea Shooter over the nail head and slam the slide hammer until the head is flush.

Available in 24" and 36" sizes.

The Big Foot Pea Shooter has a soft grip handle for easy handling, zinc coating to prevent rust, and rounded tip to prevent mushrooming.



MAGNETIC PEA SHOOTERS

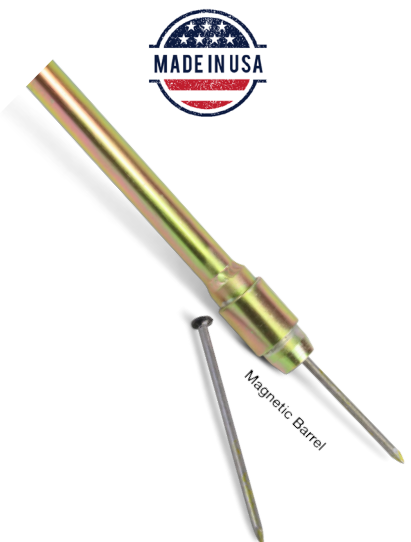
Part # PT-PS24M

24" Pea Shooter	UPC: 637827513026 WEIGHT: 3 LBS
-----------------	--

Part # PT-PS36M

36" Pea Shooter	UPC: 637827513033 WEIGHT: 4 LBS
-----------------	--

The Big Foot Magnetic Tip Pea Shooters are designed so that you can not only finish driving nails in hard to reach places, but also completely drive a nail from start to finish. The magnetic barrel holds the nail in the tip of the tool allowing anyone to nail overhead, straight down or sideways, and reach anywhere you wouldn't be able to swing a traditional hammer. The Pea Shooters are compatible with nail sizes 3D to 30D, gauge 14 to 5, with nail head size 13/64" to 7/16".





LAYOUT TOOLS

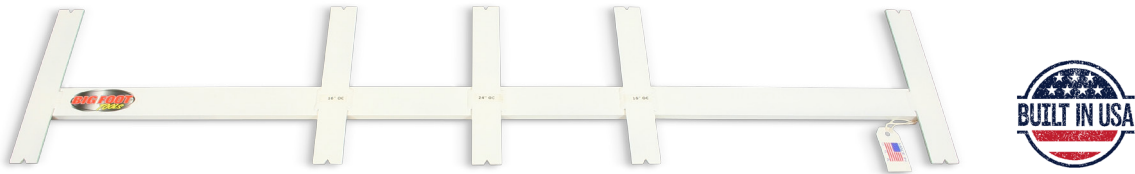


Folding Layout Stick



Folding Layout Stick			
PART #	DESCRIPTION	UPC	WEIGHT
LA-LSF	12", 16" & 24" On Center	637827710050	4 LBS

Welded Layout Stick



Welded Layout Stick			
PART #	DESCRIPTION	UPC	WEIGHT
LA-LSW	16" & 24" On Center	637827351765	4 LBS

Big Foot Tools Layout Sticks are a must for framers doing layout work, stud placement and marking on the job site. The layout sticks take out as much human error as possible in the stud layout process and allows users to do high production level layout quickly and easily.

The Big Foot Layout Sticks are simple to use to mark the center or edges of your stud when doing framing layout. Just place one end of the layout stick at the end of the wall and you can rapidly start marking stud locations either 16 or 24 inch on center on the welded and folding versions or even 12 inch on center with the folding version. When you finish marking the studs, move the Layout Stick down to where you made your last marks and place the layout stick arm on the marks and continue marking. The easy to use arm design allows you to mark both sides of the arm, or just the center depending what you need to do.

The welded aluminum layout stick is 49-1/2 inches long and each arm is 1-1/2 inch wide with a center market on each one. The Layout Stick is made of 6061 aluminum that is expertly welded to ensure the perfect mark every time allowing you to do precision layout at lightning speed.

The folding layout stick offers all the same speed and convenience of the fixed welded version with just a few more features. The folding layout stick allows users to also mark 12 inches on center and when not in use, the arms fold neatly away for storage. You no longer have to worry about the arms getting tangled up in your cords or damaged by other tools, and it can even fit behind your seat in the truck. The folding Layout Stick is made of 6061 aluminum and poly-carbonate arms making it light weight and durable.



Bolt Hole Marker Hand Held

BOLT HOLE MARKER HAND HELD			
PART #	DESCRIPTION	UPC	WEIGHT
LA-BMHMH	Bolt Hole Marker Hand Held	637827067505	3 LBS



Bolt Hole Marker Stand Up

BOLT HOLE MARKER STAND UP			
PART #	DESCRIPTION	UPC	WEIGHT
LA-BHMSU	Bolt Hole Marker Stand Up	637827067307	5 LBS

Big Foot Tools has done it again with our Patented, Universal Bolt Hole Marker that lets you mark the top five most common bolts with just one tool. Big Foot's Universal Bolt Hole Marker eliminates speed square bolt marking and helps framers work faster and more accurately.

Every mark really is perfect—no more missing measurements by that frustrating 1/4". It is so accurate you can drill holes 1/16" over size, leading to nicer fitting and cleaner jobs. You'll be amazed at how much this one little tool can do for your biggest framing jobs!

Big Foot Tools has 2 styles of Bolt Hole Markers: stand-up and hand held.

The Big Foot Bolt Hole Marker is Made in the USA.

- Easy Five different marks: 1/2", 5/8", 3/4", 1", and 1 1/4"
- Ball bearing lock keeps the indicator in place
- Marks 2x4 or 2x6 plates

Our Stand Up Bolt Hole markers has all the same features of the hand held universal bolt hole marker but lets you work standing up. Just hit the top of the handle with your hammer and the mark is put in the right place all the while saving your back and knees!



Big Foot Channel Marker

BIG FOOT CHANNEL MARKER			
PART #	DESCRIPTION	UPC	WEIGHT
LA-CM	The Big Foot Channel Marker is a must for any carpenter doing any kind of layout. Great for layouts of walls, both interior and exterior, joining walls and corners. Made out of aircraft aluminum and powder-coated.	637827067307	5 LBS





Flush Drive

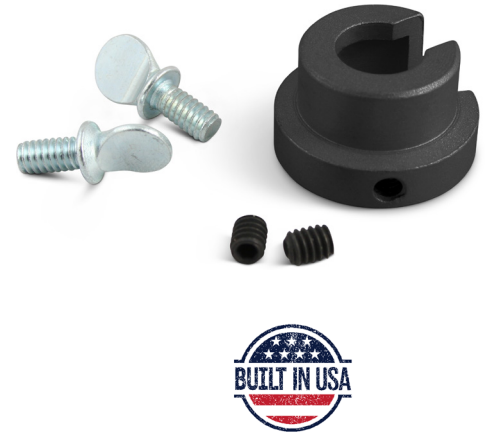
FLUSH DRIVE NAIL GUN ACCESSORY

PART #	UPC	WEIGHT
ACC-FD	637827141885	0.25 LBS

This aluminum flush nailer is a high quality adjustable flush nailer. It can be attached to the nose of the nailer either by set screws (includes allen wrench) or thumb wing nuts. The Flush Drive is "C" shaped to ensure added protection for the operator of the nail gun. The "C" shaped design allows the nail to pass through the nail gun properly without the flush drive interfering. The Flush Drive prevents nails from being over driven with the nail head below the material surface which can greatly reduce the holding strength of the fastener and lead to premature failures of the mechanical holding of the nail.

COMPATIBLE WITH:

- Hitachi NR83A 3-1/4" Full Head Nailer
- Hitachi NR83A2 Full Head Framing Nailer
- Hitachi NR83A2(S) Framing Nailer
- Porter Cable FR350A Round Head Framing Nailer
- SUPCO SFN-88 Framing Nailer



Keel Holder

KEEL HOLDER W/CRAYONS & PENCIL

PART #	DESCRIPTION	UPC	WEIGHT
LA-KWCP	Big Foot Keel Holder	637827125717	0.5 LB



KEEL HOLDER W/CRAYONS & PENCIL

PART #	DESCRIPTION	UPC	WEIGHT
LA-KWCPC	Big Foot Keel Holder with Carry Case	637827120750	0.5 LB

The Big Foot Keel Holder is like no other one on the market. It carries 2 crayons and 1 carpenter's pencil and fits in your nail bag side pocket or in its own carrying case. The Big Foot Keel Holder is great for doing layout because you have the pencil to mark on the plates, and 2 crayons for your marks on the slab, floor and plates. The Big Foot Keel Holder can be used with one color to make marks for your high walls, short walls, headers, door openings, window sizes and openings and the other color for notations.





PARTS



OEM Big Foot Parts

BIG FOOT UPPER GUARD

PART #	DESCRIPTION	UPC	WEIGHT
P-1025UGM-2	Big Foot Upper Guard Magnesium Cast New Style	637827610800	2 LBS Boxed

Saws prior to 2014 use Part # P-1025UGM-1



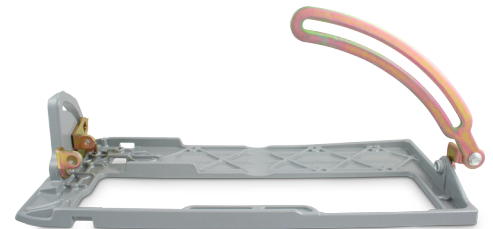
BIG FOOT LOWER GUARD

PART #	DESCRIPTION	UPC	WEIGHT
P-1025LGM-2	Big Foot Lower Guard Magnesium Cast New Style	637827303764	1 LBS Boxed



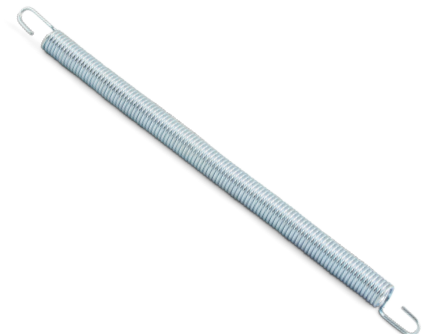
BF FOOT PLATE

PART #	DESCRIPTION	UPC	WEIGHT
P-1025FCM-2	BF Foot Plate Magnesium Cast New Style	637827122846	2 LBS Boxed



BIG FOOT RETURN SPRING

PART #	DESCRIPTION	UPC	WEIGHT
P-BFRS	Big Foot Return Spring For: Big Foot 10-1/4" Lower Guard	637827512128	1 LBS Boxed





BIG BOY 14" RETURN SPRING			
PART #	DESCRIPTION	UPC	WEIGHT
P-BBRS	Big Boy 14" Return Spring	637827303764	LBS Boxed

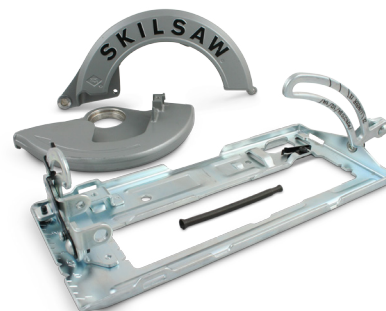


BIG FOOT HARDWARE REPLACEMENT			
PART #	DESCRIPTION	UPC	WEIGHT
OEM-ALS	Big Foot Hardware Replacement Packet. Fits: BF 10 1/4" Saws and 7-1/4" Skil® Saws	637827506103	1 LBS Boxed



OEM SKILSAW® Parts

OEM SKILSAW® PARTS			
PART #	DESCRIPTION	UPC	WEIGHT
OEM-SRPNEW	Skil® Parts Fits: SPT77w 7 1/4" worm drive saw, With: Upper Guard, Lower Guard, Foot, Return Spring	637827512678	4 LBS Boxed



OEM SKILSAW® PARTS			
PART #	DESCRIPTION	UPC	WEIGHT
OEM725BL	Skil 7-1/4" x 24 tooth lades	-	1 LBS Boxed





Mailing Address:
PO Box 91223
Henderson NV 89009

Phone: 702-565-9954
Fax: 702-579-9046
Toll Free: 888-798-4499
Email: info@bigfoottools.com

