

Domestic[®] Pump Series B35

REPLACEMENT PARTS FOR
2 ft. NPSH Centrifugal Pumps
Styles PF and PVF and HB-35

Index

How To Use This Parts List	3
A Word About Obsolete Pumps	4
Typical Assembly for 1/3 HP thru 3 HP Pumps	5
Typical Assembly for 5 HP thru 15 HP Pumps	6
Typical Assembly for Horizontal B-35 Pumps	7
613B	8
613HB	8
614B	8
614HB	8
616B	8
617B	8
618B	9
618HB	9
620B	9
620HB	9
625B	10
625HB	10
626B	10
627B	10
Footed Suction Flange Pump Components	11
Replacement Motor Selection Table.	12

How to use this PARTS LIST

The unit nameplate identifies the pump by its pump combination number. Specific pump information is determined by identifying both the pump combination and the motor horsepower which is noted on the motor nameplate.

DOMESTIC® PUMP			
SERIES CB ™			
MODEL 23 CB 9-20			
SERIAL XXXXXX-XXXXXX			
GPM 9	PSI 20	PUMP 616B	
POWER V. 460	PH. 3	HZ 60	
CONTROL V. 115	PH. 1	HZ 60	
TOTAL F.L. AMP.	LARGEST MOTOR F.L. AMP.		
Bell & Gossett			

DOMESTIC® PUMP			
SERIES 616B ™		GPM 9	
SERIAL XXXXXX		PSI 20	
Bell & Gossett			

The nameplates identify the pump in the examples as a 616B (Domestic Series B-35) rated for 9 GPM at 20 PSI. The larger nameplate notes that this pump has been furnished on a Series CB Condensate unit, Model Number 23 CB 9-20. The smaller nameplate identifies a pump that has been furnished separately.

The following procedure will result in proper parts selection:

1. Determine from the nameplate the pump combination and its capacity.
2. Refer to the motor nameplate to determine the correct motor horsepower.
3. Refer to the index to identify the appropriate page for parts selection.
4. For pumps that are available in multiple horsepower find the correct column on the pump combination page.
5. Using the referenced drawing for the pump, select the appropriate parts.
6. When ordering impellers, be sure to specify the required diameter on the order. If a diameter is not specified, a full size impeller will be furnished. (*Caution: Trimmed impellers may not be returned to the factory for credit.*) For impeller trims consult the appropriate full unit parts list.

A Word About Obsolete Pumps

During the time that Domestic & Hoffman Pump Products have been offered, a number of design changes have occurred that necessitate the obsoleting of certain pump combinations. The following list attempts to address the more frequently requested pump identifications.

612 PF-B pumps were discontinued in 1984. The 616 PF-B is a direct replacement. Parts from the current 616 PF-B pump are dimensionally interchangeable with the 612 PF-B parts.

613 PF-B pumps in 2 and 3 HP were discontinued in 1984. At this printing, limited parts may still be obtained. Consult the factory or your representative for availability.

614 PF-B pumps in 3 HP and 10 HP were discontinued in 1984. At this printing, limited parts may still be obtained. Consult the factory or your representative for availability.

614 HB pumps in 10 HP were discontinued in 1984. At this printing, limited parts may still be obtained. Consult the factory or your representative for availability.

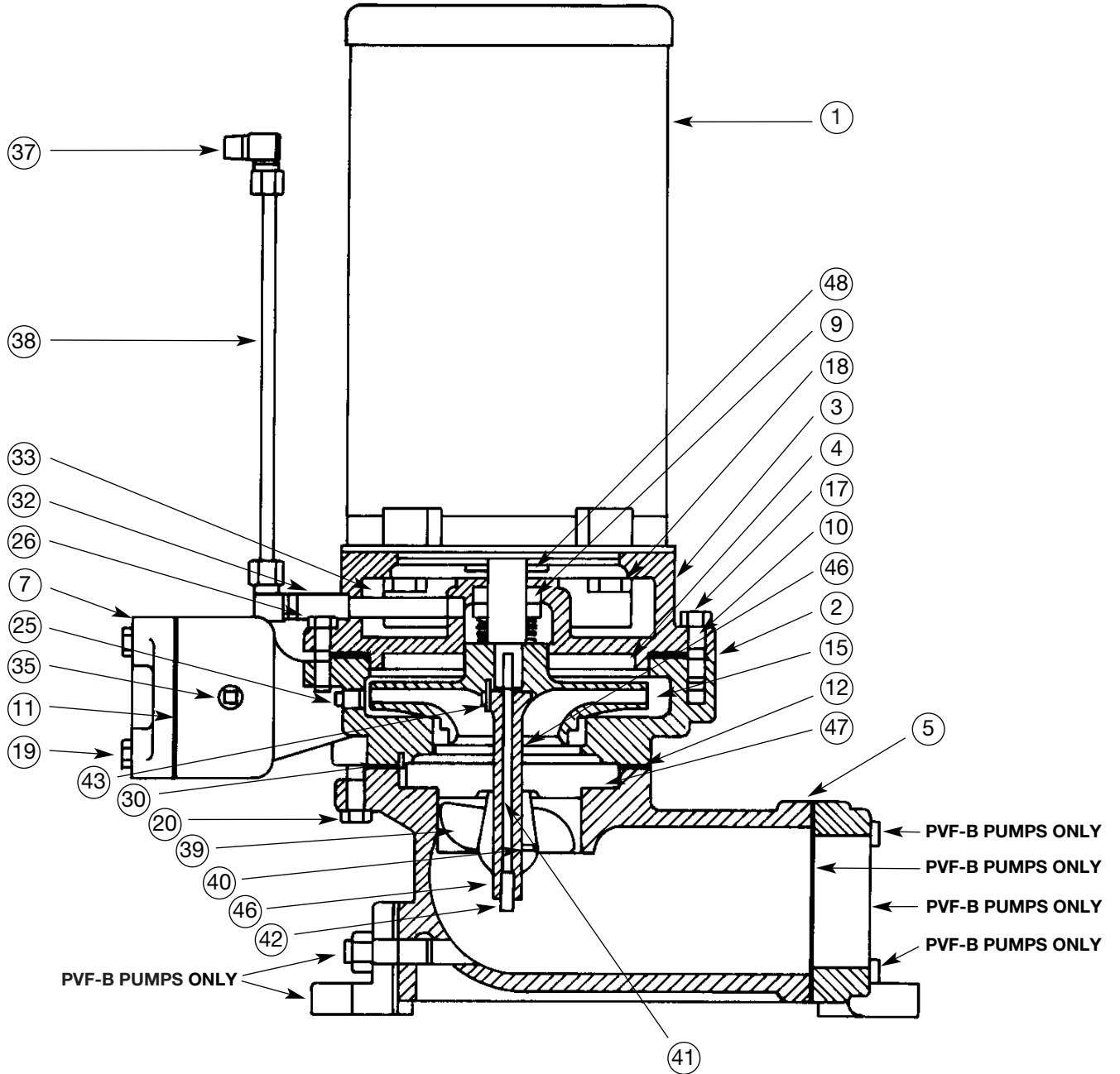
620 PF-B pumps in 2 HP were discontinued in 1984. At this printing, limited parts may still be obtained. Consult the factory or your representative for availability.

625 PF-B pumps in 7½ HP were discontinued in 1984. At this printing, limited parts may still be obtained. Consult the factory or your representative for availability.

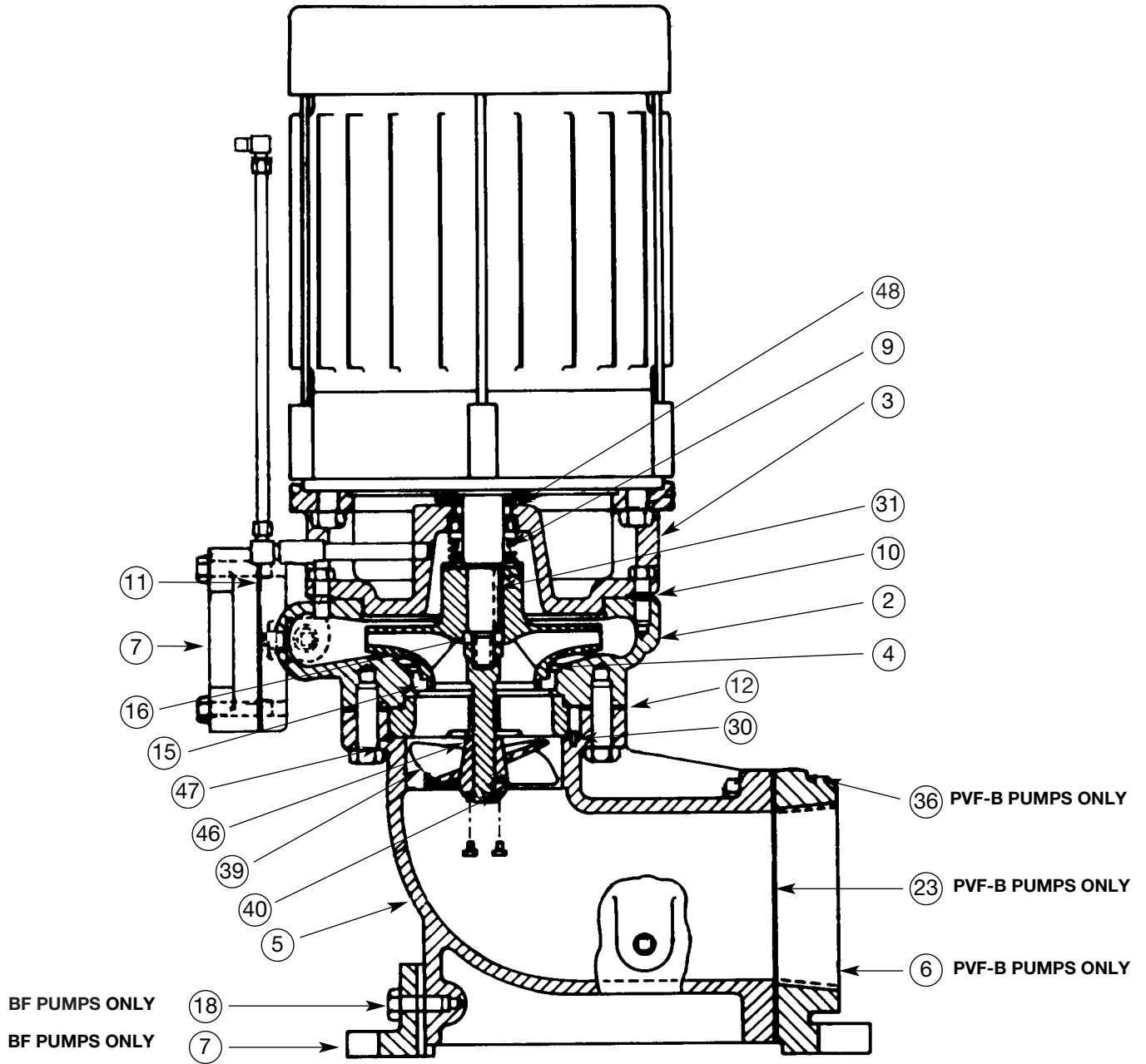
625 HB pumps in 7½ HP were discontinued in 1984. At this printing, limited parts may still be obtained. Consult the factory or your representative for availability.

627 PF-B pumps in 1½ and 2 HP were discontinued in 1984. At this printing, limited parts may still be obtained. Consult the factory or your representative for availability.

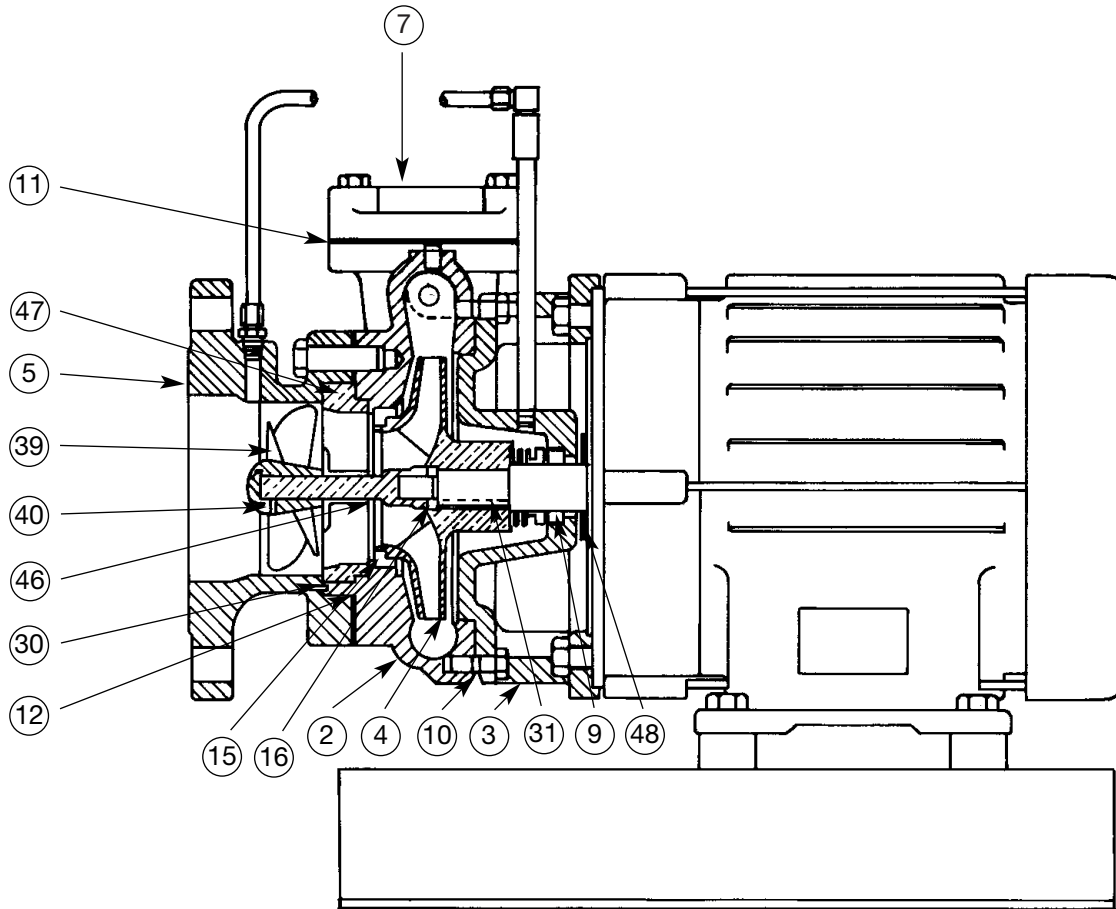
Typical Assembly for 1/3 HP thru 3 HP Pumps



Typical Assembly for 5 HP thru 15 HP Pumps



Typical Assembly for Horizontal B-35 Pumps



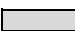
Series B-35, Low-NPSH, 3500 rpm Pumps (parts sheet 1 / 3)								
Item #	Description	613 PF-B	613 HB	614 PF-B	614 HB	616 PF-B	617 PF-B	
		5 & 7½ HP	5 HP	5 & 7½ HP	5 & 7½ HP	½ - 2HP ⁽²⁾	½ - 2HP	3HP
2	VOLUTE WITH WEAR RING	DP1627	DP1627	DP1632	DP1632	DP1606	DP1607	DP1607
3	MOTOR BRACKET	DP0212	DP0212	DP0212	DP0212	DP0208	DP0216	DP0214
4	IMPELLER ⁽¹⁾ (ref. unit description for proper trim size)	DP0314	DP0314	DP0326	DP0326	DP0336	DP0346	DP0348
5	SUCTION HOUSING	DP0688	DP0686	DP0696	DP0984	DP0692	DP0692	DP0692
7	COMPANION FLANGE	DF0678	DF0678	DF0483	DF0483	-----	-----	-----
9	SEAL & GASKET KIT	180011	180011	180011	180011	180014	180014	180010
10	HEAD GASKET	DG0087	DG0087	DG0087	DG0087	DG0086	DG0087	DG0087
11	COMPANION FLANGE GASKET	DG0141	DG0141	DG0142	DG0142	-----	-----	-----
12	SUCTION HOUSING GASKET	DG0072	DG0072	DG0165	DG0165	DG0166	DG0166	DG0166
46	PROPELLER STEM	DP0716	DP0716	DP0720	DP0720	DP0708	DP0708	DP0708
15	WEAR RING	DP0483	DP0483	DP0484	DP0484	DP0482	DP0482	DP0482
16	SHAFT WASHER	DJ0280	DJ0280	DJ0280	DJ0280	-----	-----	-----
30	LOCKING PIN	DJ0448	DJ0448	DJ0448	DJ0448	DJ0448	DJ0448	DJ0448
31	IMPELLER KEY	DP0586	DP0586	DP0586	DP0586	-----	-----	-----
39	PROPELLER	DP0622	DP0622	DP0626	DP0626	DP0618	DP0618	DP0618
40	PROPELLER SET SCREW	DJ0201	DJ0201	DJ0201	DJ0201	DJ0201	DJ0201	DJ0201
41	LOCKING STUD	-----	-----	-----	-----	DP0890	DP0890	DP0887
42	PROPELLER LOCK NUT	-----	-----	-----	-----	DJ0225	DJ0225	DJ0225
43	STEM LOCKING PIN	-----	-----	-----	-----	DJ0448	DJ0448	DJ0448
47	DIFFUSER	DP0828	DP0828	DP0822	DP0822	DP0824	DP0824	DP0824
48	SLINGER	DP0851	DP0851	DP0851	DP0851	DP0848	DP0848	DP0849

- Shaded items are recommended spare parts.

⁽¹⁾ Specify required diameter when ordering. If diameter is not specified full diameter will be furnished

⁽²⁾ Parts may be used for 180030, and 180101 thru 180106 Stock Pumps.

Series B-35, Low-NPSH, 3500 rpm Pumps (parts sheet 2 / 3)								
Item #	Description	618 PF-B		618 HB		620 PF-B		620 HB
		5 & 7½ HP	10 & 15 HP	5 & 7½ HP	10 & 15 HP	3 HP	5 & 7½ HP	5 & 7½ HP
2	VOLUTE WITH WEAR RING	DP1633	DP1633	DP1633	DP1633	DP1628	DP1628	DP1628
3	MOTOR BRACKET	DP1663	DP1663	DP1663	DP1663	DP1660	DP1661	DP1661
4	IMPELLER ⁽¹⁾ (ref. unit description for proper trim size)	DP0354	DP0352	DP0354	DP0352	DP3363 ⁽²⁾	DP3364 ⁽²⁾	DP3364 ⁽²⁾
5	SUCTION HOUSING	DP0696	DP0696	DP0984	DP0984	DP0688	DP0688	DP0686
7	COMPANION FLANGE	DF0678	DF0678	DF0678	DF0678	DF0676 ⁽³⁾	DF0676 ⁽³⁾	DF0676 ⁽³⁾
9	SEAL & GASKET KIT	180011	180011	180011	180011	180010	180011	180011
10	HEAD GASKET	DG0089	DG0089	DG0089	DG0089	DG0089	DG0089	DG0089
11	COMPANION FLANGE GASKET	DG0141	DG0141	DG0141	DG0141	DG0141	DG0141	DG0141
12	SUCTION HOUSING GASKET	DG0165	DG0165	DG0165	DG0165	DG0072	DG0072	DG0072
46	PROPELLER STEM	DP0722	DP0718	DP0722	DP0718	DP0712	DP0716	DP0716
15	WEAR RING	DP0484	DP0484	DP0484	DP0484	DP3365	DP3365	DP3365
**	PROPELLER WASHER	----	DJ0281	----	DJ0281	----	----	----
16	SHAFT WASHER	DJ0280	DJ0290	DJ0280	DJ0290	----	DJ0280	DJ0280
30	LOCKING PIN	DJ0448	DJ0448	DJ0448	DJ0448	DJ0447	DJ0448	DJ0448
31	IMPELLER KEY	DP0586	DP0587	DP0586	DP0587	----	DP0586	DP0586
39	PROPELLER	DP0626	DP0626	DP0626	DP0626	DP0622	DP0622	DP0622
40	PROPELLER SET SCREW	DJ0201	DJ0201	DJ0201	DJ0201	DJ0201	DJ0201	DJ0201
41	LOCKING STUD	----	----	----	----	DP0888	----	----
42	PROPELLER LOCK NUT	----	----	----	----	DJ0225	----	----
43	STEM LOCKING PIN	----	----	----	----	DJ0448	----	----
47	DIFFUSER	DP0822	DP0822	DP0822	DP0822	DP0828	DP0828	DP0828
48	SLINGER	DP0851	DP0851	DP0851	DP0851	DP0849	DP0851	DP0851

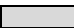
 - Shaded items are recommended spare parts.

⁽¹⁾ Specify required diameter when ordering. If diameter is not specified full diameter will be furnished

⁽²⁾ For units manufactured before May'1991, replace impeller and wear ring

⁽³⁾ DF0678 is used for flows 60 GPM and above. Use DF0676 for flows under 60 GPM

Series B-35, Low-NPSH, 3500 rpm Pumps (parts sheet 3 / 3)								
Item #	Description	625 PF-B			625 HB	626 PF-B		627 PF-B
		1½ & 2 HP	3 HP	5 HP	5 HP	1 - 2 HP	3HP	3HP
2	VOLUTE WITH WEAR RING	DP1634	DP1634	DP1634	DP1634	DP1629	DP1629	DP1612
3	MOTOR BRACKET	DP0208	DP0210	DP0226	DP0226	DP0208	DP0210	DP0214
4	IMPELLER ⁽¹⁾ (ref. unit description for proper trim size)	DP0380	DP0382	DP0384 ⁽²⁾	DP0384*	DP0390	DP0392	DP0400
5	SUCTION HOUSING	DP0696	DP0696	DP0696	DP0984	DP0688	DP0688	DP0688
7	COMPANION FLANGE	DF0678	DF0678	DF0678	DF0678	DF0678	DF0678	DF0678
9	SEAL & GASKET KIT	180014	180010	180011	180011	180014	180010	180010
10	HEAD GASKET	DG0086	DG0086	DG0086	DG0086	DG0086	DG0086	DG0087
11	COMPANION FLANGE GASKET	DG0141	DG0141	DG0141	DG0141	DG0141	DG0141	DG0141
12	SUCTION HOUSING GASKET	DG0165	DG0165	DG0165	DG0165	DG0072	DG0072	DG0072
46	PROPELLER STEM	DP0710	DP0710	DP0724	DP0724	DP0712	DP0712	DP0712
15	WEAR RING	DP0484	DP0484	DP0484	DP0484	DP0483	DP0483	DP0486
30	LOCKING PIN	DJ0447	DJ0447	-----	-----	DJ0447	DJ0447	DJ0447
31	IMPELLER KEY	-----	-----	DP0586	DP0586	-----	-----	-----
39	PROPELLER	DP0626	DP0626	DP0626	DP0626	DP0622	DP0622	DP0622
40	PROPELLER SET SCREW	DJ0201	DJ0201	DJ0201	DJ0201	DJ0201	DJ0201	DJ0201
41	LOCKING STUD	DP0892	DP0888	-----	-----	DP0892	DP0888	DP0888
42	PROPELLER LOCK NUT	DJ0225	DJ0225	-----	-----	DJ0225	DJ0225	DJ0225
43	STEM LOCKING PIN	DJ0448	DJ0448	DJ0448	DJ0448	DJ0448	DJ0448	DJ0448
47	DIFFUSER	DP0822	DP0822	DP0822	DP0822	DP0828	DP0828	DP0828
48	SLINGER	DP0848	DP0849	DP0851	DP0851	DP0848	DP0849	DP0849
Misc.	SEAL SPRING HOLDER	-----	-----	DP3583 ⁽³⁾	DP3583 ⁽³⁾	-----	-----	-----

 - Shaded items are recommended spare parts

⁽¹⁾ Specify required diameter when ordering. If diameter is not specified full diameter will be furnished

⁽²⁾ Required for units manufactured before November 1992, when replacing impeller

⁽³⁾ Pumps, manufactured after November 1992, use seal spring holder

Footed Suction Flange Components (2")

Description	Part #	Qty
Suction Flange Gasket	DG0060	1
Stud	DJ0478	1
Capscrew	P01260	4
Hex Nut	F11400	5
Support Foot	DM0416	1
Suction Flange	DP0998	1

Footed Suction Flange Components (2 1/2")

Description	Part #	Qty
Suction Flange Gasket	DG0060	1
Stud	DJ0478	1
Capscrew	P01260	4
Hex Nut	F11400	5
Support Foot	DM0416	1
Suction Flange	DP0992	1

Footed Suction Flange Components (4")

Description	Part #	Qty
Suction Flange Gasket	DG0157	1
Capscrew	P19480	1
Capscrew	F11400	4
Support Foot	DM0416	1
Suction Flange	DP0950	1

REPLACEMENT MOTOR SELECTION TABLE

Enclosure	HP	HB-17 pump 1750 rpm			B-35 & HB-35 pump 3500 rpm			
		3 phase	3 phase	3 phase	1 phase (B-35 only)	3 phase	3 phase	3 phase
		200 V	230/460 V	575 V	115/208/230 V	200 V	230/460 V	575 V
ODP	1/3	-	-	-	DM0422	DM1010	DM2010	DM3010
	1/2	-	-	-	DM0423	DM1029	DM2029	DM3029
	3/4	-	-	-	DM0424	DM1045	DM2045	DM3045
	1	-	-	-	DM0425	DM1060	DM2060	DM3060
	1-1/2	-	-	-	DM0426	DM1076	DM0456	DM3076
	2	-	-	-	DM0427	DM1096	DM0458	DM3096
	3	-	-	-	-	DM1119	DM0460	DM3119
	5	DM1139	DM0448	DM3139	-	DM1140	DM0462	DM3140
	7-1/2	DM1152	DM0450	DM3152	-	DM1153	DM0464	DM3153
	10	DM1159	DM0452	DM3159	-	DM1170	DM0466	DM3170
15	DM1185	DM0454	DM3185	-	DM1180	DM0468	DM3180	
TEFC	1/3	-	-	-	DM0017	DM1018	DM2018	DM3018
	1/2	-	-	-	DM0428	DM1037	DM2037	DM3037
	3/4	-	-	-	DM0429	DM1053	DM2053	DM3053
	1	-	-	-	DM0430	DM1064	DM2064	DM3064
	1-1/2	-	-	-	DM0431	DM1078	DM0457	DM3078
	2	-	-	-	DM0432	DM1099	DM0459	DM3099
	3	-	-	-	-	DM1116	DM0461	DM3116
	5	DM1134	DM0449	SPECIAL	-	DM1222	DM0463	DM3222
	7-1/2	DM1147	DM0451	SPECIAL	-	DM1224	DM0465	DM3224
	10	DM1226	DM0453	SPECIAL	-	DM1167	DM0467	DM3167
15	DM1186	DM0455	SPECIAL	-	DM1184	DM0469	DM3184	

Check **Xylem Bell & Gossett Motor Status Listing** for current stock status. **Specials** require extended lead times.

Note: 620 PF, PVF (C-35) & 620 PF-B, PVF-B (B-35) pumps require shaft extensions.

Note: C-17 (3/4 HP through 2 HP) pumps require shaft extensions.

Shaft extensions and drive-lock pins should be ordered as separate items.

For explosion proof motors, please consult factory.

Xylem |'zīləm|

- 1) The tissue in plants that brings water upward from the roots;
- 2) a leading global water technology company.

We're a global team unified in a common purpose: creating advanced technology solutions to the world's water challenges. Developing new technologies that will improve the way water is used, conserved, and re-used in the future is central to our work. Our products and services move, treat, analyze, monitor and return water to the environment, in public utility, industrial, residential and commercial building services, and agricultural settings. With its October 2016 acquisition of Sensus, Xylem added smart metering, network technologies and advanced data analytics for water, gas and electric utilities to its portfolio of solutions. In more than 150 countries, we have strong, long-standing relationships with customers who know us for our powerful combination of leading product brands and applications expertise with a strong focus on developing comprehensive, sustainable solutions.

For more information on how Xylem can help you, go to www.xylem.com

We value your feedback. Please take our 3 question survey at **bellgossett.com/survey** to let us know how we are doing.



Xylem Inc.
8200 N. Austin Avenue
Morton Grove, Illinois 60053
Phone: (847) 966-3700
Fax: (847) 965-8379
www.bellgossett.com