

\$13.50

Auwe-co[®]

PRODUCTS

Over 23,000 Items Available



**The Encyclopedia of the
Automotive Body Hardware Industry**

Sec. 25

HOSE CLAMPS



**Single Bond
Hose Clamps**
Black Nylon

| Auveco Part No. | Size | Clamping Range | | Unit Pkg. |
|-----------------|----------|----------------|-------|-----------|
| | | Min. | Max. | |
| 19558 | 1/4" | .246 | .290 | 25 |
| 19559 | 5/16" | .300 | .350 | 25 |
| 19560 | 11/32" | .360 | .406 | 25 |
| 19561 | 13/32" | .410 | .468 | 25 |
| 19562 | 15/32" | .475 | .536 | 25 |
| 19564 | 19/32" | .597 | .665 | 25 |
| 19566 | 3/4" | .730 | .830 | 25 |
| 19568 | 61/64" | .953 | 1.093 | 25 |
| 19569 | 1-1/32" | 1.031 | 1.187 | 25 |
| 19570 | 1-1/4" | 1.250 | 1.425 | 10 |
| 19571 | 1-13/32" | 1.406 | 1.610 | 10 |
| 19572 | 1-19/32" | 1.593 | 1.812 | 10 |
| 19575 | 2-1/8" | 2.120 | 2.390 | 10 |



Spring Action Hose Clamps

Spring Steel • Heat Treated
Phosphate and Paint

| Auveco Part No. | Hose O.D. | Color | Max. Dia. Clamp in Free Position | Width | Unit Pkg. |
|-----------------|-----------|-------|----------------------------------|-------|-----------|
| 12682 | 3/8" | Black | .321 | 5/16" | 100 |
| 12683 | 7/16" | Green | .405 | 5/16" | 100 |
| 12684 | 1/2" | Red | .460 | 5/16" | 100 |
| 12685 | 9/16" | Black | .520 | 5/16" | 100 |
| 12686 | 5/8" | Olive | .583 | 5/16" | 100 |
| 12688 | 11/16" | Red | .655 | 5/16" | 100 |
| 12689 | 3/4" | Black | .645 | 3/8" | 100 |

Crimp Type Hose Clamp Tool

18448

Photo not actual size



For installing and removing
Auveco Crimp Type Hose Clamps 18436-18447.

UNIT PACKAGE: 1

Crimp Type Hose Clamps

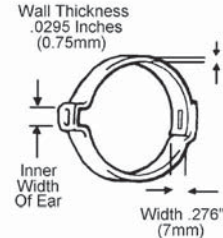
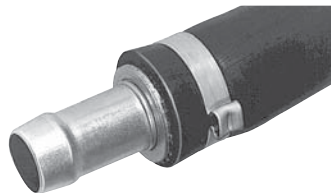
Zinc Plated

Photos not actual size

- For low pressure applications such as automotive, appliance, industrial machinery, etc.
- Easy to apply
- Simply slide on and clamp
- Sizes for all Hoses
- Ideal for Mass Production
- Clamps Tight
- Clamps Quickly
- Only one simple motion needed
- "Full Round" Clamping Pressure
- No gap areas to leak
- Low profile-out of the way
- Avoids Hose cutting and abrasion



Position clamp on hose



Firmly squeeze ear



| Auveco Part No. | Nominal Size | Inches | | MM | | Inner Width of Ear | | Unit Pkg. |
|-----------------|--------------|--------------|-------------|--------|-----|--------------------|--|-----------|
| | | Closed-Open | Closed-Open | Inches | MM | | | |
| 18436 | 3/8" | .350 - .414 | 8.9 - 10.5 | .197 | 5 | 25 | | |
| 18437 | 7/16" | .381 - .444 | 9.7 - 11.3 | .197 | 5 | 25 | | |
| 18438 | 15/32" | .394 - .486 | 10.4 - 12.3 | .197 | 6 | 25 | | |
| 18439 | 1/2" | .453 - .524 | 11.4 - 13.3 | .236 | 6 | 25 | | |
| 18440 | 35/64" | .472 - .551 | 11.9 - 14.0 | .256 | 6.5 | 25 | | |
| 18441 | 9/16" | .496 - .571 | 12.6 - 14.5 | .236 | 6 | 25 | | |
| 18442 | 5/8" | .543 - .618 | 13.8 - 15.7 | .236 | 6 | 25 | | |
| 18443 | 11/16" | .594 - .669 | 15.1 - 17.0 | .236 | 6 | 25 | | |
| 18444 | 23/32" | .618 - .728 | 15.7 - 18.5 | .354 | 9 | 25 | | |
| 18445 | 3/4" | .669 - .779 | 17.0 - 19.8 | .354 | 9 | 25 | | |
| 18446 | 7/8" | .779 - .890 | 19.8 - 22.6 | .354 | 9 | 25 | | |
| 18447 | 1" | .898 - 1.008 | 22.8 - 25.6 | .354 | 9 | 25 | | |



Constant Tension Band Hose Clamps

For Heater & Radiator Hoses
 1074 Spring Steel • Black OEM Finish
 Conforms to SAE J1508 & GM 6298M
 Rated at 30 P.S.I.

| Auveco Part No. | Clamping Range | Band Width | Unit Pkg. |
|-----------------|-------------------------------------|---------------|-----------|
| 18127 | 15.2mm - 18.5mm (5/8" - 23/32") | 15mm (19/32") | 10 |
| 18128 | 17.8mm - 20.0mm (23/32" - 25/32") | 15mm (19/32") | 10 |
| 18129 | 22.0mm - 26.0mm (7/8" - 1") | 15mm (19/32") | 10 |
| 18132 | 37.2mm - 44.5mm (1-15/32" - 1-3/4") | 15mm (19/32") | 5 |



Wire Type Hose Clamps

To Install and remove wire type hose clamps use Auveco Tool 20902 (See page 849)

| Auveco Part No. | Hose Size O.D. | Unit Pkg. |
|-----------------|----------------|-----------|
| 5354 | 9/16" | 50 |
| 5357 | 3/4" | 50 |
| 17086 | 13/16" | 50 |
| 5358 | 15/16" | 50 |
| 16603 | 1-7/8" | 10 |
| 16604 | 2" | 10 |



9324

Mini Clamp
 Stainless Steel Band with
 Double Plated Hex Head Steel Screw
 Band Width: 5/16"
 Minimum Range 1/4" - Maximum Range 5/8"

UNIT PACKAGE: 10



10221

Mini Clamp
 Stainless Steel Band with Double
 Plated Slotted Head Steel Screw
 Band Width: 5/16"
 Minimum Range 1/2" - Maximum Range 7/8"

UNIT PACKAGE: 10



Hex Slotted Screw-Worm Gear Type-Hose Clamps

Stainless Steel
 Band Saddle Screw Housing
 300 Series Stainless (Non-Corrosive)
 Screw is 400 Series (Magnetic) Stainless

| Auveco Part No. | Inside Std. Size | Clamp Range Min.-Max | Hose I.D. 3/16" Wall | Fits Plastic Pipe Size | Band Width | Unit Pkg. |
|-----------------|------------------|----------------------|----------------------|------------------------|------------|-----------|
| 9584 | 8 | 7/16" - 1" | 5/16" to 1/2" | 1/2" to 9/16" | 9/16" | 10 |
| 9585 | 10 | 1/2" - 1-1/8" | 3/8" to 5/8" | 1/2" to 3/4" | 9/16" | 10 |
| 9586 | 12 | 1/2" - 1-1/4" | 5/8" to 3/4" | 1/2" to 3/4" | 9/16" | 10 |
| 18483 | 16 | 3/4" - 1-1/2" | 3/4" to 7/8" | 1" to 1-1/4" | 9/16" | 10 |
| 9587 | 20 | 3/4" - 1-3/4" | 1" to 1-1/4" | 1" to 1-1/4" | 9/16" | 10 |
| 9588 | 24 | 1" - 2" | 1-1/4" to 1-1/2" | 1" to 1-1/2" | 9/16" | 10 |
| 9589 | 28 | 1-5/16" - 2-1/4" | 1-1/4" to 1-3/4" | 1-1/4" to 1-1/2" | 9/16" | 10 |
| 9590 | 32 | 1-9/16" - 2-1/2" | 1-1/2" to 2" | 1-1/2" to 2" | 9/16" | 10 |
| 9591 | 36 | 7/8" - 2-3/4" | 1-3/4" to 2-1/4" | 1-1/2" to 2" | 9/16" | 10 |
| 9592 | 40 | 1-1/8" - 3" | 2" to 2-1/2" | 2" to 2-1/2" | 9/16" | 10 |
| 9593 | 48 | 1-5/8" - 3-1/2" | 2-1/4" to 3" | 2-5/8" to 3" | 9/16" | 10 |
| 9594 | 52 | 1-7/8" - 3-3/4" | 2-13/16" to 3-3/4" | 3" | 9/16" | 10 |
| 9595 | 72 | 3-1/8" - 5" | 3-3/4" to 4-1/2" | | 9/16" | 10 |
| 9596 | 88 | 4-1/4" - 6" | 4" to 5-1/2" | 4" | 9/16" | 10 |
| 9597 | 96 | 4-3/4" - 6-1/2" | 4-1/2" to 6" | | 9/16" | 10 |
| 9598 | 104 | 5" - 7" | 5-7/8" to 6-1/2" | 6" | 9/16" | 10 |



Hex Slotted Screw-Worm Gear Type-Hose Clamps

Partial Stainless Steel
300 Series Stainless Steel Band and Saddle
Plated Screw and Housing

| Auveco Part No. | Inside Std. Size | Clamp Range Min.-Max | Hose I.D. 3/16" Wall | Fits Plastic Pipe Size | Band Width | Unit Pkg. |
|-----------------|------------------|----------------------|----------------------|------------------------|------------|-----------|
| 5347 | 10 | 1/2" - 1-1/8" | 3/8" to 5/8" | 1/2" to 3/4" | 9/16" | 10 |
| 5348 | 12 | 1/2" - 1-1/4" | 5/8" to 3/4" | 1/2" to 3/4" | 9/16" | 10 |
| 18482 | 16 | 3/4"-1-1/2" | 3/4" to 7/8" | 1" to 1-1/4" | 9/16" | 10 |
| 5349 | 20 | 3/4" - 1-3/4" | 1" to 1-1/4" | 1" to 1-1/4" | 9/16" | 10 |
| 5350 | 28 | 1-5/16" - 2-1/4" | 1-1/4" to 1-3/4" | 1-1/4" to 1-1/2" | 9/16" | 10 |
| 5351 | 32 | 1-9/16" - 2-1/2" | 1-1/2" to 2" | 1-1/2" to 2" | 9/16" | 10 |
| 5352 | 36 | 7/8" - 2-3/4" | 1-3/4" to 2-1/4" | 1-1/2" to 2" | 9/16" | 10 |
| 9357 | 48 | 1-5/8" - 3-1/2" | 2-1/4" to 3" | 2-1/4" to 2-3/4" | 9/16" | 10 |
| 9599 | 52 | 1-7/8" - 3-3/4" | 2-13/16" to 3-3/4" | 3" | 9/16" | 10 |
| 9358 | 72 | 3-1/8" - 5" | 3-3/4" to 4-1/2" | | 9/16" | 10 |
| 9600 | 88 | 4-1/4" - 6" | 4" to 5-1/2" | 4" | 9/16" | 10 |
| 9601 | 96 | 4-3/4" - 6-1/2" | 4-1/2" to 6" | | 9/16" | 10 |

Norma Torro® (European Style) Hose Clamps

DIN 3017 • Stainless Steel Band & Housing • Zinc Plated Steel Screw



Unique off-set non-welded design of the housing provides resistance to over-tightening damage to the hose. The short housing saddle gives a smooth underside ensuring high sealing efficiency. These clamps are original equipment on both domestic and import vehicles. They are particularly suited for fuel, vacuum, water, emission and heater hoses and can be used with silicone hoses.

| Auveco Part No. | Clamping Range | Hex Size | Band Width | Unit Pkg. |
|-----------------|-----------------------------|----------|--------------|-----------|
| 16868 | 8mm-12mm (5/16"-1/2") | 6mm* | 8mm (5/16") | 10 |
| 16869 | 10mm-16mm (3/8"-5/8") | 6mm* | 8mm (5/16") | 10 |
| 16870 | 12mm-18mm (1/2"-3/4") | 6mm* | 8mm (5/16") | 10 |
| 16871 | 8mm-16mm (5/16"-5/8") | 6mm | 9mm (11/32") | 10 |
| 16872 | 12mm-20mm (1/2"-3/4") | 6mm | 9mm (11/32") | 10 |
| 16873 | 16mm-25mm (5/8"-1") | 6mm | 9mm (11/32") | 10 |
| 16874 | 20mm-32mm (3/4"-1-1/4") | 6mm | 9mm (11/32") | 10 |
| 16875 | 25mm-40mm (1"-1-5/8") | 6mm | 9mm (11/32") | 10 |
| 16876 | 30mm-45mm (1-3/16"-1-3/4") | 6mm | 9mm (11/32") | 10 |
| 16877 | 32mm-50mm (1-1/4"-2") | 6mm | 9mm (11/32") | 10 |
| 16878 | 40mm-60mm (1-5/8"-2-3/8") | 6mm | 9mm (11/32") | 10 |
| 19252 | 50mm-70mm (1-31/32"-2-3/4") | 6mm | 9mm (11/32") | 10 |
| 19253 | 60mm-80mm (2-3/8"-3-1/8") | 6mm | 9mm (11/32") | 10 |
| 19254 | 70mm-90mm (2-3/4"-3-9/16") | 6mm | 9mm (11/32") | 10 |

*Phillips Hex Drive



Photo not actual size

16879

Flexible Nut Driver
For 6mm Hex
Fits Auveco Hose Clamps
16868 - 16878 and 19252 - 19254

UNIT PACKAGE: 1



Type "G" Miniature Hose Clamp

These clamps fit all standard automotive fuel injection hoses. Approved for all O.E.M. applications
Zinc Plated

| Auveco Part No. | Clamp Range Min.-Max | Hose I.D. | Band Width | Unit Pkg. |
|-----------------|------------------------------|-----------|-----------------|-----------|
| 16766 | 8mm-9.5mm 5/16"-13/32" | 5/32" | 9mm (11/32") | 10 |
| 16767 | 9.5mm-11.5mm 3/8"-15/32" | 7/32" | 9mm (11/32") | 10 |
| 15860 | 10.5mm-12.5mm 7/16"-1/2" | 1/4" | 9mm (11/32") | 10 |
| 15861 | 12.5mm-14.5mm 1/2"-19/32" | 5/16" | 9mm (11/32") | 10 |
| 15862 | 13.5mm-15.5mm 17/32"-5/8" | 3/8" | 9mm (11/32") | 10 |
| 21256 | 15mm-17.5mm 19/32"-11/16" | 3/8" | 9mm (11/32") | 10 |



Steel Clamps with Neoprene Jacket Zinc Plated

UNIT PACKAGE: 10

| Auveco Part No. | Tube Size | Band Width | Mounting Hole Diameter |
|-----------------|-----------|------------|------------------------|
| 20502 | 1/4" | 1/2" | 17/64" |
| 20503 | 3/8" | 1/2" | 17/64" |
| 20504 | 1/2" | 1/2" | 17/64" |
| 20505 | 5/8" | 1/2" | 17/64" |
| 20506 | 3/4" | 1/2" | 17/64" |
| 20507 | 7/8" | 1/2" | 17/64" |
| 20508 | 1" | 1/2" | 17/64" |
| 20509 | 1-1/4" | 1/2" | 17/64" |
| 20510 | 1-1/2" | 1/2" | 17/64" |
| 20511 | 1-3/4" | 1/2" | 17/64" |
| 20512 | 2" | 1/2" | 17/64" |



Natural Nylon Tubing Clamps

| Auveco Part No. | Hole Dia. | Width | Tube Dia. | Unit Pkg. |
|-----------------|-----------|-------|-----------|-----------|
| 15525 | 3/16" | 3/8" | 1/8" | 50 |
| 15526 | 3/16" | 3/8" | 3/16" | 50 |
| 9246 | 3/16" | 3/8" | 1/4" | 25 |
| 9247 | 3/16" | 3/8" | 5/16" | 25 |
| 9248 | 3/16" | 3/8" | 3/8" | 25 |
| 9249 | 3/16" | 3/8" | 1/2" | 25 |
| 9250 | 3/16" | 1/2" | 5/8" | 25 |
| 9251 | 3/16" | 1/2" | 3/4" | 25 |
| 9252 | 3/16" | 1/2" | 1" | 25 |



Aluminum Tubing Clamps With Neoprene Jacket

| Auveco Part No. | Hole Dia. | Width | Tube Dia. | Unit Pkg. |
|-----------------|-----------|-------|-----------|-----------|
| 17361 | 1/4" | 1/2" | 1/4" | 15 |
| 17362 | 1/4" | 1/2" | 5/16" | 15 |
| 17363 | 1/4" | 1/2" | 3/8" | 15 |
| 17364 | 1/4" | 1/2" | 1/2" | 15 |
| 17365 | 1/4" | 1/2" | 5/8" | 15 |
| 17366 | 1/4" | 1/2" | 3/4" | 15 |
| 17367 | 1/4" | 1/2" | 7/8" | 15 |
| 17368 | 1/4" | 1/2" | 1" | 15 |
| 22170 | 1/4" | 1/2" | 1-1/4" | 10 |
| 22171 | 1/4" | 1/2" | 1-1/2" | 10 |
| 22172 | 1/4" | 1/2" | 2" | 10 |



Insulated "Half" Clamps Galvanized Coated with Black Vinyl (1/32" Thick)

| Auveco Part No. | Inside Diameter | Hole Diameter | Center to Center | Hole Center to End | Top of Radius to Base | Gauge | Width | Unit Pkg. |
|-----------------|-----------------|---------------|------------------|--------------------|-----------------------|-------|-------|-----------|
| 10608 | 3/16" | 7/32" | 7/16" | 1/4" | 5/32" | .032 | 1/2" | 25 |
| 10609 | 1/4" | 7/32" | 1/2" | 1/4" | 7/32" | .048 | 1/2" | 25 |
| 10610 | 5/16" | 9/32" | 17/32" | 5/16" | 9/32" | .048 | 5/8" | 25 |
| 10611 | 3/8" | 9/32" | 9/16" | 5/16" | 11/32" | .048 | 5/8" | 25 |
| 10612 | 7/16" | 9/32" | 5/8" | 5/16" | 13/32" | .060 | 5/8" | 25 |
| 10613 | 1/2" | 9/32" | 11/16" | 5/16" | 15/32" | .060 | 5/8" | 25 |
| 10614 | 5/8" | 9/32" | 13/16" | 5/16" | 9/16" | .060 | 5/8" | 25 |
| 10615 | 3/4" | 9/32" | 7/8" | 5/16" | 11/16" | .060 | 5/8" | 25 |