

Declyn™ Wall-Hung Lavatory

- Wall-hung sink
- Vitreous china
- Rear overflow
- Soap depression
- Faucet ledge  
Shown with 2000.101 Ceramix faucet  
(not included)

- ❑ **0321.026** With wall hanger (Illustrated)  
Faucet holes on 102mm (4") centers
- ❑ **0321.075** For concealed arms support  
Faucet holes on 102mm (4") centers

Nominal Dimensions:

470 x 432mm  
(18-1/2" x 17")

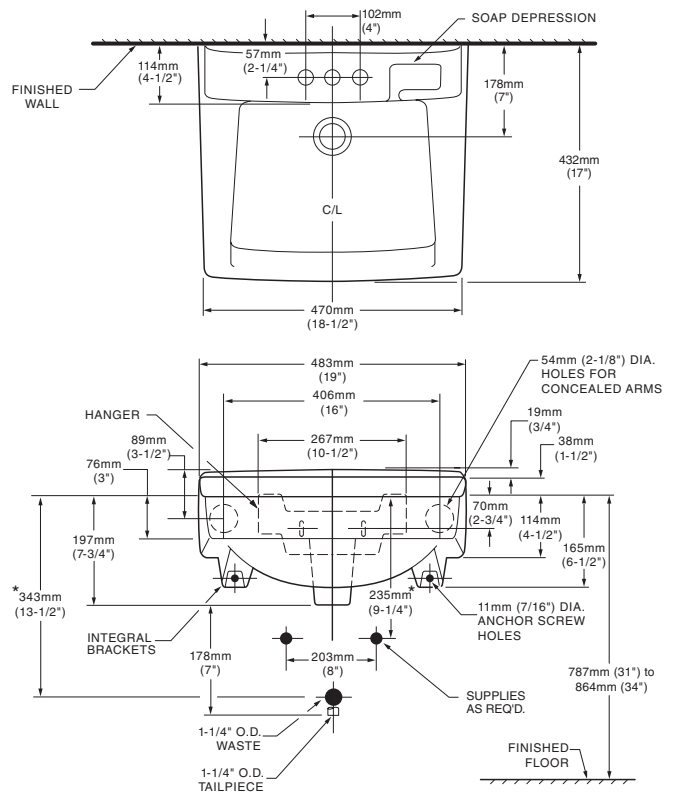
Bowl sizes:

362mm (14-1/4") wide  
273mm (10-3/4") front to back  
152mm (6") deep

Compliance Certifications -

Meets or Exceeds the Following Specifications:

- ASME A112.19.2/CSA 45.1



**To Be Specified:**

- ❑ Color: ❑ White
- ❑ Faucet\*:
- ❑ Faucet Finish:
- ❑ Supplies:
- ❑ 1-1/4" Trap:
- ❑ Nipple:
- ❑ Concealed Arms Support (by others):

\* See faucet section for additional models available

NOTES:

\* DIMENSIONS SHOWN FOR LOCATION OF SUPPLIES AND "P" TRAP ARE SUGGESTED. PROVIDE SUITABLE REINFORCEMENT FOR ALL WALL SUPPORTS. FITTINGS NOT INCLUDED AND MUST BE ORDERED SEPARATELY.

**IMPORTANT:** Dimensions of fixtures are nominal and may vary within the range of tolerances established by ANSI Standard A112.19.2. These measurements are subject to change or cancellation. No responsibility is assumed for use of superseded or voided pages.