

**MULTI-POSITION, VARIABLE-SPEED,
 ECM-BASED AIR HANDLER
 WITH INTERNAL TXV
 COMFORTBRIDGE™ COMPATIBLE
 2 TO 5 TONS**



Contents

Air Handler Nomenclature..... 2
 Heater Kit Nomenclature 2
 Product Specifications..... 3
 Dimensions 4
 Airflow Data 5
 Heat Kit Data..... 7
 Wiring Diagram..... 16
 Accessories 18

Product Features

- Internal factory-installed thermal expansion valves for cooling and heat pump applications
- Variable-speed ECM blower motor
- Integrated communicating ComfortBridge™ Technology
- Commissioning and diagnostics via on board Bluetooth with the CoolCloud phone and tablet application
- Auto configuration of the airflow and tonnage in communicating mode
- Provides constant CFM over a wide range of static pressure conditions independent of duct system
- CFM indicator
- Fault recall of six most recent faults
- Provides adjustable low CFM for efficient fan-only operation
- Improved humidity and comfort control
- Built-in compatibility with multi-stage heat pump and cooling applications
- All-aluminum evaporator coil
- AHRI certified; ETL listed
- Rigid SmartFrame™ cabinet
- Cabinet air leakage less than 2.0% at 1.0 inch H₂O when tested in accordance with ASHRAE standard 193
- Cabinet air leakage less than 1.4% at 0.5 inch H₂O when tested in accordance with ASHRAE standard 193
- Horizontal or vertical configuration capabilities
- 21" depth for easier attic access
- DecaBDE-free thermoplastic drain pan with secondary drain connections
- Screw-less sides and back helps to reduce condensation when installed in humid locations
- Foil-faced insulation covers the internal casing to reduce cabinet condensation
- Galvanized, leather grain-embossed finish
- Glue-less cabinet insulation retention
- Tool-less filter access
- Field Installed 3 kW – 25 kW electric heater kits available

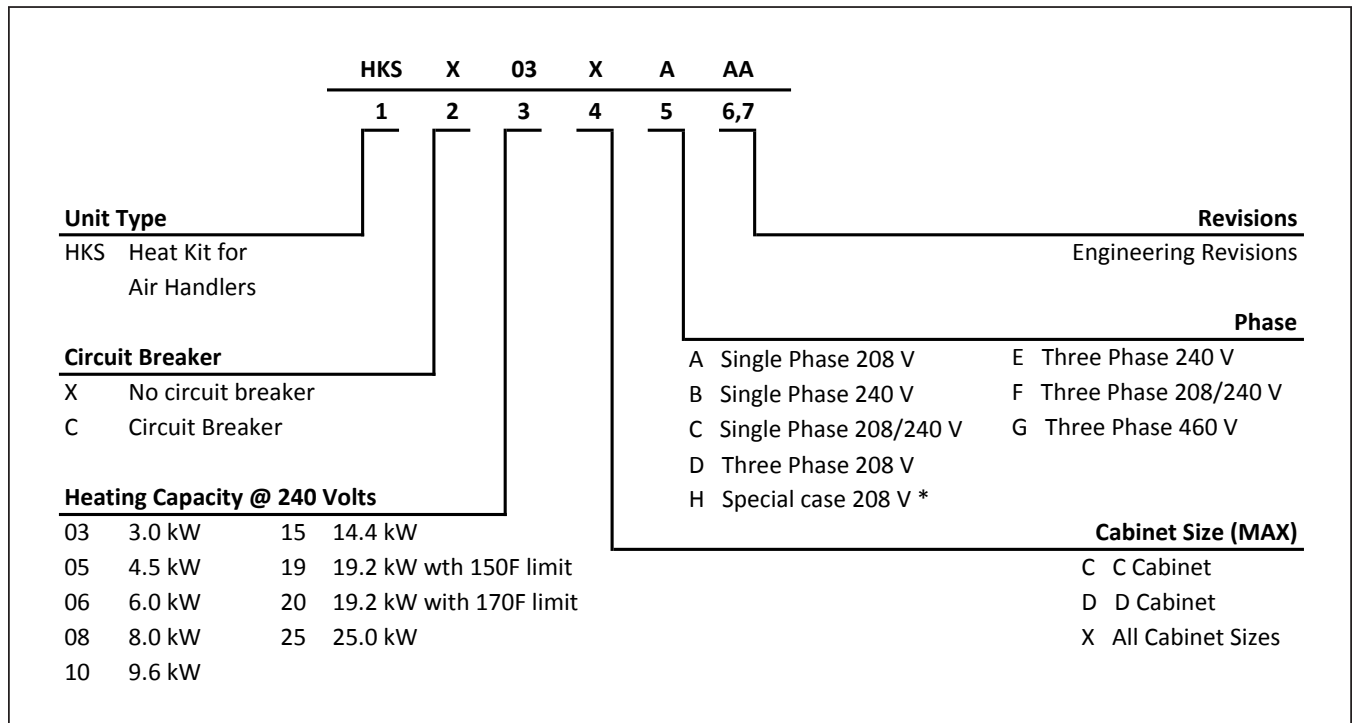
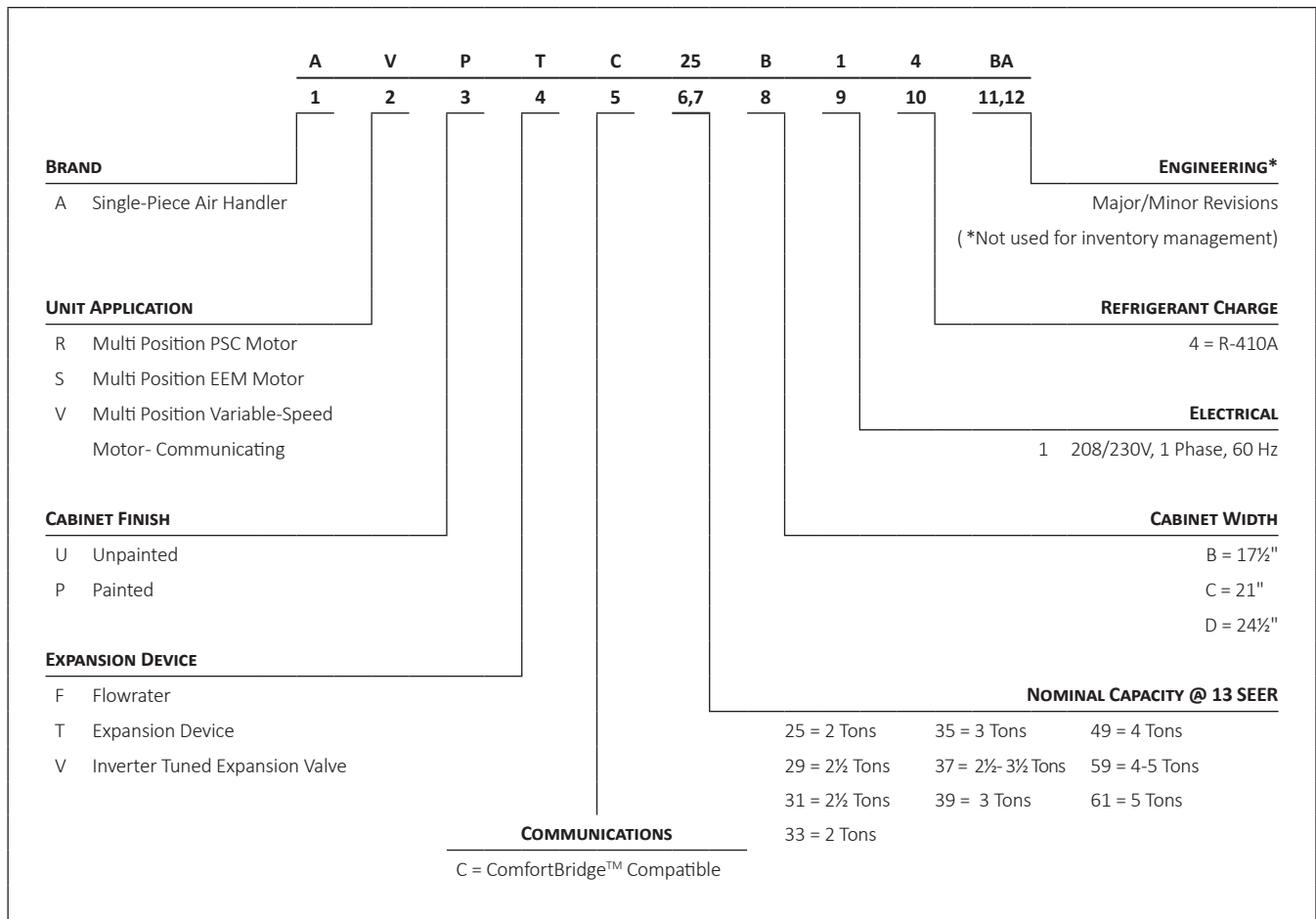


Intertek

COMPANY WITH
 QUALITY SYSTEM
 CERTIFIED BY DNV GL
 = ISO 9001 =

COMPANY WITH
 ENVIRONMENTAL SYSTEM
 CERTIFIED BY DNV GL
 = ISO 14001 =

* Complete warranty details available from your local dealer or at www.amana-hac.com. To receive the 10-Year Parts Limited Warranty, online registration must be completed within 60 days of installation. Online registration is not required in California or Québec.



*Refer S&R Plate

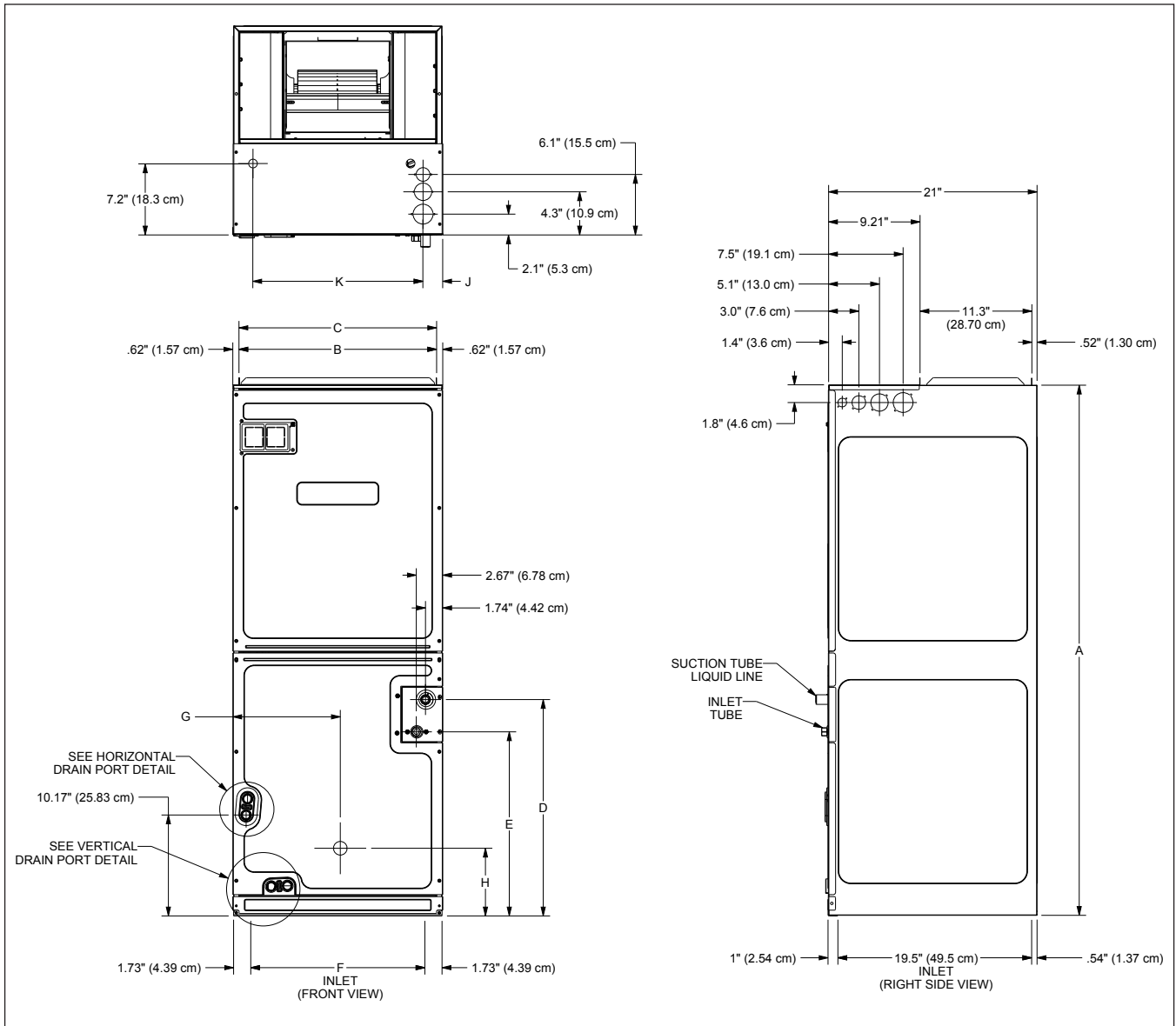
| | AVPTC 25B14B* | AVPTC 29B14B* | AVPTC 31C14B* | AVPTC 33C14B* | AVPTC 35B14B* | AVPTC 37B14B* | AVPTC 37C14B* | AVPTC 37D14B* |
|--------------------------------|------------------|------------------|------------------|------------------|------------------|------------------|------------------|------------------|
| NOMINAL RATINGS | | | | | | | | |
| Cooling (BTU/h) | 24,000 | 30,000 | 30,000 | 24,000 | 28,000 | 36,000 | 36,000 | 36,000 |
| CFM (High range) | 1085/650 | 1085/610 | 1315/870 | 1090/685 | 1020/685 | 1085/610 | 1315/870 | 1375/865 |
| BLOWER | | | | | | | | |
| Diameter | 9½" | 9½" | 10⅝" | 10⅝" | 9½" | 9½" | 10⅝" | 10⅝" |
| Width | 6" | 6" | 8" | 8" | 6" | 6" | 8" | 10⅝" |
| Coil Drain Connection FPT | ¾" | ¾" | ¾" | ¾" | ¾" | ¾" | ¾" | ¾" |
| SERVICE VALVE | | | | | | | | |
| Liquid | ⅜" | ⅜" | ⅜" | ⅜" | ⅜" | ⅜" | ⅜" | ⅜" |
| Suction | ¾" | ⅞" | ⅞" | ⅞" | ¾" | ⅞" | ⅞" | ⅞" |
| ELECTRICAL DATA | | | | | | | | |
| Voltage | 208/240 | 208/240 | 208/240 | 208/240 | 208/240 | 208/240 | 208/240 | 208/240 |
| Min Circuit Ampacity | 4.9/4.9 | 6.5/6.5 | 6.5/6.5 | 4.9/4.9 | 4.9/4.9 | 6.5/6.5 | 6.5/6.5 | 6.5/6.5 |
| Max. Overcurrent Device (amps) | 15/15 | 15/15 | 15/15 | 15/15 | 15/15 | 15/15 | 15/15 | 15/15 |
| Minimum VAC | 197 | 197 | 197 | 197 | 197 | 197 | 197 | 197 |
| Maximum VAC | 253 | 253 | 253 | 253 | 253 | 253 | 253 | 253 |
| BLOWER MOTOR | | | | | | | | |
| FLA | 3.9 | 5.2 | 5.2 | 3.9 | 3.9 | 5.2 | 5.2 | 5.2 |
| HP | ½ | ¾ | ¾ | ½ | ½ | ¾ | ¾ | ¾ |
| SHIP WEIGHT (LBS) | | | | | | | | |
| | 116 | 129 | 144 | 118 | 116 | 129 | 144 | 155 |

Note: Minimum Circuit Ampacity (MCA) and Maximum Overcurrent Protection (MOP) for blower without supplemental heat installed.
Refer to unit nameplate and/or Heat Kit Data for specification with approved accessory heaters installed

| | AVPTC 39C14B* | AVPTC 49C14B* | AVPTC 49D14B* | AVPTC 59C14B* | AVPTC 59D14B* | AVPTC 61D14B* |
|--------------------------------|------------------|------------------|------------------|------------------|------------------------------------|------------------------------------|
| NOMINAL RATINGS | | | | | | |
| Cooling (BTU/h) | 36,000 | 48,000 | 42,000 | 48,000 | 48,000 | 60,000 |
| CFM (High range) | 1315/965 | 1420/1040 | 1530/1195 | 1595/875 | 1990/1445 | 2025/1630 |
| BLOWER | | | | | | |
| Diameter | 10⅝" | 10⅝" | 10⅝" | 10⅝" | 11 ¹⁵ / ₁₆ " | 11 ¹⁵ / ₁₆ " |
| Width | 8" | 8" | 10⅝" | 8" | 10⅝" | 10⅝" |
| Coil Drain Connection FPT | ¾" | ¾" | ¾" | ¾" | ¾" | ¾" |
| SERVICE VALVE | | | | | | |
| Liquid | ⅜" | ⅜" | ⅜" | ⅜" | ⅜" | ⅜" |
| Suction | ⅞" | ⅞" | ⅞" | ⅞" | ⅞" | ⅞" |
| ELECTRICAL DATA | | | | | | |
| Voltage | 208/240 | 208/240 | 208/240 | 208/240 | 208/240 | 208/240 |
| Min Circuit Ampacity | 6.5/6.5 | 6.5/6.5 | 6.5/6.5 | 8.6/8.6 | 8.6/8.6 | 8.6/8.6 |
| Max. Overcurrent Device (amps) | 15/15 | 15/15 | 15/15 | 15/15 | 15/15 | 15/15 |
| Minimum VAC | 197 | 197 | 197 | 197 | 197 | 197 |
| Maximum VAC | 253 | 253 | 253 | 253 | 253 | 253 |
| BLOWER MOTOR | | | | | | |
| FLA | 5.2 | 5.2 | 5.2 | 6.9 | 6.9 | 6.9 |
| HP | ¾ | ¾ | ¾ | 1 | 1 | 1 |
| SHIP WEIGHT (LBS) | | | | | | |
| | 118 | 125 | 167 | 144 | 155 | 167 |

Note: Minimum Circuit Ampacity (MCA) and Maximum Overcurrent Protection (MOP) for blower without supplemental heat installed.

Refer to unit nameplate and/or Heat Kit Data for specification with approved accessory heaters installed



| MODEL | A | B | C | D | E | F | G | H |
|-------------|-------------------|-------------------|------------------|--------------------|-------------------|--------------------|--------------------|-------------------|
| AVPTC25B14* | 45 | 16 $\frac{3}{8}$ | 17 $\frac{1}{2}$ | 15 $\frac{1}{4}$ | 12 | 14 $\frac{1}{8}$ | 9 $\frac{1}{8}$ | 12 $\frac{3}{8}$ |
| AVPTC29B14* | 53 $\frac{7}{16}$ | 16 $\frac{3}{8}$ | 17 $\frac{1}{2}$ | 23 $\frac{11}{16}$ | 20 $\frac{1}{2}$ | 14 $\frac{1}{8}$ | 9 $\frac{1}{8}$ | 7 $\frac{1}{8}$ |
| AVPTC31C14* | 53 $\frac{7}{16}$ | 19 $\frac{1}{8}$ | 21 | 21 $\frac{13}{16}$ | 18 $\frac{3}{8}$ | 17 $\frac{11}{16}$ | 10 $\frac{13}{16}$ | 6 $\frac{13}{16}$ |
| AVPTC33C14* | 49 | 19 $\frac{1}{8}$ | 21 | 17 $\frac{9}{16}$ | 14 $\frac{3}{8}$ | 17 $\frac{11}{16}$ | 10 $\frac{9}{16}$ | 12 $\frac{1}{2}$ |
| AVPTC35B14* | 45 | 16 $\frac{3}{8}$ | 17 $\frac{1}{2}$ | 15 $\frac{1}{4}$ | 12 | 14 $\frac{1}{8}$ | 9 $\frac{1}{8}$ | 12 $\frac{3}{8}$ |
| AVPTC37B14* | 53 $\frac{7}{16}$ | 16 $\frac{3}{8}$ | 17 $\frac{1}{2}$ | 23 $\frac{11}{16}$ | 20 $\frac{1}{2}$ | 14 $\frac{1}{8}$ | 9 $\frac{1}{8}$ | 7 $\frac{1}{8}$ |
| AVPTC37C14* | 53 $\frac{7}{16}$ | 19 $\frac{1}{8}$ | 21 | 21 $\frac{13}{16}$ | 18 $\frac{3}{8}$ | 17 $\frac{11}{16}$ | 10 $\frac{13}{16}$ | 6 $\frac{13}{16}$ |
| AVPTC37D14* | 53 $\frac{7}{16}$ | 23 $\frac{5}{16}$ | 24 $\frac{1}{2}$ | 21 $\frac{1}{2}$ | 18 $\frac{5}{16}$ | 21 $\frac{3}{16}$ | 12 $\frac{3}{8}$ | 6 $\frac{1}{8}$ |
| AVPTC39C14* | 49 | 19 $\frac{1}{8}$ | 21 | 17 $\frac{9}{16}$ | 14 $\frac{3}{8}$ | 17 $\frac{11}{16}$ | 10 $\frac{9}{16}$ | 12 $\frac{1}{2}$ |
| AVPTC49C14* | 49 | 19 $\frac{1}{8}$ | 21 | 17 $\frac{9}{16}$ | 14 $\frac{3}{8}$ | 17 $\frac{11}{16}$ | 10 $\frac{9}{16}$ | 12 $\frac{1}{2}$ |
| AVPTC49D14* | 58 | 23 $\frac{5}{16}$ | 24 $\frac{1}{2}$ | 26 $\frac{1}{8}$ | 22 $\frac{1}{2}$ | 21 $\frac{3}{16}$ | 12 $\frac{3}{8}$ | 25 $\frac{1}{8}$ |
| AVPTC59C14* | 53 $\frac{7}{16}$ | 19 $\frac{1}{8}$ | 21 | 21 $\frac{13}{16}$ | 18 $\frac{3}{8}$ | 17 $\frac{11}{16}$ | 10 $\frac{13}{16}$ | 6 $\frac{13}{16}$ |
| AVPTC59D14* | 53 $\frac{7}{16}$ | 23 $\frac{5}{16}$ | 24 $\frac{1}{2}$ | 21 $\frac{1}{2}$ | 18 $\frac{5}{16}$ | 21 $\frac{3}{16}$ | 12 $\frac{3}{8}$ | 6 $\frac{1}{8}$ |
| AVPTC61D14* | 58 | 23 $\frac{5}{16}$ | 24 $\frac{1}{2}$ | 26 $\frac{1}{8}$ | 22 $\frac{1}{2}$ | 21 $\frac{3}{16}$ | 12 $\frac{3}{8}$ | 25 $\frac{1}{8}$ |

| MODEL | SPEED TAP | | 0.1 | 0.2 | 0.3 | 0.4 | 0.5 | 0.6 | 0.7 | 0.8 | 0.9 |
|------------------------------|-----------|------|------|------|------|------|------|------|------|------|------|
| AVPTC25B14B* | A | Low | 460 | 445 | 445 | 425 | 410 | 400 | 400 | 400 | 395 |
| | B | Low | 620 | 610 | 600 | 605 | 600 | 590 | 585 | 575 | 565 |
| | C | Low | 700 | 695 | 690 | 690 | 690 | 690 | 675 | 665 | 660 |
| | D | Low | 750 | 750 | 745 | 745 | 740 | 730 | 720 | 710 | 700 |
| | A | High | 670 | 660 | 650 | 650 | 655 | 645 | 640 | 635 | 625 |
| | B | High | 870 | 865 | 855 | 850 | 840 | 840 | 840 | 830 | 835 |
| | C | High | 1000 | 990 | 980 | 975 | 965 | 965 | 955 | 955 | 945 |
| | D | High | 1105 | 1095 | 1085 | 1075 | 1065 | 1055 | 1050 | 1040 | 1030 |
| AVPTC29B14B* AVPTC37B14B* | A | Low | 390 | 385 | 375 | 360 | 350 | 335 | 325 | 315 | 305 |
| | B | Low | 545 | 540 | 545 | 540 | 540 | 540 | 535 | 530 | 525 |
| | C | Low | 610 | 620 | 630 | 635 | 630 | 625 | 620 | 625 | 625 |
| | D | Low | 720 | 735 | 740 | 740 | 735 | 730 | 725 | 715 | 705 |
| | A | High | 615 | 620 | 610 | 605 | 610 | 615 | 615 | 620 | 625 |
| | B | High | 790 | 795 | 795 | 795 | 795 | 790 | 800 | 795 | 785 |
| | C | High | 925 | 930 | 930 | 925 | 925 | 920 | 915 | 910 | 905 |
| | D | High | 1085 | 1085 | 1085 | 1080 | 1080 | 1075 | 1070 | 1065 | 1060 |
| AVPTC31C14B* AVPTC37C14B* | A | Low | 610 | 600 | 590 | 590 | 600 | 605 | 610 | 610 | 610 |
| | B | Low | 710 | 710 | 705 | 705 | 695 | 690 | 685 | 675 | 665 |
| | C | Low | 845 | 845 | 845 | 825 | 815 | 810 | 800 | 805 | 795 |
| | D | Low | 915 | 910 | 910 | 900 | 850 | 840 | 830 | 820 | 825 |
| | A | High | 885 | 880 | 880 | 860 | 850 | 840 | 830 | 820 | 830 |
| | B | High | 1055 | 1055 | 1055 | 1040 | 1030 | 1015 | 1005 | 995 | 985 |
| | C | High | 1275 | 1270 | 1265 | 1260 | 1250 | 1240 | 1230 | 1215 | 1205 |
| | D | High | 1365 | 1360 | 1360 | 1330 | 1300 | 1290 | 1280 | 1270 | 1255 |
| AVPTC33C14B* | A | Low | 500 | 480 | 460 | 445 | 430 | 415 | 400 | 380 | 365 |
| | B | Low | 580 | 565 | 545 | 535 | 525 | 515 | 505 | 495 | 485 |
| | C | Low | 710 | 700 | 685 | 675 | 670 | 665 | 655 | 645 | 640 |
| | D | Low | 725 | 750 | 755 | 760 | 755 | 745 | 735 | 725 | 715 |
| | A | High | 710 | 700 | 685 | 685 | 685 | 680 | 670 | 660 | 645 |
| | B | High | 765 | 780 | 785 | 785 | 785 | 775 | 770 | 760 | 745 |
| | C | High | 950 | 960 | 970 | 970 | 970 | 960 | 955 | 945 | 935 |
| | D | High | 1090 | 1090 | 1090 | 1095 | 1090 | 1085 | 1080 | 1075 | 1065 |
| AVPTC35B14B* | A | Low | 395 | 390 | 395 | 390 | 385 | 380 | 380 | 380 | 380 |
| | B | Low | 580 | 580 | 590 | 580 | 575 | 580 | 575 | 575 | 575 |
| | C | Low | 670 | 670 | 680 | 690 | 680 | 670 | 660 | 660 | 665 |
| | D | Low | 715 | 705 | 710 | 720 | 715 | 705 | 690 | 685 | 680 |
| | A | High | 645 | 630 | 645 | 645 | 635 | 630 | 630 | 635 | 635 |
| | B | High | 900 | 875 | 870 | 870 | 870 | 870 | 865 | 855 | 845 |
| | C | High | 1030 | 1015 | 1005 | 995 | 990 | 985 | 990 | 990 | 980 |
| | D | High | 1075 | 1060 | 1045 | 1035 | 1030 | 1025 | 1020 | 1020 | 1015 |
| AVPTC37D14B* | A | Low | 605 | 605 | 605 | 575 | 560 | 545 | 525 | 510 | 500 |
| | B | Low | 730 | 725 | 725 | 700 | 700 | 695 | 680 | 660 | 645 |
| | C | Low | 820 | 820 | 820 | 800 | 760 | 750 | 740 | 720 | 700 |
| | D | Low | 870 | 885 | 940 | 885 | 875 | 865 | 850 | 835 | 835 |
| | A | High | 910 | 905 | 900 | 870 | 870 | 860 | 855 | 845 | 845 |
| | B | High | 1085 | 1080 | 1080 | 1060 | 1060 | 1055 | 1045 | 1035 | 1020 |
| | C | High | 1230 | 1225 | 1225 | 1205 | 1205 | 1200 | 1190 | 1185 | 1180 |
| | D | High | 1405 | 1405 | 1405 | 1370 | 1365 | 1355 | 1345 | 1335 | 1330 |

Note: When applying a humidistat (normally closed), refer to the installation and operating instructions. The humidistat can adjust the cooling airflow to 85%.

AIRFLOW DATA (CONT.)

| MODEL | SPEED TAP | | 0.1 | 0.2 | 0.3 | 0.4 | 0.5 | 0.6 | 0.7 | 0.8 | 0.9 |
|--------------|-----------|------|------|------|------|------|------|------|------|------|------|
| AVPTC39C14B* | A | Low | 715 | 695 | 680 | 685 | 685 | 680 | 675 | 665 | 650 |
| | B | Low | 755 | 770 | 780 | 780 | 780 | 780 | 770 | 765 | 755 |
| | C | Low | 780 | 790 | 795 | 805 | 800 | 800 | 795 | 805 | 795 |
| | D | Low | 875 | 885 | 890 | 890 | 890 | 890 | 885 | 880 | 875 |
| | A | High | 960 | 960 | 965 | 970 | 965 | 965 | 960 | 955 | 950 |
| | B | High | 1120 | 1115 | 1115 | 1115 | 1120 | 1115 | 1115 | 1110 | 1105 |
| | C | High | 1180 | 1180 | 1175 | 1175 | 1175 | 1175 | 1170 | 1165 | 1160 |
| | D | High | 1325 | 1320 | 1315 | 1315 | 1310 | 1310 | 1310 | 1305 | 1300 |
| AVPTC49C14B* | A | Low | 705 | 710 | 725 | 735 | 740 | 740 | 740 | 735 | 730 |
| | B | Low | 730 | 745 | 760 | 770 | 775 | 775 | 775 | 770 | 765 |
| | C | Low | 850 | 865 | 870 | 875 | 880 | 880 | 875 | 870 | 865 |
| | D | Low | 950 | 955 | 960 | 965 | 965 | 965 | 965 | 960 | 955 |
| | A | High | 1030 | 1040 | 1040 | 1045 | 1045 | 1045 | 1045 | 1040 | 1035 |
| | B | High | 1090 | 1095 | 1095 | 1095 | 1095 | 1095 | 1095 | 1090 | 1085 |
| | C | High | 1290 | 1290 | 1280 | 1285 | 1280 | 1280 | 1275 | 1275 | 1270 |
| | D | High | 1425 | 1425 | 1420 | 1420 | 1415 | 1410 | 1410 | 1405 | 1400 |
| AVPTC49D14B* | A | Low | 795 | 815 | 820 | 820 | 810 | 800 | 785 | 785 | 770 |
| | B | Low | 870 | 890 | 895 | 895 | 890 | 875 | 865 | 850 | 850 |
| | C | Low | 985 | 990 | 995 | 995 | 990 | 980 | 970 | 955 | 940 |
| | D | Low | 1040 | 1055 | 1055 | 1055 | 1045 | 1035 | 1025 | 1020 | 1005 |
| | A | High | 1195 | 1195 | 1195 | 1200 | 1195 | 1185 | 1175 | 1165 | 1155 |
| | B | High | 1325 | 1320 | 1320 | 1315 | 1315 | 1305 | 1295 | 1285 | 1275 |
| | C | High | 1460 | 1460 | 1455 | 1455 | 1455 | 1450 | 1440 | 1430 | 1420 |
| | D | High | 1520 | 1530 | 1530 | 1530 | 1530 | 1525 | 1515 | 1510 | 1495 |
| AVPTC59C14B* | A | Low | 635 | 620 | 610 | 600 | 600 | 600 | 600 | 600 | 600 |
| | B | Low | 790 | 805 | 810 | 810 | 805 | 805 | 795 | 810 | 800 |
| | C | Low | 930 | 940 | 940 | 935 | 930 | 925 | 920 | 915 | 905 |
| | D | Low | 1065 | 1065 | 1070 | 1065 | 1060 | 1050 | 1045 | 1035 | 1030 |
| | A | High | 870 | 880 | 875 | 875 | 870 | 865 | 860 | 860 | 845 |
| | B | High | 1230 | 1230 | 1225 | 1220 | 1210 | 1205 | 1200 | 1190 | 1180 |
| | C | High | 1420 | 1410 | 1410 | 1405 | 1395 | 1385 | 1380 | 1380 | 1370 |
| | D | High | 1615 | 1600 | 1595 | 1595 | 1585 | 1580 | 1570 | 1565 | 1555 |
| AVPTC59D14B* | A | Low | 1030 | 1035 | 1040 | 1040 | 1030 | 1025 | 1015 | 995 | 970 |
| | B | Low | 1260 | 1260 | 1260 | 1260 | 1260 | 1250 | 1245 | 1235 | 1225 |
| | C | Low | 1330 | 1335 | 1330 | 1330 | 1325 | 1320 | 1315 | 1305 | 1295 |
| | D | Low | 1395 | 1395 | 1395 | 1390 | 1390 | 1385 | 1375 | 1365 | 1355 |
| | A | High | 1450 | 1445 | 1445 | 1435 | 1430 | 1425 | 1420 | 1410 | 1395 |
| | B | High | 1795 | 1790 | 1790 | 1785 | 1775 | 1765 | 1760 | 1750 | 1745 |
| | C | High | 1890 | 1890 | 1890 | 1880 | 1870 | 1865 | 1855 | 1850 | 1840 |
| | D | High | 1995 | 1995 | 1990 | 1985 | 1985 | 1975 | 1965 | 1955 | 1945 |
| AVPTC61D14B* | A | Low | 1080 | 1085 | 1080 | 1085 | 1080 | 1075 | 1070 | 1065 | 1055 |
| | B | Low | 1200 | 1200 | 1210 | 1210 | 1210 | 1210 | 1205 | 1205 | 1200 |
| | C | Low | 1290 | 1290 | 1280 | 1275 | 1280 | 1280 | 1270 | 1265 | 1265 |
| | D | Low | 1360 | 1355 | 1350 | 1355 | 1350 | 1345 | 1340 | 1340 | 1330 |
| | A | High | 1630 | 1630 | 1630 | 1625 | 1620 | 1615 | 1610 | 1600 | 1590 |
| | B | High | 1820 | 1820 | 1820 | 1815 | 1805 | 1795 | 1785 | 1780 | 1770 |
| | C | High | 1935 | 1930 | 1925 | 1920 | 1905 | 1900 | 1890 | 1875 | 1865 |
| | D | High | 2035 | 2030 | 2025 | 2020 | 2005 | 1995 | 1985 | 1960 | 1955 |

Note: When applying a humidistat (normally closed), refer to the installation and operating instructions. The humidistat can adjust the cooling airflow to 85%.

| HEATER KIT MODEL | | CIRCUIT 1 | | | CIRCUIT 2 | | | SINGLE-POINT KIT | |
|---------------------|------------|-------------|------------------|------------------|-------------|------------------|------------------|------------------|------------------|
| | | HEATER AMPS | MCA ¹ | MOP ² | HEATER AMPS | MCA ¹ | MOP ² | MCA ¹ | MOP ² |
| AVPTC25B14B* | | 0/0 | 4.9/4.9 | 15/15 | --- | --- | --- | --- | --- |
| HKSX03XC- 208 V | No Breaker | 10.8 | 18.4 | 20 | --- | --- | --- | --- | --- |
| HKSX05XC- 208 V | | 17.3 | 27 | 30 | --- | --- | --- | --- | --- |
| HKSX06XC- 208 V | | 21.7 | 32 | 35 | --- | --- | --- | --- | --- |
| HKSX08XC- 208 V | | 28.9 | 41 | 45 | --- | --- | --- | --- | --- |
| HKSX10XC- 208 V | | 34.7 | 48 | 50 | --- | --- | --- | --- | --- |
| HKSC05XC- 208 V | Breaker | 17.3 | 27 | 30 | --- | --- | --- | --- | --- |
| HKSC08XC- 208 V | | 28.9 | 41 | 45 | --- | --- | --- | --- | --- |
| HKSC10XC- 208 V | | 34.7 | 48 | 50 | --- | --- | --- | --- | --- |
| HKSC15XA- 208 V | | 34.7 | 48 | 50 | 17.3 | 21.7 | 25 | 69.9 | 70 |
| HKSX03XC- 240 V | No Breaker | 12.5 | 21 | 25 | --- | --- | --- | --- | --- |
| HKSX05XC- 240 V | | 20 | 29.9 | 30 | --- | --- | --- | --- | --- |
| HKSX06XC- 240 V | | 25 | 36.1 | 40 | --- | --- | --- | --- | --- |
| HKSX08XC- 240 V | | 33.3 | 46.5 | 50 | --- | --- | --- | --- | --- |
| HKSX10XC- 240 V | | 40 | 54.9 | 60 | --- | --- | --- | --- | --- |
| HKSC05XC- 240 V | Breaker | 20 | 29.9 | 30 | --- | --- | --- | --- | --- |
| HKSC08XC- 240 V | | 33.3 | 46.5 | 50 | --- | --- | --- | --- | --- |
| HKSC10XC- 240 V | | 40 | 54.9 | 60 | --- | --- | --- | --- | --- |
| HKSC15XB- 240 V | | 40 | 54.9 | 60 | 20 | 25 | 25 | 79.9 | 80 |
| AVPTC29B14B* | | 0/0 | 6.5/6.5 | 15/15 | --- | --- | --- | --- | --- |
| HKSX03XC- 208 V | No Breaker | 10.8 | 20 | 20 | --- | --- | --- | --- | --- |
| HKSX05XC- 208 V | | 17.3 | 28.2 | 30 | --- | --- | --- | --- | --- |
| HKSX06XC- 208 V | | 21.7 | 33.6 | 35 | --- | --- | --- | --- | --- |
| HKSX08XC- 208 V | | 28.9 | 42.6 | 45 | --- | --- | --- | --- | --- |
| HKSX10XC- 208 V | | 34.7 | 49.8 | 50 | --- | --- | --- | --- | --- |
| HKSC05XC- 208 V | Breaker | 17.3 | 28.2 | 30 | --- | --- | --- | --- | --- |
| HKSC08XC- 208 V | | 28.9 | 42.6 | 45 | --- | --- | --- | --- | --- |
| HKSC10XC- 208 V | | 34.7 | 49.8 | 50 | --- | --- | --- | --- | --- |
| HKSC15XA- 208 V | | 34.7 | 49.8 | 50 | 17.3 | 21.7 | 25 | 71.5 | 80 |
| HKSX03XC- 240 V | No Breaker | 12.5 | 22.1 | 25 | --- | --- | --- | --- | --- |
| HKSX05XC- 240 V | | 20 | 32 | 35 | --- | --- | --- | --- | --- |
| HKSX06XC- 240 V | | 25 | 38 | 40 | --- | --- | --- | --- | --- |
| HKSX08XC- 240 V | | 33.3 | 48 | 50 | --- | --- | --- | --- | --- |
| HKSX10XC- 240 V | | 40 | 57 | 60 | --- | --- | --- | --- | --- |
| HKSC05XC- 240 V | Breaker | 20 | 32 | 35 | --- | --- | --- | --- | --- |
| HKSC08XC- 240 V | | 33.3 | 48 | 50 | --- | --- | --- | --- | --- |
| HKSC10XC- 240 V | | 40 | 57 | 60 | --- | --- | --- | --- | --- |
| HKSC15XB- 240 V | | 40 | 57 | 60 | 20 | 25 | 25 | 81.5 | 90 |
| AVPTC31C14B* | | 0/0 | 6.5/6.5 | 15/15 | --- | --- | --- | --- | --- |
| HKSX03XC- 208 V | No Breaker | 10.8 | 20 | 20 | --- | --- | --- | --- | --- |
| HKSX05XC- 208 V | | 17.3 | 28.2 | 30 | --- | --- | --- | --- | --- |
| HKSX06XC- 208 V | | 21.7 | 33.6 | 35 | --- | --- | --- | --- | --- |
| HKSX08XC- 208 V | | 28.9 | 42.6 | 45 | --- | --- | --- | --- | --- |
| HKSX10XC- 208 V | | 34.7 | 49.8 | 50 | --- | --- | --- | --- | --- |

See notes on page 14.

HEAT KIT DATA (CONT.)

| HEATER KIT MODEL | | CIRCUIT 1 | | | CIRCUIT 2 | | | SINGLE-POINT KIT | |
|---------------------|------------|-------------|------------------|------------------|-------------|------------------|------------------|------------------|------------------|
| | | HEATER AMPS | MCA ¹ | MOP ² | HEATER AMPS | MCA ¹ | MOP ² | MCA ¹ | MOP ² |
| HKSC05XC- 208 V | Breaker | 17.3 | 28.2 | 30 | --- | --- | --- | --- | --- |
| HKSC08XC- 208 V | | 28.9 | 42.6 | 45 | --- | --- | --- | --- | --- |
| HKSC10XC- 208 V | | 34.7 | 49.8 | 50 | --- | --- | --- | --- | --- |
| HKSC15XA- 208 V | | 34.7 | 49.8 | 50 | 17.3 | 21.7 | 25 | 71.5 | 80 |
| HKSC19CA- 208 V | | 34.7 | 49.8 | 50 | 34.7 | 43.3 | 45 | 93.2 | 100 |
| HKSC15XF- 208 V ^ | | 0 | 6.5 | 15 | 30 | 37.5 | 40 | --- | --- |
| HKSX03XC- 240 V | No Breaker | 12.5 | 22.1 | 25 | --- | --- | --- | --- | --- |
| HKSX05XC- 240 V | | 20 | 32 | 35 | --- | --- | --- | --- | --- |
| HKSX06XC- 240 V | | 25 | 38 | 40 | --- | --- | --- | --- | --- |
| HKSX08XC- 240 V | | 33.3 | 48 | 50 | --- | --- | --- | --- | --- |
| HKSX10XC- 240 V | | 40 | 57 | 60 | --- | --- | --- | --- | --- |
| HKSC05XC- 240 V | Breaker | 20 | 32 | 35 | --- | --- | --- | --- | --- |
| HKSC08XC- 240 V | | 33.3 | 48 | 50 | --- | --- | --- | --- | --- |
| HKSC10XC- 240 V | | 40 | 57 | 60 | --- | --- | --- | --- | --- |
| HKSC15XB- 240 V | | 40 | 56.5 | 60 | 20 | 25 | 25 | 81.5 | 90 |
| HKSC19CB- 240 V | | 40 | 56.5 | 60 | 40 | 50 | 50 | 107 | 110 |
| HKSC15XF- 240 V ^ | | 0 | 6.5 | 15 | 34.6 | 43 | 45 | --- | --- |
| AVPTC33C14B* | | 0.0/0.0 | 4.9/4.9 | 15/15 | --- | --- | --- | --- | --- |
| HKSX03XC- 208 V | No Breaker | 10.8 | 18.4 | 20 | --- | --- | --- | --- | --- |
| HKSX05XC- 208 V | | 17.3 | 27 | 30 | --- | --- | --- | --- | --- |
| HKSX06XC- 208 V | | 21.7 | 32 | 35 | --- | --- | --- | --- | --- |
| HKSX08XC- 208 V | | 28.9 | 41 | 45 | --- | --- | --- | --- | --- |
| HKSX10XC- 208 V | | 34.7 | 48 | 50 | --- | --- | --- | --- | --- |
| HKSC05XC- 208 V | Breaker | 17.3 | 27 | 30 | --- | --- | --- | --- | --- |
| HKSC08XC- 208 V | | 21.7 | 32 | 35 | --- | --- | --- | --- | --- |
| HKSC10XC- 208 V | | 28.9 | 41 | 45 | --- | --- | --- | --- | --- |
| HKSC15XA- 208 V | | 34.7 | 48 | 50 | 17.3 | 21.7 | 25 | 69.9 | 70 |
| HKSX03XC- 240 V | No Breaker | 12.5 | 21 | 25 | --- | --- | --- | --- | --- |
| HKSX05XC- 240 V | | 20 | 29.9 | 30 | --- | --- | --- | --- | --- |
| HKSX06XC- 240 V | | 25 | 36.1 | 40 | --- | --- | --- | --- | --- |
| HKSX08XC- 240 V | | 33.3 | 46.5 | 50 | --- | --- | --- | --- | --- |
| HKSX10XC- 240 V | | 40 | 54.9 | 60 | --- | --- | --- | --- | --- |
| HKSC05XC- 240 V | Breaker | 20 | 29.9 | 30 | --- | --- | --- | --- | --- |
| HKSC08XC- 240 V | | 33.3 | 46.5 | 50 | --- | --- | --- | --- | --- |
| HKSC10XC- 240 V | | 40 | 54.9 | 60 | --- | --- | --- | --- | --- |
| HKSC15XB- 240 V | | 40 | 54.9 | 60 | 20 | 25 | 25 | 79.9 | 80 |
| AVPTC35C14B* | | 0/0 | 4.9/4.9 | 15/15 | --- | --- | --- | --- | --- |
| HKSX03XC- 208 V | No Breaker | 10.8 | 18.4 | 20 | --- | --- | --- | --- | --- |
| HKSX05XC- 208 V | | 17.3 | 27 | 30 | --- | --- | --- | --- | --- |
| HKSX06XC- 208 V | | 21.7 | 32 | 35 | --- | --- | --- | --- | --- |
| HKSX08XC- 208 V | | 28.9 | 41 | 45 | --- | --- | --- | --- | --- |
| HKSX10XC- 208 V | | 34.7 | 48 | 50 | --- | --- | --- | --- | --- |

See notes on page 14.

| HEATER KIT MODEL | | CIRCUIT 1 | | | CIRCUIT 2 | | | SINGLE-POINT KIT | |
|---------------------|------------|-------------|------------------|------------------|-------------|------------------|------------------|------------------|------------------|
| | | HEATER AMPS | MCA ¹ | MOP ² | HEATER AMPS | MCA ¹ | MOP ² | MCA ¹ | MOP ² |
| HKSC05XC- 208 V | Breaker | 17.3 | 27 | 30 | --- | --- | --- | --- | --- |
| HKSC08XC- 208 V | | 28.9 | 41 | 45 | --- | --- | --- | --- | --- |
| HKSC10XC- 208 V | | 34.7 | 48 | 50 | --- | --- | --- | --- | --- |
| HKSC15XA- 208 V | | 34.7 | 48 | 50 | 17.3 | 21.7 | 25 | 69.9 | 70 |
| HKSX03XC- 240 V | No Breaker | 12.5 | 21 | 25 | --- | --- | --- | --- | --- |
| HKSX05XC- 240 V | | 20 | 29.9 | 30 | --- | --- | --- | --- | --- |
| HKSX06XC- 240 V | | 25 | 36.1 | 40 | --- | --- | --- | --- | --- |
| HKSX08XC- 240 V | | 33.3 | 46.5 | 50 | --- | --- | --- | --- | --- |
| HKSX10XC- 240 V | | 40 | 54.9 | 60 | --- | --- | --- | --- | --- |
| HKSC05XC- 240 V | Breaker | 20 | 29.9 | 30 | --- | --- | --- | --- | --- |
| HKSC08XC- 240 V | | 33.3 | 46.5 | 50 | --- | --- | --- | --- | --- |
| HKSC10XC- 240 V | | 40 | 54.9 | 60 | --- | --- | --- | --- | --- |
| HKSC15XB- 240 V | | 40 | 54.9 | 60 | 20 | 25 | 25 | 79.9 | 80 |
| AVPTC37B14B* | | 0/0 | 6.5/6.5 | 15/15 | --- | --- | --- | --- | --- |
| HKSX03XC- 208 V | No Breaker | 10.8 | 20 | 20 | --- | --- | --- | --- | --- |
| HKSX05XC- 208 V | | 17.3 | 28.2 | 30 | --- | --- | --- | --- | --- |
| HKSX06XC- 208 V | | 21.7 | 33.6 | 35 | --- | --- | --- | --- | --- |
| HKSX08XC- 208 V | | 28.9 | 42.6 | 45 | --- | --- | --- | --- | --- |
| HKSX10XC- 208 V | | 34.7 | 49.8 | 50 | --- | --- | --- | --- | --- |
| HKSC05XC- 208 V | Breaker | 17.3 | 28.2 | 30 | --- | --- | --- | --- | --- |
| HKSC08XC- 208 V | | 28.9 | 42.6 | 45 | --- | --- | --- | --- | --- |
| HKSC10XC- 208 V | | 34.7 | 49.8 | 50 | --- | --- | --- | --- | --- |
| HKSC15XA- 208 V | | 34.7 | 49.8 | 50 | 17.3 | 21.7 | 25 | 71.5 | 80 |
| HKSX03XC- 240 V | No Breaker | 12.5 | 22.1 | 25 | --- | --- | --- | --- | --- |
| HKSX05XC- 240 V | | 20 | 32 | 35 | --- | --- | --- | --- | --- |
| HKSX06XC- 240 V | | 25 | 38 | 40 | --- | --- | --- | --- | --- |
| HKSX08XC- 240 V | | 33.3 | 48 | 50 | --- | --- | --- | --- | --- |
| HKSX10XC- 240 V | | 40 | 57 | 60 | --- | --- | --- | --- | --- |
| HKSC05XC- 240 V | Breaker | 20 | 32 | 35 | --- | --- | --- | --- | --- |
| HKSC08XC- 240 V | | 33.3 | 48 | 50 | --- | --- | --- | --- | --- |
| HKSC10XC- 240 V | | 40 | 57 | 60 | --- | --- | --- | --- | --- |
| HKSC15XB- 240 V | | 40 | 57 | 60 | 20 | 25 | 25 | 81.5 | 90 |
| AVPTC37C14B* | | 0/0 | 6.5/6.5 | 15/15 | --- | --- | --- | --- | --- |
| HKSX03XC- 208 V | No Breaker | --- | --- | --- | --- | --- | --- | --- | --- |
| HKSX05XC- 208 V | | 17.3 | 28.2 | 30 | --- | --- | --- | --- | --- |
| HKSX06XC- 208 V | | 21.7 | 33.6 | 35 | --- | --- | --- | --- | --- |
| HKSX08XC- 208 V | | 28.9 | 42.6 | 45 | --- | --- | --- | --- | --- |
| HKSX10XC- 208 V | | 34.7 | 49.8 | 50 | --- | --- | --- | --- | --- |
| HKSC05XC- 208 V | Breaker | 17.3 | 28.2 | 30 | --- | --- | --- | --- | --- |
| HKSC08XC- 208 V | | 28.9 | 42.6 | 45 | --- | --- | --- | --- | --- |
| HKSC10XC- 208 V | | 34.7 | 49.8 | 50 | --- | --- | --- | --- | --- |
| HKSC15XA- 208 V | | 34.7 | 49.8 | 50 | 17.3 | 21.7 | 25 | 71.5 | 80 |
| HKSC19CA- 208 V | | 34.7 | 49.8 | 50 | 34.7 | 43.3 | 45 | 93.2 | 100 |
| HKSC15XF- 208 V ^ | | 0 | 6.5 | 15 | 30 | 37.5 | 40 | --- | --- |

See notes on page 14.

HEAT KIT DATA (CONT.)

| HEATER KIT MODEL | | CIRCUIT 1 | | | CIRCUIT 2 | | | SINGLE-POINT KIT | |
|---------------------|------------|-------------|------------------|------------------|-------------|------------------|------------------|------------------|------------------|
| | | HEATER AMPS | MCA ¹ | MOP ² | HEATER AMPS | MCA ¹ | MOP ² | MCA ¹ | MOP ² |
| HKXS03XC- 240 V | No Breaker | --- | --- | --- | --- | --- | --- | --- | --- |
| HKXS05XC- 240 V | | 20 | 32 | 35 | --- | --- | --- | --- | --- |
| HKXS06XC- 240 V | | 25 | 38 | 40 | --- | --- | --- | --- | --- |
| HKXS08XC- 240 V | | 33.3 | 48 | 50 | --- | --- | --- | --- | --- |
| HKXS10XC- 240 V | | 40 | 57 | 60 | --- | --- | --- | --- | --- |
| HKSC05XC- 240 V | Breaker | 20 | 32 | 35 | --- | --- | --- | --- | --- |
| HKSC08XC- 240 V | | 33.3 | 48 | 50 | --- | --- | --- | --- | --- |
| HKSC10XC- 240 V | | 40 | 57 | 60 | --- | --- | --- | --- | --- |
| HKSC15XB- 240 V | | 40 | 57 | 60 | 20 | 25 | 25 | 81.5 | 90 |
| HKSC19CB- 240 V | | 40 | 57 | 60 | 40 | 50 | 50 | 106.5 | 110 |
| HKSC15XF- 240 V ^ | | 0 | 6.5 | 15 | 34.6 | 43 | 45 | --- | --- |
| AVPTC37D14B* | | 0/0 | 6.5/6.5 | 15/15 | --- | --- | --- | --- | --- |
| HKXS03XC- 208 V | No Breaker | --- | --- | --- | --- | --- | --- | --- | --- |
| HKXS05XC- 208 V | | 17.3 | 28.2 | 30 | --- | --- | --- | --- | --- |
| HKXS06XC- 208 V | | 21.7 | 33.6 | 35 | --- | --- | --- | --- | --- |
| HKXS08XC- 208 V | | 28.9 | 42.6 | 45 | --- | --- | --- | --- | --- |
| HKXS10XC- 208 V | | 34.7 | 49.8 | 50 | --- | --- | --- | --- | --- |
| HKSC05XC- 208 V | Breaker | 17.3 | 28.2 | 30 | --- | --- | --- | --- | --- |
| HKSC08XC- 208 V | | 28.9 | 42.6 | 45 | --- | --- | --- | --- | --- |
| HKSC10XC- 208 V | | 34.7 | 49.8 | 50 | --- | --- | --- | --- | --- |
| HKSC15XA- 208 V | | 34.7 | 49.8 | 50 | 17.3 | 21.7 | 25 | 71.5 | 80 |
| HKSC20DA- 208 V | | 34.7 | 49.8 | 50 | 34.7 | 43.3 | 45 | 93.2 | 100 |
| HKSC15XF- 208 V ^ | | 0 | 6.5 | 15 | 30 | 37.5 | 40 | --- | --- |
| HKSC20XF- 208 V ^ | 0 | 6.5 | 15 | 37.5 | 47 | 50 | --- | --- | |
| HKXS03XC- 240 V | No Breaker | --- | --- | --- | --- | --- | --- | --- | --- |
| HKXS05XC- 240 V | | 20 | 32 | 35 | --- | --- | --- | --- | --- |
| HKXS06XC- 240 V | | 25 | 38 | 40 | --- | --- | --- | --- | --- |
| HKXS08XC- 240 V | | 33.3 | 48 | 50 | --- | --- | --- | --- | --- |
| HKXS10XC- 240 V | | 40 | 57 | 60 | --- | --- | --- | --- | --- |
| HKSC05XC- 240 V | Breaker | 20 | 32 | 35 | --- | --- | --- | --- | --- |
| HKSC08XC- 240 V | | 33.3 | 48 | 50 | --- | --- | --- | --- | --- |
| HKSC10XC- 240 V | | 40 | 57 | 60 | --- | --- | --- | --- | --- |
| HKSC15XB- 240 V | | 40 | 57 | 60 | 20 | 25 | 25 | 81.5 | 90 |
| HKSC20DB- 240 V | | 40 | 57 | 60 | 40 | 50 | 50 | 106.5 | 110 |
| HKSC15XF- 240 V ^ | | 0 | 6.5 | 15 | 34.6 | 43 | 45 | --- | --- |
| HKSC20XF- 240 V ^ | 0 | 6.5 | 15 | 43 | 54 | 60 | --- | --- | |
| AVPTC39C14B* | | 0.0/0.0 | 6.5/6.5 | 15/15 | --- | --- | --- | --- | --- |
| HKXS03XC- 208 V | No Breaker | --- | --- | --- | --- | --- | --- | --- | --- |
| HKXS05XC- 208 V | | 17.3 | 28.2 | 30 | --- | --- | --- | --- | --- |
| HKXS06XC- 208 V | | 21.7 | 33.6 | 35 | --- | --- | --- | --- | --- |
| HKXS08XC- 208 V | | 28.9 | 42.6 | 45 | --- | --- | --- | --- | --- |
| HKXS10XC- 208 V | | 34.7 | 49.8 | 50 | --- | --- | --- | --- | --- |

See notes on page 14.

| HEATER KIT MODEL | | CIRCUIT 1 | | | CIRCUIT 2 | | | SINGLE-POINT KIT | |
|---------------------|------------|-------------|------------------|------------------|-------------|------------------|------------------|------------------|------------------|
| | | HEATER AMPS | MCA ¹ | MOP ² | HEATER AMPS | MCA ¹ | MOP ² | MCA ¹ | MOP ² |
| HKSC05XC- 208 V | Breaker | 17.3 | 28.2 | 30 | --- | --- | --- | --- | --- |
| HKSC08XC- 208 V | | 28.9 | 42.6 | 45 | --- | --- | --- | --- | --- |
| HKSC10XC- 208 V | | 34.7 | 49.8 | 50 | --- | --- | --- | --- | --- |
| HKSC15XA- 208 V | | 34.7 | 49.8 | 50 | 17.3 | 21.7 | 25 | 71.5 | 80 |
| HKSC19CA- 208 V | | 34.7 | 49.8 | 50 | 34.7 | 43.3 | 45 | 93.2 | 100 |
| HKSC15XF- 208 V ^ | | 0 | 6.5 | 15 | 30 | 37.5 | 40 | --- | --- |
| HKSX03XC- 240 V | No Breaker | --- | --- | --- | --- | --- | --- | --- | --- |
| HKSX05XC- 240 V | | 20 | 32 | 35 | --- | --- | --- | --- | --- |
| HKSX06XC- 240 V | | 25 | 38 | 40 | --- | --- | --- | --- | --- |
| HKSX08XC- 240 V | | 33.3 | 48 | 50 | --- | --- | --- | --- | --- |
| HKSX10XC- 240 V | | 40 | 57 | 60 | --- | --- | --- | --- | --- |
| HKSC05XC- 240 V | Breaker | 20 | 32 | 35 | --- | --- | --- | --- | --- |
| HKSC08XC- 240 V | | 33.3 | 48 | 50 | --- | --- | --- | --- | --- |
| HKSC10XC- 240 V | | 40 | 57 | 60 | --- | --- | --- | --- | --- |
| HKSC15XB- 240 V | | 40 | 57 | 60 | 20 | 25 | 25 | 81.5 | 90 |
| HKSC19CB- 240 V | | 40 | 57 | 60 | 40 | 50 | 50 | 106.5 | 110 |
| HKSC15XF- 240 V ^ | | 0 | 6.5 | 15 | 34.6 | 43 | 45 | --- | --- |
| AVPTC49C14B* | | 0.0/0.0 | 6.5/6.5 | 15/15 | --- | --- | --- | --- | --- |
| HKSX03XC- 208 V | No Breaker | --- | --- | --- | --- | --- | --- | --- | --- |
| HKSX05XC- 208 V | | 17.3 | 28.2 | 30 | --- | --- | --- | --- | --- |
| HKSX06XC- 208 V | | 21.7 | 33.6 | 35 | --- | --- | --- | --- | --- |
| HKSX08XC- 208 V | | 28.9 | 42.6 | 45 | --- | --- | --- | --- | --- |
| HKSX10XC- 208 V | | 34.7 | 49.8 | 50 | --- | --- | --- | --- | --- |
| HKSC05XC- 208 V | Breaker | 17.3 | 28.2 | 30 | --- | --- | --- | --- | --- |
| HKSC08XC- 208 V | | 28.9 | 42.6 | 45 | --- | --- | --- | --- | --- |
| HKSC10XC- 208 V | | 34.7 | 49.8 | 50 | --- | --- | --- | --- | --- |
| HKSC15XA- 208 V | | 34.7 | 49.8 | 50 | 17.3 | 21.7 | 25 | 71.5 | 80 |
| HKSC19CA- 208 V | | 34.7 | 49.8 | 50 | 34.7 | 43.3 | 45 | 93.2 | 100 |
| HKSC15XF- 208 V ^ | | 0 | 6.5 | 15 | 30 | 37.5 | 40 | --- | --- |
| HKSX03XC- 240 V | No Breaker | --- | --- | --- | --- | --- | --- | --- | --- |
| HKSX05XC- 240 V | | 20 | 32 | 35 | --- | --- | --- | --- | --- |
| HKSX06XC- 240 V | | 25 | 38 | 40 | --- | --- | --- | --- | --- |
| HKSX08XC- 240 V | | 33.3 | 48 | 50 | --- | --- | --- | --- | --- |
| HKSX10XC- 240 V | | 40 | 57 | 60 | --- | --- | --- | --- | --- |
| HKSC05XC- 240 V | Breaker | 20 | 32 | 35 | --- | --- | --- | --- | --- |
| HKSC08XC- 240 V | | 33.3 | 48 | 50 | --- | --- | --- | --- | --- |
| HKSC10XC- 240 V | | 40 | 57 | 60 | --- | --- | --- | --- | --- |
| HKSC15XB- 240 V | | 40 | 57 | 60 | 20 | 25 | 25 | 81.5 | 90 |
| HKSC19CB- 240 V | | 40 | 57 | 60 | 40 | 50 | 50 | 106.5 | 110 |
| HKSC15XF- 240 V ^ | | 0 | 6.5 | 15 | 34.6 | 43 | 45 | --- | --- |

See notes on page 14.

HEAT KIT DATA (CONT.)

| HEATER KIT MODEL | | CIRCUIT 1 | | | CIRCUIT 2 | | | SINGLE-POINT KIT | |
|-------------------------------|------------|-------------|------------------|------------------|-------------|------------------|------------------|------------------|------------------|
| | | HEATER AMPS | MCA ¹ | MOP ² | HEATER AMPS | MCA ¹ | MOP ² | MCA ¹ | MOP ² |
| AVPTC49D14B* | | 0/0 | 6.5/6.5 | 15/15 | --- | --- | --- | --- | --- |
| HKX03XC- 208 V | No Breaker | --- | --- | --- | --- | --- | --- | --- | --- |
| HKX05XC- 208 V | | 17.3 | 28.2 | 30 | --- | --- | --- | --- | --- |
| HKX06XC- 208 V | | 21.7 | 33.6 | 35 | --- | --- | --- | --- | --- |
| HKX08XC- 208 V | | 28.9 | 42.6 | 45 | --- | --- | --- | --- | --- |
| HKX10XC- 208 V | | 34.7 | 49.8 | 50 | --- | --- | --- | --- | --- |
| HKSC05XC- 208 V | Breaker | 17.3 | 28.2 | 30 | --- | --- | --- | --- | --- |
| HKSC08XC- 208 V | | 28.9 | 42.6 | 45 | --- | --- | --- | --- | --- |
| HKSC10XC- 208 V | | 34.7 | 49.8 | 50 | --- | --- | --- | --- | --- |
| HKSC15XA- 208 V | | 34.7 | 49.8 | 50 | 17.3 | 21.7 | 25 | 71.5 | 80 |
| HKSC20DA- 208 V | | --- | --- | --- | --- | --- | --- | --- | --- |
| HKSC15XF- 208 V ^ | | --- | --- | --- | --- | --- | --- | --- | --- |
| HKSC20XF- 208 V ^ | | --- | --- | --- | --- | --- | --- | --- | --- |
| HKSC25DA- 208 V | --- | --- | --- | --- | --- | --- | --- | --- | |
| HKX03XC- 240 V | No Breaker | --- | --- | --- | --- | --- | --- | --- | --- |
| HKX05XC- 240 V | | 20 | 32 | 35 | --- | --- | --- | --- | --- |
| HKX06XC- 240 V | | 25 | 38 | 40 | --- | --- | --- | --- | --- |
| HKX08XC- 240 V | | 33.3 | 48 | 50 | --- | --- | --- | --- | --- |
| HKX10XC- 240 V | | 40 | 57 | 60 | --- | --- | --- | --- | --- |
| HKSC05XC- 240 V | Breaker | 20 | 32 | 35 | --- | --- | --- | --- | --- |
| HKSC08XC- 240 V | | 33.3 | 48 | 50 | --- | --- | --- | --- | --- |
| HKSC10XC- 240 V | | 40 | 57 | 60 | --- | --- | --- | --- | --- |
| HKSC15XB- 240 V | | 40 | 57 | 60 | 20 | 25 | 25 | 81.5 | 90 |
| HKSC20DB- 240 V | | --- | --- | --- | --- | --- | --- | --- | --- |
| HKSC15XF- 240 V ^ | | --- | --- | --- | --- | --- | --- | --- | --- |
| HKSC20XF- 240 V ^ | | --- | --- | --- | --- | --- | --- | --- | --- |
| HKSC25DB- 240 V | --- | --- | --- | --- | --- | --- | --- | --- | |
| AVPTC59C14B* | | 0/0 | 8.6/8.6 | 15/15 | --- | --- | --- | --- | --- |
| HKX03XC- 208 V | No Breaker | --- | --- | --- | --- | --- | --- | --- | --- |
| HKX05XC- 208 V | | 17.3 | 30.3 | 35 | --- | --- | --- | --- | --- |
| HKX06XC- 208 V | | 21.7 | 36 | 40 | --- | --- | --- | --- | --- |
| HKX08XC- 208 V | | 28.9 | 45 | 45 | --- | --- | --- | --- | --- |
| HKX10XC- 208 V | | 34.7 | 52 | 60 | --- | --- | --- | --- | --- |
| HKSC05XC- 208 V | Breaker | 17.3 | 30.3 | 35 | --- | --- | --- | --- | --- |
| HKSC08XC- 208 V | | 28.9 | 45 | 45 | --- | --- | --- | --- | --- |
| HKSC10XC- 208 V | | 34.7 | 52 | 60 | --- | --- | --- | --- | --- |
| HKSC15XB ³ - 208 V | | 34.7 | 52 | 60 | 17.3 | 21.7 | 25 | 73.6 | 80 |
| HKSC19CH- 208 V | | 34.7 | 52 | 60 | 34.7 | 43.3 | 45 | 95.3 | 100 |
| HKSC15XF- 208 V ^ | | 0 | 8.6 | 15 | 30 | 37.5 | 40 | --- | --- |
| HKSC20XF- 208 V ^ | | --- | --- | --- | --- | --- | --- | --- | --- |

See notes on page 14.

| HEATER KIT MODEL | | CIRCUIT 1 | | | CIRCUIT 2 | | | SINGLE-POINT KIT | |
|-------------------------------|------------|-------------|------------------|------------------|-------------|------------------|------------------|------------------|------------------|
| | | HEATER AMPS | MCA ¹ | MOP ² | HEATER AMPS | MCA ¹ | MOP ² | MCA ¹ | MOP ² |
| HKSX03XC- 240 V | No Breaker | --- | --- | --- | --- | --- | --- | --- | --- |
| HKSX05XC- 240 V | | 20 | 34 | 35 | --- | --- | --- | --- | --- |
| HKSX06XC- 240 V | | 25 | 39.9 | 40 | --- | --- | --- | --- | --- |
| HKSX08XC- 240 V | | 33.3 | 50.3 | 60 | --- | --- | --- | --- | --- |
| HKSX10XC- 240 V | | 40 | 58.6 | 60 | --- | --- | --- | --- | --- |
| HKSC05XC- 240 V | Breaker | 20 | 34 | 35 | --- | --- | --- | --- | --- |
| HKSC08XC- 240 V | | 33.3 | 50.3 | 60 | --- | --- | --- | --- | --- |
| HKSC10XC- 240 V | | 40 | 58.6 | 60 | --- | --- | --- | --- | --- |
| HKSC15XB- 240 V | | 40 | 58.6 | 60 | 20 | 25 | 25 | 83.6 | 90 |
| HKSC19CB- 240 V | | 40 | 58.6 | 60 | 40 | 50 | 50 | 108.6 | 110 |
| HKSC15XF- 240 V ^ | | 0 | 8.6 | 15 | 34.6 | 43 | 45 | --- | --- |
| HKSC20XF- 240 V ^ | | --- | --- | --- | --- | --- | --- | --- | --- |
| AVPTC59D14B* | | 0/0 | 8.6/8.6 | 15/15 | --- | --- | --- | --- | --- |
| HKSX03XC- 208 V | No Breaker | --- | --- | --- | --- | --- | --- | --- | --- |
| HKSX06XC- 208 V | | 21.7 | 36 | 40 | --- | --- | --- | --- | --- |
| HKSX08XC- 208 V | | 28.9 | 45 | 45 | --- | --- | --- | --- | --- |
| HKSX10XC- 208 V | | 34.7 | 52 | 60 | --- | --- | --- | --- | --- |
| HKSC05XC- 208 V | Breaker | 17.3 | 30.3 | 35 | --- | --- | --- | --- | --- |
| HKSC08XC- 208 V | | 28.9 | 45 | 45 | --- | --- | --- | --- | --- |
| HKSC10XC- 208 V | | 34.7 | 52 | 60 | --- | --- | --- | --- | --- |
| HKSC15XB ³ - 208 V | | 34.7 | 52 | 60 | 17.3 | 21.7 | 25 | 73.6 | 80 |
| HKSC20DH- 208 V | | 34.7 | 52 | 60 | 34.7 | 43.3 | 45 | 95.3 | 100 |
| HKSC15XF- 208 V ^ | | 0 | 8.6 | 15 | 30 | 37.5 | 40 | --- | --- |
| HKSC20XF- 208 V ^ | | 0 | 8.6 | 15 | 37.5 | 47 | 50 | --- | --- |
| HKSX03XC- 240 V | No Breaker | --- | --- | --- | --- | --- | --- | --- | --- |
| HKSX05XC- 240 V | | 20 | 34 | 35 | --- | --- | --- | --- | --- |
| HKSX06XC- 240 V | | 25 | 39.9 | 40 | --- | --- | --- | --- | --- |
| HKSX08XC- 240 V | | 33.3 | 50.3 | 60 | --- | --- | --- | --- | --- |
| HKSX10XC- 240 V | | 40 | 58.6 | 60 | --- | --- | --- | --- | --- |
| HKSC05XC- 240 V | Breaker | 20 | 34 | 35 | --- | --- | --- | --- | --- |
| HKSC08XC- 240 V | | 33.3 | 50.3 | 60 | --- | --- | --- | --- | --- |
| HKSC10XC- 240 V | | 40 | 58.6 | 60 | --- | --- | --- | --- | --- |
| HKSC15XB- 240 V | | 40 | 58.6 | 60 | 20 | 25 | 25 | 83.6 | 90 |
| HKSC20DB- 240 V | | 40 | 58.6 | 60 | 40 | 50 | 50 | 108.6 | 110 |
| HKSC15XF- 240 V ^ | | 0 | 8.6 | 15 | 34.6 | 43 | 45 | --- | --- |
| HKSC20XF- 240 V ^ | | 0 | 8.6 | 15 | 43 | 54 | 60 | --- | --- |
| AVPTC61D14B* | | 0/0 | 8.6/8.6 | 15/15 | --- | --- | --- | --- | --- |
| HKSX03XC- 208 V | No Breaker | --- | --- | --- | --- | --- | --- | --- | --- |
| HKSX05XC- 208 V | | 17.3 | 30.3 | 35 | --- | --- | --- | --- | --- |
| HKSX06XC- 208 V | | 21.7 | 36 | 40 | --- | --- | --- | --- | --- |
| HKSX08XC- 208 V | | 28.9 | 45 | 45 | --- | --- | --- | --- | --- |
| HKSX10XC- 208 V | | 34.7 | 52 | 60 | --- | --- | --- | --- | --- |

See notes on page 14.

HEAT KIT DATA (CONT.)

| HEATER KIT MODEL | | CIRCUIT 1 | | | CIRCUIT 2 | | | SINGLE-POINT KIT | |
|-------------------------------|------------|-------------|------------------|------------------|-------------|------------------|------------------|------------------|------------------|
| | | HEATER AMPS | MCA ¹ | MOP ² | HEATER AMPS | MCA ¹ | MOP ² | MCA ¹ | MOP ² |
| HKSC05XC- 208 V | Breaker | 17.3 | 30.3 | 35 | --- | --- | --- | --- | --- |
| HKSC08XC- 208 V | | 28.9 | 45 | 45 | --- | --- | --- | --- | --- |
| HKSC10XC- 208 V | | 34.7 | 52 | 60 | --- | --- | --- | --- | --- |
| HKSC15XB ³ - 208 V | | 34.7 | 52 | 60 | 17.3 | 21.7 | 25 | 73.6 | 80 |
| HKSC20DH- 208 V | | 34.7 | 52 | 60 | 34.7 | 43.3 | 45 | 95.3 | 100 |
| HKSC15XF- 208 V ^ | | 0 | 8.6 | 15 | 30 | 37.5 | 40 | --- | --- |
| HKSC20XF- 208 V ^ | | 0 | 8.6 | 15 | 37.5 | 47 | 50 | --- | --- |
| HKSC25DA- 208 V | | 52 | 73.6 | 80 | 34.7 | 43.3 | 45 | 117 | 125 |
| HKSX03XC- 240 V | No Breaker | --- | --- | --- | --- | --- | --- | --- | --- |
| HKSX05XC- 240 V | | 20 | 34 | 35 | --- | --- | --- | --- | --- |
| HKSX06XC- 240 V | | 25 | 39.9 | 40 | --- | --- | --- | --- | --- |
| HKSX08XC- 240 V | | 33.3 | 50.3 | 60 | --- | --- | --- | --- | --- |
| HKSX10XC- 240 V | | 40 | 58.6 | 60 | --- | --- | --- | --- | --- |
| HKSC05XC- 240 V | Breaker | 20 | 34 | 35 | --- | --- | --- | --- | --- |
| HKSC08XC- 240 V | | 33.3 | 50.3 | 60 | --- | --- | --- | --- | --- |
| HKSC10XC- 240 V | | 40 | 58.6 | 60 | --- | --- | --- | --- | --- |
| HKSC15XB- 240 V | | 40 | 58.6 | 60 | 20 | 25 | 25 | 83.6 | 90 |
| HKSC20DB- 240 V | | 40 | 58.6 | 60 | 40 | 50 | 50 | 108.6 | 110 |
| HKSC15XF- 240 V ^ | | 0 | 8.6 | 15 | 34.6 | 43 | 45 | --- | --- |
| HKSC20XF- 240 V ^ | | 0 | 8.6 | 15 | 43 | 54 | 60 | --- | --- |
| HKSC25DB- 240 V | | 60 | 84 | 90 | 40 | 50 | 50 | 133.6 | 150 |

¹ Minimum Circuit Ampacity (Heater Amps + Motor Amps) X 1.25

² Maximum Overcurrent Protection = 2.25 X Motor Amps + Heater Amps

[^] Circuit 1: Single-phase for Air Handlers Circuit 2: Three-phase for HKR3 Heater Kits

Note: The 208 or 240 in the heat kit part number field is for clarification of the nominal voltage for this model.

³Notation is correct as XB because technically the 240V heater kit application can be used here without any issues.

| ELECTRIC HEAT AIRFLOW TABLE | | | | | | | | | | | |
|-----------------------------|------------|------------|--------------------------|------------|------------|--------------------------|--------------------------|------------|------------------|------------|------------------|
| HTR KW | AVPTC25B14 | AVPTC29B14 | AVPTC29B14 AVPTC29B14 | AVPTC31C14 | AVPTC31C14 | AVPTC37C14 AVPTC39C14 | AVPTC49C14 AVPTC59C14 | AVPTC37D14 | AVPTC49D14 ++ | AVPTC59D14 | AVPTC61D14 ++ |
| 3 | 550 | 550 | 550 | 600 | 600 | NR | NR | NR | NR | NR | NR |
| 5 | 650 | 650 | 650 | 700 | 700 | 700 | 800 | 870 | 950 | 990 | 1030 |
| 6 | 700 | 700 | 700 | 770 | 750 | 770 | 800 | 970 | 1060 | 1110 | 1150 |
| 8 | 800 | 800 | 800 | 880 | 850 | 880 | 950 | 1060 | 1150 | 1200 | 1250 |
| 10 | 850 | 850 | 850 | 970 | 920 | 970 | 1090 | 1120 | 1220 | 1240 | 1320 |
| 15 | 875 | 875 | 875 | 1090 | 950 | 1090 | 1290 | 1220 | 1520 | 1520 | 1650 |
| 19 | NR | NR | 1050 | 1280 | NR | 1280 | 1345 | NR | NR | NR | NR |
| 20 | NR | NR | NR | NR | NR | NR | NR | 1250 | NR | 1520 | 1690 |
| 21 | NR | NR | NR | NR | NR | NR | NR | NR | NR | NR | NR |
| 25 | NR | NR | NR | NR | NR | NR | NR | NR | NR | NR | 1750 |

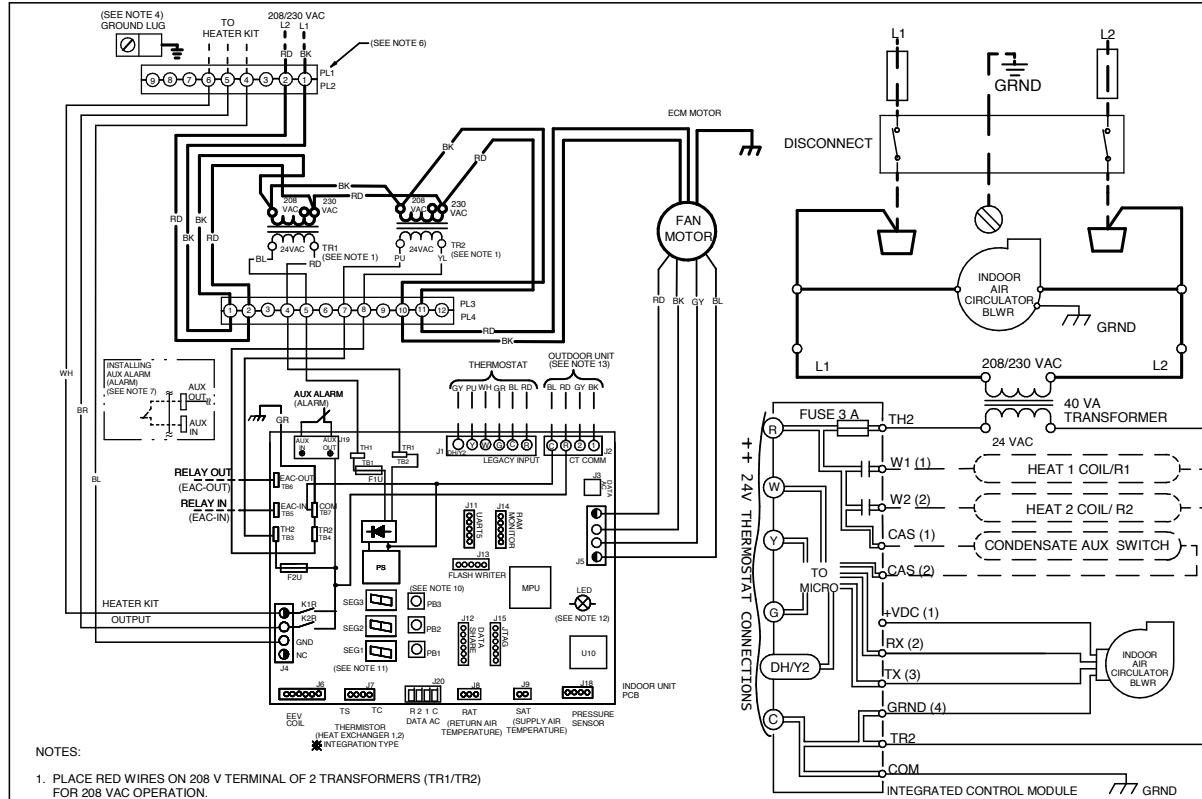
Selecting Heater Kit: Use the Electric Heating Wattage Menu (EHT) to select heater kit size. See "Menu Navigation and Selection Instructions" in Installation Manual. Default selection is 0 (No Heat Kit). Select installed heater kit for heater kit operation.

NR- Not Rated

++ For match up with a 3 ton outdoor unit: Airflow for 5kW up to 15kW heater kits shall be set to 1220 CFM by selecting 10 in the Electric Heating Wattage (EHT) menu.

+++ For match up with a 3.5 ton outdoor unit: Heater kit application shall not exceed 20 kW. Airflow for 5kW up to 20kW heater kits shall be set to 1320 CFM by selecting 10 in the Electric Heating Wattage (EHT) menu.

WIRING DIAGRAM – AIR HANDLER



NOTES:

1. PLACE RED WIRES ON 208 V TERMINAL OF 2 TRANSFORMERS (TR1/TR2) FOR 208 VAC OPERATION.
2. MANUFACTURER'S SPECIFIED REPLACEMENT PARTS MUST BE USED WHEN SERVICING.
3. IF ANY OF THE ORIGINAL WIRES AS SUPPLIED WITH THIS UNIT MUST BE REPLACED, IT MUST BE REPLACED WITH WIRING MATERIAL HAVING A TEMPERATURE RATING OF AT LEAST 105°C. USE COPPER CONDUCTORS ONLY.
4. UNIT MUST BE PERMANENTLY GROUNDING AND CONFORM TO N.E.C AND LOCAL CODES.
6. DISCARD CONNECTOR PL1 WHEN INSTALLING OPTIONAL HEAT KIT.
7. REMOVE JUMPER TAB AND PUT AUX ALARM SWITCH WHEN INSTALLING AUX ALARM SWITCH.
9. USE N.E.C CLASS 2 WIRE.
10. SEE MANUAL FOR PUSH BUTTON OPERATION.
11. SEE MANUAL FOR 7-SEGMENT DISPLAY DIAGNOSTIC CODES AND MENU CODES
12. SEE MANUAL FOR LED FUNCTIONALITY.
13. R AND C TERMINALS (USED FOR 24VAC OUTDOOR CONTROL VOLTAGE) ARE OPTIONAL FOR 2 STAGE COMMUNICATING AIR CONDITIONERS. R AND C TERMINALS ARE NOT TO BE USED FOR 2 STAGE COMMUNICATING HEAT PUMP APPLICATIONS.

FOR COMMUNICATING HEAT PUMPS OR IF ONLY TWO THERMOSTAT WIRES ARE AVAILABLE, A SEPARATE TRANSFORMER MUST BE INSTALLED IN THE OUTDOOR UNIT FOR CONTROL BOARD POWER.

1 AND 2 WIRES ARE REQUIRED FOR ALL APPLICATIONS. SEE INSTALLATION MANUAL FOR FULL SYSTEM WIRING EXAMPLES.

INTEGRATED CONTROL:

- LOW VOLTAGE ———
- LOW VOLTAGE FIELD — — —
- HIGH VOLTAGE ———
- HIGH VOLTAGE FIELD - - - -
- JUNCTION —+—
- TERMINAL —○—
- INTERNAL TO ———
- RESISTOR —□—
- OVERCURRENT PROT. DEVICE —||—
- PLUG CONNECTION —□—
- EQUIPMENT GND —⎓—
- FIELD GROUND —⎓—

COLOR CODES:

- BL - BLUE
- RD - RED
- YL - YELLOW
- OR - ORANGE
- BK - BLACK
- GY - GREY
- BR - BROWN
- GR - GREEN
- PU - PURPLE
- WH - WHITE

COMPONENT CODES:

- PL1, PL2 — POWER/HEATER CONNECTOR
- TL — THERMAL LIMIT
- TR — TRANSFORMER
- F1U, F2U — FUSE LINK
- PL3, PL4 — TRANSFORMER CONNECTOR

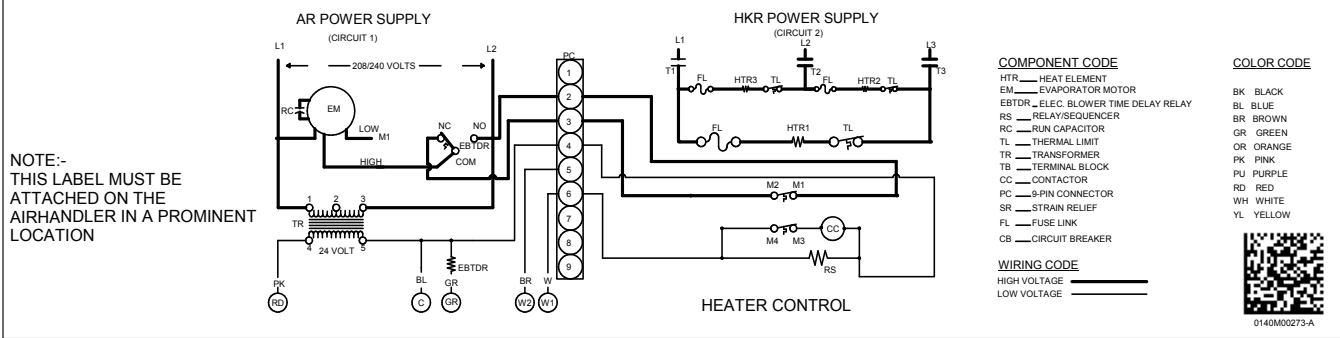
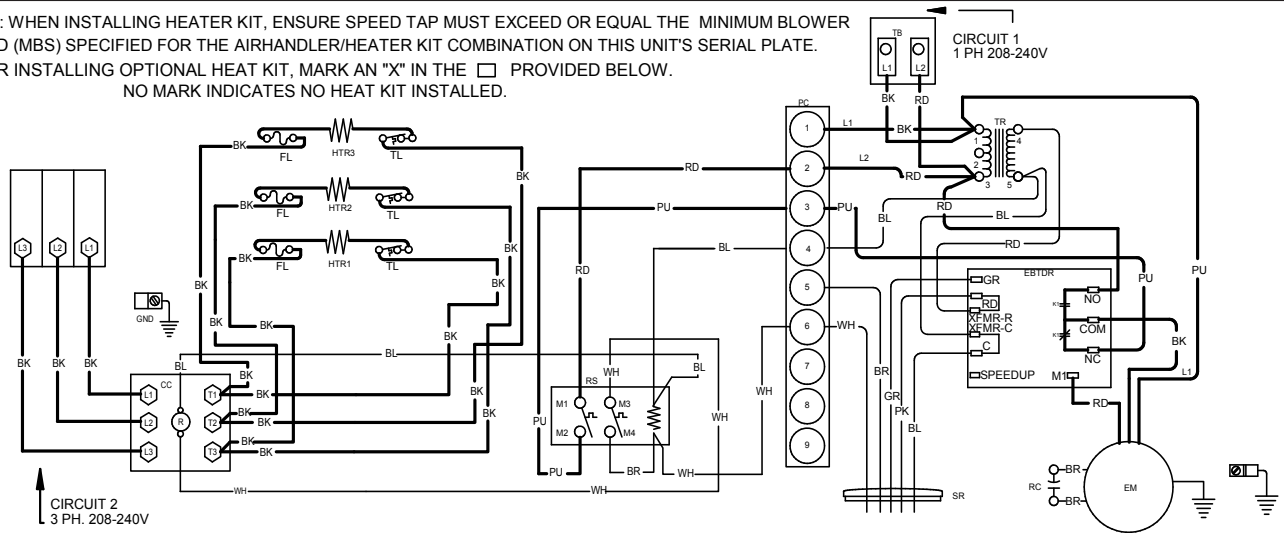


0140A00613-B

Wiring is subject to change. Always refer to the wiring diagram on the unit for the most up-to-date wiring.

| | | |
|--|-----------------------|--|
| | <p>WARNING</p> | <p>High Voltage: Disconnect all power before servicing or installing this unit. Multiple power sources may be present. Failure to do so may cause property damage, personal injury, or death.</p> |
|--|-----------------------|--|

NOTE: WHEN INSTALLING HEATER KIT, ENSURE SPEED TAP MUST EXCEED OR EQUAL THE MINIMUM BLOWER SPEED (MBS) SPECIFIED FOR THE AIRHANDLER/HEATER KIT COMBINATION ON THIS UNIT'S SERIAL PLATE. AFTER INSTALLING OPTIONAL HEAT KIT, MARK AN "X" IN THE PROVIDED BELOW. NO MARK INDICATES NO HEAT KIT INSTALLED.



Wiring is subject to change. Always refer to the wiring diagram on the unit for the most up-to-date wiring.

| | | | |
|--|----------------|--|--|
| | WARNING | <p>High Voltage: Disconnect all power before servicing or installing this unit. Multiple power sources may be present. Failure to do so may cause property damage, personal injury, or death.</p> | |
|--|----------------|--|--|

DOWNFLOW KITS

| DFK-B | DFK-C | DFK-D |
|--------------|--------------|--------------|
| AVPTC25B14** | AVPTC31C14** | AVPTC37D14** |
| AVPTC29B14** | AVPTC33C14** | AVPTC59D14** |
| AVPTC35B14** | AVPTC37C14** | AVPTC49D14** |
| AVPTC37B14** | AVPTC39C14** | AVPTC61D14** |
| | AVPTC49C14** | |
| | AVPTC59C14** | |

FILTERS

| CHASSIS | PART # | SIZE |
|---------|--------------|---------------|
| B | ALFH16201E | 16.0" x 20.0" |
| C | ALFH1912201E | 19.5" x 20.0" |
| D | ALFH20231E | 23.0" x 20.0" |

SINGLE POINT KIT **

| MODEL | HKR-15C | HKR-20C | HKR-21C |
|--------|---------|---------|---------|
| SPW-01 | X | X | X |

** Must be installed along with any of the above compatible heat kits. This kit will fit any AVPTC air handler as long as a compatible heat kit is installed in the unit.

AVPTC

*PRODUCTION OF AVPTC WITH MAJOR REVISION A HAS BEEN REPLACED
BY MAJOR REVISION B (WITH COMFORTBRIDGE™ COMPATIBILITY).
SPECIFICATION SHEETS FOR AVPTC MAJOR REVISION A UNITS WILL CONTINUE
TO BE AVAILABLE AT WWW.GOODMANMFG.COM UNTIL DEPLETION.*

**MULTI-POSITION, VARIABLE-SPEED,
 ECM-BASED AIR HANDLER
 WITH INTERNAL TXV
 COMFORTNET® COMPATIBLE
 2 TO 5 TONS**



ComfortNet®



Contents

Air Handler Nomenclature..... 2
 Heater Kit Nomenclature 2
 Product Specifications..... 3
 Dimensions 4
 Airflow Data 5
 Heat Kit Data..... 7
 Wiring Diagram..... 16
 Accessories 18

Product Features

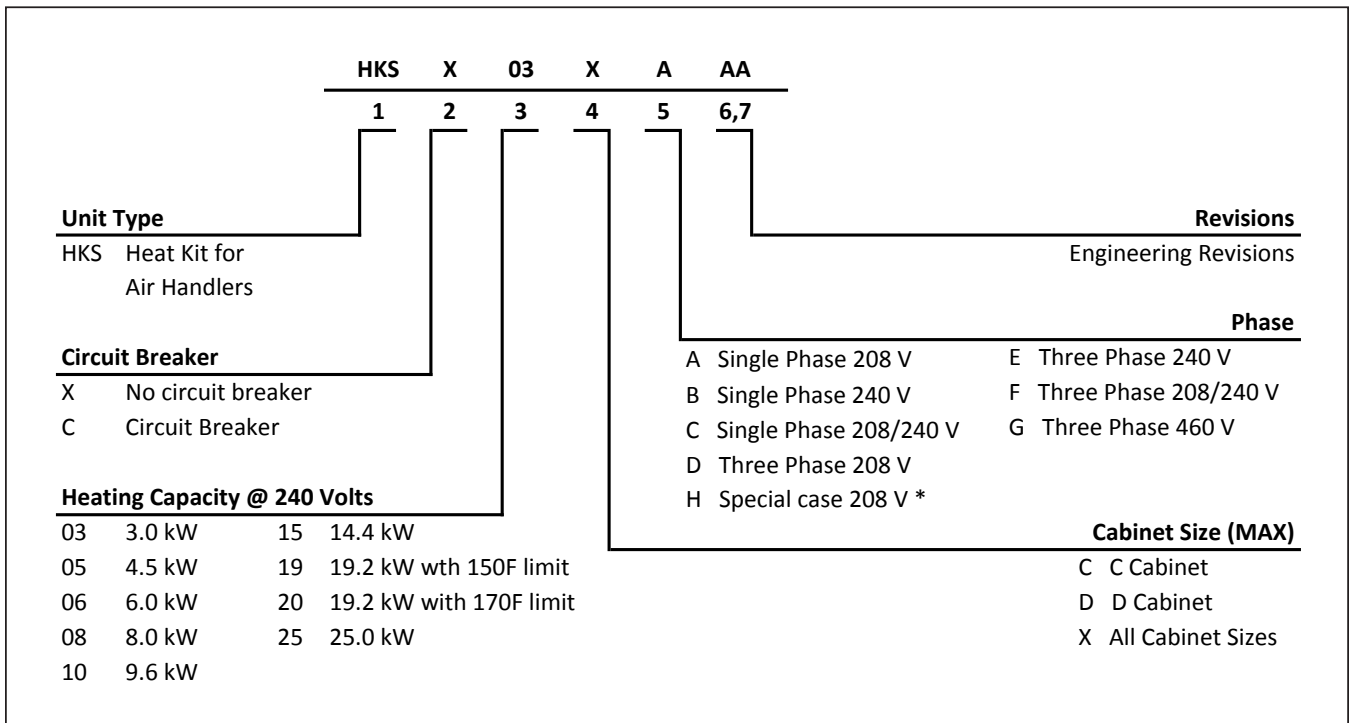
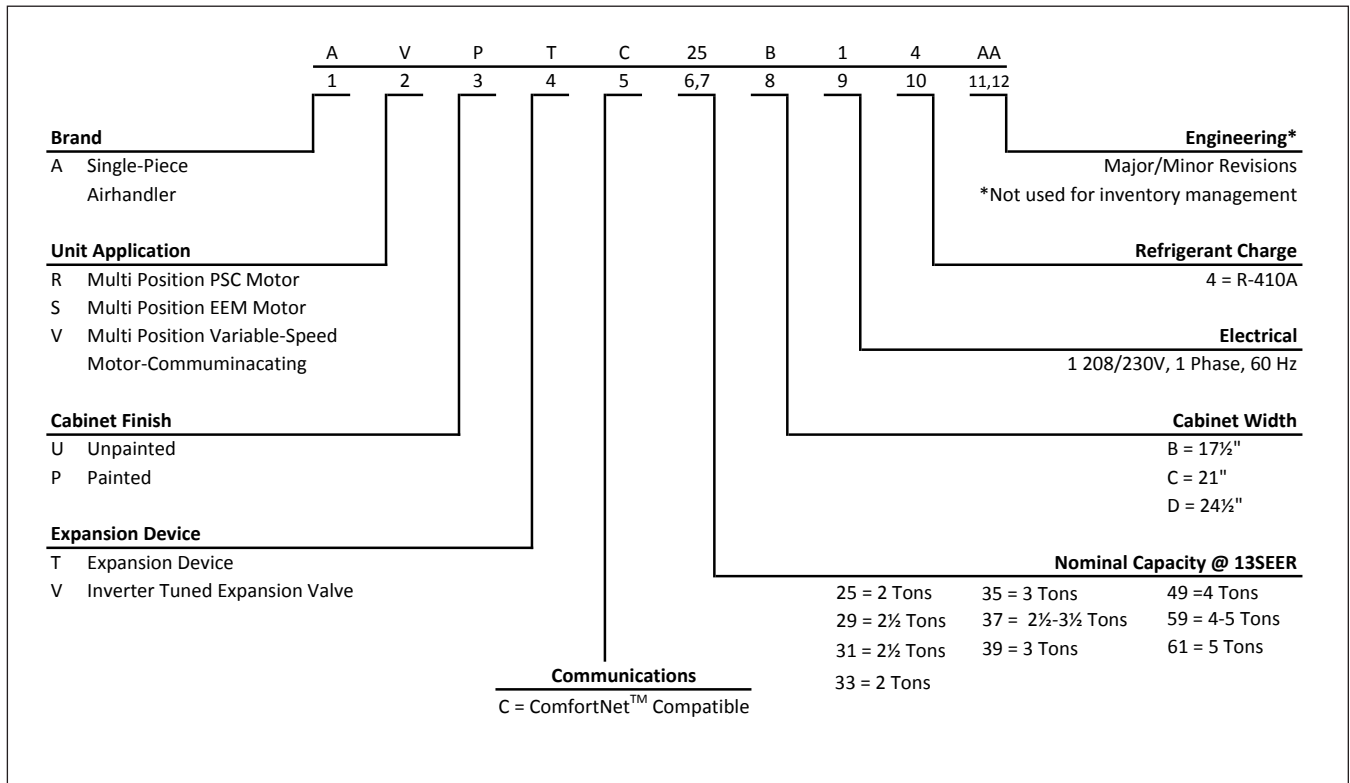
- Internal factory-installed thermal expansion valves for cooling and heat pump applications
- Variable-speed ECM blower motor
- ComfortNet® Communicating System compatible
- Auto configuration of the airflow and tonnage in communicating mode
- Provides constant CFM over a wide range of static pressure conditions independent of duct system
- CFM indicator
- Fault recall of six most recent faults
- Provides adjustable low CFM for efficient fan-only operation
- Improved humidity and comfort control
- Built-in compatibility with multi-stage heat pump and cooling applications
- All-aluminum evaporator coil
- AHRI certified; ETL listed
- Rigid SmartFrame™ cabinet
- Cabinet air leakage less than 2.0% at 1.0 inch H₂O when tested in accordance with ASHRAE standard 193
- Cabinet air leakage less than 1.4% at 0.5 inch H₂O when tested in accordance with ASHRAE standard 193
- Horizontal or vertical configuration capabilities
- 21" depth for easier attic access
- DecaBDE-free thermoplastic drain pan with secondary drain connections
- Screw-less sides and back helps to reduce condensation when installed in humid locations
- Foil-faced insulation covers the internal casing to reduce cabinet condensation
- Galvanized, leather grain-embossed finish
- Glue-less cabinet insulation retention
- Tool-less filter access
- Field Installed 3 kW – 25 kW electric heater kits available



COMPANY WITH
 QUALITY SYSTEM
 CERTIFIED BY DNV GL
 = ISO 9001 =

COMPANY WITH
 ENVIRONMENTAL SYSTEM
 CERTIFIED BY DNV GL
 = ISO 14001 =

* Complete warranty details available from your local dealer or at www.amana-hac.com. To receive the 10-Year Parts Limited Warranty, online registration must be completed within 60 days of installation. Online registration is not required in California or Québec.



*Refer S&R Plate

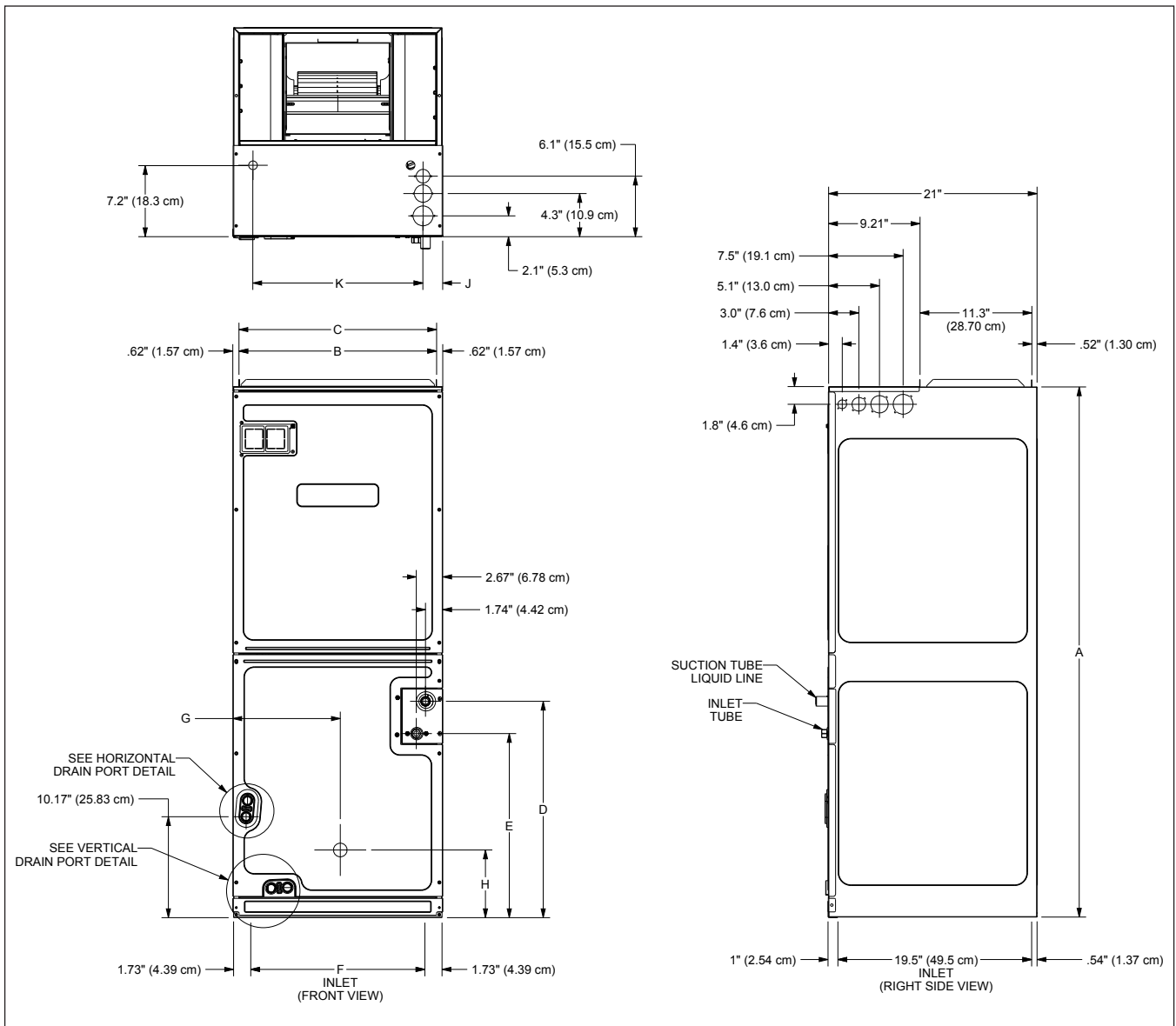
| | AVPTC 25B14A* | AVPTC 29B14A* | AVPTC 31C14A* | AVPTC 33C14* | AVPTC 35B14A* | AVPTC 37B14A* | AVPTC 37C14A* | AVPTC 37D14A* |
|--------------------------------|------------------|------------------|------------------|-----------------|------------------|------------------|------------------|------------------|
| NOMINAL RATINGS | | | | | | | | |
| Cooling (BTU/h) | 24,000 | 30,000 | 30,000 | 24,000 | 28,000 | 36,000 | 36,000 | 36,000 |
| CFM (High range) | 1085/650 | 1085/610 | 1315/870 | 1090/685 | 1020/685 | 1085/610 | 1315/870 | 1375/865 |
| BLOWER | | | | | | | | |
| Diameter | 9½" | 9½" | 10⅝" | 10⅝" | 9½" | 9½" | 10⅝" | 10⅝" |
| Width | 6" | 6" | 8" | 8" | 6" | 6" | 8" | 10⅝" |
| Coil Drain Connection FPT | ¾" | ¾" | ¾" | ¾" | ¾" | ¾" | ¾" | ¾" |
| SERVICE VALVE | | | | | | | | |
| Liquid | ⅜" | ⅜" | ⅜" | ⅜" | ⅜" | ⅜" | ⅜" | ⅜" |
| Suction | ¾" | ⅞" | ⅞" | ⅞" | ¾" | ⅞" | ⅞" | ⅞" |
| ELECTRICAL DATA | | | | | | | | |
| Voltage | 208/240 | 208/240 | 208/240 | 208/240 | 208/240 | 208/240 | 208/240 | 208/240 |
| Min Circuit Ampacity | 4.9/4.9 | 6.5/6.5 | 6.5/6.5 | 4.9/4.9 | 4.9/4.9 | 6.5/6.5 | 6.5/6.5 | 6.5/6.5 |
| Max. Overcurrent Device (amps) | 15/15 | 15/15 | 15/15 | 15/15 | 15/15 | 15/15 | 15/15 | 15/15 |
| Minimum VAC | 197 | 197 | 197 | 197 | 197 | 197 | 197 | 197 |
| Maximum VAC | 253 | 253 | 253 | 253 | 253 | 253 | 253 | 253 |
| BLOWER MOTOR | | | | | | | | |
| FLA | 3.9 | 5.2 | 5.2 | 3.9 | 3.9 | 5.2 | 5.2 | 5.2 |
| HP | ½ | ¾ | ¾ | ½ | ½ | ¾ | ¾ | ¾ |
| SHIP WEIGHT (LBS) | | | | | | | | |
| | 116 | 129 | 144 | 118 | 116 | 129 | 144 | 155 |

Note: Minimum Circuit Ampacity (MCA) and Maximum Overcurrent Protection (MOP) for blower without supplemental heat installed.
Refer to unit nameplate and/or Heat Kit Data for specification with approved accessory heaters installed

| | AVPTC 39C14* | AVPTC 49C14* | AVPTC 49D14A* | AVPTC 59C14A* | AVPTC 59D14A* | AVPTC 61D14A* |
|--------------------------------|-----------------|-----------------|------------------|------------------|------------------------------------|------------------------------------|
| NOMINAL RATINGS | | | | | | |
| Cooling (BTU/h) | 36,000 | 48,000 | 42,000 | 48,000 | 48,000 | 60,000 |
| CFM (High range) | 1315/965 | 1420/1040 | 1530/1195 | 1595/875 | 1990/1445 | 2025/1630 |
| BLOWER | | | | | | |
| Diameter | 10⅝" | 10⅝" | 10⅝" | 10⅝" | 11 ¹⁵ / ₁₆ " | 11 ¹⁵ / ₁₆ " |
| Width | 8" | 8" | 10⅝" | 8" | 10⅝" | 10⅝" |
| Coil Drain Connection FPT | ¾" | ¾" | ¾" | ¾" | ¾" | ¾" |
| SERVICE VALVE | | | | | | |
| Liquid | ⅜" | ⅜" | ⅜" | ⅜" | ⅜" | ⅜" |
| Suction | ⅞" | ⅞" | ⅞" | ⅞" | ⅞" | ⅞" |
| ELECTRICAL DATA | | | | | | |
| Voltage | 208/240 | 208/240 | 208/240 | 208/240 | 208/240 | 208/240 |
| Min Circuit Ampacity | 6.5/6.5 | 6.5/6.5 | 6.5/6.5 | 8.6/8.6 | 8.6/8.6 | 8.6/8.6 |
| Max. Overcurrent Device (amps) | 15/15 | 15/15 | 15/15 | 15/15 | 15/15 | 15/15 |
| Minimum VAC | 197 | 197 | 197 | 197 | 197 | 197 |
| Maximum VAC | 253 | 253 | 253 | 253 | 253 | 253 |
| BLOWER MOTOR | | | | | | |
| FLA | 5.2 | 5.2 | 5.2 | 6.9 | 6.9 | 6.9 |
| HP | ¾ | ¾ | ¾ | 1 | 1 | 1 |
| SHIP WEIGHT (LBS) | | | | | | |
| | 118 | 125 | 167 | 144 | 155 | 167 |

Note: Minimum Circuit Ampacity (MCA) and Maximum Overcurrent Protection (MOP) for blower without supplemental heat installed.

Refer to unit nameplate and/or Heat Kit Data for specification with approved accessory heaters installed



| MODEL | A | B | C | D | E | F | G | H |
|-------------|-------------------|-------------------|------------------|--------------------|-------------------|--------------------|--------------------|-------------------|
| AVPTC25B14* | 45 | 16 $\frac{3}{8}$ | 17 $\frac{1}{2}$ | 15 $\frac{1}{4}$ | 12 | 14 $\frac{1}{8}$ | 9 $\frac{1}{8}$ | 12 $\frac{3}{8}$ |
| AVPTC29B14* | 53 $\frac{7}{16}$ | 16 $\frac{3}{8}$ | 17 $\frac{1}{2}$ | 23 $\frac{11}{16}$ | 20 $\frac{1}{2}$ | 14 $\frac{1}{8}$ | 9 $\frac{1}{8}$ | 7 $\frac{1}{8}$ |
| AVPTC31C14* | 53 $\frac{7}{16}$ | 19 $\frac{1}{8}$ | 21 | 21 $\frac{13}{16}$ | 18 $\frac{3}{8}$ | 17 $\frac{11}{16}$ | 10 $\frac{13}{16}$ | 6 $\frac{13}{16}$ |
| AVPTC33C14* | 49 | 19 $\frac{1}{8}$ | 21 | 17 $\frac{9}{16}$ | 14 $\frac{3}{8}$ | 17 $\frac{11}{16}$ | 10 $\frac{9}{16}$ | 12 $\frac{1}{2}$ |
| AVPTC35B14* | 45 | 16 $\frac{3}{8}$ | 17 $\frac{1}{2}$ | 15 $\frac{1}{4}$ | 12 | 14 $\frac{1}{8}$ | 9 $\frac{1}{8}$ | 12 $\frac{3}{8}$ |
| AVPTC37B14* | 53 $\frac{7}{16}$ | 16 $\frac{3}{8}$ | 17 $\frac{1}{2}$ | 23 $\frac{11}{16}$ | 20 $\frac{1}{2}$ | 14 $\frac{1}{8}$ | 9 $\frac{1}{8}$ | 7 $\frac{1}{8}$ |
| AVPTC37C14* | 53 $\frac{7}{16}$ | 19 $\frac{1}{8}$ | 21 | 21 $\frac{13}{16}$ | 18 $\frac{3}{8}$ | 17 $\frac{11}{16}$ | 10 $\frac{13}{16}$ | 6 $\frac{13}{16}$ |
| AVPTC37D14* | 53 $\frac{7}{16}$ | 23 $\frac{5}{16}$ | 24 $\frac{1}{2}$ | 21 $\frac{1}{2}$ | 18 $\frac{5}{16}$ | 21 $\frac{3}{16}$ | 12 $\frac{3}{8}$ | 6 $\frac{1}{8}$ |
| AVPTC39C14* | 49 | 19 $\frac{1}{8}$ | 21 | 17 $\frac{9}{16}$ | 14 $\frac{3}{8}$ | 17 $\frac{11}{16}$ | 10 $\frac{9}{16}$ | 12 $\frac{1}{2}$ |
| AVPTC49C14* | 49 | 19 $\frac{1}{8}$ | 21 | 17 $\frac{9}{16}$ | 14 $\frac{3}{8}$ | 17 $\frac{11}{16}$ | 10 $\frac{9}{16}$ | 12 $\frac{1}{2}$ |
| AVPTC49D14* | 58 | 23 $\frac{5}{16}$ | 24 $\frac{1}{2}$ | 26 $\frac{1}{8}$ | 22 $\frac{1}{2}$ | 21 $\frac{3}{16}$ | 12 $\frac{3}{8}$ | 25 $\frac{1}{8}$ |
| AVPTC59C14* | 53 $\frac{7}{16}$ | 19 $\frac{1}{8}$ | 21 | 21 $\frac{13}{16}$ | 18 $\frac{3}{8}$ | 17 $\frac{11}{16}$ | 10 $\frac{13}{16}$ | 6 $\frac{13}{16}$ |
| AVPTC59D14* | 53 $\frac{7}{16}$ | 23 $\frac{5}{16}$ | 24 $\frac{1}{2}$ | 21 $\frac{1}{2}$ | 18 $\frac{5}{16}$ | 21 $\frac{3}{16}$ | 12 $\frac{3}{8}$ | 6 $\frac{1}{8}$ |
| AVPTC61D14* | 58 | 23 $\frac{5}{16}$ | 24 $\frac{1}{2}$ | 26 $\frac{1}{8}$ | 22 $\frac{1}{2}$ | 21 $\frac{3}{16}$ | 12 $\frac{3}{8}$ | 25 $\frac{1}{8}$ |

| MODEL | SPEED TAP | | 0.1 | 0.2 | 0.3 | 0.4 | 0.5 | 0.6 | 0.7 | 0.8 | 0.9 |
|------------------------------|-----------|------|------|------|------|------|------|------|------|------|------|
| AVPTC25B14AB | A | Low | 460 | 445 | 445 | 425 | 410 | 400 | 400 | 400 | 395 |
| | B | Low | 620 | 610 | 600 | 605 | 600 | 590 | 585 | 575 | 565 |
| | C | Low | 700 | 695 | 690 | 690 | 690 | 690 | 675 | 665 | 660 |
| | D | Low | 750 | 750 | 745 | 745 | 740 | 730 | 720 | 710 | 700 |
| | A | High | 670 | 660 | 650 | 650 | 655 | 645 | 640 | 635 | 625 |
| | B | High | 870 | 865 | 855 | 850 | 840 | 840 | 840 | 830 | 835 |
| | C | High | 1000 | 990 | 980 | 975 | 965 | 965 | 955 | 955 | 945 |
| | D | High | 1105 | 1095 | 1085 | 1075 | 1065 | 1055 | 1050 | 1040 | 1030 |
| AVPTC29B14AB AVPTC37B14AB | A | Low | 390 | 385 | 375 | 360 | 350 | 335 | 325 | 315 | 305 |
| | B | Low | 545 | 540 | 545 | 540 | 540 | 540 | 535 | 530 | 525 |
| | C | Low | 610 | 620 | 630 | 635 | 630 | 625 | 620 | 625 | 625 |
| | D | Low | 720 | 735 | 740 | 740 | 735 | 730 | 725 | 715 | 705 |
| | A | High | 615 | 620 | 610 | 605 | 610 | 615 | 615 | 620 | 625 |
| | B | High | 790 | 795 | 795 | 795 | 795 | 790 | 800 | 795 | 785 |
| | C | High | 925 | 930 | 930 | 925 | 925 | 920 | 915 | 910 | 905 |
| | D | High | 1085 | 1085 | 1085 | 1080 | 1080 | 1075 | 1070 | 1065 | 1060 |
| AVPTC31C14AD AVPTC37C14AC | A | Low | 610 | 600 | 590 | 590 | 600 | 605 | 610 | 610 | 610 |
| | B | Low | 710 | 710 | 705 | 705 | 695 | 690 | 685 | 675 | 665 |
| | C | Low | 845 | 845 | 845 | 825 | 815 | 810 | 800 | 805 | 795 |
| | D | Low | 915 | 910 | 910 | 900 | 850 | 840 | 830 | 820 | 825 |
| | A | High | 885 | 880 | 880 | 860 | 850 | 840 | 830 | 820 | 830 |
| | B | High | 1055 | 1055 | 1055 | 1040 | 1030 | 1015 | 1005 | 995 | 985 |
| | C | High | 1275 | 1270 | 1265 | 1260 | 1250 | 1240 | 1230 | 1215 | 1205 |
| | D | High | 1365 | 1360 | 1360 | 1330 | 1300 | 1290 | 1280 | 1270 | 1255 |
| AVPTC33C14AB | A | Low | 500 | 480 | 460 | 445 | 430 | 415 | 400 | 380 | 365 |
| | B | Low | 580 | 565 | 545 | 535 | 525 | 515 | 505 | 495 | 485 |
| | C | Low | 710 | 700 | 685 | 675 | 670 | 665 | 655 | 645 | 640 |
| | D | Low | 725 | 750 | 755 | 760 | 755 | 745 | 735 | 725 | 715 |
| | A | High | 710 | 700 | 685 | 685 | 685 | 680 | 670 | 660 | 645 |
| | B | High | 765 | 780 | 785 | 785 | 785 | 775 | 770 | 760 | 745 |
| | C | High | 950 | 960 | 970 | 970 | 970 | 960 | 955 | 945 | 935 |
| | D | High | 1090 | 1090 | 1090 | 1095 | 1090 | 1085 | 1080 | 1075 | 1065 |
| AVPTC35B14 | A | Low | 395 | 390 | 395 | 390 | 385 | 380 | 380 | 380 | 380 |
| | B | Low | 580 | 580 | 590 | 580 | 575 | 580 | 575 | 575 | 575 |
| | C | Low | 670 | 670 | 680 | 690 | 680 | 670 | 660 | 660 | 665 |
| | D | Low | 715 | 705 | 710 | 720 | 715 | 705 | 690 | 685 | 680 |
| | A | High | 645 | 630 | 645 | 645 | 635 | 630 | 630 | 635 | 635 |
| | B | High | 900 | 875 | 870 | 870 | 870 | 870 | 865 | 855 | 845 |
| | C | High | 1030 | 1015 | 1005 | 995 | 990 | 985 | 990 | 990 | 980 |
| | D | High | 1075 | 1060 | 1045 | 1035 | 1030 | 1025 | 1020 | 1020 | 1015 |
| AVPTC37D14AC | A | Low | 605 | 605 | 605 | 575 | 560 | 545 | 525 | 510 | 500 |
| | B | Low | 730 | 725 | 725 | 700 | 700 | 695 | 680 | 660 | 645 |
| | C | Low | 820 | 820 | 820 | 800 | 760 | 750 | 740 | 720 | 700 |
| | D | Low | 870 | 885 | 940 | 885 | 875 | 865 | 850 | 835 | 835 |
| | A | High | 910 | 905 | 900 | 870 | 870 | 860 | 855 | 845 | 845 |
| | B | High | 1085 | 1080 | 1080 | 1060 | 1060 | 1055 | 1045 | 1035 | 1020 |
| | C | High | 1230 | 1225 | 1225 | 1205 | 1205 | 1200 | 1190 | 1185 | 1180 |
| | D | High | 1405 | 1405 | 1405 | 1370 | 1365 | 1355 | 1345 | 1335 | 1330 |

Note: When applying a humidistat (normally closed), refer to the installation and operating instructions. The humidistat can adjust the cooling airflow to 85%.

AIRFLOW DATA (CONT.)

| MODEL | SPEED TAP | | 0.1 | 0.2 | 0.3 | 0.4 | 0.5 | 0.6 | 0.7 | 0.8 | 0.9 |
|--------------|-----------|------|------|------|------|------|------|------|------|------|------|
| AVPTC39C14AC | A | Low | 715 | 695 | 680 | 685 | 685 | 680 | 675 | 665 | 650 |
| | B | Low | 755 | 770 | 780 | 780 | 780 | 780 | 770 | 765 | 755 |
| | C | Low | 780 | 790 | 795 | 805 | 800 | 800 | 795 | 805 | 795 |
| | D | Low | 875 | 885 | 890 | 890 | 890 | 890 | 885 | 880 | 875 |
| | A | High | 960 | 960 | 965 | 970 | 965 | 965 | 960 | 955 | 950 |
| | B | High | 1120 | 1115 | 1115 | 1115 | 1120 | 1115 | 1115 | 1110 | 1105 |
| | C | High | 1180 | 1180 | 1175 | 1175 | 1175 | 1175 | 1170 | 1165 | 1160 |
| | D | High | 1325 | 1320 | 1315 | 1315 | 1310 | 1310 | 1310 | 1305 | 1300 |
| AVPTC49C14AC | A | Low | 705 | 710 | 725 | 735 | 740 | 740 | 740 | 735 | 730 |
| | B | Low | 730 | 745 | 760 | 770 | 775 | 775 | 775 | 770 | 765 |
| | C | Low | 850 | 865 | 870 | 875 | 880 | 880 | 875 | 870 | 865 |
| | D | Low | 950 | 955 | 960 | 965 | 965 | 965 | 965 | 960 | 955 |
| | A | High | 1030 | 1040 | 1040 | 1045 | 1045 | 1045 | 1045 | 1040 | 1035 |
| | B | High | 1090 | 1095 | 1095 | 1095 | 1095 | 1095 | 1095 | 1090 | 1085 |
| | C | High | 1290 | 1290 | 1280 | 1285 | 1280 | 1280 | 1275 | 1275 | 1270 |
| | D | High | 1425 | 1425 | 1420 | 1420 | 1415 | 1410 | 1410 | 1405 | 1400 |
| AVPTC49D144B | A | Low | 795 | 815 | 820 | 820 | 810 | 800 | 785 | 785 | 770 |
| | B | Low | 870 | 890 | 895 | 895 | 890 | 875 | 865 | 850 | 850 |
| | C | Low | 985 | 990 | 995 | 995 | 990 | 980 | 970 | 955 | 940 |
| | D | Low | 1040 | 1055 | 1055 | 1055 | 1045 | 1035 | 1025 | 1020 | 1005 |
| | A | High | 1195 | 1195 | 1195 | 1200 | 1195 | 1185 | 1175 | 1165 | 1155 |
| | B | High | 1325 | 1320 | 1320 | 1315 | 1315 | 1305 | 1295 | 1285 | 1275 |
| | C | High | 1460 | 1460 | 1455 | 1455 | 1455 | 1450 | 1440 | 1430 | 1420 |
| | D | High | 1520 | 1530 | 1530 | 1530 | 1530 | 1525 | 1515 | 1510 | 1495 |
| AVPTC59C14AC | A | Low | 635 | 620 | 610 | 600 | 600 | 600 | 600 | 600 | 600 |
| | B | Low | 790 | 805 | 810 | 810 | 805 | 805 | 795 | 810 | 800 |
| | C | Low | 930 | 940 | 940 | 935 | 930 | 925 | 920 | 915 | 905 |
| | D | Low | 1065 | 1065 | 1070 | 1065 | 1060 | 1050 | 1045 | 1035 | 1030 |
| | A | High | 870 | 880 | 875 | 875 | 870 | 865 | 860 | 860 | 845 |
| | B | High | 1230 | 1230 | 1225 | 1220 | 1210 | 1205 | 1200 | 1190 | 1180 |
| | C | High | 1420 | 1410 | 1410 | 1405 | 1395 | 1385 | 1380 | 1380 | 1370 |
| | D | High | 1615 | 1600 | 1595 | 1595 | 1585 | 1580 | 1570 | 1565 | 1555 |
| AVPTC59D14AC | A | Low | 1030 | 1035 | 1040 | 1040 | 1030 | 1025 | 1015 | 995 | 970 |
| | B | Low | 1260 | 1260 | 1260 | 1260 | 1260 | 1250 | 1245 | 1235 | 1225 |
| | C | Low | 1330 | 1335 | 1330 | 1330 | 1325 | 1320 | 1315 | 1305 | 1295 |
| | D | Low | 1395 | 1395 | 1395 | 1390 | 1390 | 1385 | 1375 | 1365 | 1355 |
| | A | High | 1450 | 1445 | 1445 | 1435 | 1430 | 1425 | 1420 | 1410 | 1395 |
| | B | High | 1795 | 1790 | 1790 | 1785 | 1775 | 1765 | 1760 | 1750 | 1745 |
| | C | High | 1890 | 1890 | 1890 | 1880 | 1870 | 1865 | 1855 | 1850 | 1840 |
| | D | High | 1995 | 1995 | 1990 | 1985 | 1985 | 1975 | 1965 | 1955 | 1945 |
| AVPTC61D14AC | A | Low | 1080 | 1085 | 1080 | 1085 | 1080 | 1075 | 1070 | 1065 | 1055 |
| | B | Low | 1200 | 1200 | 1210 | 1210 | 1210 | 1210 | 1205 | 1205 | 1200 |
| | C | Low | 1290 | 1290 | 1280 | 1275 | 1280 | 1280 | 1270 | 1265 | 1265 |
| | D | Low | 1360 | 1355 | 1350 | 1355 | 1350 | 1345 | 1340 | 1340 | 1330 |
| | A | High | 1630 | 1630 | 1630 | 1625 | 1620 | 1615 | 1610 | 1600 | 1590 |
| | B | High | 1820 | 1820 | 1820 | 1815 | 1805 | 1795 | 1785 | 1780 | 1770 |
| | C | High | 1935 | 1930 | 1925 | 1920 | 1905 | 1900 | 1890 | 1875 | 1865 |
| | D | High | 2035 | 2030 | 2025 | 2020 | 2005 | 1995 | 1985 | 1960 | 1955 |

Note: When applying a humidistat (normally closed), refer to the installation and operating instructions. The humidistat can adjust the cooling airflow to 85%.

| HTR kW | 9 | 10 | 11 | AVPTC 25B14 | AVPTC 29B14 | AVPTC 31C14 | AVPTC 33C14 | AVPTC 35B14 | AVPTC 37B14 | AVPTC 37C14 | AVPTC 37D14 | AVPTC 39C14 |
|-----------|-----|-----|-----|----------------|----------------|----------------|----------------|----------------|----------------|----------------|----------------|----------------|
| 3 | ON | ON | ON | 550 | 550 | 600 | 600 | 550 | 550 | --- | --- | --- |
| 5 | ON | ON | OFF | 650 | 650 | 850 | 700 | 660 | 650 | 850 | 1240 | 850 |
| 6 | ON | OFF | ON | 700 | 700 | 900 | 750 | 700 | 700 | 900 | 1240 | 900 |
| 8 | ON | OFF | OFF | 800 | 800 | 1000 | 875 | 800 | 800 | 1000 | 1240 | 1000 |
| 10 | OFF | ON | ON | 850 | 875 | 1170 | 950 | 875 | 875 | 1170 | 1240 | 1170 |
| 15 | OFF | ON | OFF | 875 | 875 | 1345 | 950 | 875 | 1050 | 1345 | 1520 | 1345 |
| 19* | OFF | OFF | ON | --- | --- | 1345 | --- | --- | --- | 1345 | --- | 1345 |
| 20 | | | | --- | --- | --- | --- | --- | --- | --- | 1520 | --- |
| 21 or 25* | OFF | OFF | OFF | --- | --- | --- | --- | --- | --- | --- | --- | --- |

Note: Airflow data shown applies to the electric heat only in either legacy mode or communicating mode operation

--- indicates Not Rated

* Within thermostat user menu, CTK0* communicating thermostat will display 20kW for OFF- OFF- ON dipswitch selection, 21kW for OFF-OFF-OFF dipswitch selection.

† For match up with a 2 ton outdoor unit: Heater kit application shall not exceed 10 kW. Airflow for 5 kW up to 10 kW heater kits shall be set to 850 cfm speed tap of ON-ON-ON.

†† For match up with a 3 ton outdoor unit: Heater kit application shall not exceed 15 kW. Airflow for 5 kW up to 15 kW heater kits shall be set to 1300 cfm speed tap of ON-OFF-ON.

††† For match up with a 3.5 ton outdoor unit: Heater kit application shall not exceed 20 kW. Airflow for 5 kW up to 20 kW heater kits shall be set to 1500 cfm speed tap of ON-OFF-OFF

** 3 kW heater kit is not applicable for this indoor application.

| HTR kW | 9 | 10 | 11 | AVPTC 49C14 | AVPTC 49D14 †† | AVPTC 59C14 | AVPT C59D14 | AVPTC 61D14 ††† |
|-----------|-----|-----|-----|----------------|-------------------|----------------|----------------|--------------------|
| 3 | ON | ON | ON | --- | --- | --- | --- | --- |
| 5 | ON | ON | OFF | 1170 | 1250 | 1170 | 1240 | 1250 |
| 6 | ON | OFF | ON | 1170 | 1300 | 1170 | 1240 | 1300 |
| 8 | ON | OFF | OFF | 1170 | 1500 | 1170 | 1240 | 1500 |
| 10 | OFF | ON | ON | 1170 | 1550 | 1170 | 1240 | 1550 |
| 15 | OFF | ON | OFF | 1345 | 1720 | 1345 | 1520 | 1780 |
| 19* | OFF | OFF | ON | 1345 | --- | 1345 | --- | --- |
| 20 | | | | --- | --- | --- | 1520 | 1850 |
| 21 or 25* | OFF | OFF | OFF | --- | --- | --- | --- | 1850 |

Note: Airflow data shown applies to the electric heat only in either legacy mode or communicating mode operation

--- indicates Not Rated

* Within thermostat user menu, CTK0* communicating thermostat will display 20kW for OFF- OFF- ON dipswitch selection, 21kW for OFF-OFF-OFF dipswitch selection.

† For match up with a 2 ton outdoor unit: Heater kit application shall not exceed 10 kW. Airflow for 5 kW up to 10 kW heater kits shall be set to 850 cfm speed tap of ON-ON-ON.

†† For match up with a 3 ton outdoor unit: Heater kit application shall not exceed 15 kW. Airflow for 5 kW up to 15 kW heater kits shall be set to 1300 cfm speed tap of ON-OFF-ON.

††† For match up with a 3.5 ton outdoor unit: Heater kit application shall not exceed 20 kW. Airflow for 5 kW up to 20 kW heater kits shall be set to 1500 cfm speed tap of ON-OFF-OFF

** 3 kW heater kit is not applicable for this indoor application.

HEAT KIT DATA

| HEATER KIT MODEL | | CIRCUIT 1 | | | CIRCUIT 2 | | | SINGLE-POINT KIT | |
|---------------------|------------|-------------|------------------|------------------|-------------|------------------|------------------|------------------|------------------|
| | | HEATER AMPS | MCA ¹ | MOP ² | HEATER AMPS | MCA ¹ | MOP ² | MCA ¹ | MOP ² |
| AVPTC25B14AB | | 0/0 | 4.9/4.9 | 15/15 | --- | --- | --- | --- | --- |
| HKSX03XC - 208 V | No Breaker | 10.8 | 18.4 | 20 | --- | --- | --- | --- | --- |
| HKSX05XC - 208 V | | 17.3 | 27 | 30 | --- | --- | --- | --- | --- |
| HKSX06XC - 208 V | | 21.7 | 32 | 35 | --- | --- | --- | --- | --- |
| HKSX08XC - 208 V | | 28.9 | 41 | 45 | --- | --- | --- | --- | --- |
| HKSX10XC - 208 V | | 34.7 | 48 | 50 | --- | --- | --- | --- | --- |
| HKSC05XC - 208 V | Breaker | 17.3 | 27 | 30 | --- | --- | --- | --- | --- |
| HKSC08XC - 208 V | | 28.9 | 41 | 45 | --- | --- | --- | --- | --- |
| HKSC10XC - 208 V | | 34.7 | 48 | 50 | --- | --- | --- | --- | --- |
| HKSC15XA - 208 V | | 34.7 | 48 | 50 | 17.3 | 21.7 | 25 | 69.9 | 70 |
| HKSX03XC - 240 V | No Breaker | 12.5 | 21 | 25 | --- | --- | --- | --- | --- |
| HKSX05XC - 240 V | | 20 | 29.9 | 30 | --- | --- | --- | --- | --- |
| HKSX06XC - 240 V | | 25 | 36.1 | 40 | --- | --- | --- | --- | --- |
| HKSX08XC - 240 V | | 33.3 | 46.5 | 50 | --- | --- | --- | --- | --- |
| HKSX10XC - 240 V | | 40 | 54.9 | 60 | --- | --- | --- | --- | --- |
| HKSC05XC - 240 V | Breaker | 20 | 29.9 | 30 | --- | --- | --- | --- | --- |
| HKSC08XC - 240 V | | 33.3 | 46.5 | 50 | --- | --- | --- | --- | --- |
| HKSC10XC - 240 V | | 40 | 54.9 | 60 | --- | --- | --- | --- | --- |
| HKSC15XB - 240 V | | 40 | 54.9 | 60 | 20 | 25 | 25 | 79.9 | 80 |
| AVPTC29B14AB | | 0/0 | 6.5/6.5 | 15/15 | --- | --- | --- | --- | --- |
| HKSX03XC - 208 V | No Breaker | 10.8 | 20 | 20 | --- | --- | --- | --- | --- |
| HKSX05XC - 208 V | | 17.3 | 28.2 | 30 | --- | --- | --- | --- | --- |
| HKSX06XC - 208 V | | 21.7 | 33.6 | 35 | --- | --- | --- | --- | --- |
| HKSX08XC - 208 V | | 28.9 | 42.6 | 45 | --- | --- | --- | --- | --- |
| HKSX10XC - 208 V | | 34.7 | 49.8 | 50 | --- | --- | --- | --- | --- |
| HKSC05XC - 208 V | Breaker | 17.3 | 28.2 | 30 | --- | --- | --- | --- | --- |
| HKSC08XC - 208 V | | 28.9 | 42.6 | 45 | --- | --- | --- | --- | --- |
| HKSC10XC - 208 V | | 34.7 | 49.8 | 50 | --- | --- | --- | --- | --- |
| HKSC15XA - 208 V | | 34.7 | 49.8 | 50 | 17.3 | 21.7 | 25 | 71.5 | 80 |
| HKSX03XC - 240 V | No Breaker | 12.5 | 22.1 | 25 | --- | --- | --- | --- | --- |
| HKSX05XC - 240 V | | 20 | 32 | 35 | --- | --- | --- | --- | --- |
| HKSX06XC - 240 V | | 25 | 38 | 40 | --- | --- | --- | --- | --- |
| HKSX08XC - 240 V | | 33.3 | 48 | 50 | --- | --- | --- | --- | --- |
| HKSX10XC - 240 V | | 40 | 57 | 60 | --- | --- | --- | --- | --- |
| HKSC05XC - 240 V | Breaker | 20 | 32 | 35 | --- | --- | --- | --- | --- |
| HKSC08XC - 240 V | | 33.3 | 48 | 50 | --- | --- | --- | --- | --- |
| HKSC10XC - 240 V | | 40 | 57 | 60 | --- | --- | --- | --- | --- |
| HKSC15XB - 240 V | | 40 | 57 | 60 | 20 | 25 | 25 | 81.5 | 90 |
| AVPTC31C14AD | | 0/0 | 6.5/6.5 | 15/15 | --- | --- | --- | --- | --- |
| HKSX03XC - 208 V | No Breaker | 10.8 | 20 | 20 | --- | --- | --- | --- | --- |
| HKSX05XC - 208 V | | 17.3 | 28.2 | 30 | --- | --- | --- | --- | --- |
| HKSX06XC - 208 V | | 21.7 | 33.6 | 35 | --- | --- | --- | --- | --- |
| HKSX08XC - 208 V | | 28.9 | 42.6 | 45 | --- | --- | --- | --- | --- |
| HKSX10XC - 208 V | | 34.7 | 49.8 | 50 | --- | --- | --- | --- | --- |

See notes on page 17.

| HEATER KIT MODEL | | CIRCUIT 1 | | | CIRCUIT 2 | | | SINGLE-POINT KIT | |
|---------------------|------------|-------------|------------------|------------------|-------------|------------------|------------------|------------------|------------------|
| | | HEATER AMPS | MCA ¹ | MOP ² | HEATER AMPS | MCA ¹ | MOP ² | MCA ¹ | MOP ² |
| HKSC05XC - 208 V | Breaker | 17.3 | 28.2 | 30 | --- | --- | --- | --- | --- |
| HKSC08XC - 208 V | | 28.9 | 42.6 | 45 | --- | --- | --- | --- | --- |
| HKSC10XC - 208 V | | 34.7 | 49.8 | 50 | --- | --- | --- | --- | --- |
| HKSC15XA - 208 V | | 34.7 | 49.8 | 50 | 17.3 | 21.7 | 25 | 71.5 | 80 |
| HKSC19CA - 208 V | | 34.7 | 49.8 | 50 | 34.7 | 43.3 | 45 | 93.2 | 100 |
| HKSC15XF - 208 V ^ | | 0 | 6.5 | 15 | 30 | 37.5 | 40 | --- | --- |
| HKSX03XC - 240 V | No Breaker | 12.5 | 22.1 | 25 | --- | --- | --- | --- | --- |
| HKSX05XC - 240 V | | 20 | 32 | 35 | --- | --- | --- | --- | --- |
| HKSX06XC - 240 V | | 25 | 38 | 40 | --- | --- | --- | --- | --- |
| HKSX08XC - 240 V | | 33.3 | 48 | 50 | --- | --- | --- | --- | --- |
| HKSX10XC - 240 V | | 40 | 57 | 60 | --- | --- | --- | --- | --- |
| HKSC05XC - 240 V | Breaker | 20 | 32 | 35 | --- | --- | --- | --- | --- |
| HKSC08XC - 240 V | | 33.3 | 48 | 50 | --- | --- | --- | --- | --- |
| HKSC10XC - 240 V | | 40 | 57 | 60 | --- | --- | --- | --- | --- |
| HKSC15XB - 240 V | | 40 | 56.5 | 60 | 20 | 25 | 25 | 81.5 | 90 |
| HKSC19CB - 240 V | | 40 | 56.5 | 60 | 40 | 50 | 50 | 107 | 110 |
| HKSC15XF - 240 V ^ | | 0 | 6.5 | 15 | 34.6 | 43 | 45 | --- | --- |
| AVPTC33C14AB | | 0.0/0.0 | 4.9/4.9 | 15/15 | --- | --- | --- | --- | --- |
| HKSX03XC - 208 V | No Breaker | 10.8 | 18.4 | 20 | --- | --- | --- | --- | --- |
| HKSX05XC - 208 V | | 17.3 | 27 | 30 | --- | --- | --- | --- | --- |
| HKSX06XC - 208 V | | 21.7 | 32 | 35 | --- | --- | --- | --- | --- |
| HKSX08XC - 208 V | | 28.9 | 41 | 45 | --- | --- | --- | --- | --- |
| HKSX10XC - 208 V | | 34.7 | 48 | 50 | --- | --- | --- | --- | --- |
| HKSC05XC - 208 V | Breaker | 17.3 | 27 | 30 | --- | --- | --- | --- | --- |
| HKSC08XC - 208 V | | 21.7 | 32 | 35 | --- | --- | --- | --- | --- |
| HKSC10XC - 208 V | | 28.9 | 41 | 45 | --- | --- | --- | --- | --- |
| HKSC15XA - 208 V | | 34.7 | 48 | 50 | 17.3 | 21.7 | 25 | 69.9 | 70 |
| HKSX03XC - 240 V | No Breaker | 12.5 | 21 | 25 | --- | --- | --- | --- | --- |
| HKSX05XC - 240 V | | 20 | 29.9 | 30 | --- | --- | --- | --- | --- |
| HKSX06XC - 240 V | | 25 | 36.1 | 40 | --- | --- | --- | --- | --- |
| HKSX08XC - 240 V | | 33.3 | 46.5 | 50 | --- | --- | --- | --- | --- |
| HKSX10XC - 240 V | | 40 | 54.9 | 60 | --- | --- | --- | --- | --- |
| HKSC05XC - 240 V | Breaker | 20 | 29.9 | 30 | --- | --- | --- | --- | --- |
| HKSC08XC - 240 V | | 33.3 | 46.5 | 50 | --- | --- | --- | --- | --- |
| HKSC10XC - 240 V | | 40 | 54.9 | 60 | --- | --- | --- | --- | --- |
| HKSC15XB - 240 V | | 40 | 54.9 | 60 | 20 | 25 | 25 | 79.9 | 80 |
| AVPTC35C14AA | | 0/0 | 4.9/4.9 | 15/15 | --- | --- | --- | --- | --- |
| HKSX03XC - 208 V | No Breaker | 10.8 | 18.4 | 20 | --- | --- | --- | --- | --- |
| HKSX05XC - 208 V | | 17.3 | 27 | 30 | --- | --- | --- | --- | --- |
| HKSX06XC - 208 V | | 21.7 | 32 | 35 | --- | --- | --- | --- | --- |
| HKSX08XC - 208 V | | 28.9 | 41 | 45 | --- | --- | --- | --- | --- |
| HKSX10XC - 208 V | | 34.7 | 48 | 50 | --- | --- | --- | --- | --- |

See notes on page 17.

HEAT KIT DATA (CONT.)

| HEATER KIT MODEL | | CIRCUIT 1 | | | CIRCUIT 2 | | | SINGLE-POINT KIT | |
|---------------------|------------|-------------|------------------|------------------|-------------|------------------|------------------|------------------|------------------|
| | | HEATER AMPS | MCA ¹ | MOP ² | HEATER AMPS | MCA ¹ | MOP ² | MCA ¹ | MOP ² |
| HKSC05XC - 208 V | Breaker | 17.3 | 27 | 30 | --- | --- | --- | --- | --- |
| HKSC08XC - 208 V | | 28.9 | 41 | 45 | --- | --- | --- | --- | --- |
| HKSC10XC - 208 V | | 34.7 | 48 | 50 | --- | --- | --- | --- | --- |
| HKSC15XA - 208 V | | 34.7 | 48 | 50 | 17.3 | 21.7 | 25 | 69.9 | 70 |
| HKSX03XC - 240 V | No Breaker | 12.5 | 21 | 25 | --- | --- | --- | --- | --- |
| HKSX05XC - 240 V | | 20 | 29.9 | 30 | --- | --- | --- | --- | --- |
| HKSX06XC - 240 V | | 25 | 36.1 | 40 | --- | --- | --- | --- | --- |
| HKSX08XC - 240 V | | 33.3 | 46.5 | 50 | --- | --- | --- | --- | --- |
| HKSX10XC - 240 V | | 40 | 54.9 | 60 | --- | --- | --- | --- | --- |
| HKSC05XC - 240 V | Breaker | 20 | 29.9 | 30 | --- | --- | --- | --- | --- |
| HKSC08XC - 240 V | | 33.3 | 46.5 | 50 | --- | --- | --- | --- | --- |
| HKSC10XC - 240 V | | 40 | 54.9 | 60 | --- | --- | --- | --- | --- |
| HKSC15XB - 240 V | | 40 | 54.9 | 60 | 20 | 25 | 25 | 79.9 | 80 |
| AVPTC37B14AB | | 0/0 | 6.5/6.5 | 15/15 | --- | --- | --- | --- | --- |
| HKSX03XC - 208 V | No Breaker | 10.8 | 20 | 20 | --- | --- | --- | --- | --- |
| HKSX05XC - 208 V | | 17.3 | 28.2 | 30 | --- | --- | --- | --- | --- |
| HKSX06XC - 208 V | | 21.7 | 33.6 | 35 | --- | --- | --- | --- | --- |
| HKSX08XC - 208 V | | 28.9 | 42.6 | 45 | --- | --- | --- | --- | --- |
| HKSX10XC - 208 V | | 34.7 | 49.8 | 50 | --- | --- | --- | --- | --- |
| HKSC05XC - 208 V | Breaker | 17.3 | 28.2 | 30 | --- | --- | --- | --- | --- |
| HKSC08XC - 208 V | | 28.9 | 42.6 | 45 | --- | --- | --- | --- | --- |
| HKSC10XC - 208 V | | 34.7 | 49.8 | 50 | --- | --- | --- | --- | --- |
| HKSC15XA - 208 V | | 34.7 | 49.8 | 50 | 17.3 | 21.7 | 25 | 71.5 | 80 |
| HKSX03XC - 240 V | No Breaker | 12.5 | 22.1 | 25 | --- | --- | --- | --- | --- |
| HKSX05XC - 240 V | | 20 | 32 | 35 | --- | --- | --- | --- | --- |
| HKSX06XC - 240 V | | 25 | 38 | 40 | --- | --- | --- | --- | --- |
| HKSX08XC - 240 V | | 33.3 | 48 | 50 | --- | --- | --- | --- | --- |
| HKSX10XC - 240 V | | 40 | 57 | 60 | --- | --- | --- | --- | --- |
| HKSC05XC - 240 V | Breaker | 20 | 32 | 35 | --- | --- | --- | --- | --- |
| HKSC08XC - 240 V | | 33.3 | 48 | 50 | --- | --- | --- | --- | --- |
| HKSC10XC - 240 V | | 40 | 57 | 60 | --- | --- | --- | --- | --- |
| HKSC15XB - 240 V | | 40 | 57 | 60 | 20 | 25 | 25 | 81.5 | 90 |
| AVPTC37C14AC | | 0/0 | 6.5/6.5 | 15/15 | --- | --- | --- | --- | --- |
| HKSX03XC - 208 V | No Breaker | --- | --- | --- | --- | --- | --- | --- | --- |
| HKSX05XC - 208 V | | 17.3 | 28.2 | 30 | --- | --- | --- | --- | --- |
| HKSX06XC - 208 V | | 21.7 | 33.6 | 35 | --- | --- | --- | --- | --- |
| HKSX08XC - 208 V | | 28.9 | 42.6 | 45 | --- | --- | --- | --- | --- |
| HKSX10XC - 208 V | | 34.7 | 49.8 | 50 | --- | --- | --- | --- | --- |
| HKSC05XC - 208 V | Breaker | 17.3 | 28.2 | 30 | --- | --- | --- | --- | --- |
| HKSC08XC - 208 V | | 28.9 | 42.6 | 45 | --- | --- | --- | --- | --- |
| HKSC10XC - 208 V | | 34.7 | 49.8 | 50 | --- | --- | --- | --- | --- |
| HKSC15XA - 208 V | | 34.7 | 49.8 | 50 | 17.3 | 21.7 | 25 | 71.5 | 80 |
| HKSC19CA - 208 V | | 34.7 | 49.8 | 50 | 34.7 | 43.3 | 45 | 93.2 | 100 |
| HKSC15XF - 208 V ^ | | 0 | 6.5 | 15 | 30 | 37.5 | 40 | --- | --- |

See notes on page 17.

| HEATER KIT MODEL | | CIRCUIT 1 | | | CIRCUIT 2 | | | SINGLE-POINT KIT | |
|---------------------|------------|-------------|------------------|------------------|-------------|------------------|------------------|------------------|------------------|
| | | HEATER AMPS | MCA ¹ | MOP ² | HEATER AMPS | MCA ¹ | MOP ² | MCA ¹ | MOP ² |
| HKSX03XC - 240 V | No Breaker | --- | --- | --- | --- | --- | --- | --- | --- |
| HKSX05XC - 240 V | | 20 | 32 | 35 | --- | --- | --- | --- | --- |
| HKSX06XC - 240 V | | 25 | 38 | 40 | --- | --- | --- | --- | --- |
| HKSX08XC - 240 V | | 33.3 | 48 | 50 | --- | --- | --- | --- | --- |
| HKSX10XC - 240 V | | 40 | 57 | 60 | --- | --- | --- | --- | --- |
| HKSC05XC - 240 V | Breaker | 20 | 32 | 35 | --- | --- | --- | --- | --- |
| HKSC08XC - 240 V | | 33.3 | 48 | 50 | --- | --- | --- | --- | --- |
| HKSC10XC - 240 V | | 40 | 57 | 60 | --- | --- | --- | --- | --- |
| HKSC15XB - 240 V | | 40 | 57 | 60 | 20 | 25 | 25 | 81.5 | 90 |
| HKSC19CB - 240 V | | 40 | 57 | 60 | 40 | 50 | 50 | 106.5 | 110 |
| HKSC15XF - 240 V ^ | | 0 | 6.5 | 15 | 34.6 | 43 | 45 | --- | --- |
| AVPTC37D14AC | | 0/0 | 6.5/6.5 | 15/15 | --- | --- | --- | --- | --- |
| HKSX03XC - 208 V | No Breaker | --- | --- | --- | --- | --- | --- | --- | --- |
| HKSX05XC - 208 V | | 17.3 | 28.2 | 30 | --- | --- | --- | --- | --- |
| HKSX06XC - 208 V | | 21.7 | 33.6 | 35 | --- | --- | --- | --- | --- |
| HKSX08XC - 208 V | | 28.9 | 42.6 | 45 | --- | --- | --- | --- | --- |
| HKSX10XC - 208 V | | 34.7 | 49.8 | 50 | --- | --- | --- | --- | --- |
| HKSC05XC - 208 V | Breaker | 17.3 | 28.2 | 30 | --- | --- | --- | --- | --- |
| HKSC08XC - 208 V | | 28.9 | 42.6 | 45 | --- | --- | --- | --- | --- |
| HKSC10XC - 208 V | | 34.7 | 49.8 | 50 | --- | --- | --- | --- | --- |
| HKSC15XA - 208 V | | 34.7 | 49.8 | 50 | 17.3 | 21.7 | 25 | 71.5 | 80 |
| HKSC20DA - 208 V | | 34.7 | 49.8 | 50 | 34.7 | 43.3 | 45 | 93.2 | 100 |
| HKSC15XF - 208 V ^ | | 0 | 6.5 | 15 | 30 | 37.5 | 40 | --- | --- |
| HKSC20XF - 208 V ^ | 0 | 6.5 | 15 | 37.5 | 47 | 50 | --- | --- | |
| HKSX03XC - 240 V | No Breaker | --- | --- | --- | --- | --- | --- | --- | --- |
| HKSX05XC - 240 V | | 20 | 32 | 35 | --- | --- | --- | --- | --- |
| HKSX06XC - 240 V | | 25 | 38 | 40 | --- | --- | --- | --- | --- |
| HKSX08XC - 240 V | | 33.3 | 48 | 50 | --- | --- | --- | --- | --- |
| HKSX10XC - 240 V | | 40 | 57 | 60 | --- | --- | --- | --- | --- |
| HKSC05XC - 240 V | Breaker | 20 | 32 | 35 | --- | --- | --- | --- | --- |
| HKSC08XC - 240 V | | 33.3 | 48 | 50 | --- | --- | --- | --- | --- |
| HKSC10XC - 240 V | | 40 | 57 | 60 | --- | --- | --- | --- | --- |
| HKSC15XB - 240 V | | 40 | 57 | 60 | 20 | 25 | 25 | 81.5 | 90 |
| HKSC20DB - 240 V | | 40 | 57 | 60 | 40 | 50 | 50 | 106.5 | 110 |
| HKSC15XF - 240 V ^ | | 0 | 6.5 | 15 | 34.6 | 43 | 45 | --- | --- |
| HKSC20XF - 240 V ^ | 0 | 6.5 | 15 | 43 | 54 | 60 | --- | --- | |
| AVPTC39C14AC | | 0.0/0.0 | 6.5/6.5 | 15/15 | --- | --- | --- | --- | --- |
| HKSX03XC - 208 V | No Breaker | --- | --- | --- | --- | --- | --- | --- | --- |
| HKSX05XC - 208 V | | 17.3 | 28.2 | 30 | --- | --- | --- | --- | --- |
| HKSX06XC - 208 V | | 21.7 | 33.6 | 35 | --- | --- | --- | --- | --- |
| HKSX08XC - 208 V | | 28.9 | 42.6 | 45 | --- | --- | --- | --- | --- |
| HKSX10XC - 208 V | | 34.7 | 49.8 | 50 | --- | --- | --- | --- | --- |

See notes on page 17.

HEAT KIT DATA (CONT.)

| HEATER KIT MODEL | | CIRCUIT 1 | | | CIRCUIT 2 | | | SINGLE-POINT KIT | |
|---------------------|------------|-------------|------------------|------------------|-------------|------------------|------------------|------------------|------------------|
| | | HEATER AMPS | MCA ¹ | MOP ² | HEATER AMPS | MCA ¹ | MOP ² | MCA ¹ | MOP ² |
| HKSC05XC - 208 V | Breaker | 17.3 | 28.2 | 30 | --- | --- | --- | --- | --- |
| HKSC08XC - 208 V | | 28.9 | 42.6 | 45 | --- | --- | --- | --- | --- |
| HKSC10XC - 208 V | | 34.7 | 49.8 | 50 | --- | --- | --- | --- | --- |
| HKSC15XA - 208 V | | 34.7 | 49.8 | 50 | 17.3 | 21.7 | 25 | 71.5 | 80 |
| HKSC19CA - 208 V | | 34.7 | 49.8 | 50 | 34.7 | 43.3 | 45 | 93.2 | 100 |
| HKSC15XF - 208 V ^ | | 0 | 6.5 | 15 | 30 | 37.5 | 40 | --- | --- |
| HKSX03XC - 240 V | No Breaker | --- | --- | --- | --- | --- | --- | --- | --- |
| HKSX05XC - 240 V | | 20 | 32 | 35 | --- | --- | --- | --- | --- |
| HKSX06XC - 240 V | | 25 | 38 | 40 | --- | --- | --- | --- | --- |
| HKSX08XC - 240 V | | 33.3 | 48 | 50 | --- | --- | --- | --- | --- |
| HKSX10XC - 240 V | | 40 | 57 | 60 | --- | --- | --- | --- | --- |
| HKSC05XC - 240 V | Breaker | 20 | 32 | 35 | --- | --- | --- | --- | --- |
| HKSC08XC - 240 V | | 33.3 | 48 | 50 | --- | --- | --- | --- | --- |
| HKSC10XC - 240 V | | 40 | 57 | 60 | --- | --- | --- | --- | --- |
| HKSC15XB - 240 V | | 40 | 57 | 60 | 20 | 25 | 25 | 81.5 | 90 |
| HKSC19CB - 240 V | | 40 | 57 | 60 | 40 | 50 | 50 | 106.5 | 110 |
| HKSC15XF - 240 V ^ | | 0 | 6.5 | 15 | 34.6 | 43 | 45 | --- | --- |
| AVPTC49C14AC | | 0.0/0.0 | 6.5/6.5 | 15/15 | --- | --- | --- | --- | --- |
| HKSX03XC - 208 V | No Breaker | --- | --- | --- | --- | --- | --- | --- | --- |
| HKSX05XC - 208 V | | 17.3 | 28.2 | 30 | --- | --- | --- | --- | --- |
| HKSX06XC - 208 V | | 21.7 | 33.6 | 35 | --- | --- | --- | --- | --- |
| HKSX08XC - 208 V | | 28.9 | 42.6 | 45 | --- | --- | --- | --- | --- |
| HKSX10XC - 208 V | | 34.7 | 49.8 | 50 | --- | --- | --- | --- | --- |
| HKSC05XC - 208 V | Breaker | 17.3 | 28.2 | 30 | --- | --- | --- | --- | --- |
| HKSC08XC - 208 V | | 28.9 | 42.6 | 45 | --- | --- | --- | --- | --- |
| HKSC10XC - 208 V | | 34.7 | 49.8 | 50 | --- | --- | --- | --- | --- |
| HKSC15XA - 208 V | | 34.7 | 49.8 | 50 | 17.3 | 21.7 | 25 | 71.5 | 80 |
| HKSC19CA - 208 V | | 34.7 | 49.8 | 50 | 34.7 | 43.3 | 45 | 93.2 | 100 |
| HKSC15XF - 208 V ^ | | 0 | 6.5 | 15 | 30 | 37.5 | 40 | --- | --- |
| HKSX03XC - 240 V | No Breaker | --- | --- | --- | --- | --- | --- | --- | --- |
| HKSX05XC - 240 V | | 20 | 32 | 35 | --- | --- | --- | --- | --- |
| HKSX06XC - 240 V | | 25 | 38 | 40 | --- | --- | --- | --- | --- |
| HKSX08XC - 240 V | | 33.3 | 48 | 50 | --- | --- | --- | --- | --- |
| HKSX10XC - 240 V | | 40 | 57 | 60 | --- | --- | --- | --- | --- |
| HKSC05XC - 240 V | Breaker | 20 | 32 | 35 | --- | --- | --- | --- | --- |
| HKSC08XC - 240 V | | 33.3 | 48 | 50 | --- | --- | --- | --- | --- |
| HKSC10XC - 240 V | | 40 | 57 | 60 | --- | --- | --- | --- | --- |
| HKSC15XB - 240 V | | 40 | 57 | 60 | 20 | 25 | 25 | 81.5 | 90 |
| HKSC19CB - 240 V | | 40 | 57 | 60 | 40 | 50 | 50 | 106.5 | 110 |
| HKSC15XF - 240 V ^ | | 0 | 6.5 | 15 | 34.6 | 43 | 45 | --- | --- |

See notes on page 17.

| HEATER KIT MODEL | | CIRCUIT 1 | | | CIRCUIT 2 | | | SINGLE-POINT KIT | |
|-------------------------------|------------|-------------|------------------|------------------|-------------|------------------|------------------|------------------|------------------|
| | | HEATER AMPS | MCA ¹ | MOP ² | HEATER AMPS | MCA ¹ | MOP ² | MCA ¹ | MOP ² |
| AVPTC49D14AB | | 0/0 | 6.5/6.5 | 15/15 | --- | --- | --- | --- | --- |
| HKX03XC - 208 V | No Breaker | --- | --- | --- | --- | --- | --- | --- | --- |
| HKX05XC - 208 V | | 17.3 | 28.2 | 30 | --- | --- | --- | --- | --- |
| HKX06XC - 208 V | | 21.7 | 33.6 | 35 | --- | --- | --- | --- | --- |
| HKX08XC - 208 V | | 28.9 | 42.6 | 45 | --- | --- | --- | --- | --- |
| HKX10XC - 208 V | | 34.7 | 49.8 | 50 | --- | --- | --- | --- | --- |
| HKSC05XC - 208 V | Breaker | 17.3 | 28.2 | 30 | --- | --- | --- | --- | --- |
| HKSC08XC - 208 V | | 28.9 | 42.6 | 45 | --- | --- | --- | --- | --- |
| HKSC10XC - 208 V | | 34.7 | 49.8 | 50 | --- | --- | --- | --- | --- |
| HKSC15XA - 208 V | | 34.7 | 49.8 | 50 | 17.3 | 21.7 | 25 | 71.5 | 80 |
| HKSC20DA - 208 V | | --- | --- | --- | --- | --- | --- | --- | --- |
| HKSC15XF - 208 V ^ | | --- | --- | --- | --- | --- | --- | --- | --- |
| HKSC20XF - 208 V ^ | | --- | --- | --- | --- | --- | --- | --- | --- |
| HKSC25DA - 208 V | --- | --- | --- | --- | --- | --- | --- | --- | |
| HKX03XC - 240 V | No Breaker | --- | --- | --- | --- | --- | --- | --- | --- |
| HKX05XC - 240 V | | 20 | 32 | 35 | --- | --- | --- | --- | --- |
| HKX06XC - 240 V | | 25 | 38 | 40 | --- | --- | --- | --- | --- |
| HKX08XC - 240 V | | 33.3 | 48 | 50 | --- | --- | --- | --- | --- |
| HKX10XC - 240 V | | 40 | 57 | 60 | --- | --- | --- | --- | --- |
| HKSC05XC - 240 V | Breaker | 20 | 32 | 35 | --- | --- | --- | --- | --- |
| HKSC08XC - 240 V | | 33.3 | 48 | 50 | --- | --- | --- | --- | --- |
| HKSC10XC - 240 V | | 40 | 57 | 60 | --- | --- | --- | --- | --- |
| HKSC15XB - 240 V | | 40 | 57 | 60 | 20 | 25 | 25 | 81.5 | 90 |
| HKSC20DB - 240 V | | --- | --- | --- | --- | --- | --- | --- | --- |
| HKSC15XF - 240 V ^ | | --- | --- | --- | --- | --- | --- | --- | --- |
| HKSC20XF - 240 V ^ | | --- | --- | --- | --- | --- | --- | --- | --- |
| HKSC25DB - 240 V | | --- | --- | --- | --- | --- | --- | --- | --- |
| AVPTC59C14AC | | 0/0 | 8.6/8.6 | 15/15 | --- | --- | --- | --- | --- |
| HKX03XC - 208 V | No Breaker | --- | --- | --- | --- | --- | --- | --- | --- |
| HKX05XC - 208 V | | 17.3 | 30.3 | 35 | --- | --- | --- | --- | --- |
| HKX06XC - 208 V | | 21.7 | 36 | 40 | --- | --- | --- | --- | --- |
| HKX08XC - 208 V | | 28.9 | 45 | 45 | --- | --- | --- | --- | --- |
| HKX10XC - 208 V | | 34.7 | 52 | 60 | --- | --- | --- | --- | --- |
| HKSC05XC - 208 V | Breaker | 17.3 | 30.3 | 35 | --- | --- | --- | --- | --- |
| HKSC08XC - 208 V | | 28.9 | 45 | 45 | --- | --- | --- | --- | --- |
| HKSC10XC - 208 V | | 34.7 | 52 | 60 | --- | --- | --- | --- | --- |
| HKSC15XB ³ - 208 V | | 34.7 | 52 | 60 | 17.3 | 21.7 | 25 | 73.6 | 80 |
| HKSC19CH - 208 V | | 34.7 | 52 | 60 | 34.7 | 43.3 | 45 | 95.3 | 100 |
| HKSC15XF - 208 V ^ | | 0 | 8.6 | 15 | 30 | 37.5 | 40 | --- | --- |
| HKSC20XF - 208 V ^ | | --- | --- | --- | --- | --- | --- | --- | --- |

See notes on page 17.

HEAT KIT DATA (CONT.)

| HEATER KIT MODEL | | CIRCUIT 1 | | | CIRCUIT 2 | | | SINGLE-POINT KIT | |
|-------------------------------|------------|-------------|------------------|------------------|-------------|------------------|------------------|------------------|------------------|
| | | HEATER AMPS | MCA ¹ | MOP ² | HEATER AMPS | MCA ¹ | MOP ² | MCA ¹ | MOP ² |
| HKSX03XC - 240 V | No Breaker | --- | --- | --- | --- | --- | --- | --- | --- |
| HKSX05XC - 240 V | | 20 | 34 | 35 | --- | --- | --- | --- | --- |
| HKSX06XC - 240 V | | 25 | 39.9 | 40 | --- | --- | --- | --- | --- |
| HKSX08XC - 240 V | | 33.3 | 50.3 | 60 | --- | --- | --- | --- | --- |
| HKSX10XC - 240 V | | 40 | 58.6 | 60 | --- | --- | --- | --- | --- |
| HKSC05XC - 240 V | Breaker | 20 | 34 | 35 | --- | --- | --- | --- | --- |
| HKSC08XC - 240 V | | 33.3 | 50.3 | 60 | --- | --- | --- | --- | --- |
| HKSC10XC - 240 V | | 40 | 58.6 | 60 | --- | --- | --- | --- | --- |
| HKSC15XB - 240 V | | 40 | 58.6 | 60 | 20 | 25 | 25 | 83.6 | 90 |
| HKSC19CB - 240 V | | 40 | 58.6 | 60 | 40 | 50 | 50 | 108.6 | 110 |
| HKSC15XF - 240 V ^ | | 0 | 8.6 | 15 | 34.6 | 43 | 45 | --- | --- |
| HKSC20XF - 240 V ^ | --- | --- | --- | --- | --- | --- | --- | --- | |
| AVPTC59D14AC | | 0/0 | 8.6/8.6 | 15/15 | --- | --- | --- | --- | --- |
| HKSX03XC - 208 V | No Breaker | --- | --- | --- | --- | --- | --- | --- | --- |
| HKSX06XC - 208 V | | 21.7 | 36 | 40 | --- | --- | --- | --- | --- |
| HKSX08XC - 208 V | | 28.9 | 45 | 45 | --- | --- | --- | --- | --- |
| HKSX10XC - 208 V | | 34.7 | 52 | 60 | --- | --- | --- | --- | --- |
| HKSC05XC - 208 V | Breaker | 17.3 | 30.3 | 35 | --- | --- | --- | --- | --- |
| HKSC08XC - 208 V | | 28.9 | 45 | 45 | --- | --- | --- | --- | --- |
| HKSC10XC - 208 V | | 34.7 | 52 | 60 | --- | --- | --- | --- | --- |
| HKSC15XB ³ - 208 V | | 34.7 | 52 | 60 | 17.3 | 21.7 | 25 | 73.6 | 80 |
| HKSC20DH - 208 V | | 34.7 | 52 | 60 | 34.7 | 43.3 | 45 | 95.3 | 100 |
| HKSC15XF - 208 V ^ | | 0 | 8.6 | 15 | 30 | 37.5 | 40 | --- | --- |
| HKSC20XF - 208 V ^ | 0 | 8.6 | 15 | 37.5 | 47 | 50 | --- | --- | |
| HKSX03XC - 240 V | No Breaker | --- | --- | --- | --- | --- | --- | --- | --- |
| HKSX05XC - 240 V | | 20 | 34 | 35 | --- | --- | --- | --- | --- |
| HKSX06XC - 240 V | | 25 | 39.9 | 40 | --- | --- | --- | --- | --- |
| HKSX08XC - 240 V | | 33.3 | 50.3 | 60 | --- | --- | --- | --- | --- |
| HKSX10XC - 240 V | | 40 | 58.6 | 60 | --- | --- | --- | --- | --- |
| HKSC05XC - 240 V | Breaker | 20 | 34 | 35 | --- | --- | --- | --- | --- |
| HKSC08XC - 240 V | | 33.3 | 50.3 | 60 | --- | --- | --- | --- | --- |
| HKSC10XC - 240 V | | 40 | 58.6 | 60 | --- | --- | --- | --- | --- |
| HKSC15XB - 240 V | | 40 | 58.6 | 60 | 20 | 25 | 25 | 83.6 | 90 |
| HKSC20DB - 240 V | | 40 | 58.6 | 60 | 40 | 50 | 50 | 108.6 | 110 |
| HKSC15XF - 240 V ^ | | 0 | 8.6 | 15 | 34.6 | 43 | 45 | --- | --- |
| HKSC20XF - 240 V ^ | 0 | 8.6 | 15 | 43 | 54 | 60 | --- | --- | |
| AVPTC61D14AC | | 0/0 | 8.6/8.6 | 15/15 | --- | --- | --- | --- | --- |
| HKSX03XC - 208 V | No Breaker | --- | --- | --- | --- | --- | --- | --- | --- |
| HKSX05XC - 208 V | | 17.3 | 30.3 | 35 | --- | --- | --- | --- | --- |
| HKSX06XC - 208 V | | 21.7 | 36 | 40 | --- | --- | --- | --- | --- |
| HKSX08XC - 208 V | | 28.9 | 45 | 45 | --- | --- | --- | --- | --- |
| HKSX10XC - 208 V | | 34.7 | 52 | 60 | --- | --- | --- | --- | --- |

See notes on page 17.

| HEATER KIT MODEL | | CIRCUIT 1 | | | CIRCUIT 2 | | | SINGLE-POINT KIT | |
|-------------------------------|------------|-------------|------------------|------------------|-------------|------------------|------------------|------------------|------------------|
| | | HEATER AMPS | MCA ¹ | MOP ² | HEATER AMPS | MCA ¹ | MOP ² | MCA ¹ | MOP ² |
| HKSC05XC - 208 V | Breaker | 17.3 | 30.3 | 35 | --- | --- | --- | --- | --- |
| HKSC08XC - 208 V | | 28.9 | 45 | 45 | --- | --- | --- | --- | --- |
| HKSC10XC - 208 V | | 34.7 | 52 | 60 | --- | --- | --- | --- | --- |
| HKSC15XB ³ - 208 V | | 34.7 | 52 | 60 | 17.3 | 21.7 | 25 | 73.6 | 80 |
| HKSC20DH - 208 V | | 34.7 | 52 | 60 | 34.7 | 43.3 | 45 | 95.3 | 100 |
| HKSC15XF - 208 V ^ | | 0 | 8.6 | 15 | 30 | 37.5 | 40 | --- | --- |
| HKSC20XF - 208 V ^ | | 0 | 8.6 | 15 | 37.5 | 47 | 50 | --- | --- |
| HKSC25DA - 208 V | | 52 | 73.6 | 80 | 34.7 | 43.3 | 45 | 117 | 125 |
| HKSX03XC - 240 V | No Breaker | --- | --- | --- | --- | --- | --- | --- | --- |
| HKSX05XC - 240 V | | 20 | 34 | 35 | --- | --- | --- | --- | --- |
| HKSX06XC - 240 V | | 25 | 39.9 | 40 | --- | --- | --- | --- | --- |
| HKSX08XC - 240 V | | 33.3 | 50.3 | 60 | --- | --- | --- | --- | --- |
| HKSX10XC - 240 V | | 40 | 58.6 | 60 | --- | --- | --- | --- | --- |
| HKSC05XC - 240 V | Breaker | 20 | 34 | 35 | --- | --- | --- | --- | --- |
| HKSC08XC - 240 V | | 33.3 | 50.3 | 60 | --- | --- | --- | --- | --- |
| HKSC10XC - 240 V | | 40 | 58.6 | 60 | --- | --- | --- | --- | --- |
| HKSC15XB - 240 V | | 40 | 58.6 | 60 | 20 | 25 | 25 | 83.6 | 90 |
| HKSC20DB - 240 V | | 40 | 58.6 | 60 | 40 | 50 | 50 | 108.6 | 110 |
| HKSC15XF - 240 V ^ | | 0 | 8.6 | 15 | 34.6 | 43 | 45 | --- | --- |
| HKSC20XF - 240 V ^ | | 0 | 8.6 | 15 | 43 | 54 | 60 | --- | --- |
| HKSC25DB - 240 V | | 60 | 84 | 90 | 40 | 50 | 50 | 133.6 | 150 |

¹ Minimum Circuit Ampacity (Heater Amps + Motor Amps) X 1.25

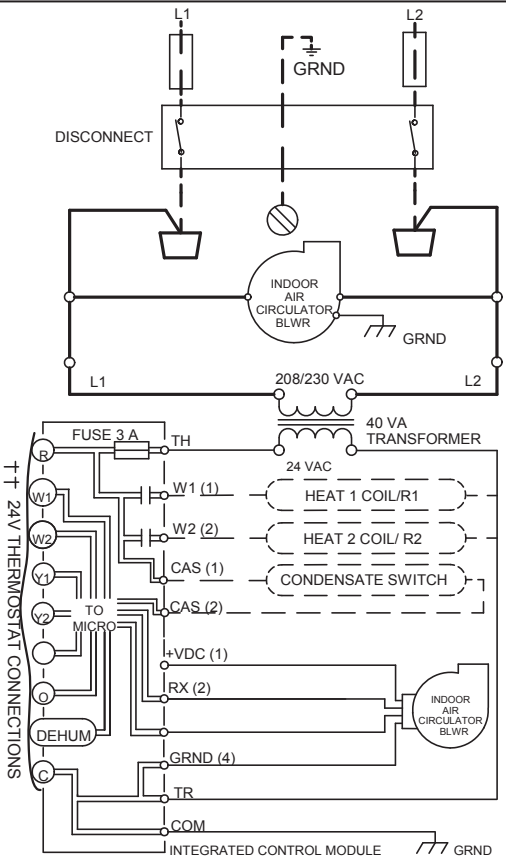
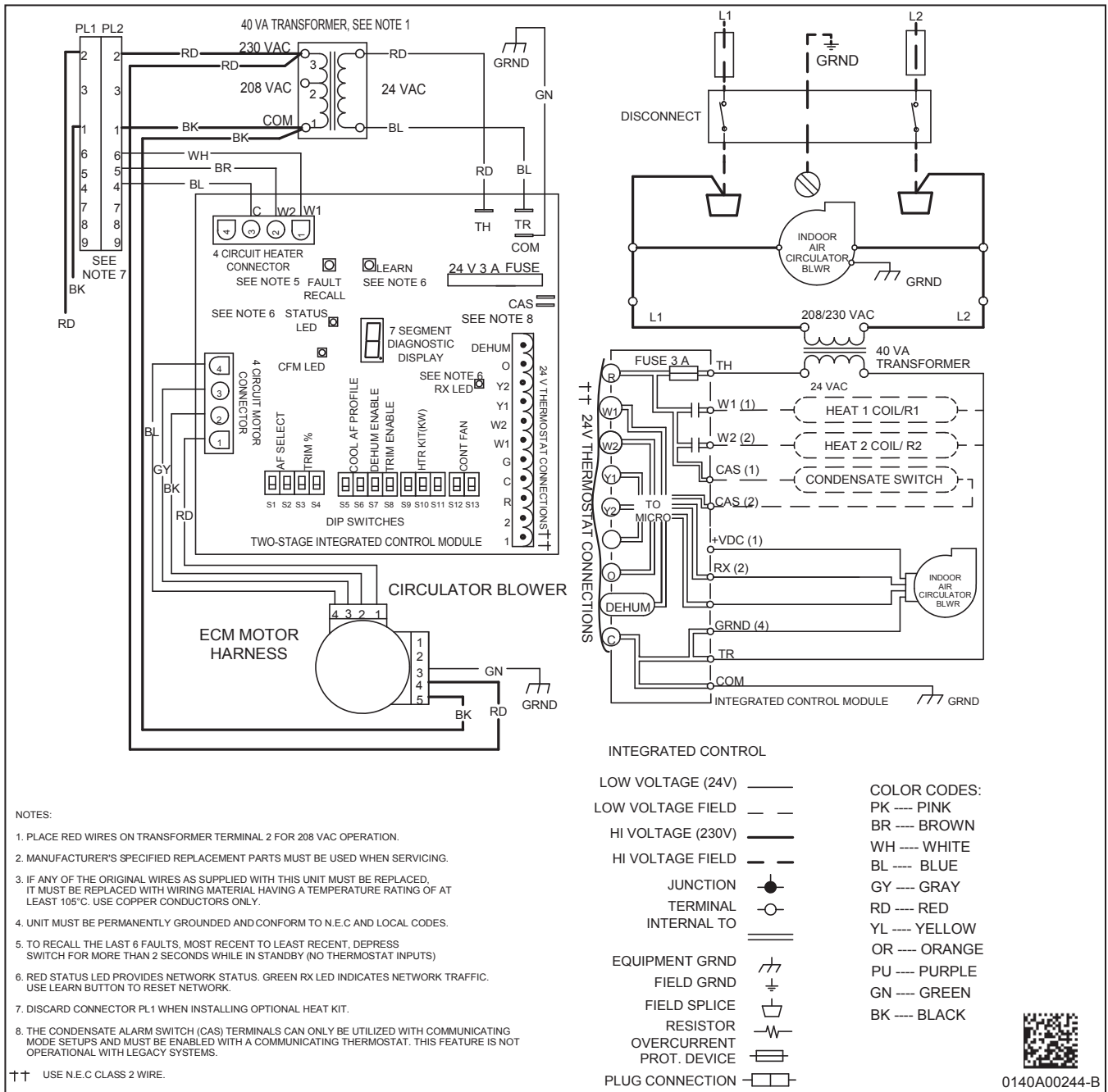
² Maximum Overcurrent Protection = 2.25 X Motor Amps + Heater Amps

[^] Circuit 1: Single-phase for Air Handlers Circuit 2: Three-phase for HKR3 Heater Kits

Note: The 208 or 240 in the heat kit part number field is for clarification of the nominal voltage for this model.

³Notation is correct as XB because technically the 240V heater kit application can be used here without any issues.

WIRING DIAGRAM – AIR HANDLER



INTEGRATED CONTROL

| | |
|----------------------------|---------------|
| LOW VOLTAGE (24V) ——— | COLOR CODES: |
| LOW VOLTAGE FIELD ——— | PK ——— PINK |
| HI VOLTAGE (230V) ——— | BR ——— BROWN |
| HI VOLTAGE FIELD ——— | WH ——— WHITE |
| JUNCTION ● | BL ——— BLUE |
| TERMINAL ○ | GY ——— GRAY |
| INTERNAL TO ≡ | RD ——— RED |
| EQUIPMENT GRND ⚡ | YL ——— YELLOW |
| FIELD GRND ⊥ | OR ——— ORANGE |
| FIELD SPLICE ⏏ | PU ——— PURPLE |
| RESISTOR ⏏ | GN ——— GREEN |
| OVERCURRENT PROT. DEVICE ⏏ | BK ——— BLACK |
| PLUG CONNECTION ——— | |

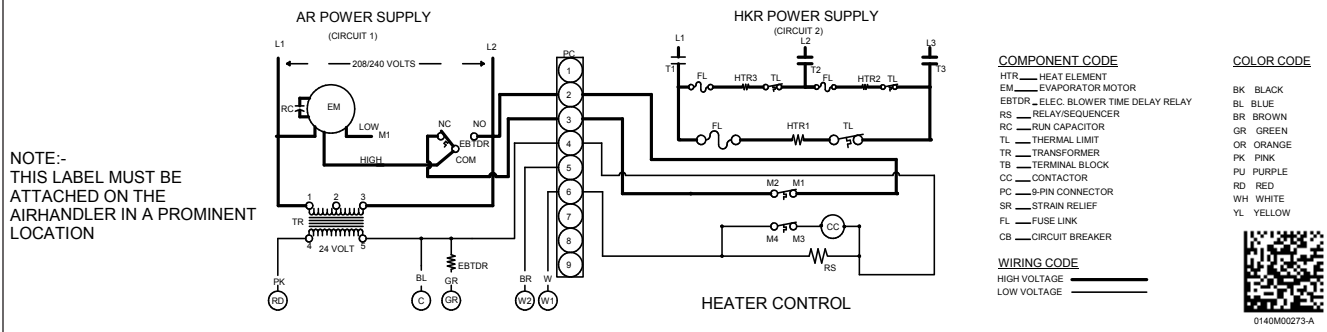
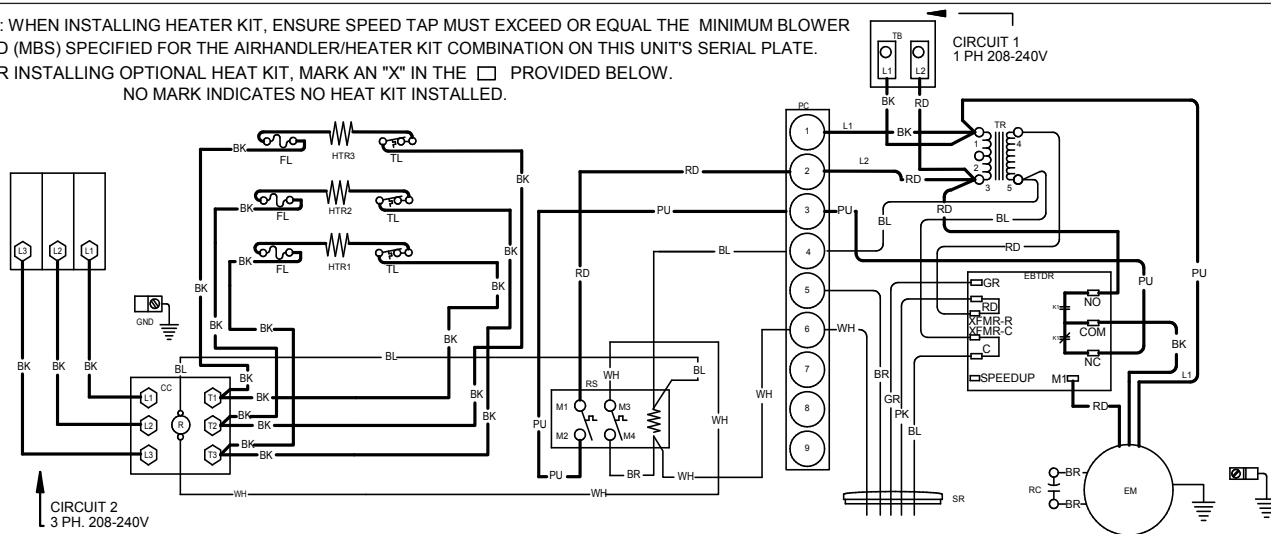


0140A00244-B



Wiring is subject to change. Always refer to the wiring diagram on the unit for the most up-to-date wiring.

| | | |
|----------------|---|--|
| WARNING | High Voltage: Disconnect all power before servicing or installing this unit. Multiple power sources may be present. Failure to do so may cause property damage, personal injury, or death. | |
|----------------|---|--|

NOTE: WHEN INSTALLING HEATER KIT, ENSURE SPEED TAP MUST EXCEED OR EQUAL THE MINIMUM BLOWER SPEED (MBS) SPECIFIED FOR THE AIRHANDLER/HEATER KIT COMBINATION ON THIS UNIT'S SERIAL PLATE.
 AFTER INSTALLING OPTIONAL HEAT KIT, MARK AN "X" IN THE PROVIDED BELOW.
 NO MARK INDICATES NO HEAT KIT INSTALLED.



Wiring is subject to change. Always refer to the wiring diagram on the unit for the most up-to-date wiring.

| | | |
|--|--|---|
|  WARNING | <p>High Voltage: Disconnect all power before servicing or installing this unit. Multiple power sources may be present. Failure to do so may cause property damage, personal injury, or death.</p> |  |
|--|--|---|

DOWNFLOW KITS

| DFK-B | DFK-C | DFK-D |
|--------------|--------------|--------------|
| AVPTC25B14** | AVPTC31C14** | AVPTC37D14** |
| AVPTC29B14** | AVPTC33C14** | AVPTC59D14** |
| AVPTC35B14** | AVPTC37C14** | AVPTC49D14** |
| AVPTC37B14** | AVPTC39C14** | AVPTC61D14** |
| | AVPTC49C14** | |
| | AVPTC59C14** | |

FILTERS

| CHASSIS | PART # | SIZE |
|---------|--------------|---------------|
| B | ALFH16201E | 16.0" x 20.0" |
| C | ALFH1912201E | 19.5" x 20.0" |
| D | ALFH20231E | 23.0" x 20.0" |

SINGLE POINT KIT **

| MODEL | HKR-15C | HKR-20C | HKR-21C |
|--------|---------|---------|---------|
| SPW-01 | X | X | X |

** Must be installed along with any of the above compatible heat kits. This kit will fit any AVPTC air handler as long as a compatible heat kit is installed in the unit.