

# *Small Diameter N-12<sup>®</sup> Pipe and Fittings*



THE MOST **ADVANCED** NAME IN WATER MANAGEMENT SOLUTIONS<sup>®</sup>





# SMALL DIAMETER N-12 PIPE AND FITTINGS

ADS offers a line of 4"-12" (100-300 mm) corrugated smooth interior high-density polyethylene (HDPE) pipe and injection molded fittings for maximum drainage service integrity. This means that the performance and cost-effective benefits of HDPE pipe can be used in a complete 4"-60" (100-1500 mm) system.

## THE ADVANTAGES OF POLYETHYLENE

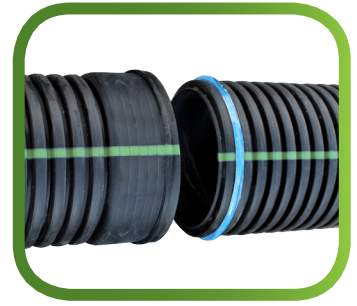
- **Better Impact Strength**  
HDPE is less brittle than PVC, particularly in cold temperatures. N-12 survives the impact of rocks in the backfill and the rigors of cold weather handling.
- **No Edge Beveling**  
N-12 pipe installs quickly because there is no need to bevel the pipe edge when making a joint.
- **Better Chemical & Abrasion Resistance**  
HDPE is unaffected by acidic and alkaline solutions as well as by soil hydrocarbons.
- **H-20 Traffic Load Rated**
- **Increased Pipe Stiffness**

Published Pipe Stiffness Values		
ID	N-12	PVC SDR 35
4" (100 mm)	50 pii (345 kPa)	46 pii (320 kPa)
6" (150 mm)	50 pii (345 kPa)	46 pii (320 kPa)
8" (200 mm)	50 pii (345 kPa)	46 pii (320 kPa)
10" (250 mm)	50 pii (345 kPa)	46 pii (320 kPa)
12" (300 mm)	50 pii (345 kPa)	46 pii (320 kPa)

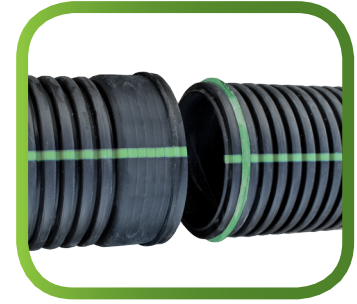
## APPLICATIONS

Small diameter N-12 makes possible a complete drainage system from the top of the building to the storm sewer including:

- Roof drains
- Foundation lines
- Collector pipe
- Roadway edge drains
- Construction site dewatering



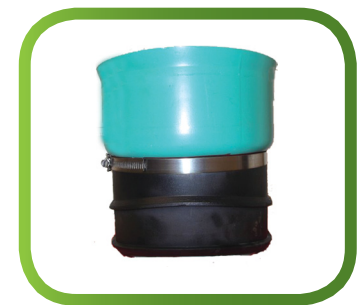
**N-12<sup>®</sup> WT**



**MEGA GREEN<sup>®</sup> WT**



**Nyloplast<sup>®</sup> Fittings**



**INSERTA TEE<sup>®</sup>**

## READILY AVAILABLE



## WATERTIGHT PERFORMANCE

N-12 WT pipe and fittings meet or exceed watertight requirements of ASTM D3212 – the standard for ALL thermoplastic gravity flow pipes including PVC. To assure watertightness, field performance verification may be accomplished by testing in accordance with ASTM F1417.

## APPLICABLE SPECIFICATIONS

- Uniform Plumbing Code (UPC) – “Subsoil Drains” under Chapter 11, Storm Drainage. See Section 1101.4.6 Subsoil Drains, Table 1101.4.6 in image of 2018 standard.
- International Code Council’s (ICC), International Plumbing Code (IPC): 2018 Update – Table 1102.4
- AASHTO M252 - 3”-10” (75 to 250 mm) Corrugated Polyethylene Drainage Pipe
- AASHTO M294 - 12”-60” (300 to 1500 mm) Corrugated Polyethylene Pipe
- ASTM F2648 - 2”-60” (50 to 1500 mm) Annular Corrugated Profile Wall PE Pipe and Fittings for Land Drainage
- ASTM F667 - 3”-24” (75 to 600 mm) Corrugated Polyethylene Pipe and Fittings
- CSA B182.8 - 4”-60” (100 to 1500 mm) Profile Polyethylene (PE) Storm Sewer and Drainage Pipe and Fittings

## SUSTAINABILITY

The 2018 Life Cycle Assessment of North American Municipal Stormwater Pipe Systems shows that corrugated HDPE pipe has the lowest global warming potential when compared with other pipe materials. At ADS, sustainability is at the core of who we are and what we do.



Our MEGA GREEN™  
pipe contains >60%  
recycled HDPE  
material



>400 million  
pounds  
of plastic is kept from  
landfills each year



6th Largest  
Recycling  
Company  
in North America

# WATERTIGHT FITTINGS (Includes ASTM F477 gasket for attachment on pipe end)

## COUPLER, BELL/BELL



Size	Code
4" (100 mm)	0413WT
6" (150 mm)	0613WT
8" (200 mm)	0813WT
10" (250 mm)	1013WT

## REDUCING COUPLER, BELL/BELL



Size	Code
6" x 4" (150 x 100 mm)	0614WT
8" x 4" (200 x 100 mm)	0814WT
8" x 6" (200 x 150 mm)	0816WT
10" x 8" (250 x 200 mm)	1018WT
12" x 8" (300 x 200 mm)	1218WT
12" x 10" (300 x 250 mm)	1210WT

## REDUCING COUPLER, SPIGOT/BELL



Size	Code
6" x 4" (150 x 100 mm)	0674WT
8" x 4" (200 x 100 mm)	0874WT
8" x 6" (200 x 150 mm)	0876WT

## END CAP, BELL



Size	Code
4" (100 mm)	0432WT
6" (150 mm)	0632WT

## TEE, BELL/BELL



Size	Code
4" (100 mm)	0460WT
6" x 4" (150 x 100 mm)	0660WT
6" (150 mm)	0661WT
8" (200 mm)	0862WT
10" x 4" (250 x 100 mm)	1060WT*
10" x 8" (250 x 200 mm)	1062WT
10" (250 mm)	1063WT
12" x 4" (300 x 100 mm)	1260WT*
12" x 8" (300 x 200 mm)	1262WT
12" x 10" (300 x 250 mm)	1263WT*
12" (300 mm)	1264WT

## SWEEPING TEE



Size	Code
8" x 4" (200 x 100 mm)	0863WT
8" x 6" (200 x 150 mm)	0836WT
10" x 6" (250 x 150 mm)	1036WT
12" x 6" (300 x 150 mm)	1236WT

## 45° ELBOW, BELL/BELL



Size	Code
4" (100 mm)	0494WT
6" (150 mm)	0694WT
8" (200 mm)	0894WT
10" (250 mm)	1094WT
12" (300 mm)	1294WT

## 45° WYE, BELL/BELL



Size	Code
4" (100 mm)	0480WT
6" x 4" (150 x 100 mm)	0680WT
6" (150 mm)	0681WT
8" x 4" (200 x 100 mm)	0880WT
8" x 6" (200 x 150 mm)	0881WT
8" (200 mm)	0882WT
10" x 4" (250 x 100 mm)	1080WT*
10" x 6" (250 x 150 mm)	1081WT*
10" x 8" (250 x 200 mm)	1082WT
10" (250 mm)	1083WT
12" x 4" (300 x 100 mm)	1280WT*
12" x 6" (300 x 150 mm)	1281WT
12" x 8" (300 x 200 mm)	1282WT
12" x 10" (300 x 250 mm)	1283WT*
12" (300 mm)	1284WT

## 90° ELBOW, BELL/BELL



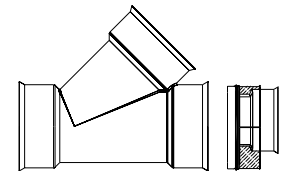
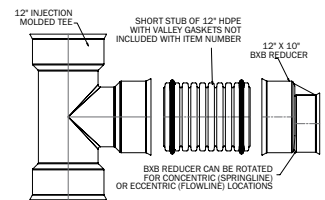
Size	Code
4" (100mm)	0499WT
6" (150mm)	0699WT
8" (200mm)	0899WT
10" (250mm)	1099WT
12" (300mm)	1299WT

\* See Watertight fitting kits notes below

# WATERTIGHT FITTING KIT

TEE SIZE	CONSISTS OF	TEE + REDUCER	PROD. CODE
Tee, 10" x 4" (250 mm x 100 mm)	1062WT 10" x 8" +	0874WT 8" x 4"	1060WT
Tee, 12" x 4" (300 mm x 100 mm)	1262WT 12" x 8" +	0874WT 8" x 4"	1260WT
Tee, 12" x 10" (300 mm x 250 mm)	1264WT 12" +	1210WT 12" x 10"	1263WT <sup>1,2</sup>

WYE SIZE	CONSISTS OF	WYE + REDUCER	PROD. CODE
Wye, 10" x 4" (250 mm x 100 mm)	1082WT 10" x 8" +	0874WT 8" x 4"	1080WT
Wye, 10" x 6" (250 mm x 150 mm)	1082WT 10" x 8" +	0876WT 8" x 6"	1081WT
Wye, 12" x 4" (300 mm x 100 mm)	1282WT 12" x 8" +	0874WT 8" x 4"	1280WT
Wye, 12" x 10" (300 mm x 250 mm)	1284WT 12" +	1210WT 12" x 10"	1283WT <sup>3</sup>



<sup>1</sup> Additional pipe stub not shipped with item number. Order this pipe separately.

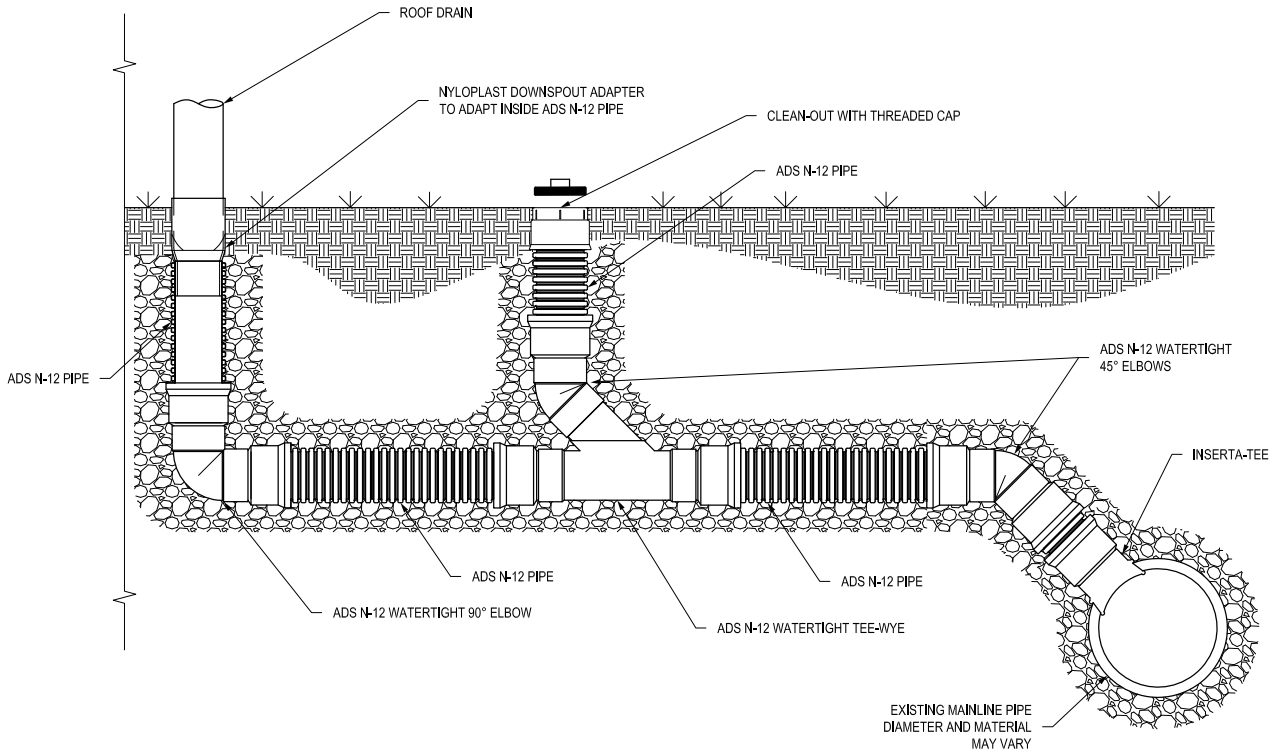
<sup>2</sup> **12" x 10" Tee:** order 1264 (WT or ST) 12" x 12" Tee, 1210WT 12" x 10" Bell/Bell Reducer, and approximately 15' of 12" diameter dual wall pipe to make the connection between the two bell ends.

<sup>3</sup> **12" x 10" Wye:** order 1284 (WT or ST) 12" x 12" Wye, 1210WT 12" x 10" Bell/Bell Reducer, and approximately 15' of 12" diameter dual wall pipe to make the connection between the two bell ends.

## ADDITIONAL CONNECTION OPTIONS

Besides injection molded HDPE fittings, ADS offers a full line of products to make your small diameter pipe connections watertight, fast, and economical. Nyloplast provides a complete offering of PVC fittings, including downspout connections and cleanouts, that are adaptable to just about any pipe material including HDPE. Connections to the main pipelines of all diameters are also made easy with INSERTA TEE taps to connect 4"-24" (100-600 mm) diameter laterals pipes.

### NYLOPLAST DOWNSPOUT ADAPTER WITH CLEAN OUT AND INSERTA TEE



### INSERTA TEE TEE TAP DIAMETER

Mainline Pipe Diameter	4" (100 mm) INSERTA TEE Tap Diameter	6" (150 mm) INSERTA TEE Tap Diameter	8" (200 mm) INSERTA TEE Tap Diameter
12-15" (300-375 mm)	4N12MF12-15N12	6N12MF12-15N12	8N12MF12-15N12
18-24" (450-600 mm)	4N12MF18-24N12	6N12MF18-24N12	8N12MF18-24N12
30-48" (750-1200 mm)	4N12MF30-48N12	6N12MF30-48N12	8N12MF30-48N12
54-60" (1350-1500 mm)	4N12MF54-60N12	6N12MF54-60N12	8N12MF54-60N12

### DOWNSPOUT ADAPTERS

Product Description	Part Number
4x4x4" (100x100x100 mm) Downspout Adapter	0444FH
4x6x6" (100x150x150 mm) Downspout Adapter	0466FH
6x6x6" (150x150x150 mm) Downspout Adapter	0666FH
6x6x8" (150x150x200 mm) Downspout Adapter	0668FH
8x8x8" (200x200x200 mm) Downspout Adapter	0888FH

### CLEAN OUTS

Product Description	Part Number
4" (100 mm) Clean Out	0474AG
6" (150 mm) Clean Out	0674AG
8" (200 mm) Clean Out	0874AG
10" (250 mm) Clean Out	1074AG
12" (300 mm) Clean Out	1274AG

ADS "Terms and Conditions of Sale" are available on the ADS website, [www.ads-pipe.com](http://www.ads-pipe.com)  
Advanced Drainage Systems, the ADS logo, the Green Stripe, and N-12® are registered trademarks of  
Advanced Drainage Systems, Inc. Nyloplast is a registered trademark of Nyloplastm Inc. INSERTA TEE  
is a registered trademark of Inserta Fittings, Inc.  
© 2019 Advanced Drainage Systems, Inc. #10484 04/19 CS



Advanced Drainage Systems, Inc.  
4640 Trueman Blvd. Hilliard, OH 43026

1-800-821-6710

[www.ads-pipe.com](http://www.ads-pipe.com)

[www.ads-pipcanada.ca](http://www.ads-pipcanada.ca)

THE MOST **ADVANCED** NAME IN WATER MANAGEMENT SOLUTIONS®

