

Heavy Duty Singlewall Pipe

Heavy Duty singlewall pipe delivers superior value while providing physical strength and structural design that cannot be matched by metal or concrete. Heavy Duty pipe is lightweight, which allows for easier handling for faster, less costly installations.

Applications

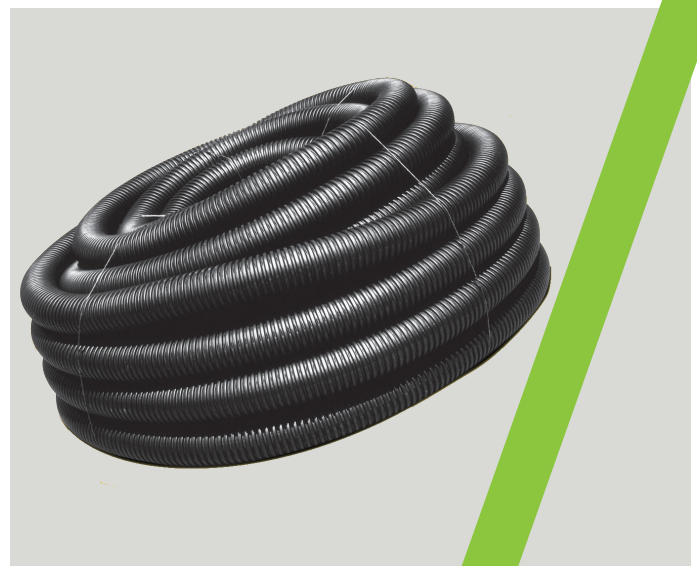
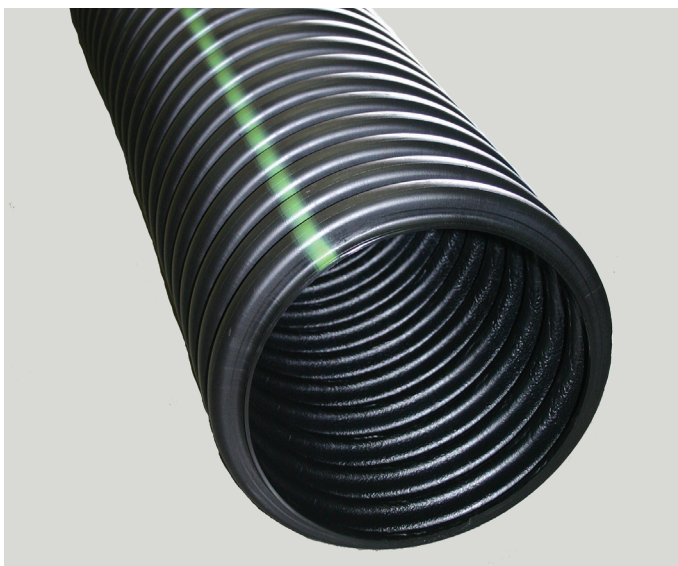
- Culverts
- Paths & walkway drains
- Landscape/subdrainage
- Golf courses
- Sports playing fields
- Grain aeration
- Pond overflows & dams
- Parking lots
- Field drainage
- Slope/edge/foundation drains
- Downspouts/roof drainage
- Waterway terracing
- Land reclamation
- Irrigation ditch enclosures

Features

- Available in various coil lengths for 3"-12" (75-300 mm) diameter pipe
- 6"-24" (200-600 mm) diameter pipe is available in 20' (6 m) lengths
- HS-25 (highway traffic loads) rated with a minimum of 12" (300 mm) of cover
- Meets soil-tight joint performance requirements - gasketed or non-gasketed split coupler and internal and external snap couplers are available

Benefits

- Longer lengths, which vary by diameter, result in fewer joints - pipe can be cut easily to the desired length in the field
- Easy-to-handle pipe requires less labor and equipment for fast installation and reduced costs
- Provides superior resistance to chemicals, road salts, motor oil and gasoline
- Withstands repeated freeze/thaw cycles and continuous sub-zero temperatures- will not deteriorate or crumble



ADS Heavy Duty Pipe Specification

Scope

This specification describes 3-through 24-inch (75 to 600 mm) single wall high density corrugated polyethylene heavy duty pipe for use in gravity-flow land drainage applications.

Pipe Requirements

ADS single wall high density corrugated polyethylene highway pipe shall have annular interior and exterior corrugations.

- 3-through 24-inch (75 to 600 mm) pipe shall meet ASTM F667

Joint Performance

Joints for 3- to 24-inch (75-600 mm) shall be made with split or snap couplings. Standard connection shall meet the soil-tightness requirements of ASTM F667. Gasketed connections shall incorporate a closed-cell synthetic expanded rubber gasket meeting the requirements of ASTM D1056 Grade 2A2. Gaskets, when applicable, shall be installed by the pipe manufacturer.

Fittings

Fittings shall conform to ASTM F667.

Material Properties

Pipe and fittings shall be high-density polyethylene conforming with the minimum requirements of cell classification 323410C or 333410C as defined and described in the latest version of ASTM D3350.

Installation

Installation shall be in accordance with ASTM D2321 and ADS' recommended installation guidelines, with the exception that minimum cover in trafficked areas for 3- through 24-inch (75 to 600 mm) diameters shall be one foot (0.3 m). Maximum fill heights depend on embedment material and compaction level; please refer to Technical Note 2.03. Contact your local ADS representative or visit our website adspipe.com for a copy of the latest installation guidelines.

Pipe Dimensions

Nominal Diameter										
Pipe I.D. in (mm)	3 (75)	4 (100)	5 (125)	6 (150)	8 (200)	10 (250)	12 (300)	15 (375)	18 (450)	24 (600)
Pipe O.D. in (mm) *	3.6 (91)	4.6 (117)	5.8 (147)	7.0 (178)	9.5 (241)	12.0 (305)	14.5 (368)	18.0 (457)	22.0 (559)	28.0 (711)

*Pipe O.D. values are provided for reference purposes only, values stated for 12- through 24-inch are ± 1 inch. Contact a sales representative for exact values.
All diameters available with or without perforations.

