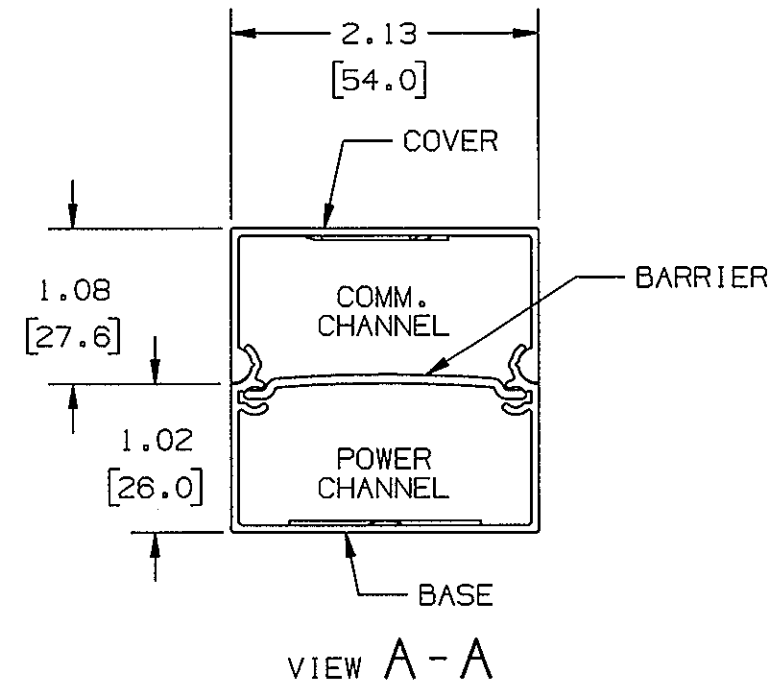
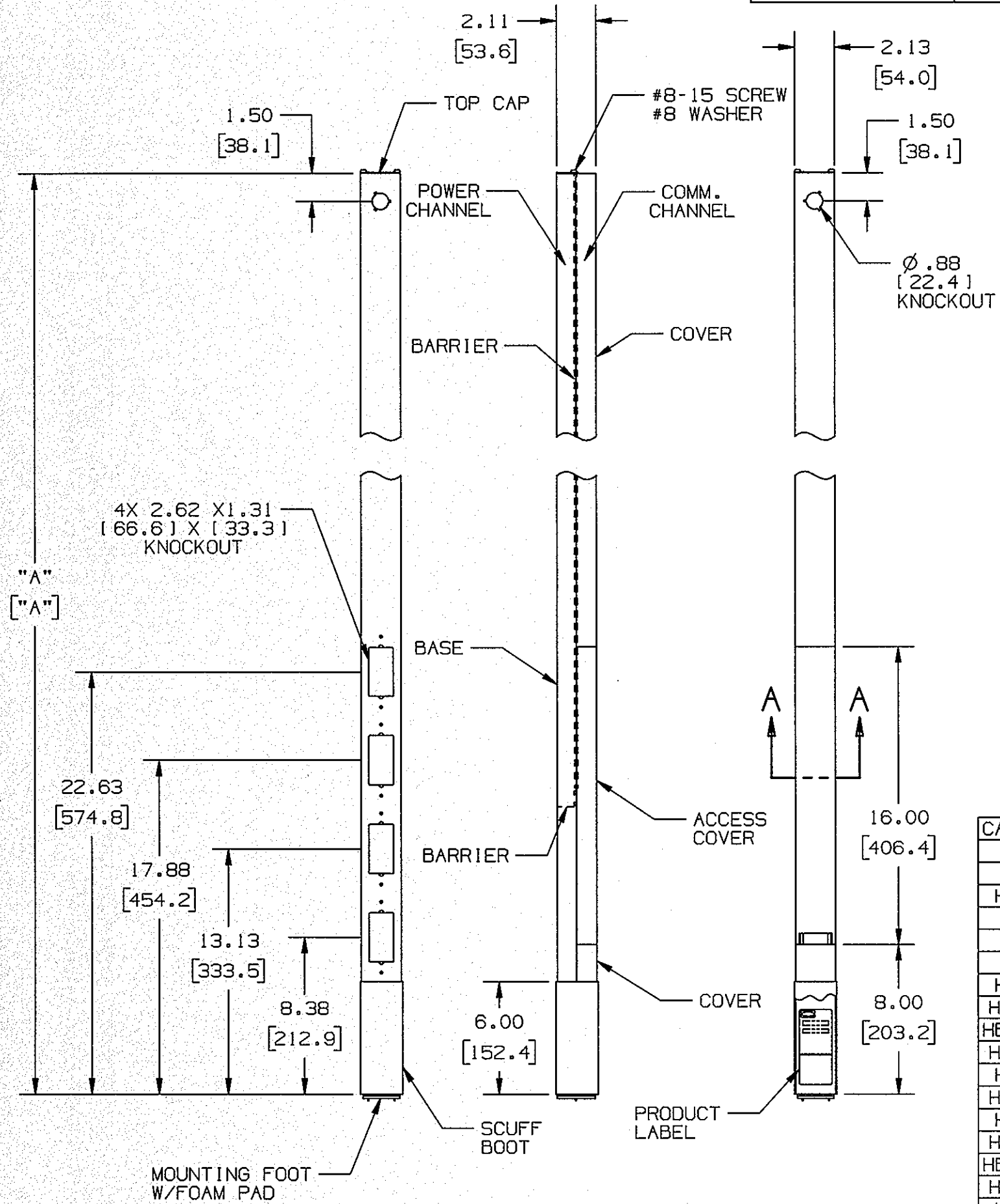


M-7831 6



NOTES:
 1. DIMS. ARE IN INCHES.
 [mm]
 2. COMES WITH TRIM KIT.

CATALOG NO.	COLOR	DIM. "A"
HBLPPOA	GRAY	122.00 [3098.8]
HBLPPOAI	IVORY	
HBLPPOAAL	SATIN FINISH ALUM	
HBLPPOBK	BLACK	146.00 [3708.4]
HBLPPOW	WHITE	
HBLPPOOW	OFFICE WHITE	
HBLPPO12A	GRAY	
HBLPPO12AI	IVORY	182.00 [4622.8]
HBLPPO12AAL	SATIN FINISH ALUM	
HBLPPO12BK	BLACK	
HBLPPO12W	WHITE	
HBLPPO12OW	OFFICE WHITE	
HBLPPO15A	GRAY	
HBLPPO15AI	IVORY	
HBLPPO15AAL	SATIN FINISH ALUM	
HBLPPO15BK	BLACK	
HBLPPO15W	WHITE	
HBLPPO15OW	OFFICE WHITE	

DESCRIPTION	MATERIAL	FINISH

6	ADDED CAT NOS.; HBLPPOBK, HBLPPOW, HBLPPOOW, HBLPPO12BK, HBLPPO12W, HBLPPO12OW, HBLPPO15BK, HBLPPO15W, HBLPPO15OW AND SPECS. TO TABLE. PER DCN 21632	DDL	09/01/15
5	IN TABLE, REACTIVATED HBLPPOAAL PER DCN 13794 RCM	CZH	4/12/07
4	IN TABLE, CROSSHATCHED HBLPPOAAL TO INDICATE CAT. IS OBSOLETE. HBLPPO12AAL AND HBLPPO115AAL SATIN FINISH ALUM WAS ANODIZED ALUM. IN TITLE, ADDED STANDARD PER DCN 13579 SPN	CZH	1/8/07
3	"A" WAS 122.00; ADDED HBLPPOAAL, HBLPPO12A, HBLPPO12AI, HBLPPO12AAL, HBLPPO15A, HBLPPO15AI, HBLPPO15AAL; ADDED NOTES 1&2 PER DCN 13044 RCM	CZH	4/7/06
SYM	REVISIONS	APP	DATE

THE DESIGN AND DIMENSIONS OF THE PRODUCT SHOWN ON THIS DRAWING ARE SUBJECT TO CHANGE WITHOUT NOTICE			
TITLE STANDARD SERVICE POLES			
TOLERANCES UNLESS OTHERWISE SPECIFIED		WIRING DEVICE-KELLEMS HUBBELL INCORPORATED SHELTON, CT	
.XX = ±.01		DR. BY RCM	
.XXX = ±.005		APP. BY CZH	
ANGLES = ±2°		TR. BY	
		SCALE NONE	
		CHK. BY CZH	
		DATE 11/19/97	

DIMENSION SHEET FOR CAT. NO. M-7831
 SEE TABLE
 REPAIRABLE
 NON-REPAIRABLE B
 M-7831
