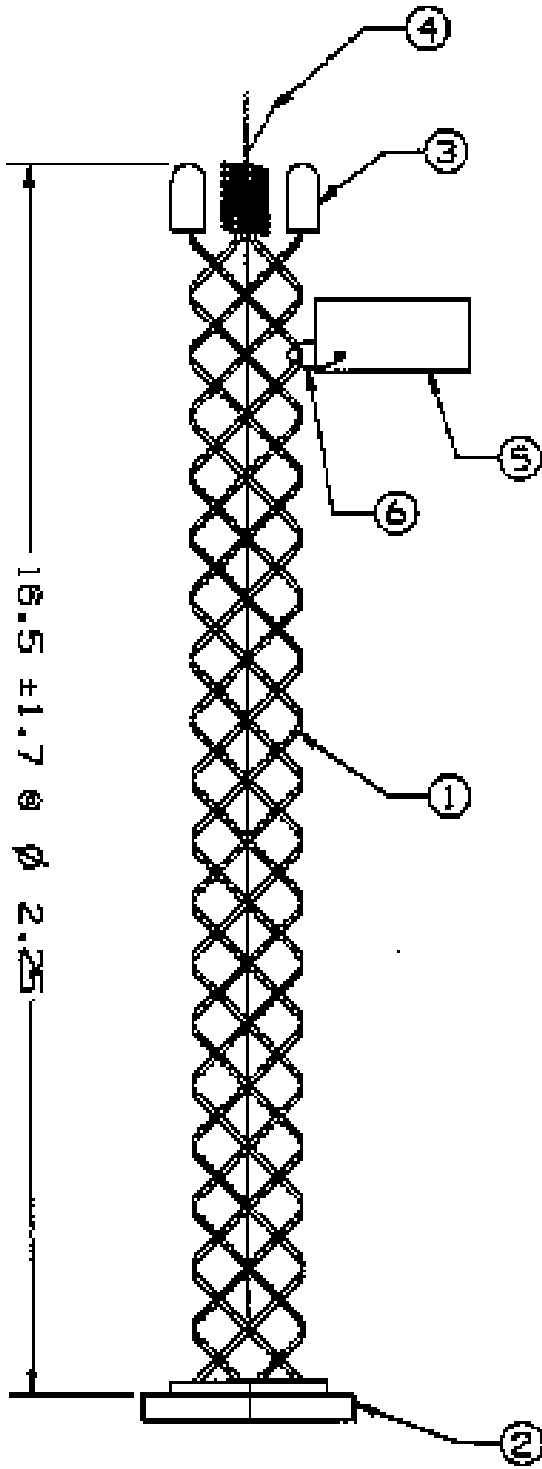


COMPONENT LIST

ITEM NO.	DESCRIPTION	MAT'L	COMPONENT NO.	QTY.
1	MESH	T BRZ	302-01-005	-
2	RING	BRZ	482-51-0341	1
3	END TAB	GV	312-43-057	8
4	LACE	T BRZ	302-74-007	2
5	TAG	MYLAR		1
6	TIE WRAP	PLASTIC	316-20-001	1



SUPERSEDES DWG DATED 12/28/72

IN ACCEPTING OUR DRAWINGS OR BLUEPRINTS FOR QUOTATION OR OTHER PURPOSES, YOU AGREE NOT TO DISCLOSE TO OTHERS THE IDEAS, INFORMATION, OR DESIGNS THEREIN SHOWN, AND THAT YOU WILL MAKE NO USE OF OUR DRAWINGS OR BLUEPRINTS OR OF THE IDEAS, INFORMATION, OR DESIGNS THEREIN SHOWN WITHOUT OUR PERMISSION.

TITLE
 GRIP, CONDUIT RISER SUPPORT
 SPLIT MESH LACE CLOSING,
 DOUBLE WEAVE, FOR 3" CONDUIT
 DIA. RA. 2.00 - 2.49
 DESCR. C 3 - RS 200
 APPROX BRK,STR, 4300±20%

TOLERANCES UNLESS OTHERWISE SPECIFIED .XX = ±.010 .XXX = ±.005 .XXXX = ±.0025 ANGLE TOL. ± 1°	HUBBELL INCORPORATED WELLESB DIVISION STORINGTON, CT
PROJECT NO.	DR. BY CJA APP. BY FFB TR. BY RCM SCALE NONE CHK. BY TCM DATE 4/12/95

DR. NO.	REV.
022-12-026	G