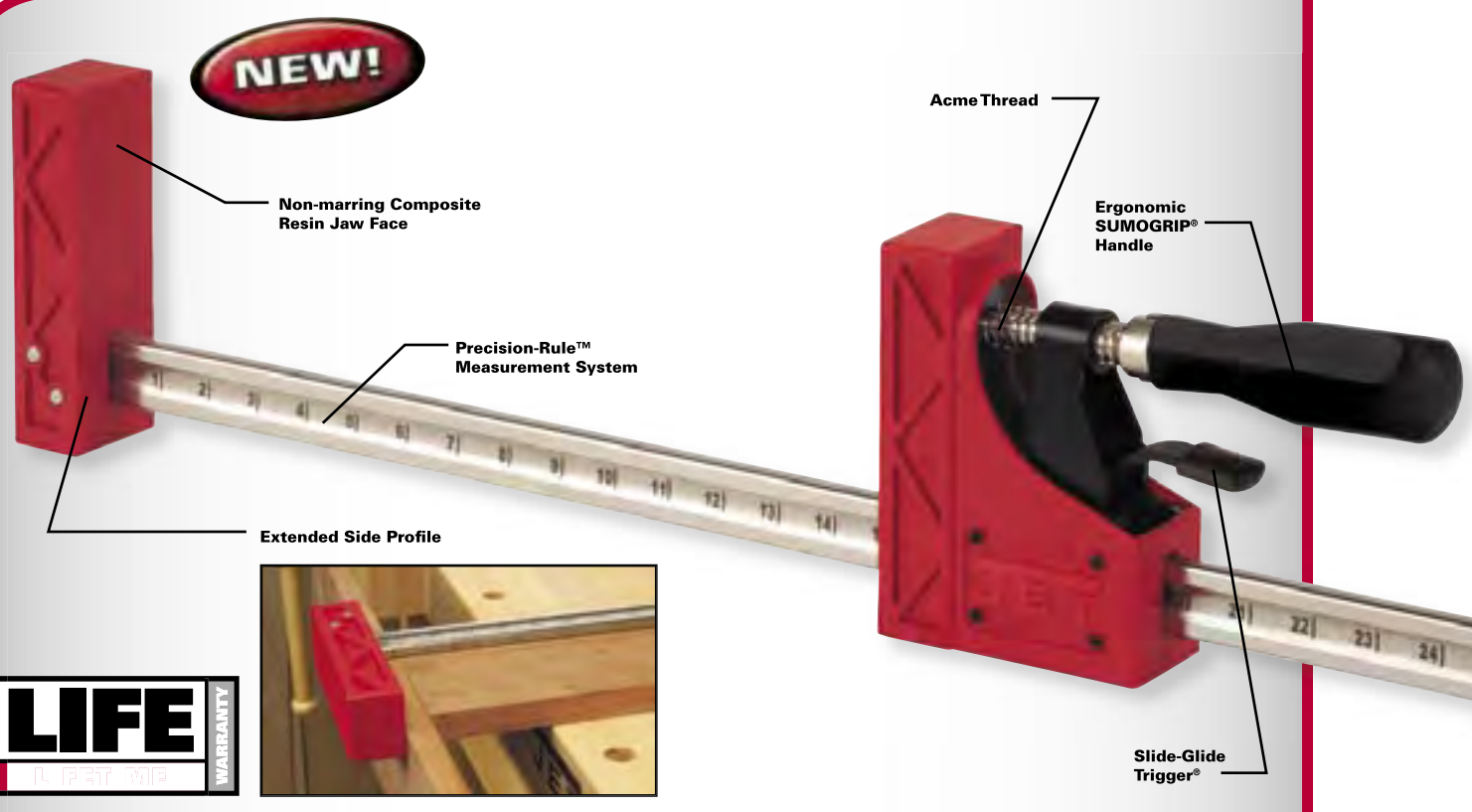




# JET HAND TOOLS

Parallel Clamps .....	218
Mixer / Cutters .....	220
Wrenches .....	222
Tap and Die Sets .....	226
Anvils / Vises .....	227



PARALLEL CLAMP

- Exclusive design (patent pending) provides precision and power with exact 90 degree clamping at up to 1000 lbs. pressure
- Precision-Rule™ measurement system (patent pending) provides a consistent setup and quick identification of opening capacity
- Slide-Glide trigger (patent pending) makes precise adjustments rapidly and easily
- Ergonomic SUMOGRIP® handle integrated with soft grip for added comfort and increased torque
- Moveable rail stand/end stop helps preset clamping capacity rapidly and accurately
- Non-marring composite resin jaw faces  
Glue resistant in design, ensure even clamping pressure
- Reversible clamping movable jaw can be reversed to be used as a spreader
- Side profile allows narrow clamping on the side of the jaw face
- Acme threaded handle turns easily and applies continuous pressure



**CROSS DOC™ FRAMING BLOCKS**  
The Cross Doc™ Framing Blocks can be used for gluing rectangular frames at four points safely and securely. Four mounting holes guarantee a permanent setup. (70401 see accessory and kits chart below)

**2" BENCH DOGS**  
JET Bench Dogs can be used to maximize clamp stability anywhere and their aluminum design make them built for extended durability and stability. (70402 see accessory and kits chart below)

STOCK NUMBER	DESCRIPTION	STANDARD PACK	CLAMP CAPACITY (IN.)	SPREAD CAPACITY (IN.)	THROAT DEPTH (IN.)	CLAMP PRESSURE (LBS.)	SHIP WEIGHT (LBS.)
70412	12" Parallel Clamp	2	12	19	4-1/8	1000	5-1/2
70424	24" Parallel Clamp	2	24	31	4-1/8	1000	6-1/2
70431	31" Parallel Clamp	2	31	38	4-1/8	1000	7
70440	40" Parallel Clamp	2	40	47	4-1/8	1000	8
70450	50" Parallel Clamp	2	50	57	4-1/8	1000	9-1/2
70460	60" Parallel Clamp	2	60	67	4-1/8	1000	10-1/2
70482	82" Parallel Clamp	2	82	89	4-1/8	1000	12-1/2
70498	98" Parallel Clamp	2	98	105	4-1/8	1000	14

Accessories and Kits

STOCK NUMBER	DESCRIPTION	STANDARD PACK	SHIP WEIGHT (LBS.)
70401	Cross Doc™ Framing Blocks (4 pk)	4	1-1/2
70402	Bench Dogs (4 pk)	4	.4
70411	Clamp Kit: 24" Clamp (2), 40" Clamp (2), Cross Doc™ (4), Bench Dogs (4)	2	31

See the JET Woodworking Catalog for More Products.







**PORTABLE UTILITY MIXER**

- Motor mount slotted for 2HP gasoline engine
- Large 3.5 cubic foot capacity drum with replaceable tines
- Handles two 90 lb. Bags of dry cement or mortar with ease
- Sealed ball bearings support drum rotation which insures low maintenance and long life
- Spring-loaded handle and slotted locking plate secure tip angle of the drum
- Drum tips 360



STOCK NUMBER	MODEL	RPM	VOLTAGE	AMP	HORSEPOWER	SHIP WEIGHT (LBS.)
229235	PUM-35	1,725	115/230V, Prewired 115V	15	1/2	125

**HEAVY-DUTY BOLT CUTTERS**



- For cutting concrete reinforcing rods (rebar), medium tensile and soft bolts, rods, rivets, bars and chains
- Jaws are made of high-carbon alloy tool steel
- Maximum hardness of material to be cut: Rockwell C-40
- Steel handles are angled with rubber hand grips for maximum leverage
- Exceeds Federal Specification No. GGG-C-740d Type II



STOCK NUMBER	MODEL	HANDLE LENGTH (IN.)	CAP"Y (IN.)	JAW TYPE	CARTON PACK
<b>HEAVY-DUTY BOLT CUTTERS WITH REPLACEABLE HRC-40 BLACK JAWS AND HEADS</b>					
587712	BC-12B	12	3/16	Clipper Cut	4
587714	BC-14B	14	1/4	Clipper Cut	4
587718	BC-18B	18	5/16	Clipper Cut	4
587724	BC-24B	24	3/8	Center Cut	1
587730	BC-30B	30	1/2	Center Cut	1
587736	BC-36B	36	5/8	Center Cut	1
587742	BC-42B	42	3/4	Center Cut	1
<b>HEAVY-DUTY BOLT CUTTERS WITH REPLACEABLE HRC-48 RED JAWS AND HEADS</b>					
587812	BC-12R	12	3/16	Clipper Cut	2
587814	BC-14R	14	1/4	Clipper Cut	2
587818	BC-18R	18	5/16	Clipper Cut	1
587824	BC-24R	24	3/8	Center Cut	1
587830	BC-30R	30	1/2	Center Cut	1
587836	BC-36R	36	5/8	Center Cut	1
587842	BC-42R	42	3/4	Center Cut	1

**BOLT CUTTERS WITH INSULATED FIBERGLASS HANDLES**

- Lightweight, strong fiberglass handles are insulated for applications where electrical power may be present.
- Maximum hardness of material to be cut: Brinell370/ Rockwell C-40



STOCK NUMBER	MODEL	HANDLE LENGTH (IN.)	CAP"Y (IN.)	JAW TYPE
589118	BC-18F	18	5/16	Clipper Cut
589124	BC-24F	24	3/8	Clipper Cut

**REPLACEMENT JAWS AND HEADS FOR BOLT CUTTERS**

- Pair of jaws only
- Maximum hardness of material to be cut: Rockwell C-40 (Black) and Rockwell C-48 (Red)



JAWS ONLY BLACK OR RED



**REPLACEMENT JAWS (pair of jaws only)**

STOCK NO.	FOR HANDLE LENGTH (IN.)	JAW COLOR	MAXIMUM MATERIAL HARDNESS	CAP"Y (IN.)	JAW TYPE
588212	12"B	Black	HRC-40	3/16	Clipper Cut
588312	12"R	Red	HRC-48	3/16	Clipper Cut
588214	14"B	Black	HRC-40	1/4	Clipper Cut
588314	14"R	Red	HRC-48	1/4	Clipper Cut
588218	18"B	Black	HRC-40	5/16	Clipper Cut
588318	18"R	Red	HRC-48	5/16	Clipper Cut
588224	24"B	Black	HRC-40	3/8	Center Cut
588324	24"R	Red	HRC-48	3/8	Center Cut
588230	30"B	Black	HRC-40	1/2	Center Cut
588330	30"R	Red	HRC-48	1/2	Center Cut
588236	36"B	Black	HRC-40	5/8	Center Cut
588336	36"R	Red	HRC-48	5/8	Center Cut
588242	42"B	Black	HRC-40	3/4	Center Cut
588342	42"R	Red	HRC-48	3/4	Center Cut

REPLACEMENT HEAD BLACK OR RED



**REPLACEMENT HEADS (Includes pair of jaws, cross bar assembly and hinge bolts with nuts)**

STOCK NO.	FOR HANDLE LENGTH (IN.)	JAW COLOR	MAXIMUM MATERIAL HARDNESS	CAP"Y (IN.)	JAW TYPE
589412	12"B	Black	HRC-40	3/16	Clipper Cut
589612	12"R	Red	HRC-48	3/16	Clipper Cut
589414	14"B	Black	HRC-40	1/4	Clipper Cut
589614	14"R	Red	HRC-48	1/4	Clipper Cut
589418	18"B	Black	HRC-40	5/16	Clipper Cut
589618	18"R	Red	HRC-48	5/16	Clipper Cut
589424	24"B	Black	HRC-40	3/8	Center Cut
589624	24"R	Red	HRC-48	3/8	Center Cut
589430	30"B	Black	HRC-40	1/2	Center Cut
589630	30"R	Red	HRC-48	1/2	Center Cut
589436	36"B	Black	HRC-40	5/8	Center Cut
589636	36"R	Red	HRC-48	5/8	Center Cut
589442	42"B	Black	HRC-40	3/4	Center Cut
589642	42"R	Red	HRC-48	3/4	Center Cut



**REBAR CUTTER/BENDER**

- Can be bolted to floor or board for easy one-hand operation
- Patented design uses needle bearing for easy cutting
- Cuts and bends grade 60 rebar
- 5/8" Capacity; 52" length
- Jaws are made of high-carbon alloy tool steel, HRC-48

STOCK NUMBER	MODEL	HANDLE LENGTH (IN.)	CAP'Y (IN.)	JAW TYPE
220019	RCB-16NDLX	52	5/8	Shear Cut

**REPLACEMENT HEAD FOR REBAR CUTTER/BENDER HRC-48**

- Includes jaws, center and mounting bolt assemblies

STOCK NUMBER	MODEL	CAPACITY (IN.)
220017	RH-16	5/8

**SWAGING TOOL**

- Perfect for crimping cable ferrules and stops
- Crimping capacity from 1/16" – 3/16"
- Cuts wire rope up to 1/4"



STOCK NUMBER	MODEL	HANDLE LENGTH (IN.)	CAP'Y (IN.)	JAW TYPE
220324	JST-24	24	1/4	Shear Cut

**HEAVY-DUTY PIPE WRENCHES**

- Monoblock cast iron handle
- Jaws are 100% drop-forged
- Exceeds Federal Specification GGG-W-651e Type II Class



STOCK NUMBER	MODEL	LENGTH (IN.)	MAX PIPE DIA (IN.)	CARTON PACK
220608	PW-8	8	1	2
220610	PW-10	10	1-1/2	2
220612	PW-12	12	2	2
220614	PW-14	14	2	2
220618	PW-18	18	2-1/2	1
220624	PW-24	24	3	1
220636	PW-36	36	5	1
220648	PW-48	48	6	1

**ALUMINUM WRENCHES**

- Made of lightweight titanium aluminum alloy
- Drop forged and heat treated replaceable jaws
- Exceeds Federal Specification GGG-W-651e Type II Class



STOCK NUMBER	MODEL	LENGTH (IN.)	MAX PIPE DIA (IN.)	CARTON PACK
220510	ALM-10	10	1-1/2	2
220514	ALM-14	14	2	2
220518	ALM-18	18	4	1
220524	ALM-24	24	5	1
220536	ALM-36	36	11	1
220548	ALM-48	48	20	1

**21-PIECE SOCKET WRENCH SET - 3/4" DRIVE**

- Industrial quality, hardened and tempered, triple chrome plated
- Sixteen 12 point sockets
- Heavy-duty steel storage box

Set includes:  
3/4" Drive  
Ratchet Handle, Sliding T-bar, 8" and 16" Extension  
12 pt. Sockets (SAE): 3/4", 7/8", 15/16", 1", 1-1/16", 1-1/8", 1-3/16", 1-1/4", 1-5/16", 1-3/8", 1-7/16", 1-1/2", 1-5/8", 1-3/4", 1-7/8", 2"



STOCK NUMBER	DESCRIPTION	SHIP WEIGHT EACH (LBS.)	CARTON PACK
227930	21-Piece, 3/4" Drive Socket Set	34	1

**21-PIECE SOCKET WRENCH SET - 1" DRIVE**

- Industrial quality, hardened and tempered, triple chrome plated
- Sixteen 12 point sockets
- Heavy-duty steel storage box

Set includes:  
1" Drive Heavy-duty 26" Ratchet Handle, 22" Sliding T-bar, 8" and 18" Extension  
12 pt. Sockets (SAE): 1-5/8", 1-11/16", 1-3/4", 1-13/16", 1-15/16", 2", 2-1/8", 2-3/16", 2-1/4", 2-3/8", 2-1/2", 2-5/8", 2-3/4", 2-15/16", 3", 3-1/8"



STOCK NUMBER	DESCRIPTION	SHIP WEIGHT (LBS.)	CARTON PACK
227941	21-Piece, 1" Drive Socket Set	99	1



**ADJUSTABLE ANGLE WRENCHES**

- Made of heat-treated, chrome-vanadium steel, stronger than carbon steel
- Smooth operating screw
- Minimum jaw play
- Laser etched SAE and metric graduations
- Exceeds Federal Specification GGG-W-631 Type I

STOCK NUMBER	MODEL	LENGTH (IN.)	MAX PIPE DIA (IN.)
220706	CW-6	6	3/4
220708	CW-8	8	15/16
220710	CW-10	10	1-1/8
220712	CW-12	12	1-15/16
220715	CW-15	15	1-11/16
220718	CW-18	18	2

**7-PIECE SHORT COMBINATION WRENCH SETS**

- Special design on box end drives the side of the hex cut, not the corner
- Drop-forged alloy steel, heat-treated and hardened, raised landing, chrome plated and polished, vinyl pouches
- Exceeds Federal Specification No. GGG W-636

SAE set includes:  
3/8, 7/16, 1/2, 9/16, 5/8, 11/16 and 3/4"

Metric set includes:  
10, 12, 13, 14, 15, 17 and 19mm



STOCK NUMBER	DESCRIPTION	SHIP WEIGHT (LBS.)	CARTON PACK
477307	7-Piece Short Combination Wrench Set (SAE)	7	1
477308	7-Piece Short Combination Wrench Set (Metric)	5	1

**6-PIECE COMBINATION WRENCH SETS**

- Special design on box end drives the side of the hex cut, not the corner
- Drop-forged alloy steel, heat-treated and hardened, raised landing, chrome plated and polished, vinyl pouches
- Exceeds Federal Specification No. GGG W-636

SAE set includes:  
12pt. Combination Wrenches (SAE): 3/8, 7/16, 1/2, 9/16, 5/8 and 3/4"

Metric set includes:  
12pt. Combinaton Wrenches (Metric): 10, 12, 13, 14, 15 and 17mm

Jumbo set includes:  
12pt. Combination Wrenches (SAE): 1-3/8, 1-1/2, 1-5/8, 1-3/4, 1-7/8 and 2"



STOCK NUMBER	DESCRIPTION	SHIP WEIGHT (LBS.)	CARTON PACK
477406	6-Piece Combination Wrench Set (SAE)	2	1
477407	6-Piece Combination Wrench Set (Metric)	2	1
478406	6-Piece Jumbo Combination Wrench Set (SAE)	12	2

**11-PIECE COMBINATION WRENCH SETS**

- Special design on box end drives the side of the hex cut, not the corner
- Drop-forged alloy steel, heat-treated and hardened, raised landing, chrome plated and polished, vinyl pouches
- Exceeds Federal Specification No. GGG W-636

SAE set includes:  
3/8", 7/16", 1/2", 9/16", 5/8", 11/16", 3/4", 13/16", 7/8", 15/16" and 1"

Metric set includes:  
9, 10, 11, 12, 13, 14, 15, 16, 17, 19 and 21mm



STOCK NUMBER	DESCRIPTION	SHIP WEIGHT EACH (LBS.)	CARTON PACK
477411	11-Piece Combination Wrench Set (SAE)	7	1
477412	11-Piece Combination Wrench Set (Metric)	5	1

**14-PIECE COMBINATION WRENCH SETS**

- Special design on box end drives the side of the hex cut, not the corner
- Drop-forged alloy steel, heat-treated and hardened, raised landing, chrome plated and polished, vinyl pouches
- Exceeds Federal Specification No. GGG W-636

SAE set Includes:  
12 pt. Combination Wrenches (SAE): 3/8, 7/16, 1/2, 9/16, 5/8, 11/16, 3/4, 13/16, 7/8, 15/16, 1, 1-1/16, 1-1/8 and 1-1/4

Metric set Includes:  
12 pt. Combination Wrenches (Metric): 8, 9, 10, 11, 12, 13, 14, 15, 16, 17, 19, 21, 22 and 24mm



STOCK NUMBER	DESCRIPTION	SHIP WEIGHT (LBS.)	CARTON PACK
477414	14-Piece Combination Wrench Set (SAE)	10	6
477415	14-Piece Combination Wrench Set (Metric)	10	10

**OPEN STOCK COMBINATION WRENCHES**

STOCK NUMBER	SIZE (IN.)	SHIP WEIGHT (LBS.)	CARTON PACK
<b>SAE Standard Combination Wrenches</b>			
477421	1/4	1	6
477422	5/16	1	6
477423	3/8	1	6
477424	7/16	1	6
477425	1/2	1	6
477426	9/16	1	6
477427	5/8	1	6
477428	11/16	1	6
477429	3/4	1	6
477430	13/16	1	6
477431	7/8	1	4
477432	15/16	1	4
477433	1	1	4
477434	1-1/16	2	4
477435	1-1/8	2	4
477436	1-1/4	2	4
478411	1-5/16	2	2

STOCK NUMBER	SIZE (IN.)	SHIP WEIGHT (LBS.)	CARTON PACK
<b>SAE Standard Combination Wrenches (cont.)</b>			
478412	1-3/8	3	2
478413	1-7/16	3	2
478414	1-1/2	3	2
478415	1-5/8	4	2
478416	1-11/16	4	1
478417	1-3/4	4	1
478418	1-13/16	5	1
478419	1-7/8	6	1
478420	2	6	1
<b>SAE Short Combination Wrenches</b>			
477320	3/8	1	6
477321	7/16	1	6
477322	1/2	1	6
477323	9/16	1	6
477324	5/8	1	6
477325	11/16	1	6
477326	3/4	1	6



OPEN STOCK COMBINATION WRENCHES METRIC

STOCK NUMBER	SIZE	SHIP WEIGHT (LBS.)	CARTON PACK
<b>Metric Standard Combination Wrenches</b>			
477440	6mm	1	6
477441	7mm	1	6
477442	8mm	1	6
477443	9mm	1	6
477444	10mm	1	6
477445	11mm	1	6
477446	12mm	1	6
477447	13mm	1	6
477448	14mm	1	6
477449	15mm	1	6
477450	16mm	1	6
477451	17mm	1	6
477452	18mm	1	6
477453	19mm	1	6
477454	21mm	1	6
477455	22mm	1	4
477456	24mm	1	4
477457	26mm	1	4
477458	27mm	1	4
477459	30mm	1	4
477460	32mm	1	4
<b>Metric Short Combination Wrenches</b>			
477310	10mm	1	6
477311	11mm	1	6
477312	12mm	1	6
477313	13mm	1	6
477314	14mm	1	6
477315	15mm	1	6
477316	16mm	1	6
477317	17mm	1	6
477318	18mm	1	6
477319	19mm	1	6

40-PIECE TAP AND DIE SET

- Tungsten steel
- National Coarse, National Fine and Pipe Combination threads

Set includes:

Long Handle Adjustable Tap Wrench, T-Handle Tap Wrench, Die-Handle, Screwdriver, Screw Pitch Gauge and Storage case

1 Tap and 1 Die in each of the following sizes: 4-36, 6-32, 8-32, 10-32, 10-24, 12-24, 1/4"-20, 1/4"-28, 5/16"-18, 5/16"-24, 3/8"-16, 3/8"-24, 7/16"-20, 7/16"-14, 1/2"-20, 1/2"-13, and 1/8" Pipe Tap



STOCK NUMBER	MODEL	SHIP WEIGHT (LBS.)	CARTON PACK
220086	TD-40TS	4	1

110-PIECE TAP AND DIE SET

- Tungsten steel
- SAE, NC, NF, NS threads
- Metric, International, Special
- American National Pipe, NPT, NPS

Set includes:

1" and 1-1/2" Die Stock, #4 and #6 Adjustable Tap Handle, T-Type Tap Wrench and Storage Case

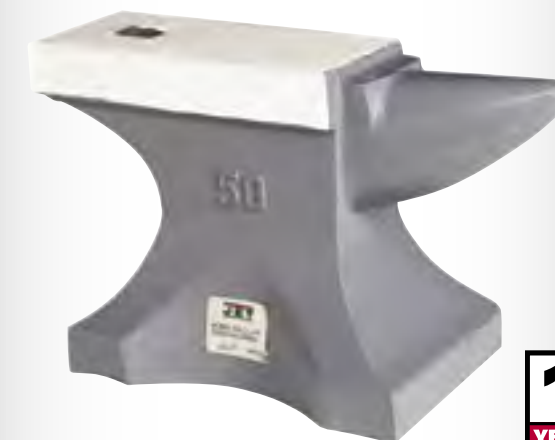
1 Taper Tap, 1 Bottoming Tap and Die in each of the following sizes: 4-40, 6-32, 8-32, 10-24, 12-24, 10-32, 1/4"-20, 1/4"-28, 1/4"-24, 1/4"-40, 5/16"-18, 5/16"-24, 3/8"-16, 3/8"-24, 7/16"-14, 7/16"-20, 1/2"-13, 1/2"-20, 9/16"-12, 9/16"-18, 5/8"-11, 5/8"-18, 3/4"-10, 3/4"-16, 1/8"NPT27, 1/4"NPT18, 6 X 1.0, 8 x 1.25, 10 x 1.5, 10 x 1.0, 11 x 1.5, 12 x 1.25, 12 x 1.75, 14 x 1.25, 18 x 1.5



STOCK NUMBER	MODEL	SHIP WEIGHT (LBS.)	CARTON PACK
220087	TD-100TS	27	1

CAST ALLOY ANVILS

- Made from durable, non-hardened cast alloy that resists cracking or breaking



STOCK NUMBER	MODEL	SHIP WEIGHT (LBS.)	CARTON PACK
487685	CA-85	95	1
487611	CA-110	120	1
487615	CA-150	175	1

GENERAL PURPOSE STEEL VISES

- Rugged fabricated steel construction
- Replacement serrated jaw inserts
- Built-in horizontal pipe jaws
- 360° swivel base with double swivel lock-downs
- Large flat anvil surface with curved horn
- Economically priced for general purpose use



STOCK NUMBER	MODEL	JAW WIDTH (IN.)	JAW OPENING (IN.)	THROAT DEPTH (IN.)	PIPE JAW	LEAD SCREW (DIA/IN)	SHIP WEIGHT (LBS.)
373804	OSV-4	4	4	2-1/2	1/2 - 1	3/4	22
373805	OSV-5	5	5	2-5/8	7/8 - 1-3/8	7/8	31
373806	OSV-6	6	6	3	1 - 1-1/2	7/8	36
373808	OSV-8	8	8	3-1/2	1-1/4 - 3-3/4	7/8	49
373810	OSV-10	10	10	4	5/8 - 3	7/8	58



- Vises ..... 229
- Vise Accessories ..... 242
- POW-R-ARM Positioners ..... 244
- Clamps ..... 246
- Wrench / Socket Sets ..... 260
- Hand Tools ..... 266
- Polishers / Grinders ..... 287



**SUPER PRECISION 3-AXIS TILTING MACHINE VISES**

- Perfect vise for 3-axis jobs in milling, drilling, grinding, shaping and jig boring
- Vise bodies are constructed of close grained, high tensile, seasoned alloy castings
- Ergonomically designed all steel handle with spring loaded ball attachment
- Durable polychromatic finish
- Jaw plates hardened and ground
- Hardness of jaws 55 ±3 HRC
- No jaw tilt
- Accurately indexed for 3 way angular work
- All ground surfaces are made to close accuracies
- 360° Swivel base
- 45° Tilting range on either side
- 90° Vertical indexing
- Bases have keyways and bolt slots for machine mounting



STOCK NUMBER	MODEL	JAW WIDTH (IN.)	JAW DEPTH (IN.)	JAW OPENING (IN.)	SHIP WEIGHT (LBS.)
11700	TLT/SP-50	2	1	2	9
11701	TLT/SP-75	3	1-5/16	3	24
11702	TLT/SP-100	4	1-1/2	4	46
11803	TLT/SP-125	5	1-3/4	5	81
11804	TLT/SP-150	6	1-3/4	6	121

**SUPER PRECISION 2-AXIS ANGULAR MACHINE VISES**

- Perfect vise for applications where the workpiece requires machining on an angle
- Vise bodies are constructed of close grained, high tensile, seasoned alloy castings
- All ground surfaces made to close tolerances
- Ergonomically designed all steel handle with spring loaded ball attachment
- Jaw plates hardened and ground
- No jaw tilt
- Hardness of jaws 55 ±3 HRC
- 90° Vertical and 180° Horizontal indexing
- 360° Swivel base
- 90° Tilting range
- Perfectly indexed for angular work
- Relief in the clamp seat ensures complete surface contact providing firm locking at any angle
- Bases have keyways and bolt slots for machine mounting



STOCK NUMBER	MODEL	JAW WIDTH (IN.)	JAW OPENING (IN.)	JAW DEPTH (IN.)	SHIP WEIGHT (LBS.)
11703	AMV/SP-50	2	2	15/16	8
11704	AMV/SP-75	3	3	1-5/16	21
11705	AMV/SP-100	4	4	1-9/16	38
11706	AMV/SP-125	5	5	2	71
11707	AMV/SP-150	6	6	2	85





**SUPER PRECISION MILLING MACHINE VISES**

- Perfect vise for jig boring, grinding and shaping jobs
- Fully graduated 360° swivel base
- Vise bodies are constructed of close grained, high tensile, seasoned alloy castings
- Vise body has a premium polychromatic finish which is scratch and rust proof
- All ground surfaces made to close tolerances
- Jaw are hardened and ground which allows the workpiece to be held dead center
- Hardness of jaws 55±3 HRC
- Enhances efficiency and improves the life of jaws. Reduces strain on vise body.
- No jaw tilt or lift
- 180° Horizontal indexing
- Ergonomically designed all steel handle with spring loaded ball attachment



STOCK NUMBER	MODEL NUMBER	JAW WIDTH (IN.)	JAW OPENING (IN.)	JAW DEPTH (IN.)	WEIGHT (LBS.)
11708	MMV/SP-50	2	2	1-5/16	8
11709	MMV/SP-100	4	4	1-9/16	39
11710	MMV/SP-150	6	6	1-3/4	88

**SUPER PRECISION UNIVERSAL ANGLE VISES**



- Specially designed for holding work on surface grinders and precision micro boring machines
- Allows the workpiece to be set any desired compound angle
- Has one fixed horizontal axis which allows the workpiece to be rotated along the vertical axis
- Vise bodies are constructed of close grained, high tensile, seasoned alloy castings
- Hardness of jaws 55 ±3 HRC
- 360° Swivel base allows complete rotation along the vertical axis
- Three separate swivel movements are provided fully graduated
- Square thread screw is totally enclosed in the moveable jaw
- Ergonomically designed all steel handle with spring loaded ball attachment
- A milled slot in the base allows for accurate location of the vise on the machine table



STOCK NUMBER	MODEL NUMBER	JAW WIDTH (IN.)	JAW OPENING (IN.)	JAW DEPTH (IN.)	WEIGHT (LBS.)
11711	UV/SP-50	2	1-3/5	7/8	8
11712	UV/SP-100	4	3-1/5	1	27

**SUPER PRECISION SELF CENTERING VISE**

- Very convenient for use with drilling and milling machines where quick centering is required
- Allows for accurate centering of jobs automatically
- Special design allows accurate setting up of jobs with only a single machine setting
- Vise bodies are constructed of close grained, high tensile, seasoned alloy castings
- Jaws ground and hardened to 55 ±3 HRC
- Swivel base provided with positive locking and adjustable through 360°
- Opposite threads for quick and accurate centering
- Automatically adjusts work piece to its center



STOCK NUMBER	MODEL	JAW WIDTH (IN.)	JAW OPENING (IN.)	JAW DEPTH (IN.)	WEIGHT (LBS.)
11713	SCV/SP-100	4	4	1-1/2	32

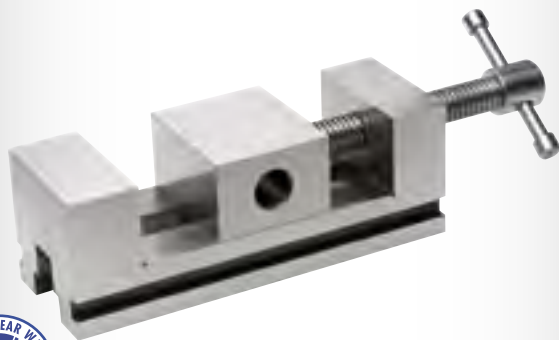
**SUPER PRECISION SINE VISES**

- High precision, solid one-piece vise mounted onto precision hinged bottom plate
- Hardness of jaws 50 to 55 HRC
- Jaw can be opened or closed without unbolting from work surface
- Minute angle step of 0.2" built into the vise allows very small angles to be set with ease using standard gauge blocks
- Sine Range: 0 – 60°



STOCK NUMBER	MODEL	JAW WIDTH (IN.)	JAW OPENING (IN.)	JAW DEPTH (IN.)	CENTER DISTANCE (IN.)	SQUARENESS (IN.)	WEIGHT (LBS.)
11717	SNV/6	3	3-3/4	1-3/8	6	0.0003	17
11720	SNV/7	2-3/4	2-61/64	1-9/16	7	0.0003	18



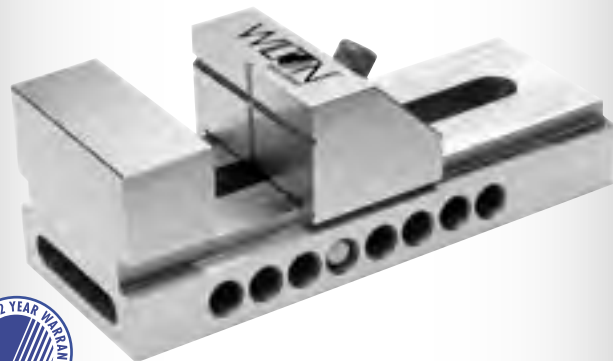


**SUPER PRECISION TOOL MAKERS STEEL VISE**

- Made from specially selected alloy steel
- Heat treated for hardness
- Hardness 50 to 55 HRC
- Every part is precision ground square and parallel within 0.0002"
- Completely stress relieved
- Minute angle step of 0.2" allows very small angles to be set with ease of using standard gauge blocks
- Body dimensions are 7-3/32" x 2-3/4" x 33-11/32"

STOCK NUMBER	MODEL	JAW WIDTH (IN.)	JAW OPENING (IN.)	JAW DEPTH (IN.)	CENTER TO CENTER (IN.)	WEIGHT (LBS.)
11716	TMV/ST/4	2-3/4	3	1-9/16	6	11

**SUPER PRECISION TOOL MAKERS SCREWLESS VISES**



- All steel body
- Squareness and parallelism to within 0.0004"
- Rapid positioning notches
- Positive downward clamping force
- V-groove in sliding jaws hold work pieces securely and accurately
- Hardness of 50 to 55 HRC

STOCK NUMBER	MODEL	JAW WIDTH (IN.)	JAW OPENING (IN.)	JAW DEPTH (IN.)	LENGTH (IN.)	HEIGHT (IN.)	WEIGHT (LBS.)
11714	TMV/2	2	3-1/8	1	5-1/2	2	8
11715	TMV/23	3	3-3/4	1-3/8	7	2-1/2	11

**SUPER PRECISION DRILL PRESS VISES**



- Rugged design makes these vises perfect for even the most difficult of drilling, tapping and reaming operations
- Body made from close grain aged cast iron
- Ground vise bed for smooth and consistent jaw movement
- Jaws are hardened and ground, with cross patterned 90° V-grooves in the stationary jaw facilitating holding of round pieces both horizontally & vertically
- Hardness of jaws 55 ±3HRC

STOCK NUMBER	MODEL	JAW WIDTH (IN.)	JAW OPENING (IN.)	JAW DEPTH (IN.)	WEIGHT (LBS.)
11718	DPV/80	3-3/16	3-1/2	1	13
11719	DPV/100	4	4	1-1/4	20

**VERSATILE DRILL PRESS VISES**

- Made from high grade cast iron
- Ground vise bed for smooth, consistent jaw movement
- Hardened top V-groove jaws
- Rugged design and large workload capacity



STOCK NUMBER	MODEL	JAW WIDTH (IN.)	JAW OPENING (IN.)	JAW DEPTH (IN.)	WEIGHT (LBS.)
<b>CONTINUOUS NUT</b>					
63238	1335	3	2-3/4	1-7/8	6
63239	1345	4	4	2-1/8	12
63240	1360	5	5	2-1/8	24
<b>RAPID ACTING NUT</b>					
63241	1435	3-1/2	4-1/4	1-3/4	11
63242	1445	4-1/2	4-3/4	1-7/8	15
63243	1460	6	6-3/4	2-1/8	28

**STANDARD & ANGLE DRILL PRESS VISES**

- Precision grinding of sides and front side face permits additional mounting positions for drilling, tapping or reaming
- Combining a smooth moveable jaw plate with a cross-patterned 90° V groove stationary jaw. The vise is recommended for general use.



STOCK NUMBER	MODEL	JAW WIDTH (IN.)	JAW OPENING (IN.)	JAW DEPTH (IN.)	WEIGHT (LBS.)
<b>STANDARD MODELS</b>					
12800	25	2-1/2	2-9/16	1-1/2	6
12860	30	3	3-1/8	1-3/4	10
<b>ANGLE MODELS</b>					
12850	25A	2-1/2	2-1/2	1-1/2	12
12870	30A	3-1/8	3-1/8	1-3/4	17

**CAM ACTION DRILL PRESS VISES**

- Simple push or pull on the center bar knob sets the jaw in position
- Easy press locking lever cams the jaw ahead 3/32", exerting a holding pressure that is adjustable from 400 to 1100 lbs
- Base is designed for clear through drilling applications
- Unique top locking lever can be raised or lowered to tighten or loosen against the workpiece



STOCK NUMBER	MODEL	JAW WIDTH (IN.)	JAW OPENING (IN.)	JAW DEPTH (IN.)	WEIGHT (LBS.)
13400	1203	3	3	1-1/4	10
13401	1204	4	4-11/16	1-5/16	18
13402	1206	6	6-3/16	1-13/16	34
13403	1208	8	8-3/16	2	51



63186



**VERTI-LOCK® MACHINE VISES**

- The ductile alloy vise body with flame-hardened bed provides solid work support, accuracy, and longevity
- The fixed jaw is rated at 85,000 PSI and the annealed, surface ground sliding jaw at 70,000 PSI
- Totally enclosed vise screw is cut from special alloy steel, hardened and ground
- The vise and optional swivel base have coolant troughs to channel fluid out of your way

STOCK NUMBER	MODEL	JAW WIDTH (IN.)	JAW OPENING (IN.)	WEIGHT (LBS.)
<b>STANDARD MODELS</b>				
12390	1250N	5	4-1/2	50
63186	1275N	6	7-1/2	75
12375	1280N	8	7-1/2	145
<b>SWIVEL BASES</b>				
12285	5S	5	-	20
12290	6S	6	-	30
12295	8S	8	-	80

\*6S base will fit onto 1275 vise

**MILLING MACHINE VISES**



- Complete with swivel base, the 50S and 60S are ideal for milling, tapping and drilling operations. Two bolt lugs make mounting easy and vise can also be mounted on its stationary base
- Swivel base is finely graduated for accurate set up of workpieces requiring accurate clamping
- High -carbon steel jaws
- High quality steel main screw utilizes a fine Acme thread for strength

STOCK NUMBER	MODEL	JAW WIDTH (IN.)	JAW OPENING (IN.)	JAW DEPTH (IN.)	OVERALL HEIGHT (IN.)	WEIGHT(LBS.)
12365	50S	5	3-1/4	1-5/8	5-1/8	40
12370	60S	6	4-3/8	1-7/8	5-9/16	63

**COMBINATION PIPE AND BENCH VISES**

- Self-centering pipe jaws-hardened steel jaws hold up to 6" pipe safely, securely
- Hardened steel jaw inserts-machine serrated, replaceable jaws assure a positive hold
- 60,000 PSI tensile ductile iron body parts for mass and strength
- Large Anvil
- Enclosed construction keeps lubrication in, contaminants out
- Locking swivel base-with double lockdowns for non-slip hold in any position
- Alloy steel slide bar-added strength and keyed for a precision fit
- Precision thrust bearing creates greater clamping pressure and increased longevity



STOCK NUMBER	MODEL	JAW WIDTH (IN.)	JAW OPENING (IN.)	THROAT DEPTH (IN.)	PIPE JAW CAPACITY (IN.)	SHIP WEIGHT (LBS.)	CARTON PACK	REPLACEMENT SERRATED JAW INSERTS	REPLACEMENT PIPE JAWS
10200	C-0	3-1/2	5	4-1/2	1/8 - 2-1/2	52	1	2904960	2908050
10225	C-1	4-1/2	6	4-3/4	1/8 - 3-1/2	78	1	2905000	2900770
10250	C-2	5	7	5-5/16	1/8 - 4-1/2	113	1	2903240	2900830
10275	C-3	6	9	6-5/8	1/4 - 6	205	1	2907370	2907600

**ALL-WEATHER VISE**

- Self-centering pipe jaws-hardened steel jaws hold up to 6" pipe safely, securely
- Hardened steel jaw inserts-machine serrated, replaceable jaws assure a positive hold
- 60,000 PSI tensile ductile iron body parts for mass and strength
- Large Anvil
- Enclosed construction keeps lubrication in, contaminants out. Perfect for outdoor use
- Locking swivel base-with double lockdowns for non-slip hold in any position
- Alloy steel slide bar-added strength and keyed for a precision fit



STOCK NUMBER	MODEL	JAW WIDTH (IN.)	JAW OPENING (IN.)	THROAT DEPTH (IN.)	PIPE JAW CAPACITY (IN.)	SHIP WEIGHT (LBS.)	CARTON PACK	REPLACEMENT SERRATED JAW INSERTS	REPLACEMENT PIPE JAWS
10400	AW35	3-1/2	5	4-1/2	1/8 - 2-1/2	52	1	2905040	—
10500	AW45	4-1/2	6	4-3/4	1/8 - 3-1/2	78	1	2907430	2907420



MACHINIST SWIVEL & STATIONARY BASE VISES



10021



- 60,000 PSI tensile ductile iron body parts for mass and strength
- Large Anvil
- Precision thrust bearing creates greater clamping pressure and increased longevity
- Extra deep throat-this design gives you more working room where it counts
- Locking swivel base-360° rotation is enhanced by serrated swivel base with double lockdowns for non-slip holding and four mounting posts
- Enclosed design keeps contaminants out, lifetime lubrication for smooth operation.
- Hardened steel jaw, replaceable inserts are machine serrated for safe, sure grip under maximum torque.

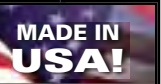
SWIVEL BASE

STOCK NUMBER	MODEL	JAW WIDTH (IN.)	JAW OPENING (IN.)	THROAT DEPTH (IN.)	SHIP WEIGHT (LBS.)	CARTON PACK	REPLACEMENT SERRATED JAW INSERTS	REPLACEMENT SMOOTH JAW INSERTS
10006	300S	3	4-3/4	2-5/8	28	1	2903080	2903090
10011	350S	3-1/2	5-1/4	2-3/4	41	1	2904960	-
10016	400S	4	6-1/2	3-1/2	62	1	2904980	2904990
10021	450S	4-1/2	7-1/2	4	72	1	2905000	-
10026	500S	5	8	4-1/4	95	1	2905020	2905030
10031	600S	6	10	5-1/2	150	1	2903280	-
10036	800S	8	12	5-13/16	238	1	2904940	-

STATIONARY BASE

STOCK NUMBER	MODEL	JAW WIDTH (IN.)	JAW OPENING (IN.)	THROAT DEPTH (IN.)	SHIP WEIGHT (LBS.)	CARTON PACK	REPLACEMENT SERRATED JAW INSERTS	REPLACEMENT SMOOTH JAW INSERTS
10056	300N	3	4-3/4	2-5/8	23	1	2903080	2903090
10066	350N	3-1/2	5-1/4	2-3/4	35	1	2904960	-
10076	400N	4	6-1/2	3-1/2	53	1	2904980	2904990
10086	450N	4-1/2	7-1/2	4	63	1	2905000	-
10096	500N	5	8	4-1/4	87	1	2905020	2905030
10107	600N	6	10	5-1/2	138	1	2903280	-
10116	800N	8	12	5-13/16	225	1	2904940	-

TRADESMAN VISES



- Wider jaws provide greater clamping surface
- Fully enclosed spindle and nut increases the life of the vise
- Made from 60,000 PSI tensile ductile iron
- Large anvil work surface
- Precision turned sidebar
- 360° swivel base with double lockdowns

STOCK NUMBER	MODEL	JAW WIDTH (IN.)	JAW OPENING (IN.)	THROAT DEPTH (IN.)	PIPE JAW CAPACITY (IN.)	SHIP WEIGHT (LBS.)	CARTON PACK	REPLACEMENT SERRATED JAW INSERTS	REPLACEMENT PIPE JAWS
63199	1745	4-1/2	4	3-1/4	1/4 - 2-1/2	42	1	2908060	2904200
63200	1755	5-1/2	5	3-3/4	1/4 - 3	53	1	2908070	2904200
63201	1765	6-1/2	6-1/2	4	1/4 - 3-1/2	73	1	2908080	2904200
63202	1780A	8	7	4-3/4	1/8 - 3-1/2	109	1	2908100	2908050

PEDESTAL BASE

- Base: 18" x 18" x 1/4", Top: 10-1/2" x 8-1/2" x 1/4"
- Perfect for 1755 and 1765 Tradesman Swivel base models
- 33-1/2" tall base
- Made from fabricated steel



Vise not included



STOCK NUMBER	MODEL	DESCRIPTION	WEIGHT (LBS.)	CARTON PACK
63185	159V	Pedestal Base Fits Models 1755 and 1765	55	1

HIGH VISIBILITY SAFETY VISES

- Safety color conforms to OSHA standard for physical hazards; Regulation #1910.144
- Replaceable serrated top jaws and pipe jaws
- Fully enclosed spindle and nut
- 360° swivel base and double lockdowns
- Made from 30,000 PSI tensile ductile iron
- Large anvil work surface
- Powder coat paint resists scratches and provides a tough durable finish



STOCK NUMBER	MODEL	JAW WIDTH (IN.)	JAW OPENING (IN.)	THROAT DEPTH (IN.)	PIPE JAW CAPACITY (IN.)	SHIP WEIGHT (LBS.)	CARTON PACK	REPLACEMENT SERRATED JAW INSERTS	REPLACEMENT PIPE JAWS
63187	1550	5	5-1/4	3-3/4	1/4 - 2-1/2	52	1	21400-03	21400-04
63188	1560	6	5-3/4	4-1/8	1/4 - 3-1/2	64	1	21500-03	21500-04

MECHANICS VISES

- Heavy duty 30,000 PSI castings for long life and added strength
- Large anvil work surface
- Swivel base rotates 360° and has double lockdowns ensuring maximum stability
- Powder coat paint resists scratches and provides a tough durable finish
- Replaceable hardened steel top and pipe jaws
- Best for professional mechanics



STOCK NUMBER	MODEL	JAW WIDTH (IN.)	JAW OPENING (IN.)	THROAT DEPTH (IN.)	PIPE JAW CAPACITY (IN.)	SHIP WEIGHT (LBS.)	CARTON PACK	REPLACEMENT SERRATED JAW INSERTS	REPLACEMENT PIPE JAWS
21300	744	4	4-1/2	3-7/16	1/4 - 2	37	1	21300-03	21300-04
21400	745	5	5-1/4	3-3/4	1/4 - 2-1/2	50	1	21400-03	21400-04
21500	746	6	5-3/4	4-1/8	1/4 - 3-1/2	64	1	21500-03	21500-04
21800	748A	8	8-1/4	4-3/4	1/4 - 3-1/2	89	1	21800-03	21500-04



10203



COLUMBIAN MACHINIST VISES

- Strong, ductile iron main castings are guaranteed against defects in workmanship and materials
- Steel jaw faces made from hardened tool steel- have deep knurled pattern to ensure positive gripping
- All sizes (except 6") feature a generous ground/ polished anvil
- Stationary models have a flat base, making it unnecessary to modify bench top for mounting
- Swivel base models rotate 360° and gear lock bolt ensures positive locking against slippage

STOCK NUMBER	MODEL	JAW WIDTH (IN.)	JAW OPENING (IN.)	THROAT DEPTH (IN.)	SHIP WEIGHT (LBS.)	CARTON PACK	REPLACEMENT SERRATED JAW INSERTS
<b>Swivel Base</b>							
10201	603M3	3	4	3	26	1	10101S40
10202	603-1/2-M3	3-1/2	5	3-1/4	37	1	10102S40
10203	604M3	4	6	3-5/8	46	1	10103S40
10204	604-1/2-M3	4-1/2	7	4-1/8	59	1	10104S40
10205	605M3	5	8	4-1/4	79	1	10105S40
10206	606M3	6	10	4-3/8	111	1	10106S40
<b>Stationary Base</b>							
10101	503M3	3	4	3	21	1	10101S40
10102	503-1/2-M3	3-1/2	5	3-1/4	30	1	10102S40
10103	504M3	4	6	3-5/8	39	1	10103S40
10104	504-1/2-M3	4-1/2	7	4-1/8	51	1	10104S40
10105	505M3	5	8	4-1/4	68	1	10105S40
10106	506M3	6	10	4-3/8	96	1	10106S40

COLUMBIAN WORKSHOP VISES



- Serrated jaw faces are replaceable
- Permanent pipe jaws
- Positive locking swivel base rotates 180°
- Large anvil work surface
- Screw is cold rolled and Acme threaded

STOCK NUMBER	MODEL	JAW WIDTH (IN.)	JAW OPENING (IN.)	THROAT DEPTH (IN.)	PIPE JAW CAPACITY (IN.)	SHIP WEIGHT (LBS.)	CARTON PACK	REPLACEMENT SERRATED JAW INSERTS
11120	D4	4	4-3/4	2-5/8	1/8 - 2	20	1	11104S41
11121	D5	5	5-3/4	3-7/16	1/8 - 2	28	1	11124S41
11122	D6	6	6-3/4	3-11/16	1/8 - 2-1/2	41	1	11125S41
11200	S6	6	6	4-3/16	3/8 - 2-3/4	60	1	11106S41

COLUMBIAN COMBINATION PIPE AND BENCH VISES

- Strong, ductile iron main castings are guaranteed for life against defects in workmanship and materials
- Hardened steel jaw faces have deep knurled pattern which ensures strength and longevity
- Pipe jaws are interchangeable and reversible-they do not protrude beyond the jaw faces, so other work can be held without removing pipe jaws-Holds pipes as small as 1/8"
- Swivel base rotates 360° and gear lock bolt ensures positive locking against slippage



STOCK NUMBER	MODEL	JAW WIDTH (IN.)	JAW OPENING (IN.)	THROAT DEPTH (IN.)	PIPE JAW CAPACITY (IN.)	SHIP WEIGHT (LBS.)	CARTON PACK	REPLACEMENT SERRATED JAW INSERTS	REPLACEMENT PIPE JAWS
10403	2031/2M3	3-1/2	4	4	1/8 - 2-1/2	38	1	10102S40	10403S46
10404	2041/2M3	4-1/2	5	5-3/8	1/8 - 3-1/2	64	1	10104S40	10404S46
10405	205M3	5-1/2	6	6-1/4	1/8 - 4-1/2	98	1	10405S40	10405S46
10406	206M3	6	10	7-1/8	1/8 - 6	170	1	10106S40	10405S46

MULTI-PURPOSE MECHANICS VISE

- Jaw opening expands to incredible 9-3/4" when reversed
- When jaws are in normal position, jaw width measures 5-1/2" wide with a 6" opening
- Replaceable, hardened tool steel jaw faces
- Swivel base with four mounting lugs allows for 360° swivel
- Two working anvil surfaces
- Two lockdown bolts are furnished



STOCK NUMBER	MODEL	JAW WIDTH (IN.)	JAW OPENING (IN.)	THROAT DEPTH (IN.)	PIPE JAW CAPACITY (IN.)	SHIP WEIGHT (LBS.)	CARTON PACK	REPLACEMENT SERRATED JAW INSERTS
14500	4500	5-1/2	6 (regular) 9-3/4 (reversed)	3-3/4 (regular) 2-3/4 (reversed)	1/8-3	50	1	11206S41





UTILITY WORKSHOP VISES

- Heavy-duty 30,000 PSI casting for strength and durability
- Large anvil work surface
- 180° swivel base with lockdown allows for quick and easy positioning
- Powder coat paint resists scratches and provides a tough durable surface
- Built-in pipe jaws handle various pipe sizes
- Perfect for general clamping applications

STOCK NUMBER	MODEL	JAW WIDTH (IN.)	JAW OPENING (IN.)	THROAT DEPTH (IN.)	PIPE JAW CAPACITY (IN.)	SHIP WEIGHT (LBS.)	CARTON PACK	REPLACEMENT SERRATED JAW INSERTS
11126	674	4-1/2	4	2-5/8	1/8 – 2	19	1	76654S41
11127	675	5-1/2	5	3-5/16	1/8 – 2-1/2	29	1	11127S41
11128	676	6-1/2	5-1/2	3-13/16	1/8 – 2-1/2	43	1	11128S41
00191	656HD	6	6	4-3/16	1/8 – 3	63	1	11106S41
11800	648HD	8	7-1/2	4-1/2	1/8 – 3	80	1	2904130

SHOP VISES



- Heavy duty 30,000 PSI casting for strength and durability
- Replaceable top jaws and built-in pipe jaws
- 360° swivel base with double lockdown for quick and easy positioning
- Designed for general duty applications
- Built-in pipe jaws handle various pipe sizes
- Rubber pinch point safety guards
- Large anvil work surface

STOCK NUMBER	MODEL	JAW WIDTH (IN.)	JAW OPENING (IN.)	THROAT DEPTH (IN.)	SHIP WEIGHT (LBS.)	CARTON PACK	REPLACEMENT SERRATED JAW INSERTS
63300	WS4	4	4	2-3/4	22	1	310041W
63301	WS5	5	5	3	31	1	310051W
63302	WS6	6	6	3-1/2	42	1	310061W
63304	WS8	8	8	4	67	1	310081W

VACUUM BASE VISES



- Light weight and portable
- Mounts on any clean, flat surface
- Cast aluminum body
- 360° swivel base and 180° head tilt
- Free removeable rubber jaw faces
- Steel V-grooved jaws
- Seal vacuum base to any flat, clean and dry surface by pressing base to surface and pulling lock arm 180° into position

STOCK NUMBER	MODEL	JAW WIDTH (IN.)	JAW OPENING (IN.)	TYPE OF BASE	WEIGHT (LBS.)	CARTON PACK
63500	3VB	2-3/4	2-1/2	Vacuum	13	4

SUPER-JUNIOR VISES

- Super-Junior® Vises come in two styles-clamp-on and swivel base
- Both clamp-on models are portable
- Top jaws are grooved and replaceable
- Spindle is fully enclosed
- Double lockdowns ensure stability
- Both swivel and clamp-on base models can rotate 45 left or right on base
- Clamp-on opening for both CBV-65 and CBV-100 is 3"



STOCK NUMBER	MODEL	JAW WIDTH (IN.)	JAW OPENING (IN.)	THROAT DEPTH (IN.)	SHIP WEIGHT (LBS.)	CARTON PACK	REPLACEMENT SERRATED JAW INSERTS
<b>Clamp-On Base</b>							
63198	CBV-65	2-1/2	2-1/8	2	9	1	2900270
63247	CBV-100	4	2-1/4	2	15	1	2900300
<b>Swivel Base</b>							
63244	SBV-65	2-1/2	2-1/8	2	8	1	2900270
63248	SBV-100	4	2-1/4	2	14	1	2900300

CLAMP-ON BENCH VISES

- Portable and compact bench vise for light work in the home, garage and shop
- Cast iron body with cast in pipe jaws
- Double steel guide bars
- Built-in anvil



STOCK NUMBER	MODEL	JAW WIDTH (IN.)	STANDARD PACK	MAXIMUM OPENING (IN.)	SHIP WEIGHT (LBS.)	CARTON PACK
33150	150	3	6	2-1/2	4	6
33153	153	3	6	2-1/2	6	6

LIGHT-DUTY WOODWORKING VISES

- Versatile vise for home craftsman, woodworking shop and school shop
- High tensile iron jaws with cold rolled steel guide bars
- Jaws are drilled for attaching wood faces
- Zinc-plated steel main screw and crosspin handle



STOCK NUMBER	MODEL	JAW WIDTH (IN.)	STANDARD PACK	MAXIMUM OPENING (IN.)	SHIP WEIGHT (LBS.)	CARTON PACK
33176	176	6-1/2	2	4-1/2	5	2
33178	178	7	1	8	11	1



HEAVY-DUTY WOODWORKING VISES

- Front jaw pivots 10° to allow for clamping irregular shaped parts
- Front jaw moves up 9/16" to act as a full length dog
- Pivot jaw can be removed for wider clamping requirements

STOCK NUMBER	MODEL	JAW WIDTH (IN.)	TYPE OF NUT	MAXIMUM OPENING (IN.)	SHIP WEIGHT (LBS.)	CARTON PACK
63144	78A	4 x 7	Rapid Acting	10	30	1
63245	78C	4 x 7	Continuous Nut	10	30	1
63218	79A	4 x 10	Rapid Acting	13	36	1
63246	79C	4 x 10	Continuous Nut	13	36	1

MAGNETIC MAPLE JAW INSERTS



- Prevent marring with magnetic jaw inserts that slide on and off
- Strong magnet holds jaw parts in place

STOCK NUMBER	MODEL	JAW WIDTH (IN.)	DESCRIPTION	SHIP WEIGHT (LBS.)	CARTON PACK
63142	78B	4 x 7	Wood Jaw Face	1-1/2	1
63143	79B	4 x 10	Wood Jaw Face	2	1

COPPER JAW CAPS



- Designed to avoid marring the surface of materials
- 100% copper jaw caps have polished faces and pliable copper extensions for a sure-grip fit

STOCK NUMBER	MODEL	JAW WIDTH (IN.)	SHIP WEIGHT (LBS.)	CARTON PACK
24403	404-3	3	1	Pair
24404	404-3-1/2	3-1/2	1	Pair
24405	404-4	4	1	Pair
24406	404-4-1/2	4-1/2	1	Pair
24407	404-5	5	2	Pair
63203	404-5-1/2	5-1/2	2	Pair
24408	404-6	6	3	Pair
63204	404-6-1/2	6-1/2	3	Pair
24409	404-8	8	5	Pair

MULTI-GRIP VISE JAWS

- Soft polyurethane jaws designed to avoid marring the surface of softer metals and to protect jaw face
- Designed to fit any 3" – 6" vise jaws, including all WILTON and COLUMBIAN vises
- Magnetic back mounts securely to jaw
- Great for holding wood, metal and tubing
- One size fits all



STOCK NUMBER	WIDTH (IN.)	SHIP WEIGHT (LBS.)	CARTON PACK
21111	5-1/2	7	10

MODEL A-ALUMINUM MAGNEFIX JAW CAPS

- Aluminum alloy design includes six grooves to compensate for the unevenness of the workpiece
- Deeper V-groove ensures more secure clamping of circular workpieces
- Use together with rubber magnefix jaw caps when clamping taper pins and spherical parts



STOCK NUMBER	MODEL	JAW WIDTH (IN.)	SHIP WEIGHT (LBS.)	CARTON PACK
14826	A-3	3	1	Pair
14827	A-3.5	3-1/2	1	Pair
14828	A-4	4	1	Pair
14829	A-4.5	4-1/2	1	Pair
14830	A-5	5	1	Pair
14871	A-5.5	5-1/2	1	Pair
14831	A-6	6	1	Pair
14874	A-6.5	6-1/2	1	Pair

MODEL F-FIBER FACE MAGNEFIX JAW CAPS

- Aluminum alloy with laminated fiber cover to prevent the absorption of outside materials
- Heat parts rapidly by concentrating heat into part
- Use on workpieces to avoid distortion and clamping marks



STOCK NUMBER	MODEL	JAW WIDTH (IN.)	SHIP WEIGHT (LBS.)	CARTON PACK
14833	F-3.5	3-1/2	1	Pair
14834	F-4	4	1	Pair
14835	F-4.5	4-1/2	1	Pair
14836	F-5	5	1	Pair
14837	F-6	6	1	Pair





MODEL R-RUBBER FACE MAGNEFIX JAW CAPS

- Aluminum alloy with synthetic rubber cover
- Jaw cap conforms to workpiece and grips firmly without slipping while protecting work surface
- Use in combination with aluminum and prism jaw caps to clamp taper pins or tapered workpieces

STOCK NUMBER	MODEL	JAW WIDTH (IN.)	SHIP WEIGHT (LBS.)	CARTON PACK
14838	R-3	3	1	Pair
14839	R-3.5	3-1/2	1	Pair
14840	R-4	4	1	Pair
14841	R-4.5	4-1/2	1	Pair
14842	R-5	5	1	Pair
14872	R-5.5	5-1/2	1	Pair
14843	R-6	6	1	Pair
14875	R-6.5	6-1/2	1	Pair

MODEL P-PRISM MAGNEFIX JAW CAPS



- Jaw construction includes a 120° horizontal V-groove, three vertical V-grooves and a 90° groove for marking out and center punching
- Ideal for light tapping and thread cutting

STOCK NUMBER	MODEL	JAW WIDTH (IN.)	SHIP WEIGHT (LBS.)	CARTON PACK
14844	P-3	3	1	Pair
14845	P-3.5	3-1/2	1	Pair
14846	P-4	4	1	Pair
14847	P-4.5	4-1/2	1	Pair
14848	P-5	5	1	Pair
14873	P-5.5	5-1/2	1	Pair
14849	P-6	6	1	Pair
14876	P-6.5	6-1/2	1	Pair

POW-R-ARM MECHANICAL NO. 301



- Extra-strong, positioner with exceptionally fast on-off action, the 301 is designed for high production assembly line applications.
- Body is machined cast iron with all steel parts
- Two mounting holes at top (5/16-18) are 1" apart

STOCK NUMBER	MODEL	WORKHOLDING CAPACITY (LBS.)	BASE DIAMETER (IN.)	DIAMETER BOLT CIRCLE (IN.)	EXTENDED HEIGHT (IN.)	SHIP WEIGHT (LBS.)	CARTON PACK
16240	301	70	5-15/16	5	10-1/2	13	1

POW-R-ARM HYDRAULIC NO. 303

- Same size and strength as Model 301 with hydraulic locking action
- Rated for heavy-duty assembly, welding, maintenance and tool room work
- Hydraulic system is hand operated, self-contained and sealed with replaceable cups
- Two mounting holes at top (5/16-18) holes 1" apart



STOCK NUMBER	MODEL	WORKHOLDING CAPACITY (LBS.)	BASE DIAMETER (IN.)	DIAMETER BOLT CIRCLE (IN.)	EXTENDED HEIGHT (IN.)	SHIP WEIGHT (LBS.)	CARTON PACK
16300	303	150	5-7/8	5	10-1/2	14	1

POW-R-ARM JUNIOR NO. 343

- Fast on-off action with horizontal-moving lock handle
- Body is cast aluminum with steel parts
- 3" diameter mounting pad with two 1/4 - 20 holes 180° apart. Four slotted equally spaced 9/32" diameter mounting holes



STOCK NUMBER	MODEL	WORKHOLDING CAPACITY (LBS.)	BASE DIAMETER (IN.)	DIAMETER BOLT CIRCLE (IN.)	EXTENDED HEIGHT (IN.)	SHIP WEIGHT (LBS.)	CARTON PACK
16180	343	30	4-1/4	2-1/4	5	4	1

POW-R-ARM VEEP NO. 344

- Design provides more work-holding capacity and faster on-off action
- Horizontal handle is easily accessible and dwells below level of work
- Steel body is cadmium plated with cast iron base
- Mounting hole at top is 1/2" diameter x 1/2" deep with set screw to hold a fixture
- Four 1/4" diameter equally spaced slotted mounting holes
- For light production assembly or electronic applications



STOCK NUMBER	MODEL	WORKHOLDING CAPACITY (LBS.)	BASE DIAMETER (IN.)	DIAMETER BOLT CIRCLE (IN.)	EXTENDED HEIGHT (IN.)	SHIP WEIGHT (LBS.)	CARTON PACK
16120	344	20	3-3/4	3-3/8	4-1/4	3	1



**POW-R-ARM MIDGET NO. 345**

Recommended for intricate electronic work including small printed circuits.

- Fast on/off action with horizontal handle
- All steel parts
- Mounting stud at top is 5/16-24 x 15/32" long

STOCK NUMBER	MODEL	WORKHOLDING CAPACITY (LBS.)	BASE DIAMETER (IN.)	DIAMETER BOLT CIRCLE (IN.)	EXTENDED HEIGHT (IN.)	SHIP WEIGHT (LBS.)	CARTON PACK
16060	345	6	2-1/2	1-7/8	1-1/4	1	1



**40 SERIES DROP FORGED C-CLAMPS**

- Extra heavy-duty, partial closing
- Drop-forged frame is heat-treated for greater strength
- Full length, large diameter spindles are hardened to prevent bending while protecting threads

STOCK NUMBER	OPENING CAPACITY (IN.)	THROAT DEPTH (IN.)	CLAMP PRESURE (LBS.)	SPINDLE DIAMETER (IN.)	SHIP WEIGHT (LBS.)
27204	1/4 – 2	1-7/8	12,500	3/4	3-3/4
27205	1/4 – 3-1/4	2-1/2	16,250	7/8	6-1/2
27206	1/2 – 4-1/2	2-3/4	20,000	7/8	10
27207	2-1/4 – 5-1/2	2-3/4	23,800	7/8	13
27208	1-1/2 – 6-1/2	2-3/4	27,500	1-1/8	17
27209	3-1/2 – 8-1/2	2-3/4	31,250	1-1/8	24
27210	6-1/4 – 10-1/2	2-3/4	35,000	1-1/8	29
27211	7-1/2 – 12-1/2	2-3/4	40,000	1-1/8	40



**"0" SERIES - EXTRA HEAVY-DUTY C-CLAMPS**

- The full closing, extra heavy-duty models are designed to stand up to the demands of heavy industrial applications like those encountered in ship building
- With clamping pressure ranging up to 40,000 lbs., machined, square spindle heads stand up to heavy wrench tightening use
- Special quality steels are utilized in the forged construction of the frames, while spindles are machined from a single piece of square, cold drawn steel, hardened and tempered and are black-oxide coated

STOCK NUMBER	MODEL	OPENING CAPACITY (IN.)	THROAT DEPTH (IN.)	SPINDLE DIAMETER (IN.)	CLAMP PRESURE (LBS.)	SHIP WEIGHT (LBS.)	CARTON PACK	REPLACEMENT SPINDLE ASSEMBLY
14509	0 F.C.	0 – 3/4	3/4	3/8	2800	1/2	2	20201-35
14518	1 F.C.	0 – 1-7/16	1-1/8	7/16	5600	1-1/4	2	20203-35
14527	1-1/2 F.C.	0 – 1-7/8	1-5/8	5/8	8750	2	1	20203-35
14536	2 F.C.	0 – 2-3/8	1-3/4	3/4	12,500	4-1/4	1	07142-35
14545	3 F.C.	0 – 3-3/8	2-3/8	7/8	16,250	7-1/4	1	07161-35
14554	4 F.C.	0 – 4-1/2	2-3/4	7/8	20,000	10-3/4	1	07147-35
14563	5 F.C.	0 – 5-1/2	3-1/8	7/8	23,800	13-1/4	1	07162-35
14572	6 F.C.	0 – 6-1/2	3-3/8	1-7/8	27,500	18	1	07149-35
14581	8 F.C.	0 – 8-1/2	4-1/8	1-1/8	31,250	25-3/4	1	07150-35
14590	10 F.C.	0 – 10-1/2	4-1/8	1-1/8	35,000	32-1/2	1	07151-35
14599	12 F.C.	0 – 12-1/4	4-1/4	1-1/8	40,000	41-1/2	1	07152-35

**100 SERIES HEAVY-DUTY C-CLAMPS**

- Recommended for heavy industrial and construction job site demands, the heavy-duty models are some of the toughest products available for their weight to strength ratio
- 100 Series model frames are forged of superior quality steels
- Spindles are turned from single pieces of square bar stock, and thread modified National Course for superior clamping force and are black-oxide coated
- PERMA-PAD® is standard and is also black-oxide coated



STOCK NUMBER	MODEL	OPENING CAPACITY (IN.)	THROAT DEPTH (IN.)	SPINDLE DIAMETER (IN.)	CLAMP PRESURE (LBS.)	SHIP WEIGHT (LBS.)	CARTON PACK	PERMA-PAD COMPLETE	SPINDLE ASSEMBLY
14114	102	0 – 2	1-1/2	9/16	7,500	1-3/4	1	2901300	1700010
14128	103	0 – 3	2	5/8	8,750	3	1	2901300	1700020
14142	104	0 – 4	2-3/8	3/4	10,000	4-3/4	1	2901310	1700030
14156	106	2 – 6	2-1/2	3/4	11,250	6-5/8	1	2901310	1700030
14170	108	4 – 8	2-5/8	3/4	12,500	7-1/2	1	2901310	1700030
14184	110	6 – 10	2-3/4	3/4	13,750	9-3/4	1	2901310	1700030
14198	112	8 – 12	2-7/8	3/4	15,000	11-7/8	1	2901310	1700030

**400 SERIES DROP FORGED C-CLAMPS**

Industry's top choice for maintenance, production and repair operations

- Drop-forged steel frame, regular-duty with extra deep-throat
- Black-oxide coated spindles and PERMA-PAD® resist corrosion, and are replaceable
- Innovative frame geometry for maximum strength
- Also available with exclusive WILTON-GRIP® handle for increased clamping speed and comfort



STOCK NUMBER	MODEL	OPENING CAPACITY (IN.)	THROAT DEPTH (IN.)	SPINDLE DIAMETER (IN.)	CLAMP PRESURE (LBS.)	SHIP WEIGHT (LBS.)	CARTON PACK	REPLACEMENT PERMA-PAD COMPLETE	REPLACEMENT SPINDLE ASSEMBLY
14214	402	0 – 2-1/8	2-1/4	9/16	3500	2	2	2901300	1701080
14228	403	0 – 3	2-1/2	9/16	3500	3	2	2901300	1701160
14242	404	0 – 4-1/4	3-1/4	3/4	6200	4	2	2901310	1700150
14256	406	0 – 6-1/16	4-1/8	3/4	6600	6	2	2901310	1700170
14270	408	0 – 8-1/4	5	3/4	6900	7	1	2901310	1700190
14284	410	2 – 10-1/8	6	3/4	8000	11	1	2901310	1700190
14298	412	2 – 12-1/4	6-5/16	7/8	9300	15	1	2901310	1700220

400 SERIES CLAMP WITH WILTON-GRIP® HANDLE									
STOCK NUMBER	MODEL	OPENING CAPACITY (IN.)	THROAT DEPTH (IN.)	SPINDLE DIAMETER (IN.)	CLAMP PRESURE (LBS.)	SHIP WEIGHT (LBS.)	CARTON PACK	REPLACEMENT PERMA-PAD COMPLETE	REPLACEMENT SPINDLE ASSEMBLY
63153	404-STG	0 – 4-1/4	3-1/4	3/4	6200	4	2	2901310	1700150
63154	406-STG	0 – 6-1/16	4-1/8	3/4	6600	6	1	2901310	1700170
63155	408-STG	0 – 8-1/4	5	3/4	6900	7	1	2901310	1700190



400-SF SERIES FORGED, HIGH VISIBILITY GROOVED ANVIL C-CLAMPS



- Drop-forged, regular-duty with extra deep-throat
- Coated in high-visibility yellow which conforms to the OSHA safety color standard for physical hazards regulation no. 1910.144
- Powder-coated paint resists scratches and corrosion while providing a tough, durable finish
- Spindles are precision cut alloy steel, single lead, acme threaded for continuous smooth operation; black-oxide coated for corrosion resistance

STOCK NUMBER	MODEL	OPENING CAPACITY (IN.)	THROAT DEPTH (IN.)	SPINDLE DIAMETER (IN.)	CLAMP PRESURE (LBS.)	SHIP WEIGHT (LBS.)	CARTON PACK	REPLACEMENT PERMA-PAD COMPLETE	REPLACEMENT SPINDLE ASSEMBLY
14300	402-SF	0-2-1/8	2-1/4	9/16	3500	2	2	2901300	1701080
14301	403-SF	0-3	2-1/2	9/16	3500	3	2	2901300	1701160
14302	404-SF	0-4-1/4	3-1/4	3/4	6200	4	2	2901310	1700150
14303	406-SF	0-6-1/16	4-1/8	3/4	6600	6	1	2901310	1700170
14305	408-SF	0-8-1/4	5	3/4	6900	7	1	2901310	1700190
14306	410-SF	2-10-1/8	6	3/4	8000	11	1	2901310	1700190
14307	412-SF	2-12-1/4	6-5/16	7/8	9300	15	1	2901310	1700220

400-P SERIES WELDING FORGED C-CLAMPS



- Drop-forged, regular-duty with extra deep-throat.
- Same features as WILTON® 400 series, except for copper plated spindles and PERMA-PAD® for resistance to welding spatter and corrosion

STOCK NO.	MODEL	OPENING CAPACITY (IN.)	THROAT DEPTH (IN.)	SPINDLE DIAMETER (IN.)	CLAMP PRESURE (LBS.)	SHIP WEIGHT (LBS.)	CARTON PACK	REPLACEMENT PERMA-PAD COMPLETE	REPLACEMENT SPINDLE ASSEMBLY
14215	402-P	0-2-1/8	2-5/8	9/16	3,500	2	2	2901330	1701090
14229	403-P	0-3	2-1/2	5/8	3,500	3	2	2901330	1701110
14243	404-P	0-4-1/4	3-1/4	3/4	6,200	4	2	2901340	1700160
14257	406-P	0-6-1/16	4-1/8	3/4	6,600	6	1	2901340	1700180
14271	408-P	0-8-1/4	5	3/4	6,900	7	1	2901340	1700210
14285	410-P	2-10-1/8	6	3/4	8,000	11	1	2901340	1700210
14299	412-P	2-12-1/4	6-5/16	7/8	9,300	15	1	2901340	1700230

400-SEP SERIES SLIPNOT® C-CLAMPS



- Drop-forged, regular-duty with extra deep-throat.
- Grooved anvil, combined with a deeply serrated Perma-Pad® on the spindle, for increased gripping power
- Spindles and Perma-Pads® are copper plated for resistance

STOCK NUMBER	MODEL	OPENING CAPACITY (IN.)	THROAT DEPTH (IN.)	SPINDLE DIAMETER (IN.)	CLAMP PRESURE (LBS.)	SHIP WEIGHT (LBS.)	CARTON PACK	REPLACEMENT PERMA-PAD COMPLETE	REPLACEMENT SPINDLE ASSEMBLY
15978	402SEP	0-2-1/8	2-5/16	9/16	3500	2	2	2907730	1701090
15979	403SEP	0-3	2-1/2	5/8	3500	3	2	2907730	1701110
15980	404SEP	0-4-1/2	3-1/4	3/4	6200	4	2	2907740	1700160
15981	406SEP	0-6-1/16	4-1/8	3/4	6600	6	1	2907740	1700180
15982	408SEP	0-8-1/4	5	3/4	6900	7	1	2907740	1700210
15983	410SEP	2-10-1/8	6	3/4	8000	11	1	2907740	1700210
15984	412SEP	2-12-1/4	6-5/16	7/8	9300	15	1	2907740	1700230

WILTON / HARGRAVE 400 SERIES DROP-FORGED C-CLAMPS

Drop-forged, regular-duty with extra deep-throat.

- Improved frame design allows for a higher proof test, greater throat depth, and lower overall weight
- Acme rolled spindle threads provide maximum strength and clamping force
- Exceptional value and performance



STOCK NUMBER	MODEL	OPENING CAPACITY (IN.)	THROAT DEPTH (IN.)	SPINDLE DIAMETER (IN.)	CLAMP PRESSURE (LBS.)	SHIP WEIGHT (LBS.)	CARTON PACK
20301	H402	0-2	2	1/2	3,500	2	2
20302	H403	0-3	2-3/8	5/8	3,500	2	2
20303	H404	0-4	2-3/4	3/4	6,200	3	2
20304	H406	0-6	3-5/8	3/4	6,600	5	2
20305	H408	0-8	4-1/2	3/4	6,900	9	1
20306	H410	0-10	5-3/8	7/8	8,000	11	1
20307	H412	0-12	5-3/4	7/8	9,500	14	1

WILTON / HARGRAVE 400-CS SERIES HIGH VISIBILITY FORGED C-CLAMPS

Drop-forged, regular-duty with extra deep-throat.

- Spatter resistant copper plated spindle
- Exceptional value high-visibility welding clamps



STOCK NUMBER	MODEL	OPENING CAPACITY (IN.)	THROAT DEPTH (IN.)	SPINDLE DIAMETER (IN.)	CLAMP PRESSURE (LBS.)	SHIP WEIGHT (LBS.)	CARTON PACK
20479	H402CS	0-2	2	1/2	3500	2	2
20481	H403CS	0-3	2-3/8	5/8	3500	2	2
20483	H404CS	0-4	2-3/4	3/4	6200	3	2
20484	H406CS	0-6	3-5/8	3/4	6600	5	2
20485	H408CS	0-8	4-1/2	3/4	6900	9	1
20486	H410CS	0-10	5-3/8	7/8	8000	11	1
20487	H412CS	0-12	5-3/4	7/8	9500	14	1

WILTON / HARGRAVE 566/568 JUNIOR® C-CLAMP SERIES

- Ductile/malleable iron castings are desired for close work in pattern and mold making
- Used extensively in the aircraft/aerospace industry because of their weight to strength ratio
- Also available with nylon caps on the tips, as well as nylon inserts which are securely fixed to the foot of the clamp



STOCK NUMBER	MODEL	OPENING CAPACITY (IN.)	THROAT DEPTH (IN.)	CLAMP PRESURE (LBS.)	SHIP WEIGHT (LBS.)	CARTON PACK
22105	H566	0-1-1/4	1-1/4	450	1/4	72
22115	H566N	0-1-1/4	1-3/16	550	1/4	72
22116	H568N	0-2-1/2	2-5/16	550	3/4	24



4400 SERIES C-CLAMPS

- Drop-forged, regular-duty, extra deep-throat
- The "square-throat" design of the 4400 series means capacity
- WILTON® 4" 4400 model offers more throat depth than most conventional 6" clamps, and the 6" and 8" models yield 37% more throat depth than standard deep-throat C-Clamps.

STOCK NUMBER	MODEL	OPENING CAPACITY (IN.)	THROAT DEPTH (IN.)	SPINDLE DIAMETER (IN.)	CLAMP PRESSURE (LBS.)	SHIP WEIGHT (LBS.)	CARTON PACK	REPLACEMENT PERMA-PAD COMPLETE	REPLACEMENT SPINDLE ASSEMBLY
14350	4404	0-4	4	3/4	4100	4-5/8	2	2901310	1700150
14375	4406	0-6	5	3/4	5400	6-5/8	1	2901310	1700170
14400	4408	2-8	6	3/4	5900	10-1/2	1	2901310	1700170

140 SERIES CARRIAGE C-CLAMPS



- Most popular C-clamp style for over 50 years
- Rugged ductile iron frames with black-oxide screws, swivels and sliding crosspin handles
- The "original" carriage clamp designed for the home craftsman, woodworker and light industrial service

STOCK NUMBER	MODEL	OPENING CAPACITY (IN.)	THROAT DEPTH (IN.)	CLAMP PRESSURE (LBS.)	SPINDLE DIAMETER (IN.)	SHIP WEIGHT (LBS.)	CARTON PACK
41405	143C	0-3	2	1430	7/16	1	12
41406	144C	0-4	2-3/4	1535	1/2	2	6
41407	145C	0-5	3	1225	5/8	3	6
41408	146C	0-6	3-1/4	1400	5/8	3	6
41409	148C	0-8	4	1700	3/4	4	6
41411	141C	0-1	1-1/16	645	1/4	1	12
41416	141-1/2C	0-1-1/2	1-1/2	820	5/16	1	12
41421	142C	0-2	1-1/8	800	5/16	1	12
41423	1422C	0-2-1/2	1-7/16	850	3/8	1	12
41426	142-1/2C	0-2-1/2	2-1/2	1005	3/8	1	12

SUPER-JUNIOR® FORGED C-CLAMPS



- Super-Junior® clamps are forged steel with heat treated frames to provide a much stronger clamp than pressed steel or malleable clamps
- Steel screws are zinc plated for longer life

STOCK NUMBER	MODEL	OPENING CAPACITY (IN.)	THROAT DEPTH (IN.)	CLAMP PRESSURE (LBS.)	SHIP WEIGHT (LBS.)	CARTON PACK
21301	50	0-1	1	500	1	12
21302	51	0-1	1-1/2	500	1	12
21303	52	0-1-1/4	1-1/4	800	1	12
21304	53	0-1-1/2	1-1/2	850	1	12
21305	54	0-2	1-1/4	875	1	12
21306	55	0-3	1-3/8	1100	1	12
21307	56	0-2-1/2	2-1/2	850	1	12

800 SERIES FORGED C-CLAMPS

- Drop-forged, regular-duty with standard-throat depth.
- A value alternative for clamping, not requiring as much throat depth or clamping pressure as a 400 series clamp
- Drop forged, equipped with Wilton® Perma-Pads® and a precision-cut, single-lead acme thread



STOCK NUMBER	MODEL	OPENING CAPACITY (IN.)	THROAT DEPTH (IN.)	SPINDLE DIAMETER (IN.)	MIN.PROOF TEST (LBS.)	SHIP WEIGHT EACH (LBS.)	CARTON PACK	PERMA-PAD COMPLETE	SPINDLE ASSEMBLY
14714	802	0-2	1-13/16	9/16	2,700	2	6	2901300	1701080
14728	803	0-3	1-15/16	9/16	3,000	2	6	2901300	1701160
14742	804	0-4	2-5/16	5/8	3,700	3	6	2901300	1700750
14756	806	0-6	2-15/16	5/8	4,500	4	6	2901300	1700740
14770	808	0-8	3-7/16	3/4	5,200	7	1	2901310	1700190
14784	810	1-1/2-10	3-3/4	3/4	6,000	9	1	2901310	1700190
14798	812	1-1/8-12	3-7/8	3/4	8,000	12	1	2901310	1700630

540A SERIES CARRIAGE C-CLAMPS

- Frames made from high strength ductile iron castings
- Sliding pin (vise type) handle, single acme thread rolled spindle and oscillating ball and socket tip



STOCK NUMBER	MODEL	OPENING CAPACITY (IN.)	THROAT DEPTH (IN.)	SPINDLE DIAMETER (IN.)	CLAMP PRESSURE (LBS.)	SHIP WEIGHT (LBS.)	CARTON PACK
22001	540A-2-1/2	0-2-1/2	1-3/4	1/2	1110	1	6
22002	540A-3	0-3	1-7/8	1/2	1800	2	6
22003	540A-4	0-4	2-1/16	5/8	2150	3	6
22004	540A-5	0-5	2-1/2	5/8	2250	3	6
22005	540A-6	0-6	2-3/4	5/8	2450	4	6
22006	540A-8	0-8	3-1/4	3/4	2750	5	2
22007	540A-10	0-10	3-5/8	7/8	2850	8	2
22008	540A-12	0-12	3-5/8	7/8	2850	8	1
22009	540A-14	0-14	3-3/4	7/8	2850	11	1

43 SERIES, HEAVY-DUTY, DEEP-THROAT C-CLAMPS

- Spindles are made of special bronze alloy (solid, not plated or coated) that resists weld spatter
- The acme rolled spindles are large in diameter to prevent bending or breaking
- Oscillating (ball and socket) tip is steel-built to last, won't fall off
- Frames are drop forged steel, and drilled for ground connections



STOCK NUMBER	MODEL	OPENING CAPACITY (IN.)	THROAT DEPTH (IN.)	SPINDLE DIAMETER (IN.)	CLAMP PRESSURE (LBS.)	SHIP WEIGHT (LBS.)
20601	H43-4	0-4	2-1/2	7/8	10,000	4-3/4
20602	H43-6	0-6	2-3/4	1	11,250	6-1/3
20603	H43-8	2-3/16-8	2-3/4	1	12,500	7-1/2



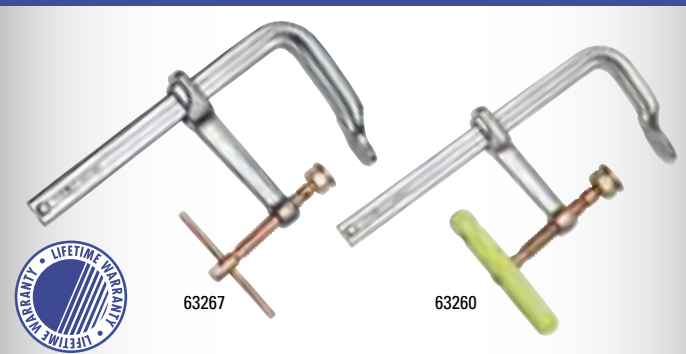


48 SERIES DEEP-REACH SUPERCLAMPS®

- Drop-forged steel frame and unique design make this an excellent clamp for users with deep-reach requirements and medium service clamping capacity

STOCK NUMBER	OPENING CAPACITY (IN.)	THROAT DEPTH (IN.)	SPINDLE DIAMETER (IN.)	CLAMP PRESSURE (LBS.)	SHIP WEIGHT (LBS.)
21201	0-6	8	5/8	2,200	8-3/4
21202	0-8	12	3/4	1,800	11-1/2
21204	0-12	16	3/4	1,500	19-1/2

COPPER PLATED L-CLAMPS

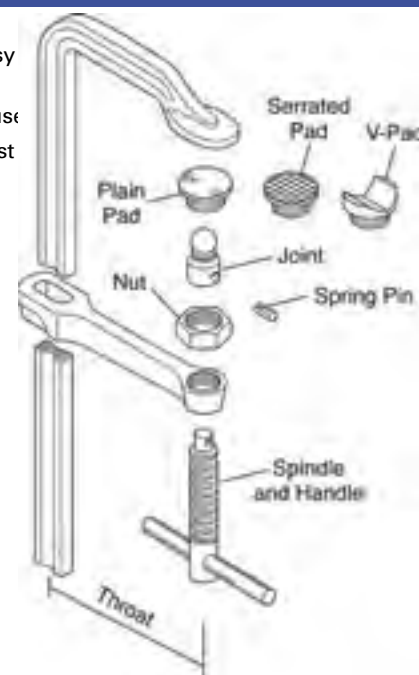


- Forged sliding arm design reduces clamping setup time
- New hex nut design makes replacing pads and spindles easy
- Copper plated spindles and PERMA-PAD® resist welding spatter
- Exclusive, ergonomic WILTON-GRIP® provides comfort, speed and visibility (included on many sizes)

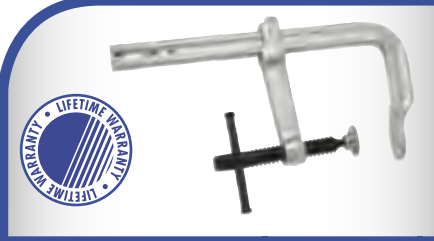
STOCK NUMBER	MODEL	NOMINAL OPENING CAPACITY (IN.)	THROAT DEPTH (IN.)	NOMINAL RAIL SIZE (IN.)	CLAMP PRESSURE (LBS.)	NOMINAL SPINDLE DIAMETER (IN.)	SHIP WEIGHT (LBS.)	CARTON PACK
<b>LIGHT-DUTY L-CLAMPS WITH WILTON-GRIP® HANDLES</b>								
63249	6306B	6	3	5/8 x 5/16	1000	9/16	2	1
63250	6308B	8	4	3/4 x 3/8	1000	5/8	2	1
63251	6310B	10	4-3/4	7/8 x 7/16	1500	5/8	3	1
63252	6312B	12	5-1/2	1 x 15/32	1600	3/4	4	1
63253	6316B	16	4-3/4	1 x 15/32	1600	3/4	5	1
63254	6320B	20	4-3/4	1 x 15/32	1600	3/4	5	1
63255	6324B	24	4-3/4	1 x 15/32	1600	3/4	6	1
63256	6332B	32	4-3/4	1-11/16 x 1/2	2000	3/4	7	1
63257	6340B	40	4-3/4	1-11/16 x 1/2	2000	3/4	8	1
63258	6348B	48	4-3/4	1-11/16 x 1/2	2000	3/4	9	1
<b>REGULAR-DUTY L-CLAMPS WITH WILTON-GRIP® HANDLES</b>								
63259	6410B	10	4-3/4	1-3/16 x 9/16	2600	3/4	7	1
63260	6412B	12	5-1/2	1-3/16 x 9/16	2600	3/4	7	1
63261	6416B	16	4-3/4	1-3/16 x 9/16	2600	3/4	8	1
63262	6420B	20	5-1/2	1-3/16 x 9/16	2600	3/4	9	1
63263	6432B	32	4-3/4	1-3/16 x 9/16	2600	3/4	10	1
63264	6440B	40	4-3/4	1-3/16 x 9/16	2600	3/4	12	1
63265	6448B	48	4-3/4	1-3/16 x 9/16	2600	3/4	14	1
63266	6460B	60	4-3/4	1-3/16 x 9/16	2600	3/4	16	1
<b>HEAVY-DUTY L CLAMPS</b>								
63267	6512B	12	7	1-9/16 x 3/4	4800	7/8	12	1
63268	6516B	16	7	1-9/16 x 3/4	4800	7/8	14	1
63269	6520B	20	7	1-9/16 x 3/4	4800	7/8	15	1
63270	6524B	24	7	1-9/16 x 3/4	4800	7/8	16	1
63271	6532B	32	7	1-9/16 x 3/4	4800	7/8	18	1
63272	6540B	40	7	1-9/16 x 3/4	4800	7/8	21	1
63273	6548B	48	7	1-9/16 x 3/4	4800	7/8	24	1
63274	6560B	60	7	1-9/16 x 3/4	4800	7/8	27	1
<b>HEAVY-DUTY L CLAMPS WITH SERRATED PADS</b>								
63279	6512BSE	12	7	1-9/16 x 3/4	4800	7/8	12	1
63280	6516BSE	16	7	1-9/16 x 3/4	4800	7/8	14	1
63281	6520BSE	20	7	1-9/16 x 3/4	4800	7/8	15	1
63282	6524BSE	24	7	1-9/16 x 3/4	4800	7/8	16	1

COPPER PLATED L-CLAMP REPLACEMENT PARTS

- New hex nut design makes replacing pads and spindles easy
- Pad tilts up to 36° with swivel ball joint for wider application use
- Exclusive copper plating to resist welding spatter



CLAMP STOCK NUMBER	CLAMP MODEL	PLAIN PAD STOCK NUMBER	SERRATED PAD STOCK NUMBER	V-PAD STOCK NUMBER	NUT STOCK NUMBER	JOINT WITH SPRING PIN STOCK NUMBER	SPINDLE AND T-HANDLE WITH SPRING PIN STOCK NUMBERING
63249	6306B	-	-	-	-	-	-
63250	6308B	2909100	2909200	2909300	1701700	1701500	1701600
63251	6310B	2909100	2909200	2909300	1701700	1701500	1701600
63252	6312B	2909101	2909201	2909301	1701701	1701501	1701601
63253	6316B	2909101	2909201	2909301	1701701	1701501	1701601
63254	6320B	2909101	2909201	2909301	1701701	1701501	1701601
63255	6324B	2909101	2909201	2909301	1701701	1701501	1701601
63256	6332B	2909101	2909201	2909301	1701701	1701501	1701601
63257	6340B	2909101	2909201	2909301	1701701	1701501	1701601
63258	6348B	2909101	2909201	2909301	1701701	1701501	1701601
<b>REGULAR-DUTY L-CLAMPS WITH WILTON-GRIP® HANDLES</b>							
63259	6410B	2909102	2909202	2909302	1701702	1701502	1701602
63260	6412B	2909102	2909202	2909302	1701702	1701502	1701602
63261	6416B	2909102	2909202	2909302	1701702	1701502	1701602
63262	6420B	2909102	2909202	2909302	1701702	1701502	1701602
63263	6432B	2909102	2909202	2909302	1701702	1701502	1701602
63264	6440B	2909102	2909202	2909302	1701702	1701502	1701602
63265	6448B	2909102	2909202	2909302	1701702	1701502	1701602
63266	6460B	2909102	2909202	2909302	1701702	1701502	1701602
<b>HEAVY-DUTY L-CLAMPS</b>							
63267	6512B	2909102	2909202	2909302	1701702	1701502	1701603
63268	6516B	2909102	2909202	2909302	1701702	1701502	1701603
63269	6520B	2909102	2909202	2909302	1701702	1701502	1701603
63270	6524B	2909102	2909202	2909302	1701702	1701502	1701603
63271	6532B	2909102	2909202	2909302	1701702	1701502	1701603
63272	6540B	2909102	2909202	2909302	1701702	1701502	1701603
63273	6548B	2909102	2909202	2909302	1701702	1701502	1701603
63274	6560B	2909102	2909202	2909302	1701702	1701502	1701603
<b>HEAVY-DUTY L-CLAMPS WITH SERRATED PADS</b>							
63279	6512BSE	2909102	2909202	2909302	1701702	1701502	1701603
63280	6516BSE	2909102	2909202	2909302	1701702	1701502	1701603
63281	6520BSE	2909102	2909202	2909302	1701702	1701502	1701603
63282	6524BSE	2909102	2909202	2909302	1701702	1701502	1701603



ECONOMY SERIES L-CLAMPS

- Versatile, economy series L-clamps are designed for economical repetitive clamping
- Offers generous throat depth, substantial clamping pressure at a competitive price
- Steel swivel pads provide secure clamping
- Black-oxide coating on spindle resists rust

STOCK NUMBER	MODEL	NOMINAL OPENING CAPACITY (IN.)	THROAT DEPTH (IN.)	NOMINAL RAIL SIZE (IN.)	CLAMP PRESSURE (LBS.)	NOMINAL SPINDLE DIAMETER (IN.)	SHIP WEIGHT (LBS.)	CARTON PACK
63056	606	6	4-3/4	7/8 x 7/16	1500	1/2	2	1
63057	608	8	4-3/4	7/8 x 7/16	1500	5/8	2	1
63058	610	10	4-3/4	1-3/16 x 9/16	2600	5/8	3	1
63059	612	12	4-3/4	1-3/16 x 9/16	2600	3/4	4	1
63191	616	16	4-3/4	1-3/16 x 9/16	2600	3/4	5	1
63192	620	20	4-3/4	1-3/16 x 9/16	2600	3/4	5	1
63193	624	24	4-3/4	1-3/16 x 9/16	2600	3/4	6	1

REPLACEMENT PARTS

STOCK NUMBER	MODEL	PLAIN PAD STOCK NUMBER	SERRATED PAD STOCK NUMBER	V-PAD STOCK NUMBER	NUT STOCK NUMBER	JOINT WITH SPRING PIN STOCK NUMBER	SPINDLE AND T-HANDLE WITH SPRING PIN
63056	606	N/A	N/A	N/A	N/A	N/A	N/A
63057	608	2909100	2909200	2909300	1701700	1701500	1701600
63058	610	2909100	2909200	2909300	1701700	1701500	1701600
63059	612	2909101	2909201	2909301	1701701	1701501	1701601
63191	616	2909101	2909201	2909301	1701701	1701501	1701601
63192	620	2909101	2909201	2909301	1701701	1701501	1701601
63193	624	2909101	2909201	2909301	1701701	1701501	1701601

REGULAR-DUTY I BAR CLAMPS



- A rapid acting powerful clamp designed and constructed for hard, everyday production work.
- Patented, quick action, no slip clutches are 3/4" apart and formed in the web for greater bar strength
- High strength ductile slide cannot slip or bind, easily released
- Steel handle, with comfortable wood crank handle for fast clamping
- Bar dimension is 7/16" x 1-1/2" x 5/32", screw diameter is 5/8"
- Throat depth is 1-13/16" and clamp face is 1-7/8"

STOCK NUMBER	MAX. OPENING (IN.)	CLAMP PRESSURE (LBS.)	SHIP WEIGHT (LBS.)
21801	2	6,000	7
21802	2-1/2	6,000	7-1/2
21803	3	6,000	8
21804	4	6,000	9-1/2
21805	5	6,000	10-1/2
21806	6	6,000	12

LIGHT-DUTY STEEL BAR CLAMPS



The ideal clamps for the cabinet maker, woodworker, craftsman and for light duty metal applications.

- Ratcheting clutch provides quick adjustment at any point
- Long, woodscrew handles (3-1/2") for secure hold and easy gripping
- Protective caps included to prevent marring of work
- 1/4" x 3/4" zinc plated steel bar, 3/4" swivel pad, 2-1/2" throat depth
- Ductile frame with baked enamel finish

STOCK NUMBER	SIZE (IN.)	THROAT DEPTH (IN.)	CLAMP PRESSURE (LBS.)	SHIP WEIGHT (LBS.)	CARTON PACK
42906	6	2-1/2	800	1.5	6
42912	12	2-1/2	800	1.9	6
42918	18	2-1/2	800	2.1	6
42924	24	2-1/2	800	2.5	6
42930	30	2-1/2	800	2.9	6
42936	36	2-1/2	800	3.2	6

REGULAR-DUTY STEEL BAR CLAMPS

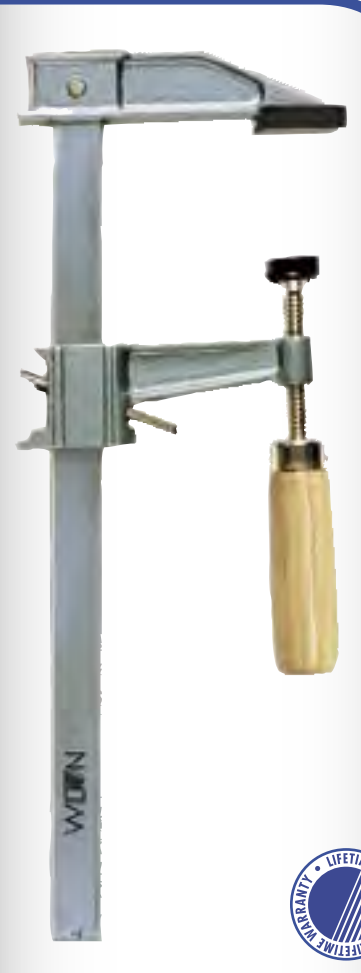
- The ideal clamps for the metalworker, woodworker and craftsman
- Long, woodscrew handles (4-1/8") for secure hold and easy gripping
- Protective caps included to prevent marring of work
- Ratcheting clutch provides quick adjustment at any point
- 5/16" x 1" zinc plated steel bar, 1" swivel pad, 3-1/2" throat depth
- Ductile frame with baked enamel finish

STOCK NUMBER	SIZE (IN.)	THROAT DEPTH (IN.)	CLAMP PRESSURE (LBS.)	SHIP WEIGHT (LBS.)	CARTON PACK
53306	6	3-1/2	1000	2.5	6
53312	12	3-1/2	1000	3	6
53318	18	3-1/2	1000	3.5	6
53324	24	3-1/2	1000	4	6
53336	36	3-1/2	1000	5.1	6

HEAVY-DUTY STEEL BAR CLAMPS

- Heavy-duty bar clamp design, ideal for the metalworker, woodworker and craftsman
- Ratcheting clutch provides quick adjustment at any point
- Long, woodscrew handles (4-3/4") for secure hold and easy gripping
- 5/16" x 1" zinc plated steel bar, 1" swivel pad, 5" throat depth
- Ductile frame with baked enamel finish

STOCK NUMBER	SIZE (IN.)	THROAT DEPTH (IN.)	CLAMP PRESSURE (LBS.)	SHIP WEIGHT (LBS.)	CARTON PACK
53506	6	5	1600	4.5	6
53512	12	5	1600	5	6
53518	18	5	1600	5.9	6
53524	24	5	1600	6.3	6
53536	30	5	1600	8.2	6





**NEW!**



**WELDERS SHOE CLAMP SYSTEM**

- Flexible design reduces number of clamps needed, set up time and storage space
- Reaches where conventional clamps cannot, can be located anywhere on a fixture, table or fabricated piece
- Direct clamp mounting — quicker and easier for aligning and leveling plates and sheets
- Easy loading and unloading — clamps slides easily in and out of shoe
- Bolt or weld on shoe — shoe can stay in place while clamps are used in other set-ups



STOCK NUMBER	NOMINAL OPENING (IN.)	THROAT DEPTH (IN.)	NOMINAL RAIL SIZE (IN.)	NOMINAL CLAMPING PRESSURE (LBS.)	NOMINAL SPINDLE DIAMETER (IN.)	SHIP WEIGHT (LBS.)	CARTON PACK
63295	8 1/2	5 1/2	1-3/16 X 9/16	2600	3/4	9	1
<b>REPLACEMENT SHOE</b>							
63299						1.8	6

**SPEED CLAMPS, 2-1/2" THROAT DEPTH**

- Made of notched hardened steel, zinc plated 6 x 25mm I-rail designed to reduce flexing
- Ductile cast iron jaws with non-marring pads
- Ergonomic handle designed for a sure grip and increased clamping pressure

STOCK NUMBER	THROAT DEPTH (IN.)	MAX OPENING (IN.)	LOAD STRENGTH NOMINAL (LBS.)	SHIP WEIGHT (LBS.)	CARTON PACK
43012	2-1/2	12	1050	2-1/4	6
43020	2-1/2	20	1050	3	6
43024	2-1/2	24	1050	3	6
43036	2-1/2	36	1050	3-1/2	6
43040	2-1/2	40	1050	4	6

**SPEED CLAMPS, DEEP REACH, 4" THROAT DEPTH**

- Made of notched hardened steel zinc, plated 7 x 27mm I-rail designed to reduce flexing
- Ductile cast iron jaws with non-marring pads
- Ergonomic handle designed for a sure grip and increased clamping force

STOCK NUMBER	THROAT DEPTH (IN.)	MAX OPENING (IN.)	CLAMP PRESSURE (LBS.)	SHIP WEIGHT (LBS.)	CARTON PACK
43112	4	12	1000	2-3/4	6
43124	4	24	1000	3-3/4	6
43136	4	36	1000	4-1/2	6
43140	4	40	1000	4-3/4	6



**MEDIUM DUTY STEEL BAR CLAMPS**

- Ergonomic SUMOGRIP® handle for a sure grip
- 30% more clamping pressure than standard bar clamps
- Non-marring rubber pads provide protective cushion against damage to finished woodwork, fine metal, and plastic surfaces



STOCK NUMBER	THROAT DEPTH (IN.)	MAX OPENINGS (IN.)	CLAMP PRESSURE (LBS.)	SHIP WEIGHT (LBS.)	CARTON PACK
42806	2-1/2	6	850	10	6
42812	2-1/2	12	850	12	6
42818	2-1/2	18	850	14	6
42824	2-1/2	24	850	15	6
42836	2-1/2	36	850	19	6
42840	8 piece SUMOGRIP® Bar Clamp Pads			1	6

**T-BARS**

- Malleable iron head and slide allow these bars to be used in heavy-duty applications
- Main screw has rolled Acme threads for smooth movement and increased resistance to wear
- Sliding head is fastened to the T-Bar by inserting a steel pin through any of the holes located on the bar
- Designed for applications that require extra resilience under extreme pressure
- Can be permanently fixed onto the workbench



STOCK NUMBER	CAPACITY (IN.)	OVERALL BAR LENGTH (FT.)
39100	30	3
39101	42	4
39102	54	5
39103	66	6

**WORK PROTECTING CLAMP PADS**

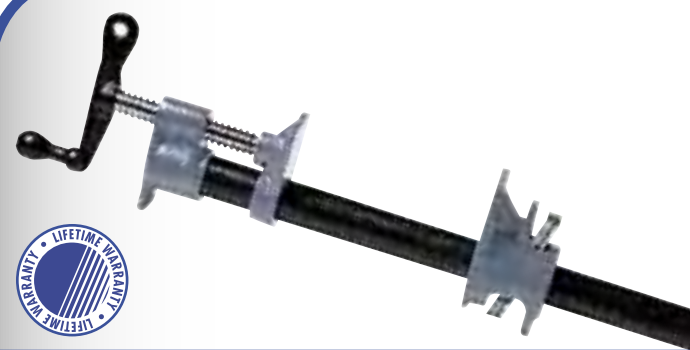
- Specially designed for WILTON®, COLUMBIAN® AND BRINK & COTTON® clamp fixtures and bar clamps but will fit any clamp face up to 1-3/4" wide.



STOCK NUMBER	PADS PER SET	SHIP WEIGHT (LBS.)
45700	4	1/4

WILTON WORKHOLDING

WILTON WORKHOLDING



450 STEEL PIPE CLAMP FIXTURES

- Designed for use on any length 1/2" or 3/4" threaded pipe
- Clamps are high strength iron and have steel components
- Multiple disc clutch provides instant adjustment, secure hold and quick release

STOCK NUMBER	MODEL	PIPE SIZE (IN.)	CLAMP FACE (IN.)	SHIP WEIGHT (LBS.)	CARTON PACK
63110	450	3/4	1-3/4	3	4
63111	452	1/2	1-1/2	2	4

453 PIPE CLAMP PADS

- Heavy-duty PVC pads that protect and hold finished woodwork and fine metal work surfaces from damage
- Good on 3/4" pipe clamp



STOCK NUMBER	MODEL	UNIT PACKAGING	SHIP WEIGHT (LBS.)	CARTON PACK
63112	453	4	1/4	12

90° ALUMINUM ANGLE CLAMP -AC-324

- Designed with self-centering jaws to quickly adjust to work pieces
- Squarely machined sides and base provide secure and precise clamping
- Oblong holes in base for use in mounting clamp to workbench



STOCK NUMBER	MODEL	THROAT DEPTH (IN.)	CAPACITY MITER (IN.)	JAW HEIGHT (IN.)	JAW LENGTH (IN.)	SHIP WEIGHT (LBS.)	CARTON PACK
44324	AC-324	4	2-3/4	1-3/8	2-1/4	2-3/4	12

AC-325 90° HEAVY DUTY STEEL ANGLE CLAMPS

- The 90° angle clamp is made of high quality cast iron
- The copper plated spindle pivots allowing the moveable jaw to securely grip parts at 90°
- Slotted holes are provided in the base for convenient workbench mounting
- Work surfaces (including base) are milled for added precision



STOCK NUMBER	MODEL	CAPACITY MITER (IN.)	JAW HEIGHT (IN.)	JAW LENGTH (IN.)	SHIP WEIGHT (LBS.)
64000	AC-325	3-11/32	1-3/8	4-1/8	8-1/2
64002	AC-326	4-3/8	2-3/8	4-1/8	18

SPRING CLAMPS

- Nickel plated for durability and corrosion resistance
- Tempered steel spring maintains substantial pressure at the jaw tips
- Ergonomic-shaped handles and jaws are available with polyvinyl covers for comfort, as well as protection of workpieces



STOCK NUMBER	MODEL	MAX. OPENING SIZE (IN.)	OVERALL LENGTH (IN.)	SHIP WEIGHT (LBS.)	CARTON PACK
<b>STEEL SPRING CLAMPS WITH PROTECTIVE HANDLES AND TIPS</b>					
14896	634	1	4	1	12
14897	636	2	6	1	12
14898	639	3	9	1	12
<b>STEEL SPRING CLAMPS WITHOUT PROTECTIVE HANDLES AND TIPS</b>					
14904	635	1	4	1	12
14905	637	2	6	1	12
14906	638	3	9	1	12

FLEX-JAW NYLON SPRING CLAMPS

- Constructed from high-strength nylon material, so it's lightweight, impact-resistant and rust-free
- Tips flex to conform to work surfaces
- Special designed handle provides comfortable grip
- Great for indoor, outdoor, hobby, camping and woodworking applications



STOCK NUMBER	MODEL	MAX. OPENING PIPE (IN.)	OVERALL SIZE (IN.)	CARTON LENGTH (IN.)	SHIP WEIGHT (LBS.)	CARTON PACK
63099	631	1	4	20	1/4	24
63098	632	2	6	20	3/8	24
63097	633	3	9	10	1-1/2	24
<b>10 PIECE SET</b>						
63103	630	4-1" spring clamps 4-2" spring clamps 2-3" spring clamps		12	3-1/4	

530 STEEL PIPE CLAMP FIXTURE-DEEP-THROAT

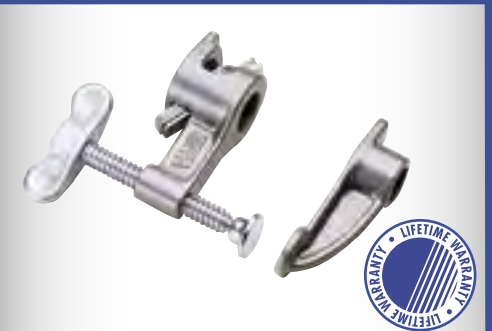
- Ideal for any applications where extra deep-reach is required
- Moveable and stationary parts are made of heavy-duty, ductile cast iron for added strength
- Multiple disc clutch provides sliding jaws with instant adjustment, secure hold and quick release
- 8-1/2 pound, 2-piece design fits on any 3/4" pipe



STOCK NUMBER	MODEL	PIPE SIZE (IN.)	CLAMP FACE (IN.)	SHIP WEIGHT (LBS.)	CARTON PACK
14870	530	3/4	2 x 1-3/4	9	1

DEEP-THROAT PIPE CLAMPS FIXTURE

- Designed for deep-reach
- May be mounted in reverse position to push or spread work apart
- Multiple disc clutch provides sliding jaws with instant adjustment, secure hold and release
- Wing nut handle for working in close quarters



STOCK NUMBER	PIPE SIZE (IN.)	CLAMP FACE (IN.)	THROAT DEPTH (IN.)	SHIP WEIGHT (LBS.)	CARTON PACK
45600	3/4	1	2-1/2	2-1/2	6



162-PIECE MECHANICS TOOL SET—1/4", 3/8", AND 1/2" DRIVE



- Professional quality in design and construction
- Quick release ratchet for fast and easy exchange of sockets
- Large, clear size markings
- Durable blow-molded case for compact storage
- Fully polished, chrome finish for easy cleaning
- Meets or exceeds ANSI specifications for wrenches: B107.6
- Tapered designed ratchets for comfortable use

STOCK NUMBER	DESCRIPTION	SHIP WEIGHT (LBS.)	CARTON PACK
36152	162-Piece Mechanics Tool Set (SAE/Metric)	33	1

SET INCLUDES:

**1/4" DRIVE**  
 Professional Ratchet with Quick Release and 3" Extension  
 Standard 6pt. Sockets (SAE): 3/16", 7/32", 1/4", 9/32", 5/16", 11/32", 3/8", 7/16", 1/2"  
 Deep 6pt. Sockets (SAE): 1/4", 9/32", 5/16", 11/32", 3/8", 7/16", 1/2"  
 Deep 6pt. Sockets (Metric): 6mm, 7mm, 8mm, 9mm, 10mm, 11mm, 12mm

**1/2" DRIVE**  
 Professional Ratchet with Quick Release, 3" Extension and 15" Flexible Handle  
 Standard 12pt. Sockets (SAE): 1/2", 9/16", 5/8", 11/16", 3/4", 13/16", 7/8", 15/16", 1", 1-1/16", 1-1/8", 1-3/16", 1-1/4"  
 Standard 12pt. Sockets (Metric): 10mm, 11mm, 12mm, 13mm, 14mm

**COMBINATION WRENCHES**  
 12pt. Wrenches (SAE): 5/16", 3/8", 7/16", 1/2", 9/16", 5/8", 11/16", 3/4", 13/16", 7/8", 15/16"

**SPECIALTY TOOL**  
 W6 Driver

**3/8" DRIVE**  
 Professional Ratchet with Quick Release, 3" Extension, 10" Spinner Extension Handle and 3/8" F-1/4" M Adapter  
 Standard 6pt. Sockets (SAE): 5/16", 3/8", 7/16", 1/2", 9/16", 5/8", 11/16", 3/4", 13/16", 7/8"  
 Standard 6pt. Sockets (Metric): 9mm, 10mm, 11mm, 12mm, 13mm, 14mm, 15mm, 16mm, 17mm, 18mm, 19mm, 20mm, 21mm, 22mm  
 Standard 12pt. Sockets (SAE): 5/16", 3/8", 7/16", 1/2", 9/16", 5/8", 11/16", 3/4", 13/16", 7/8"  
 Deep 12pt. Sockets (SAE): 3/8", 7/16", 1/2", 9/16", 5/8", 11/16", 3/4", 11/16"  
 Deep 12pt. Sockets (Metric): 10mm, 11mm, 12mm, 13mm, 14mm, 15mm, 16mm, 17mm, 18mm, 19mm  
 Spark Plug Sockets: 5/8", 13/16"  
 Internal Star Sockets: E5, E6, E7, E8, E10, E11, E12, E14, E16, E18, E20  
 Slotted Bit Sockets: 3/16", 1/4", 9/32"  
 Phillips Bit Sockets: #1, #2, #3  
 Star Bit Sockets: T10, T15, T20, T25, T27, T30, T40, T45, T50, T55  
 Hex Bit Sockets: 1/8", 5/32", 3/16", 7/32", 1/4", 5/16", 3/8", 3mm, 4mm, 5mm, 6mm, 7mm, 8mm, 10mm

135-PIECE MECHANICS TOOL SET—1/4", 3/8", AND 1/2" DRIVE



- Quick release ratchet for fast and easy exchange of sockets
- Large, clear size markings
- Durable blow-molded case for compact storage
- Fully polished, chrome finish for easy cleaning
- Meets or exceeds ANSI specifications for wrenches: B107.6
- Tapered designed ratchets for comfortable use

STOCK NUMBER	DESCRIPTION	SHIP WEIGHT (LBS.)	CARTON PACK
36151	135-Piece Mechanics Tool Set (SAE/Metric)	22	1

SET INCLUDES:

**1/4" DRIVE**  
 Professional Ratchet with Quick Release and 3" Extension  
 Standard 6pt. Sockets (SAE): 5/32", 3/16", 7/32", 1/4", 9/32", 5/16", 11/32", 3/8", 7/16", 1/2", 9/16"  
 Standard 6pt. Sockets (Metric): 4mm, 5mm, 6mm, 7mm, 8mm, 9mm, 10mm, 11mm, 12mm, 13mm, 14mm  
 Deep 6pt. Sockets (SAE): 3/16", 7/32", 1/4", 9/32", 5/16", 11/32", 3/8", 7/16", 1/2", 9/16"  
 Deep 6pt. Sockets (Metric): 4mm, 5mm, 6mm, 7mm, 8mm, 9mm, 10mm, 11mm, 12mm, 13mm, 14mm

**3/8" DRIVE**  
 Professional Ratchet with Quick Release and 3" Extension  
 Standard 6pt. Sockets (SAE): 3/8", 7/16", 1/2", 9/16", 5/8", 11/16", 3/4", 13/16", 7/8"  
 Standard 12pt. Sockets (SAE): 3/8", 7/16", 1/2", 9/16", 5/8", 11/16", 3/4", 13/16", 7/8"  
 Standard 12pt. Sockets (Metric): 9mm, 10mm, 11mm, 12mm, 13mm, 14mm, 15mm, 16mm, 17mm, 18mm, 19mm  
 Spark Plug Sockets: 5/8", 13/16"  
 Star Bit Sockets: E5, E6, E7, E8, E10, E11, E12, E14, E16, E18, E20

**1/2" DRIVE**  
 Professional Ratchet with Quick Release  
 Standard 6pt. Sockets (SAE): 7/16", 1/2", 9/16", 5/8", 11/16", 3/4", 13/16", 7/8", 15/16", 1"  
 Standard 6pt. Sockets (Metric): 9mm, 10mm, 11mm, 12mm, 13mm, 14mm, 15mm, 16mm, 17mm, 18mm, 19mm

**DRIVE BITS**  
 Slotted: 3/16", 1/4", 9/32"  
 Phillips: #1, #2, #3  
 Star: T10, T15, T20, T25

**COMBINATION WRENCHES**  
 12pt. Wrenches (SAE): 5/16", 3/8", 7/16", 1/2", 9/16", 5/8", 11/16", 3/4"  
 12pt. Wrenches (Metric): 9mm, 10mm, 12mm, 13mm, 14mm, 15mm

**SPECIALTY TOOLS**  
 W6 Driver and Ratcheting Bit Driver

125-PIECE SOCKET WRENCH SET — 3/8" DRIVE



- Professional quality in design and construction
- Quick release ratchet for fast and easy exchange of sockets
- Large, clear size markings
- Durable blow-molded case for compact storage
- Fully polished, chrome finish for easy cleaning
- Tapered designed ratchets for comfortable use

STOCK NUMBER	DESCRIPTION	SHIP WEIGHT (LBS.)	CARTON PACK
36001	125-Piece Socket Wrench Set (SAE/Metric)	21	1

SET INCLUDES:

**3/8" DRIVE**  
 Professional Ratchet with Quick Release, 10" Flexible Handle, 3", 6" and 10" Extension  
 8" Sliding T-Bar and Universal Joint  
 Standard 6pt. Sockets (SAE): 1/4", 5/16", 3/8", 7/16", 1/2", 9/16", 5/8", 11/16", 3/4", 13/16", 7/8"  
 Standard 12pt. Sockets (SAE): 1/4", 5/16", 3/8", 7/16", 1/2", 9/16", 5/8", 11/16", 3/4", 13/16", 7/8", 15/16"  
 Standard 12pt. Sockets (Metric): 6mm, 7mm, 8mm, 9mm, 10mm, 11mm, 12mm, 13mm, 14mm, 15mm, 16mm, 17mm, 18mm, 19mm, 20mm, 21mm, 22mm  
 Deep 12pt. Sockets (SAE): 3/8", 7/16", 1/2", 9/16", 5/8", 11/16", 3/4", 13/16", 7/8"  
 Deep 12pt. Sockets (Metric): 9mm, 10mm, 11mm, 12mm, 13mm, 14mm, 15mm, 16mm, 17mm, 18mm, 19mm

Standard 8pt. Sockets (SAE): 1/4", 5/16", 3/8", 7/16", 1/2"  
 Spark Plug Sockets: 5/8", 13/16"  
 Internal Star Sockets: E5, E6, E7, E8, E10, E11, E12, E14, E16, E18, E20  
 Slotted Bit Sockets: 3/16", 1/4", 9/32"  
 Phillips Bit Sockets: #1, #2, #3, #4  
 Pozi Bit Sockets: #1, #2, #3, #4  
 Star Bit Sockets: T10, T15, T20, T25, T27, T30, T40, T45, T50  
 Tamper Proof Star Bit Sockets: T10, T15, T20, T25, T30  
 Square Bit Sockets: S1, S2, S3  
 Hex Bit Sockets: 5/32", 3/16", 7/32", 1/4", 5/16", 3/8", 4mm, 5mm, 6mm, 7mm, 8mm, 10mm

80-PIECE SOCKET WRENCH SET — 1/4", 3/8" AND 1/2" DRIVE

- Professional quality in design and construction
- Quick release ratchet for fast and easy exchange of sockets
- Large, clear size markings
- Fully polished, chrome finish for easy cleaning
- Durable blow-molded case for compact storage
- Tapered designed ratchets for comfortable use

STOCK NUMBER	DESCRIPTION	SHIP WEIGHT (LBS.)	CARTON PACK
36000	80-Piece Socket Wrench Set (SAE/Metric)	12	1

SET INCLUDES:

**1/4" DRIVE**  
 Professional Ratchet with Quick Release and 3" Extension  
 Standard 6pt. Sockets (SAE): 5/32", 3/16", 7/32", 1/4", 9/32", 5/16", 11/32", 3/8", 7/16", 1/2"  
 Standard 6pt. Sockets (Metric): 4mm, 4.5mm, 5mm, 5.5mm, 6mm, 7mm, 8mm, 9mm, 10mm, 11mm, 12mm, 13mm  
 Deep 6pt. Sockets (SAE): 3/16", 1/4", 9/32", 5/16"

**1/2" DRIVE**  
 Professional Ratchet with Quick Release and 5" Extension  
 Standard 12pt. Sockets (SAE): 1/2", 9/16", 5/8", 11/16", 3/4", 13/16", 7/8"

**3/8" DRIVE**  
 Professional Ratchet with Quick Release and 3" Extension  
 Standard 6pt. Sockets (SAE): 3/8", 7/16", 1/2", 9/16", 5/8", 11/16", 3/4", 13/16"  
 Standard 6pt. Sockets (Metric): 9mm, 10mm, 11mm, 12mm, 13mm, 14mm, 15mm, 17mm, 19mm  
 Standard 12pt. Sockets (SAE): 3/8", 7/16", 1/2", 9/16", 5/8", 11/16", 3/4", 13/16"  
 Standard 12pt. Sockets (Metric): 9mm, 10mm, 11mm, 12mm, 13mm, 14mm, 15mm, 16mm, 17mm, 19mm  
 Spark Plug Sockets: 5/8", 13/16"  
 Deep 12pt. Sockets (SAE): 3/8", 7/16", 1/2", 9/16"

60-PIECE SOCKET WRENCH SET — 1/4" AND 3/8" DRIVE



- Professional quality in design and construction
- Quick release ratchet for fast and easy exchange of sockets
- Large, clear size markings
- Fully polished, chrome finish for easy cleaning
- Durable blow-molded case for compact storage
- Tapered designed ratchets for comfortable use

STOCK NUMBER	DESCRIPTION	SHIP WEIGHT (LBS.)	CARTON PACK
36011	60-Piece Socket Wrench Set (SAE/Metric)	8	1

SET INCLUDES:

**1/4" DRIVE**  
Professional Ratchet with Quick Release, 3" Extension and 6" Spinner Extension Handle  
Standard 6pt. Sockets (SAE): 3/16", 7/32", 1/4", 9/32", 5/16", 11/32", 3/8", 7/16", 1/2"  
Standard 6pt. Sockets (Metric): 4mm, 4.5mm, 5mm, 5.5mm, 6mm, 7mm, 8mm, 9mm, 10mm, 11mm, 12mm, 13mm  
Deep 6pt. Sockets (SAE): 7/32", 1/4", 9/32", 5/16", 11/32", 3/8"

**3/8" DRIVE**  
Professional Ratchet with Quick Release and 3" Extension  
Standard 8pt. Sockets (SAE): 1/4", 5/16", 3/8"  
Standard 12pt. Sockets (SAE): 3/8", 7/16", 1/2", 9/16", 5/8", 11/16", 3/4", 13/16", 7/8"  
Standard 12pt. Sockets (Metric): 8mm, 9mm, 10mm, 11mm, 12mm, 13mm, 14mm, 15mm, 17mm, 19mm  
Deep 12pt. Sockets (SAE): 3/8", 7/16", 1/2", 9/16", 5/8", 11/16"

51-PIECE SOCKET WRENCH SET-1/4", 3/8" DRIVE



- Professional quality in design and construction
- Quick release ratchet for fast and easy exchange of sockets
- Large, clear size markings
- Fully polished, chrome finish for easy cleaning
- Durable blow-molded case for compact storage
- Tapered designed ratchets for comfortable use

STOCK NUMBER	DESCRIPTION	SHIP WEIGHT (LBS.)	CARTON PACK
36012	51-Piece Socket Wrench Set (SAE/Metric)	7	1

SET INCLUDES:

**1/4" DRIVE**  
3" Extension and 6" Spinner Extension Handle  
Standard 6pt. Sockets (SAE): 3/16", 7/32", 1/4", 9/32", 5/16", 11/32", 3/8", 7/16", 1/2"  
Standard 6pt. Sockets (Metric): 4mm, 4.5mm, 5mm, 5.5mm, 6mm, 7mm, 8mm, 9mm, 10mm, 11mm, 12mm, 13mm

**3/8" DRIVE**  
Professional Ratchet with Quick Release, 3" Extension and 3/8" F - 1/4" M Adapter  
Standard 12pt. Sockets (SAE): 3/8", 7/16", 1/2", 9/16", 5/8", 11/16", 3/4", 13/16", 7/8"  
Standard 12pt. Sockets (Metric): 8mm, 9mm, 10mm, 11mm, 12mm, 13mm, 14mm, 15mm, 17mm, 19mm  
Deep 12pt. Sockets (SAE): 3/8", 7/16", 1/2", 9/16", 5/8", 11/16"

26-PIECE SOCKET WRENCH SET — 1/2" DRIVE



- Professional quality in design and construction
- Quick release ratchet for fast and easy exchange of sockets
- Large, clear size markings
- Fully polished, chrome finish for easy cleaning
- Durable blow-molded case for compact storage
- Tapered designed ratchets for comfortable use

STOCK NUMBER	DESCRIPTION	SHIP WEIGHT (LBS.)	CARTON PACK
36009	26-Piece Socket Wrench Set (SAE/Metric)	11	1

SET INCLUDES:

**1/2" DRIVE**  
Professional Ratchet with Quick Release, 5" Extension, Universal Joint and 16" Speed Handle  
Standard 6pt. Sockets (SAE): 7/16", 1/2", 9/16", 5/8", 11/16", 3/4"  
Standard 12pt. Sockets (SAE): 13/16", 7/8", 15/16", 1", 1-1/16", 1-1/8", 1-1/4"  
Standard 12pt. Sockets (Metric): 14mm, 15mm, 17mm, 19mm, 22mm, 24mm, 27mm, 30mm, 32mm



23-PIECE SOCKET WRENCH SETS — 1/4", 3/8" DRIVE

- Professional quality in design and construction
- Quick release ratchet for fast and easy exchange of sockets
- Large, clear size markings
- Fully polished, chrome finish for easy cleaning
- Durable blow-molded case for compact storage
- Tapered designed ratchets for comfortable use

STOCK NUMBER	DESCRIPTION	SHIP WEIGHT (LBS.)	CARTON PACK
36008	23-Piece Socket Wrench Set (SAE)	4	1
36007	23-Piece Socket Wrench Set (Metric)	4	1

SAE SET INCLUDES:

**1/4" DRIVE**  
6" Spinner Extension Handle  
Standard 6pt. Sockets (SAE): 3/16", 7/32", 1/4", 9/32", 5/16", 11/32", 3/8", 7/16", 1/2"  
**3/8" DRIVE**  
Professional Ratchet with Quick Release, 3" and 6" Extension and 3/8" F - 1/4" M Adapter  
Standard 12pt. Sockets (SAE): 7/16", 1/2", 9/16", 5/8", 11/16", 3/4", 13/16", 7/8"  
Spark Plug Socket: 5/8"



METRIC SET INCLUDES:

**1/4" DRIVE**  
6" Spinner Extension Handle  
Standard 6pt. Sockets (Metric): 5mm, 6mm, 7mm, 8mm, 9mm, 10mm, 11mm, 12mm, 13mm  
**3/8" DRIVE**  
Professional Ratchet with Quick Release, 3" and 6" Extension and 3/8" F - 1/4" M Adapter  
Standard 12pt. Sockets (Metric): 10mm, 12mm, 13mm, 14mm, 15mm, 17mm, 19mm, 22mm  
Spark Plug Socket: 5/8"



21-PIECE SOCKET WRENCH SET — 1/4" DRIVE

- Professional quality in design and construction
- Quick release ratchet for fast and easy exchange of sockets
- Large, clear size markings
- Fully polished, chrome finish for easy cleaning
- Durable blow-molded case for compact storage
- Tapered designed ratchets for comfortable use

STOCK NUMBER	DESCRIPTION	SHIP WEIGHT (LBS.)	CARTON PACK
36006	21-Piece Socket Wrench Set (SAE)	3	1

SET INCLUDES:

**1/4" DRIVE**  
Professional Ratchet with Quick Release, 6" Spinner Extension Handle, 4" Sliding T-Bar, 3" and 6" Extension  
Standard 6pt. Sockets (SAE): 3/16", 7/32", 1/4", 9/32", 5/16", 11/32", 3/8", 7/16", 1/2"  
Deep 6pt. Sockets (SAE): 1/4", 9/32", 5/16", 11/32", 3/8", 7/16", 1/2"



20-PIECE SOCKET WRENCH SETS — 3/8" DRIVE

- Professional quality in design and construction
- Quick release ratchet for fast and easy exchange of sockets
- Large, clear size markings
- Fully polished, chrome finish for easy cleaning
- Durable blow-molded case for compact storage
- Tapered designed ratchets for comfortable use

STOCK NUMBER	DESCRIPTION	SHIP WEIGHT (LBS.)	CARTON PACK
36004	20-Piece Socket Wrench Set (SAE)	5	1
36005	20-Piece Socket Wrench Set (Metric)	5	1

SAE SET INCLUDES:

**3/8" DRIVE**  
Professional Ratchet with Quick Release, 3" and 6" Extension  
Standard 12pt. Sockets (SAE): 3/8", 7/16", 1/2", 9/16", 5/8", 11/16", 3/4", 13/16", 7/8"  
Deep 6pt. Sockets (SAE): 3/8", 7/16", 1/2", 9/16", 5/8", 11/16", 3/4", 13/16"



METRIC SET INCLUDES:

**3/8" DRIVE**  
Professional Ratchet with Quick Release, 3" and 6" Extension  
Standard 6pt. Sockets (Metric): 10mm, 11mm, 12mm, 13mm, 14mm, 15mm, 17mm, 19mm, 22mm  
Deep 6pt. Sockets (Metric): 10mm, 11mm, 12mm, 13mm, 14mm, 15mm, 17mm, 19mm





**17-PIECE SOCKET WRENCH SET-1/2" DRIVE**

- Professional quality in design and construction
- Quick release ratchet for fast and easy exchange of sockets
- Large, clear size markings
- Fully polished, chrome finish for easy cleaning
- Durable blow-molded case for compact storage
- Tapered designed ratchets for comfortable use

STOCK NUMBER	DESCRIPTION	SHIP WEIGHT (LBS.)	CARTON PACK
36003	17-Piece Socket Wrench Set (SAE)	9	1

SET INCLUDES:

**1/2" DRIVE**

Professional Ratchet with Quick Release, 5" Extension and 16" Speed Handle  
Standard 12pt. Sockets (SAE): 3/8", 7/16", 1/2", 9/16", 5/8", 11/16", 3/4", 13/16", 7/8", 15/16", 1", 1-1/16", 1-1/8", 1-1/4"



**12-PIECE SOCKET WRENCH SET — 3/8" DRIVE**



- Professional quality in design and construction
- Quick release ratchet for fast and easy exchange of sockets
- Large, clear size markings
- Fully polished, chrome finish for easy cleaning
- Durable blow-molded case for compact storage
- Tapered designed ratchets for comfortable use

STOCK NUMBER	DESCRIPTION	SHIP WEIGHT (LBS.)	CARTON PACK
36002	12-Piece Socket Wrench Set (SAE)	3	1

SET INCLUDES:

**3/8" DRIVE**

Professional Ratchet with Quick Release and 3" Extension  
Standard 12pt. Sockets (SAE): 3/8", 7/16", 1/2", 9/16", 5/8", 11/16", 3/4", 13/16", 7/8"  
Spark Plug Socket: 5/8"



**32-PIECE COMBINATION WRENCH SET**



- Drop forged steel for strength and durability
- Long length for extra torque
- Professional quality design and construction
- Meets or exceeds ANSI specifications for wrenches: B107.6
- Fully polished, chrome finish for easy cleaning
- Large, clear size markings — both ends, both sides
- Box end designed to grip flats, not fastener points

STOCK NUMBER	DESCRIPTION	SHIP WEIGHT (LBS.)	CARTON PACK
36105	32-Piece Combination Wrench Set (SAE/Metric)	19	1

SET INCLUDES:

12pt. Combination Wrenches (SAE): 1/4", 5/16", 11/32", 3/8", 7/16", 1/2", 9/16", 5/8", 11/16", 3/4", 13/16", 7/8", 15/16", 1", 1-1/16", 1-1/8"  
12pt. Combination Wrenches (Metric): 7mm, 8mm, 9mm, 10mm, 11mm, 12mm, 13mm, 14mm, 15mm, 16mm, 17mm, 18mm, 19mm, 21mm, 22mm, 24mm



**17-PIECE COMBINATION WRENCH SET METRIC**

- Drop forged steel for strength and durability
- Long length for extra torque
- Professional quality design and construction
- Meets or exceeds ANSI specifications for wrenches: B107.6
- Fully polished, chrome finish for easy cleaning
- Large, clear size markings — both ends, both sides
- Box end designed to grip flats, not fastener points

STOCK NUMBER	DESCRIPTION	SHIP WEIGHT (LBS.)	CARTON PACK
36103	17-Piece Combination Wrench Set (Metric)	12	1

METRIC SET INCLUDES:

12pt. Combination Wrenches: 7mm, 8mm, 9mm, 10mm, 11mm, 12mm, 13mm, 14mm, 15mm, 16mm, 17mm, 18mm, 19mm, 21mm, 22mm, 24mm, 27mm



**6-PIECE COMBINATION WRENCH SETS**

- Long length for extra torque
- Drop forged steel for strength and durability
- Professional quality design and construction
- Meets or exceeds ANSI specifications for wrenches: B107.6
- Fully polished, chrome finish for easy cleaning
- Large, clear size markings — both ends, both sides
- Box end designed to grip flats, not fastener points

STOCK NUMBER	DESCRIPTION	SHIP WEIGHT (LBS.)	CARTON PACK
36106	6-Piece Combination Wrench Set (SAE)	11	1
36107	6-Piece Combination Wrench Set (Metric)	12	1

SAE SET INCLUDES:

12pt. Combination Wrenches (SAE): 7/8", 15/16", 1", 1-1/16", 1-1/8", 1-1/4"

METRIC SET INCLUDES:

12pt. Combination Wrenches (Metric): 25mm, 26mm, 27mm, 28mm, 30mm, 32mm



**7-PIECE HEX BIT SOCKET SET (SAE) — 3/8" DRIVE**

- Professional quality in design and construction
- Secured with a press fit into polished chrome sockets

Set includes:

3/8" Drive  
Hex Bit Sockets (SAE): 1/8", 5/32", 3/16", 7/32", 1/4", 5/16", 3/8"

STOCK NUMBER	DESCRIPTION	SHIP WEIGHT (LBS.)	CARTON PACK
36051	7-Piece Hex Bit Socket Set (SAE)	1	6



**6-PIECE HEX BIT SOCKET SET (METRIC) — 3/8" DRIVE**

- Professional quality in design and construction
- Secured with a press fit into polished chrome sockets

Set includes:

3/8" Drive  
Hex Bit Sockets (Metric): 4mm, 5mm, 6mm, 7mm, 8mm, 10mm

STOCK NUMBER	DESCRIPTION	SHIP WEIGHT (LBS.)	CARTON PACK
36053	6-Piece Hex Bit Socket Set (Metric)	1	6





6-PIECE STAR BIT SOCKET SET — 3/8" DRIVE

- Professional quality in design and construction
  - Secured with a press fit into polished chrome sockets
- Set includes:  
3/8" Drive  
Star Bit Sockets: T10, T15, T20, T25, T27, T30

STOCK NUMBER	DESCRIPTION	SHIP WEIGHT (LBS.)	CARTON PACK
36054	6-Piece Star Bit Socket Set	1	6

HEAVY-DUTY RETRACTABLE UTILITY KNIFE



- Easy thumb glide adjusts and locks blade at desired position
- Ten position, fully retractable blade
- Cuts drywall, string, tape, wall covering and most soft materials
- Convenient blade storage in handle
- Includes three replacement blades

STOCK NUMBER	DESCRIPTION	SHIP WEIGHT (LBS.)	CARTON PACK
30850	Heavy-Duty Retractable Utility Knife	4	6

100 UTILITY KNIFE BLADES



- Cuts, scrapes and trims most material
- Fits most standard utility knives

STOCK NUMBER	DESCRIPTION	SHIP WEIGHT (LBS.)	CARTON PACK
30775	100 Utility Knife Blades	4	6

DUCTILE PIPE WRENCHES



- Forged steel upper and lower jaw
- Floating hook jaw with spring suspension for easier gripping

STOCK NUMBER	SIZE (IN.)	PIPE CAPACITY (IN.)	SHIP WEIGHT (LBS.)	CARTON PACK
30550	14	2	30	6
30551	18	2-1/2	12	2
30552	24	3	8	2

ALUMINUM PIPE WRENCHES



- High quality, light weight cast aluminum body
- Jaws are made of hardened alloy steel
- Heavy-duty adjustment ring

STOCK NUMBER	SIZE (IN.)	PIPE CAPACITY (IN.)	SHIP WEIGHT (LBS.)	CARTON PACK
30450	10	1-1/2	10	6
30451	18	2-1/2	13	4
30452	24	3	16	2
30453	36	5	7	1

STEEL ADJUSTABLE WRENCHES

- Unique BlackEdge® finish
- Hardened and tempered steel for strength and durability
- Precision milled steel jaws
- Smooth turning knurl for jaw adjustments
- Graduated scale for quick size reference



STOCK NUMBER	SIZE	JAW CAPACITY	SHIP WEIGHT (LBS.)	CARTON PACK
30400	4	1/2	3	6
30401	6	3/4	3	6
30402	8	15/16	4	6
30403	10	1-1/4	6	6
30404	12	1-1/2	11	6
30405	15	1-3/4	16	6
30406	18	2	9	2
30407	24	2-1/4	8	1

BLACK/EDGE®

STOCK NUMBER	DESCRIPTION	SHIP WEIGHT EACH (LBS.)	CARTON PACK
30425	2-Piece Steel Adjustable Wrench Set	10	6

AVIATION SNIPS

- Hardened alloy steel jaws
- Precision machined cutting edges
- Features powerful compound action
- Meets or exceeds ANSI standards



STOCK NUMBER	DESCRIPTION	SHIP WEIGHT (LBS.)	CARTON PACK
30606	Right Cut (Green)	1	6
30607	Straight Cut (Yellow)	1	6
30608	Left Cut (Red)	1	6
30610	3-Piece Aviation Snips Set	3	3

WIRE STRIPPERS

- Serrated nose prevents slipping and can be used to pull or bend wire
- Comfortable soft grip handles help reduce hand fatigue and prevent slipping
- Hardened and tempered steel for strength and durability
- Added holes for looping wire ends



STOCK NUMBER	DESCRIPTION	SHIP WEIGHT (LBS.)	CARTON PACK
30750	10-22 AWG (Yellow)	2	6
30751	20-30 AWG (Teal)	2	6
30675	2-Piece Set	4	6

LONG NOSE PLIERS

- Designed for holding and reaching in tight areas and bending wire
- Polished finish with unique BlackEdge® resists corrosion
- Comfortable soft grip handles help reduce hand fatigue and prevent slipping
- Joints lubricated for smooth operation
- Hardened and tempered steel for strength and durability



STOCK NUMBER	SIZE (IN.)	SHIP WEIGHT (LBS.)	CARTON PACK
31825	5	2	6
31826	6	3	6
31827	8	4	6

BLACK/EDGE®





**BLACK/EDGE**

**45 DEGREE BENT NOSE PLIERS**

- Designed for reaching around objects
- Polished finish with unique BlackEdge® resists corrosion
- Comfortable soft grip handles help reduce hand fatigue and prevent slipping
- Joints lubricated for smooth operation
- Hardened and tempered steel for strength and durability

STOCK NUMBER	SIZE (IN.)	SHIP WEIGHT (LBS.)	CARTON PACK
31225	6	3	6
31226	8	4	6

**DIAGONAL CUTTING PLIERS**

- Designed for cutting and snipping wire
- Polished finish with unique BlackEdge® resists corrosion
- Comfortable soft grip handles help reduce hand fatigue and prevent slipping
- Joints lubricated for smooth operation
- Hardened and tempered steel for strength and durability

STOCK NUMBER	SIZE (IN.)	SHIP WEIGHT (LBS.)	CARTON PACK
31250	5	2	6
31251	6	3	6
31252	7	4	6

**END NIPPER PLIERS**

- Designed for cutting close to surface on wire, rivets and screws
- Polished finish with unique BlackEdge® resists corrosion
- Comfortable soft grip handles help reduce hand fatigue and prevent slipping
- Joints lubricated for smooth operation
- Hardened and tempered steel for strength and durability

STOCK NUMBER	SIZE (IN.)	SHIP WEIGHT (LBS.)	CARTON PACK
31275	6	4	6

**LINESMAN PLIERS**

- Designed for gripping and cutting heavy gauge wire
- Polished finish with unique BlackEdge® resists corrosion
- Comfortable soft grip handles help reduce hand fatigue and prevent slipping
- Joints lubricated for smooth operation
- Hardened and tempered steel for strength and durability

STOCK NUMBER	SIZE (IN.)	SHIP WEIGHT (LBS.)	CARTON PACK
31300	6	3	6
31301	7	4	6
31302	8	6	6



**BLACK/EDGE**

**SLIP JOINT PLIERS**

- Designed for gripping and turning round stock
- Polished finish with unique BlackEdge® resists corrosion
- Comfortable soft grip handles help reduce hand fatigue and prevent slipping
- Joints lubricated for smooth operation
- Hardened and tempered steel for strength and durability

STOCK NUMBER	SIZE (IN.)	SHIP WEIGHT (LBS.)	CARTON PACK
31375	6	3	6
31376	8	4	6

**LONG REACH PLIERS**

- Designed for holding and reaching in tight areas, bending and cutting wire
- Polished finish with unique BlackEdge® resists corrosion
- Comfortable soft grip handles help reduce hand fatigue and prevent slipping
- Joints lubricated for smooth operation
- Hardened and tempered steel for strength and durability

STOCK NUMBER	DESCRIPTION	SIZE (IN.)	SHIP WEIGHT (LBS.)	CARTON PACK
31850	Straight	11	9	6
31851	20 Degree	11	9	6
31852	45 Degree	11	9	6
31853	90 Degree	11	9	6

**3-PIECE LONG REACH PLIERS SET**

- Designed for holding and reaching in tight areas, bending and cutting wire
- Polished finish with unique BlackEdge® resists corrosion
- Comfortable soft grip handles help reduce hand fatigue and prevent slipping
- Joints lubricated for smooth operation
- Hardened and tempered steel for strength and durability

STOCK NUMBER	DESCRIPTION	SHIP WEIGHT (LBS.)	CARTON PACK
31352	3-Piece Long Reach Pliers Set	14	6

SET INCLUDES:  
11" Straight, 11" 45° and 11" 90° Pliers

**3-PIECE SOLID JOINT PLIERS SET**

- Polished finish with unique BlackEdge® resists corrosion
- Comfortable soft grip handles help reduce hand fatigue and prevent slipping
- Joints lubricated for smooth operation
- Hardened and tempered steel for strength and durability

STOCK NUMBER	DESCRIPTION	SHIP WEIGHT (LBS.)	CARTON PACK
31351	3-Piece Solid Joint Pliers Set	13	6

SET INCLUDES:  
8" Linesman, 8" Long Nose and 7-1/2" Diagonal Cutting Pliers



**BLACK/EDGE**



**BLACK/EDGE**



**BLACK/EDGE**



**BLACK/EDGE**



**BLACK/EDGE**

**TONGUE AND GROOVE PLIERS**

- Designed for gripping and turning round stock and odd shaped objects with precision machined jaws
- Polished finish with unique BlackEdge® resists corrosion
- Comfortable soft grip handles help reduce hand fatigue and prevent slipping
- Joints lubricated for smooth operation
- Hardened and tempered steel for strength and durability

STOCK NUMBER	SIZE (IN.)	JAW CAPACITY (IN.)	SHIP WEIGHT (LBS.)	CARTON PACK
31426	10	1-3/16	6	6
31427	12	1-5/8	11	6
31428	14	1-5/8	13	6
31425	16	2-3/4	19	6

**2-PIECE TONGUE AND GROOVE PLIERS SET**

- Designed for gripping and turning round stock and odd shaped objects with precision machined jaws
- Polished finish with unique BlackEdge® resists corrosion
- Comfortable soft grip handles help reduce hand fatigue and prevent slipping
- Joints lubricated for smooth operation
- Hardened and tempered steel for strength and durability



**BLACK/EDGE**

STOCK NUMBER	DESCRIPTION	SHIP WEIGHT (LBS.)	CARTON PACK
31350	2-Piece Tongue and Groove Pliers Set	14	6

SET INCLUDES:  
10" and 12" Tongue and Groove Pliers

**PRECISION LONG NOSE PLIERS**

- Designed for holding and reaching in tight areas and bending wire
- Polished finish with unique BlackEdge® resists corrosion
- Comfortable soft grip handles help reduce hand fatigue and prevent slipping



**BLACK/EDGE**

STOCK NUMBER	DESCRIPTION	SHIP WEIGHT (LBS.)	CARTON PACK
31325	Precision Long Nose Pliers	2	6

**PRECISION DIAGONAL CUTTING PLIERS**

- Designed for cutting and snipping wire diagonally
- Polished finish with unique BlackEdge® resists corrosion
- Comfortable soft grip handles help reduce hand fatigue and prevent slipping



**BLACK/EDGE**

STOCK NUMBER	DESCRIPTION	SHIP WEIGHT (LBS.)	CARTON PACK
31326	Precision Diagonal Cutting Pliers	2	6

**PRECISION END NIPPER PLIERS**

- Designed for sharp, clean cuts close to surface on wire, rivets and screws
- Polished finish with unique BlackEdge® resists corrosion
- Comfortable soft grip handles help reduce hand fatigue and prevent slipping



**BLACK/EDGE**

STOCK NUMBER	DESCRIPTION	SHIP WEIGHT (LBS.)	CARTON PACK
31327	Precision End Nipper Pliers	2	6

**PRECISION 45 DEGREE BENT NOSE PLIERS**

- Designed for reaching around objects
- Polished finish with unique BlackEdge® resists corrosion
- Comfortable soft grip handles help reduce hand fatigue and prevent slipping

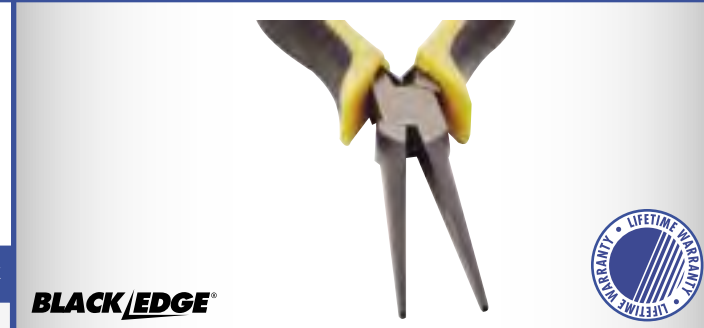


**BLACK/EDGE**

STOCK NUMBER	DESCRIPTION	SHIP WEIGHT (LBS.)	CARTON PACK
31328	Precision 45° Bent Nose Pliers	2	6

**PRECISION NEEDLE NOSE PLIERS**

- Designed for longer reach and holding in tight areas
- Polished finish with unique BlackEdge® resists corrosion
- Comfortable soft grip handles help reduce hand fatigue and prevent slipping



**BLACK/EDGE**

STOCK NUMBER	DESCRIPTION	SHIP WEIGHT (LBS.)	CARTON PACK
31329	Precision Needle Nose Pliers	2	6

**PRECISION ROUND NOSE PLIERS**

- Designed for grasping and looping wire
- Polished finish with unique BlackEdge® resists corrosion
- Comfortable soft grip handles help reduce hand fatigue and prevent slipping



**BLACK/EDGE**

STOCK NUMBER	DESCRIPTION	SHIP WEIGHT (LBS.)	CARTON PACK
31330	Precision Round Nose Pliers	2	6

**PRECISION FLAT NOSE PLIERS**

- Designed for grasping and bending light gauge metal and wire
- Polished finish with unique BlackEdge® resists corrosion
- Comfortable soft grip handles help reduce hand fatigue and prevent slipping



**BLACK/EDGE**

STOCK NUMBER	DESCRIPTION	SHIP WEIGHT (LBS.)	CARTON PACK
31331	Precision Flat Nose Pliers	2	6

**PRECISION LINESMAN PLIERS**

- Designed for cutting wire, grasping and bending light gauge metal and wire
- Polished finish with unique BlackEdge® resists corrosion
- Comfortable soft grip handles help reduce hand fatigue and prevent slipping



**BLACK/EDGE**

STOCK NUMBER	DESCRIPTION	SHIP WEIGHT (LBS.)	CARTON PACK
31332	Precision Linesman Pliers	2	6





**BLACK/EDGE**

**5-PIECE PRECISION MINI PLIERS SET**

- Polished finish with unique BlackEdge® resists corrosion
- Comfortable soft grip handles help reduce hand fatigue and prevent slipping
- Comes with an easy to carry, genuine leather case to hold and store pliers securely

STOCK NUMBER	DESCRIPTION	SHIP WEIGHT (LBS.)	CARTON PACK
31333	5-Piece Precision Mini Pliers Set	11	6

**SET INCLUDES:**

Long Nose, Bent Nose, Needle Nose, End Nipper and Diagonal Cutting Pliers

**8-PIECE PRECISION MINI PLIERS SET**

- Polished finish with unique BlackEdge® resists corrosion
- Comfortable soft grip handles help reduce hand fatigue and prevent slipping
- Comes with an easy to carry, genuine leather case to hold and store pliers securely



**BLACK/EDGE**

STOCK NUMBER	DESCRIPTION	SHIP WEIGHT (LBS.)	CARTON PACK
31334	8-Piece Precision Mini Pliers Set	15	6

**SET INCLUDES:**

Long Nose, Bent Nose, Needle Nose, Flat Nose, Round Nose, Linesman, End Nipper and Diagonal Cutting Pliers

**77-PIECE FLEX HANDLE SOCKET AND BIT SET**

- Ratcheting flex head rotates in both right and left directions every 15°
- Reversing collar quickly reverses direction
- Locking button secures flex head in the desired position
- Magnetized screwdriver holds bits securely
- Durable bits for tough jobs
- Hollow handle driver for bit storage
- Bits can also be used with power drills and drivers



STOCK NUMBER	DESCRIPTION	SHIP WEIGHT (LBS.)	CARTON PACK
31650	77-Piece Flex Handle Socket and Bit Set	13	1

**SET INCLUDES:**

Magnetic Flex Head Ratcheting Driver, Magnetic Bit Holder, Socket Adapter, (2 Each) Socket Racks, (10 Each) Insert Bit Holders and Storage Case

**1/4" DRIVE SOCKETS**

SAE: 3/16", 1/4", 5/16", 11/32", 3/8", 7/16"  
Metric: 6mm, 7mm, 8mm, 10mm, 11mm, 12mm

**BITS**

Slotted: 1/8", 5/32", 3/16", 7/32", 1/4", 9/32", 3mm, 4mm, 5mm, 6mm Phillips: #0, #1, (7 Each) #2, #3 Star: T10, (2 Each) T15, (2 Each) T20, T25, T27, T30, T40 Poz: #0, #1, (2 Each) #2, #3 Hex: 3/32" 1/8", 5/32", 3/16", 7/32", 2.5mm, 3mm, 4mm, 5mm, 6mm Square End: #0, #1, (2 Each) #2, #3

**UNBREAKABLE HANDLE SLEDGE HAMMERS**

- Unbreakable handle is made with tempered steel, and surrounded by heavy-duty molded rubber
- Ergonomic handle absorbs shock, ensures comfort and has a slip-resistant grip
- High-visibility head adds instant identification under any job site conditions; encourages safe work habits
- Not to be used to strike any object harder than 46HRC



STOCK NUMBER	MODEL	HEAD WEIGHT (LBS.)	HANDLE LENGTH (IN.)	SHIP WEIGHT (LBS.)	CARTON PACK
19999	HVS 212	2-1/2	12	4	1
20000	HVS 412	4	12	6	1
20006	HVS 416	4	16	7	1
20010	HVS 624	6	24	9	1
20015	HVS 630	6	30	10	1
20001	HVS 824	8	24	12	1
20002	HVS 830	8	30	13	1
20020	HVS 1030	10	30	15	1
20025	HVS 1230	12	30	17	1
20003	HVS 1430	14	30	19	1

**UNBREAKABLE HANDLE BALL PEIN HAMMERS**

- Unbreakable handle is made with tempered steel, and surrounded by heavy-duty molded rubber
- Ergonomic handle absorbs shock, ensures comfort and has a slip-resistant grip
- High-visibility head adds instant identification under any job site conditions; encourages safe work habits



STOCK NUMBER	MODEL	HEAD WEIGHT (OZ.)	HANDLE LENGTH (IN.)	SHIP WEIGHT (LBS.)	CARTON PACK
20030	HVB 2414	24	14	3	1
20035	HVB 3214	32	14	4	1
20040	HVB 4014	40	14	5	1

**UNBREAKABLE HANDLE CLAY PICK**

- Unbreakable handle is made with tempered steel, and is surrounded by heavy-duty molded rubber
- Ergonomic handle absorbs shock, ensures comfort and has a slip-resistant grip
- High-visibility head adds instant identification under



STOCK NUMBER	MODEL	HEAD WEIGHT (LBS.)	HANDLE LENGTH (IN.)	SHIP WEIGHT (LBS.)	CARTON PACK
20045	HVP734	7	34	14	1

UNBREAKABLE HANDLE COPPER HEAD SLEDGE HAMMER



- Unbreakable handle is made with tempered steel, and surrounded by heavy-duty molded rubber
- Ergonomic handle absorbs shock, ensures comfort and has a slip-resistant grip
- Copper head prevents sparking and eliminates marring of most struck surfaces

STOCK NUMBER	MODEL	HEAD WEIGHT (LBS.)	HANDLE LENGTH (IN.)	SHIP WEIGHT (LBS.)	CARTON PACK
20060	HVCS412	4	12	5	1

UNBREAKABLE HANDLE CROSS PEIN HAMMERS



- Unbreakable handle is made with tempered steel, and surrounded by heavy-duty molded rubber
- Ergonomic handle absorbs shock, ensures comfort and has a slip-resistant grip
- High-visibility head adds instant identification under any job site conditions; encourages safe work habits

STOCK NUMBER	MODEL	HEAD WEIGHT (LBS.)	HANDLE LENGTH (IN.)	SHIP WEIGHT (LBS.)	CARTON PACK
11302	HVCP216	2	16	3	1
11306	HVCP316	3	16	4	1

UNBREAKABLE HANDLE SOFT FACE HAMMERS



- Handles are made from high strength, chemical resistant rubber, vulcanized over a spring steel rod
- Cushioned grip minimizes shock, vibration and reduces fatigue
- Replaceable faces have large diameter threads
- Each hammer comes with one nylon and one copper replaceable face
- Faces are also available in nylon, aluminum, rubber and copper
- Unbreakable handle will withstand thousands of overstrikes

STOCK NUMBER	MODEL	HEAD DIAMETER (IN.)	HANDLE LENGTH (IN.)	SHIP WEIGHT (LBS.)	CARTON PACK
11025	HVSF125	1-1/4	12	3	1
11050	HVSF150	1-1/2	12	3	1
11075	HVSF175	1-3/4	12	3	1

REPLACEMENT SOFT FACES

STOCK NUMBER	FACE DIAMETER (IN.)	FACE MATERIAL	SHIP WEIGHT (LBS.)	CARTON PACK
12025	1-1/4	Aluminum	1	1
14025	1-1/4	Copper	1	1
15025	1-1/4	Hard Nylon	1	1
16025	1-1/4	Soft Nylon	1	1
17025	1-1/4	Rubber	1	1
12050	1-1/2	Aluminum	1	1
14050	1-1/2	Copper	1	1
15050	1-1/2	Hard Nylon	1	1
16050	1-1/2	Soft Nylon	1	1
17050	1-1/2	Rubber	1	1
12075	1-3/4	Aluminum	1	1
14075	1-3/4	Copper	1	1
15075	1-3/4	Hard Nylon	1	1
16075	1-3/4	Soft Nylon	1	1
17075	1-3/4	Rubber	1	1

ALUMINUM SHAFT PINCH AND DIAMOND POINT BARS

- Light-weight aluminum hex shaft for reduced operator fatigue
- Forged steel pinch and diamond point tips for strength and durability
- Ideal for prying and picking in overhead and side applications where a solid steel bar would be too heavy for extended use



STOCK NUMBER	MODEL	BAR DIAMETER (IN.)	BAR LENGTH (IN.)	SHIP WEIGHT (LBS.)	CARTON PACK
02724	HVPB48	1-5/16	48	7	1
02725	HVPB60	1-5/16	60	8	1
02726	HVPB72	1-5/16	72	9	1

SPALLING HAMMER

- High carbon steel. Heat treated. Machine, polished, beveled striking faces. Top grade handle.
- This is a stone mason's tool
- Hammer is designed for cutting and shaping stone and concrete
- NEVER use this tool for striking metal



STOCK NUMBER	EYE SIZE (IN.)	TOOL LENGTH (IN.)	FACE (IN.)	HANDLE LENGTH (IN.)	HEAD WEIGHT (LBS.)	SHIP WEIGHT (LBS.)	CARTON PACK
00604	3/4 x 1	6-1/4	1-1/4 x 1-7/8	16	4	4.6	5

BACKING OUT CARBON PUNCHES

- High carbon steel



STOCK NUMBER	EYE SIZE (IN.)	TOOL LENGTH (IN.)	PUNCH (IN.)	HANDLE LENGTH (IN.)	HEAD WEIGHT (LBS.)	SHIP WEIGHT (LBS.)	CARTON PACK
05702	3/4 x 1	7-1/2	1/2	16	2	2	1
05704	3/4 x 1	7-3/4	5/8	16	2-1/4	3	1
05706	3/4 x 1	8	3/4	16	2-1/2	3	1
05708	3/4 x 1	8-1/4	7/8	16	3	3	1
05710	3/4 x 1	8-1/2	1	16	3-1/4	4	1

DOUBLE FACE SLEDGES AND BLACKSMITH'S OR ENGINEER'S HAMMERS

- High carbon steel, heat treated
- Machined, polished faces
- Top grade handle



STOCK NUMBER	EYE SIZE (IN.)	TOOL LENGTH (IN.)	FACE (IN.)	HANDLE LENGTH (IN.)	HEAD WEIGHT (LBS.)	SHIP WEIGHT (LBS.)	CARTON PACK
<b>HEADS AND HANDLES</b>							
01102	7/8 x 1-1/4	4-3/8	1-1/4	16	2	4-1/2	4
01104	3/4 x 1	4-3/8	1-3/8	16	2-1/2	4	4
01106	1 x 1-1/4	5	1-1/2	16	3	6	4
01108	3/4 x 1	5-1/2	1-1/2	16	4	5-1/4	4
01110	3/4 x 1	5-1/2	1-1/2	32	4	5-1/2	4
01112	1 x 1-3/8	5	2	36	6	7	4
01114	1 x 1-3/8	6-1/4	2	36	8	9	2
01116	1 x 1-3/8	2-1/8	2-1/8	36	10	11	2
01118	1 x 1-3/8	7-3/8	2-1/8	36	12	13	1
01120	1 x 1-3/8	8-1/8	2-3/8	36	16	17	1
01122	1-1/4 x 1-1/2	9-5/8	2-3/8	36	20	22	1





**CROSS PEIN SLEDGES**

- Heavy-duty hammers designed for blacksmith's use in striking metal
- Striking face is crowned with beveled edge
- Striking face designed for general blacksmith work in striking unhardened metal
- Peins are used for shaping (fullering) and bending unhardened metal
- NEVER use a sledge to strike a hammer, sledge or maul

STOCK NUMBER	#2 EYE SIZE (IN.)	TOOL LENGTH (IN.)	FACE (IN.)	HANDLE LENGTH (IN.)	HEAD WEIGHT (LBS.)	SHIP WEIGHT (LBS.)	CARTON PACK
01302	3/4 x 1	4-1/2	1-3/8	16	2	3	6
01306	3/4 x 1	5	1-5/8	16	3	4	6
01307	3/4 x 1	7	2-1/4	36	4	5	4

**HAMMERS**



- Heavy, short handled hammers, made in slightly varying configurations
- Double faced head is crowned with beveled striking faces
- Designed for use with chisels, punches, star drills and hardened nails, permitting heavy blows with a limited swing-especially advantageous in restricted working areas
- NEVER use these tools for sledging or stone work

STOCK NUMBER	#2 EYE SIZE (IN.)	TOOL LENGTH (IN.)	FACE	HANDLE LENGTH (IN.)	HEAD WEIGHT (LBS.)	SHIP WEIGHT (LBS.)	CARTON PACK
01004	3/4 x 1	4	1-1/2	10-1/2	3	3-1/2	6
01006	3/4 x 1	4-1/2	1-5/8	10-1/2	4	4-1/2	4

**SQUARE HEAD WEDGES**



- Always use a woodchopper's maul or an axe to make a starting notch
- Wedges should be struck with a sledge or woodchopper's maul having a larger striking face than the struck face of the wedge
- High carbon steel

STOCK NUMBER	APPROX. LENGTH (IN.)	APPROX. HEAD (IN.)	BIT SIZE (IN.)	SHIP WEIGHT (LBS.)	CARTON PACK
03601	8	1-1/2	1-3/4	3-1/4	6
03603	9-1/2	1-3/4	2	5-1/4	6

**WEDGE POINT CROWBARS**



- Used to pry and move heavy objects
- High carbon steel
- Smooth taper, roll forged

STOCK NUMBER	STOCK (IN.)	LENGTH (IN.)	SHIP WEIGHT (LBS.)	CARTON PACK
02001	1	48	10	4
02002	1-1/8	51	12	4
02005	1-1/4	60	18	4
02007	1-1/2	66	26	1

**PINCH POINT CROWBARS**

- Used to pry and move heavy objects
- High carbon steel
- Smooth taper, roll forged



STOCK NUMBER	STOCK (IN.)	LENGTH (IN.)	SHIP WEIGHT (LBS.)	CARTON PACK
02101	1	36	6	2
02102	1	48	10	2
02103	1-1/8	51	12	2
02106	1-1/4	60	18	2
02107	1-3/8	64	22	1
02108	1-1/2	66	26	1

**CARPENTER'S WRECKING BARS**

- High carbon hex steel



STOCK NUMBER	STOCK (IN.)	LENGTH (IN.)	SHIP WEIGHT (LBS.)	CARTON PACK
02801	1/2	12	3/4	5
02802	5/8	18	2	5
02803	3/4	24	3-1/2	5
02804	3/4	30	4	5
02805	3/4	36	5	5
02806	7/8	36	8	2
02807	1	48	13	2

**TAMPER TOP POST HOLE DIGGER**

- Used for digging post holes and tamping earth
- One piece, high carbon steel



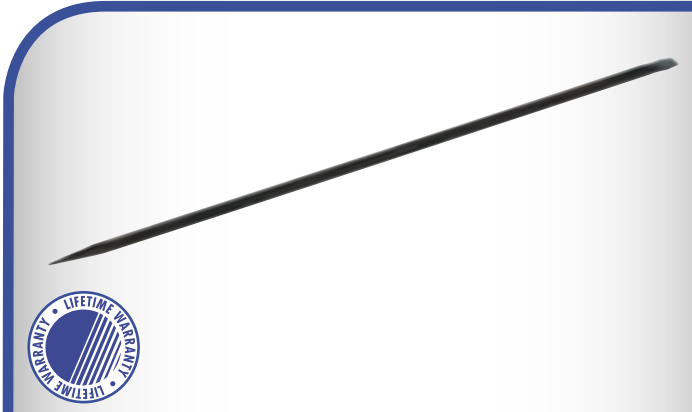
STOCK NUMBER	STOCK (IN.)	LENGTH (IN.)	SHIP WT. (LBS.)	CARTON PACK
02701	1	69	17	1

**SLATE BARS**

- Used by road crews and railroad gangs for lifting or breaking rocks
- High carbon hex steel



STOCK NUMBER	STOCK (IN.)	LENGTH (IN.)	CHISEL WIDTH (IN.)	SHIP WEIGHT (LBS.)	CARTON PACK
02602	1	48	1-1/8	11	4
02603	1	54	1-1/8	12	4
02604	1	60	1-1/8	14	4



**SAN ANGELO BARS**

- Used for digging in soft soils
- High carbon hex steel

STOCK NUMBER	STOCK (IN.)	LENGTH (IN.)	CHISEL WIDTH (IN.)	SHIP WEIGHT (LBS.)
02609	1	72	1-3/4	17
02610	1	84	1-3/4	20



**PRY BARS**

- Used to line up holes and for prying work, such as tightening generators in auto repair work, etc.
- Made from tapered high carbon, hexagonal steel
- Hot forged and heat treated

STOCK NUMBER	STOCK (IN.)	LENGTH (IN.)	SHIP WEIGHT (LBS.)	CARTON PACK
02708	5/8	18	3-1/2	6
02709	3/4	24	6-1/4	6



**OFFSET PINCH BARS**

- High carbon steel
- Meets GSA specifications

STOCK NUMBER	STOCK (IN.)	LENGTH (IN.)	SHIP WEIGHT (LBS.)	CARTON PACK
02710	3/4	26	3-1/2	5
02711	7/8	30	6	5
02712	1	36	8-1/4	5



**ROLL-HEAD PRY BARS**

- Forged from top quality steel and heat treated to resist breaking or bending.

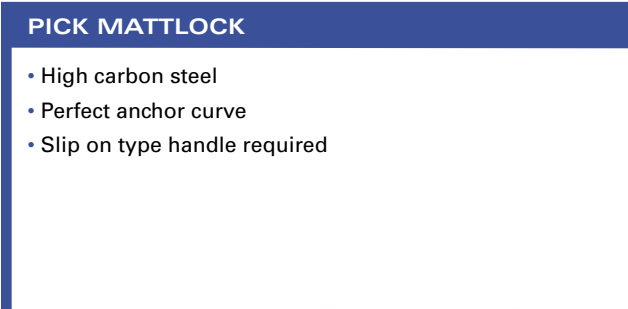
STOCK NUMBER	STOCK (IN.)	LENGTH (IN.)	SHIP WEIGHT (LBS.)	CARTON PACK
04216	5/8	16	1-1/2	5
04218	3/4	18	2-1/2	5



**DOUBLE POINT PICK**

- High carbon steel
- Perfect anchor curve
- Slip-on type handle required

STOCK NUMBER	EYE NO.	TOOL LENGTH (IN.)	SHIP WEIGHT (LBS.)	CARTON PACK
<b>HEAD ONLY</b>				
00106	6	25	7	6



**PICK MATTLOCK**

- High carbon steel
- Perfect anchor curve
- Slip on type handle required



STOCK NUMBER	EYE NO.	TOOL LENGTH (IN.)	BLADE SIZE (IN.)	POINT LENGTH (IN.)	SHIP WEIGHT (LBS.)	CARTON PACK
00301	6	19	3-1/2 x 8	8	5	6

**CAPE CHISELS**

Cutting in locations such as grooves, key ways and slots.



STOCK NUMBER	CUTTING EDGE (IN.)	STOCK SIZE (IN.)	OVERALL LENGTH (IN.)	SHIP WEIGHT (LBS.)	CARTON PACK
22701	1/8	5/16	5-1/2	1.3	12
22703	1/4	3/8	5-1/2	2.5	12
22704	5/16	1/2	6-1/4	3.8	12
22706	1/2	3/4	8	5	6

**HALF ROUND CHISELS**

Cutting round or semi-circular grooves and for chipping inside



STOCK NUMBER	CUTTING EDGE (IN.)	STOCK SIZE (IN.)	OVERALL LENGTH (IN.)	SHIP WEIGHT (LBS.)	CARTON PACK
22801	1/8	5/16	5-1/2	1.5	12
22802	3/16	3/8	5-1/2	2	12
22804	5/16	1/2	6-1/4	3.8	12
22805	3/8	5/8	7	3	6
22806	1/2	3/4	8	5	6

**DIAMOND POINT CHISELS**

Cutting V-grooves, inside corners and square holes.



STOCK NUMBER	CUTTING EDGE (IN.)	STOCK SIZE (IN.)	OVERALL LENGTH (IN.)	SHIP WEIGHT (LBS.)	CARTON PACK
22902	3/16	3/8	5-1/2	2.3	12
22903	1/4	3/8	5-3/4	2.3	12
22905	3/8	5/8	7	3.5	6
22906	1/2	3/4	7	4.8	6





COLD CHISELS

- For cutting, shaping and removing metal softer than the cutting edge itself — for example, metals such as cast iron, wrought iron, steel, bronze and copper

STOCK NUMBER	CUTTING EDGE (IN.)	STOCK SIZE (IN.)	OVERALL LENGTH (IN.)	SHIP WEIGHT (LBS.)	CARTON PACK
32501	1/4	1/4	5	1	5
32502	5/16	1/4	5	1	5
32503	3/8	5/16	5-1/2	1	5
32504	1/2	7/16	6	1	5
32505	5/8	1/2	6-1/2	1	5
32506	3/4	5/8	7	1	5
32507	7/8	3/4	7-1/2	1	5
32508	1	7/8	8	2	5

EXTRA LONG COLD CHISELS



- Same outstanding features as cold chisels but with extra long overall length

STOCK NUMBER	CUTTING EDGE (IN.)	STOCK SIZE (IN.)	OVERALL LENGTH (IN.)	SHIP WEIGHT (LBS.)	CARTON PACK
32602	1/2	7/16	12	1	5
32603	5/8	1/2	12	1	5
32604	3/4	5/8	12	2	5
32605	7/8	3/4	12	2	5
32606	1	3/4	12	2	5
32607	3/4	5/8	18	2	5
32608	1	3/4	18	4	5

FLOOR CHISELS



- Blade is tempered to cut nails
- Allows cutting tongues off floor board and lifting them without marring the surface

STOCK NUMBER	CUTTING EDGE (IN.)	STOCK SIZE (IN.)	OVERALL LENGTH (IN.)	SHIP WEIGHT (LBS.)	CARTON PACK
33601	2-1/2	5/8	11	1	5
33602	3	3/4	12	1	5

CARBON STEEL BRICK CHISELS



- Made from EN-9 steel
- For scoring and trimming concrete blocks and masonry bricks

STOCK NUMBER	MODEL	CUTTING EDGE (IN.)	STOCK SIZE (IN.)	OVERALL LENGTH (IN.)	SHIP WEIGHT (LBS.)	CARTON PACK
00308	BRC/60	2-3/8	5/8	9	1	6
00309	BRC/75	3	7/8	9	2	6
00310	BRC/100	4	1-1/8	9	2	6

CENTER PUNCHES

- Marking work by indentation for starting drills in metal and other materials



STOCK NUMBER	POINT EDGE (IN.)	STOCK SIZE (IN.)	OVERALL LENGTH (IN.)	SHIP WEIGHT (LBS.)	CARTON PACK
34101	5/64	1/4	3-1/2	1	5
34102	1/8	5/16	4-1/4	1	5
34103	5/32	3/8	5	1	5
34104	1/4	1/2	6	1	5
34105	3/8	5/8	6-1/4	1	5

KNURLED CENTER PUNCHES-ROUND HEAD

- Marking work by indentation for starting drills in metal and other materials
- Made from hardened and tempered carbon steel
- Cupped punch surface provides non-slip nail contact



STOCK NUMBER	MODEL	POINT EDGE (IN.)	OVERALL LENGTH (IN.)	SHIP WEIGHT (LBS.)	CARTON PACK
00315	CP/1-16	1/16	4	1	5
00316	CP/5-64	5/64	4	1	5
00317	CP/3-32	3/32	4	1	5
00318	CP/1-8	1/8	4	1	5
00319	CP/5-32	5/32	4	1	5
00320	CP/3-16	3/16	4	1	5
00321	CP/1-4	1/4	4	1	5

KNURLED CENTER PUNCHES-SQUARE HEAD

- Marking work by indentation for starting drills in metal and other materials
- Made from hardened and tempered carbon steel



STOCK NUMBER	MODEL	POINT EDGE (IN.)	OVERALL LENGTH (IN.)	SHIP WEIGHT (LBS.)	CARTON PACK
00323	CP/SQ/1-16	1/16	4	1	10
00324	CP/SQ/3-32	3/32	4	1	10
00325	CP/SQ/1-8	1/8	4	1	10
00326	CP/SQ/5-32	5/32	4	1	10
00327	CP/SQ/3-16	3/16	4	1	10
00328	CP/SQ/1-4	1/4	4	1	10
00329	CP/SQ/3-16L	3/16	4	1	10



**PIN PUNCHES**

- Driving and removing such things as pins and keys after initial movement by a starting punch

STOCK NUMBER	POINT EDGE (IN.)	STOCK SIZE (IN.)	PIN LENGTH (IN.)	OVERALL LENGTH (IN.)	SHIP WEIGHT (LBS.)	CARTON PACK
34501	1/16	1/4	3/4	4	1	5
34502	3/32	5/16	1	4-1/2	1	5
34503	1/8	5/16	1	4-3/4	1	5
34504	5/32	5/16	1	5	1	5
34505	3/16	3/8	1-1/8	5-1/4	1	5
34506	7/32	3/8	1-1/4	5-1/2	1	5
34507	1/4	3/8	1-1/4	5-3/4	1	5
34508	5/16	7/16	1-3/8	6	1	5
34509	3/8	1/2	1-1/2	6-1/2	1	5

**EXTRA LONG PIN PUNCHES**

- Same as standard pin punch where extra length is needed



STOCK NUMBER	POINT EDGE (IN.)	STOCK SIZE (IN.)	PIN LENGTH (IN.)	OVERALL LENGTH (IN.)	SHIP WEIGHT (LBS.)	CARTON PACK
34701	1/8	5/16	3-1/2	8	1	5
34702	3/16	3/8	3-1/2	8	1	5
34703	1/4	3/8	3-1/2	8	1	5
34704	5/16	7/16	3-1/2	8	1	5
34705	3/8	1/2	3-1/2	8	1	5

**SOLID OR STARTING PUNCHES**

- Aligning and sizing holes in light gauge metal and other materials



STOCK NUMBER	POINT EDGE (IN.)	STOCK SIZE (IN.)	TAPER (IN.)	OVERALL LENGTH (IN.)	SHIP WEIGHT (LBS.)	CARTON PACK
34000	3/32	3/8	1-3/4	5	1	5
34001	1/16	3/8	1-3/4	5	1	5
34002	1/8	3/8	1-3/4	5	1	5
34003	5/32	3/8	2-1/4	5	1	5
34004	3/16	3/8	2-1/4	5	1	5
34005	1/4	3/8	2-1/8	5	1	5
34006	5/16	1/2	2	6	1	5
34007	3/8	5/8	2-1/4	6-1/2	1	5
34008	1/2	5/8	2-1/2	7	1	5



**LINING UP/DRIFT PIN PUNCHES**

- Aligning and sizing holes in light gauge metal and other materials

STOCK NUMBER	POINT EDGE (IN.)	STOCK SIZE (IN.)	TAPER (IN.)	OVERALL LENGTH	SHIP WEIGHT (LBS.)	CARTON PACK
34351	1/8	5/16	3-1/2	8	1	5
34352	5/32	3/8	4-1/4	9	1	5
34353	3/16	1/2	6-1/2	10	1	5
34354	1/4	5/8	7-1/2	12	1	5
34355	5/16	3/4	7-1/2	12	2	5
34356	3/8	3/4	8	15	2	5
34357	1/2	7/8	9-1/2	18	2	5
34358	3/32	5/16	3-1/2	8	1	5

**KNURLED DRIVE PIN PUNCHES-4" LENGTH**

- Driving and removing such things as pins and keys after initial movement by a starting punch
- Made from Tool Steel and uniformly heat treated



STOCK NUMBER	MODEL	POINT EDGE (IN.)	SHIP WEIGHT (LBS.)	CARTON PACK
00330	PP/1-16	1/16	1	10
00331	PP/3-32	3/32	1	10
00332	PP/1-8	1/8	1	10
00333	PP/5-32	5/32	1	10
00334	PP/3-16	3/16	1	10
00335	PP/7-32	7/32	1	10
00336	PP/1-4	1/4	1	10
00337	PP/5-16	5/16	1	10

**KNURLED DRIVE PIN PUNCHES-8" LENGTH**

- Driving and removing such things as pins and keys after initial movement by a starting punch
- Made from Tool Steel and uniformly heat treated



STOCK NUMBER	MODEL	POINT EDGE (IN.)	SHIP WEIGHT (LBS.)	CARTON PACK
00340	DDP/1-16	1/16	1	10
00341	DDP/3-32	3/32	1	10
00342	DDP/1-8	1/8	1	10
00343	DDP/5-32	5/32	1	10
00344	DDP/3-16	3/16	1	10
00345	DDP/1-4	1/4	1	10
00346	DDP/5-16	5/16	1	10
00347	DDP/3-8	3/8	1	10





**AUTOMATIC CENTER PUNCHES**

- Adjustable Center Punch for light-to-heavy markings
- ACP/H2 is heavy-duty and has a replaceable point made from hardened alloy steel

STOCK NUMBER	MODEL	TIP DIAMETER (IN.)	BODY DIAMETER (IN.)	OVERALL LENGTH (IN.)	SHIP WEIGHT (LBS.)	CARTON PACK
00311	ACP/H2	1/8	5/8	5-1/2	1	6
00312	STP/ACP/HS	1/8	Spare Tip	1/7	1	6
00314	ACP/1B	1/8	1/2	5	1	6

**MARKING PUNCH**



- Marking Punch force can be regulated by rotating the threaded screw head

STOCK NUMBER	MODEL	TIP DIAMETER (IN.)	BODY DIAMETER (IN.)	OVERALL LENGTH (IN.)	SHIP WEIGHT (LBS.)	CARTON PACK
00313	MP/88	5/32	5/8	5	1	2

**PRICK PUNCHES**



- Marking by small indentation along drawn or scribed lines in layout work
- Also for piercing holes in light gauge metal and other materials
- Aligning and sizing holes in light gauge metal and other materials

STOCK NUMBER	POINT EDGE (IN.)	STOCK SIZE (IN.)	OVERALL LENGTH (IN.)	SHIP WEIGHT (LBS.)	CARTON PACK
34801	5/64	1/4	3	1	6
34802	5/32	3/8	5	1	6
34803	1/4	1/2	6	1	6

**6-PIECE COLD CHISEL SET-VINYL POUCH**



- Cold Chisels: 1/4", 1/2", 5/16", 5/8", 3/8", 3/4"

STOCK NUMBER	DESCRIPTION	SHIP WEIGHT (LBS.)	CARTON PACK
37500	6-Piece Cold Chisel Set	2	2

**5-PIECE COLD CHISEL SET-VINYL POUCH**



- Center Punches: 5/64", 1/4", 1/8", 3/8", 5/32"

STOCK NUMBER	DESCRIPTION	SHIP WEIGHT (LBS.)	CARTON PACK
37506	5-Piece Cold Chisel Set	2	2

**5-PIECE EXTRA LONG PIN PUNCH SET-VINYL POUCH**

- Extra Long Pin Punches: 1/8", 5/16", 3/16", 3/8", 1/4"



STOCK NUMBER	DESCRIPTION	SHIP WEIGHT (LBS.)	CARTON PACK
37516	5-Piece Extra Long Pin Punch Set	2	2

**14-PIECE PUNCH AND CHISEL SET-VINYL POUCH**

- Cold Chisels: 3/8", 1/2", 5/8", 3/4", 7/8"
- Center Punches: 5/32", 1/4"
- Lining Up/Drift Pins: 1/8", 5/32"
- Pin Punches: 1/16", 1/8", 3/16"
- Solid or Starting Punches: 5/16", 1/8"



STOCK NUMBER	DESCRIPTION	SHIP WEIGHT (LBS.)	CARTON PACK
37534	14-Piece Punch and Chisel Set	6	1

**24-PIECE PUNCH AND CHISEL SET-VINYL POUCH**

- Cold Chisels: 1/4", 5/16", 3/8", 1/2", 5/8", 3/4", 7/8"
- Center Punches: 5/64", 5/32", 1/4"
- Pin Punches: 1/16", 3/32", 1/8", 5/32", 3/16", 1/4", 5/16"
- Solid or Starting Punches : 1/16", 1/8", 5/32", 3/16", 1/4", 5/16"
- Automatic Center Punch: 1/8"



STOCK NUMBER	DESCRIPTION	SHIP WEIGHT (LBS.)	CARTON PACK
37536	24-Piece Punch and Chisel Set	7	1

**26-PIECE PUNCH AND CHISEL SET-VINYL POUCH**

- Cold Chisels: 1/4", 1/16", 3/8", 1/2", 5/8", 3/4", 7/8", 1"
- Extra Long Cold Chisels: 1/2"
- Prick Punch: 3/8"
- Center Punches: 5/32", 3/8", 1/4"
- Pin Punches: 3/32", 1/8", 5/32", 3/16", 1/4", 7/32"
- Drift Punches: 1/8", 3/16", 1/4"
- Starting Punches: 1/16", 1/8", 3/16", 1/4"



STOCK NUMBER	DESCRIPTION	SHIP WEIGHT (LBS.)	CARTON PACK
37542	26-Piece Punch and Chisel Set	10	1



7-PIECE PUNCH SET — VINYL POUCH

- Pin Punches: 1/16", 3/32", 1/8", 5/32", 3/16", 1/4", 7/32"

STOCK NUMBER	DESCRIPTION	SHIP WEIGHT (LBS.)	CARTON PACK
37544	7-Piece Punch Set	1	2

7-PIECE DRIFT PIN PUNCH SET — VINYL POUCH

- Drift Pins: 1/8", 5/32", 3/16", 1/4", 5/16", 3/8", 3/32"

STOCK NUMBER	DESCRIPTION	SHIP WEIGHT (LBS.)	CARTON PACK
37548	7-Piece Drift Pin Punch Set	6	1

5-PIECE KNURLED CENTER PUNCH SET — VINYL POUCH

- Center Punches: 1/16", 5/64", 3/32", 1/8", 5/32"

STOCK NUMBER	DESCRIPTION	SHIP WEIGHT (LBS.)	CARTON PACK
00322	5-Piece Knurled Center Punch Set	1	4

8-PIECE 4" KNURLED DRIVE PIN PUNCH SET — VINYL POUCH

- Pin Punches: 1/16", 3/32", 1/8", 5/32", 3/16", 7/32", 1/4", 5/16"

STOCK NUMBER	DESCRIPTION	SHIP WEIGHT (LBS.)	CARTON PACK
00339	8-Piece Knurled 4" Drive Pin Punch Set	1	2

8-PIECE 8" KNURLED DRIVE PIN PUNCH SET — VINYL POUCH

- Pin Punches: 1/16", 3/32", 1/8", 5/32", 3/16", 1/4", 5/16", 3/8"

STOCK NUMBER	DESCRIPTION	SHIP WEIGHT (LBS.)	CARTON PACK
00349	8-Piece Knurled 8" Drive Pin Punch Set	1	2

16-PIECE SET-MAPLE BLOCK

- Cold Chisels: 1/4", 3/4", 1/2", 5/8", 1"
- Prick Punch: 5/32"
- Center Punches: 1/4", 5/32"
- Pin Punches: 3/32", 3/16", 1/8", 1/4", 5/32"
- Drift Punches: 1/8", 3/16", 5/32"

STOCK NUMBER	DESCRIPTION	SHIP WEIGHT (LBS.)	CARTON PACK
00350	16-Piece Maple Block Set	9	1

POLISHMASTER® PROFESSIONAL WAXERS

- Random orbital action for top quality finish without damaging paint
- High performance fan assures efficient cooling
- All ball bearing construction for extra durability
- Direct drive motor for smooth and quiet operation
- Contoured, comfort-grip handle designed for polishing hard to reach areas
- Lock-on button on Model 2301 for one hand operation



STOCK NUMBER	MODEL	PAD DIA. (IN.)	AMPS	OSCILATIONS PER MINUTE	RPM	CORD TYPE	WARRANTY	SHIP WEIGHT (LBS.)	CARTON PACK
01900	1901	9	.85	2000@120V, 60Hz (No Load)	3600@120V, 60Hz (No Load)	Two Prong	90 days	6	1
02100	2101	11	1.5	1900@120V, 60Hz (No Load)	3200@120V, 60Hz (No Load)	Grounded	180 days	8	1
02300	2301	12	1.8	2200@120V, 60Hz (No Load)	3400@120V, 60Hz (No Load)	Grounded	1 Year	11	1



**POLISHING BONNETS**

**9" - 10" POLISHING BONNETS**

STOCK NUMBER	DESCRIPTION	BONNETS PER PACKAGE	SHIP WEIGHT (LBS.)	CARTON PACK
00021	Wax Applicator Bonnet	4	1	1
00080	Terry Cloth Bonnet	2	1	1
00031	Foam Bonnet	1	1	1
00045	Fleece Bonnet	1	1	1

**11" - 12" POLISHING BONNETS**

STOCK NUMBER	DESCRIPTION	BONNETS PACKAGE	SHIP WEIGHT (LBS.)	CARTON PACK
00022	Wax Applicator Bonnet	4	1	1
00085	Terry Cloth Bonnet	2	1	1
00032	Foam Bonnet	1	1	1
00046	Fleece Bonnet	1	1	1

**BENCH GRINDERS**

- Locking, adjustable, precision machined tool rests hold work at the desired angle without slipping
- Shatter resistant eye shields help to protect the user's eyes
- Adjustable spark arrestor controls sparks
- Light with flexible shaft and adjustable shade can be positioned at any angle
- Water pot holds water or oil to cool workpiece
- Wheel dressing tool included
- All models are CSA approved

**SEE JET Bench Grinders on pages 122 and 123**

**PEDESTAL BASE FOR BENCH GRINDERS**

- Cast iron base for all bench grinders
- Provides a stable working platform
- Easy mounting to pre-drilled surface

STOCK NUMBER	MODEL	DESCRIPTION	SHIP WEIGHT (LBS.)	CARTON PACK
577172	JPS2A	Cast Iron Base for all Bench Grinders	55	1

**ALUMINUM-OXIDE GRINDING WHEELS**

- Great for general purpose use

STOCK NUMBER	DIAMETER (IN.)	FACE WIDTH (IN.)	GRIT SIZE	ARBOR HOLE (IN.)	MAXIMUM FREE SPEED (RPM)	SHIP WEIGHT (LBS.)	CARTON PACK
58026	6	3/4	36	1/2-1	4140	2	1
58025	6	3/4	46	1/2-1	4140	2	1
58024	6	3/4	60	1/2-1	4140	2	1
58027	6	1	60	1/2-1	3600	3	1
56032	7	1	36	1/2-1	3600	4	1
56030	7	1	60	1/2-1	3600	4	1
56035	8	1	36	5/8-3/4-1	3600	4	1
56034	8	1	46	5/8-3/4-1	3600	5	1
56033	8	1	60	5/8-3/4-1	3600	5	1
58116	10	1	46	3/4-1	2480	7	1
58115	10	1	60	3/4-1	2480	7	1

**CRIMPED WIRE WHEELS**

- Made of high quality steel wire

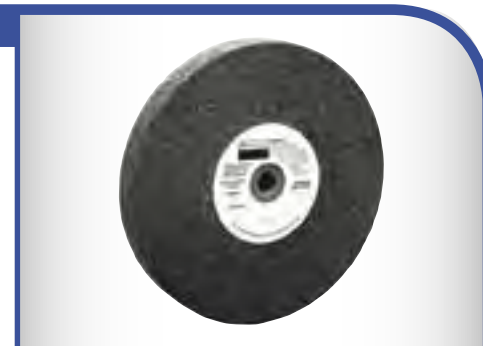
STOCK NUMBER	DIAMETER (IN.)	WIRE TYPE	ARBOR HOLE (IN.)	MAXIMUM RPM	SHIP WEIGHT (LBS.)	CARTON PACK
52000	3	Coarse	3/8-1/2	5000	3	10
52001	3	Fine	3/8-1/2	5000	3	10
52002	4	Coarse	3/8-1/2	4500	3	6
52003	4	Fine	3/8-1/2	4500	3	6
52004	5	Coarse	1/2-5/8	4500	5	6
52005	5	Fine	1/2-5/8	4500	5	6
52006	6	Coarse	1/2-5/8	4500	5	6
52007	6	Fine	1/2-5/8	4500	5	6
52008	8	Coarse	1/2-5/8	3750	6	6
52009	8	Fine	1/2-5/8	3600	6	6

**WIRE WHEEL ACCESSORIES**

STOCK NUMBER	DESCRIPTION	SHIP WEIGHT (LBS.)	CARTON PACK
55997	Spacers — package of 2 to be used with bench grinder wheels	2	12
55998	Arbor Shaft — to be used with 3" and 4" wheels with arbor holes	3	12
55999	Spindle Adapter — M10 x 1.25/20,000 RPM Converts 5/8-11 diameter threaded arbor hole to metric M10 x 1.25 to accommodate a wider choice of power tools	2	12



STOCK NUMBER	WHEEL DIA. (IN.)	MOTOR (HP)	RPM	SHIP WEIGHT (LBS.)	CARTON PACK
17201	6	1/2	3,450	24	1
17202	8	1	3,450	58	1



WILTON POWER TOOLS

WILTON POWER TOOLS