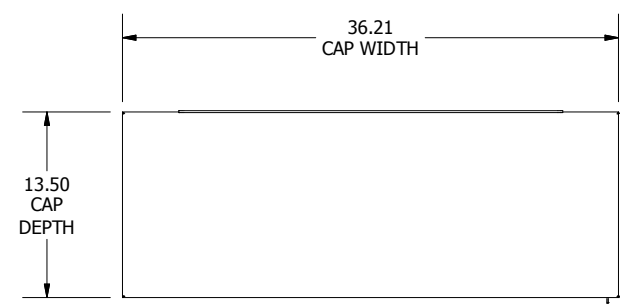
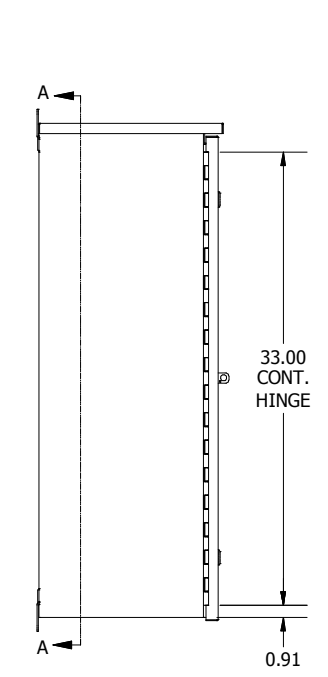


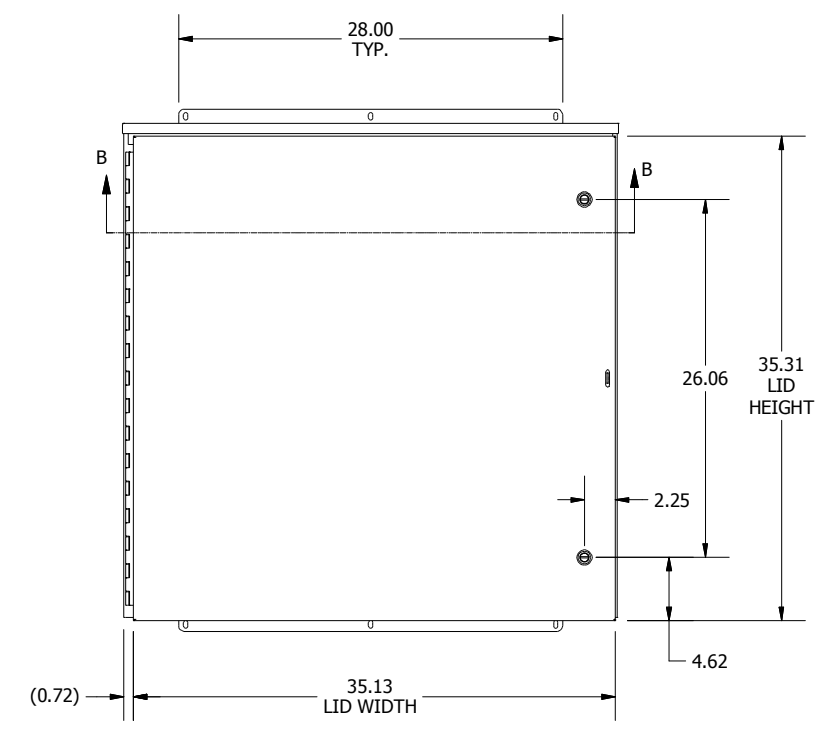
| REVISION HISTORY | | | |
|------------------|--------------------|----|------------|
| REV | DESCRIPTION | BY | DATE |
| A | ECO#: HFW161018-02 | VD | 02/06/2017 |



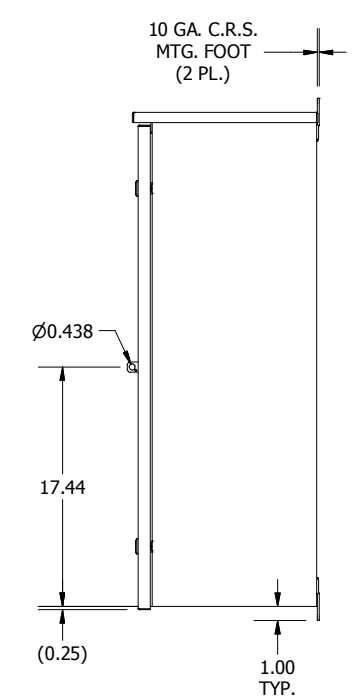
TOP VIEW



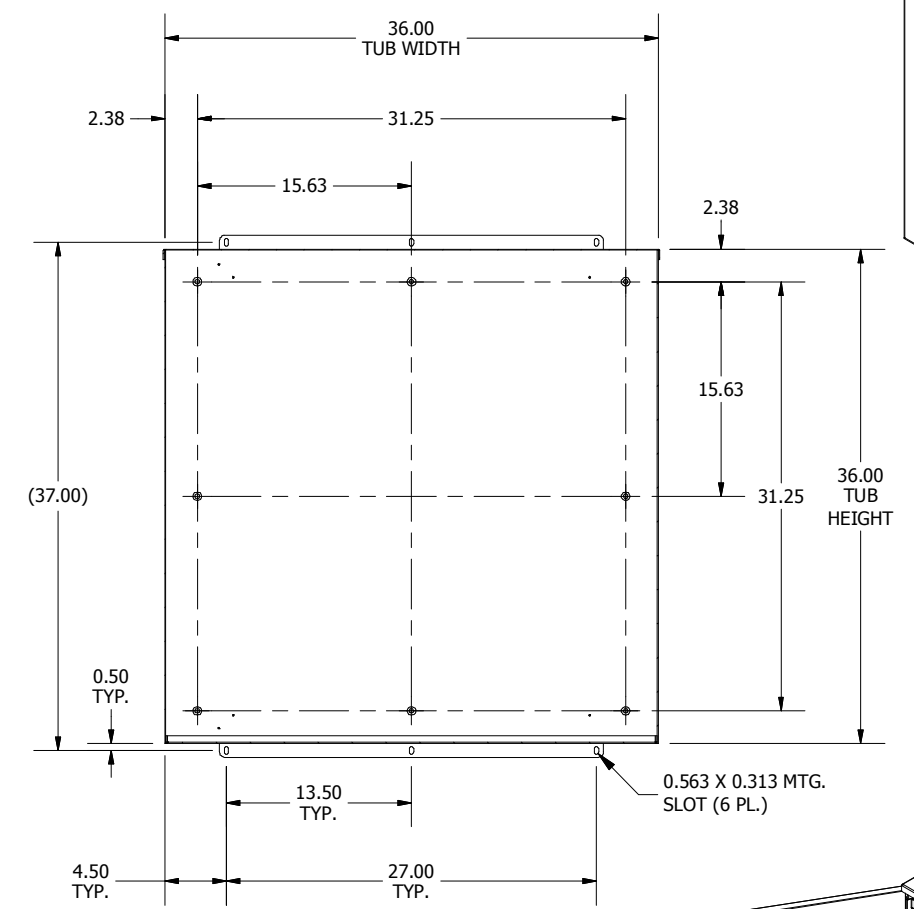
LEFT SIDE VIEW



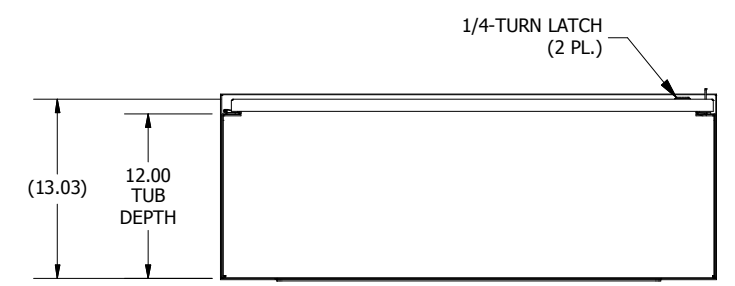
FRONT VIEW



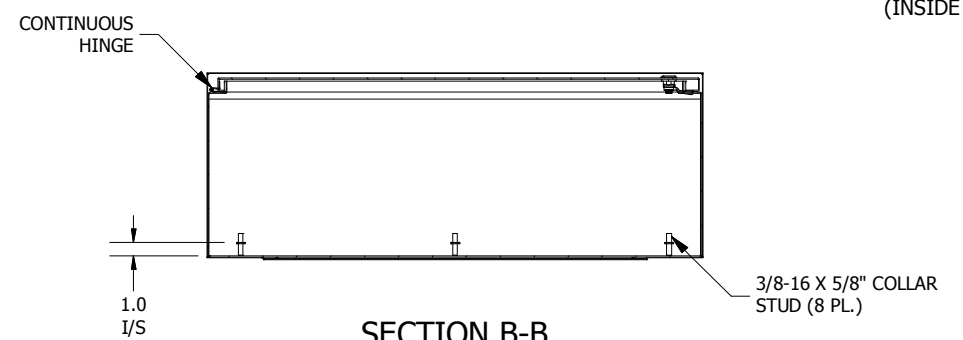
RIGHT SIDE VIEW



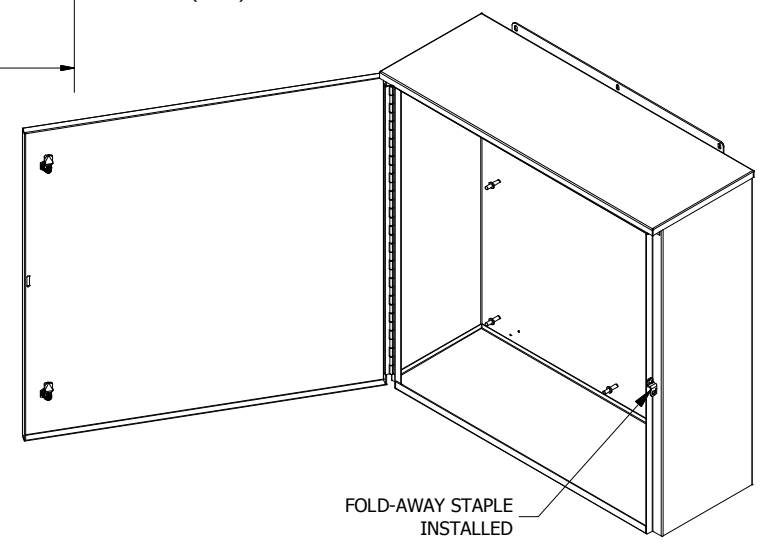
**SECTION A-A
(INSIDE BACK OF ENCL.)**



BOTTOM VIEW




**SECTION B-B
(INSIDE TOP OF ENCL.)**



**FOLD-AWAY STAPLE
INSTALLED**

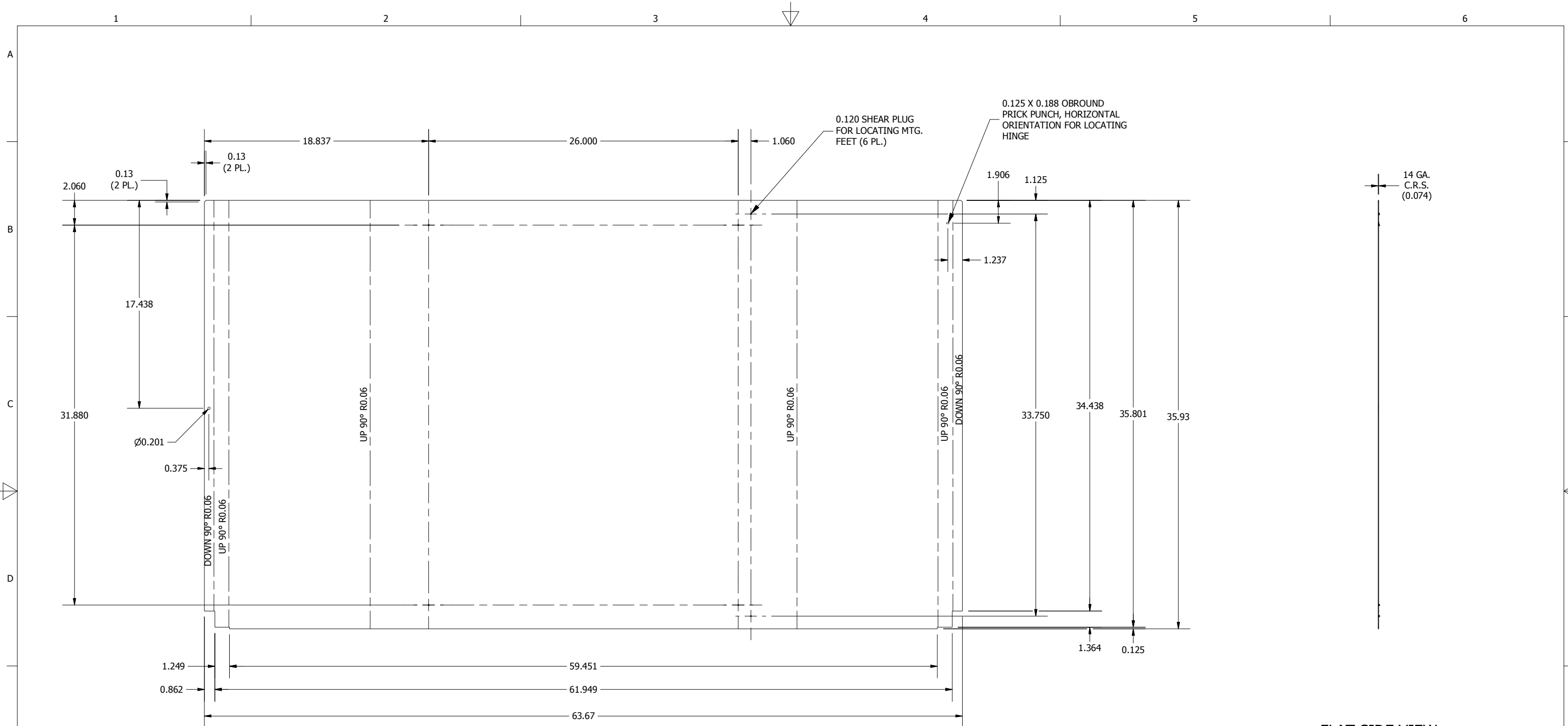
- NOTES:**
1. ALL DIMENSIONS ARE FROM OUTSIDE UNLESS OTHERWISE NOTED.
 2. ENCLOSURE IS FABRICATED FROM 14 GA. CARBON STEEL.
 3. COLLAR STUDS ARE PROVIDED FOR MOUNTING OPTIONAL SUB PANEL.
 4. ENCLOSURE IS WELDED TOGETHER.
 5. FINISH: ANSI-61 GRAY TEXTURE POLYESTER POWDER (INTERIOR/EXTERIOR).
 6. ENCLOSURE IS RATED UL TYPE 3R.

DIMENSIONS ARE IN INCHES (MM). TOLERANCES UNLESS OTHERWISE SPECIFIED ARE AS FOLLOWS:
 .X = ±.06 (1.6)
 .XX = ±.031 (.8)
 .XXX = ±.016 (.25)
 Ø = ±.005
 ANGLE TOL ±1'


WIEGMANN
 FREEBURG, ILLINOIS, USA

-NOTICE- THIS DRAWING IS THE PROPERTY OF WIEGMANN, A DIVISION OF HUBBELL INCORPORATED. IT IS LOANED TO YOU AND MUST NOT BE USED IN ANY WAY DETRIMENTAL TO THE INTEREST OF WIEGMANN.

| | | | |
|--|-----------------------|--------------|--------------------------|
| PART NUMBER: RHC363612 | MATERIAL: SEE NOTE | SCALE: NONE | CHK'D DATE: 7/7/2014 |
| DESCRIPTION: RHC, NEMA 3R ENCL., CS, 36X36X12 | | DRAWN BY: PS | CREATED ON: 7/7/2014 |
| | | CHK'D BY: VR | DWG. NO. HWD RHC363612_1 |
| | | SHEET 1 OF 9 | REV. A |



BLR FLAT PATTERN VIEW

FLAT SIDE VIEW

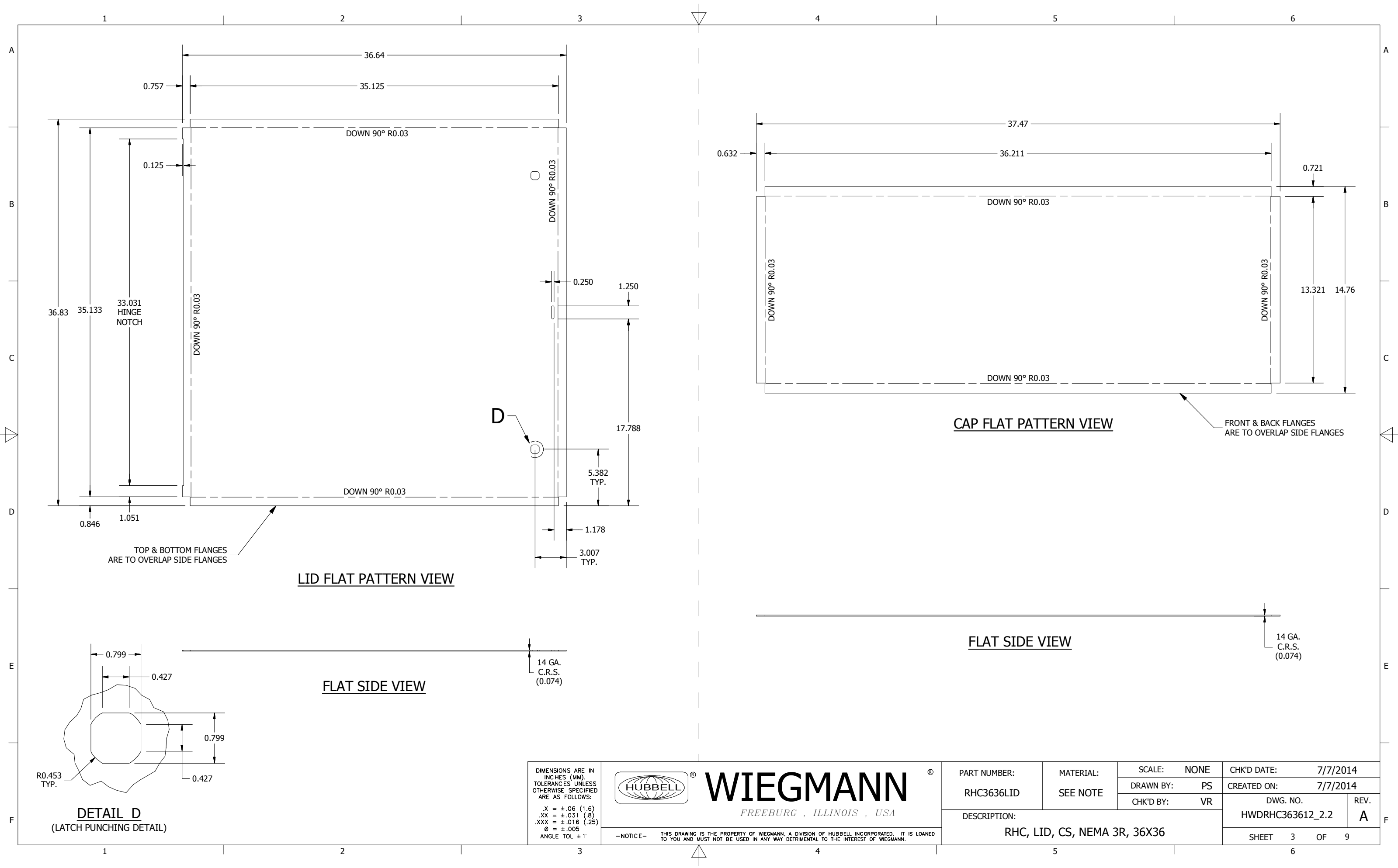
DIMENSIONS ARE IN INCHES (MM). TOLERANCES UNLESS OTHERWISE SPECIFIED ARE AS FOLLOWS:
 .X = ±.06 (1.6)
 .XX = ±.031 (.8)
 .XXX = ±.016 (.25)
 Ø = ±.005
 ANGLE TOL ±1'



WIEGMANN
 FREEBURG, ILLINOIS, USA

—NOTICE— THIS DRAWING IS THE PROPERTY OF WIEGMANN, A DIVISION OF HUBBELL INCORPORATED. IT IS LOANED TO YOU AND MUST NOT BE USED IN ANY WAY DETRIMENTAL TO THE INTEREST OF WIEGMANN.

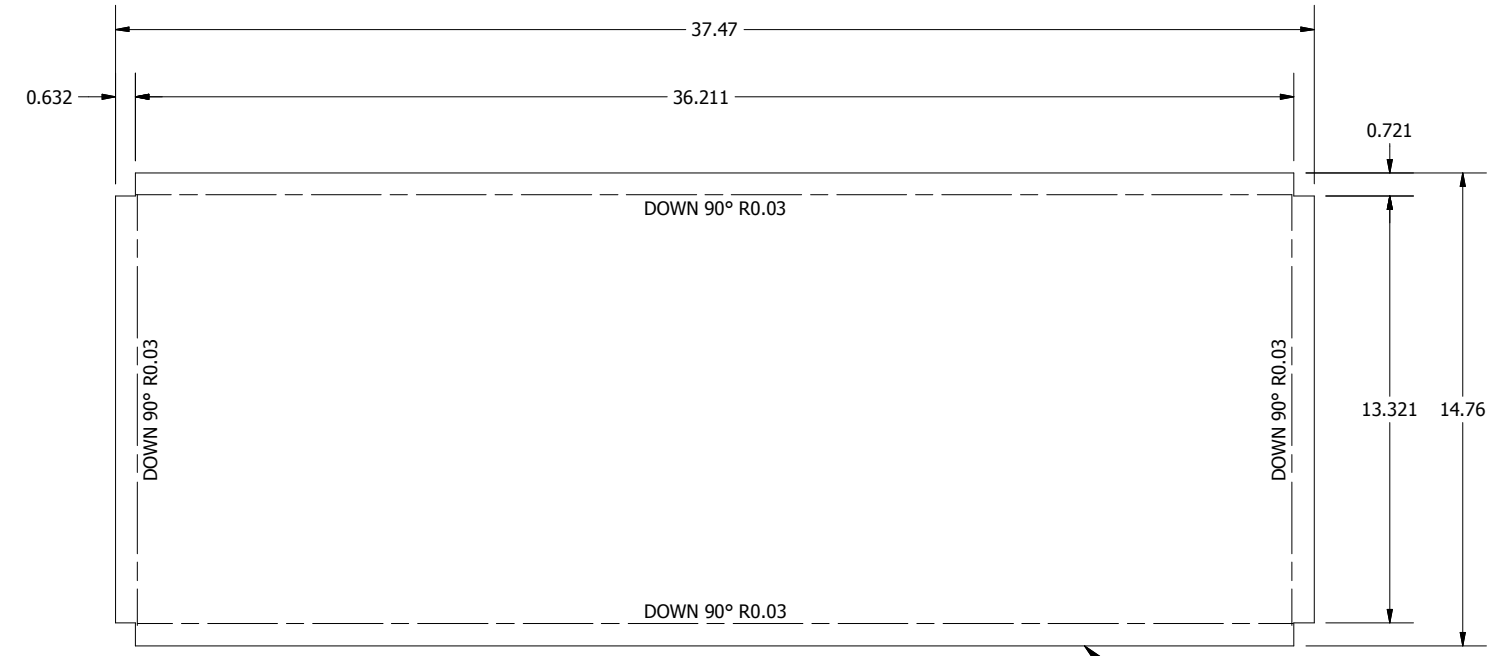
| | | | |
|--|-----------------------|--------------|-----------------------------|
| PART NUMBER: RHC363612BLR | MATERIAL: SEE NOTE | SCALE: NONE | CHK'D DATE: 7/7/2014 |
| | | DRAWN BY: PS | CREATED ON: 7/7/2014 |
| DESCRIPTION: RHC, BLR, MEDIUM, CS, 36X36X12 | | CHK'D BY: VR | DWG. NO. HWRHC363612_2.1 |
| | | REV. A | |
| | | SHEET 2 OF 9 | |



36.83
35.133
33.031
HINGE
NOTCH

TOP & BOTTOM FLANGES
ARE TO OVERLAP SIDE FLANGES

LID FLAT PATTERN VIEW



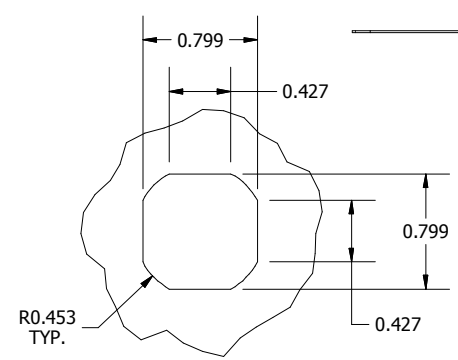
CAP FLAT PATTERN VIEW

FRONT & BACK FLANGES
ARE TO OVERLAP SIDE FLANGES



FLAT SIDE VIEW

14 GA.
C.R.S.
(0.074)



DETAIL D
(LATCH PUNCHING DETAIL)

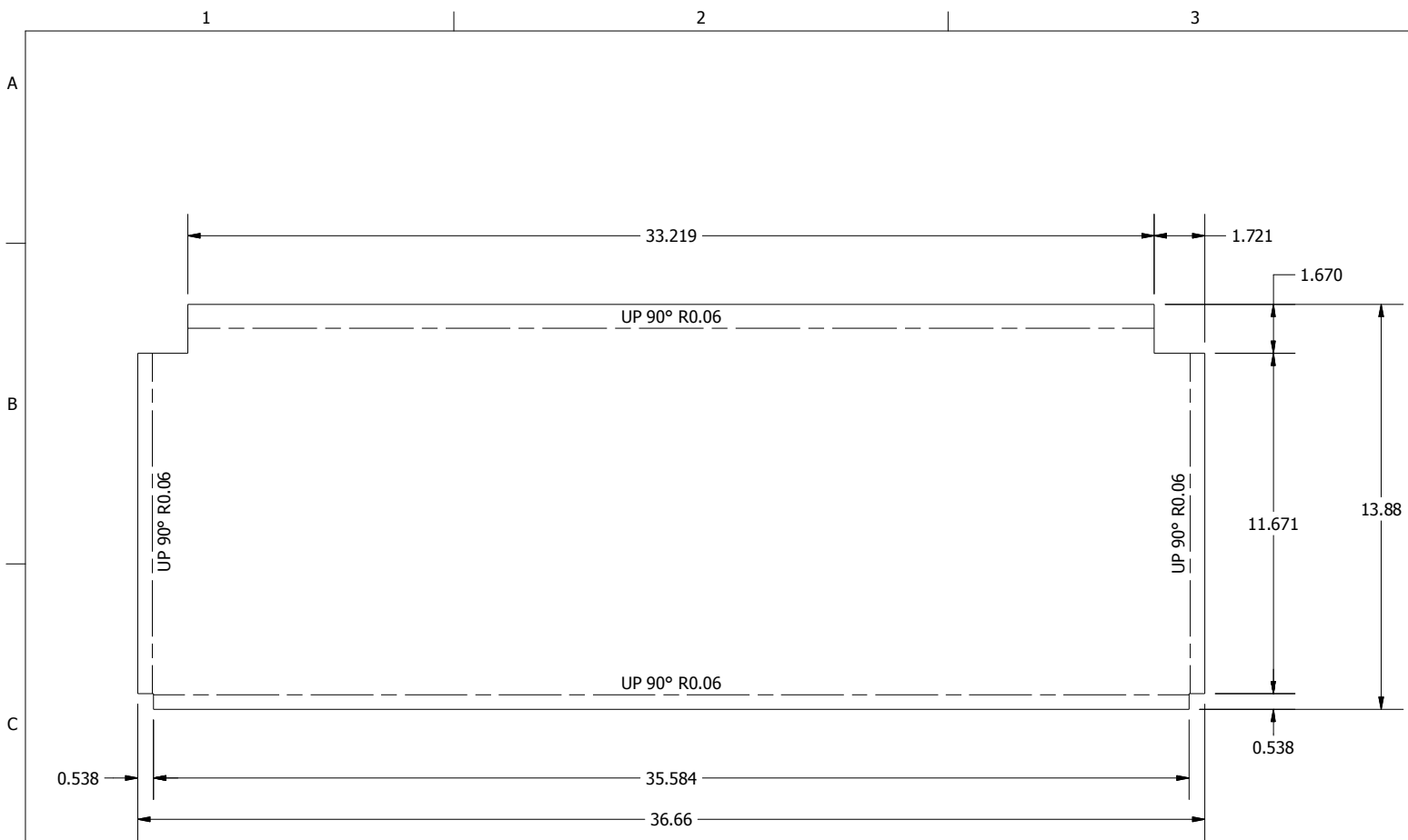
DIMENSIONS ARE IN
INCHES (MM).
TOLERANCES UNLESS
OTHERWISE SPECIFIED
ARE AS FOLLOWS:
.X = ±.06 (1.6)
.XX = ±.031 (.8)
.XXX = ±.016 (.25)
Ø = ±.005
ANGLE TOL ±1'



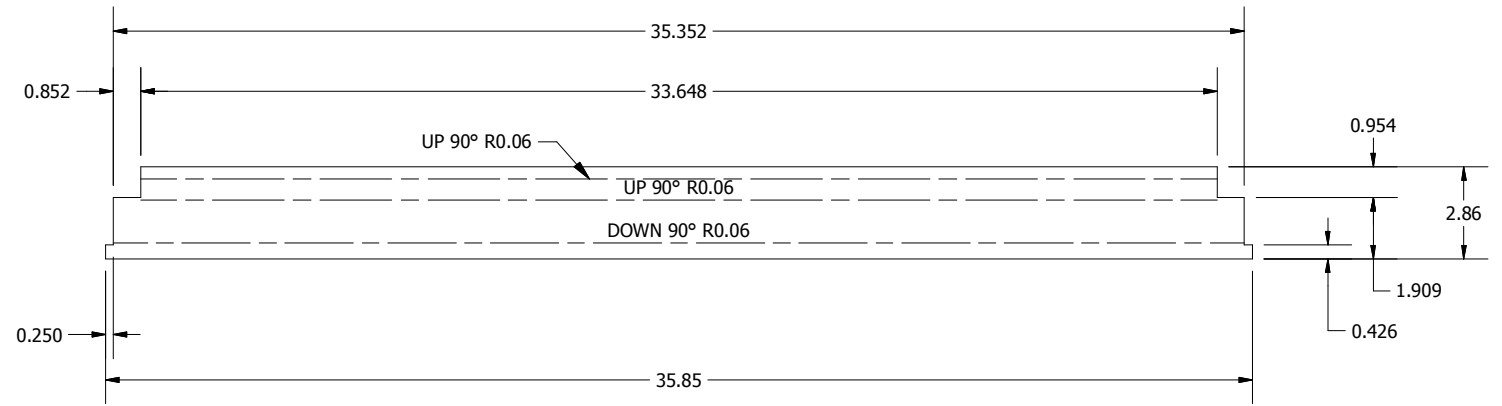
WIEGMANN
FREEBURG, ILLINOIS, USA

-NOTICE- THIS DRAWING IS THE PROPERTY OF WIEGMANN, A DIVISION OF HUBBELL INCORPORATED. IT IS LOANED TO YOU AND MUST NOT BE USED IN ANY WAY DETRIMENTAL TO THE INTEREST OF WIEGMANN.

| | | | |
|--|-----------------------|------------------------------|----------------------|
| PART NUMBER: RHC3636LID | MATERIAL: SEE NOTE | SCALE: NONE | CHK'D DATE: 7/7/2014 |
| | | DRAWN BY: PS | CREATED ON: 7/7/2014 |
| DESCRIPTION: RHC, LID, CS, NEMA 3R, 36X36 | CHK'D BY: VR | DWG. NO. HWDRHC363612_2.2 | REV. A |
| | SHEET 3 OF 9 | | |



BOTTOM ENDWALL FLAT PATTERN VIEW



TOP ENDWALL FLAT PATTERN VIEW



FLAT SIDE VIEW

14 GA.
C.R.S.
(0.074)



FLAT SIDE VIEW

14 GA.
C.R.S.
(0.074)

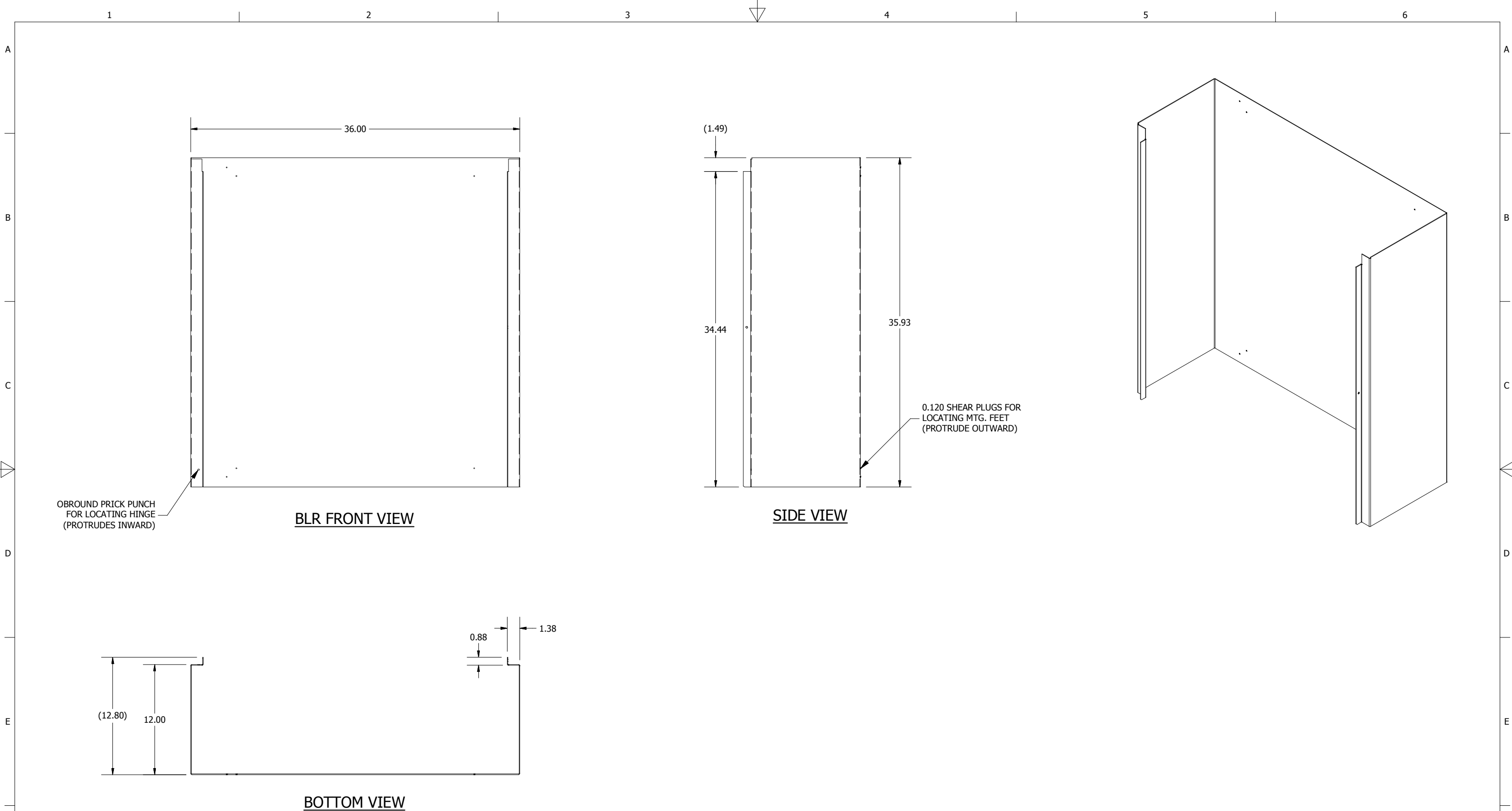
DIMENSIONS ARE IN INCHES (MM). TOLERANCES UNLESS OTHERWISE SPECIFIED ARE AS FOLLOWS:
.X = ±.06 (1.6)
.XX = ±.031 (.8)
.XXX = ±.016 (.25)
Ø = ±.005
ANGLE TOL ± 1'



WIEGMANN
FREEBURG, ILLINOIS, USA

-NOTICE- THIS DRAWING IS THE PROPERTY OF WIEGMANN, A DIVISION OF HUBBELL INCORPORATED. IT IS LOANED TO YOU AND MUST NOT BE USED IN ANY WAY DETRIMENTAL TO THE INTEREST OF WIEGMANN.

| | | | |
|--|-----------------------|--------------|----------------------------|
| PART NUMBER: RHC3612BTM | MATERIAL: SEE NOTE | SCALE: NONE | CHK'D DATE: 7/7/2014 |
| DESCRIPTION: RHC, BTM, CS, NEMA 3R, 36X12 | | DRAWN BY: PS | CREATED ON: 7/7/2014 |
| | | CHK'D BY: VR | DWG. NO. HWD RHC363612_2.3 |
| | | REV. A | |
| | | SHEET 4 OF 9 | |



OBROUND PRICK PUNCH
FOR LOCATING HINGE
(PROTRUDES INWARD)

BLR FRONT VIEW

SIDE VIEW

BOTTOM VIEW

0.120 SHEAR PLUGS FOR
LOCATING MTG. FEET
(PROTRUDE OUTWARD)

DIMENSIONS ARE IN
INCHES (MM).
TOLERANCES UNLESS
OTHERWISE SPECIFIED
ARE AS FOLLOWS:
.X = ±.06 (1.6)
.XX = ±.031 (.8)
.XXX = ±.016 (.25)
Ø = ±.005
ANGLE TOL ±1°



WIEGMANN
FREEBURG, ILLINOIS, USA

—NOTICE— THIS DRAWING IS THE PROPERTY OF WIEGMANN, A DIVISION OF HUBBELL INCORPORATED. IT IS LOANED TO YOU AND MUST NOT BE USED IN ANY WAY DETRIMENTAL TO THE INTEREST OF WIEGMANN.

PART NUMBER:
RHC363612BLR

MATERIAL:
SEE NOTE

SCALE: NONE
DRAWN BY: PS
CHK'D BY: VR

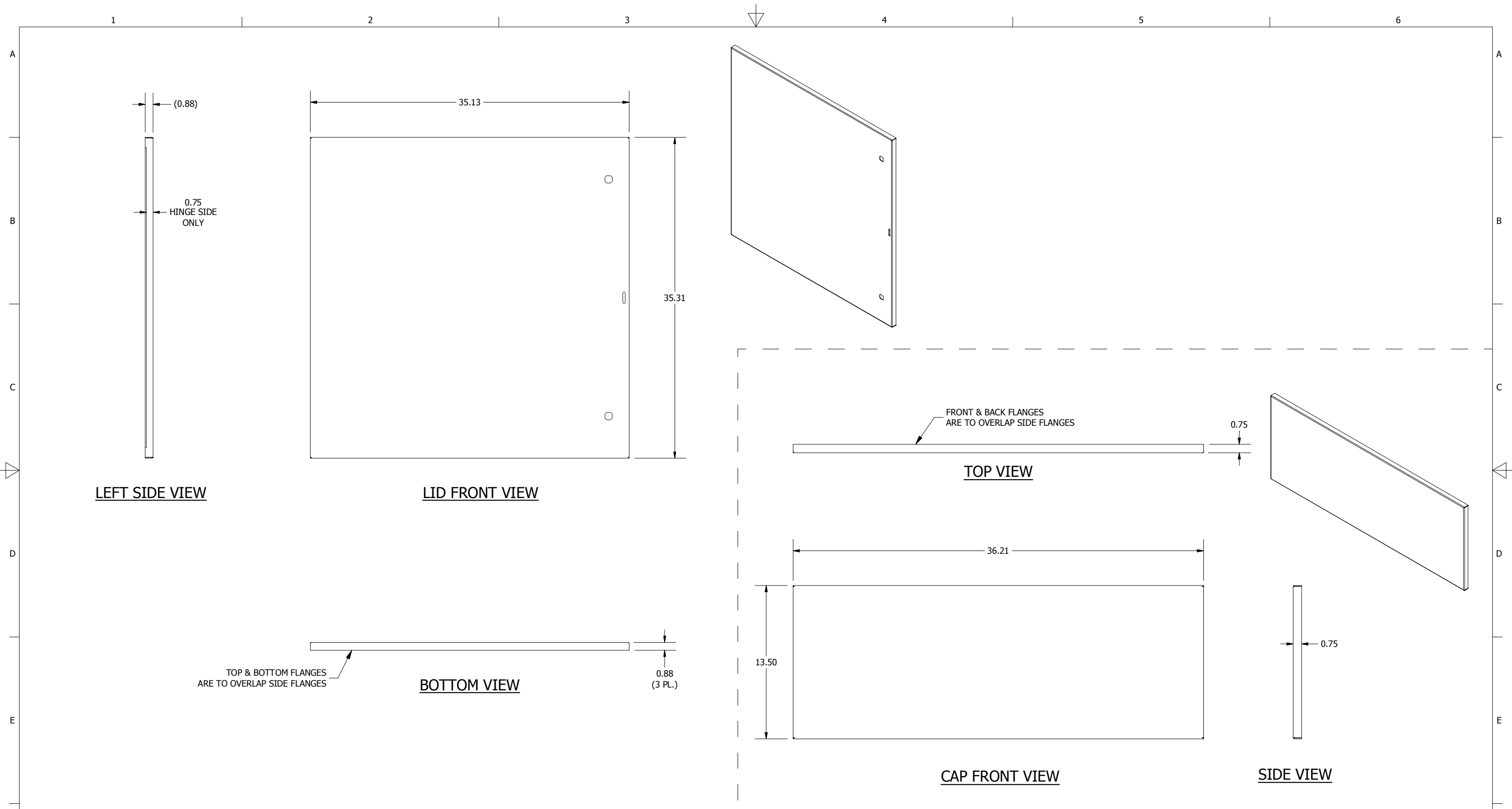
CHK'D DATE: 7/7/2014
CREATED ON: 7/7/2014

DESCRIPTION:
RHC, BLR, MEDIUM, CS, 36X36X12

DWG. NO.
HWDRHC363612_3.1

REV.
A

SHEET 5 OF 9



DIMENSIONS ARE IN INCHES (MM). TOLERANCES UNLESS OTHERWISE SPECIFIED ARE AS FOLLOWS:
 .X = ±.06 (1.6)
 .XX = ±.031 (.8)
 .XXX = ±.016 (.25)
 Ø = ±.005
 ANGLE TOL ±1°



WIEGMANN
 FREEBURG, ILLINOIS, USA

—NOTICE— THIS DRAWING IS THE PROPERTY OF WIEGMANN, A DIVISION OF HUBBELL INCORPORATED. IT IS LOANED TO YOU AND MUST NOT BE USED IN ANY WAY DETRIMENTAL TO THE INTEREST OF WIEGMANN.

PART NUMBER:
 RHC3636LID

MATERIAL:
 SEE NOTE

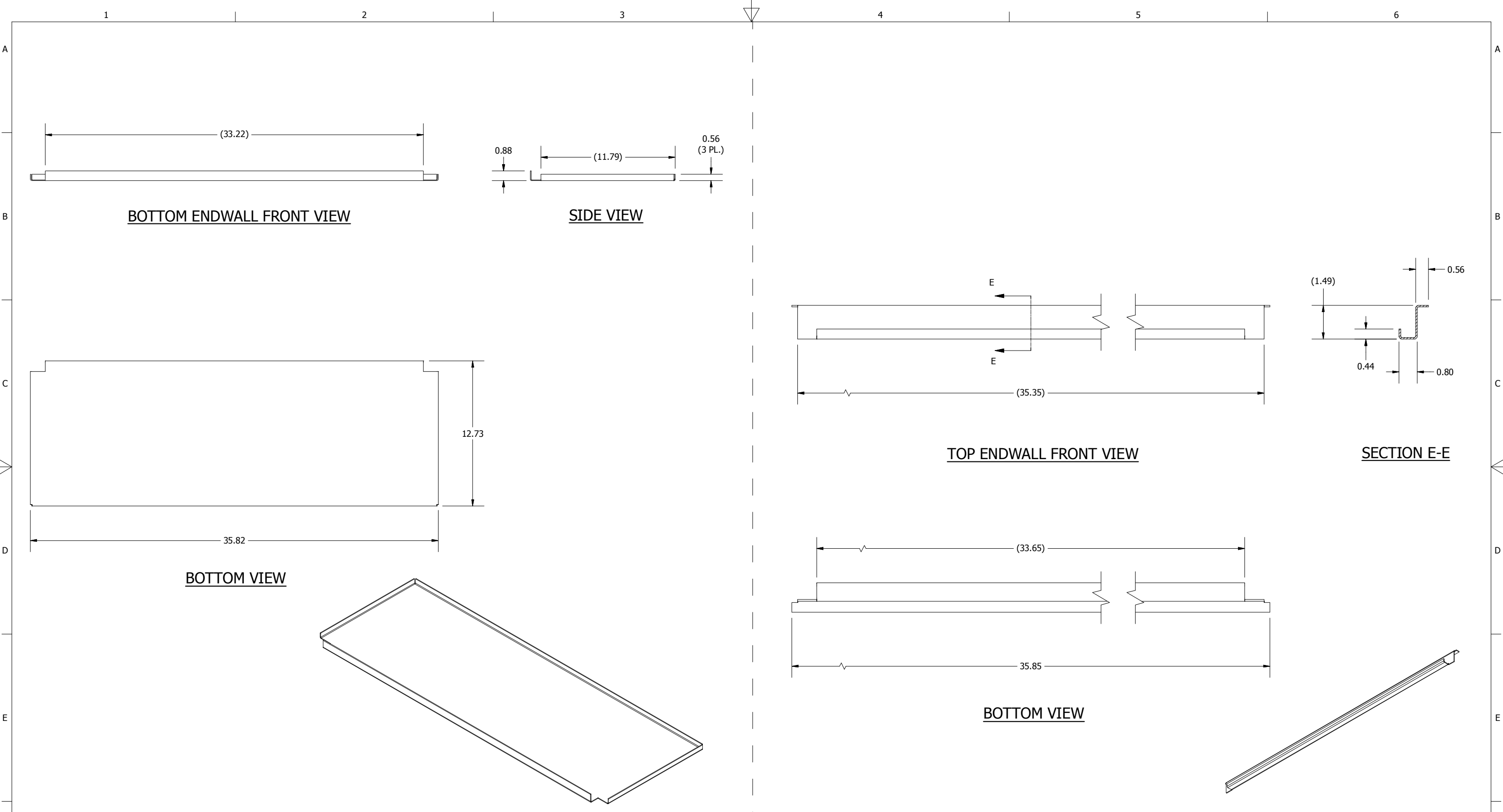
SCALE: NONE
 DRAWN BY: PS
 CHK'D BY: VR

CHK'D DATE: 7/7/2014
 CREATED ON: 7/7/2014



DESCRIPTION:
 RHC, LID, CS, NEMA 3R, 36X36

DWG. NO.
 HWDRHC363612_3.2
 REV.
 A

SHEET 6 OF 9



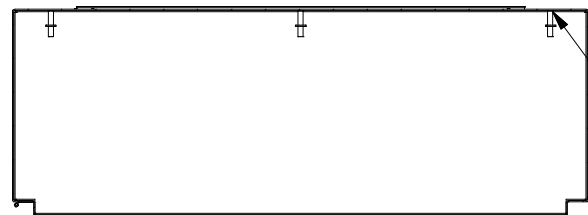
DIMENSIONS ARE IN INCHES (MM). TOLERANCES UNLESS OTHERWISE SPECIFIED ARE AS FOLLOWS:
 .X = ±.06 (1.6)
 .XX = ±.031 (.8)
 .XXX = ±.016 (.25)
 Ø = ±.005
 ANGLE TOL ± 1'

HUBBELL  **WIEGMANN** 
 FREEBURG, ILLINOIS, USA

—NOTICE— THIS DRAWING IS THE PROPERTY OF WIEGMANN, A DIVISION OF HUBBELL INCORPORATED. IT IS LOANED TO YOU AND MUST NOT BE USED IN ANY WAY DETRIMENTAL TO THE INTEREST OF WIEGMANN.

| | | | |
|--|-----------------------|--------------|---------------------------|
| PART NUMBER: RHC3612BTM | MATERIAL: SEE NOTE | SCALE: NONE | CHK'D DATE: 7/7/2014 |
| DESCRIPTION: RHC, BTM, CS, NEMA 3R, 36X12 | | DRAWN BY: PS | CREATED ON: 7/7/2014 |
| | | CHK'D BY: VR | DWG. NO. HWDRHC363612_3.3 |
| | | REV. A | |
| | | SHEET 7 OF 9 | |

| | |
|--------------|--|
| SHEET 7 OF 9 | |
|--------------|--|

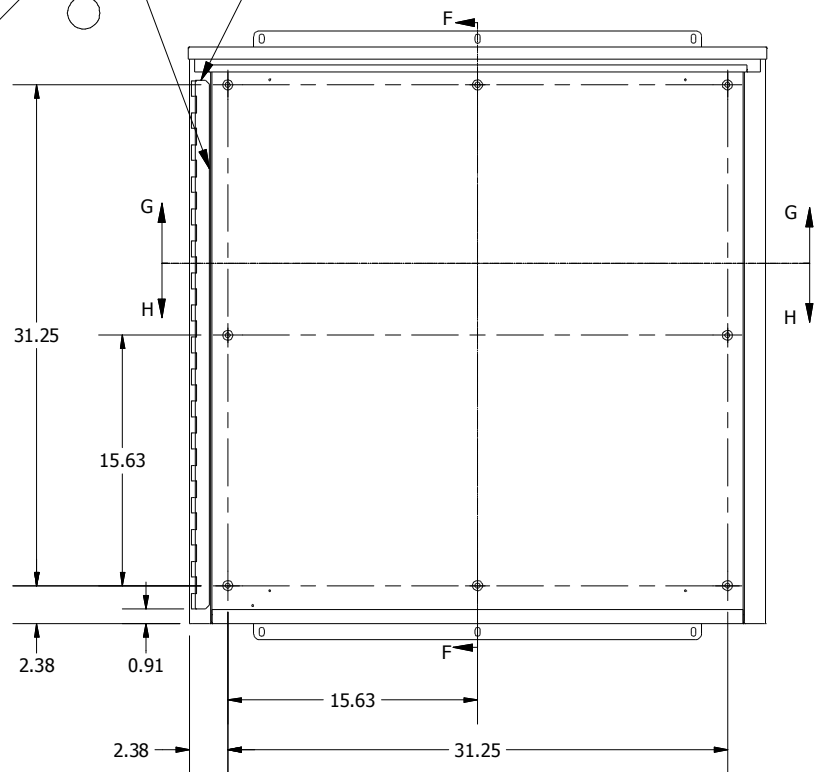


SECTION H-H

TACK WELD BOTTOM ENDWALL TO INSIDE OF BLR ON SIDES EVENLY & THROUGHOUT

SPOT WELD HINGE TO TUB FLANGE EVENLY & THROUGHOUT

TACK WELD ON BOTH ENDS OF HINGE

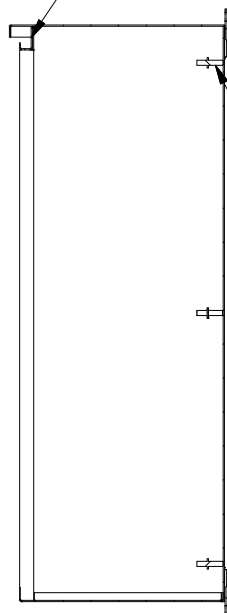


TUB WELD FRONT VIEW

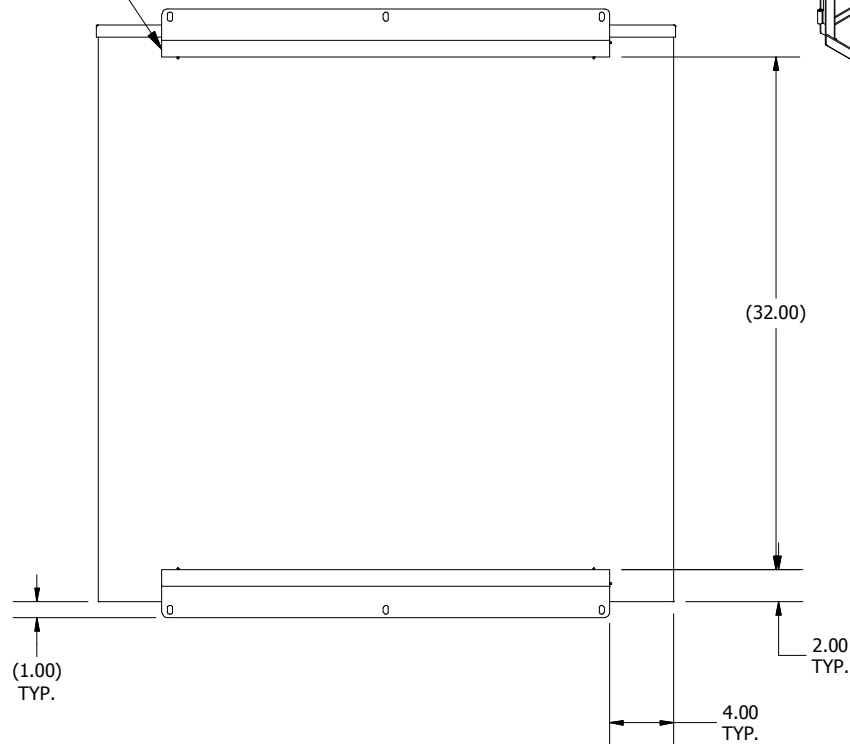
TACK WELD MTG. FOOT ON THREE SIDES TO BACK OF TUB EVENLY & THROUGHOUT (2 PL.)

TOP ENDWALL OVERLAPS BLR FLANGE

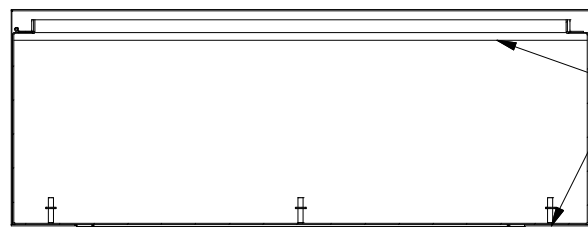
CD WELD 3/8-16 COLLAR STUD (8 PL.)



SECTION F-F



REAR VIEW



SECTION G-G

TACK WELD CAP TO ALL BLR & TOP ENDWALL FLANGES EVENLY & THROUGHOUT

DIMENSIONS ARE IN INCHES (MM). TOLERANCES UNLESS OTHERWISE SPECIFIED ARE AS FOLLOWS:
 .X = ±.06 (1.6)
 .XX = ±.031 (.8)
 .XXX = ±.016 (.25)
 Ø = ±.005
 ANGLE TOL ±1°



WIEGMANN
 FREEBURG, ILLINOIS, USA

—NOTICE— THIS DRAWING IS THE PROPERTY OF WIEGMANN, A DIVISION OF HUBBELL INCORPORATED. IT IS LOANED TO YOU AND MUST NOT BE USED IN ANY WAY DETRIMENTAL TO THE INTEREST OF WIEGMANN.

PART NUMBER:
RHC363612

MATERIAL:
SEE NOTE

SCALE: NONE
 DRAWN BY: PS
 CHK'D BY: VR

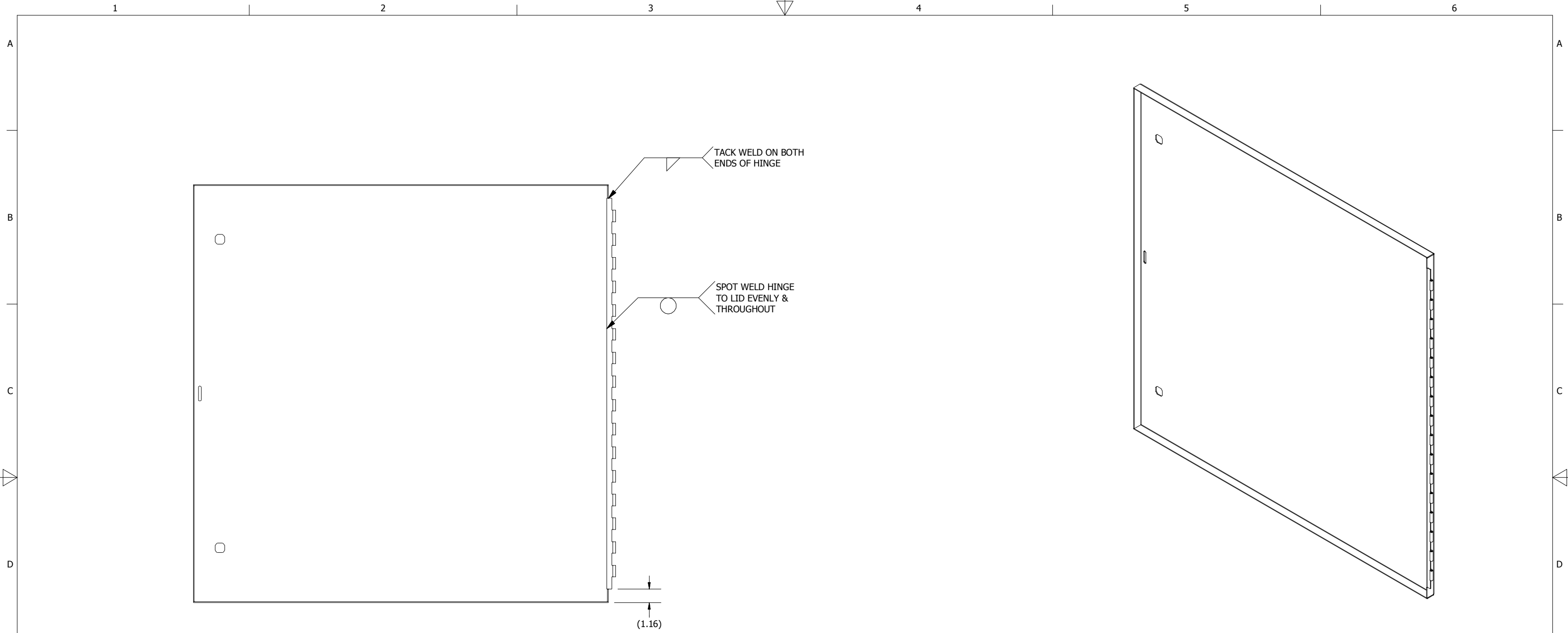
CHK'D DATE: 7/7/2014
 CREATED ON: 7/7/2014

DESCRIPTION:
RHC, NEMA 3R ENCL., CS, 36X36X12

DWG. NO.
HWRHC363612_4.1

REV.
A

SHEET 8 OF 9



LID WELD INSIDE VIEW

DIMENSIONS ARE IN INCHES (MM). TOLERANCES UNLESS OTHERWISE SPECIFIED ARE AS FOLLOWS:
 .X = ±.06 (1.6)
 .XX = ±.031 (.8)
 .XXX = ±.016 (.25)
 Ø = ±.005
 ANGLE TOL ± 1'



WIEGMANN
 FREEBURG , ILLINOIS , USA

—NOTICE— THIS DRAWING IS THE PROPERTY OF WIEGMANN, A DIVISION OF HUBBELL INCORPORATED. IT IS LOANED TO YOU AND MUST NOT BE USED IN ANY WAY DETRIMENTAL TO THE INTEREST OF WIEGMANN.

| | | | |
|--|-----------------------|--------------|-----------------------------|
| PART NUMBER: RHC363612 | MATERIAL: SEE NOTE | SCALE: NONE | CHK'D DATE: 7/7/2014 |
| | | DRAWN BY: PS | CREATED ON: 7/7/2014 |
| DESCRIPTION: RHC, NEMA 3R ENCL., CS, 36X36X12 | | CHK'D BY: VR | DWG. NO. HWRHC363612_4.2 |
| | | REV. A | |
| | | SHEET 9 OF 9 | |