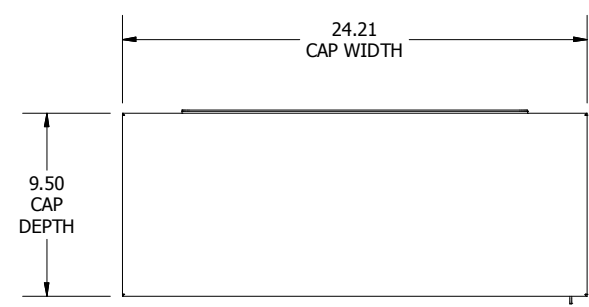
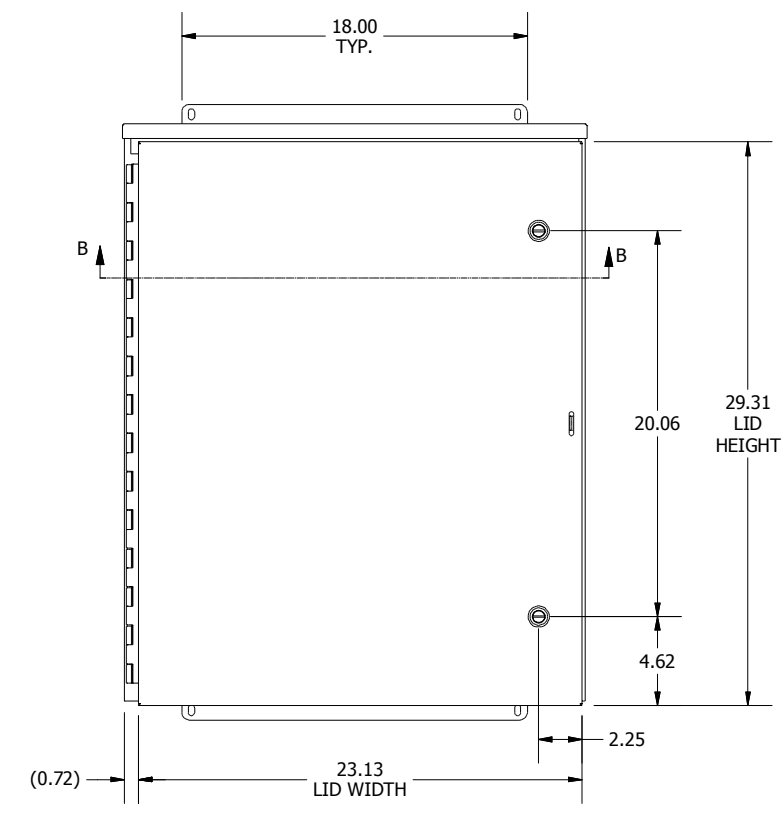


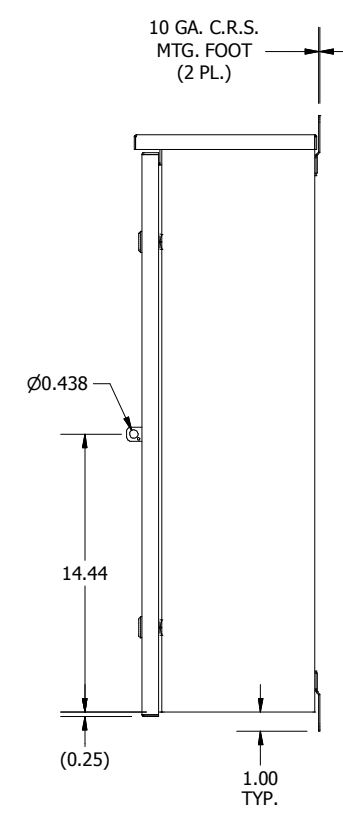
REVISION HISTORY			
REV	DESCRIPTION	BY	DATE
A	ECO#: HFW161018-02	VD	02/06/2017



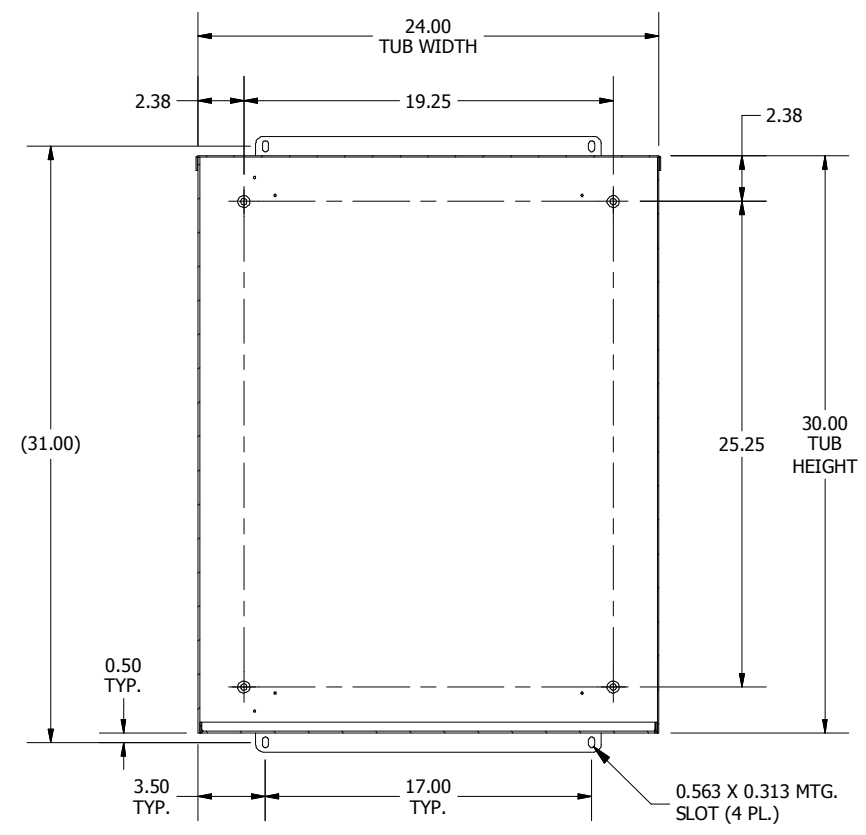
TOP VIEW



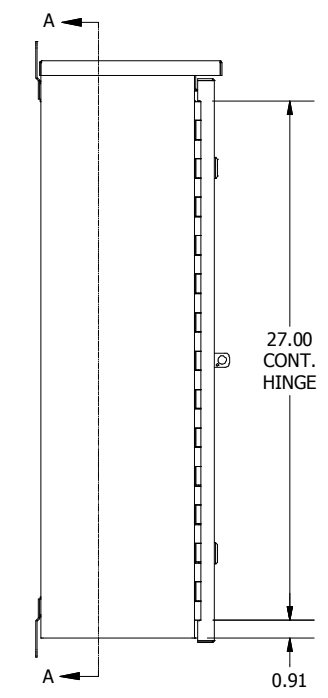
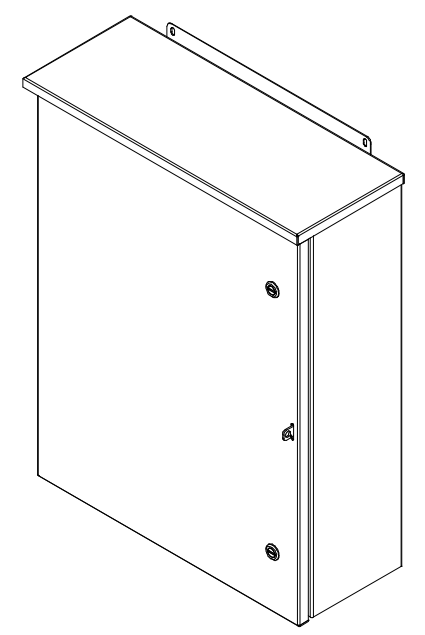
FRONT VIEW



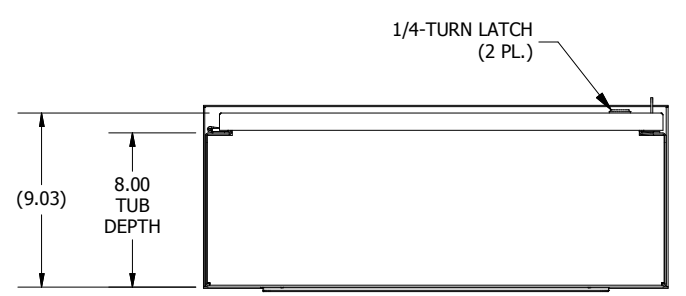
RIGHT SIDE VIEW



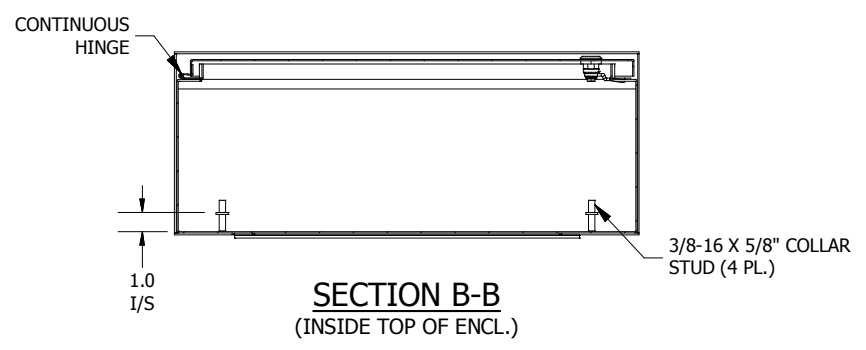
**SECTION A-A
(INSIDE BACK OF ENCL.)**



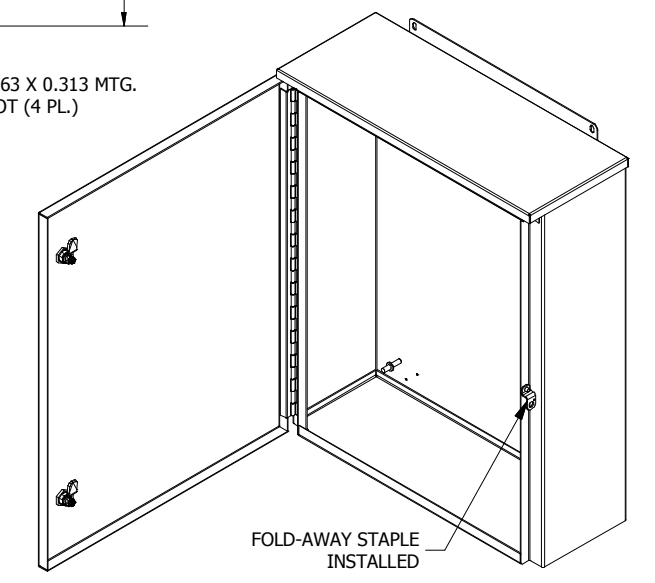
LEFT SIDE VIEW



BOTTOM VIEW




**SECTION B-B
(INSIDE TOP OF ENCL.)**



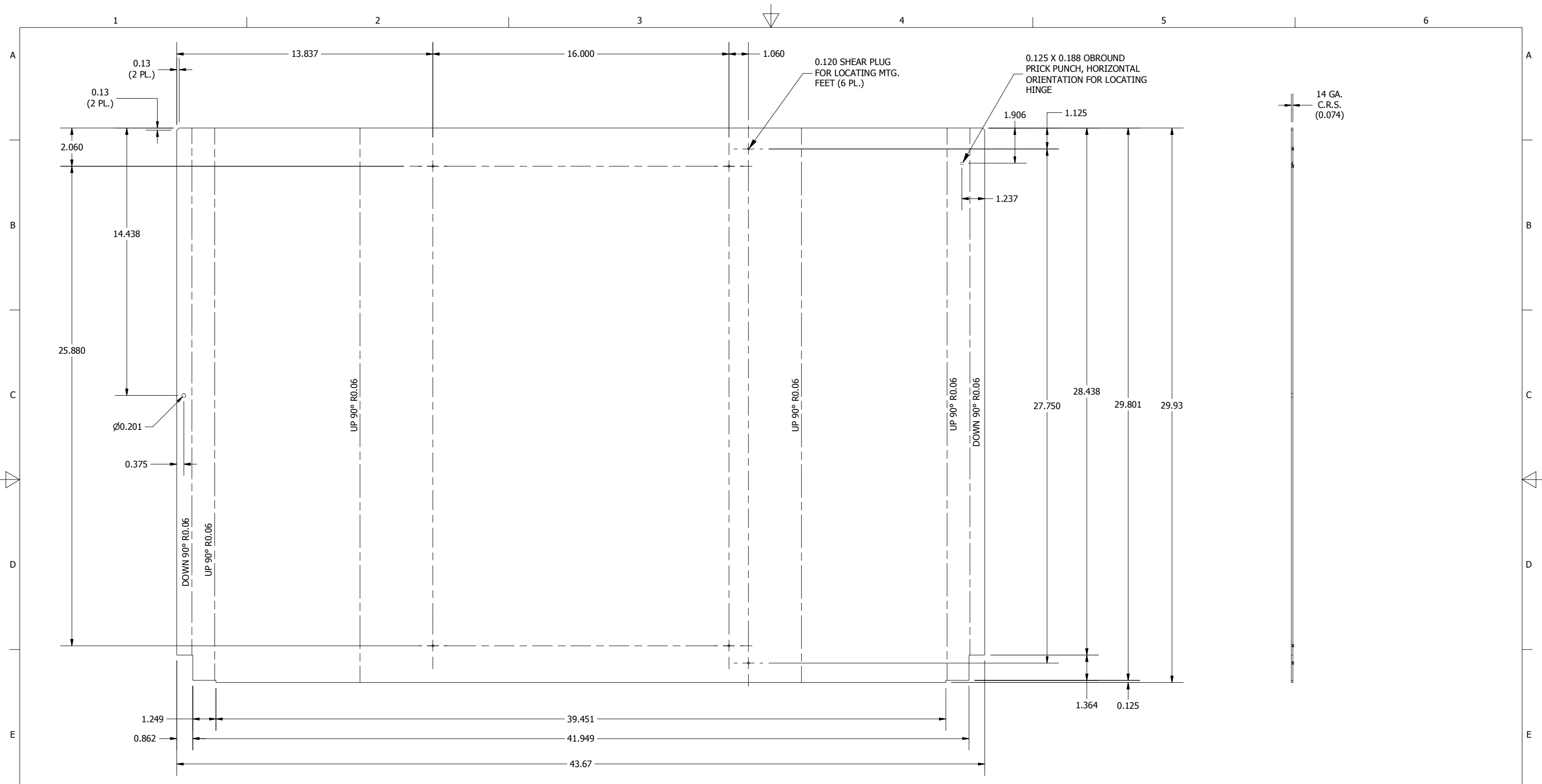
- NOTES:**
1. ALL DIMENSIONS ARE FROM OUTSIDE UNLESS OTHERWISE NOTED.
 2. ENCLOSURE IS FABRICATED FROM 14 GA. CARBON STEEL.
 3. COLLAR STUDS ARE PROVIDED FOR MOUNTING OPTIONAL SUB PANEL.
 4. ENCLOSURE IS WELDED TOGETHER.
 5. FINISH: ANSI-61 GRAY TEXTURE POLYESTER POWDER (INTERIOR/EXTERIOR).
 6. ENCLOSURE IS RATED UL TYPE 3R.

DIMENSIONS ARE IN INCHES (MM). TOLERANCES UNLESS OTHERWISE SPECIFIED ARE AS FOLLOWS:
 .X = ±.06 (1.6)
 .XX = ±.031 (.8)
 .XXX = ±.016 (.25)
 Ø = ±.005
 ANGLE TOL ±1'


WIEGMANN
 FREEBURG, ILLINOIS, USA

-NOTICE- THIS DRAWING IS THE PROPERTY OF WIEGMANN, A DIVISION OF HUBBELL INCORPORATED. IT IS LOANED TO YOU AND MUST NOT BE USED IN ANY WAY DETRIMENTAL TO THE INTEREST OF WIEGMANN.

PART NUMBER: RHC302408	MATERIAL: SEE NOTE	SCALE: NONE	CHK'D DATE: 6/26/2014
DESCRIPTION: RHC, NEMA 3R ENCL., CS, 30X24X8		DRAWN BY: PS	CREATED ON: 6/27/2014
		CHK'D BY: VR	DWG. NO. HWRHC302408_1
		SHEET 1 OF 9	REV. A



BLR FLAT PATTERN VIEW

FLAT SIDE VIEW

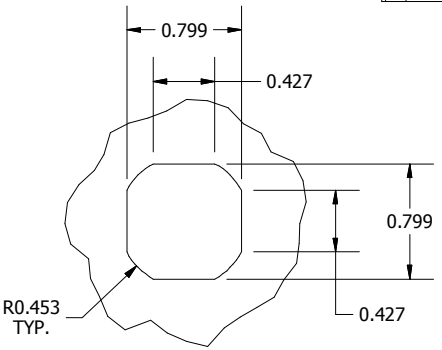
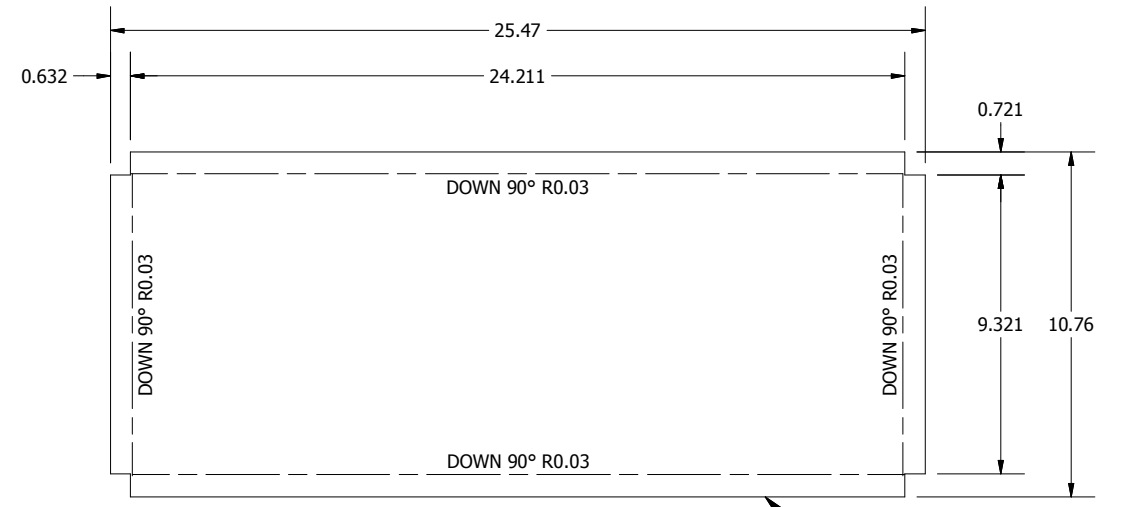
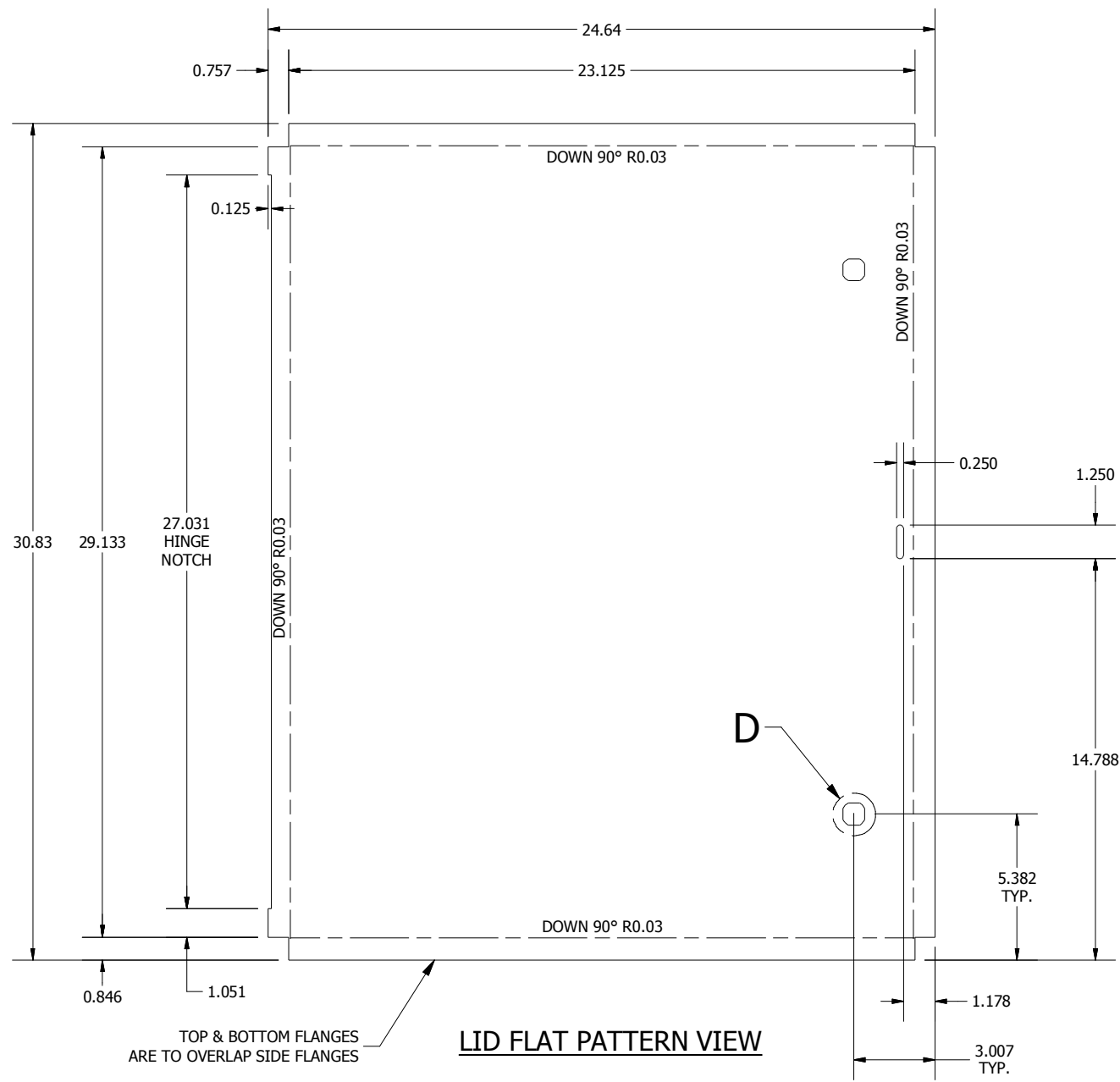
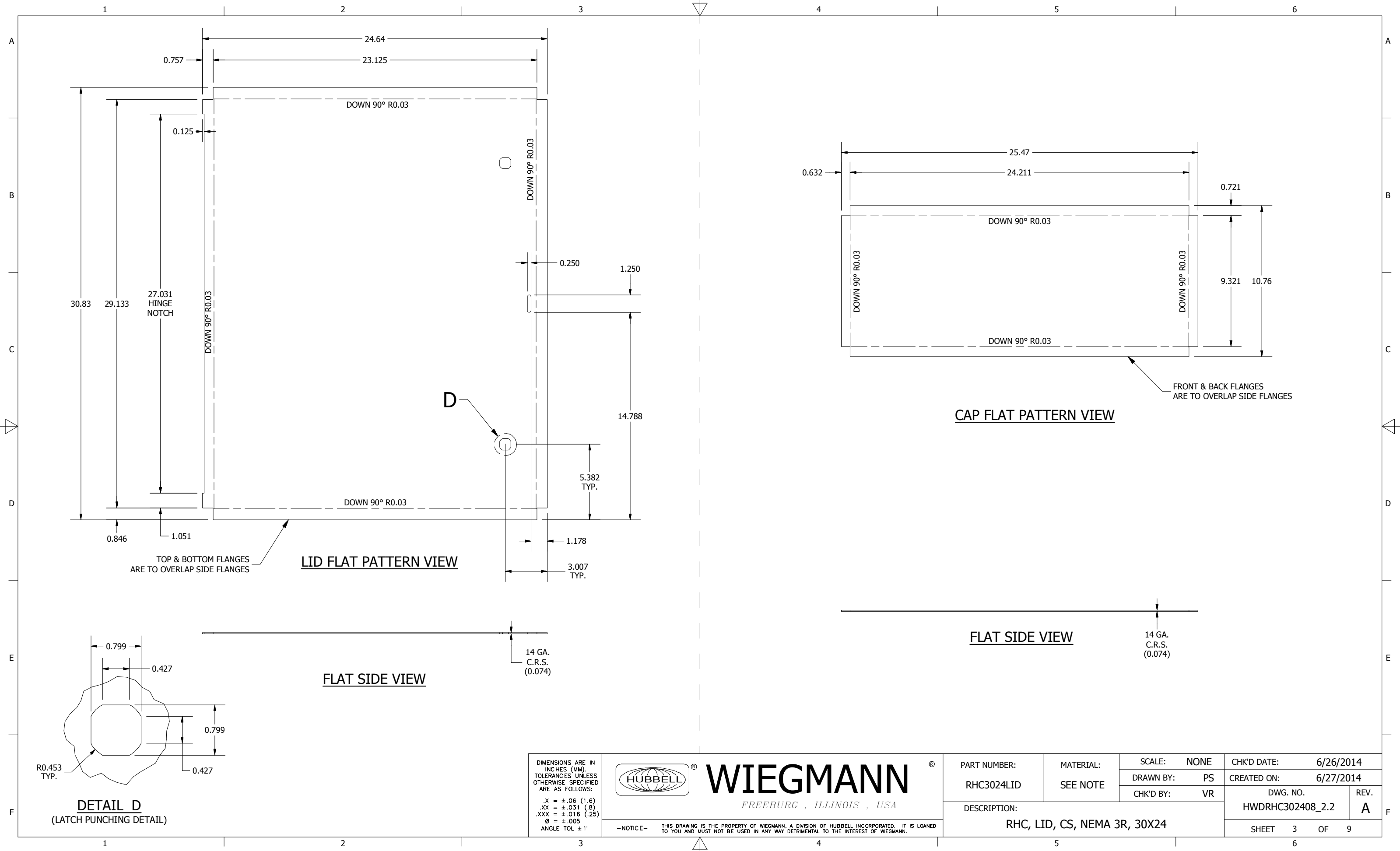
DIMENSIONS ARE IN INCHES (MM). TOLERANCES UNLESS OTHERWISE SPECIFIED ARE AS FOLLOWS:
 .X = ±.06 (1.6)
 .XX = ±.031 (.8)
 .XXX = ±.016 (.25)
 Ø = ±.005
 ANGLE TOL ±1'



WIEGMANN
 FREEBURG, ILLINOIS, USA

-NOTICE- THIS DRAWING IS THE PROPERTY OF WIEGMANN, A DIVISION OF HUBBELL INCORPORATED. IT IS LOANED TO YOU AND MUST NOT BE USED IN ANY WAY DETRIMENTAL TO THE INTEREST OF WIEGMANN.

PART NUMBER: RHC302408BLR	MATERIAL: SEE NOTE	SCALE: NONE	CHK'D DATE: 6/26/2014
		DRAWN BY: PS	CREATED ON: 6/27/2014
DESCRIPTION: RHC, BLR, MEDIUM, CS, 30X24X8		CHK'D BY: VR	DWG. NO. HWRHC302408_2.1
		REV. A	
SHEET 2 OF 9		6	

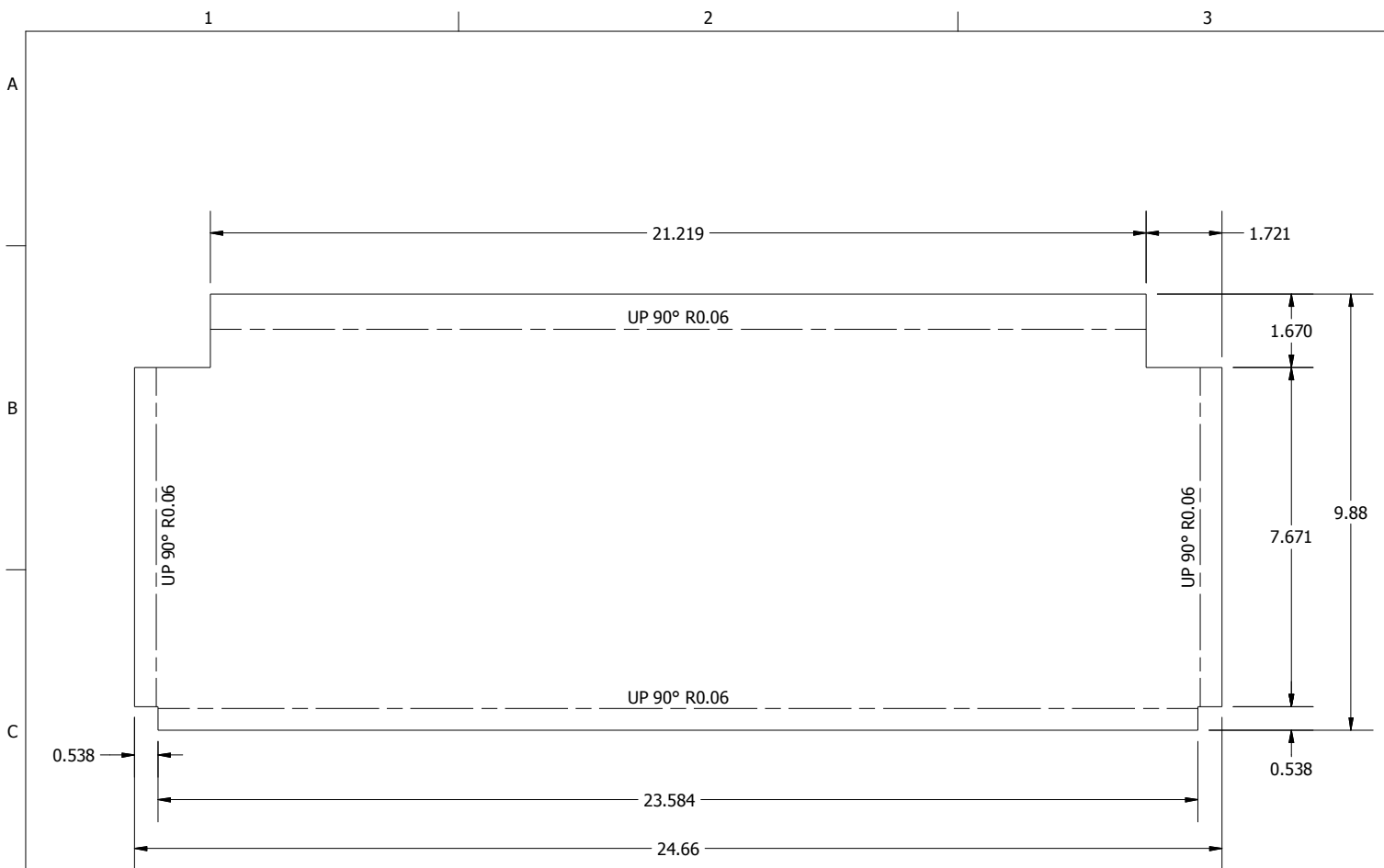


DIMENSIONS ARE IN INCHES (MM). TOLERANCES UNLESS OTHERWISE SPECIFIED ARE AS FOLLOWS:
 .X = ±.06 (1.6)
 .XX = ±.031 (.8)
 .XXX = ±.016 (.25)
 Ø = ±.005
 ANGLE TOL ±1°

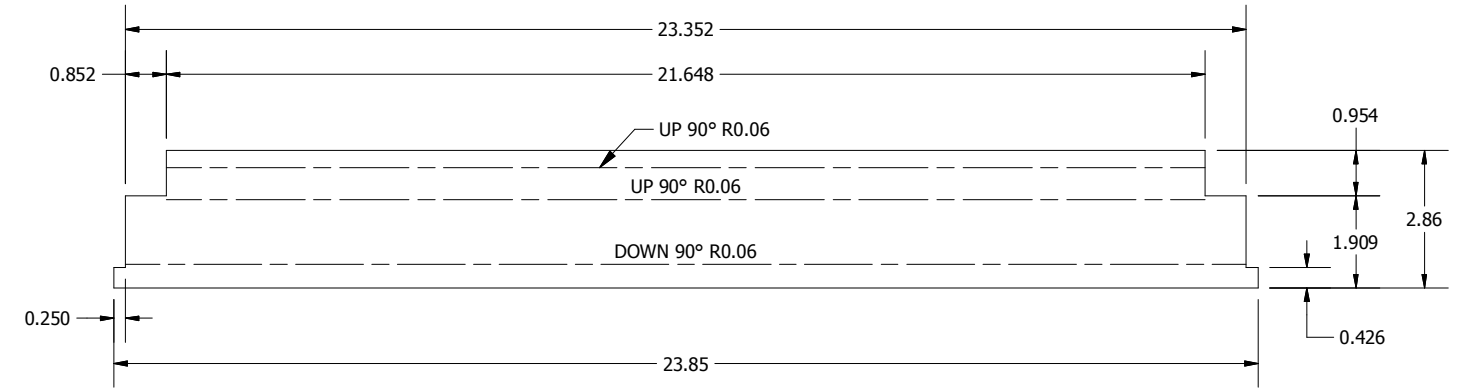
HUBBELL **WIEGMANN**
 FREEBURG, ILLINOIS, USA

—NOTICE— THIS DRAWING IS THE PROPERTY OF WIEGMANN, A DIVISION OF HUBBELL INCORPORATED. IT IS LOANED TO YOU AND MUST NOT BE USED IN ANY WAY DETRIMENTAL TO THE INTEREST OF WIEGMANN.

PART NUMBER: RHC3024LID	MATERIAL: SEE NOTE	SCALE: NONE	CHK'D DATE: 6/26/2014
DESCRIPTION: RHC, LID, CS, NEMA 3R, 30X24		DRAWN BY: PS	CREATED ON: 6/27/2014
		CHK'D BY: VR	DWG. NO. HWDRHC302408_2.2
			REV. A
		SHEET 3 OF 9	



BOTTOM ENDWALL FLAT PATTERN VIEW



TOP ENDWALL FLAT PATTERN VIEW



FLAT SIDE VIEW



FLAT SIDE VIEW

DIMENSIONS ARE IN INCHES (MM). TOLERANCES UNLESS OTHERWISE SPECIFIED ARE AS FOLLOWS:
 .X = ±.06 (1.6)
 .XX = ±.031 (.8)
 .XXX = ±.016 (.25)
 Ø = ±.005
 ANGLE TOL ± 1'



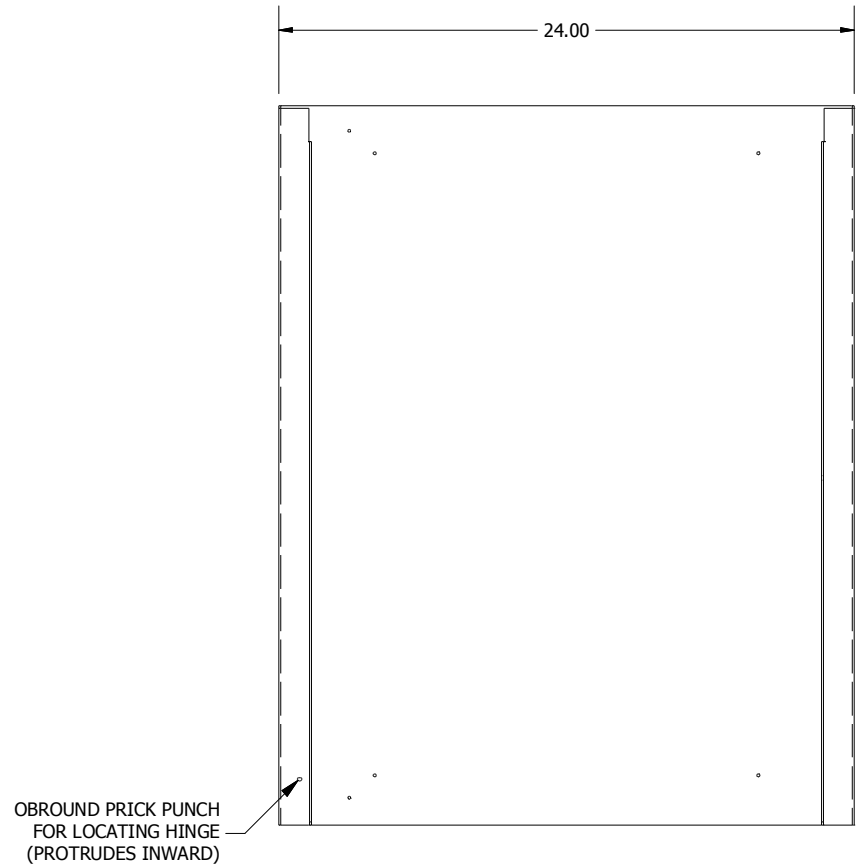
WIEGMANN
 FREEBURG, ILLINOIS, USA

—NOTICE— THIS DRAWING IS THE PROPERTY OF WIEGMANN, A DIVISION OF HUBBELL INCORPORATED. IT IS LOANED TO YOU AND MUST NOT BE USED IN ANY WAY DETRIMENTAL TO THE INTEREST OF WIEGMANN.

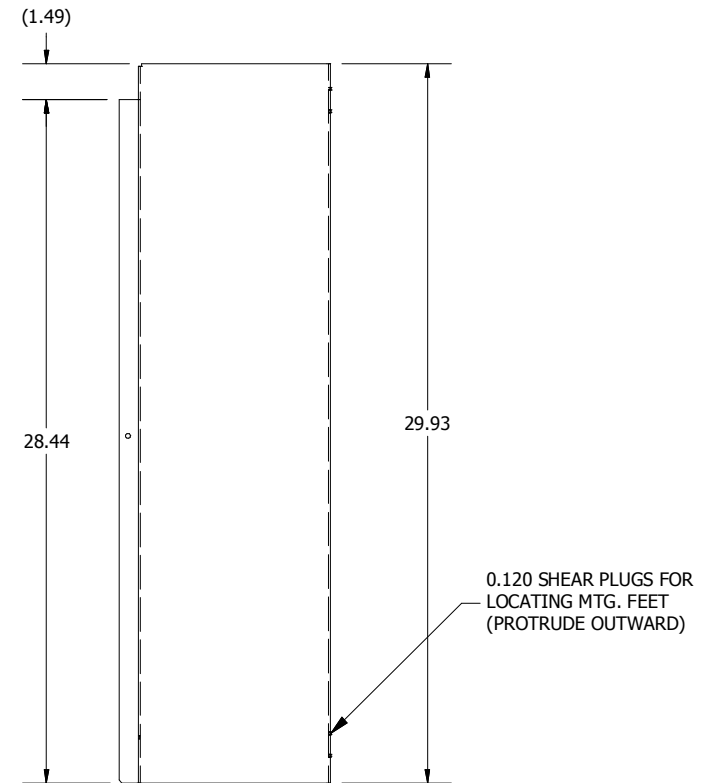
PART NUMBER: RHC2408BTM	MATERIAL: SEE NOTE	SCALE: NONE	CHK'D DATE: 6/26/2014
DESCRIPTION: RHC, BTM, CS, NEMA 3R, 24X8		DRAWN BY: PS	CREATED ON: 6/27/2014
		CHK'D BY: VR	DWG. NO. HWDRHC302408_2.3
		REV. A	
		SHEET 4 OF 9	

1 2 3 4 5 6

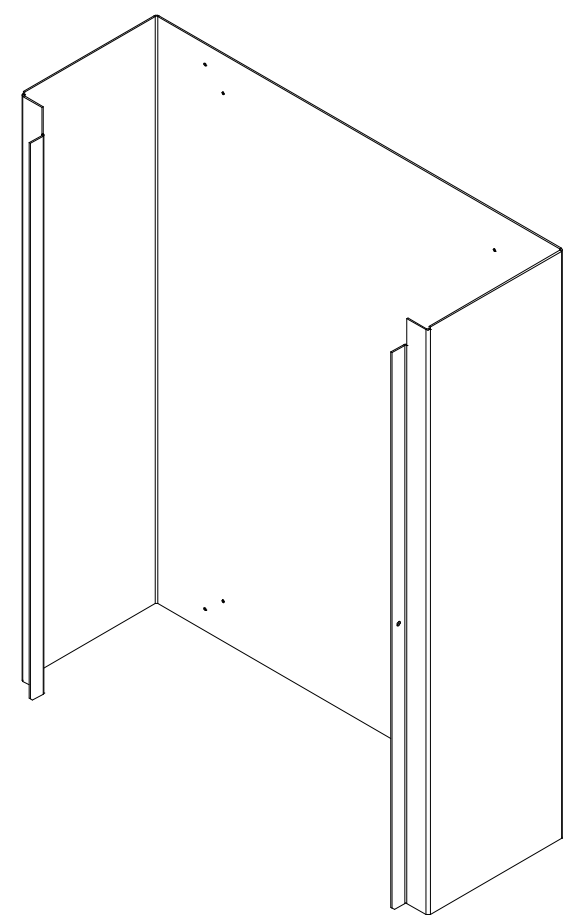
A B C D E F



BLR FRONT VIEW



SIDE VIEW



BOTTOM VIEW

DIMENSIONS ARE IN INCHES (MM). TOLERANCES UNLESS OTHERWISE SPECIFIED ARE AS FOLLOWS:
 .X = ±.06 (1.6)
 .XX = ±.031 (.8)
 .XXX = ±.016 (.25)
 Ø = ±.005
 ANGLE TOL ±1'

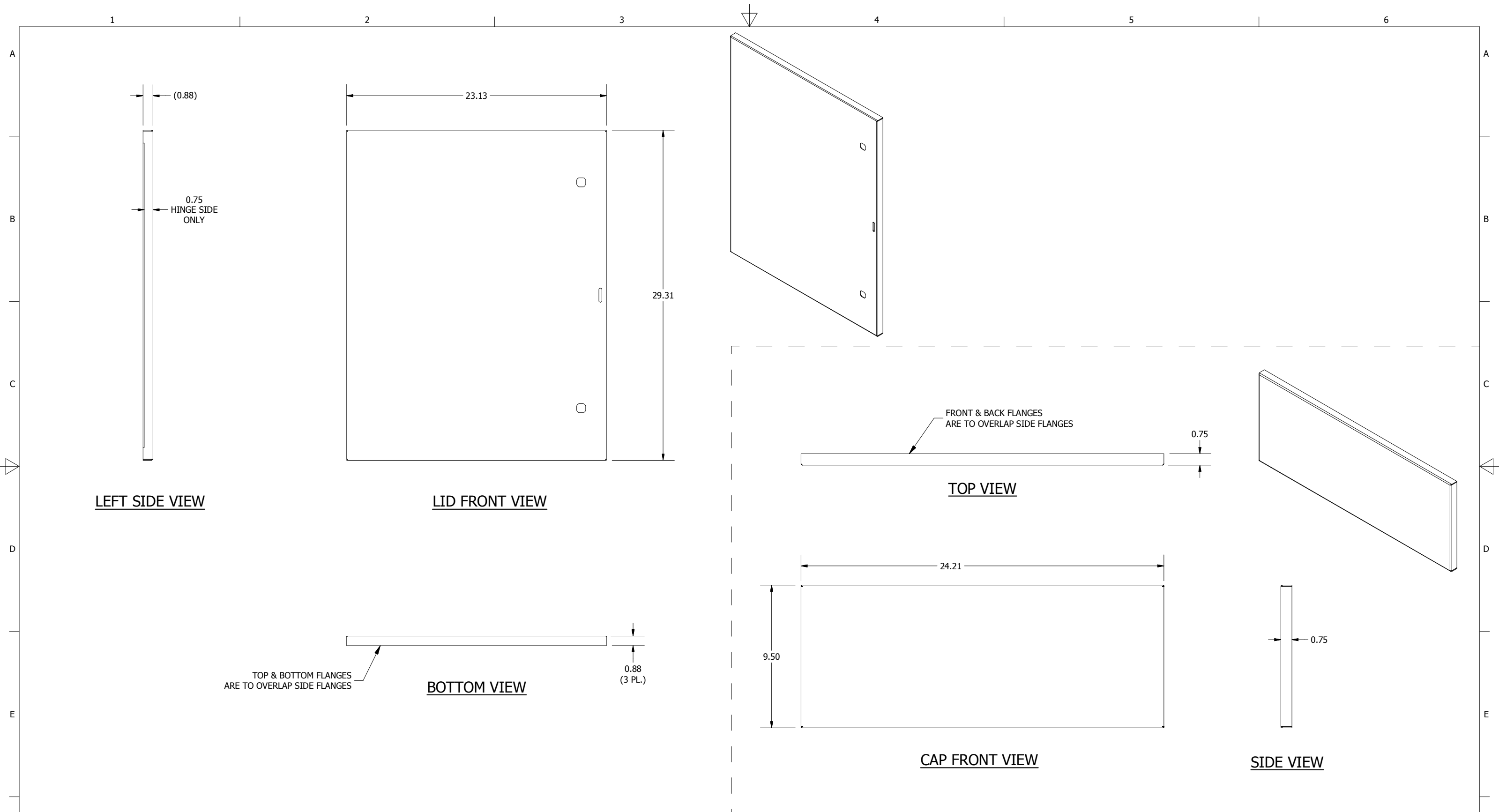


-NOTICE- THIS DRAWING IS THE PROPERTY OF WIEGMANN, A DIVISION OF HUBBELL INCORPORATED. IT IS LOANED TO YOU AND MUST NOT BE USED IN ANY WAY DETRIMENTAL TO THE INTEREST OF WIEGMANN.

PART NUMBER: RHC302408BLR	MATERIAL: SEE NOTE	SCALE: NONE	CHK'D DATE: 6/26/2014
		DRAWN BY: PS	CREATED ON: 6/27/2014
DESCRIPTION: RHC, BLR, MEDIUM, CS, 30X24X8		CHK'D BY: VR	DWG. NO. HWRHC302408_3.1
		REV. A	
		SHEET 5 OF 9	

1 2 3 4 5 6

F



LEFT SIDE VIEW

LID FRONT VIEW

TOP VIEW

CAP FRONT VIEW

BOTTOM VIEW

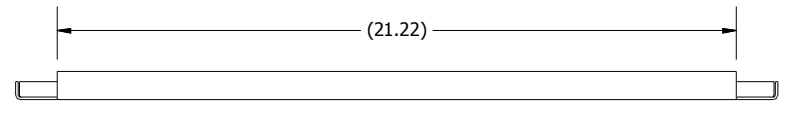
SIDE VIEW

DIMENSIONS ARE IN INCHES (MM). TOLERANCES UNLESS OTHERWISE SPECIFIED ARE AS FOLLOWS:
 .X = ±.06 (1.6)
 .XX = ±.031 (.8)
 .XXX = ±.016 (.25)
 Ø = ±.005
 ANGLE TOL ±1°

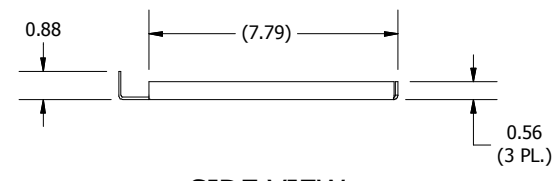


—NOTICE— THIS DRAWING IS THE PROPERTY OF WIEGMANN, A DIVISION OF HUBBELL INCORPORATED. IT IS LOANED TO YOU AND MUST NOT BE USED IN ANY WAY DETRIMENTAL TO THE INTEREST OF WIEGMANN.

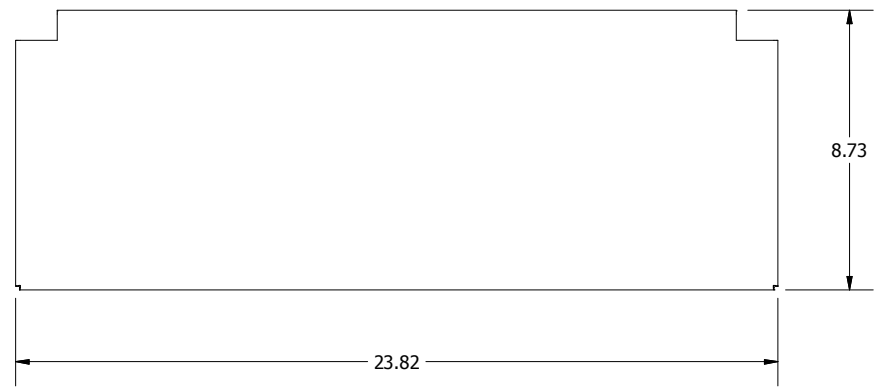
PART NUMBER: RHC3024LID	MATERIAL: SEE NOTE	SCALE: NONE	CHK'D DATE: 6/26/2014
DESCRIPTION: RHC, LID, CS, NEMA 3R, 30X24		DRAWN BY: PS	CREATED ON: 6/27/2014
		CHK'D BY: VR	DWG. NO. HWDRHC302408_3.2
		SHEET 6 OF 9	REV. A



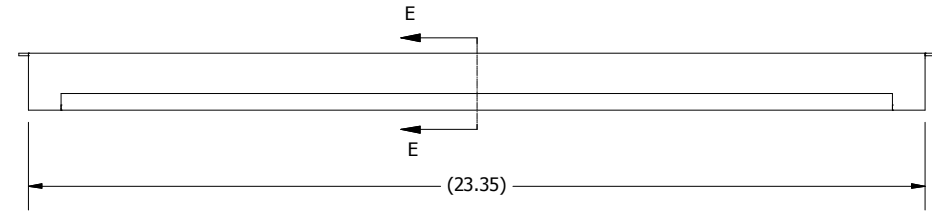
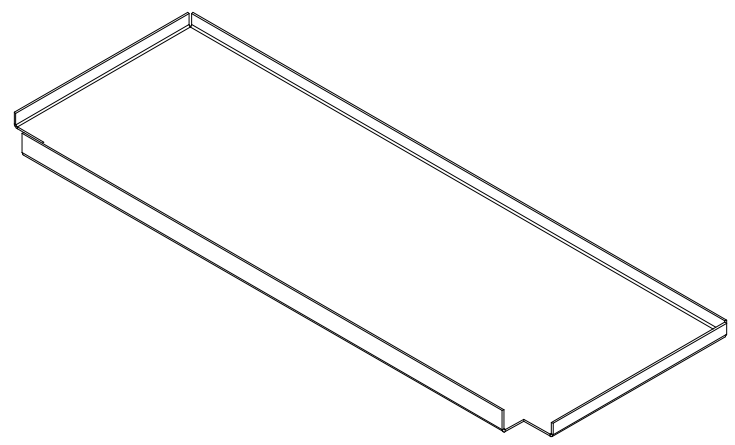
BOTTOM ENDWALL FRONT VIEW



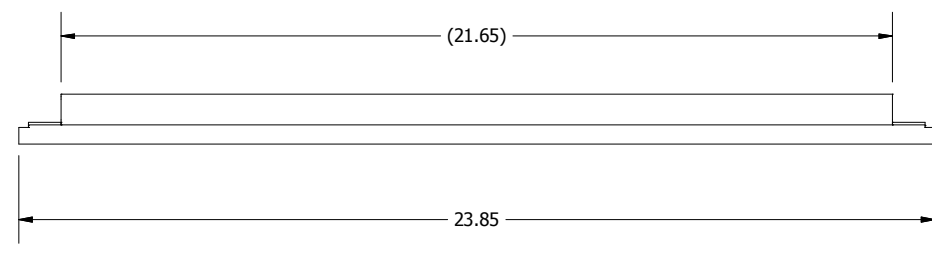
SIDE VIEW



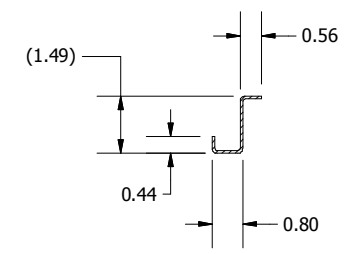
BOTTOM VIEW



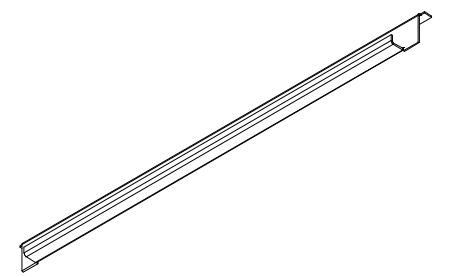
TOP ENDWALL FRONT VIEW



BOTTOM VIEW



SECTION E-E



DIMENSIONS ARE IN INCHES (MM). TOLERANCES UNLESS OTHERWISE SPECIFIED ARE AS FOLLOWS:
 .X = ±.06 (1.6)
 .XX = ±.031 (.8)
 .XXX = ±.016 (.25)
 Ø = ±.005
 ANGLE TOL ±1'



WIEGMANN
 FREEBURG, ILLINOIS, USA

—NOTICE— THIS DRAWING IS THE PROPERTY OF WIEGMANN, A DIVISION OF HUBBELL INCORPORATED. IT IS LOANED TO YOU AND MUST NOT BE USED IN ANY WAY DETRIMENTAL TO THE INTEREST OF WIEGMANN.

PART NUMBER:
RHC2408BTM

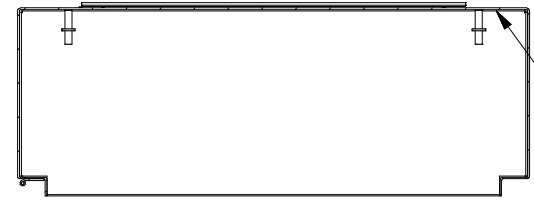
MATERIAL:
SEE NOTE

SCALE: NONE
 DRAWN BY: PS
 CHK'D BY: VR

CHK'D DATE: 6/26/2014
 CREATED ON: 6/27/2014

DESCRIPTION:
RHC, BTM, CS, NEMA 3R, 24X8

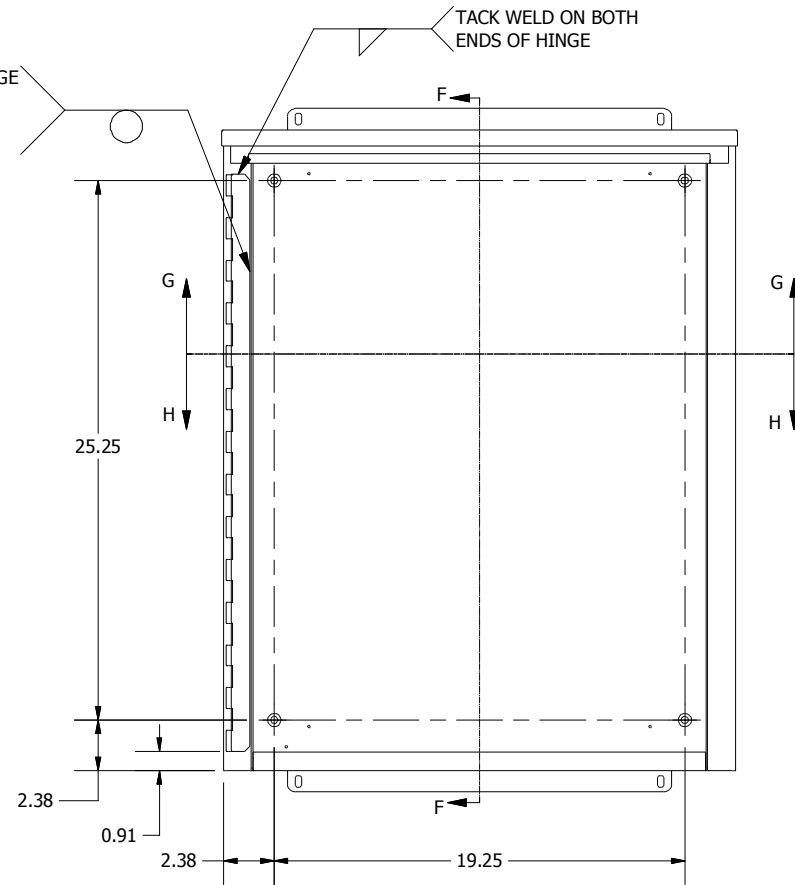
DWG. NO. HWDRHC302408_3.3
 REV. A
 SHEET 7 OF 9



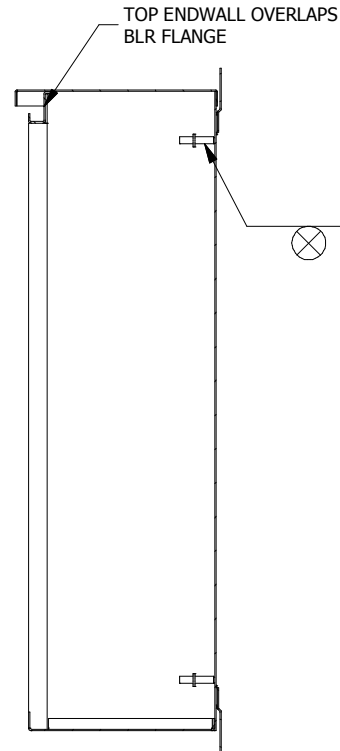
SECTION H-H

TACK WELD BOTTOM ENDWALL TO INSIDE OF BLR ON SIDES EVENLY & THROUGHOUT

SPOT WELD HINGE TO TUB FLANGE EVENLY & THROUGHOUT



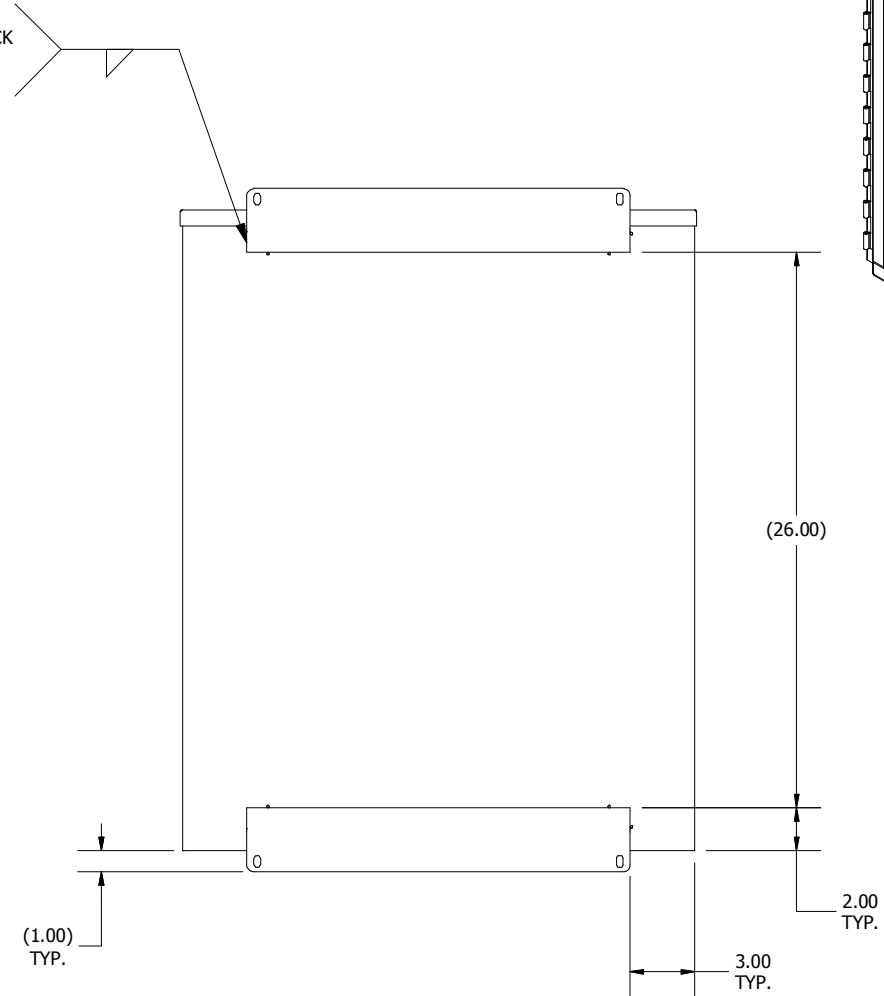
TUB WELD FRONT VIEW



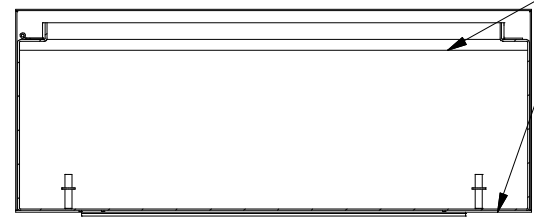
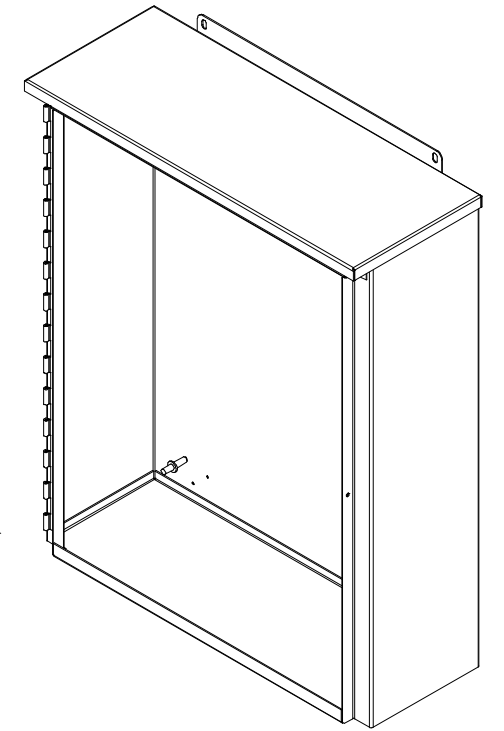
SECTION F-F

TACK WELD MTG. FOOT ON THREE SIDES TO BACK OF TUB EVENLY & THROUGHOUT (2 PL.)

CD WELD 3/8-16 COLLAR STUD (4 PL.)



REAR VIEW



SECTION G-G

TACK WELD CAP TO ALL BLR & TOP ENDWALL FLANGES EVENLY & THROUGHOUT

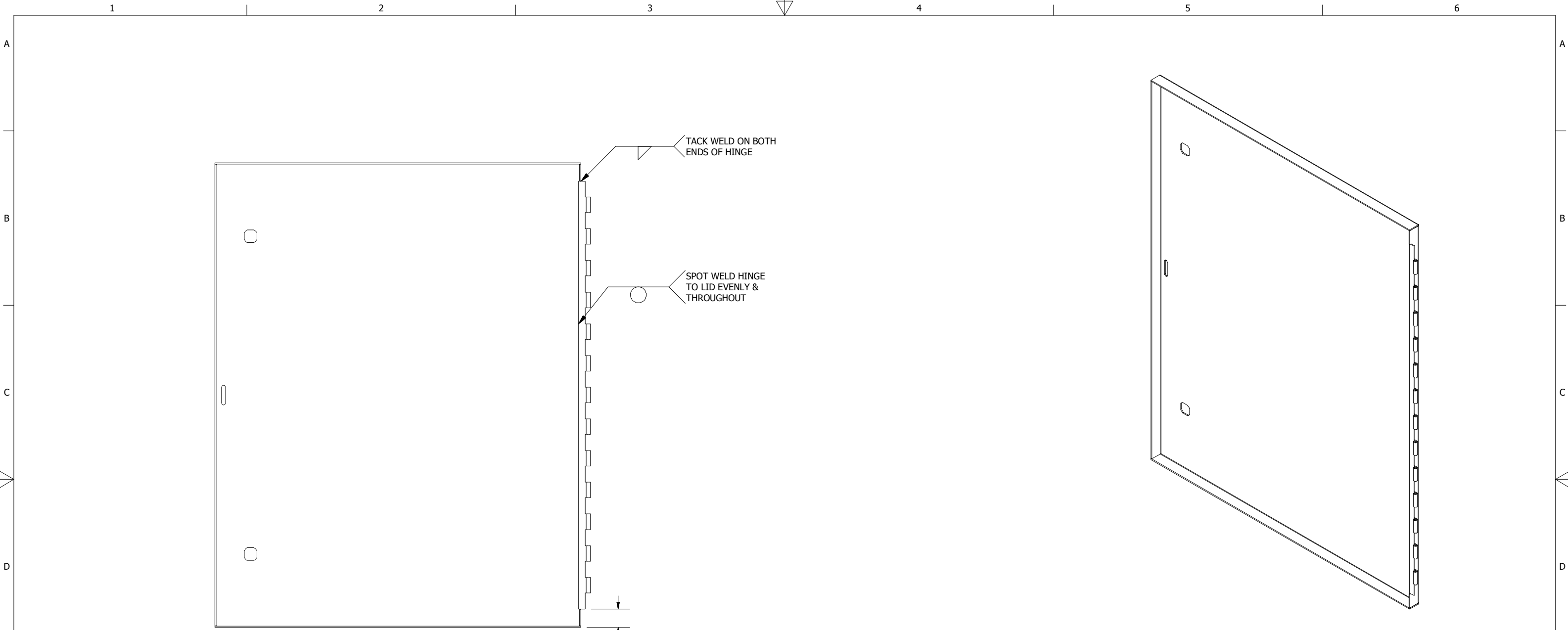
DIMENSIONS ARE IN INCHES (MM). TOLERANCES UNLESS OTHERWISE SPECIFIED ARE AS FOLLOWS:
 .X = ±.06 (1.6)
 .XX = ±.031 (.8)
 .XXX = ±.016 (.25)
 Ø = ±.005
 ANGLE TOL ±1°



WIEGMANN
 FREEBURG, ILLINOIS, USA

-NOTICE- THIS DRAWING IS THE PROPERTY OF WIEGMANN, A DIVISION OF HUBBELL INCORPORATED. IT IS LOANED TO YOU AND MUST NOT BE USED IN ANY WAY DETRIMENTAL TO THE INTEREST OF WIEGMANN.

PART NUMBER: RHC302408	MATERIAL: SEE NOTE	SCALE: NONE	CHK'D DATE: 6/26/2014
		DRAWN BY: PS	CREATED ON: 6/27/2014
DESCRIPTION: RHC, NEMA 3R ENCL., CS, 30X24X8		CHK'D BY: VR	DWG. NO. HWRHC302408_4.1
		REV. A	
		SHEET 8 OF 9	



LID WELD INSIDE VIEW

(1.16)

DIMENSIONS ARE IN INCHES (MM). TOLERANCES UNLESS OTHERWISE SPECIFIED ARE AS FOLLOWS:
 .X = ±.06 (1.6)
 .XX = ±.031 (.8)
 .XXX = ±.016 (.25)
 Ø = ±.005
 ANGLE TOL ± 1°



WIEGMANN
 FREEBURG, ILLINOIS, USA

-NOTICE- THIS DRAWING IS THE PROPERTY OF WIEGMANN, A DIVISION OF HUBBELL INCORPORATED. IT IS LOANED TO YOU AND MUST NOT BE USED IN ANY WAY DETRIMENTAL TO THE INTEREST OF WIEGMANN.

PART NUMBER:
 RHC302408

MATERIAL:
 SEE NOTE

SCALE: NONE
 DRAWN BY: PS
 CHK'D BY: VR

CHK'D DATE: 6/26/2014
 CREATED ON: 6/27/2014

DESCRIPTION:
 RHC, NEMA 3R ENCL., CS, 30X24X8

DWG. NO. HWDRHC302408_4.2
 REV. A
 SHEET 9 OF 9