

Wire Protection Products

Braided Sleeving

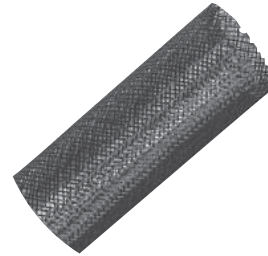
Available in handy mini spools or bulk reels!

Thomas & Betts braided wire protection sleeving is used to bundle and protect wires and cables from abrasion and excessive wear. Its flexible, lightweight, open weave construction installs easily over a variety of bundle diameters and shapes. The sleeving is resistant to chemicals, fungus, fuels, UV sunlight, and has an indefinite shelf life. It's easily cut with a hot knife, which seals the end, preventing fraying. Ends can be secured using Ty-Rap® cable ties.

Available in:

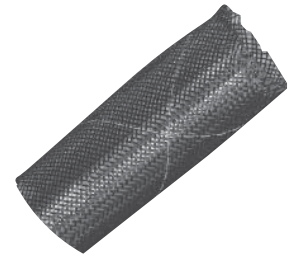
- Handy mini spools or bulk reels
- Eight sizes from 1/8 in. (3.18 mm) to 2-1/2 in. (63.5 mm) nominal I.D. size
- Solid or wraparound hook and loop braided expandable wire sleeving
- Meets UL94V-1
- Meets Federal Motor Vehicle Standard No. FMV SS 302

Types of Materials



Polyethylene Terephthalate (P.E.T.)

A black 0.010 in. (0.25mm) polyester monofilament material designed for indoor and outdoor applications. It's rated for continuous operating temp. -75°C to 125°C (-103°F to 257°F).



F – Flame Retardant Polyethylene Terephthalate (P.E.T.)

A 0.010 in. (0.25 mm) self-extinguishing polyester monofilament material that can be used indoors and outdoors. It's provided in black with white tracer for identification, and is rated for continuous operating temp. -75°C to 125°C (-103°F to 257°F). Meets UL 94V-1 Flammability Rating.

Catalogue Number System



Cat. No.	Nominal I.D.		Colour	Nominal Diameter Range		Reel Size	Std. Pkg.
	(in.)	(mm)		(in.)	(mm)		
Braided Expandable Wire Protection Sleeving							
S250PT-0	0.250	6.35	Black	0.125 to 0.375	3.18 to 9.53	M = 1000 ft. D = 500 ft. K = 250 ft. T = 200 ft. C = 100 ft. L = 50 ft.	1
S375PC-0	0.375	9.53		0.187 to 0.625	4.75 to 15.88		1

S = Braided Expandable Wire Sleeving

Materials

- P** = P.E.T. (Polyethylene Terephthalate)
- F** = Flame-retardant P.E.T.
- PW** = P.E.T. hook & loop wraparound sleeving
- FW** = Flame-retardant P.E.T. hook & loop wraparound sleeving

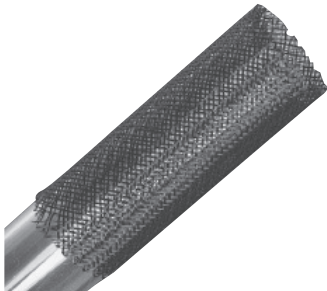
Nominal I.D. Equivalents

- 0.125** = 1/8 in.
- 0.250** = 1/4 in.
- 0.375** = 3/8 in.
- 0.500** = 1/2 in.
- 0.750** = 3/4 in.
- 1.250** = 1-1/4 in.
- 1.500** = 1-1/2 in.
- 1.750** = 1-3/4 in.
- 2.000** = 2 in.
- 2.500** = 2-1/2 in.

Wire Protection Products

Types of Materials

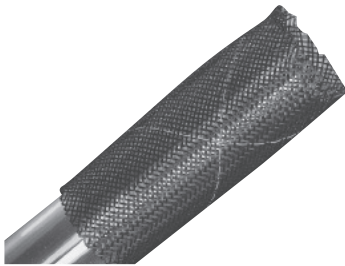
Braided Sleeving



Cat. No.	Nominal I.D.		Colour	Nominal Diameter Range		Spool Quantity	Std. Pkg.
	(in.)	(mm)		(in.)	(mm)		
P.E.T. Braided Expandable Wire Sleeving — Mini Spool							
S250PT-0	0.25	6.35	Black	0.13 to 0.38	3.18 to 9.53	200 ft. / 60.96 m	1
S375PC-0	0.38	9.53		0.19 to 0.63	4.75 to 15.88	125 ft. / 38.10 m	
S500PC-0	0.50	12.70		0.25 to 0.75	6.35 to 19.05	100 ft. / 30.48 m	
S750PC-0	0.75	19.05		0.50 to 1.25	12.70 to 31.75		
S1250PL-0	1.25	31.75		0.75 to 1.75	19.05 to 44.45	50 ft. / 15.24 m	

NOTE: Order by spool, not per foot.

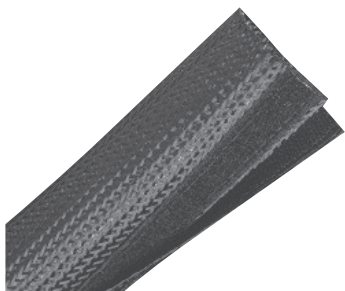
Safety first!



Cat. No.	Nominal I.D.		Colour	Nominal Diameter Range		Spool Quantity	Std. Pkg.
	(in.)	(mm)		(in.)	(mm)		
Flame Retardant Braided Expandable Wire Sleeving — Mini Spool							
S250FT-0	0.25	6.35	Black with White Tracer	0.13 to 0.38	3.18 to 9.53	200 ft. / 60.96 m	1
S500FC-0	0.50	12.70		0.25 to 0.75	6.35 to 19.05	100 ft. / 30.48 m	
S750FC-0	0.75	19.05		0.50 to 1.25	12.70 to 31.75		
S1250FL-0	1.25	31.75		0.75 to 1.75	19.05 to 44.45	50 ft. / 15.24 m	

NOTE: Order by spool, not per foot.

Enables for easy wrapping of existing wire harnesses and cables!



Cat. No.	Nominal I.D.		Colour	Nominal Diameter Range		Spool Quantity	Std. Pkg.
	(in.)	(mm)		(in.)	(mm)		
P.E.T. Hook and Loop, Wraparound Sleeving — Mini Spool							
S500PWL-0	0.50	12.70	Black	0.25 to 0.75	6.35 to 19.05	50 ft. / 15.24 m	1
S750PWL-0	0.75	19.05		0.50 to 1.25	12.70 to 31.75		
S1250PWL-0	1.25	31.75		0.75 to 1.75	19.05 to 44.45		
S2000PWL-0	2.00	50.80		1.50 to 3.50	38.10 to 88.90		

NOTE: Order by spool, not per foot.

Convenient for rework without disrupting existing connection!



- No tools required to close the sleeving
- Hook and loop material is made of 100% nylon



Cat. No.	Nominal I.D.		Colour	Nominal Diameter Range		Spool Quantity	Std. Pkg.
	(in.)	(mm)		(in.)	(mm)		
Flame Retardant Hook and Loop, Wraparound Sleeving — Mini Spool							
S500FWL-0	0.50	12.70	Black with White Tracer	0.25 to 0.75	6.35 to 19.05	50 ft. / 15.24 m	1
S750FWL-0	0.75	19.05		0.50 to 1.25	12.70 to 31.75		
S1250FWL-0	1.25	31.75		0.75 to 1.75	19.05 to 44.45		
S2000FWL-0	2.00	50.80		1.50 to 3.50	38.10 to 88.90		

NOTE: Order by spool, not per foot.

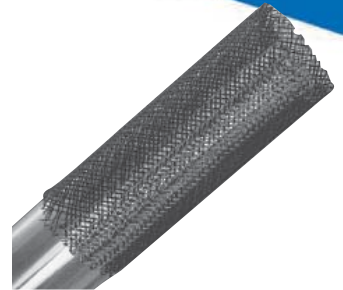
Wire Protection Products

Buy in bulk and save! **Braided Sleeving**



Cat. No.	Nominal I.D.		Colour	Nominal Diameter Range		Reel Quantity	Std. Pkg.
	(in.)	(mm)		(in.)	(mm)		
P.E.T. Braided Expandable Wire Sleeving — Bulk Reel							
S125PM-0	0.125	3.18	Black	0.09 to 0.250	2.39 to 6.35	1,000 ft. / 304.80 m	1
S250PM-0	0.25	6.35		0.125 to 0.375	3.18 to 9.53		
S375PD-0	0.38	9.53		0.19 to 0.63	4.75 to 15.88	500 ft. / 152.40 m	
S500PD-0	0.50	12.70		0.25 to 0.75	6.35 to 19.05		
S750PK-0	0.75	19.05		0.50 to 1.25	12.70 to 31.75	250 ft. / 76.20 m	
S1250PK-0	1.25	31.75		0.75 to 1.75	19.05 to 44.45		
S1500PT-0	1.50	38.10		1.00 to 2.50	25.40 to 63.50	200 ft. / 60.96 m	
S1750PT-0	1.75	44.45		0.125 to 0.375	31.75 to 59.85		
S2000PT-0	2.00	50.80		1.50 to 3.50	38.10 to 88.90		
S2500PT-0	2.50	63.50		1.75 to 4.50	44.45 to 114.30		

NOTE: Order by spool, not per foot.



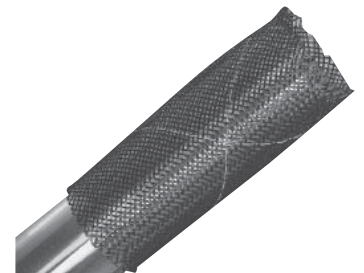
Choose from a variety of reel sizes!



Cat. No.	Nominal I.D.		Colour	Nominal Diameter Range		Reel Quantity	Std. Pkg.
	(in.)	(mm)		(in.)	(mm)		
Flame Retardant Braided Expandable Wire Sleeving — Bulk Reel							
S125FM-0	0.125	3.18	Black with White Tracer	0.09 to 0.250	2.39 to 6.35	1,000 ft. / 304.80 m	1
S250FM-0	0.25	6.35		0.125 to 0.375	3.18 to 9.53		
S375FD-0	0.38	9.53		0.19 to 0.63	4.75 to 15.88	500 ft. / 152.40 m	
S500FD-0	0.50	12.70		0.25 to 0.75	6.35 to 19.05		
S750FK-0	0.75	19.05	0.50 to 1.25	12.70 to 31.75	250 ft. / 76.20 m		
S750FK-9	0.75	19.05	White with Black Tracer	0.50 to 1.25		12.70 to 31.75	
S1250FK-0	1.25	31.75	Black with White Tracer	0.75 to 1.75	19.05 to 44.45	200 ft. / 60.96 m	
S1750FT-0	1.75	44.45		0.125 to 0.375	31.75 to 59.85		
S1750FT-9	1.75	44.45	White with Black Tracer	0.125 to 0.375	31.75 to 59.85		
S2000FT-0	2.00	50.80	Black with White Tracer	1.50 to 3.50	38.10 to 88.90		
S2500FT-0	2.50	63.50		1.75 to 4.50	44.45 to 114.30		

NOTE: Order by spool, not per foot.

For other colours, lengths, sizes and materials, please Contact your Regional Sales Office.



The right tool for the job!



Cat. No.	Description	Std. Pkg.
Sleeving End Cutter/Sealer Tools		
WTBM	Benchmark End Cutter/Sealer Tool, 110V AC	1

It's recommended that the sleeving be cut with a hot knife for a straight cut and to seal the ends, which prevents fraying.

