

# Accessories

A

## Trust Thomas & Betts for all your wiring accessories.

**Accessories include:**

- Divider walls, enabling multiple channels to be created within a duct channel
- Universal mounting clips that secure channels and wires
- Corner strips that keep corners rigid at tee junctions when used for control panel applications
- Joining strips to unite sections of duct and keep the wall rigid
- Plastic rivets for securing ducts quickly and easily

= space for colour identifier:

- G = Grey

W = White

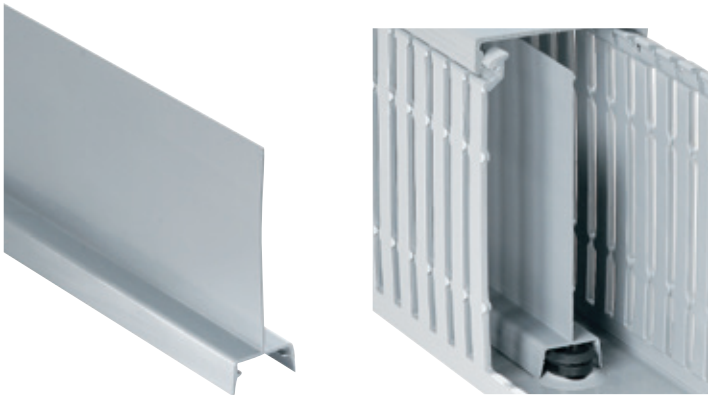
B = Black

I = Intrinsic blue
- 

### Divider wall

**Create multiple channels inside wiring ducts.**

- Separates high and low voltage to reduce shortages and interference
- Mount inside any Ty-Duct PVC wiring duct using universal mounting clips
- Score lines enable sections to be removed
- Solid and wide slotted style



Cat. no.	Description	Length (ft.)	Std. ctn. qty
TY1D[ ][ ]6	1" High wall divider	6	120
TY1.5D[ ][ ]6	1.5" High wall divider	6	120
TY2D[ ][ ]6	2" High wall divider	6	120
TY3D[ ][ ]6	3" High wall divider	6	120
TY4D[ ][ ]6	4" High wall divider	6	120
TY5D[ ][ ]6	5" High wall divider	6	120

+ Catalogue number must be completed by adding suffix SP for solid or WP for wide slot.  
Example: TY2DSPG6 is a 2" high solid wall grey divider.

### Universal mounting clips

**One size fits all.**

- Added before or after the duct is in place, without additional hardware
- Twists into place — holds securely
- Installs easily using a screwdriver
- Accommodates up to 40 lb. cable ties
- Black polycarbonate construction



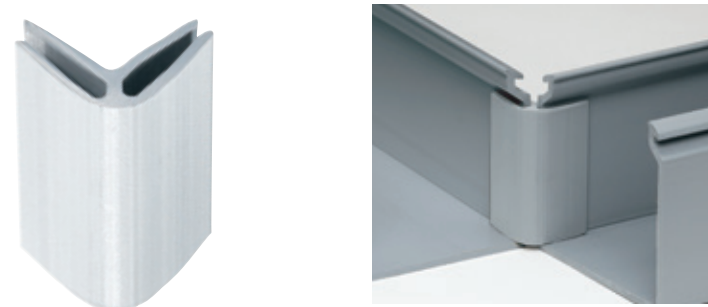
Cat. no.	Description	Qty
UMC	Universal fastener mount	100 pk

# Accessories

## Corner strips

Install smooth round corners on your wiring duct.

- Constructed of rigid PVC
- One-piece design makes installation a snap
- Works with any Ty-Duct wiring duct
- Select from a variety of sizes



Cat. no.	Description	Length (ft.)	Std. ctn. qty
TYCS[ _ ]6	Corner strip	6	120

+ Catalogue number must be completed by adding suffix G for grey, W for white, I for intrinsic blue, B for black. Example: TYCSG6 is a grey corner strip.

## Joining strips

Join duct sections easily.

- Slides on duct
- Constructed of rigid PVC
- One-piece design makes installation easy
- Works with any Ty-Duct wiring duct



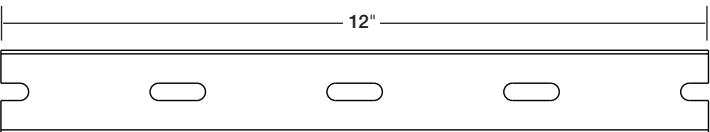
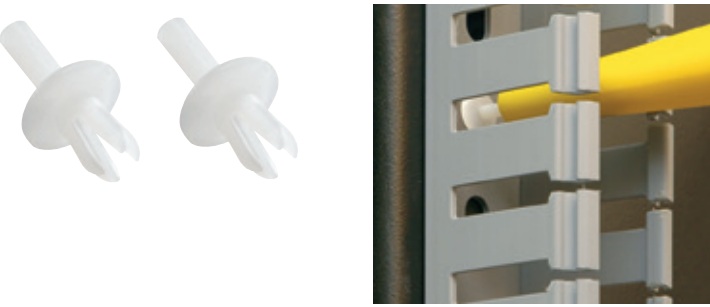
Cat. no.	Description	Length (ft.)	Std. ctn. qty
TYJS[ _ ]6	Joining strip	6	120

+ Catalogue number must be completed by adding suffix G for grey, W for white, I for intrinsic blue, B for black.  
Example: TYJSG6 is a grey joining strip.

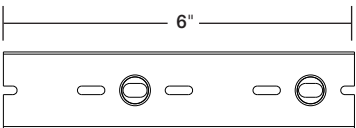
## Plastic rivets

Plastic rivets make mounting ducts easy.

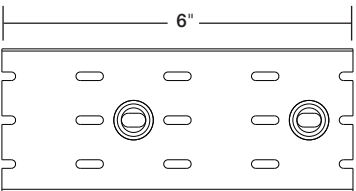
- Fast installation
- Durable and economical
- One size



Minimum mounting rivet distance for ducts of 0.75" and 1" wide.



Minimum mounting rivet distance for ducts 1.5" wide.



Minimum mounting rivet distance for ducts greater than 1.5" wide.  
Installed top and bottom.

Cat. no.	Description	Qty
08200C	3/16" Plastic rivet	100 pk

## Wire retainer

**Holds wires in place for faster, easier installation and routing.**

- One-size-and-colour-fits-all
- Comes in grey and clear plastic to blend with any duct colour
- Size is 2.5"L and 0.281" x 0.18" square

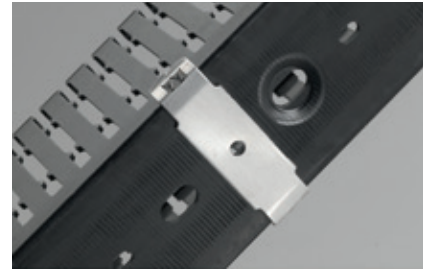


Cat. no.	Description	Qty.
TYWRC	Wire retainer, clear	100
TYWRG	Wire retainer, grey	100

## Mounting clips

**Ideal for high-temperature environments.**

- Speeds duct mounting
- Enables duct removal
- Provides a stand-off between panel and duct to prevent direct heat transfer — ideal for high temperature environments



Cat. no.	Width (in.)	Std. ctn. qty.
TY1MC	1	100
TY15MC	1.5	100
TY2MC	2	100
TY3MC	3	100

All are 0.75" D x 0.35" H and made of Type 316 stainless steel.