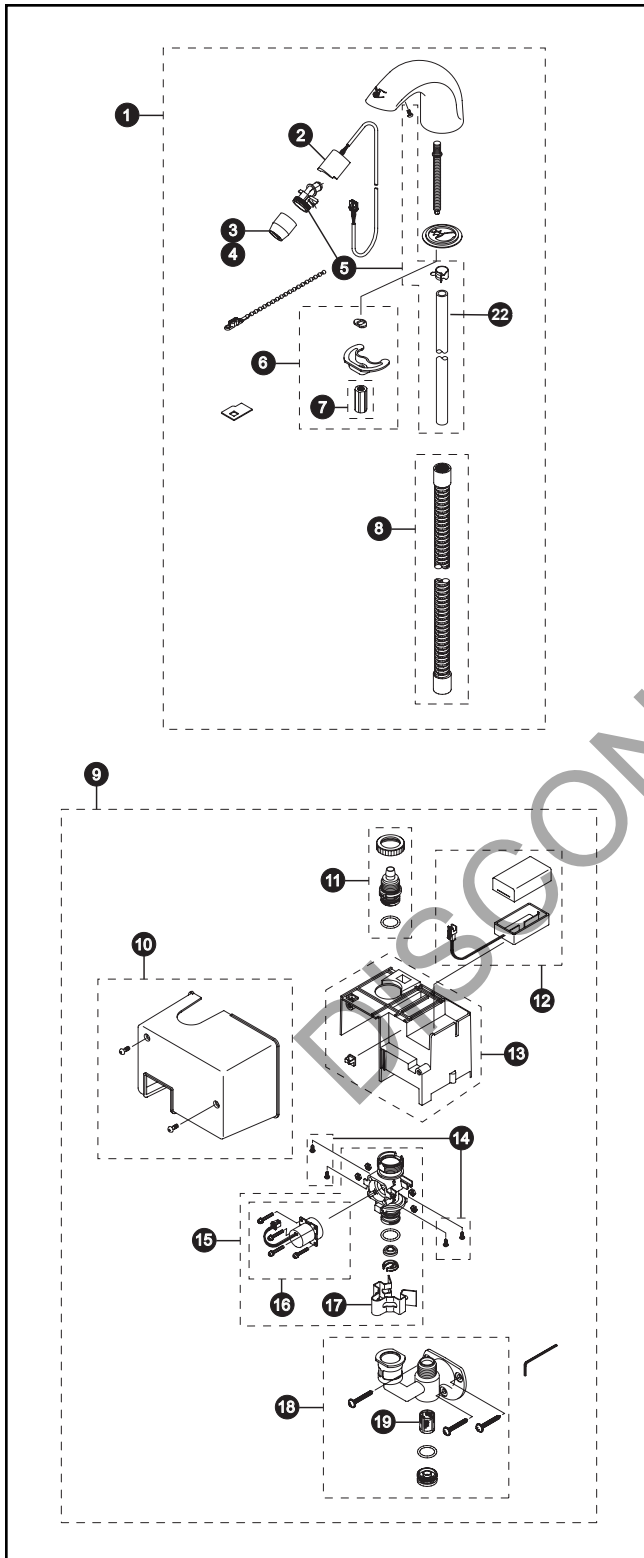


TEL3DSC-60
 TEL70AV100 (Spout)
 TN78-9V160 (Control Box)

**Sensor Faucet, Standard Spout
 Battery Powered (3V, DC)
 Single Supply**



| Item | Part | Description |
|------|-------------|--|
| 1 | TEL70AV100 | Spout Assembly |
| 2 | TH559EDV405 | Sensor |
| 3 | TH559EDV401 | Nozzle Assembly Set (Aerator Flow Type) |
| 4 | TH559EDV432 | Nozzle Assembly Set (Laminar Flow Type) |
| 5 | TH559EDV400 | Nozzle Bushing Set |
| 6 | TH559EDV402 | Spout Mounting Kit |
| 7 | TH559EDV403 | Spout Nuts (Gooseneck and Regular)(5 pieces) |
| 8 | TH559EDV404 | Flexible Tube (Regular Spout) |
| 9 | TN78-9V160 | Control Box Assembly |
| 10 | TH559EDV422 | Control Cover |
| 11 | TH559EDV420 | Bushing Assembly |
| 12 | TH559EDV421 | Battery Case |
| 13 | TH559EDV419 | Single Battery Control Unit 60 sec. |
| 14 | TH559EDV416 | Screws (10 Pieces) |
| 15 | TH559EDV412 | Valve Assembly Unit |
| 16 | TH559EDV413 | Solenoid and Diaphragm Assembly |
| 17 | TH559EDV255 | Metal Spring Clip |
| 18 | TH559EDV415 | Mounting Bracket Set |
| 19 | TH559EDV256 | Metal Strainer Screen |
| 20 | TN71V100 | Cover Plate - 4". Use TN71V100R." |
| 21 | 71244T8CC | Cover Plate - 8" |
| 22 | THP4473 | Hose |

Product Number Explanations

- Faucet**
 (T) Fitting
 (E) Electronic
 (L) Lavatory
 (3) Single Supply
 (D) DC Type
 (S) Standard Spout
 (C) Chrome Finish
 (60) 60 Second