

STANLEY® FATMAX® OPEN MOUTH TOOL BAGS



- Ideal for carrying hand tools and other medium to small-size items.
- Made of durable 600 x 600 denier polyester fabric.
- Rigid, water-proof plastic bottom keeps tools dry and protected from wet surfaces.
- Reinforced handle area enables durability even with extra heavy loads.
- Central zipper allows for quick access and visibility to contents when opened.
- Multiple external pockets for organization.



Product #	Weight	Length	Width	Height
97-489	3.08 lbs (1.40 kg)	16-1/4 in (412 mm)	9-1/4 in (235 mm)	11 in (279 mm)
518150M	3.19 lbs (1.45 kg)	19-1/4 in (489 mm)	10-3/8 in (264 mm)	9-7/8 in (251 mm)

STANLEY® OPEN MOUTH TOOL BAG

- Hardwearing, strong and durable.
- Made of durable 600 x 600 denier polyester fabric.
- Free-standing open mouth.
- Non-collapsible enables easy access.
- Multiple internal and external pockets.
- Adjustable shoulder strap.
- Strong reinforced plastic base.
- Covered front pocket.
- Tools and accessories not included.



Product #	Length	Width	Height	Color
97-484	16-1/4 in (412 mm)	9-1/4 in (235 mm)	11 in (279 mm)	Green

STANLEY® FATMAX® OPEN TOTE



- Open bag for quick access to contents.
- Made of durable 600 x 600 denier polyester fabric.
- Rigid, water-proof plastic bottom keeps tools dry and protected from wet surfaces.
- Durable ballistic nylon covered compartment for saw with adjustable Velcro strap.
- Rubber-gripped steel handle for quick transport.
- Ideal for hand tools and other small items commonly used by electricians, plumbers and woodworkers.
- Multiple compartments, saw pocket and level holder for organization.
- Steel holder for measure tape.



Product #	Weight	Length	Width	Height
518160M	4.43 lbs (2 kg)	18-7/8 in (479 mm)	10-1/4 in (260 mm)	13-3/4 in (349 mm)



STANLEY® FATMAX® TECHNICIAN TOOL BAG



- Open structure with rigid walls.
- Made of durable 600 x 600 denier polyester fabric.
- Removable rubber grip handle and padded shoulder strap provide easy access and extra comfort.
- Ideal for hand tools and other small items commonly used by electricians, plumbers and technicians.
- Multiple easy access pockets and loops.
- Rigid, water proof plastic bottom.
- Steel holder for measure tape.
- Covered compartment with drill bit holders inside.
- Steel holder for electrical tape.



Product #	Weight	Length	Width	Height
511150M	3.76 lbs (1.71 kg)	12-1/2 in (318 mm)	12-1/2 in (318 mm)	15-3/4 in (399 mm)

STANLEY® TOOL BAG

- Made of durable 600 x 600 denier polyester fabric that is hardwearing, strong and durable.
- Multiple internal and external pockets for organization.
- Covered front pocket for secure storage of small parts.



Product #	Length	Width	Height
STST70574	11-7/8 in (302 mm)	5-1/8 in (130 mm)	9-7/8 in (250 mm)

STANLEY® FATMAX® TOOL BACKPACK



- Tools backpack for transporting and storing tools: leaves your hands free.
- Made of durable 600 x 600 denier polyester fabric.
- Removable divider with tool holders - easily detaches and spreads out for full visibility of tool assortment.
- Waterproof plastic bottom - helps protect against moisture and dirt.
- Rigid form keeps tool bag stable.
- Padded back and ergonomic shoulder straps for convenient carriage.
- Large inner compartment for power tools or laptop.
- Front compartment for quick access needs; loops provide additional fastening options.
- Dual zipper closure enables opening from every end.



Product #	Storage Capacity	Length	Width	Height
514195M	42 gallons	13-3/4 in (350 mm)	10-3/5 in (270 mm)	18-1/9 in (460 mm)

STANLEY® FATMAX® STRUCTURAL FOAM TOOL BOXES



- Extra heavy-duty, professional tool box.
- Water seal makes tool box water resistant.
- Ideal for carrying power tools, hand tools and medium-size to large items.
- Ergonomic hand lifting recesses incorporated in the body for carrying heavy loads.
- Portable tote tray – 3/4 length design to allow storage of large tools.
- Integrated V-grooves with ruler on top of lid holds materials such as lumber and pipes in place for cutting.
- Large metal rust proof latches with padlock eye.



Product #	Storage Capacity	Weight	Length	Width	Height
023001W	6 gallons	7.00 lbs (3.2 kg)	22-3/4 in (578 mm)	11-3/4 in (298 mm)	10-1/2 in (267 mm)
028001L	9 gallons	10.00 lbs (4.5 kg)	28 in (711 mm)	12-1/4 in (311 mm)	11-1/2 in (292 mm)



STANLEY® FATMAX® METAL/PLASTIC TOOL BOXES

- Tough material combination and embossed logo branding - tough resin combined with metal and long-lasting branding.
- Tall tool box with a vertical storage unit for organization and easy access.
- Long metal hinge to carry the heavy loads.
- Large metal latches – heavy-duty, strong, rustproof.
- Portable tray for hand tools and small parts.
- Holes ready for inserting a lock for security of your tools.
- Integrated V-grooves on top lid for any onsite sawing and adjusting needs.
- Portable tote tray – 3/4 length design to allow storage of large tools.



Product #	Storage Capacity	Weight	Length	Width	Height	Compartments
023180R	9 gallons	7.70 lbs (3.49 kg)	23 in (584 mm)	11-1/2 in (292 mm)	11-7/16 in (291 mm)	2
026180R	10.3 gallons	8.80 lbs (4.0 kg)	26 in (660 mm)	11-1/2 in (292 mm)	11-7/16 in (291 mm)	2
FMST20061	4.4 gallons	5.28 lbs (2.39kg)	19-5/8 in (498 mm)	8-11/16 in (220 mm)	11-1/8 in (282 mm)	2

STANLEY® FATMAX® METAL/PLASTIC TOOL BOX

- 20" metal/plastic tool box with removable tray.
- Deep 4" drawer with ball bearing slides for small parts organization or power tool storage.
- Large heavy-duty latches to secure contents.
- Extra wide soft grip handle for easy lifting.



Product #	Length	Width	Height
FMST20261	21-1/4 in (540 mm)	10-8/9 in (277 mm)	13 in (330 mm)

STANLEY® SERIES 2000 TOOL BOXES WITH PLASTIC LATCH

- Two lid organizers for small parts storage – accessible without opening the tool box.
- Built-in pad lock eye for small locks helps keep contents secure.
- Tote tray.
- Tools and accessories not included.



Product #	Storage Capacity	Weight	Length	Width	Height	Compartments
STST13011	1.1 gallons	1.10 lbs (0.499 kg)	12-1/2 in (318 mm)	7-1/4 in (184 mm)	5-1/4 in (133 mm)	4
016011R	2.1 gallons	2.50 lbs (1.15 kg)	15-3/4 in (401 mm)	7-1/2 in (191 mm)	7-1/8 in (181 mm)	4



STANLEY® BASIC TOOL BOXES

- Polypropylene resin tool box.
- Single center latch allows for one-handed open and close.
- Small parts storage compartments on lid.



Product #	Length	Width	Height	Compartments	Color
STST16410	15-2/5 in (391 mm)	8-3/5 in (218 mm)	6-1/3 in (161 mm)	3	Black/Yellow
STST19410	18-8/9 in (480 mm)	10-1/4 in (260 mm)	9 in (229 mm)	3	Black/Yellow
STST24410	23-1/3 in (593 mm)	11 in (279 mm)	10-3/20 in (258 mm)	3	Black/Yellow

STANLEY® ONE-TOUCH TOOL BOX WITH POCKETS

- Secure single latch feature for one-handed open and close.
- Polypropylene resin construction for maximum durability.
- Detachable side pockets for accessibility and additional storage space.
- Removable tray for small tools and parts.
- Water seal for protection against weather and dust.
- 2 x 4 groove built into lid.



Product #	Length	Width	Height	Compartments	Color
STST24081	23-3/5 in (599 mm)	11-1/5 in (285 mm)	11-1/5 in (285 mm)	3	Black/Gray

STANLEY® 19" TOOL BOX WITH 12-1/2" TOOL BOX

- 19" spacious tool box.
- 2 top organizers for small parts storage - accessible without opening the tool box.
- Pad lock eyes.
- Nickel-plated metal latches.
- Tote tray.
- With 12.5" tool box inside with top organizer for small parts storage, includes tray inside.



Product #	Capacity for 19" tool box	Capacity for 12.5" tool box	Weight	Length	Width	Height	Color
060752C	3.7 gallons	1.06 gallons	5.07 lbs (2.3 kg)	19-1/4 in (489 mm)	10-1/4 in (260 mm)	9-3/4 in (248 mm)	Black/Yellow

STANLEY® PROFESSIONAL TOOL BOXES

- Extra-large capacity tool box with removable tray, suitable for large tools and accessories.
- Rubber shock-absorbing corners reduce wear and tear of box and help prevent abrasions to surroundings.
- Full-length aluminum handle for stability of heavy loads.
- Extra-large, nickel-plated metal latches with pad lock eyes.



Product #	Storage Capacity	Weight	Length	Width	Height	Color
020300R	8.1 gallons	5.20 lbs (2.4 kg)	19-5/8 in (498 mm)	10-1/2 in (265 mm)	10-5/16 in (263 mm)	Black
026301R	7.1 gallons	5.60 lbs (2.6 kg)	25-1/2 in (648 mm)	10-1/25 in (255 mm)	10-5/8 in (270 mm)	Black



STANLEY® SERIES 2000 TOOL BOXES WITH TRAYS

- Two lid organizers for small parts storage – accessible without opening the tool box.
- Built-in pad lock eye for small locks helps keep contents secure.
- Soft, wide rubber-coated handle allows for easy and comfortable grip.
- Nickel-plated metal latches.
- Tote tray.



Product #	Storage Capacity	Weight	Length	Width	Height	Color
016013R	2.1 gallons	2.40 lbs (1.1 kg)	16 in (406 mm)	8-2/10 in (208 mm)	7-2/10 in (183 mm)	Black/Yellow
019151M	4.7 gallons	3.97 lbs (1.8 kg)	19 in (482 mm)	9-3/4 in (248 mm)	9-3/4 in (247 mm)	Black/Yellow
024013S	8.2 gallons	5.90 lbs (2.7 kg)	23-1/2 in (597 mm)	11-3/8 in (289 mm)	10-7/8 in (276 mm)	Black/Yellow

STANLEY® METAL/PLASTIC ROLLING WORKSHOP

- 20" detachable metal plastic top tool box includes portable tray for small parts and hand tools - separates easily by pressing the front push button, enabling it to be transported when needed.
- Telescopic handle and large wheels for easy maneuverability.
- Ball bearing slides for smooth gliding and carrying heavy loads.
- Large bottom bin and drawer open up easily to form a workstation with access to all tools.
- 2 deep 4" drawers with ball bearing slides.
- Heavy-duty 7" wheels.



Product #	Storage Capacity	Weight	Length	Width	Height
020586R	14.1 gallons	25.3 lbs (11.50 kg)	22-1/8 in (562 mm)	15-3/4 in (401 mm)	28-1/4 in (717 mm)

STANLEY® FATMAX® 4-IN-1 MOBILE WORKSTATION



- 4 storage solutions in 1; includes tool box, part bins, portable tray and oversized lower bin for larger items.
- Tiered cantilever multi-level rolling system allows easy access to all 4 storage areas at the same time.
- Durable structural foam construction.
- The unit opens up easily using a single pull-up latch.
- Telescopic handle for ergonomic hold and easy maneuvering; can be lowered for storage.
- Four side handles allow to conveniently lift up above step on onto vehicle.
- Integrated V-groove on top tool box lid.
- Tool box latches are durable, metal latches.
- Heavy-duty wheels.
- Ball bearing slides for smooth opening even with heavy loads.
- Top part has a portable tray inside for hand tools.
- Middle part for small parts has removable dividers that allow to plan interior space according to your needs.
- Bottom bin is spacious for power tools.



Product #	Storage Capacity	Weight	Length	Width	Height
020800R	21.6 gallons	22.20 lbs (10.1 kg)	21-5/8 in (548 mm)	13-3/4 in (348 mm)	28-7/8 in (733 mm)

STANLEY® 3-IN-1 MOBILE WORK CENTER

- 3 storage solutions in 1; includes top tool box, middle carousel organizer and bottom bin.
- Large, heavy-duty nickel-plated metal latches.
- Two transparent lid organizers and middle carousel offer extensive small parts storage.
- Front pocket for storage of extension cord or other cables.
- Large truck wheels enable smooth, easy mobility.
- Conveniently fits into car trunk or back seat.



Product #	Storage Capacity	Weight	Length	Width	Height
018603R	14 gallons	9.53 lbs (4.32 kg)	18-3/8 in (466 mm)	11-7/16 in (290 mm)	24-3/8 in (619 mm)

3-IN-1 ROLLING WORKSHOP

- 3-in-1 – Bottom bin, middle organizer, top tool box.
- Each unit functions as stand alone.
- Removable tray allows enough space for larger tools to be stored underneath.
- Removable organizer for small parts organization; Unit can be used with and without it.

Delayed Availability



Product #	Storage Capacity	Weight	Length	Width	Height
STST18613	52.92 lbs (24 kg)	9.79 lbs (4.44 kg)	18-1/2 in (469.90 mm)	11-3/5 in (294.64 mm)	24-3/10 in (617 mm)



2-IN-1 ROLLING WORKSHOP

- 2-in-1 – Bottom Bin and Top Tool Box.
- Each unit functions as stand alone.
- Removable tray allows enough space for larger tools to be stored underneath.



Delayed Availability

Product #	Storage Capacity	Weight	Length	Width	Height
STST18612	52.92 lbs (24 kg)	8.15 lbs (3.7 kg)	18-1/3 in (466 mm)	11-1/2 in (292 mm)	24-1/7 in (689 mm)

STANLEY® MOBILE WORK CENTER

- Large bin for power tools, level and other large tools.
- Easy mobility with large wheels.
- Slide-down door with easy-shut snap.
- Handle folds down for storage.
- Portable tray for hand tools in top tool storage compartment.



Product #	Storage Capacity	Weight	Length	Width	Height
018800R	13 gallons	7.68 lbs (3.49 kg)	17-1/2 in (444 mm)	11-1/16 in (282 mm)	24-1/8 in (612 mm)

STANLEY® 50-GALLON MOBILE TOOL CHEST

- Wide work surface on lid that includes two 2" x 4" saw grooves.
- Pull-out steel handle with soft grip for easy maneuverability.
- Large, nickel-plated metal latches.
- Lock and keys included.
- Wide, heavy-duty rubber-coated wheel.



Product #	Storage Capacity	Weight	Length	Width	Height
037025H	50 gallons	31.30 lbs (14.22 kg)	37-1/2 in (954 mm)	22-1/5 in (571 mm)	23-1/4 in (590 mm)



TOOL STORAGE

STANLEY® 24-GALLON MOBILE TOOL CHEST

- Suitable for large power tools and accessories.
- Large, heavy-duty metal latches with pad lock eyes.
- Unique tote tray sits conveniently on the pull-out steel handle, increasing the available work space.
- Tote tray includes two deep compartments with covers for smaller tools and accessories.



Product #	Storage Capacity	Weight	Length	Width	Height
029025R	24 gallons	20.68 lbs (9.44 kg)	30 in (762 mm)	18-1/2 in (469 mm)	19 in (483 mm)

STANLEY® PRO MOBILE TOOL CHEST WITH CUPS

- Large space capacity.
- Transparent organizer lid for easy access to small parts.
- Wide work surface with saw-groove on top lid.
- Wide heavy-duty nickel-plated metal latches with padlock eye for locking.
- Extra large rubber coated wheels.
- Wide telescopic steel handle coated with rubber for easy maneuvering.
- Full size tote tray inside.
- Tools and accessories not included.



Product #	Storage Capacity	Weight	Length	Width	Height
033025R	15 gallons	13.46 lbs (6.10 kg)	24.18 in (614 mm)	14.62 in (371 mm)	16.57 in (420 mm)

STANLEY® PRO MOBILE TOOL CHEST WITH REMOVABLE ORGANIZER

- Removable organizer - just remove and all small parts are organized and accessible.
- Tools easily accessible from portable tray or bottom bin.
- V-groove on top lid for onsite sawing needs.
- Tools and accessories not included.



Product #	Storage Capacity	Length	Width	Height
033026R	12 gallons	24 in (609 mm)	14-1/8 in (358 mm)	16-3/4 in (425 mm)

STANLEY® FATMAX® PROFESSIONAL ORGANIZER



- High-impact, break-resistant crystal-clear lid.
- Unique lid design keeps storage cups locked in place.
- Removable cups for small parts and accessories.
- Built-in wide handle for easy and stable portability.
- Wide side latches for secure stacking - up to 3 together.
- Metal hinges.
- All round water seal for ultimate protection.
- Tools and accessories not included.



Product #	Length	Width	Height	Compartments	Type	Color
FMST14820	17-2/5 in (442 mm)	4-1/2 in (114 mm)	13-8/9 in (353 mm)	10	Deep	Clear/Black/Yellow
FMST14920	18-2/5 in (467 mm)	2-8/9 in (73 mm)	13-8/9 in (353 mm)	10	Shallow	Clear/Black/Yellow

STANLEY® FATMAX® PROFESSIONAL ORGANIZER



- High-impact, break-resistant, crystal-clear lid.
- Unique lid design keeps storage cups locked in place.
- Large, deep cups for easy access to small items.
- Removable various sizes cup compartments – suitable for hand tools and accessories
- Heavy-duty aluminum latches, handle.
- Tools and accessories not included.



Product #	Storage Capacity	Weight	Length	Width	Height	Compartments	Type	Color
014461M	8.19 gallons	5.80 lbs (2.72 kg)	23-1/2 in (597 mm)	11-3/8 in (289 mm)	10-7/8 in (276 mm)	14	Deep	Clear/Black/ Yellow

STANLEY® DEEP PROFESSIONAL ORGANIZER

- High-impact, break-resistant, crystal-clear lid.
- Unique lid design keeps storage cups locked in place.
- Removable cup compartments in different sizes.
- Large, deep cups for easy access to small items.
- Extra-wide handle designed for gloved hands.



Product #	Weight	Length	Width	Height	Compartments	Color
014710R	3.68 lbs (1.670 kg)	16-5/8 in (422 mm)	4-1/16 in (103 mm)	13-1/8 in (333 mm)	10	Clear/Black/Yellow

STANLEY® 25 COMPARTMENT PROFESSIONAL ORGANIZER

- High-impact, break-resistant crystal-clear lid.
- Unique lid design keeps storage cups locked in place.
- Removable cup compartments in 3 different sizes.
- Extra-wide handle designed for gloved hands.



Product #	Weight	Length	Width	Height	Color
014725R	3.06 lbs (1.38 kg)	16-9/50 in (411 mm)	13-7/50 in (333 mm)	2-1/10 in (53 mm)	Clear/Black/Yellow

STANLEY® SORTMASTER™ ORGANIZER

- Unique interior open-ended corners – accommodates angled tools, such as hammers, etc.
- Organizer allows combination of tools and small parts storage.
- Customized with removable dividers – 1,024 different configurations possible to meet every need.
- Lid structure with interlocking ribs – prevents movement of small parts from one compartment to another.
- Top lid lock keeps all small parts secured inside.



Product #	Weight	Length	Width	Height	Compartments	Color
014026R	2.31 lbs (1.05 kg)	16-24/25 in (431 mm)	12-49/50 in (327 mm)	3-3/7 in (88 mm)	17	Clear/Black/Yellow

STANLEY™ SORTMASTER™ JUNIOR

- Innovative benefits such as locking latches allow secured stacking and transport of up to 3 at once.
- Movable dividers provide high customization for small parts and larger hand tools; 512 configurations possible.
- Unique 90° angle in the main compartment design allows storage of hammers and angled tools or measuring tapes comfortably with the small parts in the other nearby compartments.
- Special lid structure – upper lid interlocks with dividers to prevent movement of small parts from one compartment to another.
- Tools and accessories not included.



Can carry up to 3 together using latches



Product #	Weight	Length	Width	Height	Compartments	Color
STST14022	1.64 lbs (0.744 kg)	14-3/5 in (371 mm)	11-2/5 in (290 mm)	2-3/5 in (66 mm)	14	Clear/Black/Yellow

STANLEY™ SORTMASTER™ LIGHT

- Locking latches allow secured stacking and transport of up to 3 at once.
- Removable dividers provide high customization for small parts and larger hand tools.
- Special lid structure – upper lid interlocks with dividers to prevent movement of small parts from one compartment to another.
- Tools and accessories not included.



Additional latch for double sided stacking

Product #	Weight	Length	Width	Height	Compartments	Color
STST14021	0.83 lbs (0.376 kg)	11-3/5 in (295 mm)	8-3/5 in (218 mm)	2-4/5 in (71 mm)	10	Clear/Black/Yellow

Delayed Availability



STANLEY® LARGE DOUBLE-SIDED TOOL ORGANIZER

- Double-sided organizer allows easy access to both sides.
- Sides fold down flat for great stability.
- 8 drawer dividers.
- Removable organizer drawers slide out for easy access and portability.
- Multiple separate compartments for storing both fasteners and smaller hand tools.
- Built-in wide handle for gloved hands.
- Fold-up sides interconnect and lock middle drawers to help prevent accidental opening.
- Heavy-duty latches are easy to open.



Product #	Weight	Length	Width	Height
014266R	6.82 lbs (3.09 kg)	17-41/50 in (452 mm)	9-5/8 in (244 mm)	12-7/10 in (323 mm)

STANLEY® FATMAX® 18 COMPARTMENT ORGANIZER



- 18 compartments in various sizes.
- Comfortable, Bi-Material handle.
- Double-latch closure on both sides.
- See-through lid
- Tools and accessories not included.



Product #	Weight	Length	Width	Height
014002R	1.34 lbs (0.608 kg)	14-3/11 in (365 mm)	11-9/20 in (291 mm)	2-13/25 in (64 mm)

STANLEY® TOOL TRAY

- Portable, multipurpose tool storage unit.
- Extra deep - 2 deep compartments with 1.58 gallon volume.
- Perforations for tools are high enough so that longer screwdrivers can be placed without scratching the surface.
- Ergonomic handle - wide and comfortable for carrying heavy loads.



Product #	Weight	Length	Width	Height
041003W	1.68 lbs (0.762 kg)	19-3/4 in (501 mm)	13-3/8 in (341 mm)	8-3/4 in (222 mm)

STANLEY® FATMAX® STOCK AND CARRY



- Modular, portable storage container for small parts and hand tools.
- Hangers included – can be easily hung to form a modular system – just take it with you and hang back when done.
- Sliding cover clicks shut – keep contents safely secured inside during upright transport.
- Vertical transportation is possible – can easily be carried and the lid remains closed.
- Hang tag included – useful for marking contents and differentiating.



Product #	Parts	Weight	Length	Width	Height
058003R	Set	3.14 lbs (1.42 kg)	11-31/50 in (295 mm)	6-5/8 in (168 mm)	15-1/2 in (393 mm)
	Individual	1.05 lbs (0.47 kg)	11-31/50 in (295 mm)	6-5/8 in (168 mm)	5-1/8 in (3 mm)

STANLEY® BIN #2 BONUS SET WITH HANGERS

- Set includes 8 small storage bins.
- Hangers allow bins to hang on wall for easy access.
- Bins can be stacked or nested.
- Tools and accessories not included.



Product #	Weight	Length	Width	Height
057208R	1.39 lbs (0.630 kg)	6-1/2 in (165 mm)	4-1/8 in (105 mm)	13-1/2 in (343 mm)

STANLEY® BIN #3 BONUS SET WITH HANGERS

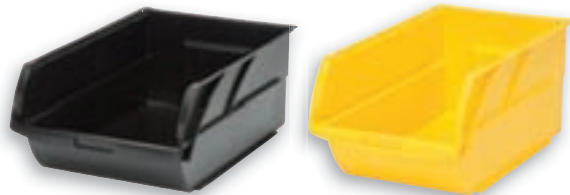
- Set includes 4 medium-size storage bins with hangers.
- Hangers allow for hanging of bins on wall for easy access.
- Bins can be stacked or nested.
- High-impact, polypropylene construction.
- Tools and accessories not included.



Product #	Weight	Length	Width	Height
057304R	1.42 lbs (0.644 kg)	9-3/8 in (238 mm)	5-17/20 in (149 mm)	12-5/8 in (321 mm)

STANLEY® BINS

- Bins can be stacked or nested.
- Suitable for storing small parts or tools.
- Wide mouth design for easy access to contents.
- High-impact, polypropylene construction.



Product #	Weight	Length	Width	Height
056400L	0.79 lbs (0.358 kg)	12-3/4 in (324 mm)	7-4/5 in (195 mm)	6-1/12 in (155 mm)
056500L	1.41 lbs (0.640 kg)	18-1/4 in (463 mm)	12 in (305 mm)	7-1/8 in (181 mm)

STANLEY® FATMAX® ADJUSTABLE LEG SAWHORSE

- Each leg adjusts separately, allowing the sawhorse to stand on uneven surfaces.
- Rubber inserts for stability.
- High-quality, sturdy polypropylene and aluminum legs.
- Unique slide mechanism, providing for easy, smooth adjustment.



STANLEY
FatMax

Product #	Weight Capacity	Weight	Length	Width	Height
011031S	2500 lbs (per pair)	10.45 lbs (6.742 kg)	27-1/4 in (692 mm)	2 in (51 mm)	32 - 39 in (812 - 990 mm)



STANLEY® ADJUSTABLE SAWHORSE TWIN PACK

- 2-way adjustable sawhorse.
- Smooth sliding mechanism for easy adjustment of ruler and legs.
- Anti-slip rubber on feet and top for safety.
- Multi-purpose grooves for working on materials such as pipes and lumber.
- Metric and inch ruler on top frame.



Product #	Weight Capacity	Weight	Length	Width	Height
060622R	1000 lbs (per pair)	24.60 lbs (11.18 kg)	29-7/8 in (759 mm)	2-5/8 in (67 mm)	30 - 37 in (762 - 940 mm)

STANLEY® FOLD-UP SAWHORSE

- Galvanized metal and polypropylene construction for lightweight durability.
- Integrated handle or shoulder strap for easy transport – side latches hold two single units together for storage/portability.
- Folding metal legs with locking mechanism for easy setup and safe transportation.
- Rubber leg tips to help prevent movement.
- Designed with working height in mind for comfort.



Product #	Weight Capacity	Weight	Length	Width	Height
STST11151	750 lbs (per pair)	9.34 lbs (4.24 kg)	39-3/5 in (1006 mm)	4-8/9 in (124 mm)	29-8/9 in (734 mm)

STANLEY® FOLDING SAWHORSE TWIN PACK

- Comfortable work height.
- Multipurpose side hangers for storage of accessories.
- Strong tray connection helps keep sawhorse from collapsing unexpectedly under heavy load.
- Two built-in V-grooves hold materials such as lumber and pipes in place for cutting.
- Rubber points line top of ruler for load stability.



Product #	Weight Capacity	Weight	Length	Width	Height
060864R	1000 lbs (per pair)	12.45 lbs (5.65 kg)	26-7/8 in (682 mm)	2-1/8 in (53 mm)	32 in (813 mm)

STANLEY® JUNIOR FOLDING SAWHORSE TWIN PACK

- Light weight and easy to transport.
- Integrated V-groove.
- Bottom tray for storage while in use.



Product #	Weight Capacity	Weight	Length	Width	Height
STST60952	750 lbs (per pair)	10.86 lbs (4.93 kg)	22-1/2 in (572 mm)	5 in (127 mm)	32 in (813 mm)

