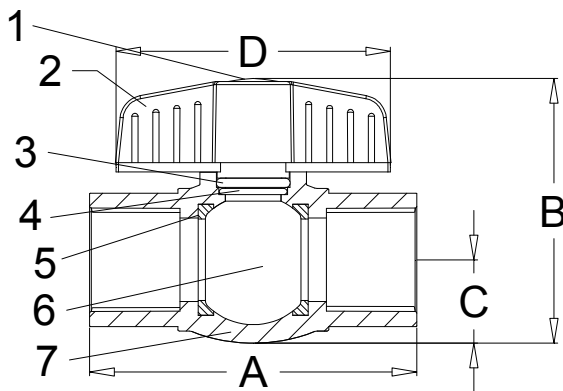


PVC BALL VALVE, THREADED



- IPS
- NPT threads
- 150 psi @ 180°F
- Produced using virgin CPVC resins



No.	Part	Material
1	Cap	ABS
2	Handle	ABS
3	O-Ring	EPDM
4	O-Ring	EPDM
5	Seat	PTFE
6	Ball	PVC
7	Body	PVC

Size IN	Part Number	Weight LB	A IN	B IN	C IN	D IN
1/2	02939121G	0.2	3.16	2.46	0.71	2.74
3/4	02939121I	0.2	3.61	2.98	0.87	3.01
1	02939121K	0.4	4.19	3.39	1.06	3.53
1-1/4	02939121L	0.5	4.76	3.80	1.21	3.54
1-1/2	02939121M	0.8	5.13	4.32	1.46	4.42
2	02939121N	1.4	5.93	5.36	1.83	5.53
2-1/2	02939121P	3.7	7.48	7.68	2.26	7.09
3	02939121Q	5.6	8.66	8.86	2.66	9.05
4	02939121T	6.3	10.24	10.24	3.35	10.04

USA 800-766-0076

Fax 323-890-4456

www.smithcooper.com

Los Angeles, CA

Chicago, IL

Atlanta, GA

Vancouver, WA

Houston, TX

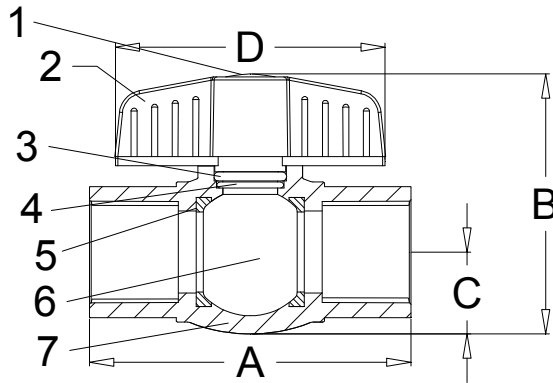
USA 800-766-0076
 Fax 323-890-4456
 www.smithcooper.com
 Los Angeles, CA
 Chicago, IL
 Atlanta, GA
 Vancouver, WA
 Houston, TX

Series 02939122

PVC BALL VALVE, SLIP



- Schedule 40/80 PVC
- IPS
- 150 psi @ 73°F
- Molded in place construction
- White with blue handle
- EPDM O-ring
- Santoprene seat



No.	Part	Material
1	Cap	ABS
2	Handle	ABS
3	O-Ring	EPDM
4	O-Ring	EPDM
5	Seat	PTFE
6	Ball	PVC & ABS
7	Body	PVC

Size IN	Part Number	Weight LB	A IN	B IN	C IN	D IN
1/2	02939122G	0.2	3.16	2.46	0.71	2.74
3/4	02939122I	0.2	3.61	2.98	0.87	3.01
1	02939122K	0.4	4.19	3.39	1.06	3.53
1-1/4	02939122L	0.5	4.76	3.80	1.21	3.54
1-1/2	02939122M	0.8	5.13	4.32	1.46	4.42
2	02939122N	1.4	5.93	5.36	1.83	5.53
2-1/2	02939122P	3.7	7.48	7.68	2.26	7.09
3	02939122Q	5.6	8.66	8.86	2.66	9.05
4	02939122T	6.3	10.24	10.24	3.35	10.04