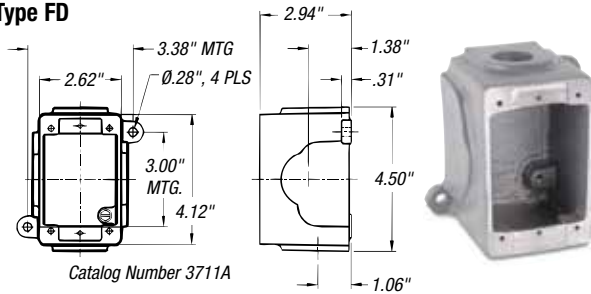


## DuraGard® Waterproof Connections

### Conduit Boxes (For Surface Mounting)

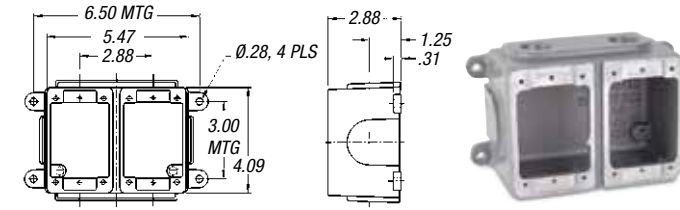
#### Type FD



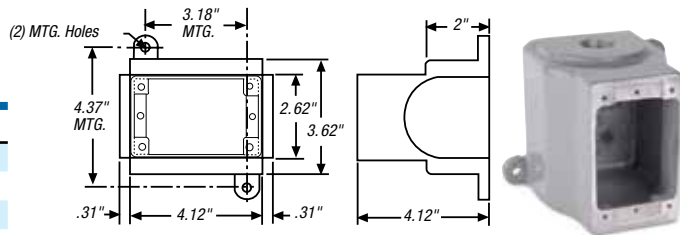
Catalog Number 3711A

|        | CAST ALUMINUM | CAST BRASS | USE WITH |
|--------|---------------|------------|----------|
| Single | 3711A         | 3731-RS    | 20A      |
| Double | 3712A         | 3732-RS    | 30A      |
| DSFD   | 3781A         | —          | 50A      |

Note: 3/4" NPT Hole Std. Additional accessories are available. Please consult your Thomas & Betts representative.

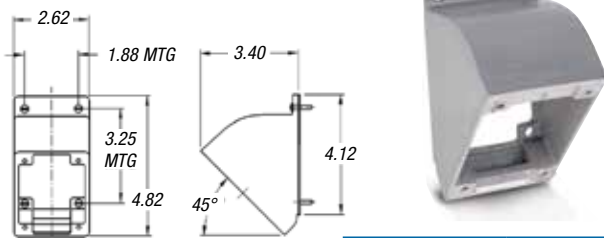


Catalog Number 3712A



Catalog Number 3781A

### 45° Angle Adapter



Catalog Number 3678A

|  | CAST ALUMINUM | CAST BRASS |
|--|---------------|------------|
|  | 3678A         | 3678B      |

### Conduit Adapter Kits (Plugs or Connectors)



| SIZE | 20 AMP | 30 AMP | 50 AMP | 60 AMP |
|------|--------|--------|--------|--------|
| 1/2" | 9X2C50 | 9X3C50 | —      | —      |
| 3/4" | 9X2C75 | 9X3C75 | 9X5C75 | 9X6C75 |
| 1"   | —      | 9X3C10 | 9X5C10 | 9X6C10 |

### Cable Bushings



20-Amp Cable Bushing

| MAX. CABLE O.D. (INCHES) | 20 AMP  | 30, 50 & 60 AMP |
|--------------------------|---------|-----------------|
| .375                     | C16984A | —               |
| .437                     | C16984B | —               |
| .500                     | C16984C | —               |
| .545                     | —       | 2000-11         |
| .562                     | C16984D | —               |
| .606                     | B16506  | —               |
| .620                     | —       | 2000-03         |
| .625                     | B16524  | —               |
| .700                     | —       | 2000-04         |
| .750                     | —       | 2000-01         |
| .800                     | —       | 2000-06         |
| .870                     | —       | 2000-02         |
| .925                     | —       | 2000-12         |
| 1.000                    | —       | 2000-05         |

(Minimum limit 85% of O.D. size for sealing.)

Material — Oil-resistant Neoprene.

State catalog number followed by slash (/) and Max. Cable O.D.; example: 9P33U1/1000 will order the 1.000" bushing instead of the standard .700" bushing for the 9P33U1.

### Replacement Caps



|                        | 20 AMP | 30 AMP | 50 AMP | 60 AMP |
|------------------------|--------|--------|--------|--------|
| Screw Cap (Connector)  | 9X2PSC | 9X3PSC | 9X5PSC | 9X6PSC |
| Cup Cap (Plug)         | —      | 9X3CC  | 9X3CC  | 9X3CC  |
| Screw Cap (Receptacle) | —      | 7X3RCW | 7X5RCW | 7X6RCW |
| Flap Cap (Receptacle)  | —      | 7X3RCF | 7X5RCF | 7X6RCF |

## DuraGard® Waterproof Connections

### Replacement Interiors



| AMPS                  | VOLTAGE POLARIZATION  | CAT. NO.               |                          |
|-----------------------|-----------------------|------------------------|--------------------------|
|                       |                       | MALE INTERIOR ASSEMBLY | FEMALE INTERIOR ASSEMBLY |
| 2P3W<br>20A           | 125VAC                | 9XM23U1                | 9XF23U1                  |
|                       | 250VAC                | 9XM23U2                | 9XF23U2                  |
|                       | 277VAC                | 9XM23U3                | 9XF23U3                  |
|                       | 480VAC                | 9XM23U4                | 9XF23U4                  |
|                       | 600VAC                | 9XM23U5                | 9XF23U5                  |
|                       | through 600VAC/250VDC | 9XM23U0                | 9XF23U0                  |
| 2P3W<br>30A           | 125VAC                | 9XM33U1                | 9XF33U1                  |
|                       | 250VAC                | 9XM33U2                | 9XF33U2                  |
|                       | 277VAC                | 9XM33U3                | 9XF33U3                  |
|                       | 480VAC                | 9XM33U4                | 9XF33U4                  |
|                       | 600VAC                | 9XM33U5                | 9XF33U5                  |
|                       | through 600VAC/250VDC | 9XM33U0                | 9XF33U0                  |
| 2P3W<br>50A           | 125VAC                | 9XM53U1                | 9XF53U1                  |
|                       | 250VAC                | 9XM53U2                | 9XF53U2                  |
|                       | 480VAC                | 9XM53U4                | 9XF53U4                  |
|                       | 600VAC                | 9XM53U5                | 9XF53U5                  |
|                       | through 600VAC/250VDC | 9XM53U0                | 9XF53U0                  |
|                       | 3P4W<br>20A           | 125/250VAC             | 9XM24U1                  |
| 3Ø 250VAC             |                       | 9XM24U2                | 9XF24U2                  |
| 3Ø 480VAC             |                       | 9XM24U4                | 9XF24U4                  |
| 3Ø 600VAC             |                       | 9XM24U5                | 9XF24U5                  |
| through 600VAC/250VDC |                       | 9XM24U0                | 9XF24U0                  |
| 3P4W<br>30A           |                       | 125/250VAC             | 9XM34U1                  |
|                       | 3Ø 250VAC             | 9XM34U2                | 9XF34U2                  |
|                       | 3Ø 480VAC             | 9XM34U4                | 9XF34U4                  |
|                       | 3Ø 600VAC             | 9XM34U5                | 9XF34U5                  |
|                       | through 600VAC/250VDC | 9XM34U0                | 9XF34U0                  |
|                       | 3P4W<br>50A           | 125/250VAC             | 9XM54U1                  |
| 3Ø 250VAC             |                       | 9XM54U2                | 9XF54U2                  |
| 3Ø 480VAC             |                       | 9XM54U4                | 9XF54U4                  |
| 3Ø 600VAC             |                       | 9XM54U5                | 9XF54U5                  |
| through 600VAC/250VDC |                       | 9XM54U0                | 9XF54U0                  |
| 2P3W<br>60A           |                       | 125VAC                 | 9XM63U1                  |
|                       | 250VAC                | 9XM63U2                | 9XF63U2                  |
| 3P4W<br>60A           | 125/250VAC            | 9XM64U1                | 9XF64U1                  |
|                       | 3Ø 250VAC             | 9XM64U2                | 9XF64U2                  |