

Rittal – The System.

Faster – better – everywhere.

Cable duct – TS 8800.753

Date : Oct 5, 2018

ENCLOSURES

POWER DISTRIBUTION

CLIMATE CONTROL

IT INFRASTRUCTURE

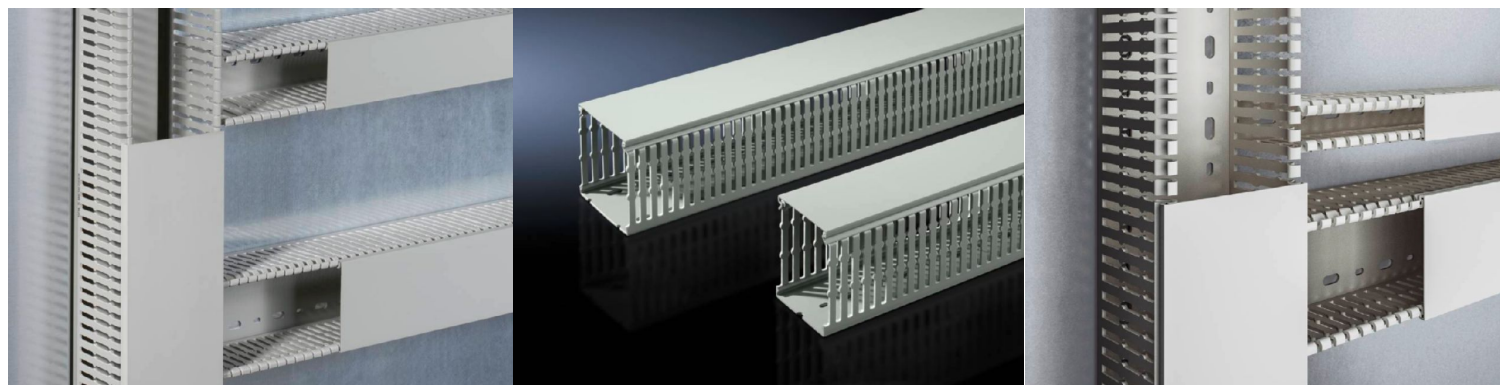
SOFTWARE & SERVICES

FRIEDHELM LOH GROUP



Cable duct – TS 8800.753

created: 05.10.2018 build on www.rittal.com/uk-en



Product description

Design:	for mounting plates
Design:	for mounting plates
Description:	With special DIN punchings for direct mounting on the enclosure section or on surfaces such as mounting plates.
Material:	Hard PVC Flame-resistant, self-extinguishing Temperature resistant to +60 °C
Colour:	Similar to RAL 7030
Supply includes:	Cable duct with cover
Note:	Can be shortened for other dimensions.

Product features

Dimensions:	Width: 80 mm Depth: 80 mm Length: 2000 mm
Installation options:	If the TS mounting plate is installed in the rearmost position, the horizontally mounted cable ducts are flush with the vertical ones. To fit the cable ducts for vertical TS sections.
Bar width:	5.5 mm

Slot width:	4.5 mm
Operating temperature:	Operation (environment): 60 °C
Packs of:	12 pc(s).
Weight/pack:	21.07 kg
EAN:	4028177445475
Customs tariff number:	39259020
ETIM 6.0:	EC000012
ETIM 5.0:	EC000012
eCl@ss 8.0/8.1:	27400703
eCl@ss 7.0/7.1:	27400703
eCl@ss 6.0/6.1:	27400703
eCl@ss 5.1/5.1.4:	27189224
Product description (long):	TS Cable duct for mounting plate, WHD: 80x2000x80 mm
Approvals	
Certificates:	EAC