

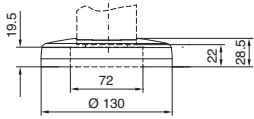
Enclosures

Support arm system CP 60/120/180

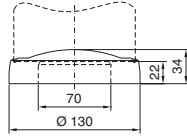
Attachment CP 60/120

for command panels with support arm connection $\varnothing 130$ mm

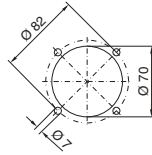
CP 6206.320



CP 6212.320



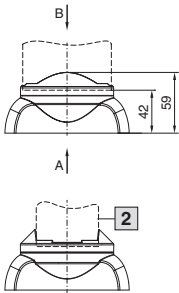
Mounting cut-out
Enclosure $\varnothing 130$ mm



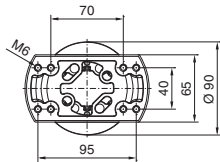
Attachment CP 60

for command panels with support arm connection $\square 120 \times 65$ mm

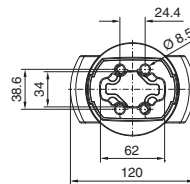
CP 6206.360



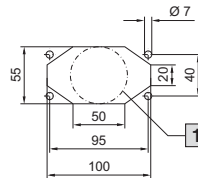
View A



View B



Mounting cut-out
Enclosure $\square 120 \times 65$ mm

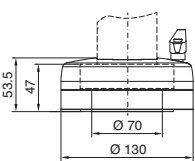


- 1 Alternative max. $\varnothing 55$ mm
- 2 Support section may also be rotated through 90°

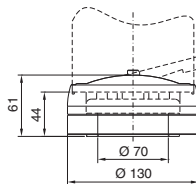
Coupling CP 60/120

for command panels with support arm connection $\varnothing 130$ mm

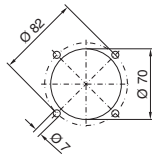
CP 6206.300



CP 6212.300



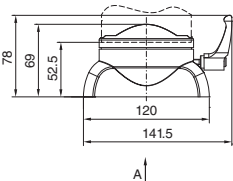
Mounting cut-out
Enclosure $\varnothing 130$ mm



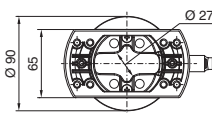
Coupling CP 60

for command panels with support arm connection $\square 120 \times 65$ mm

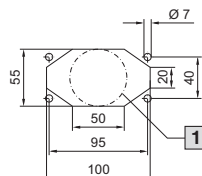
CP 6206.340



View A



Mounting cut-out
Enclosure $\square 120 \times 65$ mm



- 1 Alternative max. $\varnothing 55$ mm

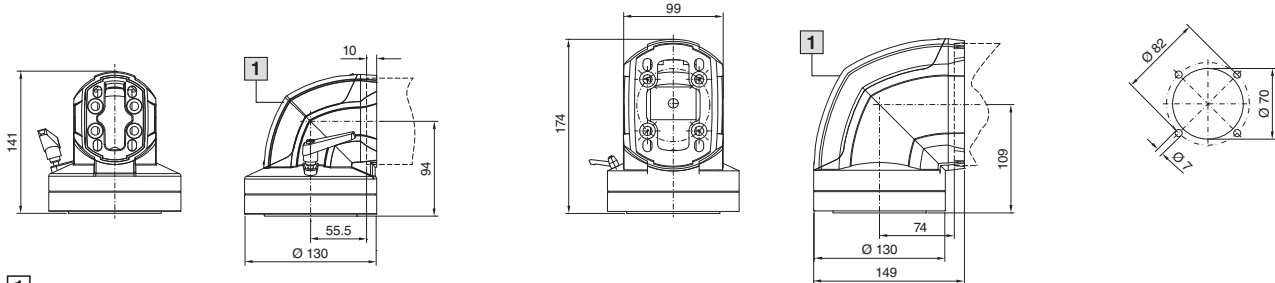
Angle coupling 90° CP 60/120

for command panels with support arm connection Ø 130 mm

CP 6206.380

CP 6212.380

Mounting cut-out
Enclosure Ø 130 mm

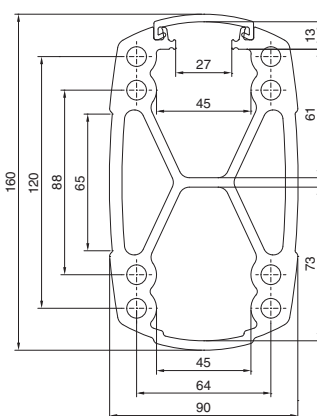
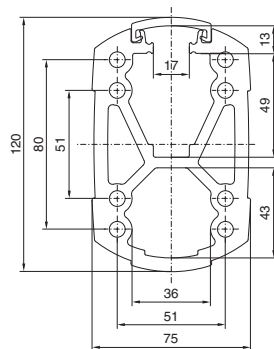
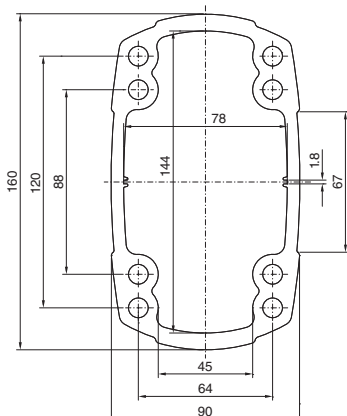
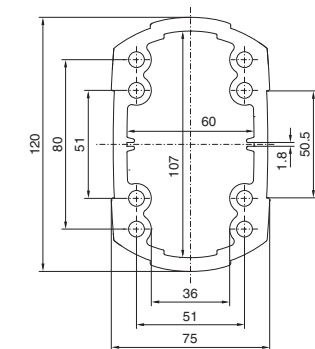
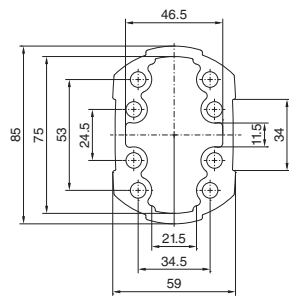


1 Removable cover

Support section CP 60/120/180, solid and CP 120/180, open

Support section solid

Support section open



Length mm	Support section CP 60	
	Solid	Open
	Model No. CP	
250	6206.025	–
500	6206.050	–
1000	6206.100	–
2000	6206.200	–

Length mm	Support section CP 120	
	Solid	Open
	Model No. CP	
250	6212.025	–
500	6212.050	6212.150
1000	6212.100	6212.110
2000	6212.200	6212.210

Length mm	Support section CP 180	
	Solid	Open
	Model No. CP	
500	6218.050	6218.150
1000	6218.100	6218.110
2000	6218.200	6218.210