

# CoreProClass LEDtube InstantFit T8

30T8/PRO/96-850/IF42/G/FA8 10/1

Philips LED T8 InstantFit Lamps are an ideal energy saving choice for existing linear fluorescent fixtures.

## Product data

| General Information                   |                     | Starting Time (Nom)             |   |
|---------------------------------------|---------------------|---------------------------------|---|
| Cap-Base                              | FA8 [ FA8]          |                                 | 0.5 s   |
| Nominal Lifetime (Nom)                | 50000 h             | Warm Up Time to 60% Light (Nom) | 0.5 s   |
| Switching Cycle                       | 50000X              | Power Factor (Nom)              | 0.9   |
| B50L70                                | 50000 h             | Voltage (Nom)                   | 200-500 V                                     |
| Light Technical                       |                     | Temperature                     |   |
| Color Code                            | 850 [ CCT of 5000K] | T-Ambient (Max)                 | 45 °C   |
| Beam Angle (Nom)                      | 240 °               | T-Ambient (Min)                 | -20 °C  |
| Initial lumen (Nom)                   | 4200 lm             | T-Storage (Max)                 | 65 °C   |
| Luminous Flux (Rated) (Nom)           | 4200 lm             | T-Storage (Min)                 | -40 °C  |
| Rated Beam Angle                      | 240 °               | T-Case Maximum (Nom)            | 45 °C   |
| Correlated Color Temperature (Nom)    | 5000 K              | Controls and Dimming            |   |
| Color Consistency                     | ANSI                | Dimmable                        | No  |
| Color Rendering Index (Nom)           | 80                  | Mechanical and Housing          |   |
| LLMF At End Of Nominal Lifetime (Nom) | 70 %                | Product Length                  | 2400 mm                                       |
| Operating and Electrical              |                     | Approval and Application        |   |
| Input Frequency                       | 35000-150000 Hz     | Energy Saving Product           | Yes   |
| Power (Rated) (Nom)                   | 30 W                | Approbation Marks               | UL certificate RoHS compliance DLC compliance |
| Lamp Current (Max)                    | 350 mA              |                                 |   |
| Lamp Current (Min)                    | 100 mA              |                                 |   |

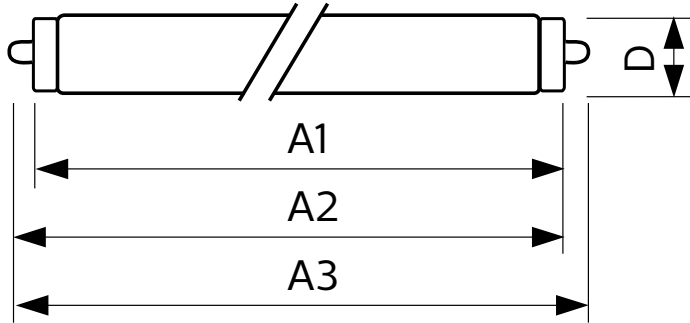
# CoreProClass LEDtube InstantFit T8

## Product Data

|                                 |                                 |
|---------------------------------|---------------------------------|
| Order product name              | 30T8/PRO/96-850/IF42/G/FA8 10/1 |
| EAN/UPC - Product               | 046677533038                    |
| Order code                      | 533034                          |
| Numerator - Quantity Per Pack   | 1                               |
| Numerator - Packs per outer box | 10                              |

|                     |              |
|---------------------|--------------|
| Material Nr. (12NC) | 929001897404 |
| Net Weight (Piece)  | 0.540 kg     |
| Model Number        | 9290018974   |

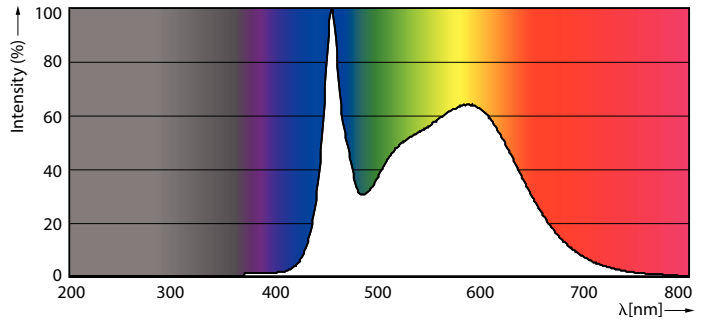
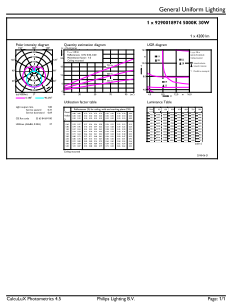
## Dimensional drawing



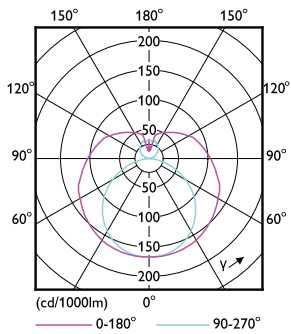
T8 120V 29-60W 4200lm 5000K G13

| Product          | D1      | D2    | A1        | A2        | A3        |
|------------------|---------|-------|-----------|-----------|-----------|
| 30T8/PRO/96-850/ | 25.5 mm | 28 mm | 2366.9 mm | 2375.8 mm | 2384.7 mm |
| IF42/G/FA8 10/1  |         |       |           |           |           |

## Photometric data



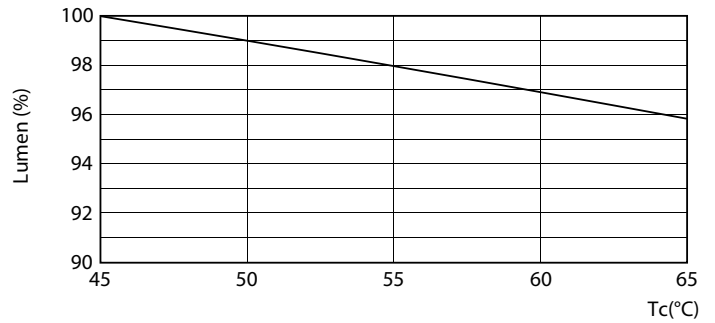
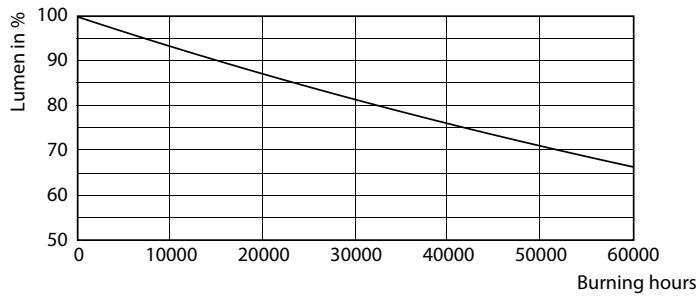
30W FA8



30W FA8 830 3000K

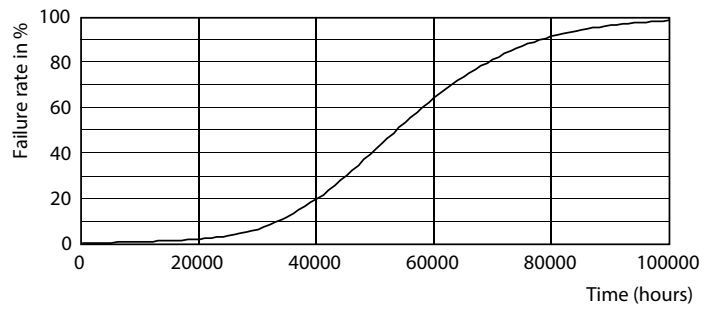
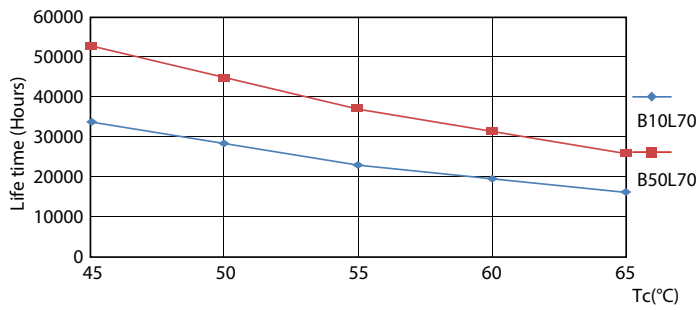
# CoreProClass LEDtube InstantFit T8

## Lifetime



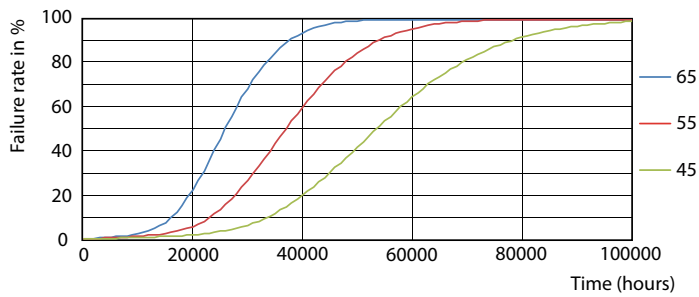
30W FA8

30W FA8



30W FA8

30W FA8



30W FA8

## CoreProClass LEDtube InstantFit T8

