



# LED InstantFit Lamps

## 5.5PL-C/LED/13V/840/IF5/P/4P 20/1

Philips LED T8 InstantFit Lamps are an ideal energy saving choice for existing linear fluorescent fixtures.

### Product data

General Information	
Cap-Base	G24Q [ G24q]
Nominal Lifetime (Nom)	50000 h
Switching Cycle	50000X
B50L70	50000 h
Light Technical	
Color Code	841 [ CCT of 4100K (841)]
Beam Angle (Nom)	150 °
Initial lumen (Nom)	580 lm
Luminous Flux (Rated) (Nom)	580 lm
Rated Beam Angle	150 °
Correlated Color Temperature (Nom)	4000 K
Color Consistency	<6
Color Rendering Index (Nom)	82
LLMF At End Of Nominal Lifetime (Nom)	70 %
Operating and Electrical	
Input Frequency	25000-100000 Hz
Power (Rated) (Nom)	5.5 W
Lamp Current (Max)	280 mA
Lamp Current (Min)	130 mA
Starting Time (Nom)	0.5 s
Warm Up Time to 60% Light (Nom)	0.5 s
Power Factor (Nom)	0.9

Voltage (Nom)	14-60 V
Temperature	
T-Ambient (Max)	45 °C
T-Ambient (Min)	-20 °C
T-Storage (Max)	65 °C
T-Storage (Min)	-40 °C
T-Case Maximum (Nom)	70 °C
Controls and Dimming	
Dimmable	No
Mechanical and Housing	
Product Length	100 mm
Approval and Application	
Energy Saving Product	Yes
Approbation Marks	UL certificate RoHS compliance
Product Data	
Order product name	5.5PL-C/LED/13V/840/IF5/P/4P 20/1
EAN/UPC - Product	046677532468
Order code	532465
Numerator - Quantity Per Pack	1
Numerator - Packs per outer box	20

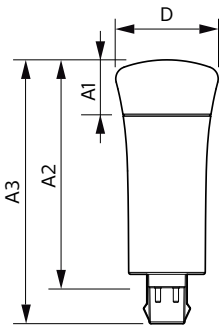
# LED InstantFit Lamps

Material Nr. (12NC)	929001886004
Net Weight (Piece)	0.058 kg
Model Number	9290018860

## Warnings and Safety

- Perform a visual inspection to ensure lamp holders (or sockets) are not damaged or loose. If the lamp holders (or sockets) are damaged, corroded, charred, blackened or loose, contact a qualified electrician for proper replacement.
- Please refer to the ballast compatibility guide located at [www.philips.com/instantfit](http://www.philips.com/instantfit).

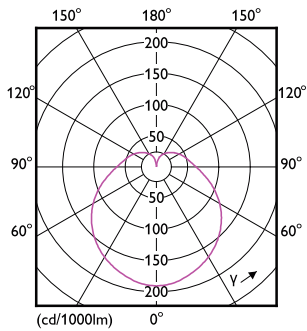
## Dimensional drawing



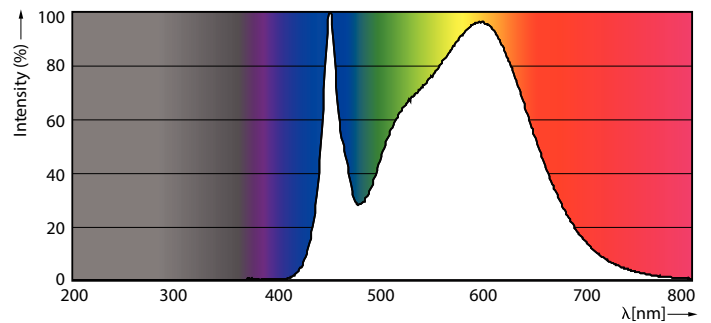
PLED PLC-V 5-13W 580lm 4000K G24q

Product	D	A1	A2	A3
5.5PL-C/LED/13V/840/IF5/P/4P 20/1	45.7 mm	24.6 mm	101.6 mm	117.6 mm

## Photometric data



LEDtube PLC 13V 5W GX23-2 827 15D ND



LEDtube PLC 13V 5.5W G24Q 840 15D ND

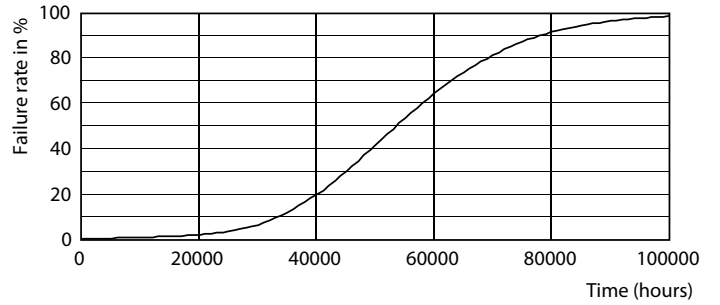
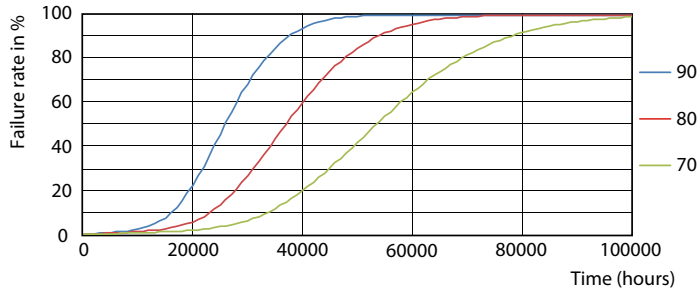
General Uniform Lighting

1. FOTOMETRIE AREA 1.5W

Area	Area [m²]	Area [ft²]	Area [m²]	Area [ft²]
1	1.5	16.1	1.5	16.1
2	3.0	32.3	3.0	32.3
3	4.5	48.4	4.5	48.4
4	6.0	64.6	6.0	64.6
5	7.5	80.7	7.5	80.7
6	9.0	96.9	9.0	96.9
7	10.5	113.0	10.5	113.0
8	12.0	129.2	12.0	129.2
9	13.5	145.3	13.5	145.3
10	15.0	161.5	15.0	161.5

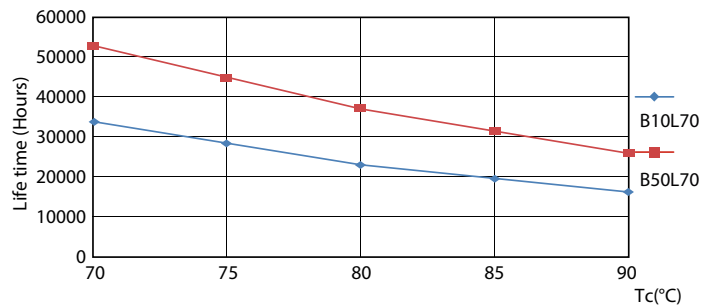
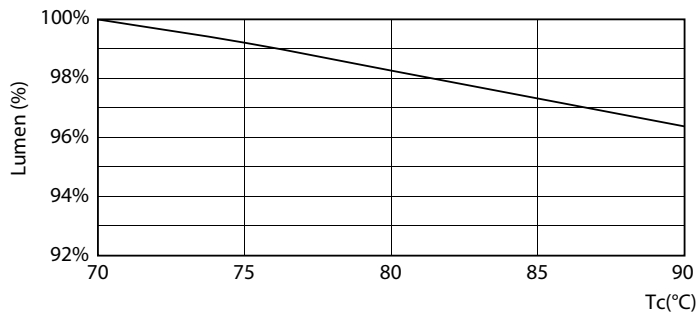
# LED InstantFit Lamps

## Lifetime



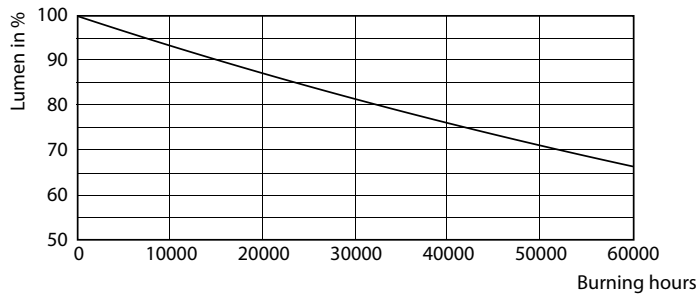
LEDtube PLC 13H 5W GX23-2 827 15D ND

LEDtube PLC 13H 5W GX23-2 827 15D ND



LEDtube PLC 13V 5.5W G24Q 827 15D ND

LEDtube PLC 13H 5W GX23-2 827 15D ND



LEDtube PLC 13H 5W GX23-2 827 15D ND

## LED InstantFit Lamps

