



# LED InstantFit Lamps

## 5.5PL-C/LED/13V/827/IF5/P/4P 20/1

Philips LED T8 InstantFit Lamps are an ideal energy saving choice for existing linear fluorescent fixtures.

### Product data

General Information		Voltage (Nom)	
Cap-Base	G24Q [ G24q]	14-60 V	
Nominal Lifetime (Nom)	50000 h	Temperature	
Switching Cycle	50000X	T-Ambient (Max)	45 °C
B50L70	50000 h	T-Ambient (Min)	-20 °C
Light Technical		T-Storage (Max)	65 °C
Color Code	827 [ CCT of 2700K]	T-Storage (Min)	-40 °C
Beam Angle (Nom)	150 °	T-Case Maximum (Nom)	70 °C
Initial lumen (Nom)	520 lm	Controls and Dimming	
Luminous Flux (Rated) (Nom)	520 lm	Dimmable	No
Rated Beam Angle	150 °	Mechanical and Housing	
Correlated Color Temperature (Nom)	2700 K	Product Length	100 mm
Color Consistency	<6	Approval and Application	
Color Rendering Index (Nom)	82	Energy Saving Product	Yes
LLMF At End Of Nominal Lifetime (Nom)	70 %	Approbation Marks	UL certificate RoHS compliance
Operating and Electrical		Product Data	
Input Frequency	25000-100000 Hz	Order product name	5.5PL-C/LED/13V/827/IF5/P/4P 20/1
Power (Rated) (Nom)	5.5 W	EAN/UPC - Product	046677532437
Lamp Current (Max)	280 mA	Order code	532432
Lamp Current (Min)	130 mA	Numerator - Quantity Per Pack	1
Starting Time (Nom)	0.5 s	Numerator - Packs per outer box	20
Warm Up Time to 60% Light (Nom)	0.5 s		
Power Factor (Nom)	0.9		

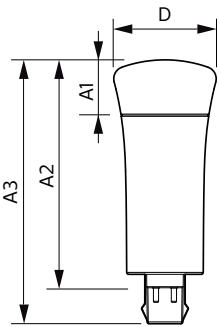
# LED InstantFit Lamps

Material Nr. (12NC)	929001885704
Net Weight (Piece)	0.058 kg
Model Number	9290018857

## Warnings and Safety

- Perform a visual inspection to ensure lamp holders (or sockets) are not damaged or loose. If the lamp holders (or sockets) are damaged, corroded, charred, blackened or loose, contact a qualified electrician for proper replacement.
- Please refer to the ballast compatibility guide located at [www.philips.com/instantfit](http://www.philips.com/instantfit).

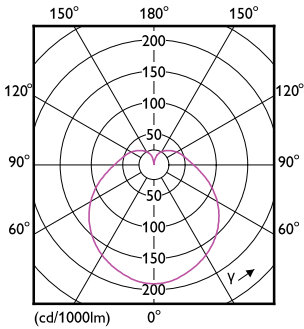
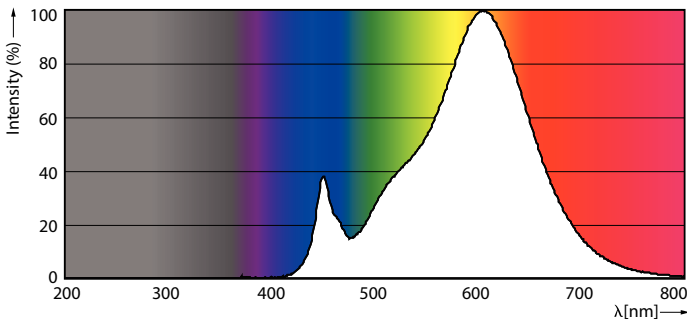
## Dimensional drawing



Product	D	A1	A2	A3
5.5PL-C/LED/13V/827/IF5/P/4P 20/1	45.7 mm	24.6 mm	101.6 mm	117.6 mm

PLED PLC-V 5-13W 550lm 2700K G24q

## Photometric data



LEDtube PLC 13V 5.5W G24Q 827 15D ND

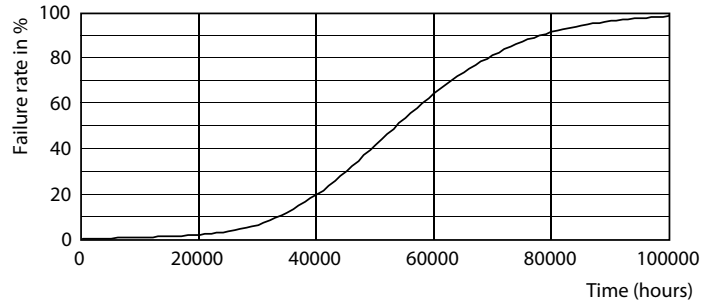
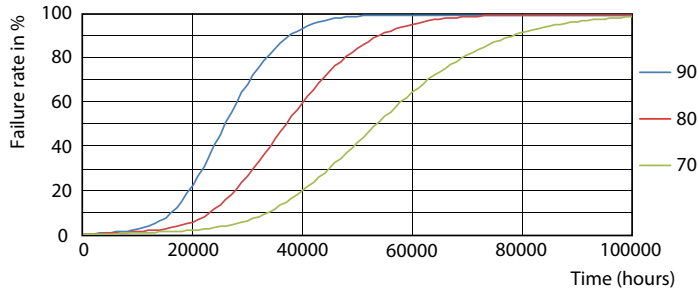
LEDtube PLC 13V 5W GX23-2 827 15D ND

General Uniform Lighting

Product Name	Quantity	Power (W)	Light Output (lm)	Beam Angle (°)	Mounting Type
LEDtube PLC 13V 5.5W G24Q 827 15D ND	1	5.5	550	120	...

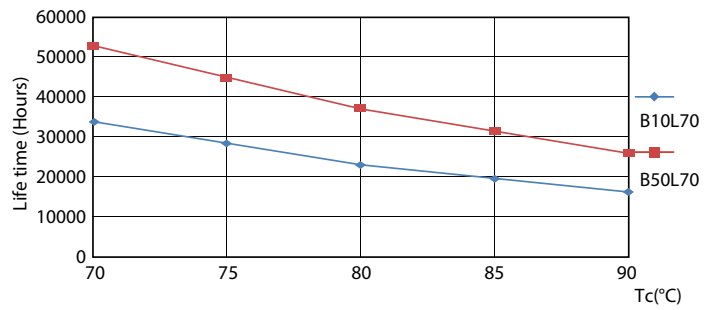
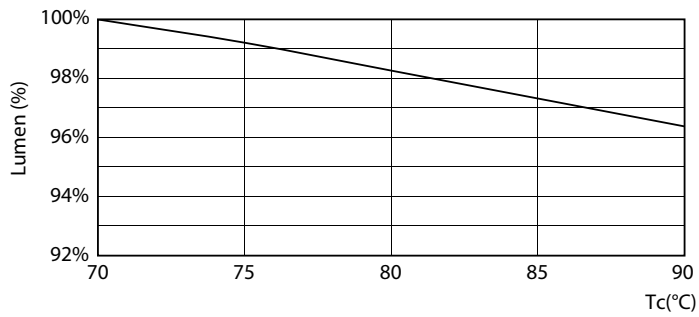
# LED InstantFit Lamps

## Lifetime



LEDtube PLC 13H 5W GX23-2 827 15D ND

LEDtube PLC 13H 5W GX23-2 827 15D ND



LEDtube PLC 13V 5.5W G24Q 827 15D ND

LEDtube PLC 13H 5W GX23-2 827 15D ND



LEDtube PLC 13H 5W GX23-2 827 15D ND

## LED InstantFit Lamps

