



**PASCO Specialty & Mfg., Inc.**

11156 Wright Road  
Lynwood, CA 90262  
Phone (310) 537-7782  
Fax (800) 737-2726

7529 Perryman Court  
Curtis Bay, MD 21226  
Phone (410) 360-5010  
Fax (877) 377-6466

www.pascospecialty.com

**TECHNICAL SPECIFICATION SUBMITTAL**

Wing nut expandable rubber test plug for very low water pressure testing

Job Name \_\_\_\_\_ Date \_\_\_\_\_

Model Specified \_\_\_\_\_ Quantity \_\_\_\_\_

Customer/Wholesaler \_\_\_\_\_

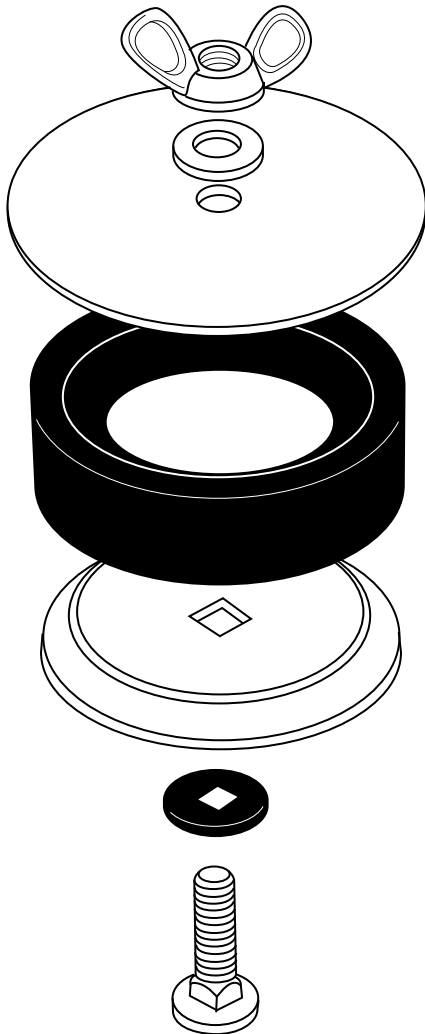
Contractor \_\_\_\_\_

Architect/Engineer \_\_\_\_\_

**Engineering Specification: An expandable wing nut driven rubber test plug with metal end plates to be used for low pressure water test, not to exceed 5 PSI on drain waste and vent plumbing systems.**

**DWV Plumbing Expandable Test Plugs**

- For water test only
- Synthetic rubber plug
- Nickel plated steel end plates
- Available in six sizes
- Non domestic manufacture



**Important: cannot be used on any DWV system where pressures exceed 5 psi**

PART NUMBER	SIZE			
	1"	1.142"	1.26"	1.3"
4801	1"	0.886"	1.26"	1.3"
4802	1-1/4"	1.142"	1.52"	1.3"
4803	1-1/2"	1.425"	1.862"	1.591"
4804	2"	1.913"	2.232"	1.594"
4806	3"	2.8"	3.465"	1.575"
4808	6"	3.787"	4.354"	1.528"