

# NetKey® Cabling System



**PANDUIT®**  
building a smarter,  
unified business foundation  
Connect. Manage. Automate.



## **NetKey® Cabling System**

The NetKey® Copper and Fiber Cabling System provides a complete, standards compliant cabling infrastructure solution for voice, data and video applications. NetKey® Modules feature the universal “keystone” design and are compatible with a wide assortment of modular patch panels, faceplates, and surface mount boxes. When teamed with complementary Panduit products, the NetKey® solutions cover all your needs from the telecommunication room to the work area with the proven innovation and quality you depend on from Panduit.



Panduit and General Cable™ offer a comprehensive line of contractor-grade connectivity and cabling solutions. This world-class partnership provides guaranteed network performance and system reliability for customer requirements.

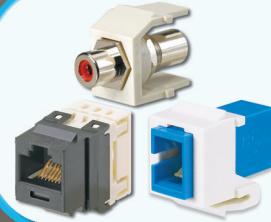
For the complete cable offering, reference the NetGen® Structured Cabling Solutions Brochure, NCCB56--SA-ENG.

NetGen is a registered trademark of General Cable Technologies Corporation and Panduit.

General Cable is a registered trademark of General Cable Technologies Corporation.

Panduit and NetKey are registered trademarks of Panduit Corp.





**NetKey® Modules**  
Pages 4 – 6 and 12 – 13



**NetKey® Patch Panels**  
Page 9



**NetKey® Copper and  
Fiber Patch Cords**  
Pages 4, 7 and 8



**NetKey® Faceplates and  
Surface Mount Boxes**  
Pages 10 and 11



**Racks and Cable  
Management**  
Page 19



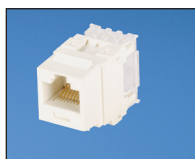
**Identification and  
Labeling Systems**  
Page 18

## NetKey® Category 6A, 6, 5e and 3 Jack Modules

- Meet all industry performance standards for Category 6A, 6, 5e and 3
- Punchdown jack modules are 100% performance tested and individually serialized for future traceability
- Meets ANSI/TIA 568-C.2 and ISO 11801 component requirements
- Snap in and out of keystone openings for easy moves, adds and changes
- Universal label includes T568A and T568B wiring schemes



NK6TMIW



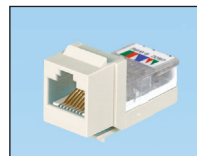
NK6X88MIW  
NK688MIW  
NKP5E88MIW



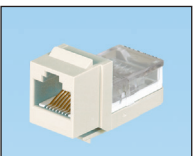
NK5E88MIWY



NK388MIWY



NK366UMIYW



NK366MIWY

Part Number	Description	Color
<b>NetKey® Category 6A UTP Jack Modules*</b>		
NK6X88MIW	Category 6A, component compliant, 8-position, 8-wire keystone punchdown jack module.	Off White
NK6X88MIW-Q	Convenience pack of 25, Category 6A, component compliant, 8-position, 8-wire keystone punchdown jack modules.	Off White
<b>NetKey® Category 6 UTP Jack Modules</b>		
NK6TMIW	Category 6, 8-position, 8-wire, keystone TP termination style jack module.	Off White
NK688MIW	Category 6, component compliant, 8-position, 8-wire, keystone punchdown jack module.	Off White
NK688MIW-Q	Convenience pack of 25, Category 6, component compliant, 8-position, 8-wire, keystone punchdown jack modules.	Off White
<b>NetKey® Category 5e UTP Jack Modules*</b>		
NKP5E88MIW	Category 5e, component compliant, 8-position, 8-wire, keystone punchdown jack module.	Off White
NKP5E88MIW-Q	Convenience pack of 25, Category 5e, component compliant, 8-position, 8-wire, keystone punchdown jack modules.	Off White
NK5E88MIWY	Category 5e, component compliant, 8-position, 8-wire, keystone leadframe jack module.	Off White
NK5E88MIW-Q	Convenience pack of 25, Category 5e, component compliant, 8-position, 8-wire, keystone leadframe jack modules.	Off White
<b>NetKey® Category 3 UTP Jack Modules**</b>		
NK388MIWY	Category 3, 8-position, 8-wire, keystone leadframe jack module.	Off White
NK366UMIYW	Category 3, 6-position, 6-wire, keystone leadframe jack module. Termination cap color-coded to USOC wiring scheme.	Off White
NK366MIWY	Category 3, 6-position, 6-wire, keystone leadframe jack module.	Off White

\*For standard colors replace color suffix with IW (Off White), EI (Electric Ivory), IG (International Gray), WH (White), BL (Black), BU (Blue), RD (Red), YL (Yellow), GR (Green), OR (Orange) or VL (Violet). To order convenience package of 25 jack modules, add -Q to end of part number.

\*\* For standard colors replace color suffix with IW (Off White), EI (Electric Ivory), IG (International Gray), WH (White) or BL (Black).

Termination tools found on page 13.

## NetKey® Copper UTP Patch Cords

- Meet all industry performance standards for Category 6A, 6 and 5e
- 100% performance tested
- Available in a variety of colors and lengths for design flexibility



NK6PC<sup>^\*Y</sup>  
NK6APC<sup>^\*</sup>



NK5EPC<sup>^\*Y</sup>

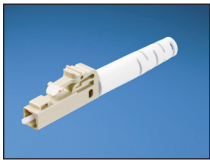
Part Number	Description
<b>Category 6A</b>	
NK6APC <sup>^*</sup>	Category 6A, UTP patch cord with modular plugs on each end.
<b>Category 6</b>	
NK6PC <sup>^*Y</sup>	Category 6, UTP patch cord with modular plugs on each end.
<b>Category 5e</b>	
NK5EPC <sup>^*Y</sup>	Category 5e, UTP patch cord with modular plugs on each end.

<sup>^</sup>Available in 3, 5, 7, 10, 14 and 20 foot lengths.

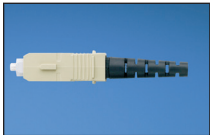
\*For standard colors other than Off White, add suffix BU (Blue), RD (Red), YL (Yellow) or GR (Green) before Y in the part number. For example, the part number of a blue, Category 6, 5-foot patch cord is NK6PC5BUY.

## NetKey® Fiber Optic Connectors

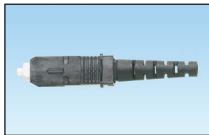
- Meets ANSI/TIA-568-C.3 requirements
- Insertion loss: 0.1dB typical (multimode), 0.2dB typical (singlemode)
- Return loss: >20dB (multimode), >40dB (singlemode)
- Each duplex plug includes housing, insert, two ferrule assemblies, two crimp sleeves, one boot for 3mm jacketed cable and two dust caps



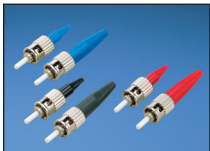
NKFLCSMWH



NKFSCMBL



NKFSCMPC5BL



NKFSTMABL<sup>^^</sup>



NKFSTMPC6EI

Part Number	Description
-------------	-------------

### LC Connectors - Pot and Polish Termination

NKFLCSMWH	LC 62.5/125µm multimode simplex connector. EI (Electric Ivory) body, WH (White) boot.
NKFLCSMBL	LC 50/125µm multimode simplex connector. EI (Electric Ivory) body, BL (Black) boot.
NKFLCSMAQ	LC 50/125µm OM3/OM4 multimode simplex connector. EI (Electric Ivory) body, AQ (Aqua) boot.
NKFLCSSWH	LC singlemode simplex connector. BU (Blue) body, WH (White) boot.

### SC Connectors - Pot and Polish Termination

NKFSCMWH	SC 62.5/125µm multimode simplex connector. EI (Electric Ivory) body, WH (White) boot.
NKFSCMBL	SC 50/125µm multimode simplex connector. EI (Electric Ivory) body, BL (Black) boot.
NKFSCMAQ	SC 50/125µm OM3/OM4 multimode simplex connector. EI (Electric Ivory) body, AQ (Aqua) boot.
NKFSCSWH	SC singlemode simplex connector. BU (Blue) body, WH (White) boot.

### SC Connectors - Pre-Polished Cam Termination

NKFSCMPC6EI	SC OptiCam® Composite Ferrule 62.5/125µm multimode simplex connector, Electric Ivory.
NKFSCMPC5BL	SC OptiCam® Composite Ferrule 50/125µm multimode simplex connector, Black.

### ST Connectors - Pot and Polish Termination

NKFSTMABL <sup>^^</sup>	ST multimode connector with Black boot (62.5/125µm or 50/125µm).
NKFSTSABU	ST singlemode connector with Blue boot.

### ST Connectors - Pre-polish Cam Termination

NKFSTMPC6EI	ST OptiCam® Composite Ferrule 62.5/125µm multimode simplex connector, Electric Ivory.
NKFSTMPC5BL	ST OptiCam® Composite Ferrule 50/125µm multimode simplex connector, Black.

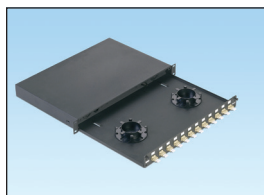
<sup>^^</sup>NKFSTMABL also available with red boot, replace BL (Black) in part number with RD (Red).



## NetKey® Fiber Enclosures

- Factory configured with 6 or 12 duplex LC or SC adapters for fast and easy cabling and installation
- Slide-out drawer slides forward a full 300mm for service access to all fiber terminations, connections, and/or splices

- Supports both field termination via pot-and-polish using Panduit® NetKey® Connectors, or fusion splicing with appropriate slack storage and cable management provisions
- Simple two-piece, all-metal body construction for easy and economical installation with no loose components to misplace; improved protection over plastic fiber drawers



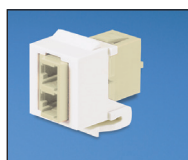
NKFD1W12EIDLC

Part Number	Description
<b>OM1 Duplex Adapters</b>	
NKFD1W12EIDSC	Pre-loaded fiber drawer with 12 SC duplex adapters for 62.5/125µm (OM1) multimode fiber.
NKFD1W24EIDLC	Pre-loaded fiber drawer with 24 LC duplex adapters for 62.5/125µm (OM1) multimode fiber.
<b>OM2 Duplex Adapters</b>	
NKFD1W12BLDSC	Pre-loaded fiber drawer with 12 SC duplex adapters for 50/125µm (OM2) multimode fiber.
NKFD1W24BLDLC	Pre-loaded fiber drawer with 24 LC duplex adapters for 50/125µm (OM2) multimode fiber.
<b>OM3/OM4 Duplex Adapters</b>	
NKFD1W12AQDSC	Pre-loaded fiber drawer with 12 SC duplex adapters for 50/125µm (OM3/OM4) multimode fiber.
NKFD1W24AQDLC	Pre-loaded fiber drawer with 24 LC duplex adapters for 50/125µm (OM3/OM4) multimode fiber.
<b>OS1/OS2 Duplex Adapters</b>	
NKFD1W12BUDSCZ	Pre-loaded fiber drawer with 12 SC duplex adapters for 9/125µm (OS1/OS2) multimode fiber.
NKFD1W24BUDLCZ	Pre-loaded fiber drawer with 24 LC duplex adapters for 9/125µm (OS1/OS2) multimode fiber.

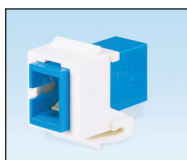
For 6 adapters per enclosure, replace 12 in part number with 6.

For 12 adapters per enclosure, replace 24 in part number with 12.

## NetKey® Fiber Optic Adapters



NKDLMIW



NKSCMZW



NKSTMIW



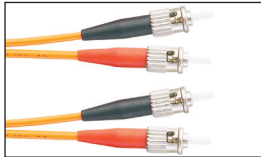
NKMJMIW

Part Number	Description	Color
<b>LC Adapters</b>		
NKDLMIW	Keystone module supplied with one LC Sr./Jr. SFF multimode duplex adapter with phosphor bronze split sleeves.	Off White
NKDLCMZW	Keystone module supplied with one LC Sr./Jr. SFF singlemode duplex adapter with zirconia ceramic split sleeves.	Off White
<b>SC Adapters</b>		
NKSCMIW	Keystone module supplied with one SC multimode simplex adapter with phosphor bronze split sleeve.	Off White
NKSCMZW	Keystone module supplied with one SC singlemode simplex adapter with zirconia ceramic split sleeve.	Off White
<b>ST Adapters</b>		
NKSTMIW	Keystone module supplied with one ST multimode simplex adapter with phosphor bronze split sleeve.	Off White
<b>MT-RJ Adapter</b>		
NKMJMIW	MT-RJ multimode duplex keystone adapter module.	Off White

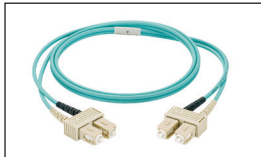
For standard colors other than IW (Off White), replace suffix with BL (Black), EI (Electric Ivory), IG (International Gray) or WH (White).

## NetKey® Fiber Optic Patch Cords and Pigtails

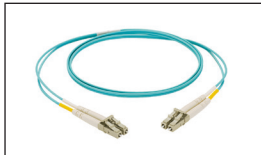
- Compliant with ANSI/TIA 568-C.3-1 and ISO/IEC 11801, TIA-604-5 (FOCIS-5), and UL 1666 (OFNR) flame rating
- Patch cords and pigtails include OM3 fiber or OM1, OM2, or OS1 fiber in 900µm tight-buffered fiber, 1.6mm or 3.0mm duplex zipcord jacketed cable or 1.8mm duplex zipcord jacketed cable
- 100% performance tested assures that patch cords and pigtails are standard compliant, Riser rated jacket meets UL 1666 (OFNR) flame rating for standard complaint safety
- Q.C. identification label quality control reference provides lifetime traceability of test data



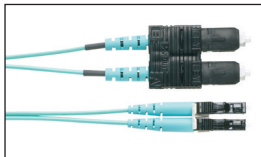
ST to ST Patch Cord



SC to SC Patch Cord



LC to LC Patch Cord

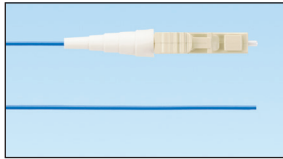


SC to LC Patch Cord

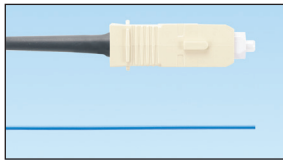
Part Number	Description
<b>ST to ST Patch Cords</b>	
NKFP623R22SM001	OM1 2 Fiber 3.0mm Riser Jacket Patch Cord ST to ST - 1 meter
NKFP523R22SM001	OM2 2 Fiber 3.0mm Riser Jacket Patch Cord ST to ST - 1 meter
NKFPX23R22SM001	OM3 2 Fiber 3.0mm Riser Jacket Patch Cord ST to ST - 1 meter
NKFP923R22SM001	OS2 2 Fiber 3.0mm Riser Jacket Patch Cord ST to ST - 1 meter
<b>SC to SC Patch Cords</b>	
NKFP623RSSSM001	OM1 2 Fiber 3.0mm Riser Jacket Patch Cord SC Duplex to SC Duplex - 1 meter
NKFP523RSSSM001	OM2 2 Fiber 3.0mm Riser Jacket Patch Cord SC Duplex to SC Duplex - 1 meter
NKFPX23RSSSM001	OM3 2 Fiber 3.0mm Riser Jacket Patch Cord SC Duplex to SC Duplex - 1 meter
NKFP923RSSSM001	OS2 2 Fiber 3.0mm Riser Jacket Patch Cord SC Duplex to SC Duplex - 1 meter
<b>LC to LC Patch Cords</b>	
NKFP62ERLLSM001	OM1 2 Fiber 1.6mm Riser Jacket Patch Cord LC Duplex to LC Duplex - 1 meter
NKFP52ERLLSM001	NK OM2 2 Fiber 1.6mm Riser Jacket Patch Cord LC Duplex to LC Duplex - 1 meter
NKFPX2ERLLSM001	NK OM3 2 Fiber 1.6mm Riser Jacket Patch Cord LC Duplex to LC Duplex - 1 meter
NKFP92ERLLSM001	NK OS2 2 Fiber 1.6mm Riser Jacket Patch Cord LC Duplex to LC Duplex - 1 meter
<b>SC to LC Patch Cords</b>	
NKFP62ERLSSM001	OM1 2 Fiber 1.6mm Riser Jacket Patch Cord LC to SC - 1 meter
NKFP52ERLSSM001	OM2 2 Fiber 1.6mm Riser Jacket Patch Cord LC to SC - 1 meter
NKFPX2ERLSSM001	OM3 2 Fiber 1.6mm Riser Jacket Patch Cord LC to SC - 1 meter
NKFP92ERLSSM001	OS2 2 Fiber 1.6mm Riser Jacket Patch Cord LC to SC - 1 meter

\*For standard meter lengths other than 1 meter (2, 3, 5 or 10), change the length designation in the part number to the desired length. For example, the part number for a 2 meter, ST to ST, OM1, riser, duplex patch cord is NKFP6GR022-2M02.

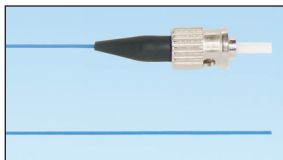
## NetKey® Fiber Optic Patch Cords and Pigtails (continued)



LC to Pigtail



SC to Pigtail



ST to Pigtail

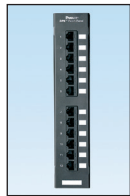
Part Number	Description
<b>LC Pigtails</b>	
NKFP61BN1NNM001	OM1 1 Fiber 900um Buffered Pigtail LC - 1 Meter
NKFP51BN1NNM001	OM2 1 Fiber 900um Buffered Pigtail LC - 1 Meter
NKFPX1BN1NNM001	OM3 1 Fiber 900um Buffered Pigtail LC - 1 Meter
NKFP91BN1NNM001	OS2 1 Fiber 900um Buffered Pigtail LC - 1 Meter
<b>SC Pigtail</b>	
NKFP61BN3NNM001	OM1 1 Fiber 900um Buffered Pigtail SC - 1 Meter
NKFP51BN3NNM001	OM2 1 Fiber 900um Buffered Pigtail SC - 1 Meter
NKFPX1BN3NNM001	OM3 1 Fiber 900um Buffered Pigtail SC - 1 Meter
NKFP91BN3NNM001	OS2 1 Fiber 900um Buffered Pigtail SC - 1 Meter
<b>ST Pigtail</b>	
NKFP61BN2NNM001	OM1 1 Fiber 900um Buffered Pigtail ST - 1 Meter
NKFP51BN2NNM001	OM2 1 Fiber 900um Buffered Pigtail ST - 1 Meter
NKFPX1BN2NNM001	OM3 1 Fiber 900um Buffered Pigtail ST - 1 Meter
NKFP91BN2NNM001	OS2 1 Fiber 900um Buffered Pigtail ST - 1 Meter

\*For standard meter lengths other than 1 meter (2, 3, 5 or 10), change the length designation in the part number to the desired length. For example, the part number for a 2 meter, MT-RJ to MT-RJ, patch cord, OM1, riser, duplex patch cord is NKFP6FR02F-FM02.



## NetKey® Patch Panels

- Mount to standard ANSI/TIA 19" racks
- Punchdown patch panels meet all industry performance standards for Category 6A, 6 and 5e
- Modular patch panels accept all NetKey® Modules
- Molded patch panels made of strong polymer material, with port numbering front and back
- Optional angled versions available for high density installations
- Strain relief bars assist in cable management and bend radius control
- Filler panels reserve space for future use and direct airflow



NK6PPG12WY  
NK5EPPG12WY



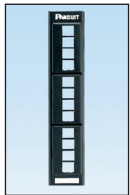
NK6XPPG24Y



NKA6XPPG24Y



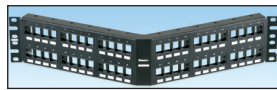
NKFP48Y



NKFP12W



NKFP24Y



NKPPA48FMY



WB89D



SRB19BLY



SRBM19BLY

Part Number	Description
<b>Punchdown Patch Panels*</b>	
<b>Category 6A</b>	
NK6XPPG24Y	Category 6A punchdown patch panel, 24 port, 1 RU.
NK6XPPG48Y	Category 6A punchdown patch panel, 48 port, 2 RU.
NKA6XPPG24Y	Category 6A angled punchdown patch panel, 24 port, 1 RU.
NKA6XPPG48Y	Category 6A angled punchdown patch panel, 48 port, 2 RU.
NK6XPP24P	Category 6A molded, flat, punchdown patch panel, 24 port, 1RU.
NK6XPP48P	Category 6A molded, flat, punchdown patch panel, 48 port, 2RU.

<b>Category 6</b>	
NK6PPG12WY	Category 6, 12-port punchdown patch panel. Mounts to wall with standard 89D bracket (WB89D).
NKA6PPG24Y	Category 6, 24-port, angled punchdown patch panel, 1 RU.
NKA6PPG48Y	Category 6, 48-port, angled punchdown patch panel, 2 RU.
NK6PPG24Y	Category 6, 24-port, punchdown patch panel, 1 RU.
NK6PPG48Y	Category 6, 48-port, punchdown patch panel, 2 RU.
NK6PP24P	Category 6, 24-port, molded punchdown patch panel, 1 RU.
NK6PP48P	Category 6, 48-port, molded punchdown patch panel, 2 RU.

<b>Category 5e</b>	
NK5EPPG12WY	Category 5e, 12-port punchdown patch panel. Mounts to wall with standard 89D bracket (WB89D).
NKA5EPPG24Y	Category 5e, 24-port, angled punchdown patch panel, 1 RU.
NKA5EPPG48Y	Category 5e, 48-port, angled punchdown patch panel, 2 RU.
NK5EPPG24Y	Category 5e, 24-port, punchdown patch panel, 1 RU.
NK5EPPG48Y	Category 5e, 48-port, punchdown patch panel, 2 RU.
NK5EPP24P	Category 5e, 24-port, molded punchdown patch panel, 1 RU.
NK5EPP48P	Category 5e, 48-port, molded punchdown patch panel, 2 RU.

\*Punchdown patch panels are color-coded for T568A and T568B wiring schemes. Punchdown tools found on page 13.

<b>Modular Patch Panels</b>	
NKFP12W	12-port modular patch panel with front removable faceplate. Mounts to wall with standard 89D bracket (WB89D).
NKFP24Y	24-port modular patch panel with front removable faceplate, 1 RU.
NKFP48Y	48-port modular patch panel with front removable faceplate, 2 RU.
NKPPA24FMY	24-port flush mount angled modular patch panel, 1 RU.
NKPPA48FMY	48-port flush mount angled modular patch panel, 2 RU.
NKPP24FMY	24-port flush mount modular patch panel, 1 RU.
NKPP48FMY	48-port flush mount modular patch panel, 2 RU.

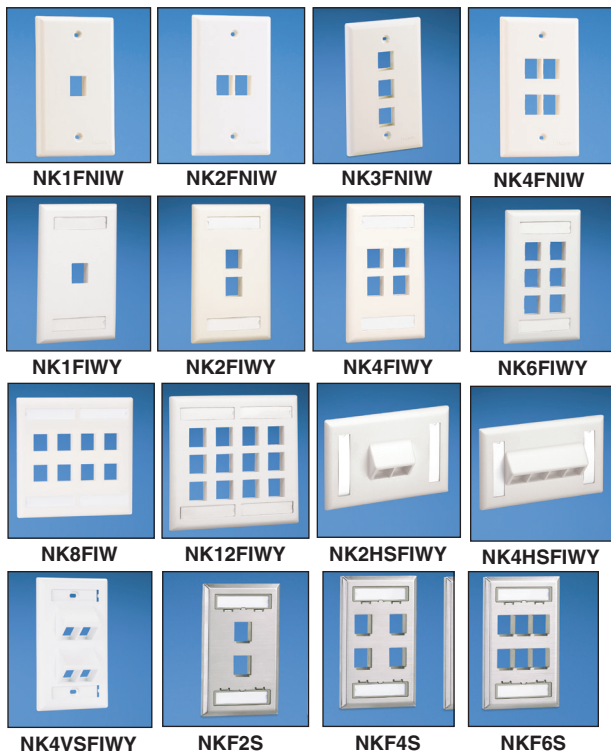
<b>Wall Mount Bracket</b>	
WB89D	Wall mount bracket. Ideal for use with 12-port punchdown or modular patch panels.

<b>Strain Relief Bars</b>	
SRB19BLY	Strain relief bar extends 2" from standard 19" rack for additional cable support.
SRBM19BLY	Strain relief bar and Tak-Ty® Hook & Loop Cable Ties for additional cable support.
SRBS19BL-XY	Straight strain relief bar.

## NetKey® Faceplates

- Accept all NetKey® Modules
- Available in a variety of port densities

- Optional labels for easy port identification



Part Number	Description	Color
<b>Flush Mount Screw-On Faceplates‡</b>		
NK <sup>*</sup> FNIW	Single gang, flush mount vertical faceplate.	Off White
NK <sup>**</sup> FIWY	Single or double gang, flush mount vertical faceplate with labels.	Off White
NK <sup>^</sup> HFSIWY	Single gang, sloped, horizontal faceplate with labels.	Off White
NK4VFSIWY	Single gang, 4-port, sloped, vertical faceplate with labels.	Off White

### Stainless Steel Faceplates

NK <sup>^</sup> AS	Single gang, stainless steel, vertical faceplate with labels.	Off White
--------------------	---	-----------

\*Available in 1, 2, 3 and 4-port density configurations.

\*\*Available in single gang 1, 2, 4, and 6-port density configurations and 8 or 12-port double gang port density configurations.

^Available in 2 or 4-port density configurations.

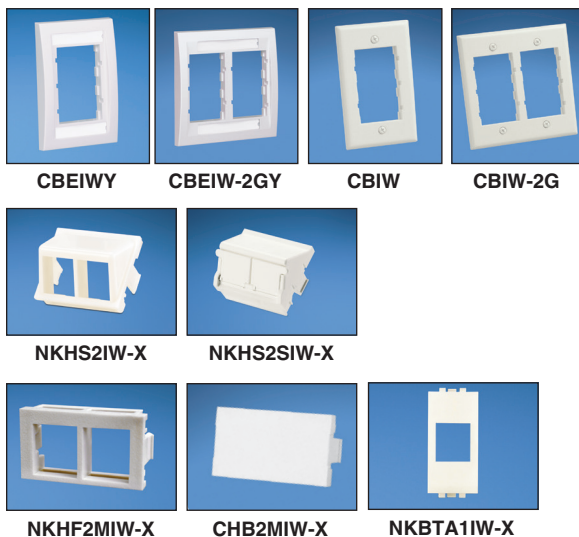
^^Available in 2, 4 or 6 port density configurations. When mounting, opening should be a minimum of 2" wide.

‡For standard colors other than IW (Off White), replace suffix with EI (Electric Ivory), WH (White), IG (International Gray) or BL (Black). NK2HSF\*\*Y and NK4HSF\*\*Y not available in BL (Black).

## NetKey® Faceplate Frames, Modular Inserts, and Adapter

- Inserts and faceplate frames enable design flexibility
- Accept all NetKey® Modules

- Available in a variety of port densities and orientation
- Optional labels for easy port identification



Part Number	Description	Color
<b>Executive Series Faceplate Frames</b>		
CBEIWY	Single gang faceplate frame accepts two 1/2 size modular inserts or three 1/3 size modular inserts. Supplied with labels and label cover/screw covers.	Off White
CBEIW-2GY	Double gang faceplate frame accepts four 1/2 size modular inserts or six 1/3 size modular inserts. Supplied with labels and label cover/screw covers.	Off White
<b>Classic Series Faceplate Frames</b>		
CBIW	Single gang faceplate frame accepts two 1/2 size modular inserts or three 1/3 size modular inserts.	Off White
CBIW-2G	Double gang faceplate frame accepts two 1/2 size modular inserts or six 1/3 size modular inserts.	Off White
<b>Modular Inserts</b>		
NKHS2IW-X	1/2 size, sloped modular insert. Accepts two NetKey® Modules.	Off White
NKHS2SIW-X	1/2 size, sloped, shuttered, modular insert. Accepts two NetKey® Modules.	Off White
NKHF2MIW-X	1/3 size flat modular insert. Accepts two NetKey® Modules.	Off White
CHB2MIW-X	1/3 blank modular insert reserves space for future use.	Off White
NKBTA1IW-X	Adapter accepts one NetKey® module, for Bticino Light series faceplates.	Off White

For standard colors other than IW (Off White), replace suffix with EI (Electric Ivory), WH (White), IG (International Gray) or BL (Black). Audio/Video inserts found on page 13.

## NetKey® Module Frames and Furniture Faceplate



NK2106MFIW



NK4106MFIW



NK2RMFIW



NK4RMFIW



NK4MFIW

Part Number	Description	Color
NK2106MFIW	Screw mount "106" duplex module frame. Accepts two NetKey® Modules.	Off White
NK4106MFIW	Screw mount "106" duplex module frame. Accepts four NetKey® Modules.	Off White
NK2RMFIW	Screw mount module frame. Accepts two NetKey® Modules. Compatible with standard NEMA outlet boxes and rectangular faceplates.	Off White
NK4RMFIW	Screw mount module frame. Accepts four NetKey® Modules. Compatible with standard NEMA outlet boxes and rectangular faceplates.	Off White
NK4MFIW	Snap on modular furniture faceplate. Accepts four NetKey® Modules.	Off White

For standard colors other than Off White, replace IW in part number with EI (Electric Ivory), WH (White), IG (International Gray) or BL (Black).

## NetKey® Phone Plate



KWPY



KWP3Y

Part Number	Description
KWPY	Stainless steel wall phone plate accepts one NetKey® Module.
KWP3Y	Stainless steel wall phone plate supplied with one Category 3 keystone leadframe module.
KWPS5Y	Stainless steel wall phone plate with one punchdown Category 5e keystone jack module.
KWP6P	Stainless steel wall phone plate with one punchdown Category 6 keystone jack module.

Wall mount faceplate kits compatible with wall mountable phones with short patch cord connections to the jack module.

## NetKey® Surface Mount Boxes

- Accept all NetKey® Modules
- Include mounting screws and adhesive tape

- Compatible with Panduit® LD3, LD5, and LD10 Raceway



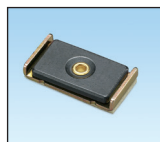
NK2BXIW-A



NK4BXIW-AY



NK6BXIW-AY



CBM-X

Part Number	Description	Color
NK2BXIW-A	Surface mount box accepts two NetKey® Modules.	Off White
NK4BXIW-AY	Surface mount box accepts four NetKey® Modules.	Off White
NK6BXIW-AY	Surface mount box accepts six NetKey® Modules.	Off White
CBM-X	Optional magnet for mounting on metal surfaces. Compatible with NK2BXIW-A and NK4BXIW-AY.	—

For surface mount box standard colors other than IW (Off White), replace suffix with EI (Electric Ivory), IG (International Gray) or WH (White).



## NetKey® Audio/Video Modules



NKFIW



NKBNMIW



NKRSBIW



NKRTMIW



NKRPMIW



NKSPMIW



NKSVCIW



NKBPBIW



NK35MSSIW



NK35MSCIW



NKHDMIW



NKUSBAAIW



NKBMIW-X

Part Number	Description	Color
<b>F-Type Module</b>		
NKFIW	Keystone module supplied with 75 ohm industry standard F-Type coax bulkhead coupler.	Off White
<b>50 Ohm BNC Coax Module</b>		
NKBNMIW	Keystone module supplied with 50 ohm industry standard coax bulkhead coupler.	Off White
<b>RCA Modules</b>		
NKRSM <sup>^</sup> IW	Keystone module supplied with RCA solder type connector. Inserts available in multiple colors.	Off White
NKRTM <sup>^</sup> IW	Keystone module supplied with RCA pass-through connector. Inserts available in multiple colors.	Off White
NKRPM <sup>^</sup> IW	Keystone module supplied with RCA punchdown connector. Inserts available in multiple colors.	Off White
<b>S-Video Modules</b>		
NKSPMIW	Keystone module supplied with SVHS punchdown connector.	Off White
NKSVCIW	Keystone module supplied with S-Video pass-through connector.	Off White
<b>5-Way Binding Post Module</b>		
NKBP <sup>^^</sup> IW	Keystone module supplied with 5-way binding post.	Off White
<b>3.5mm Stereo Connector</b>		
NK35MSSIW	Keystone module supplied with 3.5mm (1/8") stereo solder type headset connector.	Off White
NK35MSCIW	Keystone module supplied with 3.5mm (1/8") stereo headset coupler.	Off White
<b>HDMI Coupler</b>		
NKHDMIW	Keystone module supplied with one HDMI 1.3 Type A female to female coupler module.	Off White
<b>USB Coupler</b>		
NKUSBAAIW	Keystone module supplied with one USB 2.0 female A to female A coupler module.	Off White
<b>Blank Module</b>		
NKBMIW-X	Blank keystone module reserves space for future use.	Off White

<sup>^</sup>To designate insert color, replace <sup>^</sup> with R (Red), Y (Yellow) or W (White). RCA solder type module (NKRS<sup>^</sup>M<sup>^</sup>IW) also available with B (Black) insert.

<sup>^^</sup>To designate insert color, replace <sup>^^</sup> with R (Red) or B (Black).

For standard colors other than IW (Off White), replace suffix with EI (Electric Ivory), WH (White), IG (International Gray) or BL (Black). 5-Way Binding Post Module (NKBP<sup>^</sup>IW) only available in EI (Electric Ivory) and WH (White).

## NetKey® Audio/Video Inserts



CHR3RGBIW



CHR3WYRIW



CHD9CIWY



CHD15HDCIWY



CHD15HDSCIWY

Part Number	Description	Color
<b>RCA Inserts</b>		
CHR3RGBIW	1/3 insert supplied with three RCA pass-through couplers. Inserts are red, green and blue. Ideal for component video.	Off White
CHR3WYRIW	1/3 insert supplied with three RCA pass-through couplers. Inserts are white, yellow and red. Ideal for composite video or left/right stereo.	Off White
<b>D-Subminiature Inserts</b>		
CHD9CIWY	1/3 insert supplied with 9-pin female to female coupler.	Off White
CHD15HDCIWY	1/3 insert supplied with 15-pin female to female coupler. SVGA compatible.	Off White
CHD15HDSCIWY	1/3 insert supplied with 15-pin HD screw down DB connector mounted to printed circuit board. SVGA compatible.	Off White

For standard colors other than IW (Off White), replace suffix with EI (Electric Ivory), WH (White), IG (International Gray) or BL (Black). Faceplate frames found on page 10.

## Termination Tools



PDT110



NKSPB



CJT



CGJT



JR-PAN-2



FIELDKIT



FCAMKIT



FCLEANKIT

Part Number	Description
<b>Pan-Punch® Termination Tool</b>	
PDT110	Single pair punchdown tool and blade terminates and cuts UTP cable in one operation. Ideal for use with Pan-Punch® Punchdown System.
PDTH110	Replacement blade for single pair punchdown tool (PDT110).
<b>NetKey® Jack Module Termination Tools</b>	
JR-PAN-2*	Fluke** JackRapid Termination Tool for Category 6 and Category 5e NetKey® Punchdown Modules.
CJT-X	Termination tool for Category 3 NetKey® Leadframe Jack Modules.
CGJT	Terminates Giga-TX™ TP Style Jack Modules.
<b>Punchdown Base</b>	
NKSPB	Base used to assist in terminating punchdown modules.
<b>Fiber Termination Kit</b>	
FIELDKIT	Tools, consumables, installation instructions and stripping templates necessary for termination of all Panduit field polish connectors.
FCAMKIT	Tools, consumables, installation instructions and stripping templates for termination of all Panduit pre-polished can connectors.
FCLEANKIT	Replenishes the cleaning consumables required for termination of all fiber optic connectors.

\*Fluke JackRapid Termination Tool available through distribution. Contact Fluke customer service at 800-283-5853 to locate a local distributor. \*\*Fluke is a registered trademark of Fluke Corporation.

## Identification and Labeling Systems

- Variety of labeling systems and labels enable quick and easy network identification



LS8EQ-KIT



LS8EQ



LS8E



LS8E-KIT



TDP43ME



S100X150VAC  
and S100X150VA1Y

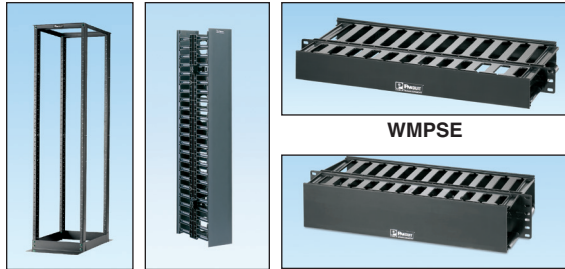
Part Number	Description
<b>PanTher™ LS8EQ and Cougar™ LS9Q Hand-Held Thermal Transfer Printers</b>	
LS8EQ-KIT-ACS	Includes LS8EQ printer with QWERTY keypad, one cassette of S100X150VAC self-laminating labels, six AA alkaline batteries, LS8E-ACS, LS8-CASE, LS8-PCKIT, LS8-IB, LS8-WS, quick reference card and operator's manual.
LS8EQ-KIT	Includes LS8EQ printer with QWERTY keypad, one cassette of S100X150VAC self-laminating labels, six AA alkaline batteries, LS8-CASE, LS8-PCKIT, LS8-IB, LS8-WS, quick reference card and operator's manual.
LS8EQ	Includes LS8EQ printer with QWERTY keypad, one cassette of S100X150VAC self-laminating labels, six AA alkaline batteries and quick reference card.
<b>PanTher™ LS8E Hand-Held Thermal Transfer Printer and Accessories</b>	
LS8E	LS8E printer, one cassette of self-laminating labels, six AA alkaline batteries and quick reference card.
LS8E-KIT	LS8E printer, one cassette of self-laminating labels, six AA alkaline batteries, rigid carrying case, LS8-PCKIT, LS8-IB, operator's manual and quick reference card.
S100X150VAC	Self-laminating, white vinyl label for use with LS8E printer.
<b>Thermal Transfer Desktop Printer and Accessories</b>	
TDP43ME	300 dpi printer; includes printer, Panduit® Easy-Mark™ Labeling Software, RMEH4BL hybrid black ribbon, AC power adapter with US power cord, USB cable, user manual, quick start card, and driver disk.
S100X150VA1Y	Self-laminating, white vinyl label for use with thermal transfer desktop printer.

For complete identification offering, reference the Panduit Physical Infrastructure Systems Catalog (SA-NCCB51) or visit [www.panduit.com](http://www.panduit.com).



## Racks and Cable Management

- Cable management products and accessories maintain bend radius control and cable performance while bundling and securing cable to prevent snags and stress from over bending



ER4P23

WMPV45E



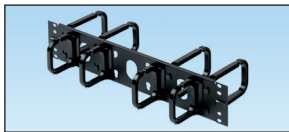
WMPSE



WMP1E



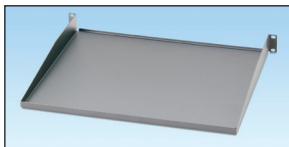
CMPH1



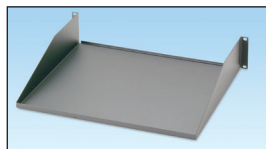
CMPH2



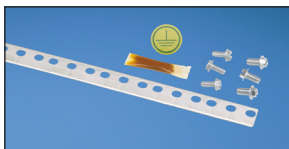
CMPHF1



SRM19FM1



SRM19FM2



RGS134-1Y



GPQC10-1/0



RGCBNJ660P22

Part Number	Description
ER4P23	4 post EIA rack with #12-24 threaded rails. Dimensions: 84.0"H x 20.3"W x 23.0"D (2134mm x 515mm x 584mm). 45 RU.
WMPV45E	NetRunner™ front and rear vertical cable manager with dual hinged cover, wire retainers and side mount brackets, 45 RU.
WMPSE	PatchLink™ front and rear horizontal cable manager with dual hinged cover, 1 RU.
WMP1E	PatchLink™ front and rear horizontal cable manager with dual hinged cover, 2 RU.
CMPH1	OpenAccess™ front and rear horizontal cable manager with optional snap on cover, 1 RU.
CMPH2	OpenAccess™ front and rear horizontal cable manager with optional snap on cover, 2 RU.
CMPHF1	OpenAccess™ front only horizontal cable manager with optional snap on cover, 1 RU.
SRM19FM1	Rack mount shelf, 30 lb. capacity, 1 RU.
SRM19FM2	Rack mount shelf, 50 lb. capacity, 2 RU.
RGS134-1Y	Rack grounding strip 78.65"L x 0.67"W x 0.05"D (2mm x 17mm x 1.27mm). Provided with 5cc of antioxidant, one grounding sticker, and three each M6 x 12mm and #12-24 x 1/2" thread-forming screws.
GPQC10-1/0	Access floor grounding clamp for 7/8" square, 1" round, and 1-1/8" round pedestals.
RGCBNJ660P22	Common bonding network to rack jumper kit. Provided with HTAP that bonds to MCBN sizes ranging from 16mm <sup>2</sup> - 25mm <sup>2</sup> .

For complete cable management and grounding/bonding offering, reference the Panduit Physical Infrastructure Systems Catalog (SA-NCCB51) or visit [www.panduit.com](http://www.panduit.com).

## Real-World Solutions

*With a proven reputation for excellence and innovation, Panduit and our partners work with you to overcome challenges and implement real-world solutions that create a competitive business advantage. Panduit offers the broadest range of solutions, from data centers and intelligent buildings to manufacturing operations, to help you build a **smarter, unified business foundation**.*



### Technology Leadership

Panduit develops innovative physical infrastructure solutions that meet the rapidly changing needs of our clients, from hardware and software to advisory services. This commitment is supported by investment in advanced research, solutions-focused product development, world-class manufacturing, and collaboration with customers at the forefront of technology.



### Partner Ecosystem

Our best-in-class partner ecosystem offers a comprehensive portfolio of services that span the project lifecycle, from planning and design to delivery, deployment, maintenance, and operation. Panduit business partners – distributors, and certified architects, consultants, engineers, designers, system integrators, and contractors – are qualified to help you achieve your objectives and realize predictable and measurable results.



### Strategic Alliances

Panduit cultivates long-term strategic alliances with industry leaders, including Cisco Systems, EMC, IBM, and Rockwell Automation, to develop, optimize, and validate solutions for our customers. This investment in people and resources helps solve our customers' greatest business challenges.



### Global Business Commitment

Panduit is committed to delivering a consistently high level of quality and service the world over. With a presence in more than 100 countries, local Panduit sales representatives and technical specialists offer guidance and support that bring value to your business. Our global supply chain, which includes manufacturing, customer service, logistics, and distribution partners, provides prompt response to your inquiries and streamlines delivery to any worldwide destination.



### Sustainability

With a commitment to environmental sustainability, Panduit develops and implements solutions that protect, replenish, and restore the world in which we live. This commitment is demonstrated by Panduit's LEED Gold certified World Headquarters, leveraging the Unified Physical Infrastructure<sup>SM</sup> approach to enable convergence of critical building systems to drive energy efficiency and ongoing operational improvement.

**Panduit Corp.**  
**World Headquarters**  
**Tinley Park, IL 60487**

[cs@panduit.com](mailto:cs@panduit.com)

**US and Canada: 800.777.3300**

**Europe, Middle East, and Africa:**  
**44.20.8601.7200**

**Latin America: 52.33.3777.6000**

**Asia Pacific: 65.6305.7575**

[www.panduit.com/NetKey](http://www.panduit.com/NetKey)

**PANDUIT®**