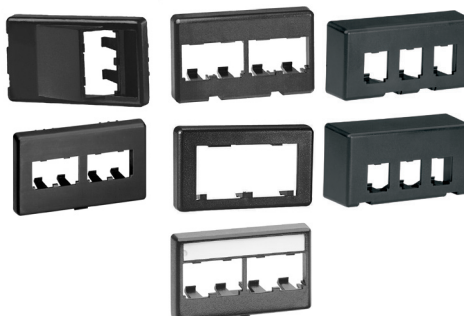


Mini-Com® Modular Furniture Faceplates

specifications

Modular furniture faceplates shall be available in multiple port densities, flat or sloped, with or without label pocket. Select furniture faceplates shall mount to standard and/or custom furniture openings depending on the furniture manufacturer it's compatible with. Furniture faceplates will accept any Mini-Com® Module.



technical information

Mounting options:	Standard sizes have industry standard TIA/EIA opening; custom sizes vary by furniture manufacturer: Standard openings: 1.345"-1.405"(H) x 2.67"-2.75"(W), maximum panel thickness of 0.09" CFFPHM4**: 1.88"-1.91"(H) x 2.98"-3.03"(W), maximum panel thickness of 0.09" CFFPKE3**: 1.60"(H) x 3.36"(W), maximum panel thickness of 0.04"
Packaging:	Versions with label include label and label cover

key features and benefits

Modular	Accepts all Mini-Com® Modules, which snap in and out for easy moves, adds, and changes
Bend radius control	Bend radius can be protected or improved by using a sloped design or the faceplate extender, which will add 0.5" to the in-wall depth
Identification	Select faceplates include label pockets with labels and label covers for easy identification of ports; optional adhesive labels available
Various port densities	Provides design flexibility

applications

The 2 and 4 position furniture faceplates (CFFP4BL, CFFPL4BL, CFFPL2BL, and CFFPA2BL) are used in work areas with modular furniture which have the TIA/EIA standard furniture outlet opening. Modular furniture manufacturers like Herman Miller[^] and Knoll^{^^} have custom openings for various models of furniture. The CFFPHM4BL can be

used with Herman Miller Action Office 2 and 3, and Baseline furniture series. Knoll Equity^{^^} furniture can utilize CFFPKE3BL, which is a 3-position furniture faceplate that is extended off the face of the furniture. Also offered is a comparable 3-position faceplate, CFFPE3BL, which adapts to Knoll's Morrison^{^^^} Series, in addition to the TIA/EIA standard opening.

[^]Herman Miller is a trademark of Herman Miller, Inc. Zeeland, MI.

^{^^}Knoll and Equity are registered trademarks of Knoll, Inc.

^{^^^}Morrison is a trademark of Knoll, Inc.

Modular Furniture Faceplates (for standard openings)

4 module space:	CFFP4BL
2 module space (with labels):	CFFPL2BL
4 module space (with labels):	CFFPL4BL
2 module space sloped:	CFFPA2BL
3 module space Knoll Morrison^{^^^}:	CFFPE3BL
4 module space Ultimate ID:	UICFFP4BL

Modular Furniture Faceplates (for custom openings)

4 module space Herman Miller[^]:	CFFPHM4BL CFFPEBSL4BL
3 module space Knoll Equity^{^^}:	CFFPKE3BL

Accessories

Modular furniture faceplate extender:	MFFPEBL
--------------------------------------------------	---------

(For use with CFFP4, CFFPL4, CFFPE3, and UICFFP4BL)

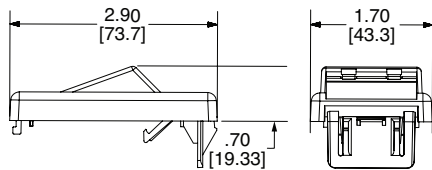
Replacement labels and label covers:	C4PPLK
-------------------------------------------------	--------

(For faceplates with labels)

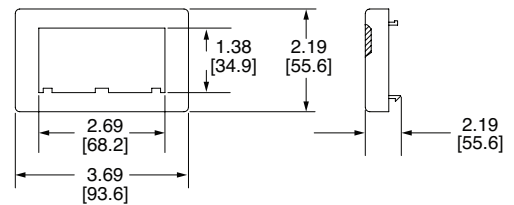
See table for color and labeling options.

Mini-Com® Modular Furniture Faceplates

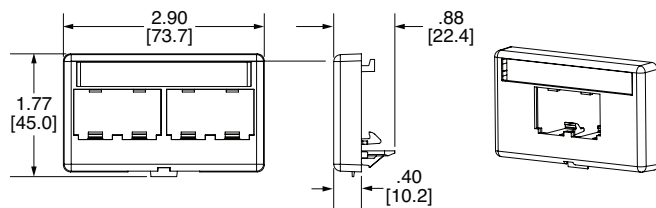
2 Module Space Sloped (CFFPA2)



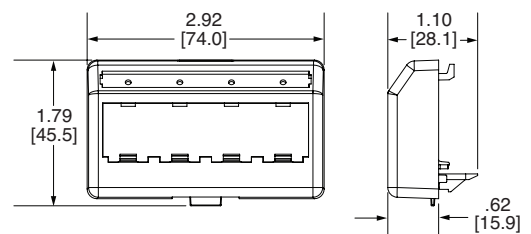
Extender (MFFPE)



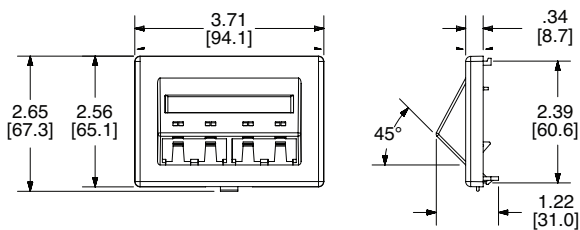
2 and 4 module space (CFFPL2, CFFP4, CFFPL4)



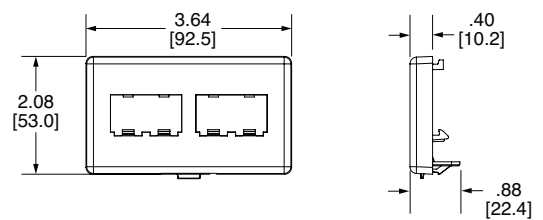
4 Module Space (UICFFP4)



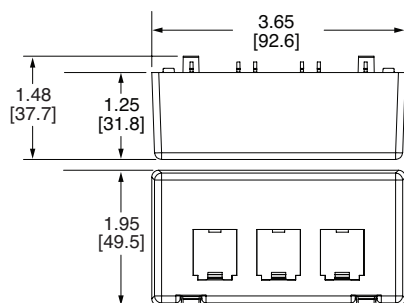
4 Module Space Sloped (CFFPEBSL4)



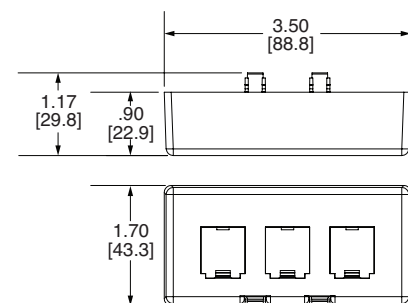
4 Module Space Herman Miller (CFFPHM4)



3 Module Space Knoll Equity (CFFPKE3)



3 Module Space Knoll Morrison (CFFPE3)



Mini-Com® Modular Furniture Faceplates

color and labeling options

Part Number	IW	WH	EI	IG	BL	Replacement Label	Laser/Ink jet	Panther LS8E
CFFP4**						N/A	C125X030FJJ	C125X030FJC
CFFPL2**						C4PPLK	C261X035Y1J	C261X035Y1C
CFFPL4**								
CFFPA2**						N/A	C125X030FJJ	C125X030FJC
UICFFP4**						UIWOL4	UILJ4	UILS8BW
MFFPE**						N/A		
CFFPE3BL							C061X030FJJ	C061X030FJC
CFFPKE3BL								
CFFPHM4**							C125X030FJJ	C125X030FJC
CFFPEBSL4BL						C4PPLK	C261X035Y1J	C261X035Y1C

Gray shaded areas depicts colors and labels are not available.

WORLDWIDE SUBSIDIARIES AND SALES OFFICES

PANDUIT US/CANADA
Phone: 800.777.3300

PANDUIT EUROPE LTD.
London, UK
Phone: 44.20.8601.7200

PANDUIT SINGAPORE PTE. LTD.
Republic of Singapore
Phone: 65.6305.7575

PANDUIT JAPAN
Tokyo, Japan
Phone: 81.3.6863.6000

PANDUIT LATIN AMERICA
Guadalajara, Mexico
Phone: 52.33.3777.6000

PANDUIT AUSTRALIA PTY. LTD.
Victoria, Australia
Phone: 61.3.9794.9020

For a copy of Panduit product warranties, log on to www.panduit.com/warranty



For more information
Visit us at www.panduit.com
Contact Customer Service by email: cs@panduit.com
or by phone: 800.777.3300

© 2020 Panduit Corp.
ALL RIGHTS RESERVED.
Printed in the U.S.A.
OTSP32--WW-ENG
Replaces WW-OTSP19
3/2020