

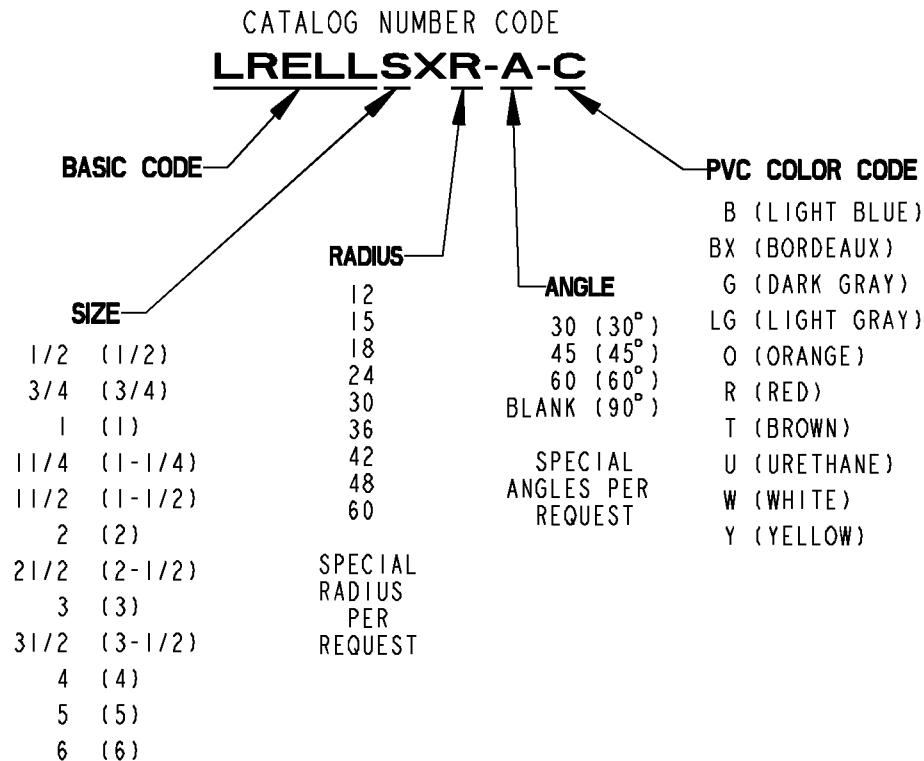
NOTES:

1. ELBOW/CONDUIT IS PVC COATED BLACK PIPE, HOT DIPPED GALVANIZED.
2. BLUE URETHANE COATING ON INTERIOR OF CONDUIT, .002" (2 MIL) NOMINAL.
3. PVC COATING ON EXTERIOR OF CONDUIT, .040" (40 MIL) MINIMUM.
4. BLUE URETHANE COATING OVER THREADS.
5. COLOR CODED THREAD PROTECTORS ON EACH END.

| GENERAL NOTES | | <div>Thomas & Betts</div> <div>www.tnb.com</div> | | | |
|----------------------------------|---|---|----------|-------------|--|
| 1. | ALL DIMENSIONS ARE FOR REFERENCE ONLY. | | | | |
| 2. | DIMENSIONS IN BRACKETS [] ARE IN METRIC UNITS. | | | | |
| REVISIONS | | <div>DESCRIPTION: PVC COATED LARGE RADIUS ELBOW</div> | | | |
| - | SEE ERN ***** FOR APPROVAL SIGNATURES & RELEASE DATE. PROJECT NO: ***** | | | | |
| ORIGINAL PROJECT NO / (ERN NO) | | SHEET NO: | REV. NO: | DRAWING NO: | |
| RM401877 / (2011409) | | 1 OF 3 | - | WSD-000553 | |

| CATALOG NUMBER | TRADE SIZE | OUTSIDE DIAMETER WITH PVC | WALL THICKNESS WITH PVC | COLOR THREAD PROTECTOR |
|----------------|------------|------------------------------|----------------------------|---------------------------|
| * LRELL1/2... | 1/2 [16] | .920 [23.4] | .134 [3.40] | BLACK |
| * LRELL3/4... | 3/4 [21] | 1.130 [28.7] | .139 [3.53] | RED |
| LRELL1... | 1 [27] | 1.395 [35.4] | .156 [3.96] | BLUE |
| LRELL1 1/4... | 1-1/4 [35] | 1.740 [44.2] | .156 [3.96] | RED |
| LRELL1 1/2... | 1-1/2 [41] | 1.980 [50.3] | .165 [4.19] | BLACK |
| LRELL2... | 2 [53] | 2.455 [62.4] | .172 [4.37] | BLUE |
| LRELL2 1/2... | 2-1/2 [63] | 2.955 [75] | .216 [5.49] | BLACK |
| LRELL3... | 3 [78] | 3.580 [90.9] | .229 [5.82] | BLUE |
| LRELL3 1/2... | 3-1/2 [91] | 4.080 [103.6] | .236 [5.99] | BLACK |
| LRELL4... | 4 [103] | 4.580 [116.3] | .246 [6.25] | BLUE |
| LRELL5... | 5 [129] | 5.643 [143.3] | .264 [6.70] | BLUE |
| LRELL6... | 6 [155] | 6.705 [170.3] | .287 [7.29] | BLUE |

* 1/2 & 3/4 PIPE TRADE SIZE UPON SPECIAL REQUEST.



Thomas & Betts
www.tnb.com

DESCRIPTION: **PVC COATED LARGE RADIUS ELBOW**

SHEET NO:

2 OF 3

REV. NO:

-

DRAWING NO:

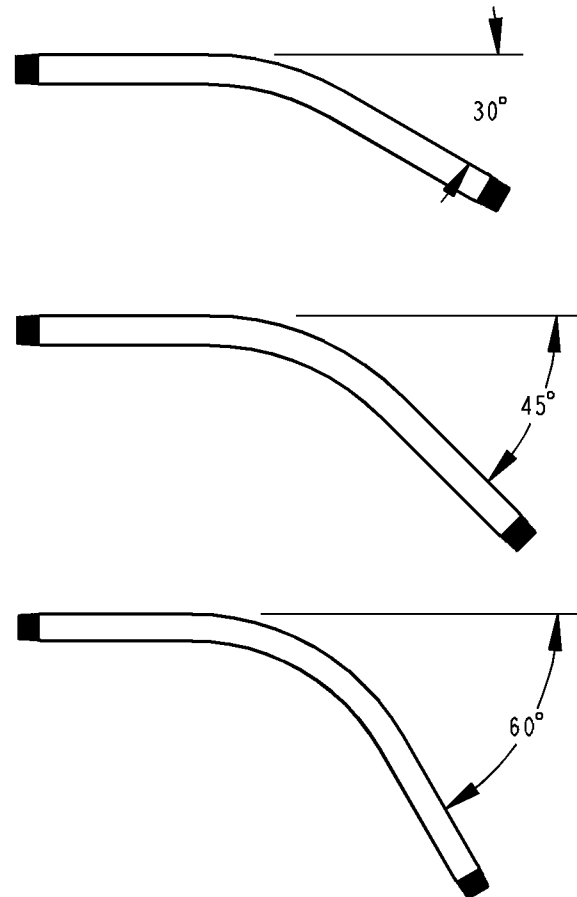
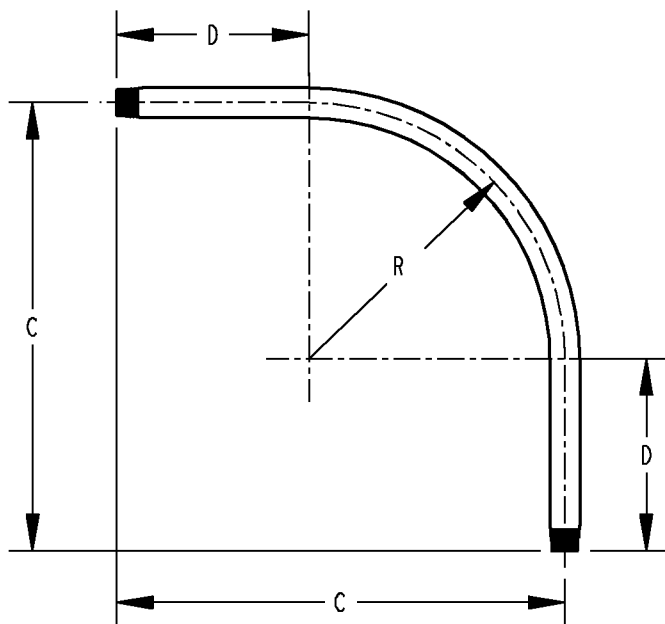
WSD-000553

| CATALOG NUMBER | TRADE SIZE | RADIUS "R" |
|----------------|------------|-----------------|
| * LRELL1/2... | 1/2 [16] | SPECIAL REQUEST |
| * LRELL3/4... | 3/4 [21] | SPECIAL REQUEST |
| LRELL1... | 1 [27] | 12" - 48" |
| LRELL1 1/4... | 1-1/4 [35] | 12" - 48" |
| LRELL1 1/2... | 1-1/2 [41] | 12" - 48" |
| LRELL2... | 2 [53] | 12" - 48" |
| LRELL2 1/2... | 2-1/2 [63] | 12" - 60" |
| LRELL3... | 3 [78] | 15" - 60" |
| LRELL3 1/2... | 3-1/2 [91] | 18" - 60" |
| LRELL4... | 4 [103] | 18" - 60" |
| LRELL5... | 5 [129] | 30" - 60" |
| LRELL6... | 6 [155] | 30" - 60" |

* 1/2 & 3/4 PIPE TRADE SIZE UPON SPECIAL REQUEST.

| RADIUS "R" | OFFSET "C" | STRAIGHT END "D" |
|--------------|------------------|------------------|
| 12 [304.80] | 1' 9" [533.40] | 9" [228.60] |
| 15 [381.00] | 2' 0" [609.60] | 9" [228.60] |
| 18 [457.20] | 2' 4" [711.20] | 10" [254.00] |
| 24 [609.60] | 2' 11" [889.00] | 11" [279.40] |
| 30 [762.00] | 3' 5" [1041.40] | 11" [279.40] |
| 36 [914.40] | 3' 11" [1193.80] | 11" [279.40] |
| 42 [1066.80] | 4' 6" [1371.60] | 12" [304.80] |
| 48 [1219.20] | 5' 0" [1524.00] | 12" [304.80] |
| 60 [1524.00] | 6' 0" [1828.80] | 12" [304.80] |

OFFSET "C" APPLICABLE ONLY TO 90° ELBOW.



Thomas & Betts
www.tnb.com

DESCRIPTION: **PVC COATED LARGE RADIUS ELBOW**

SHEET NO:

3 OF 3

REV. NO:

-

DRAWING NO:

WSD-000553