

WYU/YU Type Inside Flanged Recessed Cover Boxes

Raintight, Dust-Tight

Cast Iron Box for Flush Mounting.

NEC/CEC:
NEMA/CSA Type 1, 2, 3, 3R, 3S, 4, 5, 12, 12K,
13

CEC:
Class II, Division 1 and 2
Class III

Applications

- These boxes are listed by Underwriters Laboratories and Canadian Standards Association as Type 3R.
- They are suitable for use indoors, outdoors, or where subject to rain, dripping or splashing water.
- Recessed cover boxes designed for flush mounting in masonry.
- They are furnished with a plain cover as shown but can be supplied with checkered steel plate covers suitable for foot traffic (see options).

Features

- Neoprene gasket – between cover and box.
- Wide selection of sizes and locations for drilled-and-tapped and slip-hole conduit entrances.

Standard Materials

- Box and cover: cast iron
- Gasket: neoprene
- Screws: stainless steel

Standard Finishes

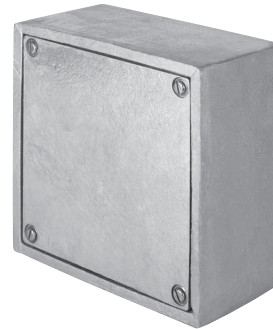
- Box and cover: hot dip galvanized

Options

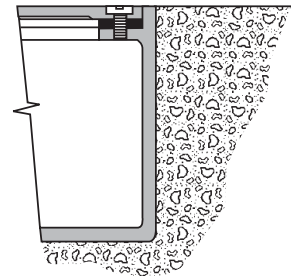
- Checkered steel plate covers suitable for pedestrian traffic, add suffix **-CS**.
- See optional hinges below.
- For additional options see *Ordering Information* pages.

NEC/CEC Certifications and Compliances

- UL Standard: UL 514A, UL 50, UL 50E
- UL Listed: E24824
- CSA Standard: C22.2 No. 18.1, C22.2 No. 94.1, C22.2 No. 94.2, C22.2 No. 25
- CSA Certified: 020945



Installation in Concrete



Inside Dimensions Millimeters (Inches)					Approximate Wall Thickness ① mm (in)	Appleton Catalog Number	O-Z/Gedney Catalog Number
L	x	W	x	D			
101.6 (4.00)	x	101.6 (4.00)	x	101.6 (4.00)	6.35 (0.2500)	WYU-040404	YU-040404
152.4 (6.00)	x	152.4 (6.00)	x	152.4 (6.00)	7.94 (0.3125)	WYU-060606	YU-060606
203.2 (8.00)	x	203.2 (8.00)	x	152.4 (6.00)	7.94 (0.3125)	WYU-080806	YU-080806
304.8 (12.00)	x	304.8 (12.00)	x	152.4 (6.00)	7.94 (0.3125)	WYU-121206	YU-121206

Optional Hinges (Stainless Steel, Butt Type)

Hinges Per Set	Box Size	Appleton Catalog Number	O-Z/Gedney Catalog Number
2	Up to 304.8 x 304.8 mm (12" x 12")	AHNG-22SS	HNG-22SS

① Measured 50.8 mm (2.00") up from back of box.