

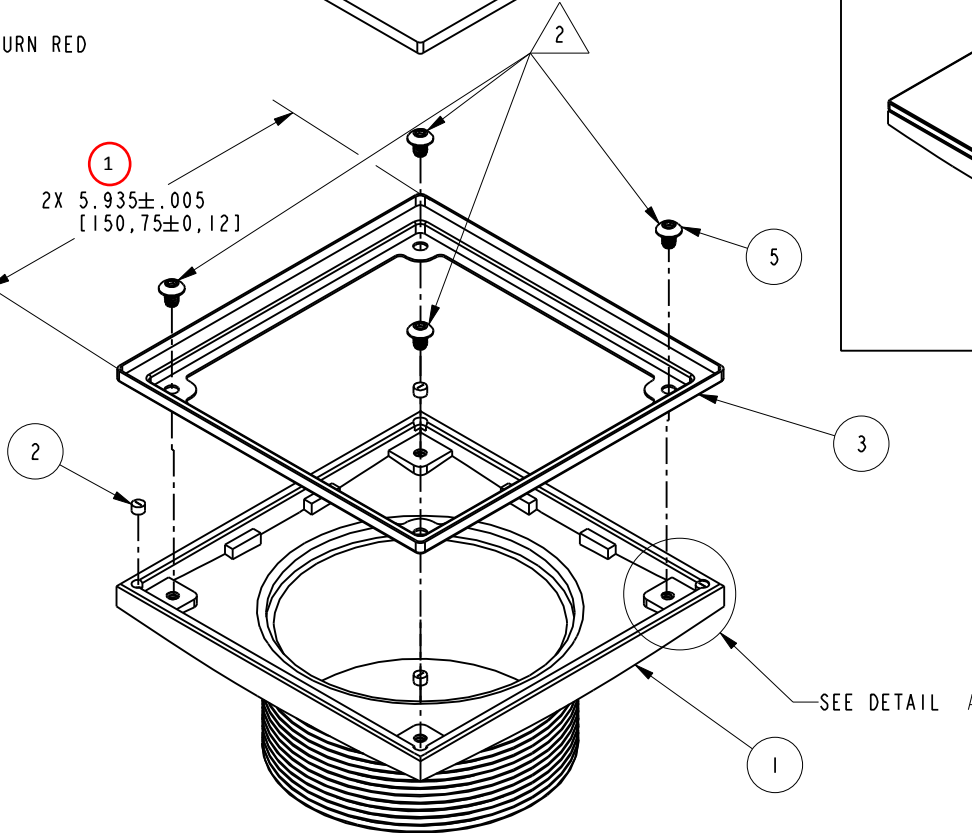
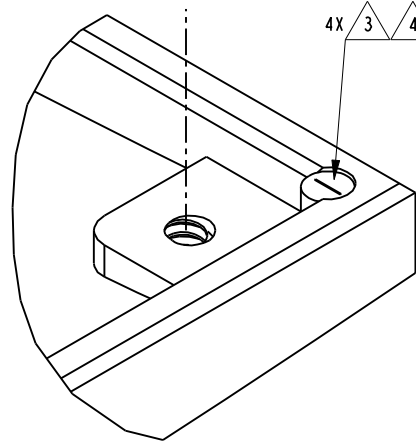
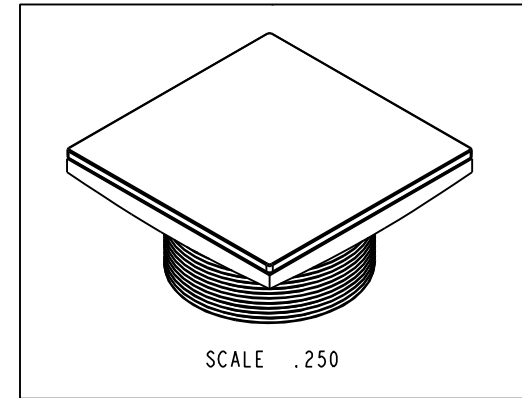
NOTES:

- (N1) 1. FIT / FORM / FUNCTION SHALL FOLLOW PS-E.008.
- (N2) 2 TORQUE REQUIRED TO TIGHTEN THE SCREWS 24-26 LB-IN
- (N3) 3 APPLY DOW CORNING 700 SILICONE
- (N4) 4 ENSURE TO INSTALL MAGNETS WITH NEGATIVE "--" MARKED SIDE FACING UP
TEST POLARITY UPON ASSEMBLY:
THE TESTER SHOULD SHOW " N" AND LIGHT SHOULD TURN RED

jim
06/22/2016
to seal magnets
from moisure

BILL OF MATERIAL (CURRENT LEVEL)

ITEM	PT/ASSY	DESCRIPTION	TYPE	QTY.
1	50969	6" SQUARE DRAIN THROAT	PART	1
2	92523	SUPPER DISK MAGNET	PART	4
3	50956	6" SQUARE DRAIN FLANGE	PART	1
4	50955	PROTECTIVE COVER 6"	PART	1
5	92498	SCRW, 10-24 X 1/4 SKT BUTTON HD SS	PART	4



-	F	EN-2854	12/31/15	J.M
-	E	EN-2828	10/24/14	-
-	D	EN-2401	01/04/13	-
-	C	EN-2380	12/13/12	-
-	B	EN-2228	07/26/12	-
-	A	EN-2144	04/18/12	-
-	-	EN-1714	03/06/12	-
ZONE	REV	DESCRIPTION	DATE	APPROVED

COPYRIGHT 2005 BRASSTECH, INC.
THESE DRAWINGS AND THE DESIGNS
DEPICTED HEREIN ARE THE PROPRIETARY
PROPERTY OF BRASSTECH. ANY USE
OR REPRODUCTION IS SUBJECT TO
THE EXPRESS APPROVAL OF BRASSTECH.
UNAUTHORIZED USE IS STRICTLY
PROHIBITED. ALL RIGHTS RESERVED.

TESTING	-	-	-
ASSEMBLY	-	-	-
PLATING	-	278-02	278-02
POLISHING	-	NEXT ASSY	USED ON
MACHINING	-	APPLICATION	
TOOLING	FIXTURE #	REMOVE ALL BURRS AND SHARP EDGES	

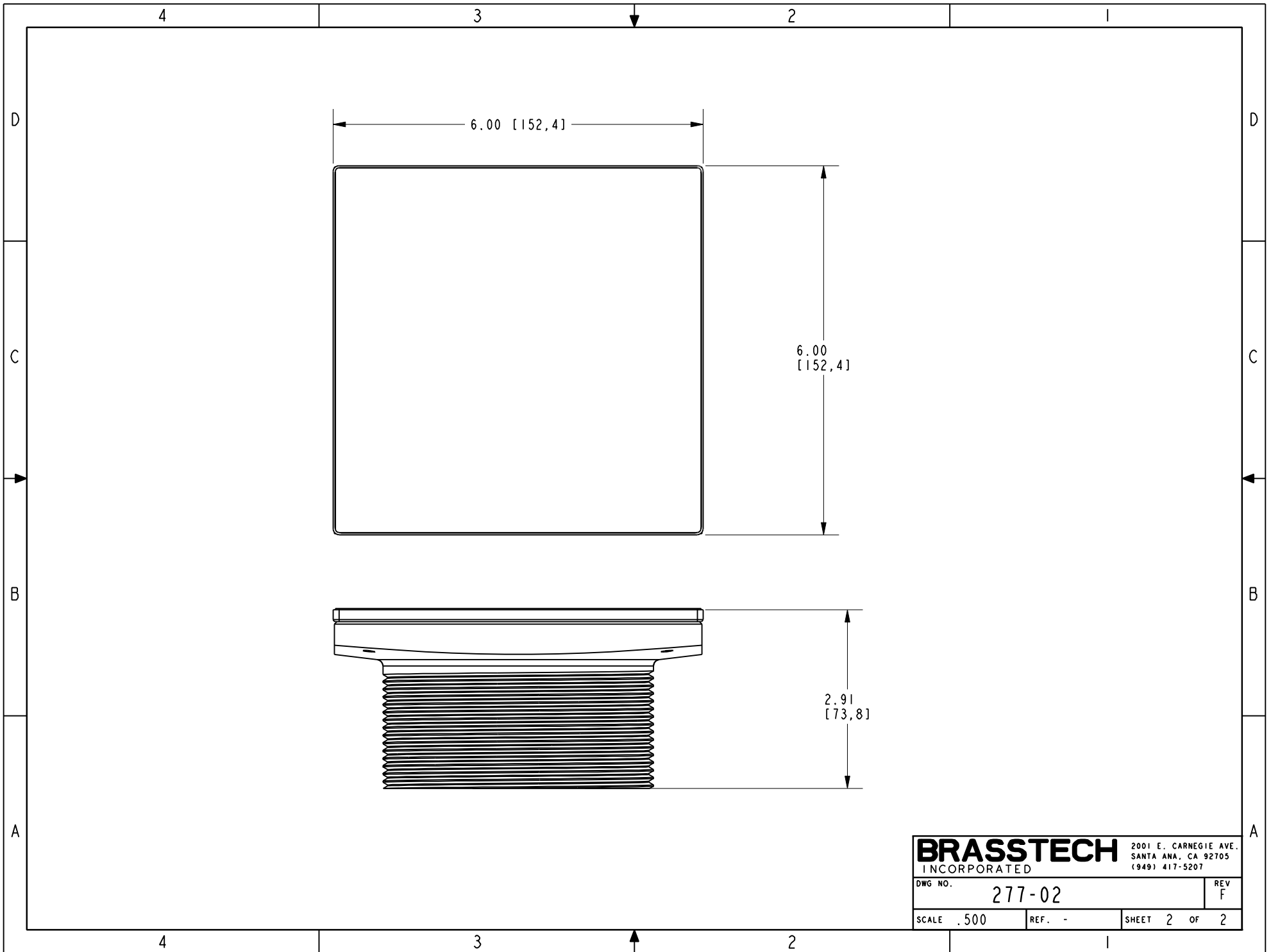
UNITS ARE: INCHES [MM]			
TOLERANCES ARE:			
FRACTIONS	DECIMALS	ANGLES	
±1/16"	.X ±.1 [2,5]	±1°	
	.XX ±.06 [1,5]		
(X.XXX) DENOTES CRITICAL DIMS. ALL THREADS ARE CRITICAL			
DRAWN	JINSON	12/31/15	
CHECKED	RAVINDRA	12/31/15	
APPROVED	J.M	12/31/15	

BRASSTECH 2001 CARNEGIE AVE.
INCORPORATED SANTA ANA, CA 92705
(949) 417-5207

6" THROAT WITH 4" IPS
OUTLET

DWG NO. 277-02 REV F

SCALE .375 REF. - SHEET 1 OF 2



BRASSTECH		2001 E. CARNEGIE AVE.	
INCORPORATED		SANTA ANA, CA 92705	
		(949) 417-5207	
DWG NO.	277-02	REV	F
SCALE .500	REF. -	SHEET 2	OF 2