

INSDR/DR7/DS7 G

Meltric Corporation / 4765 W. Oakwood Park Drive Franklin, WI 53132
Tel.: 800 433 7642 / Fax: 414 433 2701 / e-mail: mail@meltric.com

A manufacturer of products using Marechal technology



GENERAL

Meltric's DR, DR7c and DS7c series industrial plugs and receptacles are designed to ensure user safety and provide reliable connections. Please follow the instructions below to ensure the proper installation and use of the product.

WARNING There are inherent dangers associated with electrical products. Failure to follow safety precautions can result in serious injury or death. These instructions must be followed to ensure the safe and proper installation, operation and maintenance of the Meltric devices. Before installation, disconnect all sources of power to the circuit to eliminate the risk of electrical shock.

RATINGS

These products are manufactured and rated in compliance with applicable UL and CSA standards. The products ratings are indicated on the device labels. Some DR, DR7 and DS7 devices are provided with optional auxiliary contacts that make after and break before the phase contacts. The ratings for auxiliary contacts are shown in Table 1.

| Table 1 - Auxiliary Contact Ratings | | | | |
|-------------------------------------|--------|--------|----------------|--------|
| Device | 120VAC | 240VAC | 480VAC | 600VAC |
| DR30, DR50, DR100 | 6A | 3A | 1.5A | 1.2A |
| DR150, DR400 | 1.5A | 0.75A | .375A | .30A |
| DR225, DR250 | 3A | 1.5A | .75A | 0.6A |
| DS7c | — | — | 5A (400V max)* | — |
| DR7c | — | 5A* | — | — |

* Rating is not UL or CSA listed

INSTALLATION

These products should be installed by qualified electricians in accordance with all applicable local and national electrical codes.

Before starting, verify that the power is off, that the product ratings are appropriate for the application, and that the conductors meet code requirements and are within the capacities of the terminals noted in Table 2.

| Table 2 - Wiring Terminal Capacity ¹ (in AWG) | | | | Cable Range OD | |
|--|---------------|---------|----------------------------|----------------|---------------------|
| Device | Main Contacts | | Aux. Contacts ² | Min | Max Blue Casings |
| | Min | Max | Max | | |
| DR30 | 14 | 8 | 14 | .30 | 1.38 |
| DR50 | 14 | 4 | 14 | .51 | 1.38 |
| DR100 | 10 | 2 | 14 ³ | .50 | 1.81 |
| DR150 | 4 | 2/0 | 14 ³ | .50 | 1.81 |
| DR250 | 4 | 4/0 | 14 ³ | .87 | 2.40 |
| DR400 ⁴ | 2 | 350 MCM | 14 ³ | 2.09 | 2.87 |
| DS7c/DR7c | 14 | 8 | 10 | .50 | 1.81 |

¹ Capacity is based on THHN wire sizes

² Auxiliary contacts are optional and may not be on all products.

³ Auxiliary contacts are wired at the factory.

⁴ Use with 75 degree C wire.

General Notes & Precautions

- Self-tapping screws are provided for use with some polymeric accessories. High torque may be required to drive them in. Once they are seated, care should be taken in order to avoid over-tightening them against the plastic material.
- Various handles and cord grip options may be used. These instructions are based on handles provided with integral multi-layer bushing cord grips.
- Wire strip lengths are indicated in Table 3. Strip lengths for cable sheathing will depend on the specific application. When used with handles, the cable sheathing should extend into the handle to ensure secure cord gripping.



| Table 3 - Wire Strip Lengths – Dimensions A | | | | | |
|---|--------|------------|----|------------|----|
| Device/Contact | | Receptacle | | Plug/Inlet | |
| | | Inches | mm | Inches | mm |
| DR30 | Phase | 7/16 | 11 | 3/4 | 19 |
| | Auxil. | 1/2 | 13 | 3/4 | 19 |
| DR50 | Phase | 9/16 | 14 | 7/8 | 22 |
| | Auxil. | 1/2 | 13 | 5/8 | 16 |
| DR100 | Phase | 15/16 | 24 | 15/16 | 24 |
| DR150 | Phase | 1 3/16 | 30 | 1 3/16 | 30 |
| DR250 | Phase | 1 3/16 | 30 | 1 3/16 | 30 |
| DR400 | Phase | 2 3/8 | 60 | 2 3/8 | 60 |
| DS7c/DR7c | Phase | 1 1/16 | 27 | 1 1/16 | 27 |
| DS7c/DR7c | Auxil. | 5/8 | 16 | 5/8 | 16 |

- Wiring terminals are spring assisted to prevent loosening due to wire strand settlement, vibration and thermal cycling. **NOTICE:** They should not be over-tightened. Appropriate tools and tightening torques are indicated in Table 4.

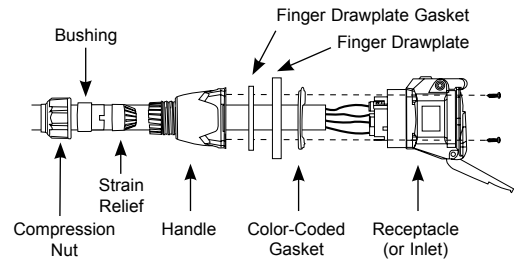
| Table 4 - Terminal Screw Tightening Torques | | | | |
|---|--------|--------|------|---|
| Device/Contact | | Torque | | Required Screwdriver or Allen Wrench |
| | | in-lbs | N-m | |
| DR30 | Phase | 15 | 1.7 | 4 mm or 3/16" precision tip |
| | Auxil. | 13 | 1.5 | 4 mm or 3/16" precision tip |
| DR50 | Phase | 15 | 1.7 | 5 mm or 3/16" precision tip |
| | Auxil. | 7 | .8 | 3 mm or 1/8" precision tip |
| DR100 | Phase | 48 | 5.4 | 4 mm hex head |
| DR150 | Phase | 90 | 10.2 | 4 mm hex head |
| DR250 | Phase | 130 | 14.7 | 5 mm hex head |
| DR400 | Phase | 90 | 10.2 | 4 mm hex head |
| DS7c/DR7c | Phase | 16 | 1.8 | 3.5 mm or 1/8" precision tip |

- NOTICE:** Meltric threaded handles come with tapered style threads. The use of fitting seal tape is recommended to maintain watertightness of all NPT fittings and joints.

Assembly for In-Line Connections

- Do not overtighten terminal or self-tapping screws. Tighten screws to the proper torque to ensure a secure connection.

When these products are used as in-line connectors, finger drawplates (or a drawbar mechanism) should be installed on both the receptacle and plug in order for the user to more easily provide the leverage required to connect the device.

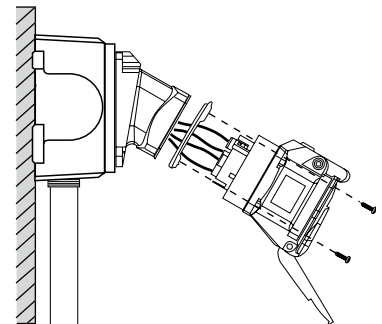


Adjust the bushing diameter to fit the cable by removing inner sections of it as required. Insert the bushing into the strain relief, then insert the assembly into the handle and loosely install the compression nut. Insert the cable through the handle, the thin black drawplate gasket and finger drawplate (if applicable) and the color coded gasket. Strip the cable sheath to provide a workable wire length, being mindful that the sheath must extend into the handle to achieve a secure cord grip. Then strip the individual wires to the lengths indicated in Table 3 and twist the strands of each conductor together. Back out the terminal screws on the receptacle (or inlet) far enough (but not completely) to allow the conductors to pass, insert the conductors fully into their respective terminals and tighten the terminal screws with the appropriate tool to the torque indicated in Table 4.

Verify that the cable sheath extends beyond the strain relief and into the handle. Assemble the receptacle (or inlet), the color coded gasket, the finger drawplate, and the thin black drawplate gasket to the handle with the four self-tapping screws provided. Adjust the cable location so that it will not be under tension inside the handle and tighten the compression nut to secure the cable.

Assembly for Mounted Receptacles (or Inlets)

In applications where the receptacles (or inlets) are mounted to wall boxes, panels or other equipment, optimal operation is achieved when the device is installed with the latch at the top.



Insert the cable or wires through the wall box and cut to allow adequate length, strip the cable sheath as desired, strip the individual wires to the lengths indicated in Table 3, and twist the strands of each conductor together. Back out the terminal screws on the receptacle (or inlet) far enough (but not completely) to allow the conductors to pass, insert the conductors fully into their respective terminals and hand tighten the terminal screws to the torque indicated in Table 4.

Assemble the receptacle (or inlet) and the color-coded gasket to the box with the appropriate hardware. Assemble the mating plug (or receptacle) to the cord end as indicated in the assembly instructions above for in-line connections, except there will be no finger drawplate or associated black gasket.

Hole Pattern for Custom Mounting

In applications where custom mounting to a panel or box is desired, the clearance and mounting holes should be drilled as indicated in the following diagram and Table 5.

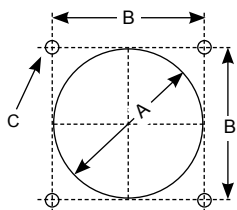


Table 5 - Custom Mounting Dimensions

| Model | 'A' | | 'B' | | 'C' | |
|-----------|--------|-----|--------|----|--------|-----|
| | Inches | mm | Inches | mm | Inches | mm |
| DR30 | 2.25 | 57 | 1.89 | 48 | .19 | 5 |
| DR50 | 2.50 | 64 | 2.17 | 55 | .19 | 5 |
| DR100 | 3.25 | 83 | 2.59 | 66 | .22 | 5.5 |
| DR150 | 4.00 | 102 | 3.20 | 81 | .22 | 5.5 |
| DR250 | 4.50 | 114 | 3.86 | 98 | .28 | 7 |
| DR400 | 4.50 | 114 | 3.86 | 98 | .28 | 7 |
| DS7c/DR7c | 3.25 | 83 | 2.59 | 66 | .22 | 5.5 |

OPERATION



To ensure safe and reliable operation Meltric plugs and receptacles must be used in accordance with their assigned ratings.

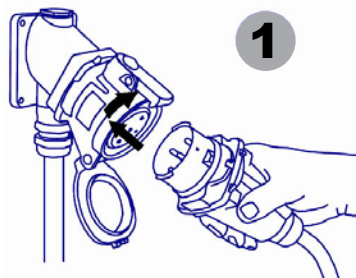
Meltric plugs can only be used in conjunction with mating receptacles or plugs manufactured by Meltric or another licensed producer of products bearing the **Marechal**™ technology trademark.

Meltric plugs & receptacles are designed with different keying arrangements, so that only plugs and receptacles with compatible contact configurations and electrical ratings will mate with each other.

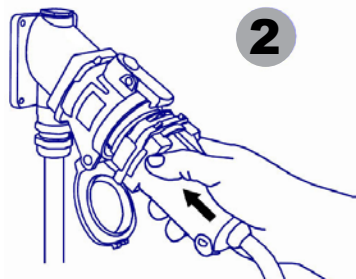
Connection

To connect a plug and receptacle, first depress the pawl to open the lid on the receptacle, then orient the plug as shown in figure 1 so that the red dot on the outside of the casing lines up with the red dot just to the left of the latch on the receptacle casing. Push the plug partially into the receptacle until it hits a stop, then rotate the plug in the clockwise direction until it hits another stop after about 30° of rotation.

At this point, the circuit is still open. Push the plug straight into the receptacle as shown in figure 2 until it becomes securely latched in place. The electrical connection is now made. On in-line connectors, squeeze the drawplates on both sides of the device together until the plug latches in place.



1



2

On the DR150, DR250 & DR400 devices, an integral mechanism provides easy connection of the plug to the receptacle. With the DR150, DR250 & DR400 plug partially inserted and rotated 30° so that it is positioned for connection, place the wire clamps around the boltheads as shown in figure 3.



3

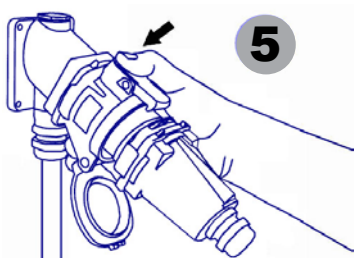


4

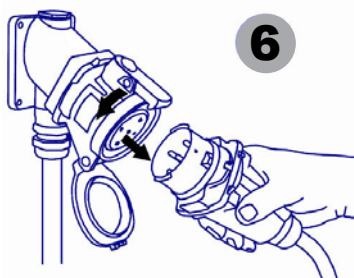
To pull the plug into the receptacle, simply push the handles back along the side of the receptacle and then push the plug into the receptacle until the plug is latched in place, as shown in figure 4. After connection, the mechanism must be released to allow disconnection of the device.

Disconnection

To break the connection, simply depress the pawl as shown in figure 5. This will break the circuit and eject the plug straight out to the rest, or off, position. The plug contacts are de-energized at this point. To remove the plug, rotate it counter-clockwise (about 30°) until it releases from the receptacle as shown in figure 6. Close and latch the lid on the receptacle.



5



6

Achieving Environmental Ratings and Watertightness



For devices rated Type 4, 4X or 3R, use only with mating devices having identical markings to maintain enclosure rating of the mated pair.

Rated ingress protection applies to the device when the plug and receptacle are mated and latched together. It also applies to the receptacle when the lid is latched closed.

Lockout Provisions

Some Meltric plugs are provided with lockout provisions. To lockout the plug, insert a locking device through the hole provided in the casing. This will prevent the plug from being inserted into a receptacle.

Some receptacles may be purchased with optional lockout provisions and used with 5/16-inch shank locks. To lockout the receptacle, close and latch the lid and then attach the locking device through the hole provided in the pawl. This will prevent the lid from being opened for the insertion of a plug.

NOTICE: Attaching the receptacle locking device with the receptacle lid open will not prevent the insertion of a plug. Lockout of the receptacle is only accomplished when the lid is locked closed.

MAINTENANCE



WARNING Before inspecting, repairing, or maintaining Meltric products, disconnect electrical power to the receptacle to eliminate the risk of electrical shock.

Meltric products require little on-going maintenance. However, it is a good practice to periodically perform the following general inspections:

- Check the mounting screws for tightness.
- Verify that the weight of the cable is supported by the strain relief mechanism and not by the terminal connections.
- Check the IP gaskets for wear and resiliency. Replace as required.
- Verify the electrical continuity of the ground circuit.
- Check the contact surfaces for cleanliness and pitting.

Deposits of dust or similar foreign materials can be rubbed off the contacts with a clean cloth. Sprays should not be used, as they tend to collect dirt. If any significant pitting of the contacts or other serious damage is observed, the device should be replaced.

Receptacle contacts may be inspected by a qualified electrician. This should only be done with the power off. It is accomplished by depressing the numbered ring around the circumference of the interior on two opposite points. This will allow the shutter to be manually turned clockwise as required to permit access to the contacts. Once the inspection is complete, the shutter **must** be rotated counter-clockwise until it is locked in the closed position.

MANUFACTURER'S RESPONSIBILITY

Meltric's responsibility is strictly limited to the repair or replacement of any product that does not conform to the warranty specified in the purchase contract. Meltric shall not be liable for any penalties or consequential damages associated with the loss of production, work, profit or any financial loss incurred by the customer.

Meltric Corporation shall not be held liable when its products are used in conjunction with products not bearing the **Marechal**™ technology trademark. The use of Meltric products in conjunction with mating devices that are not marked with the **Marechal**™ technology trademark shall void all warranties on the product.

Meltric Corporation is an ISO 9001 certified company. Its products are designed, manufactured and rated in accordance with applicable UL, CSA and IEC standards. Meltric is a also member of BECMA, the international Butt-contact Electrical Connectors Manufacturers' Association. Like all members, Meltric additionally designs and manufactures its products in accordance with BECMA standards established to ensure intermatibility with similarly rated products manufactured by other members.



www.becma.ch

INSDR/DR7/DS7 G