

### BEFORE YOU BEGIN

#### HOW TO USE THESE INSTRUCTIONS

Please read these instructions carefully to familiarize yourself with the required tools, materials, and installation sequences. Follow the sections that pertain to your particular installation. This will aid you in avoiding the unnecessary expense associated with improper installation. In addition to proper installation, read all operating and safety instructions.

All information in this manual is based on the latest product information available at the time of publication. Kohler Co. reserves the right to make changes in product characteristics, packaging, or availability at any time without notice.

#### INSTALLER HAZARD NOTIFICATION



**WARNING: Risk of injury or product damage.**

These products are not designed or intended for use as a grab bar or support bar. Do not install products in any critical support area.



**WARNING: Risk of injury or product damage.**

Use extreme care while working with vitreous china products. Vitreous china can break or chip if you overtighten screws or roughly handle the product.

#### ORDERING INFORMATION

Pillow Talk Lavatory Shelf ..... K-7957-AA  
Portrait Lavatory Shelf ..... K-2229-AA

#### TOOLS REQUIRED

- Tape measure
- 1/8" drill bit
- 1/2" drill bit
- Electric drill
- Pencil
- Spirit level
- Screwdriver
- 5/16" open end wrench

#### MATERIALS REQUIRED

- Latex-silicone caulk (not supplied)

#### ROUGHING-IN DIMENSIONS

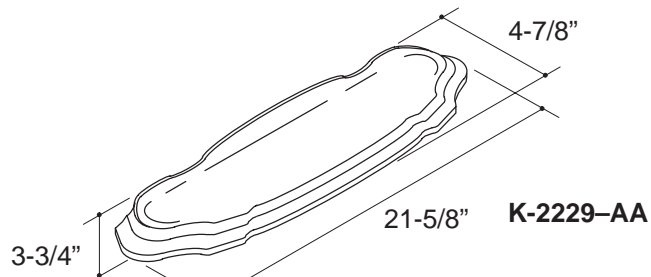
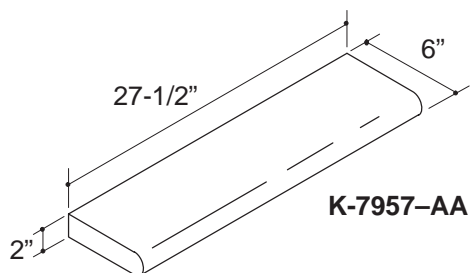
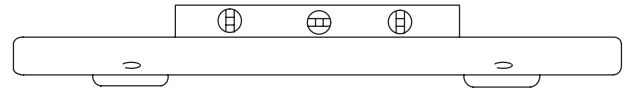


Fig. #1

# INSTALLATION

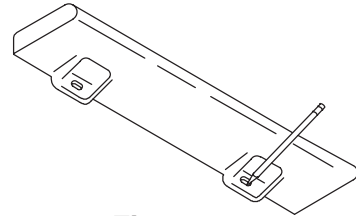
## MARK DESIRED LOCATION

Position shelf on wall at desired location. Place spirit level on top surface and level the shelf. **See Fig. #2 .**



**Fig. #2**

With shelf in place, mark the location of the mounting holes with a pencil. Remove shelf from wall. **See Fig. #3 .**



**Fig. #3**

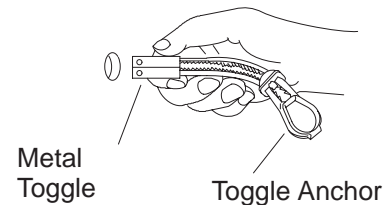
## DRILL PILOT HOLES

Drill 1/8" pilot hole at each marked location. If wall stud is drilled, use screw and washer in place of toggle anchor for mounting. If wall stud is not drilled, a 1/2" hole for installation of toggle anchor is needed.

## INSTALL TOGGLE ANCHOR

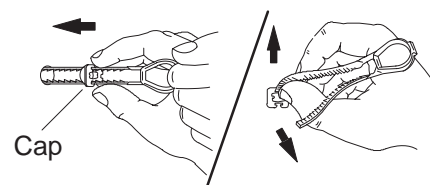
Fold back metal toggle flat alongside the plastic straps.

Insert metal toggle anchor into the hole. **See Fig. #4 .**



**Fig. #4**

Pull ring and push cap to wall and snap off straps. **See Fig. #5 .**

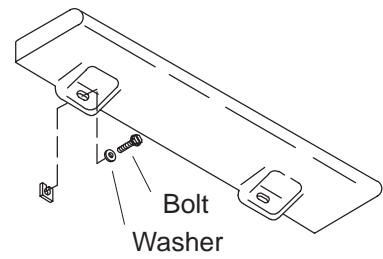


**Fig. #5**

## INSTALL SHELF

Place shelf over toggle anchors in desired location. Insert bolts and washers and tighten until snug against shelf. Discard screws. **See Fig. #6** .

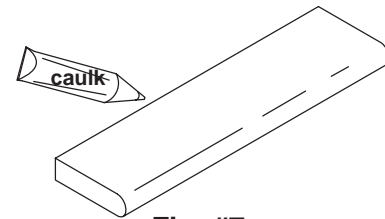
If toggle anchors are not used, place shelf over 1/8" pilot holes in desired location. Insert screws and washers and tighten until snug against shelf. Discard bolts.



**Fig. #6**

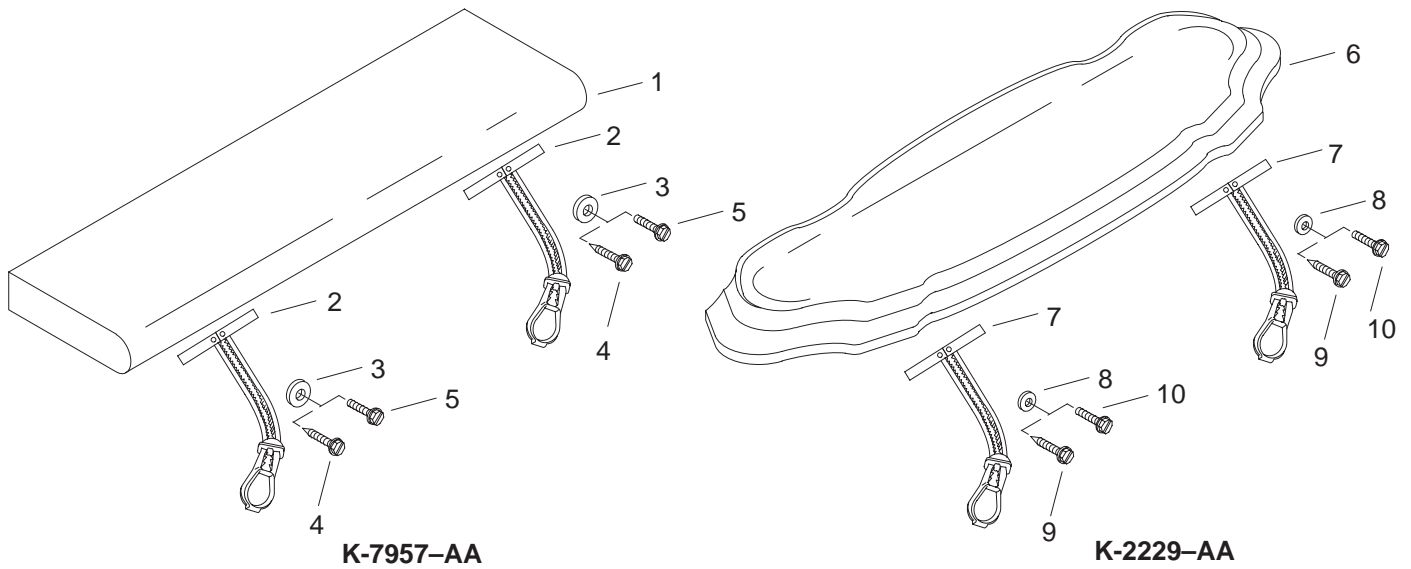
## SEAL SHELF TO WALL

Seal border between shelf and wall with latex-silicone caulk. **See Fig. #7** . Allow sufficient caulk drying time before using shelf.



**Fig. #7**

# SERVICE PARTS



## SERVICE PARTS

ITEM	PART NO.	DESCRIPTION
1	82558	Pillow Talk Lavatory Shelf
2	54601	Toggle Anchor
3	81541	Flat Washer
4	81542	#10-10 Slotted Hex Head Screw
5	46027	.25-20 Slotted Hex Head Bolt
6	83231	Portrait Lavatory Shelf
7	81457	Toggle Anchor
8	81460	Flat Washer
9	81458	#10-24 Slotted Hex Head Screw
10	81459	#10-24 Slotted Hex Head Bolt

## SERVICE KITS

PART NO.	ITEM	QTY.	DESCRIPTION
54650			Mounting Hardware Pack
	2	2 ea.	Toggle Anchor
	3	2 ea.	Flat Washer
	4	2 ea.	#14-10 Slotted Hex Head Screw
	5	2 ea.	.25-20 Slotted Hex Head Bolt
81456			Mounting Hardware Pack
	7	2 ea.	Toggle Anchor
	8	2 ea.	Flat Washer
	9	2 ea.	#10-24 Slotted Hex Head Screw
	10	2 ea.	#10-24 Slotted Hex Head Bolt

Fig. #8