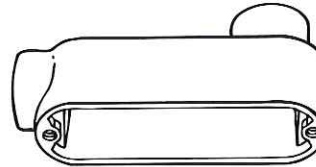


**Aluminum Conduit Bodies Applications**

- For use on threaded rigid/IMC conduit
- Use conduit bodies for making turns in conduit systems, connecting conduit sections, as pull outlets, and to provide openings for maintenance and making taps and splices to conductors



**Aluminum Conduit Bodies Product Features**

- Flat back design for easy mounting close to walls
- Cast of high strength, corrosion and weather resistant aluminum alloy with painted finish
- May be used on aluminum or steel conduit
- Lightweight, makes installation simple

**Compliances**

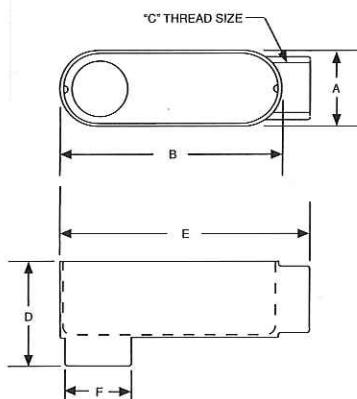
- – Standard 514B
- – C22.2 #18

**TYPE LB**

**ORDERING INFORMATION - DIMENSIONS**

TYPE LB				
CATALOG NUMBER	TRADE SIZE	UNIT CTN. QTY.	SHIP CTN. QTY.	UPC BAR CODE
EALB-1	1/2"	10	100	—
EALB-2	3/4"	10	50	—
EALB-3	1"	6	24	—
EALB-4	1-1/4"	2	8	—
EALB-5	1-1/2"	2	8	—
EALB-6	2"	1	5	—
EALB-7	2-1/2"	—	1	—
EALB-8	3"	—	1	—
EALB-9	3-1/2"	—	1	—
EALB-10	4"	—	1	—

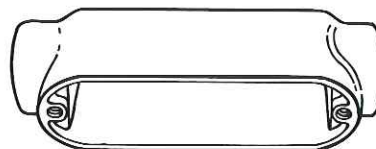
**TYPE LB**



DIMENSIONS						
CONDUIT SIZE	A	B	C	D	E	F
1/2"	1-5/16"	3-7/8"	1/2"	2-1/8"	4-3/8"	1-1/16"
3/4"	1-1/2"	4-5/8"	3/4"	2-7/16"	5-1/8"	1-11/32"
1"	1-3/4"	5-3/8"	1"	2-13/16"	5-15/16"	1-21/32"
1-1/4"	2-1/2"	6-5/8"	1-1/4"	3-3/4"	6-7/8"	2-1/4"
1-1/2"	2-1/2"	6-5/8"	1-1/4"	3-3/4"	6-7/8"	2-1/4"
2"	3-1/8"	8-1/2"	2"	4-1/8"	9-7/32"	2-15/16"
2-1/2"	4-9/16"	12-1/4"	2-1/2"	5-13/16"	13-1/8"	3-7/16"
3"	4-9/16"	12-1/4"	3"	5-13/16"	13-1/8"	4-7/64"
3-1/2"	5-7/16"	14-7/8"	3-1/2"	7-1/4"	15-3/8"	5-9/64"
4"	5-7/16"	14-7/8"	4"	7-1/4"	15-3/8"	5-9/64"



**Aluminum Conduit Bodies**  
**Applications**

- For use on threaded rigid/IMC conduit
- Use Type C conduit bodies for connecting conduit sections as pull outlets, and to provide openings for maintenance and making taps and splices to conductors


**Aluminum Conduit Bodies**  
**Product Features**

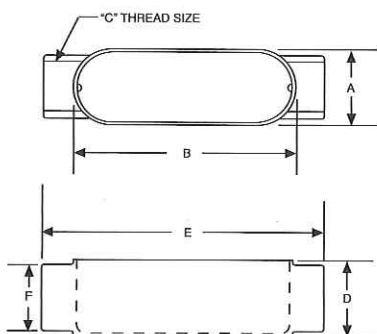
- Flat back design for easy mounting close to walls
- Cast of high strength, corrosion and weather resistant aluminum alloy with painted finish
- May be used on aluminum or steel conduit
- Lightweight, makes installation simple

**Compliances**

-  - Standard 514B
-  - C22.2 #18

**TYPE C**
**ORDERING INFORMATION - DIMENSIONS**

TYPE C				
CATALOG NUMBER	TRADE SIZE	UNIT CTN. QTY.	SHIP CTN. QTY.	UPC BAR CODE
EAC-1	1/2"	10	100	—
EAC-2	3/4"	10	50	—
EAC-3	1"	6	24	—
EAC-4	1-1/4"	2	8	—
EAC-5	1-1/2"	2	8	—
EAC-6	2"	1	5	—
EAC-7	2-1/2"	—	1	—
EAC-8	3"	—	1	—
EAC-9	3-1/2"	—	1	—
EAC-10	4"	—	1	—

**TYPE C**


DIMENSIONS						
CONDUIT SIZE	A	B	C	D	E	F
1/2"	1-5/16"	3-7/8"	1/2"	1-7/16"	4-29/32"	1-1/16"
3/4"	1-1/2"	4-5/8"	3/4"	1-11/16"	5-1/2"	1-11/32"
1"	1-3/4"	5-3/8"	1"	1-15/16"	6-7/16"	1-21/32"
1-1/4"	2-1/2"	6-5/8"	1-1/4"	2-7/8"	8-7/16"	2-1/4"
1-1/2"	2-1/2"	6-5/8"	1-1/2"	2-7/8"	8-7/16"	2-1/4"
2"	3-1/8"	8-1/2"	2"	3-7/16"	10-3/4"	2-15/16"
2-1/2"	4-9/16"	12-1/4"	2-1/2"	4"	14"	3-7/16"
3"	4-9/16"	12-1/4"	3"	4-3/4"	13-1/2"	4-7/64"
3-1/2"	5-7/16"	14-7/8"	3-1/2"	5-1/2"	15-29/32"	5-9/64"
4"	5-7/16"	14-7/8"	4"	5-1/2"	15-29/32"	5-9/64"

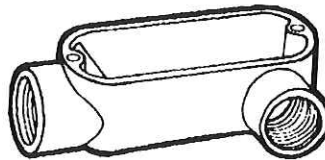
## "E" SERIES CONDUIT BODIES ALUMINUM - THREADED



D41

### Aluminum Conduit Bodies Applications

- For use on threaded rigid/IMC conduit
- Use conduit bodies for making turns in conduit systems, connecting conduit sections, as pull outlets, and to provide openings for maintenance and making taps and splices to conductors



### Aluminum Conduit Bodies Product Features

- Flat back design for easy mounting close to walls
- Cast of high strength, corrosion and weather resistant aluminum alloy with painted finish
- May be used on aluminum or steel conduit
- Lightweight, makes installation simple

### Compliances

- - Standard 514B
- - C22.2 #18

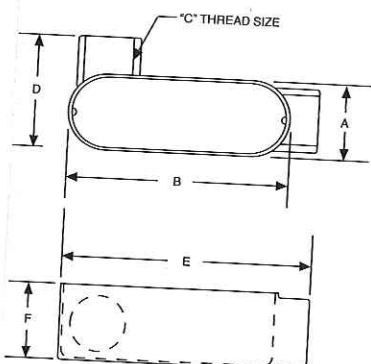
TYPE LL

### ORDERING INFORMATION - DIMENSIONS

TYPE LL				
CATALOG NUMBER	TRADE SIZE	UNIT CTN. QTY.	SHIP CTN. QTY.	UPC BAR CODE
EALL-1	1/2"	10	100	—
EALL-2	3/4"	10	50	—
EALL-3	1"	6	24	—
EALL-4	1-1/4"	2	8	—
EALL-5	1-1/2"	2	8	—
EALL-6	2"	1	5	—
EALL-7	2-1/2"	—	1	—
EALL-8	3"	—	1	—
EALL-9	3-1/2"	—	1	—
EALL-10	4"	—	1	—

DIMENSIONS						
CONDUIT SIZE	A	B	C	D	E	F
1/2"	1-5/16"	3-7/8"	1/2"	2-3/64"	4-3/8"	1-7/16"
3/4"	1-1/2"	4-5/8"	3/4"	2-5/16"	5-1/8"	1-11/16"
1"	1-3/4"	5-3/8"	1"	2-21/32"	5-15/16"	1-15/16"
1-1/4"	2-1/2"	6-5/8"	1-1/4"	3-15/32"	6-7/8"	2-7/8"
1-1/2"	2-1/2"	6-5/8"	1-1/2"	3-15/32"	6-7/8"	2-7/8"
2"	3-1/8"	8-1/2"	2"	3-7/8"	9-7/32"	3-7/16"
2-1/2"	4-9/16"	12-1/4"	2-1/2"	6"	13-1/8"	4"
3"	4-9/16"	12-1/4"	3"	6"	13-1/8"	4-3/4"
3-1/2"	5-7/16"	14-7/8"	3-1/2"	6-1/4"	15-3/8"	5-1/2"
4"	5-7/16"	14-7/8"	4"	6-1/4"	15-3/8"	5-1/2"

TYPE LL



WEATHERPROOF BOXES,  
COVERS AND LIGHTING





**Aluminum Conduit Bodies Applications**

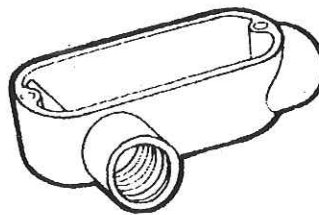
- For use on threaded rigid/IMC conduit
- Use conduit bodies for making turns in conduit systems, connecting conduit sections, as pull outlets, and to provide openings for maintenance and making taps and splices to conductors

**Aluminum Conduit Bodies Product Features**

- Flat back design for easy mounting close to walls
- Cast of high strength, corrosion and weather resistant aluminum alloy with painted finish
- May be used on aluminum or steel conduit
- Lightweight, makes installation simple

**Compliances**

-  - Standard 514B
-  - C22.2 #18

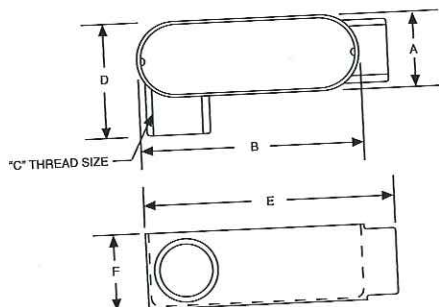


TYPE LR

**ORDERING INFORMATION - DIMENSIONS**

TYPE LR				
CATALOG NUMBER	TRADE SIZE	UNIT CTN. QTY.	SHIP CTN. QTY.	UPC BAR CODE
EALR-1	1/2"	10	100	—
EALR-2	3/4"	10	50	—
EALR-3	1"	6	24	—
EALR-4	1-1/4"	2	8	—
EALR-5	1-1/2"	2	8	—
EALR-6	2"	1	5	—
EALR-7	2-1/2"	—	1	—
EALR-8	3"	—	1	—
EALR-9	3-1/2"	—	1	—
EALR-10	4"	—	1	—

TYPE LR


**DIMENSIONS**

CONDUIT SIZE	A	B	C	D	E	F
1/2"	1-5/16"	3-7/8"	1/2"	2-3/64"	4-3/8"	1-7/16"
3/4"	1-1/2"	4-5/8"	3/4"	2-5/16"	5-1/8"	1-11/16"
1"	1-3/4"	5-3/8"	1"	2-21/32"	5-15/16"	1-15/16"
1-1/4"	2-1/2"	6-5/8"	1-1/4"	3-15/32"	6-7/8"	2-7/8"
1-1/2"	2-1/2"	6-5/8"	1-1/2"	3-15/32"	6-7/8"	2-7/8"
2"	3-1/8"	8-1/2"	2"	3-7/8"	9-7/32"	3-7/16"
2-1/2"	4-9/16"	12-1/4"	2-1/2"	6"	13-1/8"	4"
3"	4-9/16"	12-1/4"	3"	6"	13-1/8"	4-3/4"
3-1/2"	5-7/16"	14-7/8"	3-1/2"	6-1/4"	15-3/8"	5-1/2"
4"	5-7/16"	14-7/8"	4"	6-1/4"	15-3/8"	5-1/2"

**Aluminum Conduit Bodies Applications**

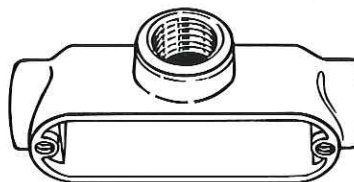
- For use on threaded rigid/IMC conduit
- Use conduit bodies for making turns in conduit systems, connecting conduit sections, as pull outlets, and to provide openings for maintenance and making taps and splices to conductors

**Aluminum Conduit Bodies Product Features**

- Flat back design for easy mounting close to walls
- Cast of high strength, corrosion and weather resistant aluminum alloy with painted finish
- May be used on aluminum or steel conduit
- Lightweight, make installation simple

**Compliances**

-  - Standard 514B
-  - C22.2 #18

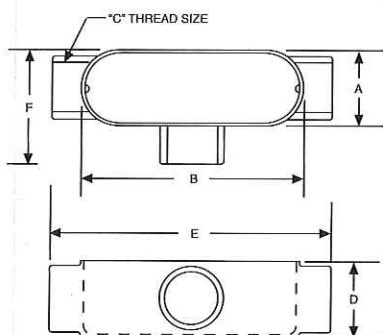


**TYPE T**

**ORDERING INFORMATION - DIMENSIONS**

TYPE T				
CATALOG NUMBER	TRADE SIZE	UNITY CTN. QTY.	SHIP CTN. QTY.	UPC BAR CODE
EAT-1	1/2"	10	100	—
EAT-2	3/4"	10	50	—
EAT-3	1"	6	24	—
EAT-4	1-1/4"	2	8	—
EAT-5	1-1/2"	2	8	—
EAT-6	2"	1	5	—
EAT-7	2-1/2"	—	1	—
EAT-8	3"	—	1	—
EAT-9	3-1/2"	—	1	—
EAT-10	4"	—	1	—

**TYPE T**



DIMENSIONS						
CONDUIT SIZE	A	B	C	D	E	F
1/2"	1-5/16"	3-7/8"	1/2"	1-7/16"	4-29/32"	2-1/8"
3/4"	1-1/2"	4-5/8"	3/4"	1-11/16"	5-1/2"	2-11/32"
1"	1-3/4"	5-3/8"	1"	1-15/16"	6-7/16"	2-21/32"
1-1/4"	2-1/2"	6-5/8"	1-1/4"	2-7/8"	8-7/16"	3-19/32"
1-1/2"	2-1/2"	6-5/8"	1-1/2"	2-7/8"	8-7/16"	3-19/32"
2"	3-1/8"	8-1/2"	2"	3-7/16"	10-3/4"	4-1/32"
2-1/2"	4-9/16"	12-1/4"	2-1/2"	4"	14"	6-1/4"
3"	4-9/16"	12-1/4"	3"	4-3/4"	13-1/2"	6-1/4"
3-1/2"	5-7/16"	14-7/8"	3-1/2"	5-1/2"	15-29/32"	7"
4"	5-7/16"	14-7/8"	4"	5-1/2"	15-29/32"	7"



### Aluminum Conduit Bodies Applications

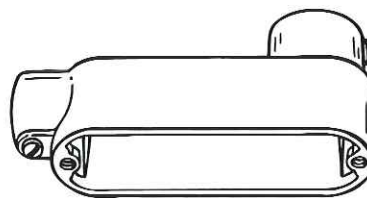
- For use with EMT conduit in dry locations
- Use conduit bodies for making turns in conduit systems, connecting conduit sections, as pull outlets, and to provide openings for maintenance and making taps and splices to conductors

### Aluminum Conduit Bodies Product Features

- Flat back design for easy mounting close to walls
- Cast of high strength, corrosion and weather resistant aluminum alloy with painted finish
- May be used on aluminum or steel conduit
- Lightweight, makes installation simple

### Compliances

-  - Standard 514B
-  - C22.2 #18

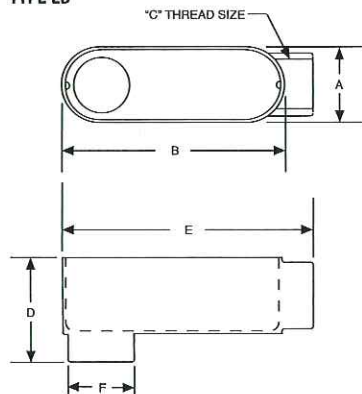


TYPE LB

### ORDERING INFORMATION - DIMENSIONS

TYPE LB				
CATALOG NUMBER	TRADE SIZE	UNITY CTN. QTY.	SHIP CTN. QTY.	UPC BAR CODE
EBLB-1	1/2"	10	100	—
EBLB-2	3/4"	10	50	—
EBLB-3	1"	6	24	—
EBLB-4	1-1/4"	2	8	—
EBLB-5	1-1/2"	2	8	—
EBLB-6	2"	1	5	—
EBLB-7	2-1/2"	—	1	—
EBLB-8	3"	—	1	—
EBLB-9	3-1/2"	—	1	—
EBLB-10	4"	—	1	—

TYPE LB



DIMENSIONS						
CONDUIT SIZE	A	B	C	D	E	F
1/2"	1-5/16"	3-7/8"	1/2"	2-1/8"	4-3/8"	1-1/16"
3/4"	1-1/2"	4-5/8"	3/4"	2-7/16"	5-1/8"	1-11/32"
1"	1-3/4"	5-3/8"	1"	2-13/16"	5-15/16"	1-21/32"
1-1/4"	2-1/2"	6-5/8"	1-1/4"	3-3/4"	6-7/8"	2-1/4"
1-1/2"	2-1/2"	6-5/8"	1-1/2"	3-3/4"	6-7/8"	2-1/4"
2"	3-1/8"	8-1/2"	2"	4-1/8"	9-7/32"	2-15/16"
2-1/2"	4-9/16"	12-1/4"	2-1/2"	5-13/16"	13-1/8"	3-7/16"
3"	4-9/16"	12-1/4"	3"	5-13/16"	13-1/8"	4-7/64"
3-1/2"	5-7/16"	14-7/8"	3-1/2"	7-1/4"	15-3/8"	5-9/64"
4"	5-7/16"	14-7/8"	4"	7-1/4"	15-3/8"	5-9/64"



# "E" SERIES CONDUIT BODIES

## ALUMINUM - SET SCREW TYPE FOR EMT



D45

### Aluminum Conduit Bodies Applications

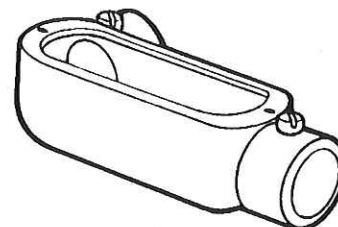
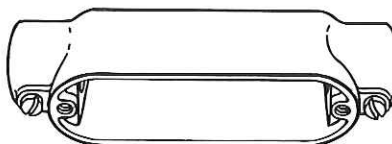
- For use with EMT conduit in dry locations
- Use conduit bodies for making turns in conduit systems, connecting conduit sections, as pull outlets, and to provide openings for maintenance and making taps and splices to conductors

### Aluminum Conduit Bodies Product Features

- Flat back design for easy mounting close to walls
- Cast of high strength, corrosion and weather resistant aluminum alloy with painted finish
- May be used on aluminum or steel conduit
- Lightweight, makes installation simple

### Compliances

- - Standard 514B
- - C22.2 #18



TYPE C

TYPE LL

### ORDERING INFORMATION - DIMENSIONS

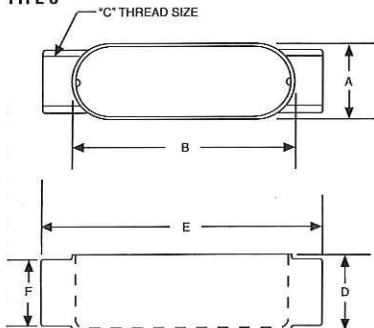
TYPE C				
CATALOG NUMBER	TRADE SIZE	UNITY CTN. QTY.	SHIP CTN. QTY.	UPC BAR CODE
EBC-1	1/2"	10	100	—
EBC-2	3/4"	10	50	—
EBC-3	1"	6	24	—
EBC-4	1-1/4"	2	8	—
EBC-5	1-1/2"	2	8	—
EBC-6	2"	1	5	—

DIMENSIONS - TYPE C						
CONDUIT SIZE	A	B	C	D	E	F
1/2"	1-5/16"	3-7/8"	1/2"	1-7/16"	4-29/32"	1-1/16"
3/4"	1-1/2"	4-5/8"	3/4"	1-11/16"	5-1/2"	1-11/32"
1"	1-3/4"	5-3/8"	1"	1-15/16"	6-7/16"	1-21/32"
1-1/4"	2-1/2"	6-5/8"	1-1/4"	2-7/8"	8-7/16"	2-1/4"
1-1/2"	2-1/2"	6-5/8"	1-1/2"	2-7/8"	8-7/16"	2-1/4"
2"	3-1/8"	8-1/2"	2"	3-7/16"	10-3/4"	2-15/16"

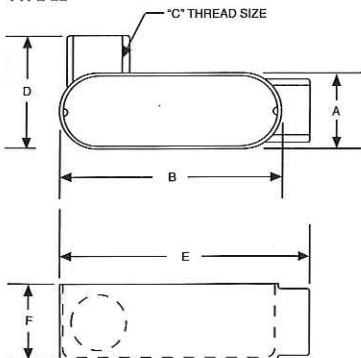
TYPE LL				
CATALOG NUMBER	TRADE SIZE	UNITY CTN. QTY.	SHIP CTN. QTY.	UPC BAR CODE
EBLL-1	1/2"	10	100	—
EBLL-2	3/4"	10	50	—
EBLL-3	1"	6	24	—
EBLL-4	1-1/4"	2	8	—
EBLL-5	1-1/2"	2	8	—
EBLL-6	2"	1	5	—

DIMENSIONS - TYPE LL						
CONDUIT SIZE	A	B	C	D	E	F
1/2"	1-5/16"	3-7/8"	1/2"	2-3/64"	4-3/8"	1-7/16"
3/4"	1-1/2"	4-5/8"	3/4"	2-15/16"	5-1/8"	1-11/16"
1"	1-3/4"	5-3/8"	1"	2-21/32"	5-15/16"	1-15/16"
1-1/4"	2-1/2"	6-5/8"	1-1/4"	3-15/32"	6-7/8"	2-7/8"
1-1/2"	2-1/2"	6-5/8"	1-1/2"	3-15/32"	6-7/8"	2-7/8"
2"	3-1/8"	8-1/2"	2"	3-7/8"	9-7/32"	3-7/16"

TYPE C



TYPE LL



WEATHERPROOF BOXES,  
COVERS AND LIGHTING



### Aluminum Conduit Bodies Applications

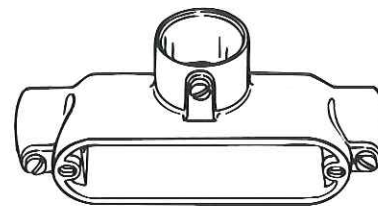
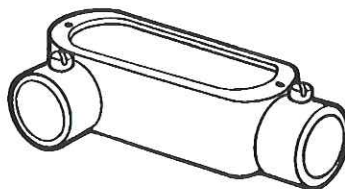
- For use with EMT conduit in dry locations
- Use conduit bodies for making turns in conduit systems, connecting conduit sections, as pull outlets, and to provide openings for maintenance and making taps and splices to conductors

### Aluminum Conduit Bodies Product Features

- Flat back design for easy mounting close to walls
- Cast of high strength, corrosion and weather resistant aluminum alloy with painted finish
- May be used on aluminum or steel conduit
- Lightweight, makes installation simple

### Compliances

- - Standard 514B
- - C22.2 #18



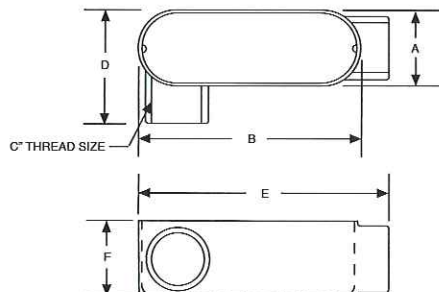
TYPE LR

TYPE T

### ORDERING INFORMATION - DIMENSIONS

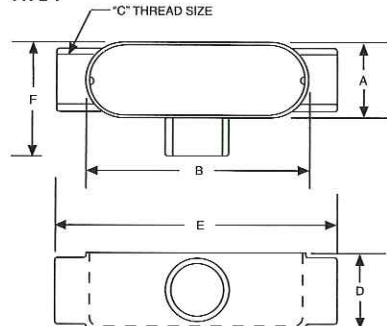
TYPE LR				
CATALOG NUMBER	TRADE SIZE	UNITY CTN. QTY.	SHIP CTN. QTY.	UPC BAR CODE
EBLR-1	1/2"	10	100	—
EBLR-2	3/4"	10	50	—
EBLR-3	1"	6	24	—
EBLR-4	1-1/4"	2	8	—
EBLR-5	1-1/2"	2	8	—
EBLR-6	2"	1	5	—

TYPE LR



DIMENSIONS - TYPE LR						
CONDUIT SIZE	A	B	C	D	E	F
1/2"	1-5/16"	3-7/8"	1/2"	2-3/64"	4-3/8"	1-7/16"
3/4"	1-1/2"	4-5/8"	3/4"	2-15/16"	5-1/8"	1-11/16"
1"	1-3/4"	5-3/8"	1"	2-21/32"	5-15/16"	1-15/16"
1-1/4"	2-1/2"	6-5/8"	1-1/4"	3-15/32"	6-7/8"	2-7/8"
1-1/2"	2-1/2"	6-5/8"	1-1/2"	3-15/32"	6-7/8"	2-7/8"
2"	3-1/8"	8-1/2"	2"	3-7/8"	9-7/32"	3-7/16"

TYPE T



TYPE T				
CATALOG NUMBER	TRADE SIZE	UNITY CTN. QTY.	SHIP CTN. QTY.	UPC BAR CODE
EBT-1	1/2"	10	100	—
EBT-2	3/4"	10	50	—
EBT-3	1"	6	24	—
EBT-4	1-1/4"	2	8	—
EBT-5	1-1/2"	2	8	—
EBT-6	2"	1	5	—

DIMENSIONS - TYPE T						
CONDUIT SIZE	A	B	C	D	E	F
1/2"	1-5/16"	3-7/8"	1/2"	1-7/16"	4-29/32"	2-1/8"
3/4"	1-1/2"	4-5/8"	3/4"	1-11/16"	5-1/2"	2-11/32"
1"	1-3/4"	5-3/8"	1"	1-15/16"	6-7/16"	2-21/32"
1-1/4"	2-1/2"	6-5/8"	1-1/4"	2-7/8"	8-7/16"	3-19/32"
1-1/2"	2-1/2"	6-5/8"	1-1/2"	2-7/8"	8-7/16"	3-19/32"
2"	3-1/8"	8-1/2"	2"	3-7/16"	10-3/4"	4-1/32"




**Conduit Entrance Ells**  
**Application**

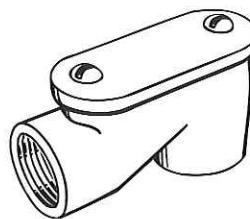
- For use with conduit to act as an elbow between service entrance and vertical entrance cap conduit runs

**Conduit Entrance Ells**  
**Product Features**

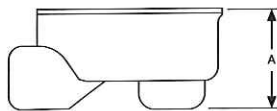
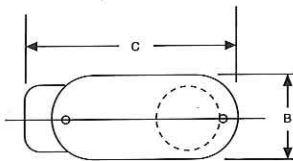
- Lightweight aluminum construction eases installation and provides a corrosion resistance
- Removable cover and gasket allows for easier wire pulling and access to the raceway

**Compliances**

- - Standard 514B
- - C22.2 #18


**EASLB SERIES**
**ORDERING INFORMATION - DIMENSIONS**

ENTRANCE ELLS ALUMINUM				
CATALOG NUMBER	TRADE SIZE	UNITY CTN. QTY.	SHIP CTN. QTY.	UPC BAR CODE
EASLB-1	1/2"	10	50	—
EASLB-2	3/4"	10	50	—
EASLB-3	1"	6	24	—
EASLB-4	1-1/4"	2	8	—
EASLB-5	1-1/2"	2	8	—
EASLB-6	2"	1	5	—

**SERVICE ENTRANCE**


DIMENSIONS				
CATALOG NUMBER	TRADE SIZE	A	B	C
EASLB-1	1/2"	1-5/8"	1-13/32"	3-9/32"
EASLB-2	3/4"	1-16/64"	1-45/64"	3-13/16"
EASLB-3	1"	2-1/8"	1-9/16"	4-5/16"
EASLB-4	1-1/4"	2-9/16"	2-7/16"	5-9/16"
EASLB-5	1-1/2"	2-19/32"	2-5/8"	6-1/4"
EASLB-6	2"	3-1/8"	3-5/64"	6-3/4"

# **"E" SERIES CONDUIT BODIES** **ALUMINUM - COVERS AND GASKETS**



**D47**

## **Conduit Body Covers Application**

- For use with aluminum conduit bodies

## **Conduit Body Covers** **Product Features**

- Lightweight aluminum construction provides corrosion resistance and easy installation
- Covers are furnished with zinc plated screws — no worry about removing a cover once it is installed

## **Compliances**

- — Standard 514B
- — C22.2 #18

## **Conduit Body Gaskets** **Application**

- For use with conduit bodies and covers to provide a raintight seal

## **Conduit Body Gaskets** **Product Feature**

- Two choices of gasket materials available: fiber or neoprene

## **Compliances**

- — Standard 514B
- — C22.2 #18



**ESCV SERIES**

**EGKV AND EGKN SERIES**

## **ORDERING INFORMATION - DIMENSIONS**

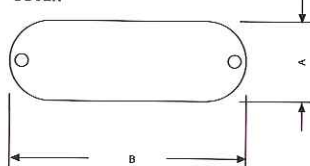
<b>COVERS - ALUMINUM</b>				
CATALOG NUMBER	TRADE SIZE	UNITY CTN. QTY.	SHIP CTN. QTY.	UPC BAR CODE
ESCV-1	1/2"	10	100	—
ESCV-2	3/4"	10	100	—
ESCV-3	1"	10	100	—
ESCV-4	1-1/4" - 1-1/2"	10	50	—
ESCV-5	2"	—	50	—
ESCV-6	2-1/2" - 3"	—	5	—
ESCV-7	3-1/2" - 4"	—	5	—

<b>GASKETS - FIBER TYPE</b>				
CATALOG NUMBER	TRADE SIZE	UNITY CTN. QTY.	SHIP CTN. QTY.	UPC BAR CODE
EGKV-1	1/2"	100	1000	—
EGKV-2	3/4"	100	1000	—
EGKV-3	1"	100	1000	—
EGKV-4	1-1/4" - 1-1/2"	50	500	—
EGKV-5	2"	50	500	—

<b>GASKETS - NEOPRENE TYPE</b>				
CATALOG NUMBER	TRADE SIZE	UNITY CTN. QTY.	SHIP CTN. QTY.	UPC BAR CODE
EGKN-1	1/2"	100	1000	—
EGKN-2	3/4"	100	1000	—
EGKN-3	1"	100	1000	—
EGKN-4	1-1/4" - 1-1/2"	50	500	—
EGKN-5	2"	50	500	—
EGKN-6	2-1/2" - 3"	—	10	—
EGKN-7	3-1/2" - 4"	—	10	—

<b>DIMENSIONS</b>			
CATALOG NUMBER	TRADE SIZE	A	B
ESCV-1	1/2"	1-3/8"	3-29/32"
ESCV-2	3/4"	1-9/16"	4-11/16"
ESCV-3	1"	1-25/32"	5-3/8"
ESCV-4	1-1/4" - 1-1/2"	2-1/2"	7-1/4"
ESCV-5	2"	3-1/8"	9-1/2"
ESCV-6	2-1/2" - 3"	4-1/2"	12-1/4"
ESCV-7	3-1/2" - 4"	5-29/64"	14-13/64"

COVER



WEATHERPROOF BOXES,  
COVERS AND LIGHTING

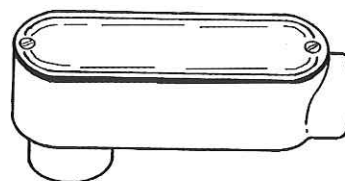
## E-PAK™ CONDUIT BODIES

### ALUMINUM - THREADED WITH COVER AND GASKET INCLUDED



#### Aluminum Conduit Bodies with Cover and Gasket Applications

- For use on threaded rigid/IMC conduit
- Use conduit outlet bodies for connecting conduit sections, for making bends in conduit runs, as pull outlets, or to provide openings for making splices and taps in conductors



#### Aluminum Conduit Bodies with Cover and Gasket Product Features

- Assembled with cover and gasket to speed installation — installer has all components needed
- Flat back design for easy mounting close to walls
- Cast of high strength, corrosion and weather resistant aluminum alloy with painted finish
- May be used on aluminum or steel conduit
- Lightweight, makes installation simple
- Unique E-PAK™ packaging serves as a shipping and display carton
- Bell® conduit bodies are UPC-A bar coded for sales and inventory control

#### Compliances

- – Standard 514B
- – C22.2 #18

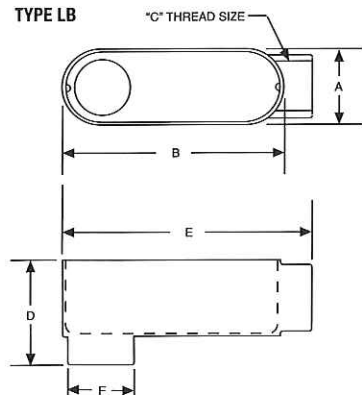
TYPE LB

### ORDERING INFORMATION - DIMENSIONS

TYPE LB				
CATALOG NUMBER	TRADE SIZE	STD. PKG.	PKG. TYPE	UPC BAR CODE
EALB-1CG	1/2"	12	E-PAK	
EALB-2CG	3/4"	15	E-PAK	
EALB-3CG	1"	5	E-PAK	
EALB-4CG	1-1/4"	5	E-PAK	
EALB-5CG	1-1/2"	5	E-PAK	
EALB-6CG	2"	2	E-PAK	

DIMENSIONS						
CONDUIT SIZE	A	B	C	D	E	F
1/2"	1-5/16"	3-7/8"	1/2"	2-1/8"	4-3/8"	1-1/16"
3/4"	1-1/2"	4-5/8"	3/4"	2-7/16"	5-1/8"	1-11/32"
1"	1-3/4"	5-3/8"	1"	2-13/16"	5-15/16"	1-21/32"
1-1/4"	2-1/2"	6-5/8"	1-1/4"	3-3/4"	6-7/8"	2-1/4"
1-1/2"	2-1/2"	6-5/8"	1-1/2"	3-3/4"	6-7/8"	2-1/4"
2"	3-1/8"	8-1/2"	2"	4-1/8"	9-7/32"	2-15/16"

TYPE LB





**E-PAK™ CONDUIT BODIES**  
**ALUMINUM - THREADED WITH COVER**  
**AND GASKET INCLUDED**



**Aluminum Conduit Bodies with Cover and Gasket Applications**

- For use on threaded rigid/IMC conduit
- Use Type C conduit outlet bodies as pull outlets, or to provide openings for making splices and taps in conductors

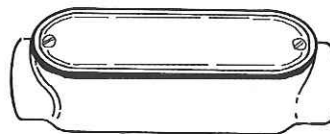


**Aluminum Conduit Bodies with Cover and Gasket Product Features**

- Assembled with cover and gasket to speed installation — installer has all components needed
- Flat back design for easy mounting close to walls
- Cast of high strength, corrosion and weather resistant aluminum alloy with painted finish
- May be used on aluminum or steel conduit
- Lightweight, makes installation simple
- Unique E-PAK™ packaging serves as a shipping and display carton
- Bell® conduit bodies are UPC-A bar coded for sales and inventory control

**Compliances**

- – Standard 514B
- – C22.2 #18



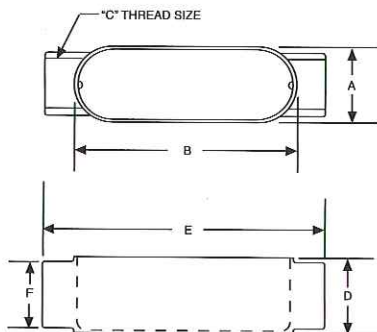
**TYPE C**

**ORDERING INFORMATION - DIMENSIONS**

TYPE C				
CATALOG NUMBER	TRADE SIZE	STD. PKG.	PKG. TYPE	UPC BAR CODE
EAC-1CG	1/2"	12	E-PAK	
EAC-2CG	3/4"	15	E-PAK	
EAC-3CG	1"	5	E-PAK	

DIMENSIONS						
CONDUIT SIZE	A	B	C	D	E	F
1/2"	1-5/16"	3-7/8"	1/2"	1-7/16"	4-29/32"	1-1/16"
3/4"	1-1/2"	4-5/8"	3/4"	1-11/16"	5-1/2"	1-11/32"
1"	1-3/4"	5-3/8"	1"	1-15/16"	6-7/16"	1-21/32"

**TYPE C**





### Aluminum Conduit Bodies with Cover and Gasket Applications

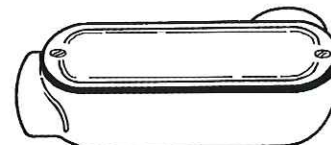
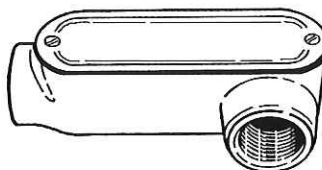
- For use on threaded rigid/IMC conduit
- Use conduit outlet bodies for connecting conduit sections, for making bends in conduit runs, as pull outlets, or to provide openings for making splices and taps in conductors

### Aluminum Conduit Bodies with Cover and Gasket Product Features

- Assembled with cover and gasket to speed installation — installer has all components needed
- Flat back design for easy mounting close to walls
- Cast of high strength, corrosion and weather resistant aluminum alloy with painted finish
- May be used on aluminum or steel conduit
- Lightweight, makes installation simple
- Unique E-PAK™ packaging serves as a shipping and display carton
- Bell® conduit bodies are UPC-A bar coded for sales and inventory control

### Compliances

-  – Standard 514B
-  – C22.2 #18



TYPE LL

TYPE LR

### ORDERING INFORMATION - DIMENSIONS

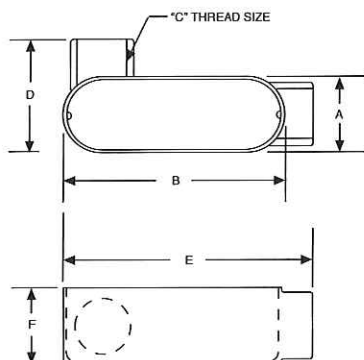
TYPE LL				
CATALOG NUMBER	TRADE SIZE	STD. PKG.	PKG. TYPE	UPC BAR CODE
EALL-1CG	1/2"	12	E-PAK	
EALL-2CG	3/4"	15	E-PAK	
EALL-3CG	1"	5	E-PAK	

DIMENSIONS - TYPE LL						
CONDUIT SIZE	A	B	C	D	E	F
1/2"	1-5/16"	3-7/8"	1/2"	2-3/64"	4-3/8"	1-7/16"
3/4"	1-1/2"	4-5/8"	3/4"	2-5/16"	5-1/8"	1-11/16"
1"	1-3/4"	5-3/8"	1"	2-21/32"	5-15/16"	1-15/16"

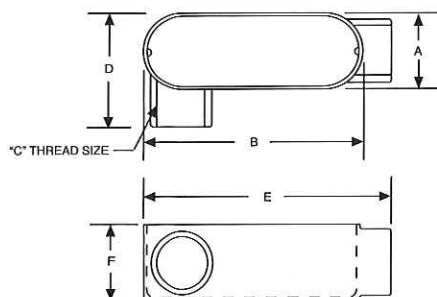
TYPE LR				
CATALOG NUMBER	TRADE SIZE	STD. PKG.	PKG. TYPE	UPC BAR CODE
EALR-1CG	1/2"	12	E-PAK	
EALR-2CG	3/4"	15	E-PAK	
EALR-3CG	1"	5	E-PAK	

DIMENSIONS - TYPE LR						
CONDUIT SIZE	A	B	C	D	E	F
1/2"	1-5/16"	3-7/8"	1/2"	2-3/64"	4-3/8"	1-7/16"
3/4"	1-1/2"	4-5/8"	3/4"	2-5/16"	5-1/8"	1-11/16"
1"	1-3/4"	5-3/8"	1"	2-21/32"	5-15/16"	1-15/16"

TYPE LL



TYPE LR



**E-PAK™ CONDUIT BODIES**  
**ALUMINUM - THREADED WITH COVER**  
**AND GASKET INCLUDED**



**Aluminum Conduit Bodies with Cover and Gasket Applications**



- For use on threaded rigid/IMC conduit
- Use conduit outlet bodies for connecting conduit sections, for making bends in conduit runs, as pull outlets, or to provide openings for making splices and taps in conductors

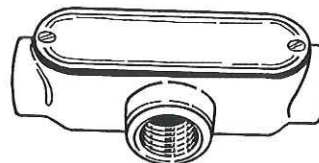
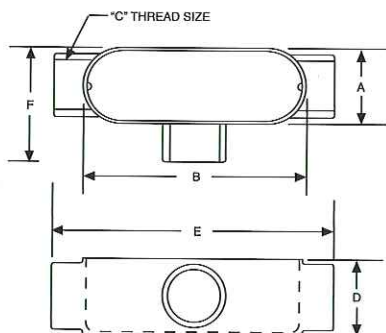
**Aluminum Conduit Bodies with Cover and Gasket**  
**Product Features**

- Assembled with cover and gasket to speed installation — installer has all components needed
- Flat back design for easy mounting close to walls
- Cast of high strength, corrosion and weather resistant aluminum alloy with painted finish
- May be used on aluminum or steel conduit
- Lightweight, makes installation simple
- Unique E-PAK™ packaging serves as a shipping and display carton
- Bell® conduit bodies are UPC-A bar coded for sales and inventory control

**Compliances**

- – Standard 514B
- – C22.2 #18

TYPE T



TYPE T

**ORDERING INFORMATION - DIMENSIONS**

TYPE T				
CATALOG NUMBER	TRADE SIZE	STD. PKG.	PKG. TYPE	UPC BAR CODE
EAT-1CG	1/2"	12	E-PAK	
EAT-2CG	3/4"	15	E-PAK	
EAT-3CG	1"	5	E-PAK	
EAT-4CG	1-1/4"	5	E-PAK	
EAT-5CG	1-1/2"	5	E-PAK	
EAT-6CG	2"	2	E-PAK	

DIMENSIONS						
CONDUIT SIZE	A	B	C	D	E	F
1/2"	1-5/16"	3-7/8"	1/2"	1-7/16"	4-29/32"	2-1/8"
3/4"	1-1/2"	4-5/8"	3/4"	1-11/16"	5-1/2"	2-11/32"
1"	1-3/4"	5-3/8"	1"	1-15/16"	6-7/16"	2-21/32"
1-1/4"	2-1/2"	6-5/8"	1-1/4"	2-7/8"	8-7/16"	3-19/32"
1-1/2"	2-1/2"	6-5/8"	1-1/2"	2-7/8"	8-7/16"	3-19/32"
2"	3-1/8"	8-1/2"	2"	3-7/16"	10-3/4"	4-1/32"



# E-PAK™ CONDUIT BODIES

## ALUMINUM - SET SCREW TYPE FOR EMT



### Applications

- For use on EMT conduit in dry locations
- Use conduit outlet bodies for conduit sections, for making bends in conduit runs, as pull outlets, or to provide openings for making splices and taps in conductors



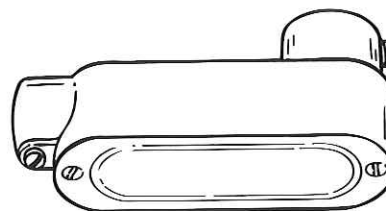
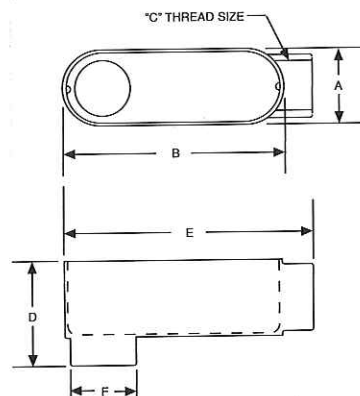
### Product Features

- Assembled with cover to speed installation — installer has all components needed
- Flat back design for easy mounting close to walls
- Cast of high strength, corrosion and weather resistant aluminum alloy with painted finish
- May be used on aluminum or steel conduit
- Lightweight, makes installation simple
- Unique E-PAK™ packaging serves as a shipping and display carton

### Compliances

- - Standard 514B
- - C22.2 #18

### TYPE LB



TYPE LB

## ORDERING INFORMATION - DIMENSIONS

TYPE LB				
CATALOG NUMBER	TRADE SIZE	STD. PKG.	PKG. TYPE	UPC BAR CODE
EBLB-1CG	1/2"	12	E-PAK	
EBLB-2CG	3/4"	15	E-PAK	
EBLB-3CG	1"	5	E-PAK	

DIMENSIONS						
CONDUIT SIZE	A	B	C	D	E	F
1/2"	1-5/16"	3-7/8"	1/2"	2-1/8"	4-3/8"	1-1/16"
3/4"	1-1/2"	4-5/8"	3/4"	2-7/16"	5-1/8"	1-11/32"
1"	1-3/4"	5-3/8"	1"	2-13/16"	5-15/16"	1-21/32"



### Application

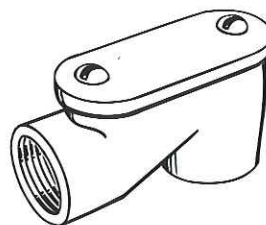
- For use with conduit to act as an elbow between service entrance and vertical entrance head conduit runs

### Product Features

- Lightweight aluminum construction eases installation and provides corrosion resistance
- Removable cover and gasket allows for easier wire pulling and access to the raceway
- Unique E-PAK™ packaging serves as a shipping and display carton

### Compliances

- - Standard 514B
- - C22.2 #18

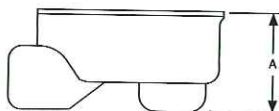
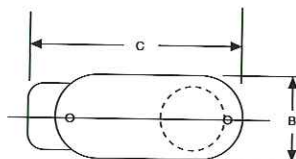


EASLB SERIES

## ORDERING INFORMATION - DIMENSIONS

ENTRANCE ELLS				
CATALOG NUMBER	TRADE SIZE	STD. PKG.	PKG. TYPE	UPC BAR CODE
EASLB-1B	1/2"	12	E-PAK	
EASLB-2B	3/4"	15	E-PAK	
EASLB-3B	1"	5	E-PAK	
EASLB-4B	1-1/4"	5	E-PAK	
EASLB-5B	1-1/2"	5	E-PAK	
EASLB-6B	2"	2	E-PAK	

### SERVICE ENTRANCE



DIMENSIONS				
CATALOG NUMBER	TRADE SIZE	A	B	C
EASLB-1B	1/2"	1-5/8"	1-13/32"	3-9/32"
EASLB-2B	3/4"	1-16/64"	1-45/64"	3-13/16"
EASLB-3B	1"	2-1/8"	1-9/16"	4-5/16"
EASLB-4B	1-1/4"	2-9/16"	2-7/16"	5-9/16"
EASLB-5B	1-1/2"	2-19/32"	2-5/8"	6-1/4"
EASLB-6B	2"	3-1/8"	3-5/64"	6-3/4"