



8', 4-LAMP STRIP FIXTURE

CATALOG NUMBER KT-DDSLEDT8-8-4L



DESCRIPTION

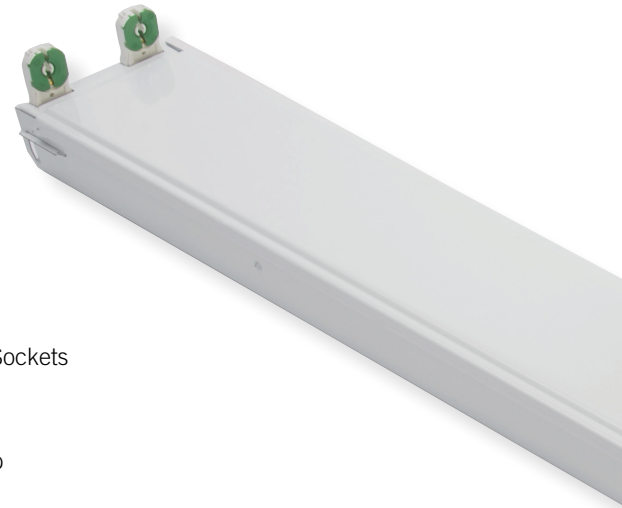
8' LED Tube Ready Strip Fixture, 4 Lamp. (Lamps Sold Separately)

APPLICATION

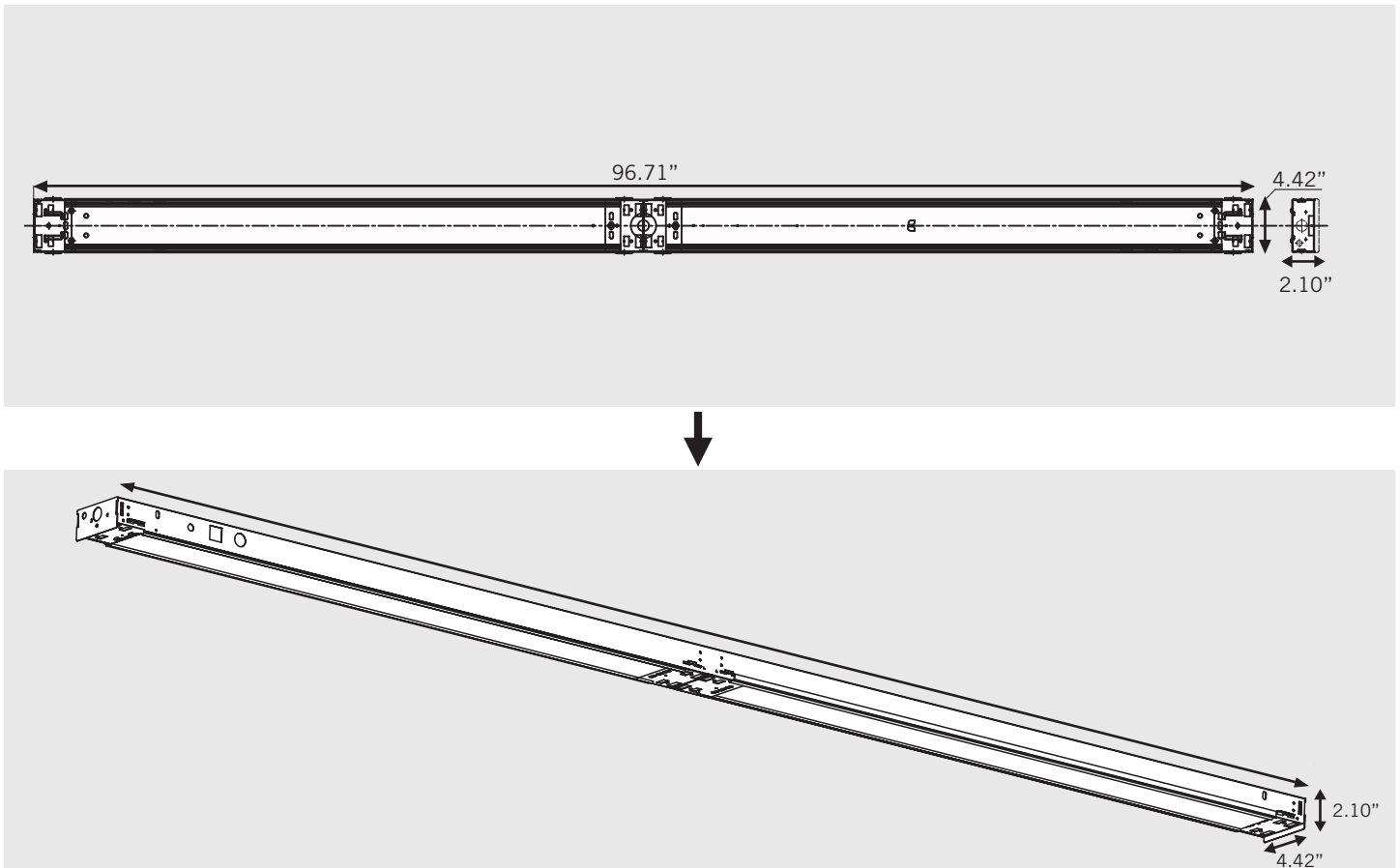
Used for indoor highbay, lowbay, warehouse and general lighting applications.

PRODUCT FEATURES

- Designed for use with Single Ended Wiring (Type B) LED T8 Tubes; Includes Pre-Wired Sockets
- Post Painted White Steel Body
- Rated for Dry and Damp Locations
- For Use with Keystone Single Ended Wiring Direct Drive LED Lamps: 22W Max per Lamp



PRODUCT DIMENSIONS



In order for safety certification to be valid, Keystone lamps must be installed in the fixture.