

BALDOR® • ***RELIANCE***

Product Information Packet

CEBM7144T

5HP,1745RPM,3PH,60HZ,184TC,XPFC,FOOT,

Part Detail							
Revision:	-	Status:	PRD/A	Change #:		Proprietary:	No
Type:	AC	Elec. Spec:	W03128A A 001	CD Diagram:	416820-1	Mfg Plant:	
Mech. Spec:		Layout:	613053-542	Poles:	04	Created Date:	04-09-2015
Base:		Eff. Date:	04-13-2015	Leads:			

Specs			
Catalog Number:	CEBM7144T	Feedback Device:	NO FEEDBACK
Enclosure:	XPFC	Frame Prefix:	L
Frame:	L184TC	Heater Indicator:	No Heater
Frame Material:	Iron	Insulation Class:	B
Output @ Frequency:	5.000 @ 60 HZ	Inverter Code:	Not Inverter
Voltage @ Frequency:	230 V @ 60 HZ	KVA Code:	J
	460 V @ 60 HZ	Lifting Lugs:	Standard Lifting Lugs
XP Class and Group:	CLI GP D; CLII GP F,G	Motor Type:	M
XP Division:	Division I	Mounting Arrangement:	F1
Agency Approvals:	UL	Product Family:	Other
	CSA	Pulley End Bearing Type:	Ball
	CCSA US	Pulley Face Code:	C-Face
Auxillary Box:	No Auxillary Box	Shaft Ground Indicator:	No Shaft Grounding
Base Indicator:	Rigid	Shaft Rotation:	Reversible
Bearing Grease Type:	Polyrex EM (-20F +300F)	Shaft Slinger Indicator:	Shaft Slinger
Current @ Voltage:	14.2 A @ 230 V	Speed Code:	Single Speed
	7.10 A @ 460 V	Motor Standards:	NEMA
Design Code:	B	Starting Method:	Direct on line

Drip Cover:	No Drip Cover	Thermal Device - Bearing:	None
Duty Rating:	CONT	Thermal Device - Winding:	Normally Closed Thermostat
		XP Temp Code:	T3C

Nameplate 000613007AC		
CLASS I GROUP	D X X	NO. <input type="text"/>
CLASS II GROUP	F G X	
OPERATING TEMP CODE	T3C	

Nameplate 000613007LB									
CAT NO	CEBM7144T		SPEC NO.	P18G2137					
HP	5	AMPS	14.2/7.10		VOLTS	230/ 460		DESIGN	B
FRAME SIZE	L184TC	RPM	1765		HZ	60	AMB	40	
D.E. BRG.	30BC02J30X		PH	3		DUTY	CONT		
O.D.E. BRG.	25BC02J30X		TYPE	P		ENCL	TEFC		
			POWER FACTOR	73.7		NEMA-NOM-EFF	89.5		
			MAX CORR KVAR	02.5		GUARANTEED EFFICIENCY	87.5		
			NEMA NOM/CSA QUOTED EFF @			100% LOAD			
SER.NO.			MOTOR WEIGHT			LBS.			
	P18G2137A								

Nameplate 000692000FX

REL. S.O.	FRAME	HP	TYPE	PHASE/ HERTZ	RPM	VOLTS
	L184T	5	P	3/60	1765	230/460
AMPS	DUTY	AMB °C/ INSUL.	S.F.	NEMA DESIGN	CODE LETTER	ENCL.
14.2/7.1	CONT	40/F	1.15	B	J	TEFC
E/S	ROTOR	TEST S.O.	TEST DATE	STATOR RES. @25 °C OHMS (BETWEEN LINES)		
536441	418424-52YE	---	---	.556/2.22		

PERFORMANCE

LOAD	HP	AMPERES	RPM	POWER FACTOR %	EFFICIENCY %
NO LOAD	0	3.7	1800	6.71	0
1/4	1.25	4.2	1791	34.5	81.3
2/4	2.50	4.9	1783	54.5	87.9
3/4	3.75	5.9	1774	66.5	89.4
4/4	5.00	7.1	1764	73.7	89.4
5/4	6.25	8.4	1753	78.4	88.7

SPEED TORQUE

	RPM	TORQUE % FULL LOAD	TORQUE LB.-FT.	AMPERES
LOCKED ROTOR	0	285	42.5	46.0
PULL UP	250	245	36.4	45.0
BREAKDOWN	1538	330	49.1	27.9
FULL LOAD	1764	100	14.9	7.1

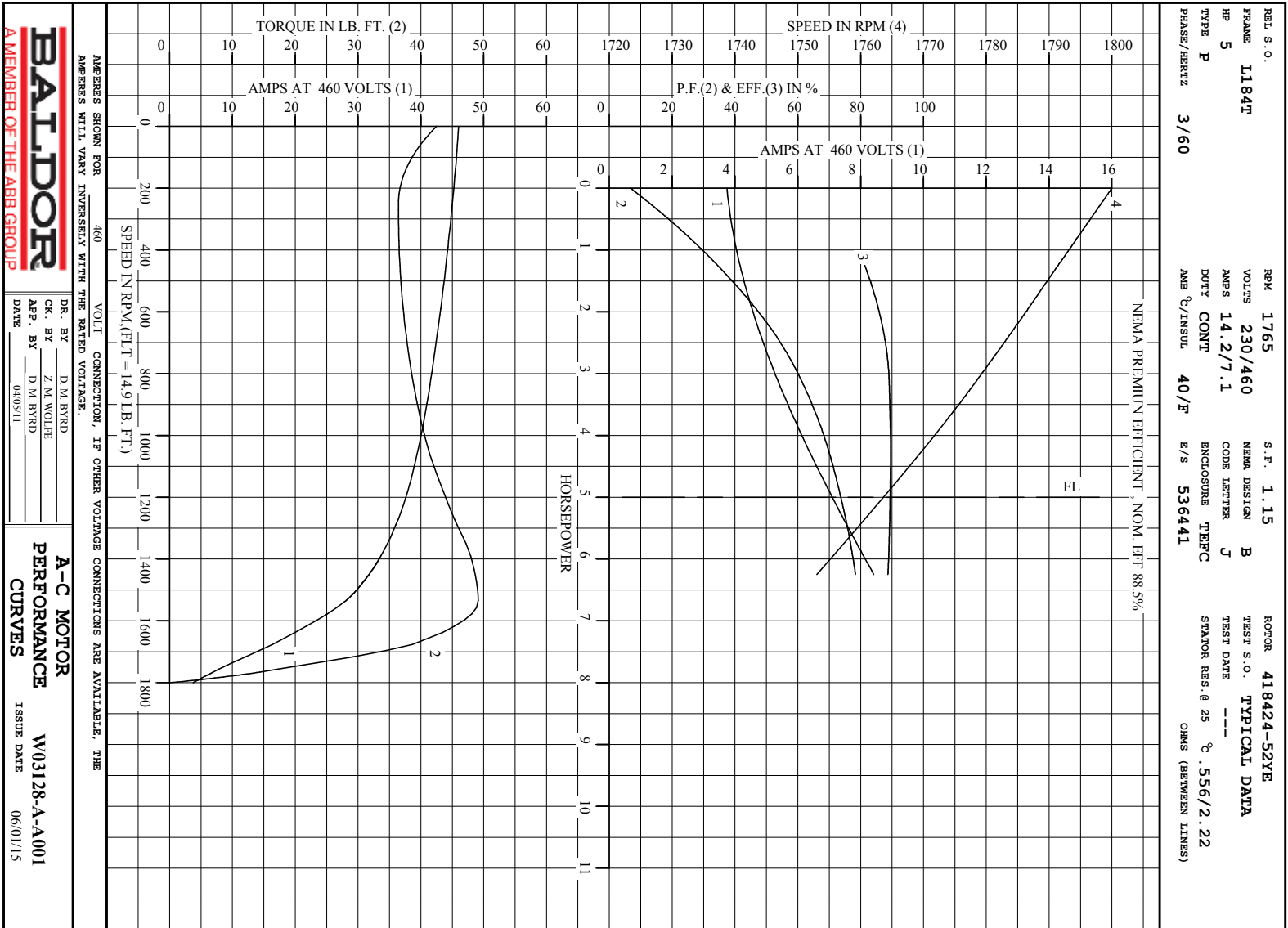
AMPERES SHOWN FOR 460. VOLT CONNECTION. IF OTHER VOLTAGE CONNECTIONS ARE AVAILABLE, THE AMPERES WILL VARY INVERSELY WITH THE RATED VOLTAGE

REMARKS: TYPICAL DATA
NEMA PREMIUM EFFICIENT , NOM. EFF 88.5%



DR. BY D. M. BYRD
 CK. BY Z. M. WOLFE
 APP. BY D. M. BYRD
 DATE 04/05/11

A-C MOTOR
 PERFORMANCE DATA
 W03128-A-A001
 ISSUE DATE 06/01/15



Printed on 4/25/16 14:10 @ bengap01.baldor.com

613053-542

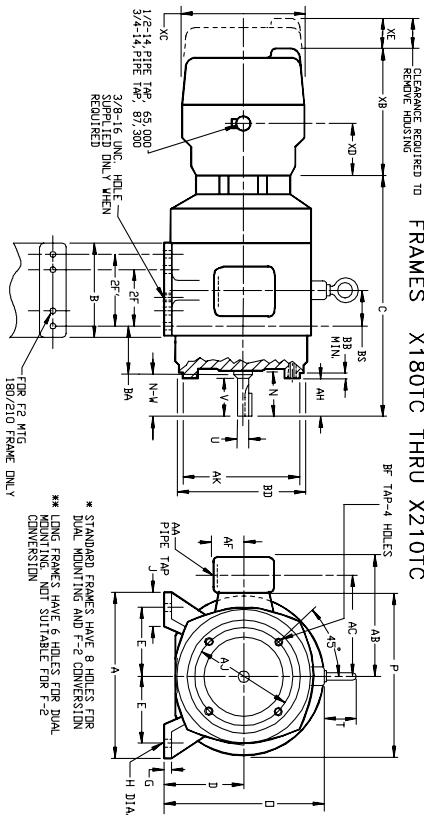
DUTY MASTER ALTERNATING CURRENT MOTORS
 SQUIRREL-CAGE INDUCTION
 CAST IRON CONSTRUCTION

ENCLOSURE: TOTALLY ENCLOSED
 UNDERWRITERS LISTED MOTOR

COOLING: FAN COOLED
 ACCESSORIES: INTEGRALLY MOUNTED STEARNS DISC BRAKE

MOUNTING: FOOT, NEMA "C" FACE

FRAMES X180TC THRU X210TC



FRAME	A	D(2)	E	G	H	J	O	P	T	XP TERMINAL BOX	MIN. I.P.
X180TC-X180TC	9.00	4.50	3.75	44	44	1.75	9.88	9.50	2.00	1	9.38
X210TC-X210TC	10.50	5.25	4.25	44	44	2.00	11.25	11.00	2.00	1	10.50

FRAME	FT	MG	C	ES	B	2R	AH	N	N-V	B	E	SHAFT AND KEY	WGT
X180TC	17.88	2.75	7.00	4.50	2.62	2.81	2.75	1.1250	2.50	.250	1.75	85	
X180TC	19.38	3.50	8.50	4.50	2.62	2.81	2.75	1.1250	2.50	.250	1.75	115	
X210TC	21.88	3.50	8.50	5.50	3.12	3.44	3.38	1.3750	3.12	.312	2.38	140	
X210TC	22.75	3.94	9.12	5.50	3.12	3.44	3.38	1.3750	3.12	.312	2.38	170	

EXPISSION PRQF#	BRAKE	WT.	XB	XC	XD	XE
3	1-065-321	38	7.86	7.88	1.81	3.62
6	1-065-331	40	7.86	7.88	2.12	3.62
10	1-065-351	42	7.86	7.88	2.44	3.62
15	1-065-361	42	7.86	7.88	2.44	3.62

EXPISSION PRQF#	BRAKE	WT.	XB	XC	XD	XE
10	1-087-311	62	9.34	10.88	2.97	4.50
15	1-087-321	63	9.34	10.88	2.97	4.50
20	1-087-331	63	9.34	10.88	2.97	4.50
25	1-087-341	63	9.34	10.88	2.97	4.50
30	1-087-351	64	9.34	10.88	2.97	4.50

TERMINAL BOX LOCATED ON OPPOSITE SIDE WHEN P-2, W-1, W-4, W-5, W-7 OR C-1 MOUNTING IS SPECIFIED.

MAXIMUM PERMISSIBLE SHAFT RUNOUT WHEN MEASURED AT END OF STANDARD SHAFT EXTENSION IS .002 T. I. R. IF MOUNTING CLEARANCE DETAILS ARE REQUIRED, CONSULT FACTORY.

FRAME _____ TYPE _____ CERTIFIED FOR _____

ORDER _____ ITEM _____ HP _____ RPM _____ APPROVED BY _____

RELIANCE SALES ORDER _____ DATE _____

113053-542

CUSTOMER IS RESPONSIBLE FOR DETERMINING THAT BALDOR'S PRODUCT WILL PERFORM SUITABLY IN THE INTENDED APPLICATION.

REV. DESC: CHANGED "XB" DIM ON 65000 SERIES BRAKE TABLE	TDR: 000000927053
REV. LTR: A	VERSION: 01
FILE: \RGG\00025\025	REVISED: 09:06:36 05/26/2015
MTL: 1	BY: RGTGRI

BALDOR
 D/S FCXP X180TC-L210TC W/FEET STEARNS BRAKE
 SH 1 of 1