

1 or 2 Lamp
T5, T5HO, or T8

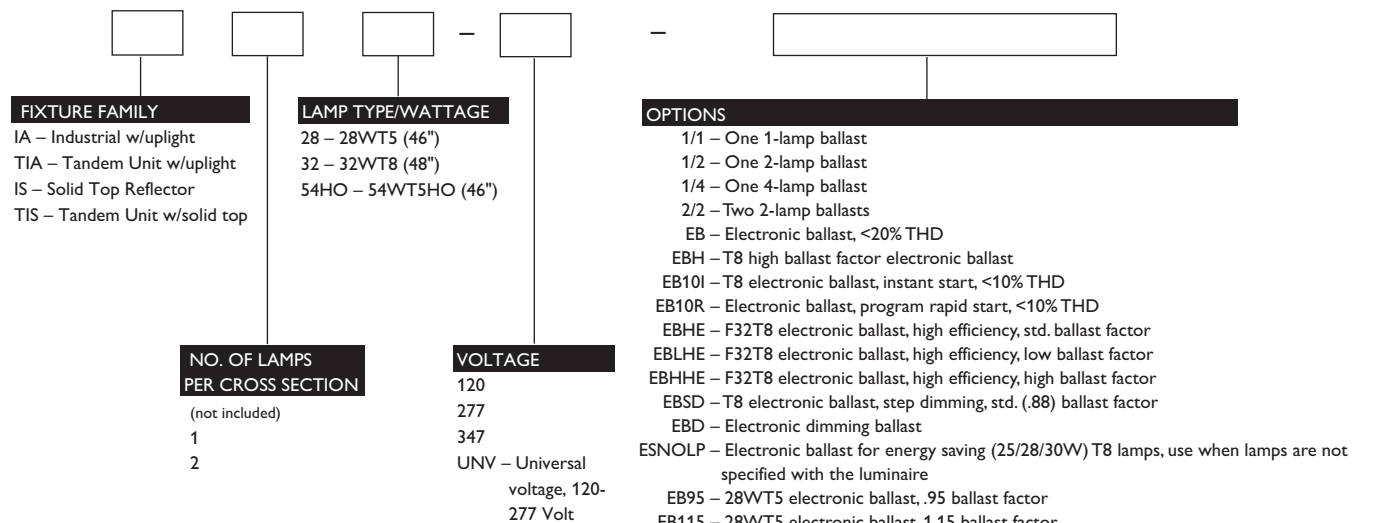
CONSTRUCTION/FINISH

- Reflectors feature reinforcing forms and are painted with high reflectance baked white enamel finish.
- Multiple knockouts for convenient installation.
- Heavy duty channel of code gauge die formed steel with baked white enamel finish.
- Reflectors are easily installed and have up-light construction standard. Solid top reflectors are available.
- Combination end cap/coupler requires no tools for installation.
- 1/4 turn reflector fastener requires no tools.
- Suitable for unit or row, direct or suspension mounting.

ELECTRICAL

- cULus listed for direct mounting on low density ceilings and damp locations.
- Self-contained fluorescent emergency power packs can be incorporated, listed for dry locations.

CATALOG NUMBER



ACCESSORIES

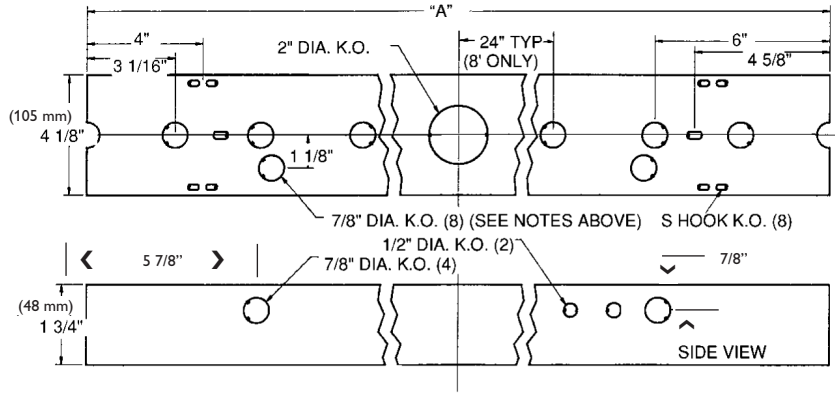
- 5988W/5977W – Hydee hangers (4' models)
- CS-400 – Rigid stem canopy
- CS-500 – Swivel stem canopy
- CS Series Stems
- CTBH-1 – T-bar sliding hanger, flush mount
- CTBH-2 – T-bar sliding hanger, 1-1/2" spacing except T12HO/VHO
- CTBH-3 – T-bar sliding hanger, 1-1/2" spacing for T12HO/VHO
- FKR-126 – Chain hanger set
- N-3380/3381 – Universal joint aligner, octagonal box, 1/2" / 3/4" I.P.S.
- N-3385 – Universal joint aligner, square box, 1/2" I.P.S.
- TH-1 – Sliding hanger, flush mounting
- TH-2 – Sliding hanger, 1-1/2" spacing except T12HO/VHO
- TH-4 – Sliding hanger, 1-1/2" spacing for T12HO/VHO
- TC-1 – Heavy duty coupler

See section 1600-OA for option information and sheet 1455-IF for mounting hardware.

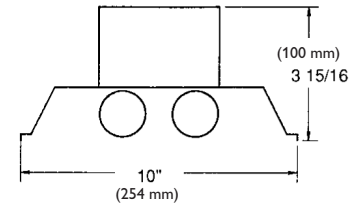
JOB INFORMATION



DIMENSIONS



DIM "A"	
4' CHANNEL (1219 mm)	48"
8' CHANNEL (2438 mm)	96"



PHOTOMETRIC DATA

CATALOG # IA232-1/2-EB
TEST # 42321 S/MH=1.5

LAMPS = F32 T8
BALLAST = ELECTRONIC BALLAST FACTOR = .92

INPUT WATTS = 61

LER = FI-76

TER = 46

FIXTURE EFFICIENCY= 86.6%

COMPARATIVE YEARLY LIGHTING ENERGY COST PER 1000 LUMENS = \$3.16 BASED ON 3000 HRS. AND \$.08 PER KWH.

CANDLEPOWER				
Angle	End	45	Cross	
0	1310	1310	1310	
5	1312	1307	1306	
15	1263	1288	1314	
25	1169	1249	1317	
35	1039	1186	1295	
45	869	1097	1249	
55	671	982	1135	
65	448	804	933	
75	224	526	495	
85	37	80	40	
95	0	12	4	
105	0	42	46	
115	0	75	79	
125	0	59	108	
135	0	10	76	
145	0	1	12	
155	0	1	2	
165	0	0	1	
175	0	0	0	

MAINTAINED ILLUMINATION TABLE- Square Feet/ Fixture*						
■ 80-50-20 Reflectances (Ceiling-Wall-Floor) ■ LLF = 0.76 2900 Lumens/Lamp (very clean) ■ Room width divided by room height = 5 or more, 2 or 1						
Fixture Size & # of Lamps	Room Width Room Height =	Approx. Area (sq. ft.) per Fixture				
		10 ft-c	30 ft-c	50 ft-c	70 ft-c	100 ft-c
4'	5	-	129	78	55	39
2-Lamp	2	-	84	51	36	-
	1	-	60	36	-	-

*Observe Fixture S/MH Requirements for Specific Applications

AVERAGE LUMINANCE CD/SQ.M WITH 2900 LUMEN LAMPS				
ANGLE	END	45°	CROSS	
45	3870	4886	5562	
55	3684	5392	6232	
65	3338	5991	6952	
75	2725	6400	6023	
85	1337	2891	1445	

TYPICAL V.C.P.'s				
Room Size	Mounting Height			
	8.5	10	8.5	10
30x30	32	37	28	30
40x40	30	33	28	29
60x30	35	38	32	34
60x60	30	31	30	29
100x100	34	32	36	36

COEFFICIENT OF UTILIZATION										
pfc	20									
pcc	80	70				50				
pw	70	50	30	70	50	30	50	30		
RCR	0	102	102	102	100	100	100	94	94	
	1	92	88	83	90	85	81	81	78	
	2	82	75	68	81	72	68	69	65	
	3	75	65	57	72	64	56	60	55	
	4	68	56	48	66	56	47	53	46	
	5	63	51	41	59	50	41	46	40	
	6	57	45	36	56	44	36	41	35	
	7	53	40	33	51	40	32	38	32	
	8	48	36	28	47	35	28	34	28	
	9	46	34	26	45	33	26	32	26	
	10	42	30	23	41	30	23	28	23	

LIGHT DISTRIBUTION			
DEGREES	LUMENS	% LAMP	% FIXTURE
0-30	1065	18.4	21.2
0-40	1804	31.1	35.9
0-60	3493	60.2	69.5
0-90	4848	83.6	96.5
90-180	176	3.0	3.5
0-180	5024	86.6	100.0

LLF = .76 LLF = LIGHT LOSS FACTOR LLF = LDD X LLD X BF LDD = VERY CLEAN 0.94
LLD = 0.88 @ 40% RATED LAMP LIFE BF = 0.92 ELECTRONIC BALLAST & T8 LAMP (RELAMP AT 70% LAMP LIFE)



Some luminaires use fluorescent or high intensity discharge (HID) lamps that contain small amounts of mercury. Such lamps are labeled, "Contain Mercury" and/or the symbol "HG". Lamps that contain mercury must be disposed of in accordance with local requirements. Information regarding lamp recycling and disposal can be found at www.lamprecycle.org



© 2014 Koninklijke Philips N.V. All rights reserved.
Specifications are subject to change without notice.
www.philips.com/luminaires

Philips Lighting
North America Corporation
200 Franklin Square Drive
Somerset, NJ 08873
Phone: 855-486-2216

Philips Lighting Company
281 Hillmount Road
Markham ON, Canada L6C 2S3
Phone: 800-668-9008