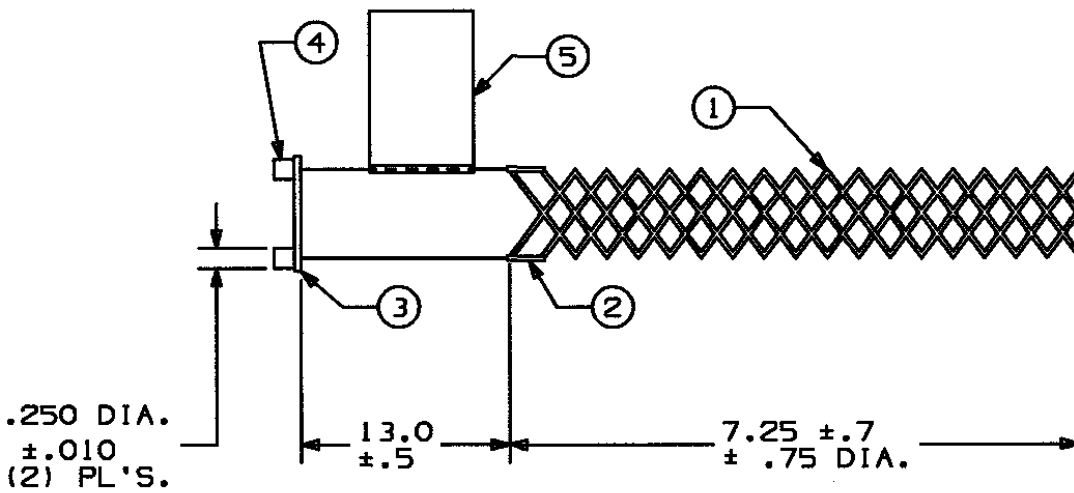


### COMPONENT LIST

ITEM NO.	DESCRIPTION	MAT'L	COMPONENT NO.	QTY.
1	STRAND	T-BRZ	302-01-003	
2	EQUALIZER	BRZ	362-47-002	2
3	LINK	BRZ	372-55-001	1
4	LUG	BRZ	372-56-007	2
5	TAG	MYLAR	309-77-0215	1



IN ACCEPTING OUR DRAWINGS OR BLUEPRINTS FOR QUOTATION OR OTHER PURPOSES, YOU AGREE NOT TO DISCLOSE TO OTHERS THE IDEAS, INFORMATION, OR DESIGNS THEREIN SHOWN, AND THAT YOU WILL MAKE NO USE OF OUR DRAWINGS OR BLUEPRINTS OR OF THE IDEAS, INFORMATION, OR DESIGNS THEREIN SHOWN WITHOUT OUR PERMISSION.

**TITLE:**

GRIP-STANDARD SERVICE DROP  
 CLOSED MESH - SINGLE WEAVE  
 UNIVERSAL BALE  
 DIA. RA. .70-.81  
 DESCRIPTION: SU-12  
 APP. BRK. STR. (LBS.) = 790

TOLERANCES UNLESS OTHERWISE SPECIFIED

.XX = ±.05  
 .XXX = ±.015  
 .XXXX = ±.0025  
 ANGLE TOL. ± 2°

**HUBBELL INCORPORATED**  
 KELLEMS DIVISION  
 STONINGTON, CT

DR. BY: KJW	APP. BY: MLF
TR. BY	SCALE NONE
CHK. BY	DATE: 3/01/93

DR. NO.

022-16-024

REV.

G