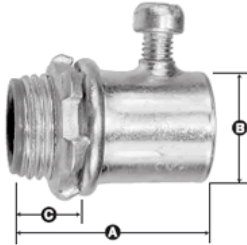
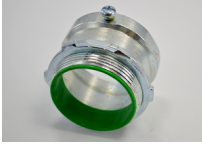


Connectors - US Steel

Images



Application

Used to secure steel EMT to box or enclosure.
Concrete tight when taped. Rated 105°C

Product Information

Material: Steel
Finish: Zinc Electro-Plated

Certifications & Codes:

Federal Specification Number:	W-F-408E
NEMA Standard:	FB-1
UL File Number:	E24001
UL Standard:	UL514B
UNSPSC:	39121434

[Download Photo Image](#) [Download Dimensional Image](#)
Dimension A in Inches: 2.000
Dimension B in Inches: 2.750
Dimension C in Inches: 0.625

Catalog ID: 235-USI

UPC Number: 78174724235

Description: Connector, Set Screw, Made in the USA Steel, Insulated Throat, Size 2 Inch. Rated 105 Degree C

Application: Used to secure steel EMT to box or enclosure. Concrete tight when taped. Rated 105°C

Trade Size: 2"

Country of Manufacture: USA

Std Pkg Qty: 30

Unit Qty: 5