

BALDOR® • RELIANCE

Product Information Packet

GMP3330

.33HP, 1725RPM, 3PH, 60HZ, PSLH, 3320M, TEFC,

Part Detail							
Revision:	F	Status:	PRD/A	Change #:		Proprietary:	No
Type:	AC	Elec. Spec:	33WG0675	CD Diagram:	CD0005A05	Mfg Plant:	
Mech. Spec:		Layout:	33E887-0675G1	Poles:	04	Created Date:	11-04-2015
Base:		Eff. Date:	11-16-2016	Leads:	9#18		

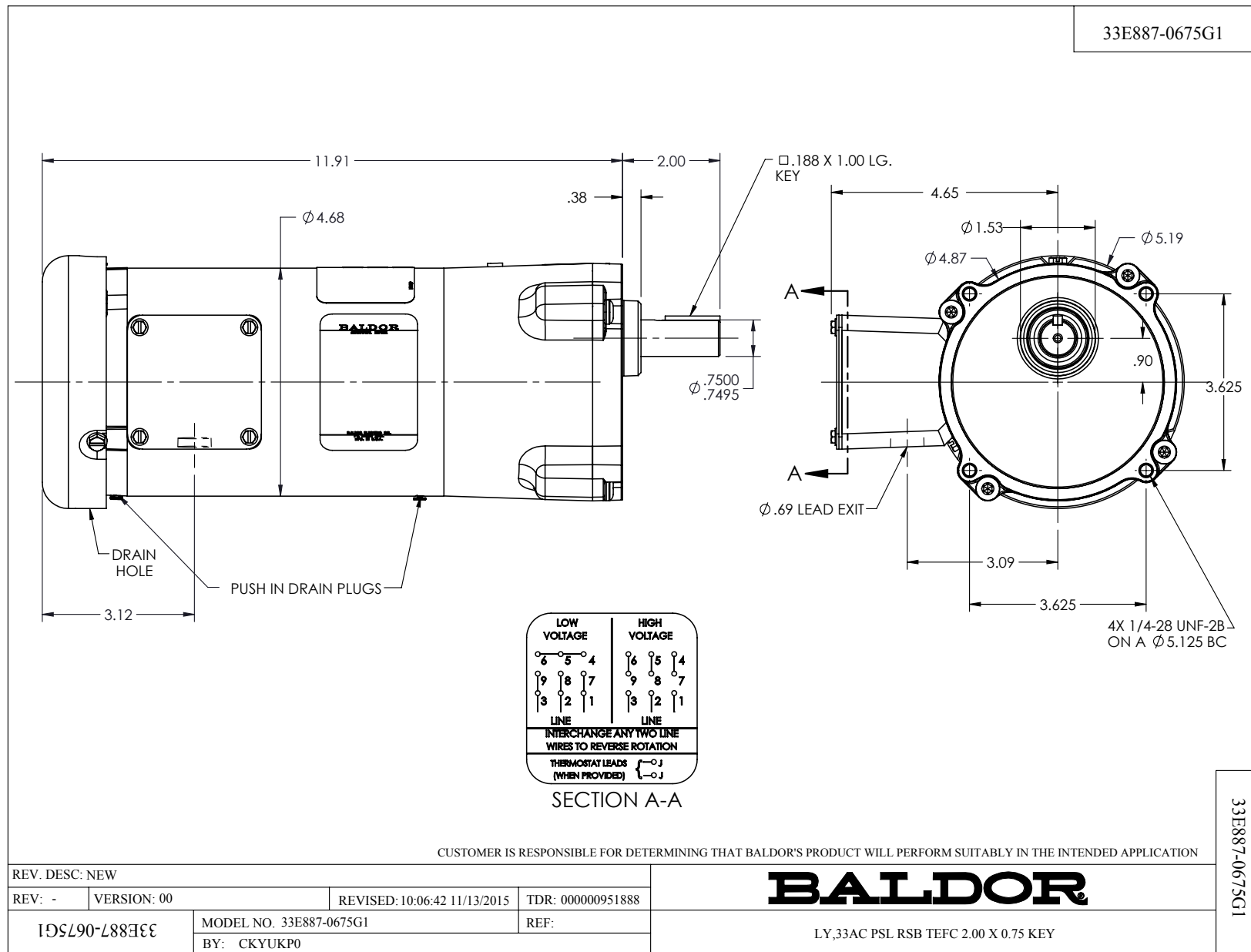
Specs			
Catalog Number:	GMP3330		
Enclosure:	TEFC		
Frame Material:	Steel		
Output @ Frequency:	.330 HP @ 60 HZ		
Synchronous Speed @ Frequency:	1800 RPM @ 60 HZ		
Voltage @ Frequency:	460.0 V @ 60 HZ		
	230.0 V @ 60 HZ		
	208.0 V @ 60 HZ		
Agency Approvals:	CSA		
	UR		
Current @ Voltage:	.700 A @ 460.0 V		
	1.400 A @ 230.0 V		
	1.500 A @ 208.0 V		
Design Code:	B		
Duty Rating:	CONT		
Feedback Signal:	NONE		
Heater Indicator:	No Heater		
Insulation Class:	B		

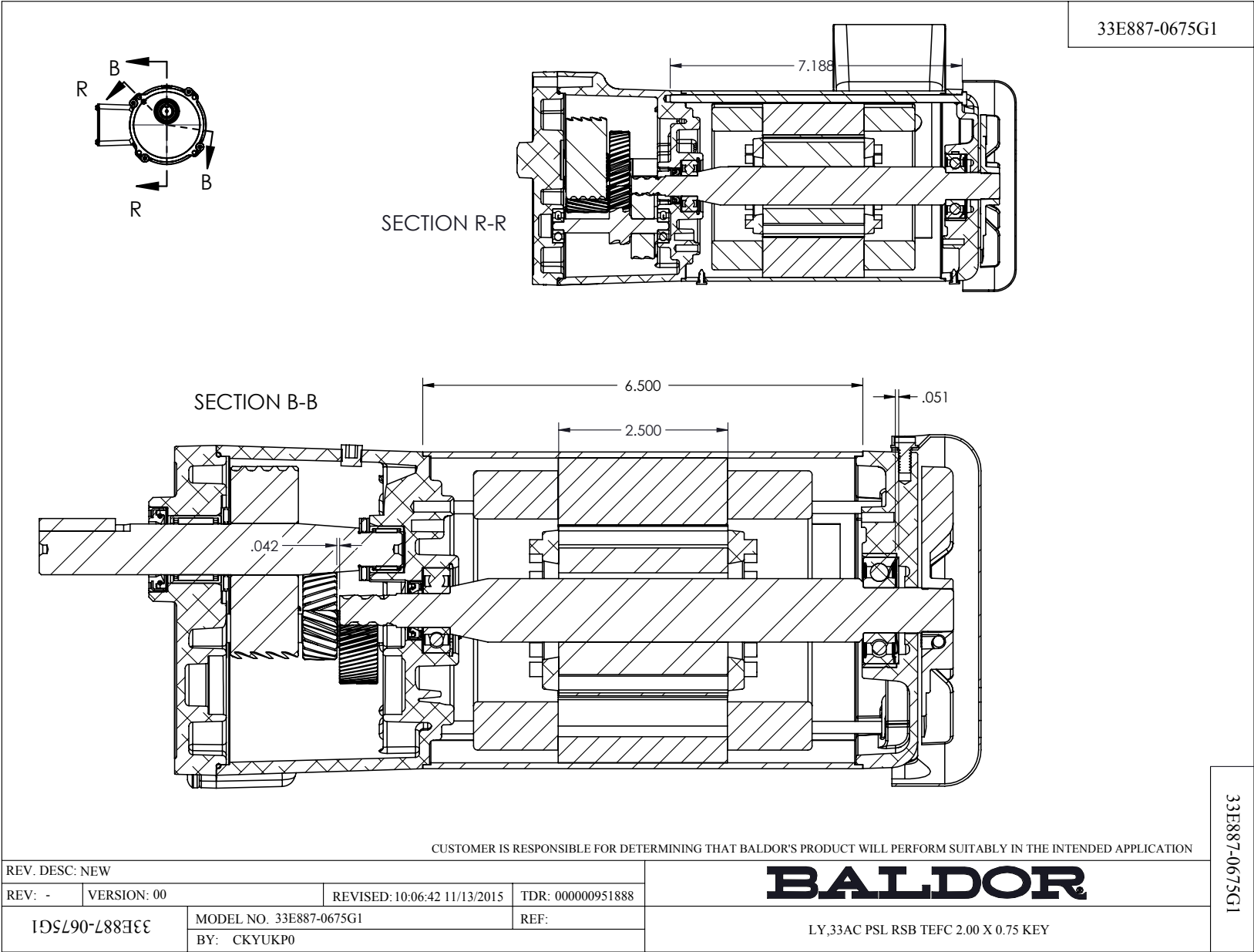
Inverter Code:	Not Inverter		
KVA Code:	-		
Motor Lead Quantity/Wire Size:	9 @ 18 AWG		
Motor Type:	3320M		
Power Factor:	58		
Product Family:	General Purpose		
RoHS Status:	ROHS COMPLIANT		
Shaft Rotation:	Reversible		
Motor Standards:	NEMA		
Starting Method:	Full Voltage		
Thermal Device - Winding:	None		
Winding Thermal 1:	None		
Winding Thermal 2:	None		

Nameplate NP1220A07

CAT.NO.	GMP3330		
SER.NO			
SPEC.	33E887-0675G1		
HP	.33	TE	
VOLTS	208-230/460		
AMP	1.5-1.4/.7		
HZ	60	PH	3
AMB.	40	DUTY	CONT
CAP		CODE	-
SER.F.	1.00	CLASS	B
R.P.M.	58		
TORQ/IN LB	320		
RATIO	30:1		
APRV-CSA		APRV-UL	

No performance data has been
assigned to this product.





ITEM NO.	PART NUMBER	QTY.
1	HG0076A16	1
2	BMH1714	2
3	BH1165A02	1
4	HW5002A95	1
5	HW4600D35	1
6	BH1163A02	1
7	HA4021A05	1
8	HW3064E05	1
9	33SH7271B01	1
10	33RC4120-00	1
11	BG6203C03	1
12	33SA9200B96	1
13	NS2512A01	1
14	34GS1029A01	1
15	34CB3002C	1
16	51XB1016A07	2
17	11XT1032G06	1
18	34CB4517	1
19	34GS1031A01	1
20	51XT0832A07	4
21	33EP3100A01	1
22	HW5109A05	1
23	HA3100A	2
24	33FN3000	1
25	12XN0832A16	1
26	HW1003A08	1
27	XY0832A02	1
28	33FH4000A01	1
29	51XB1016A06	3
30	SG0045C11	1
31	SG0045C12	1
32	SG0045C13	1
33	CG0012A01	1
34	RM1020A22	1
35	BH1163A03	1
36	HW4600D39	1
37	60XM2520A12	4
38	LC0005	1
39	LB1119	1
40	BMH1910	1
41	HA4067	2
42	NP1220A 33AC RSB	1

CUSTOMER IS RESPONSIBLE FOR DETERMINING THAT BALDOR'S PRODUCT WILL PERFORM SUITABLY IN THE INTENDED APPLICATION

REV. DESC: NEW

REV: - VERSION: 00 REVISED: 10:06:42 11/13/2015 TDR: 000000951888

1G5L90675G1

MODEL NO. 33E887-0675G1

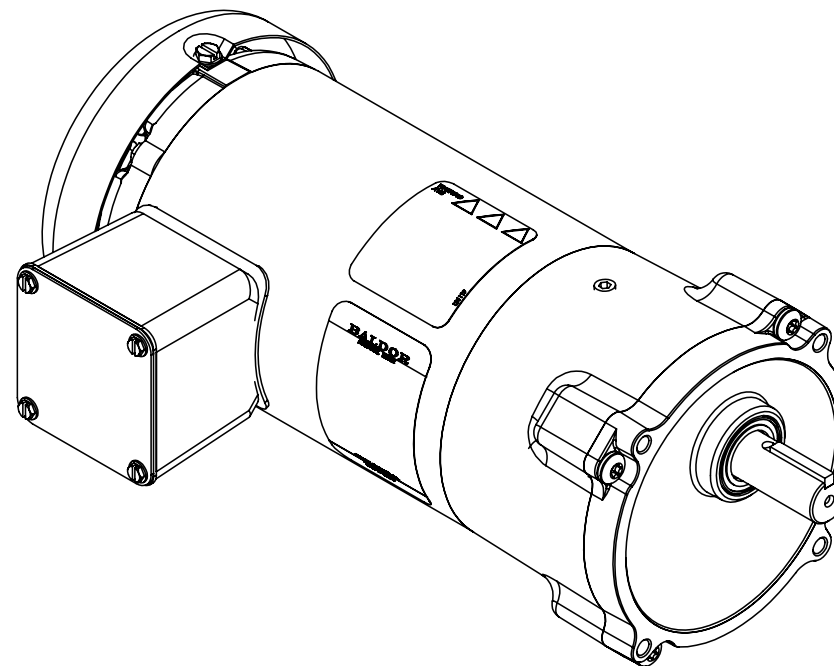
BY: CKYUKP0

REF:

BALDOR

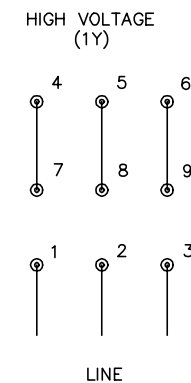
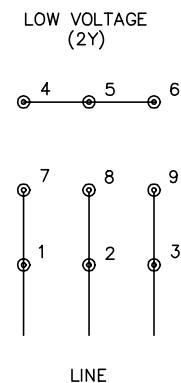
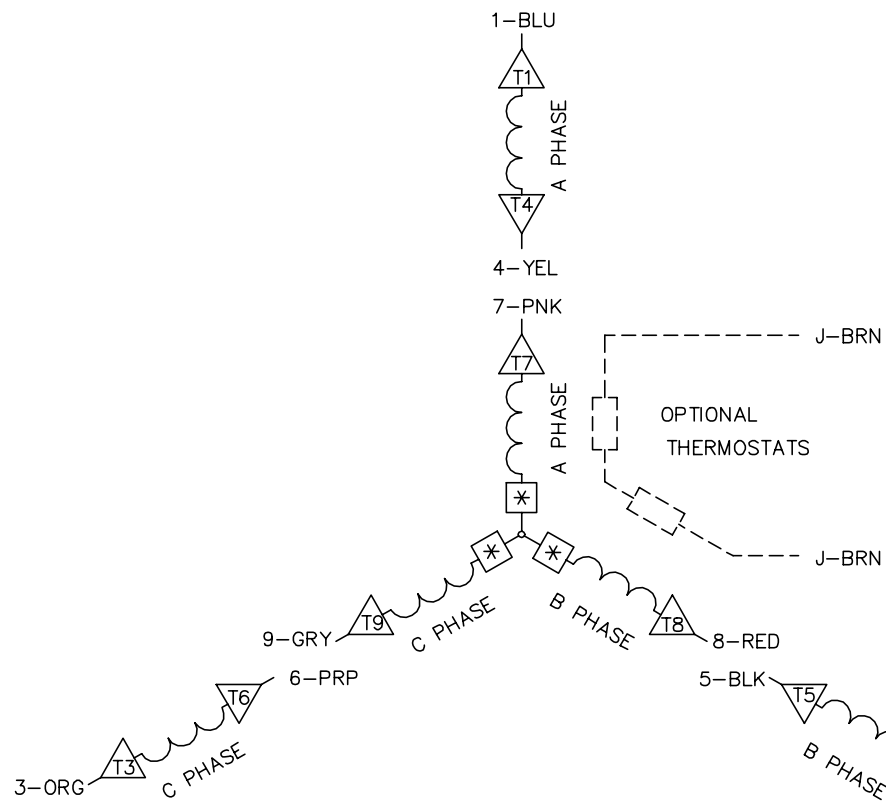
LY,33AC PSL RSB TEFC 2.00 X 0.75 KEY

33E887-0675G1



33E887-0675G1

CD0005A05



NOTES:

1. INTERCHANGE ANY TWO LINE LEADS TO REVERSE ROTATION.
2. OPTIONAL THERMOSTATS ARE PROVIDED WHEN SPECIFIED.
3. ACTUAL NUMBER OF INTERNAL PARALLEL CIRCUITS MAY BE A MULTIPLE OF THOSE SHOWN ABOVE.
4. LEAD COLORS ARE OPTIONAL. LEADS MUST ALWAYS BE NUMBERED AS SHOWN.
5. =MAGNET WIRE COIL END WITH I.D. NUMBER.
6. =MAGNET WIRE COIL END WITH I.D. SYMBOL.
7. SEE CW PRINT FOR NEST TO NEST CROSSOVER CONNECTIONS.

REV. DESC: ADD NEST NOTE

REV. LTR: C

VERSION: 03

TDR: 000000445597

CD0005A05

FILE: \CKA\00024\847

REVISED: 12:51:06 11/15/2007

MTL: -

BY: CKMICRO

BALDOR • DODGE • RELIANCE

3PH, DV, 9 LEADS, CK

CD0005A05